

WOOD GUARD RAIL REQUIRED

CULVERT STATION	LEFT	RIGHT
207+03	24'	24'
202+16	24'	24'

CABLE GUARD RAIL REQUIRED

STATIONS	L+R	LINE	QUANTITY	PIV LENGTH
202+00-202+05	44'	24'	60'	64'
202+04-202+05	44'	24'	60'	64'

STD UNDERDRAIN WITH 6" PERF CORR GALV METAL PIPE REQUIRED

STATIONS	L+R	LENGTH	CEMENT MASONRY
198+00-202+00	ETC	400'	-
198+12-198+12	ETC	20'	-

CULVERT REPAIRS REQUIRED

STATION (NATURE OF REPAIR) COST

202+16 Patching O.I. barrel 80 CY 769 \$

207+03 Patching outlet 35 CY 103 \$

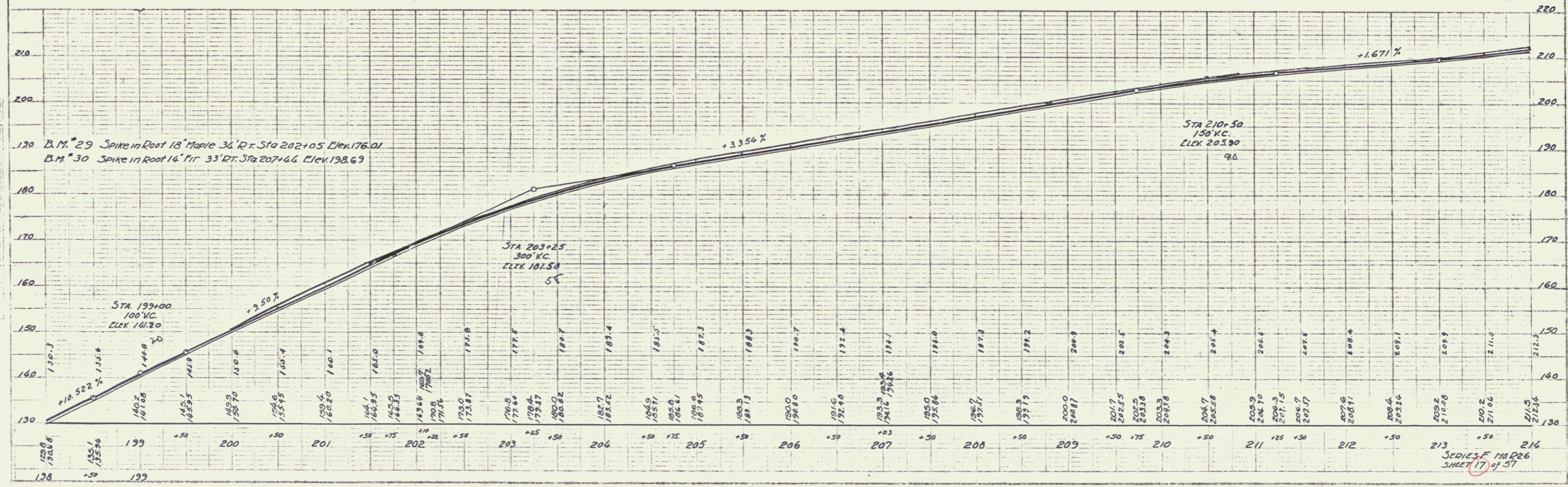
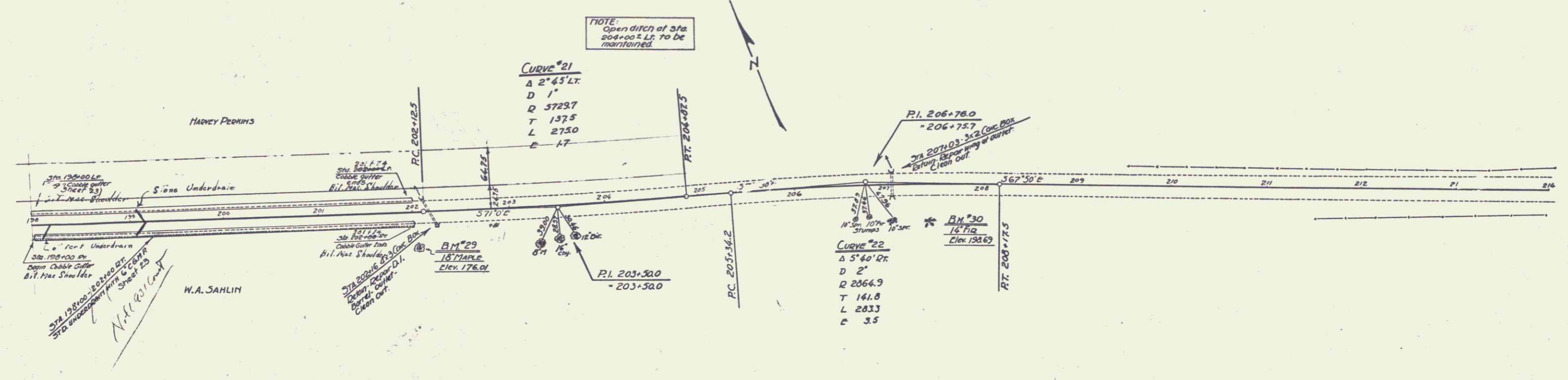
GRADED COBBLE GUTTER REQUIRED

STATION	L+R	LENGTH	WIDTH	AREA
198+00-202+00	LT	400	3'-4"	776
198+00-202+00	RT	400	3'-4"	776
200+00-201+00	LT	100	3'-4"	194
200+00-201+00	RT	100	3'-4"	194
201+00-201+74	LT	74	2'-6"	152
201+00-201+74	RT	74	2'-6"	152

BITUMINOUS MACADAM GUTTER REQUIRED

Stations	L+R	Length	Surface Stone
198+00-201+74	LT RT	374	14 CY
198+00-201+74	RT LT	374	14 CY

FED. ROAD DIST. NO. 8 STATE ILL. PROJ. NO. 226 YEAR 1953 SHEET NO. 77 TOTAL SHEETS 99



SERIES F 110-226 SHEET 17 OF 57