

SCALE 83' = 1"

WIRE CABLE GUARD RAIL W/ STEEL POSTS  
140+74 Lt - 143+62 Lt  
141+12 Rt - 142+60 Rt

EXCAVATION & REMOVAL  
OF EXISTING CEMENT  
CONCRETE PAVEMENT  
140+00 - 154+00

FRANK W. LATHROP

SEEDING, TOPSOIL, AND  
COMMERCIAL FERTILIZER  
145+61 Rt - 146+59 Rt  
146+72 Rt - 147+44 Rt  
147+56 Rt - 150+66 Rt  
150+78 Rt - 152+00 Rt  
153+26 Rt - 154+24 Rt  
152+60 rt Island  
149+05.5 Lt - 149+50 Lt  
150+39 Lt - 151+09 Lt

REMOVAL & DISPOSAL OF PRESENT GUARD RAIL  
141+45 Rt - 142+00 Rt  
141+47 Rt - 142+07 Rt

CONSTRUCT APPROACH  
141+00 Rt  
153+00 Rt  
152+15 Rt

CONSTRUCT DRIVES  
148+15 Rt  
148+90 Lt  
150+72 Rt  
154+30 Rt  
146+66 Rt

BIT CONC. CURB, ITEM 535  
TYPE II  
151+72 rt - 152+03 rt  
152+60 rt Island  
153+20 rt - 153+50 rt

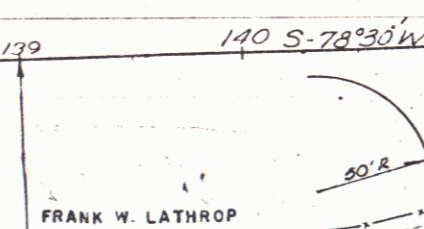
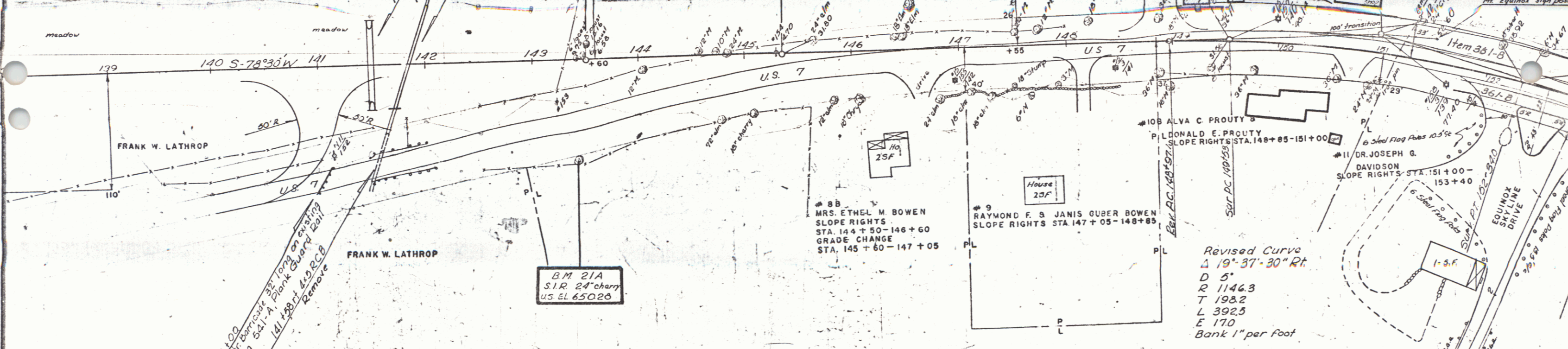
Survey  
PI 150+95.9 - Δ 19° 37' 30" Rt  
150+92.3 D 7°  
Rev. P.I. 150+95.3  
150+91.4

BM 22A  
S.I.T. 24" chary  
U.S. EL 653.00

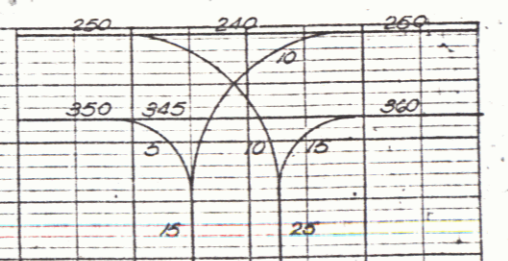
8A  
MRS. ETHEL M. BOWEN  
(A 0.90±) STA. 143+30 - 147+55  
CULVERT RIGHTS STA. 144+50

10A ALVA C. PROUTY & DONALD F. PROUTY  
SLOPE RIGHTS STA. 147+50 - 149+10

DR. JOSEPH G. DAVIDSON



BM 21A  
S.I.T. 24" chary  
U.S. EL 650.00



SUNDERLAND MANUFACTURE  
FO19-1(3) SA. 14 OF 90