

INDEX OF SHEETS

STATE OF VERMONT
DEPARTMENT OF HIGHWAYS

PROPOSED IMPROVEMENT

FEDERAL PROJECT

TOWN OF POWNAL

COUNTY OF BENNINGTON

VERMONT ROUTE 346

POWNAL, VT. HOOSICK, N.Y. ROAD

Pin# 99R 691

BEGINNING AT A POINT FEET SOUTHEAST OF
THE VERMONT-NEW YORK STATE LINE AND EXTENDING
WESTERLY FEET.

LENGTH OF ROADWAY FEET = MI.
LENGTH OF BRIDGE FEET = MI.
LENGTH OF PROJECT FEET = MI.

MP 3.587

MP 3.833

1/1/50

RIGHT-OF-WAY DIVISION
TOWN FILE
PERPETUAL
Town of H 346
[To Be Returned To R.O.W. Division]

CONVENTIONAL SIGNS

COUNTY LINE	---
TOWN LINE	----
FENCE LINE	-----
STONE WALL	-----
UNFENCED PROPERTY	-----
GUARD RAIL	-----
TRAVELED WAY	-----
RAILROAD	-----
RETAINING WALL	-----
CENTER LINE	-----
SURVEY LINE	-----
CULVERT	-----
DROP INLET	-----
TROLLEY POLE	-----
POWER POLE	-----
TELEPHONE POLE	-----
TREES	-----
HEDGE	-----
R.O.W. LIMITS	-----

GROUND ELEVATION	DATUM	LINE
GRADE ELEVATION	DATUM	LINE
CURVE DATA		
DEFLECTION OF ANGLE	A	
DEGREE OF CURVE	D	
RADIUS OF CURVE	R	
TANGENT DISTANCE	T	
LENGTH OF CURVE	L	
EXTERNAL DISTANCE	E	
POINT OF INTERSECTION	P.I.	
POINT OF CURVE	P.C.	
POINT OF TANGENT	P.T.	
POINT ON TANGENT	P.O.T.	
POINT ON SUB-TANGENT	P.O.S.T.	

SCALES

TITLE	1" = 100'
TYPICAL	1" = 2'
PLAN	1" = 50'
PROFILE HORIZONTAL	1" = 50'
PROFILE VERTICAL	1" = 10'
GROSS-SECTIONS	1" = 5'

THESE PLANS ARE SUBJECT TO SUCH REVISIONS AS MAY BE
REQUIRED BY THE BUREAU OF PUBLIC ROADS OR THE COMMISSIONER
OF HIGHWAYS.
CONSTRUCTION IS TO BE CARRIED ON IN ACCORDANCE WITH
THE PLANS AND THE STANDARD SPECIFICATIONS FOR HIGHWAY AND BRIDGE
CONSTRUCTION OF JANUARY 1956 SUBMITTED TO THE BUREAU OF
PUBLIC ROADS AS APPROVED JULY 5, 1956, INCLUDING ALL SUBSEQUENT
APPROVED REVISIONS AND SUCH REVISED SPECIFICATIONS AND SPECIAL
PROVISIONS AS ARE SUBMITTED WITH THE PLANS.

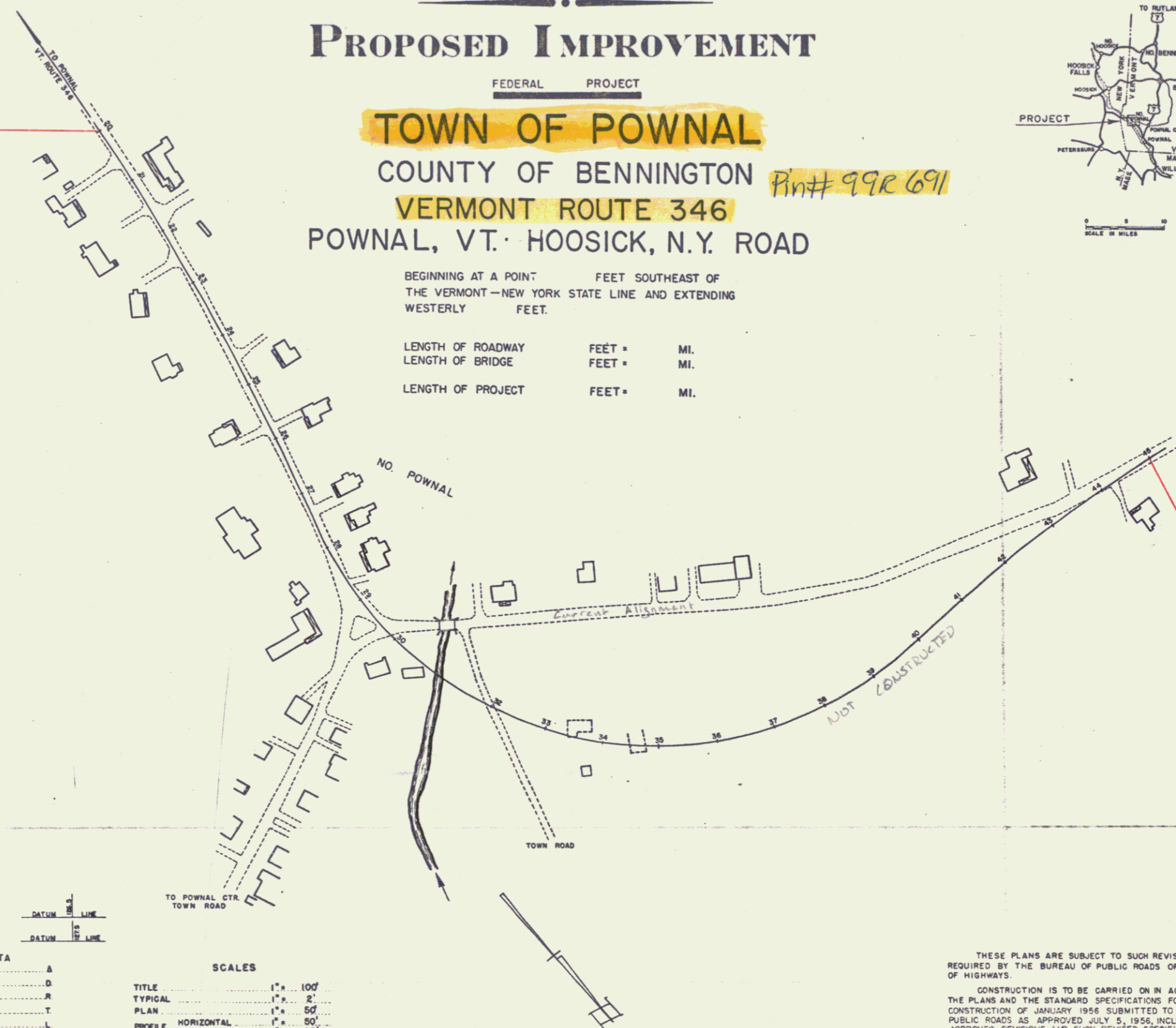
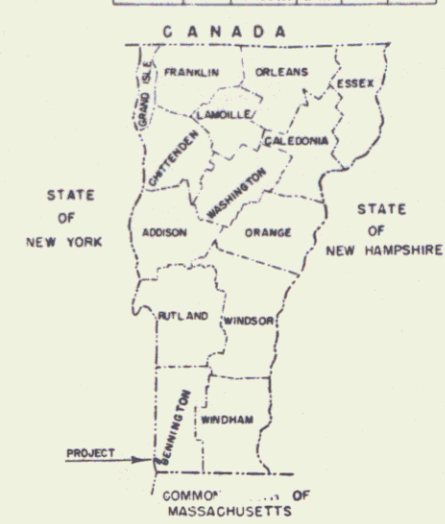
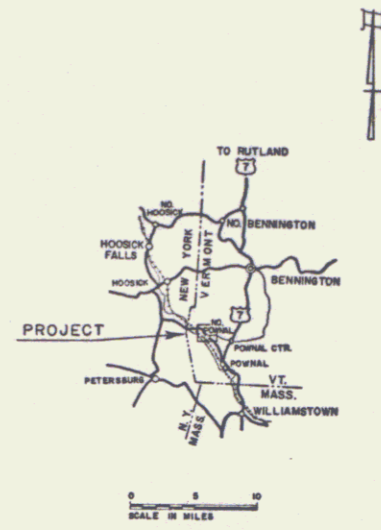
DEPARTMENT OF COMMERCE
BUREAU OF PUBLIC ROADS

APPROVED	APPROVED	APPROVED	APPROVED	APPROVED	APPROVED
SECONDARY ENGINEER	CONSTRUCTION ENGINEER	BRIDGE ENGINEER	DISTRICT ENGINEER	HIGHWAY ENGINEER	CHIEF ENGINEER
DATE	DATE	DATE	DATE	DATE	DATE

APPROVED
DIVISION ENGINEER DATE

PROJECT F NO. 136 (5)
SHEET 1 OF SHEETS

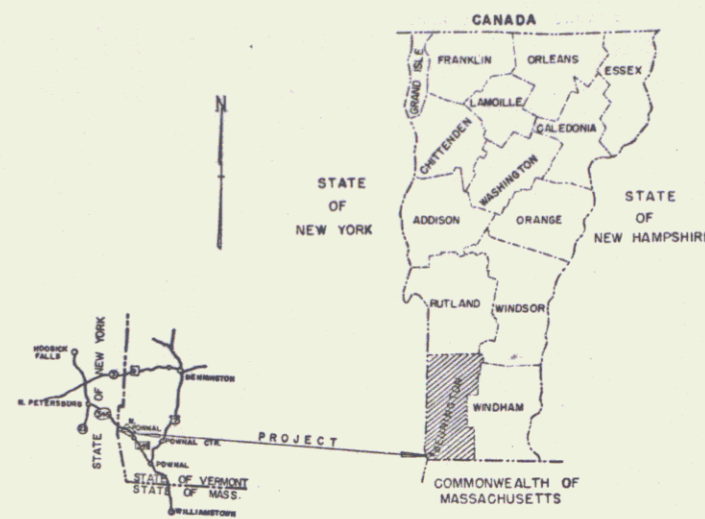
FED. ROAD DISTRICT NO.	STATE	PROJECT NO.	FISCAL YEAR	SHEET NO.	TOTAL SHEETS
1	VT.	F136(5)	1957	1	1



INDEX OF SHEETS

STATE OF VERMONT
 DEPARTMENT OF HIGHWAYS
PROPOSED IMPROVEMENT
 FEDERAL PROJECT
 TOWN OF POWNAL
 COUNTY OF BENNINGTON
 VT. ROUTE 346
 POWNAL, VT., - NO. PETERSBURG, N.Y. ROAD

FED. ROAD DIVISION NO.	STATE	PROJECT NO.	SHEET NO.	TOTAL SHEETS
1	VT.	WAR		



Drawn # 14



DESIGN DESIGNATION

ADT	1000
POST	1975
SP	25
ST	1.50

CONVENTIONAL SIGNS

COUNTY LINE	---
TOWN LINE	---
FENCE LINE	---
STONE WALL	---
UNFENCED PROPERTY	---
GUARD RAIL	---
TRAVELED WAY	---
RAILROAD	---
RETAINING WALL	---
CENTER LINE	---
SURVEY LINE	---
CULVERT	---
DROP INLET	---
TROLLEY POLE	---
POWER POLE	---
TELEPHONE POLE	---
TREES	---
HEDGE	---

CURVE DATA

DEFLECTION OF ANGLE	Δ
DEGREE OF CURVE	D
RADIUS OF CURVE	R
TANGENT DISTANCE	T
LENGTH OF CURVE	L
EXTERNAL DISTANCE	E
POINT OF INTERSECTION	P.I.
POINT OF CURVE	P.C.
POINT OF TANGENT	P.T.
POINT ON TANGENT	P.O.T.
POINT ON SUB-TANGENT	POST

SCALES

TITLE	1" = 200'
TYPICAL	1" = 200'
PLAN	1" = 200'
PROFILE HORIZONTAL	1" = 200'
PROFILE VERTICAL	1" = 200'
CROSS-SECTIONS	1" = 200'

THESE PLANS ARE SUBJECT TO SUCH REVISIONS AS MAY BE REQUIRED BY THE BUREAU OF PUBLIC ROADS OR THE COMMISSIONER OF HIGHWAYS.

CONSTRUCTION IS TO BE CARRIED ON IN ACCORDANCE WITH THE PLANS AND THE STANDARD SPECIFICATIONS FOR HIGHWAY AND BRIDGE CONSTRUCTION OF JANUARY, 1956, AS APPROVED BY THE BUREAU OF PUBLIC ROADS, JULY 5, 1956, INCLUDING ALL SUBSEQUENT APPROVED REVISIONS AND SUCH REVISED SPECIFICATIONS AND SPECIAL PROVISIONS AS ARE SUBMITTED WITH THE PLANS.

DEPARTMENT OF COMMERCE
BUREAU OF PUBLIC ROADS

APPROVED _____ DATE _____

DIVISION ENGINEER

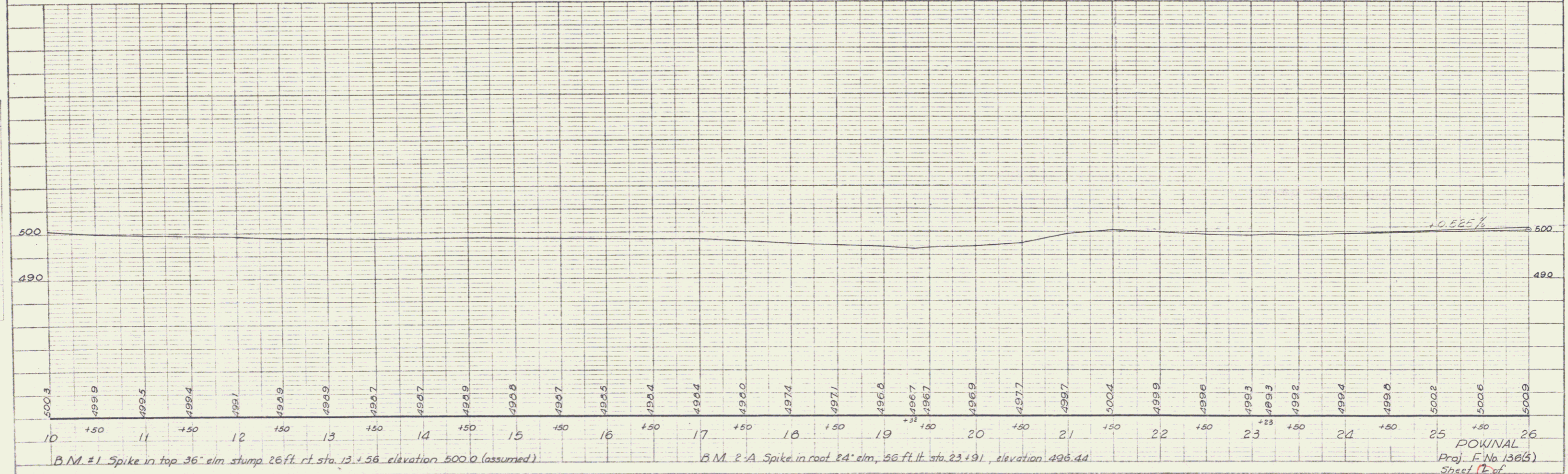
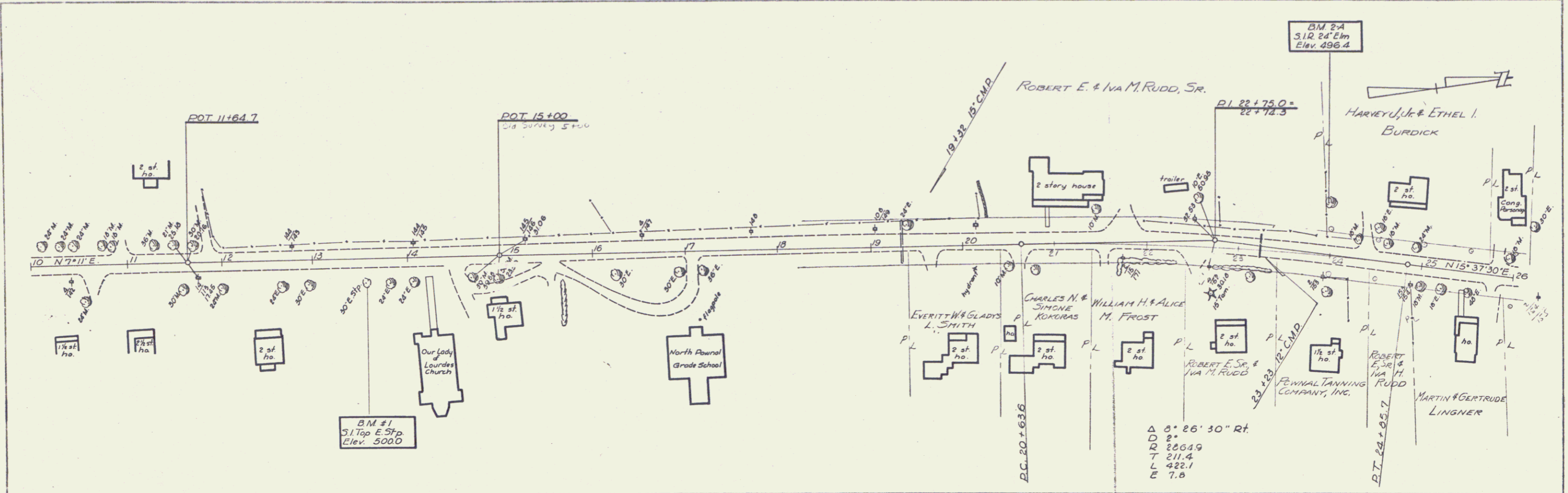
PROJECT NO. _____

SHEET 1A OF SHEETS

APPROVED CONSTRUCTION ENGINEER	APPROVED BRIDGE ENGINEER	APPROVED DISTRICT ENGINEER	APPROVED HIGHWAY ENGINEER	APPROVED CHIEF ENGINEER
DATE _____	DATE _____	DATE _____	DATE _____	DATE _____

PLAN
 DATE 5-26
 4-26
 BY J. W. WOOD
 CHECKED BY J. W. WOOD
 TRACED BY J. W. WOOD

PROFILE
 DATE 4-56
 4-56
 4-56
 BY J. W. WOOD
 CHECKED BY J. W. WOOD
 TRACED BY J. W. WOOD



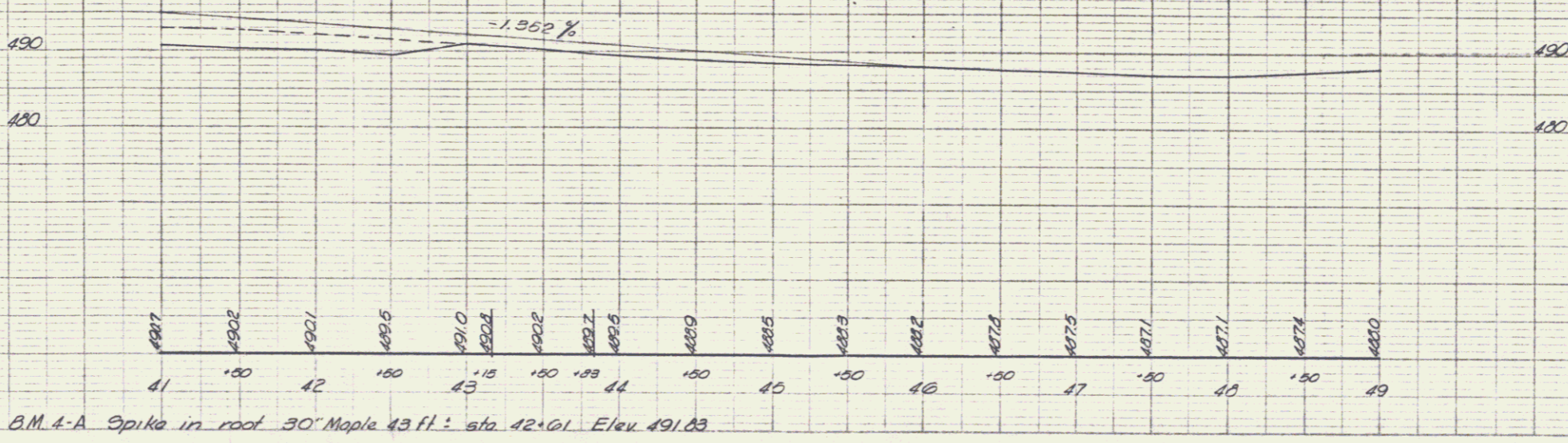
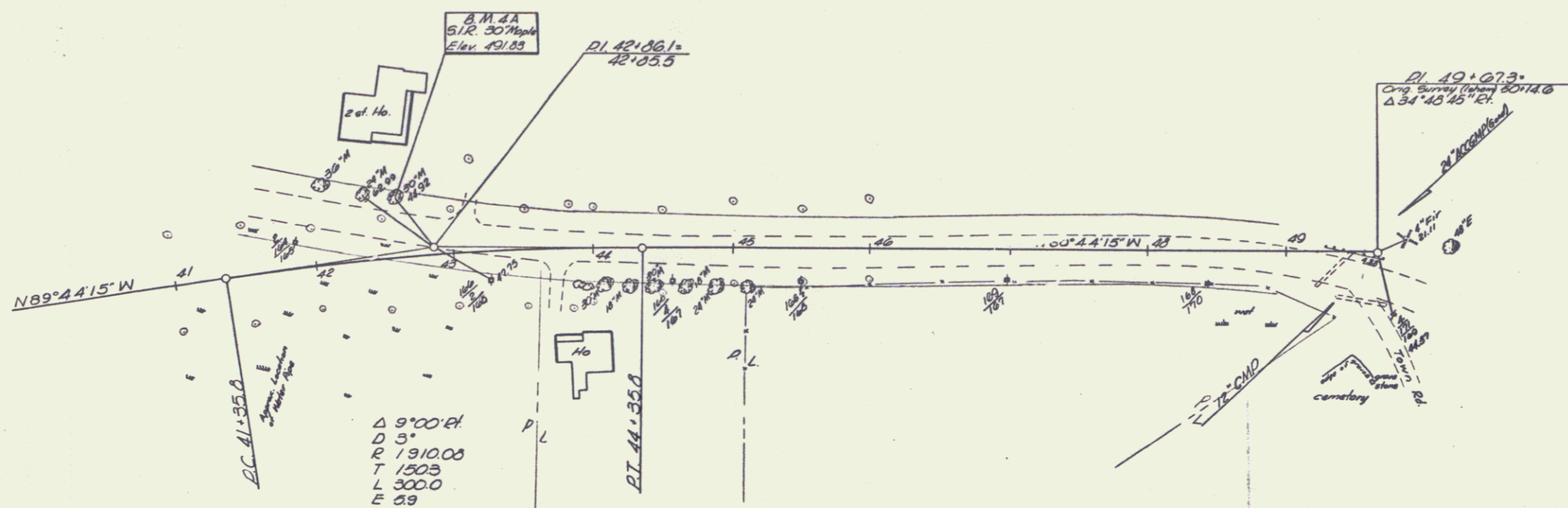
B.M. #1 Spike in top 36" elm stump 26 ft. rt. sta. 13+56 elevation 500.0 (assumed)

B.M. #2 Spike in roof 24" elm, 56 ft. lt. sta. 23+91, elevation 496.44

POW/NAL
 Proj. E No 136(B)
 Sheet 2 of 2

PLAN
 DRAWN BY: J. H. Cummings
 CHECKED BY: J. H. Cummings
 DATE: 5-58
 SHEET NO. 5-58

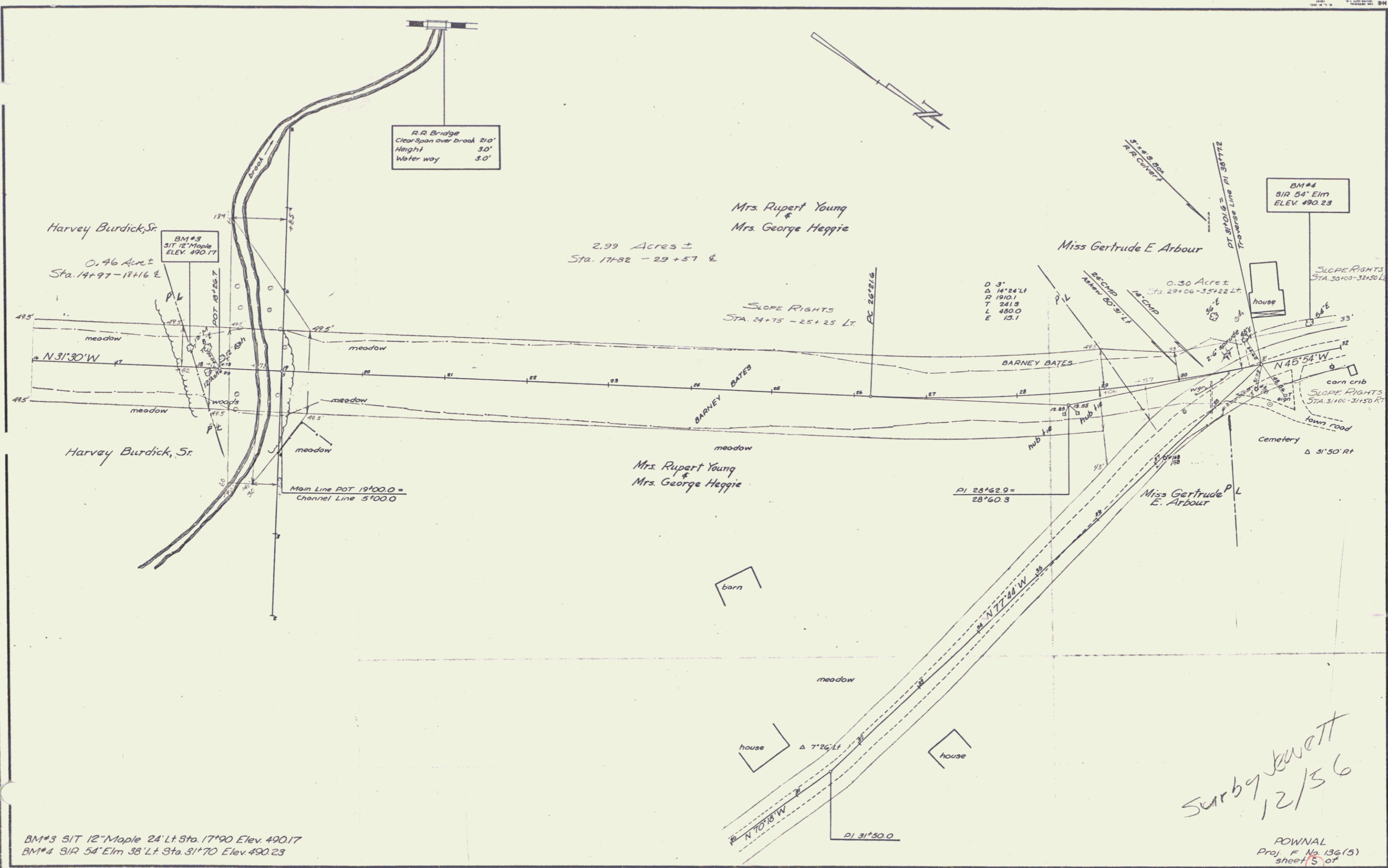
PROFILE
 DRAWN BY: J. H. Cummings
 CHECKED BY: J. H. Cummings
 DATE: 5-58
 SHEET NO. 5-58



B.M. 4-A Spike in roof 30' Maple 43 ft. sta 42+01 Elev. 491.83.

PLATE 1 - PLAN PROFILE
 REVISIONS
 DATE

DOWNAL
 Proj. E. No. 138(2)
 Sheet 5 of 5



R.R. Bridge
Clear span over brook 210'
Height 30'
Water way 30'

Harvey Burdick, Sr.
0.46 Acres
Sta. 17+97 - 18+16 E

BM #3
SIT 12" Maple
ELEV. 490.17

2.99 Acres ±
Sta. 17+82 - 29+57 E

Mrs. Rupert Young
&
Mrs. George Heggie

Miss Gertrude E. Arbour

BM #4
SIR 54" Elm
ELEV. 490.23

0.30 Acres
Sta. 29+00 - 35+22 Lt.

SLOPE RIGHTS
Sta. 24+75 - 25+25 Lt.

D 3'
Δ 14°24' Lt
R 190.1
T 241.3
L 480.0
E 13.1

SLOPE RIGHTS
Sta. 30+00 - 32+50 Lt.

N 31°30' W

Harvey Burdick, Sr.

BARNEY BATES

BARNEY BATES

N 45°54' W

Mrs. Rupert Young
&
Mrs. George Heggie

PI 28°52.0 =
28°50.3

Miss Gertrude
E. Arbour

barn

house Δ 7°26' Lt

house

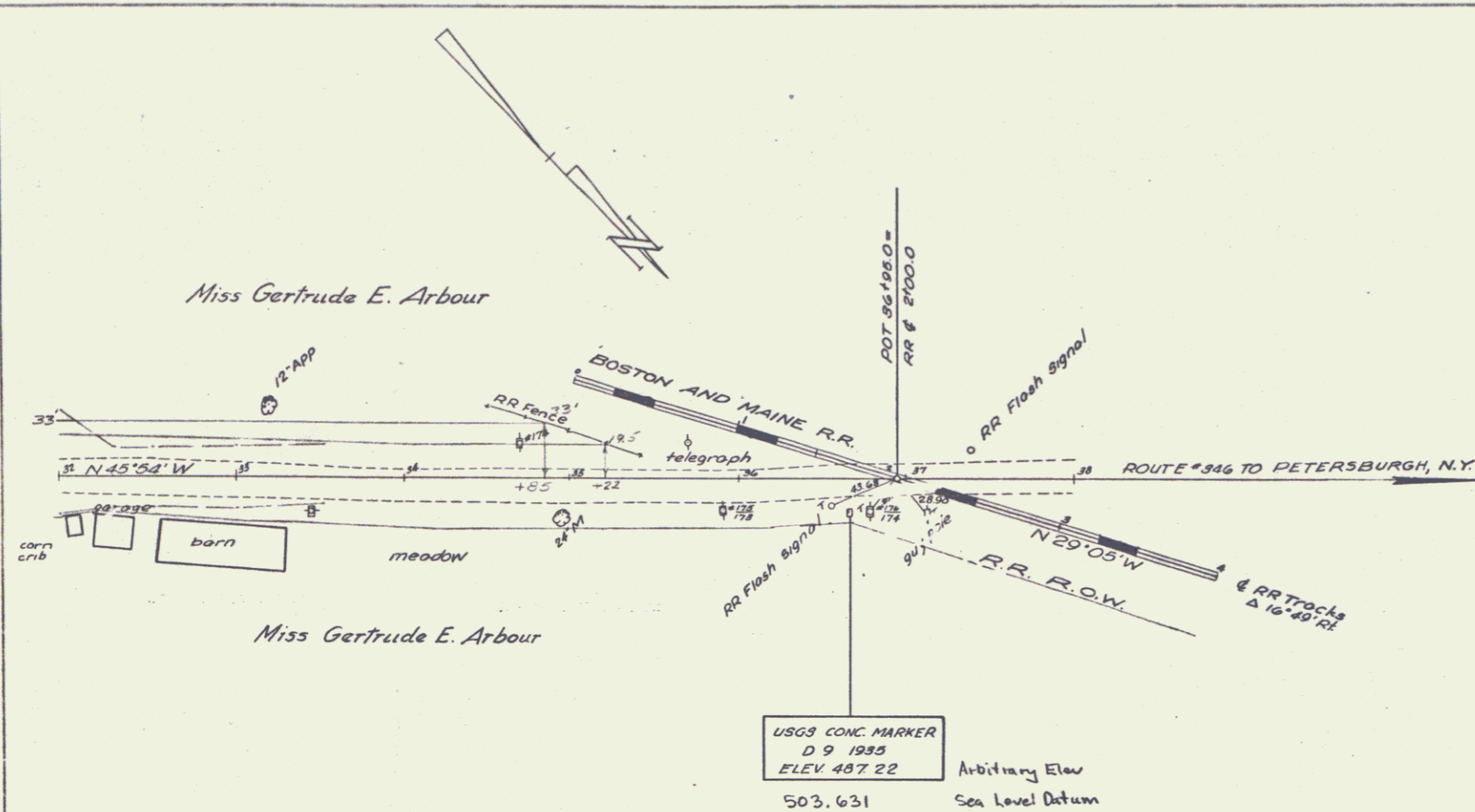
BM #3 SIT 12" Maple 24' Lt Sta. 17+90 Elev. 490.17
BM #4 SIR 54" Elm 38' Lt Sta. 31+70 Elev. 490.23

Surveyed by Jewett
12/36

ROWNAL
Proj. F No 136(5)
sheet 5 of

4/6

PLAN
 DATE 12/86
 PROJECT L'Plat
 DRAWN BY [illegible]
 CHECKED BY [illegible]
 NO. OF SHEETS 1



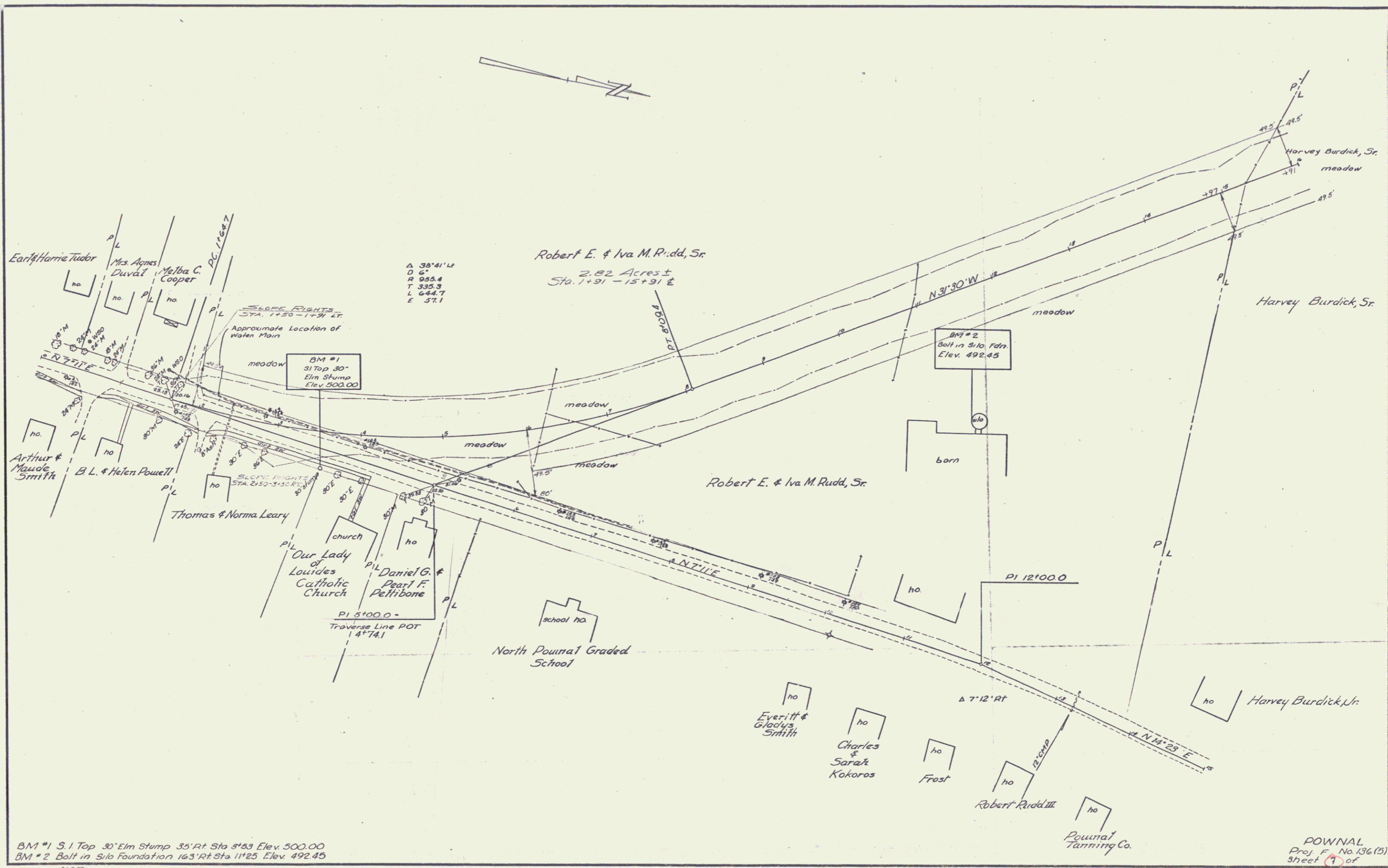
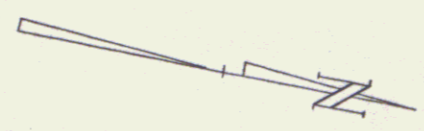
PROFILE
 DATE 1/86
 PROJECT L'Plat
 DRAWN BY [illegible]
 CHECKED BY [illegible]
 NO. OF SHEETS 1



DOWNAL
 Proj. F. NO 136(2)
 Sheet 6 of 7

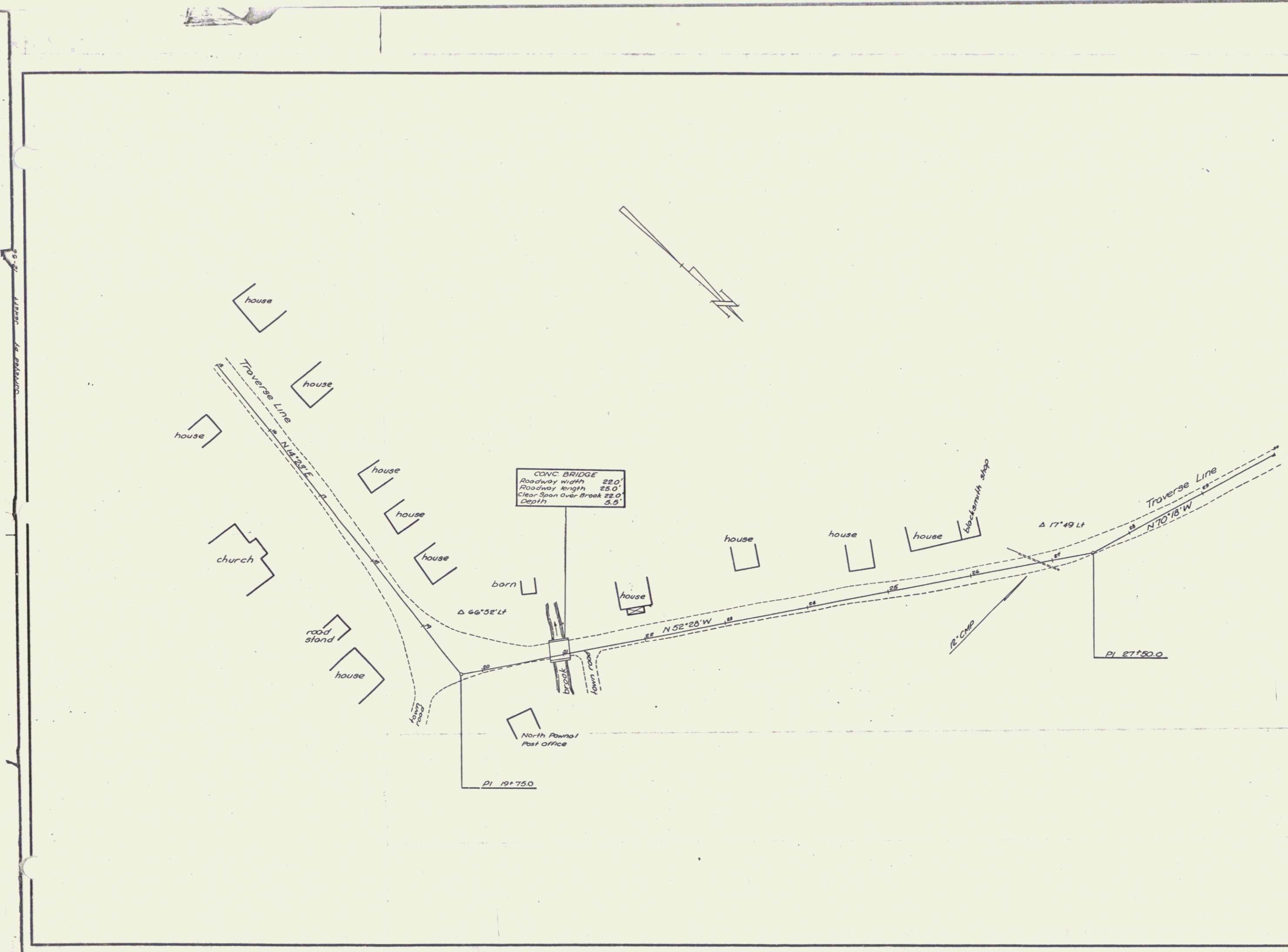
6 7

Surveyed by Jewell 12-26



BM #1 S. 1 Top 30' Elm Stump 35' Rt Sta 5+53 Elev. 500.00
 BM #2 Bolt in Silo Foundation 163' Rt Sta 11+25 Elev. 492.45

POWNAL
 Proj. No. 136 (5)
 Sheet 1 of 8



CONC BRIDGE
 Roadway width 22.0'
 Roadway length 25.0'
 Clear-Span over Brook 22.0'
 Depth 5.5'