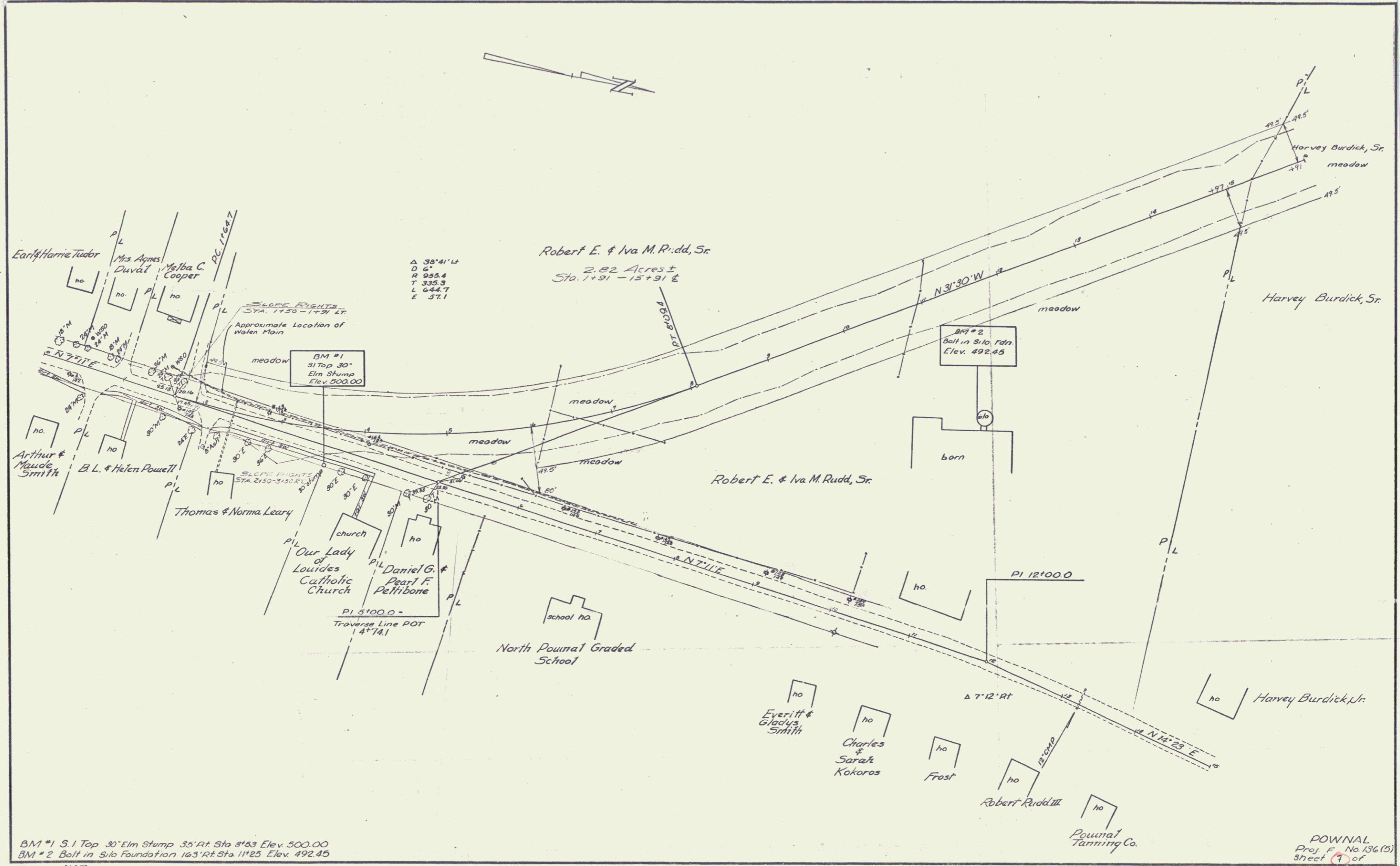


Surveyed by Jewell 12-26



Δ 38'41" L
 D 6'
 R 955.4
 T 335.3
 L 644.7
 E 37.1

Robert E. & Iva M. Rudd, Sr.
 2.82 Acres ±
 Sta. 1+91 - 15+91 ±

SLOPE RIGHTS
 STA. 1+50 - 1+91 ±
 Approximate Location of Water Main

BM #1
 S.I. Top 30"
 Elm Stump
 Elev. 500.00

BM #2
 Bolt in Silo Fdn.
 Elev. 492.45

SLOPE RIGHTS
 STA. 2150 - 3150 ±

PI 5+00.0
 Traverse Line POT
 14°14.1

PI 12+00.0

BM #1 S.I. Top 30" Elm Stump 35' RT Sta 5+53 Elev. 500.00
 BM #2 Bolt in Silo Foundation 163' RT Sta 11+25 Elev. 492.45

POWNAL
 Proj. No. 136 (5)
 Sheet 1 of 8