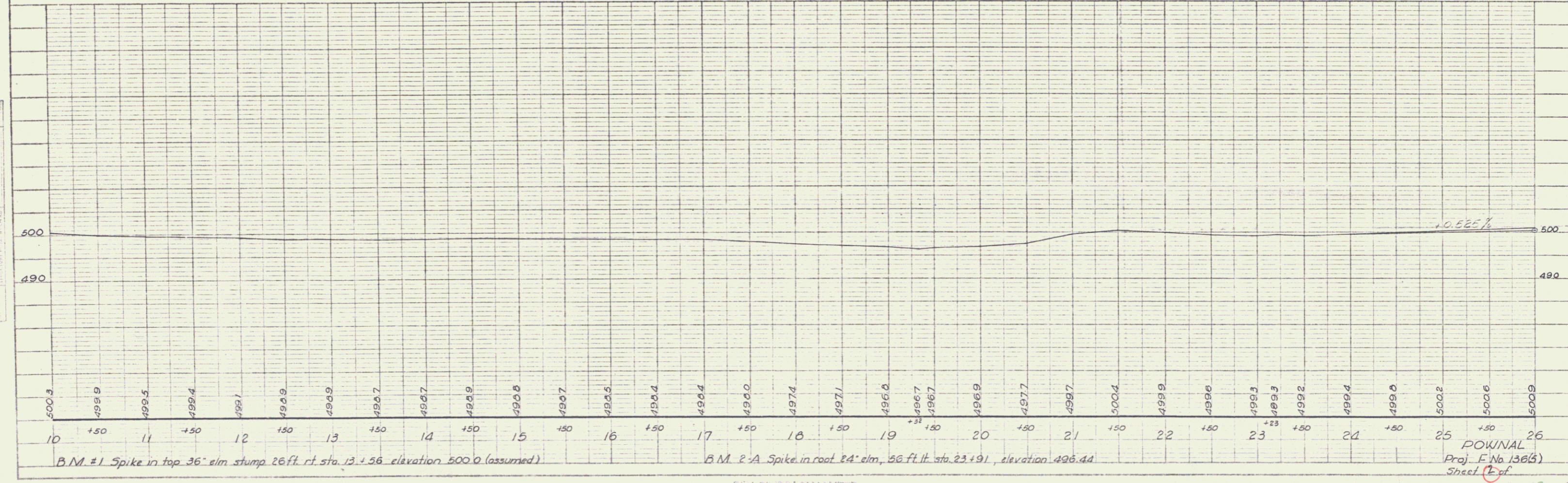
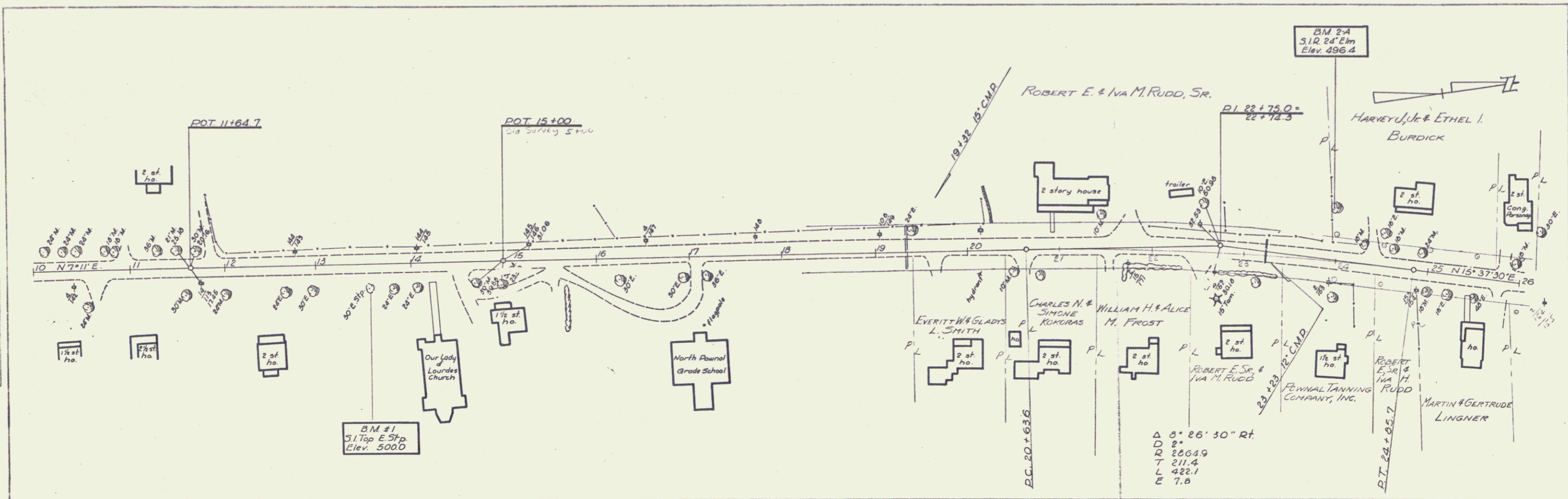


PLAN
 DATE 5-26
 4-26
 BY [Signature]
 CHECKED [Signature]
 NO. 103

PROFILE
 DATE 4-26
 4-26
 BY [Signature]
 CHECKED [Signature]
 NO. 103



B.M. #1 Spike in top 36" elm stump 26 ft. rt. sta. 13.56 elevation 500.0 (assumed)

B.M. #2 A Spike in roof 24" elm, 56 ft. lt. sta. 23.91, elevation 496.44

POWNAL
 Proj. E No 136(B)
 Sheet 12 of 12