

INDEX OF SHEETS

SHEET NO. 1 TITLE PAGE
 " 2 TYPICAL CROSS-SECTION OF IMPROVEMENT (CONTINUOUS MACADAM SURFACE COURSE)
 " 3 BANKING AND WIDENING TABLES
 " 4-8 PLAN AND PROFILE SHEETS
 " 11 STANDARD STRUCTURE SHEET 328 PIPE CULVERTS
 " 12 " " " 330 GUARD RAIL
 " 13 BARRICADES, SIGNS AND LIGHTS 3 B/I
 " 13A STANDARD CULVERT SHEET - SC-1
 " 14-27 CROSS SECTIONS
 STANDARD SHEETS 3-28, 3-29 & 3-30 SUBMITTED TO THE CHIEF ENGINEER ON MAY 16, 1933.

FED. ROAD DIST. NO.	STATE	ROUTE NO.	SECTION	SHEET NO.	TOTAL SHEETS
9	VT.	136 B	1936	1	37

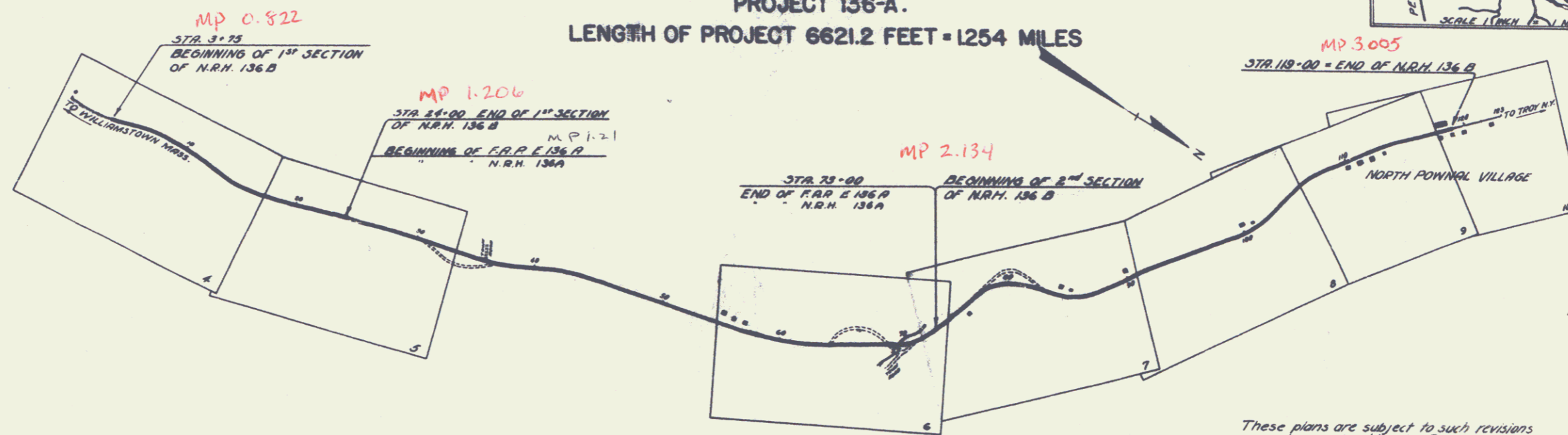
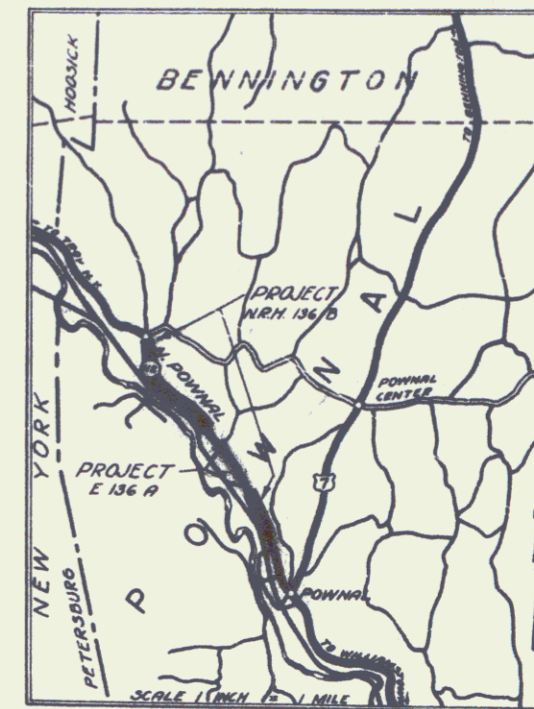
STATE OF VERMONT
 STATE HIGHWAY DEPARTMENT

PLAN AND PROFILE OF PROPOSED
 STATE HIGHWAY
 NATIONAL RECOVERY HIGHWAY PROJECT

TOWN OF POWNAL Pin# 912689

POWNAL NORTH POWNAL ROAD
 FROM 3000 FEET NORTH OF ITS INTERSECTION WITH
 ROUTE U.S.7 IN POWNAL VILLAGE, NORTHERLY 1.254 MILES
 TO THE RAILROAD STATION IN NORTH POWNAL, EXCLUDING
 PROJECT 136-A.

LENGTH OF PROJECT 6621.2 FEET = 1.254 MILES



CONVENTIONAL SIGNS

COUNTY LINE	GROUND ELEVATION	CURVE DATA
TOWN LINE	GRADE ELEVATION	
FENCE LINE		DEFLECTION ANGLE
STONE WALL		DEGREE OF CURVE
UNFENCED PROPERTY		RADIUS OF CURVE
GUARD RAIL		TANGENT DISTANCE
TRAVELED WAY		LENGTH OF CURVE
RAILROAD		EXTERNAL DISTANCE
RETAINING WALL		POINT OF INTERSECTION
CENTER LINE		POINT OF CURVE
SURVEY LINE		POINT OF TANGENT
CULVERT		POINT ON TANGENT
DROP INLET		
TROLLEY POLE		
POWER POLE		
TELEPHONE POLE		
TREES		
HEDGE		

SCALES

TITLE	1" = 500'
PLAN	1" = 30'
PROFILE HOR.	1" = 30'
VERT.	1" = 10'
CROSS SECTIONS	1" = 5'

These plans are subject to such revisions as may be required by the Bureau of Public Roads or the Commissioner of Highways. Construction is to be carried on in accordance with the plans and Standard Road and Bridge Specifications of 1933 with such revised specifications and special provisions as are submitted with these plans.

APPROVED July 1, 1933

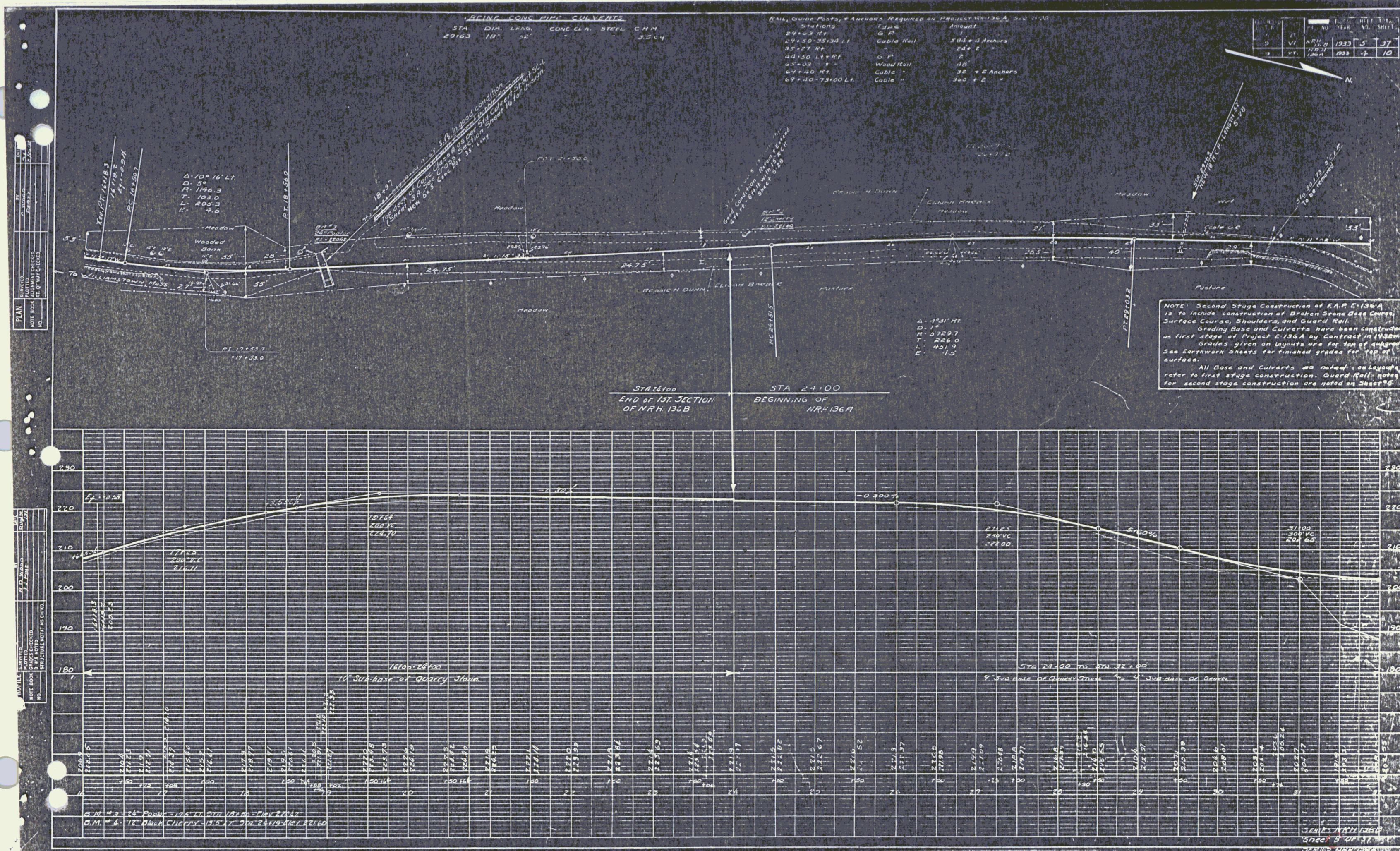
Commissioner of Highways

SUBMITTED BY ORDER OF THE STATE HIGHWAY BOARD

Rte VT 136 B

RECOMMENDED [Signature]
 DISTRICT ENGINEER BUREAU OF PUBLIC ROADS
 RECOMMENDED FOR APPROVAL [Signature]
 CHIEF ENGINEER BUREAU OF PUBLIC ROADS
 APPROVED [Signature]
 DIRECTOR - BUREAU OF PUBLIC ROADS
 SHEET 1

CORRECT SERIES 1936 No. 136 B FILED



CONCRETE PIPE CULVERTS

STA.	DIA.	LENG.	CONC. CL.	STEEL	C.M.
29163	18"	52'			3.264

RAIL, GUIDE PINS, & ANCHORS, REQUIRED ON PROJECT NR-136A, STA 2910

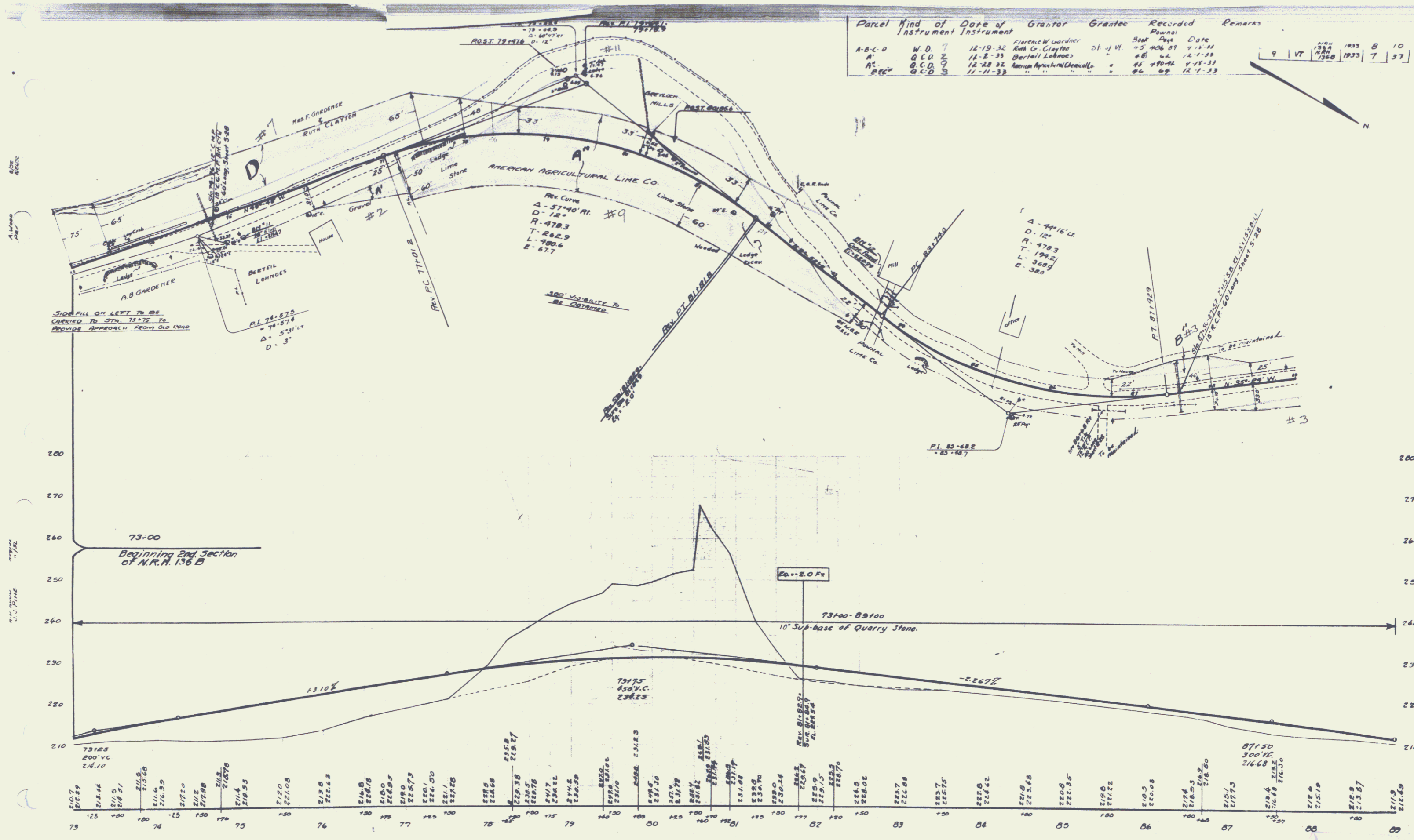
Stations	Items	Amount
29163 RT	Q.P.	1
29130-35+30 LT	Cable Rail	3 (4" x 4" Anchors)
35+27 RT	Q.P.	2
40+50 LT RT	Q.P.	2
40+50 RT	Wood Rail	40
67+40 RT	Cable	32 + 2 Anchors
69+40-73+00 LT	Cable	320 + 2

NO.	DATE	BY	NO. SHEET
1	VI	NR-136A	5
2	VI	NR-136A	7
3	VI	NR-136A	10

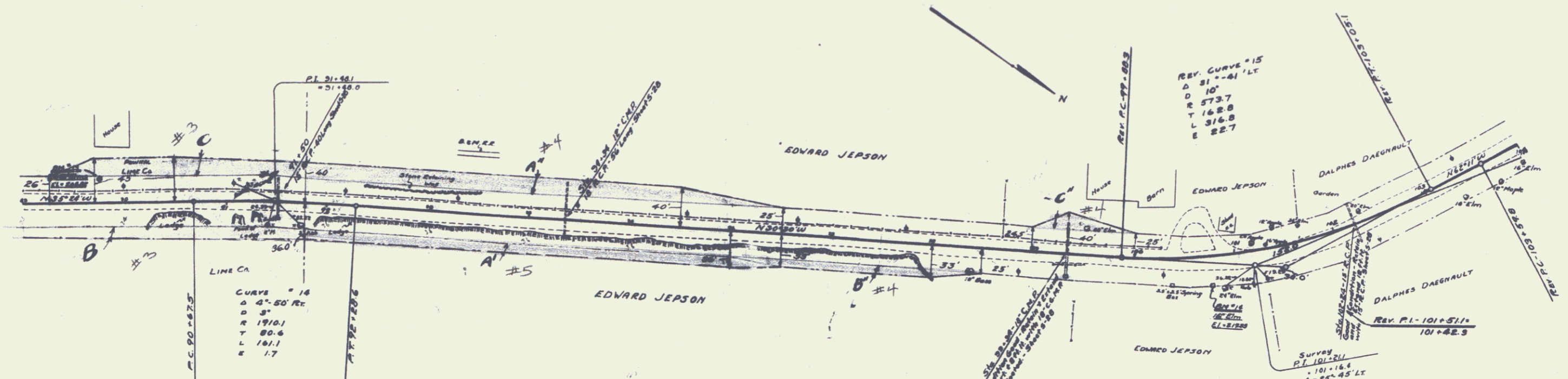
NOTE: Second Stage Construction of R.A.P. E-136A is to include construction of Broken Stone Base Course, Surface Course, Shoulders, and Guard Rail. Grading Base and Culverts have been constructed as first stage of Project E-136A by Contract in 1968. Grades given on layouts are for top of embankment. See Elevation Sheets for finished grades for top of surface. All Base and Culverts as noted elsewhere refer to first stage construction. Guard Rail notes for second stage construction are noted on Sheet 6.

POOR ORIGINAL COPY

Parcel	Kind of Instrument	Date of Instrument	Grantor	Grantee	Recorded	Remarks
A-B-C-D	W.D.	12-19-32	Francis Gardner	St. J. H.	75 406 81	4-11-33
A'	O.C.D.	12-2-33	Ruth Clayton	Bertell Lohnes	85 62	12-1-33
A''	O.C.D.	12-28-32	American Agricultural Line Co.	"	85 490 82	1-11-33
B-C-D	O.C.D.	11-11-33	"	"	86 67	12-1-33

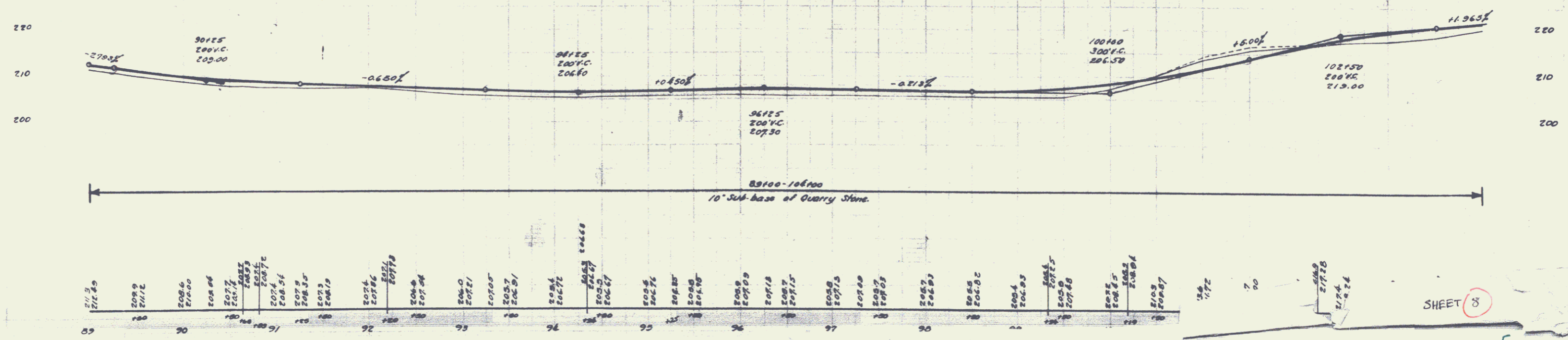


B.M. # 11 Spike in Root 16' Elm 21' E of Sta. 75+00 Elev. 213.47
 B.M. # 12 Pine 9' Post on Conc. Corner Post of Mill - 35' E of Sta. 83+45 Elev. 220.29

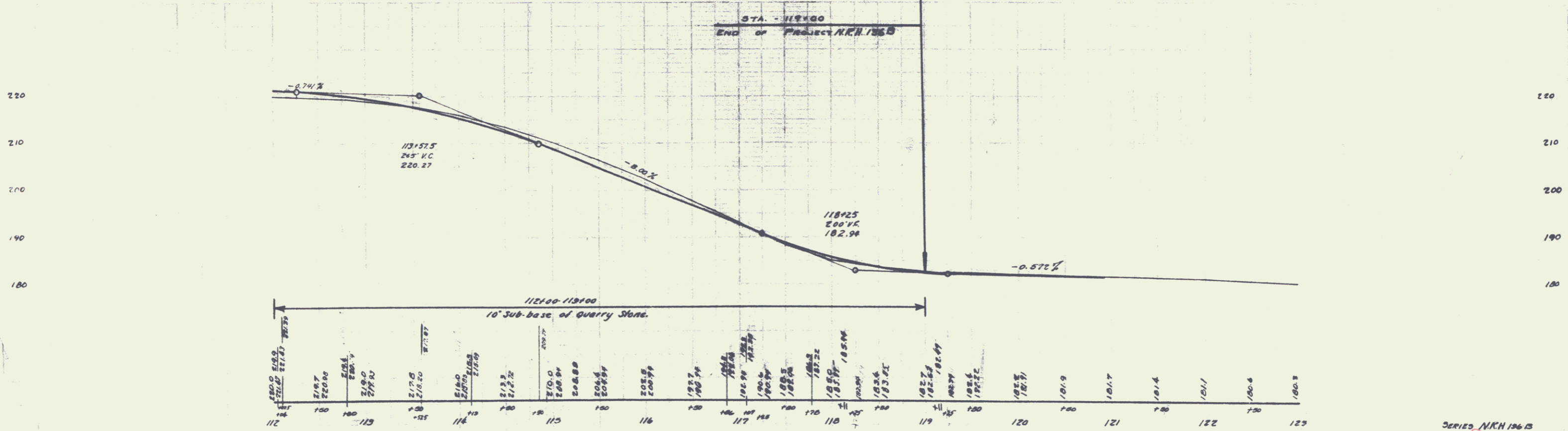
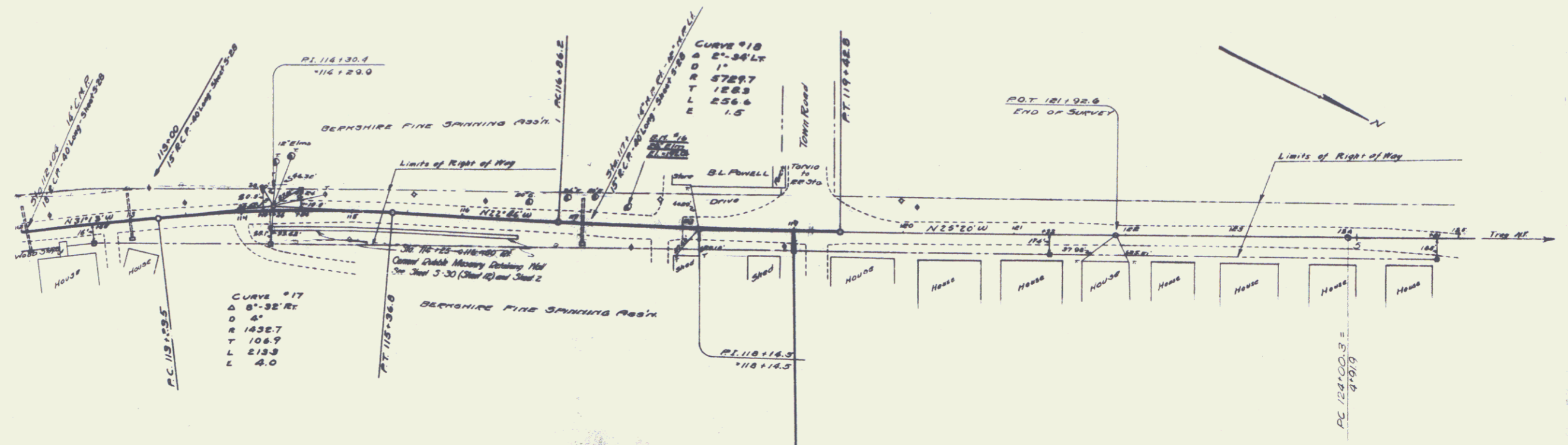


LINE CA
 CURVE #14
 Δ 4°-20' R
 D 9'
 R 1910.1
 T 80.6
 L 101.1
 E 1.7

Parcel	Kind of Instrument	Date of Grant	Grantor	Grantee	Recorded	Remarks
A-B-C	G.C.D. 3	11-1-33	Edward Jepson	Chas. H. ...	46 65	11-1-33
A'	G.C.D. 5	11-1-33	Edward Jepson	"	46 60	12-1-33
A'-B'-C'	W.D. 4	9-20-33	"	"	46 34+24	9-20-33



D.M. #13 - Spike in Trunk 10' from Elm - 22' LT. STA 89+71 Elev 205.82



B.M. #6 ON TRUNK 26' EIM - 13.5' LT STA 117+48 - ELEV 192.04