

INDEX OF SHEETS

SHEET NO.	TITLE PAGE	DESCRIPTION
1	TYPICAL CROSS-SECTION OF IMPROVEMENT	2 1/2" CRUSHED STONE M.I.P. SURFACE COURSE WITH CUTBACK ASPHALT & PRIME COAT OF REFINED TAR ITEMS 27, 30 & 31
2	BANKING AND WIDENING TABLES	
3-8	PLAN AND PROFILE	
9	STANDARD STRUCTURE SHEET S 28	PIPE CULVERTS
10	S 30A	DRAINAGE STRUCTURES
11	S 40	BARRICADES, SIGNS & LIGHTS
12	S 41	ROUNDING OF SLOPES
12A	S 30	GUARD RAIL
13-22	CROSS SECTIONS	

STANDARD STRUCTURE SHEETS APPROVED BY THE CHIEF ENGINEER VERMONT STATE DEPARTMENT OF HIGHWAYS

S 28	APRIL	25,	1941
S 30	NOV.	10,	1947
S 30A	APRIL	19,	1941
S 40	DEC.	18,	1945

STATE OF VERMONT
STATE HIGHWAY DEPARTMENT

PLAN AND PROFILE OF PROPOSED
STATE HIGHWAY
SECONDARY PROJECT

TOWN OF GRAND ISLE

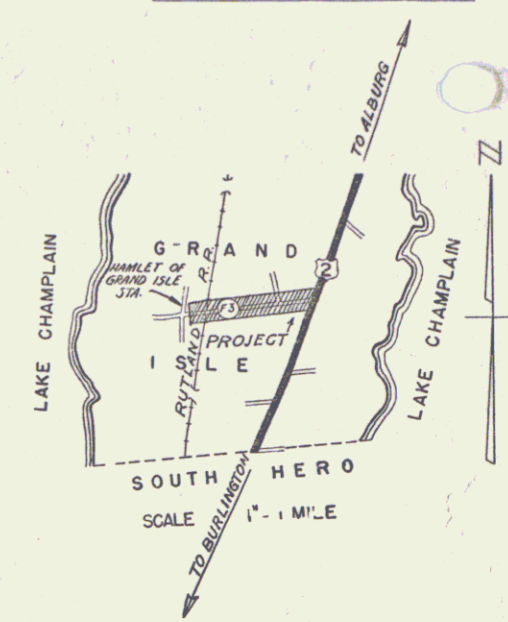
ROUTE F3
ROOSEVELT FERRY ROAD

Pin # 992685

BEGINNING AT THE INTERSECTION OF ROUTE US 2 AND ROUTE F-3 IN GRAND ISLE AND EXTENDING WESTERLY 6319.0 FT.
LENGTH OF PROJECT 6319.0 FT. = 1.197 MILES

RECORD PLANS
Prepared by A.E. Pelquin June 1949
Resident Engineer F.W. Badger

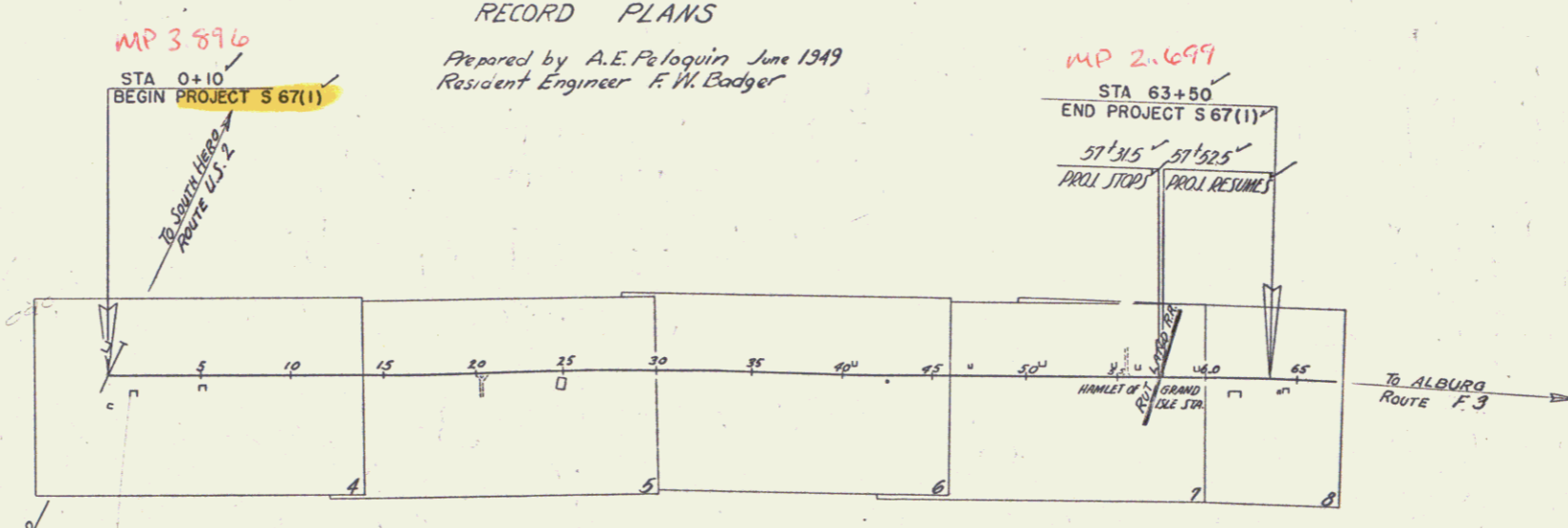
FED. ROAD DIST. NO.	STATE	PROJ. NO.	FISCAL YEAR	SHEET NO.	TOTAL SHEETS
9	Vt.	67(1)	1947	1	22



Grand Isle 9/10

84.48

RIGHT-OF-WAY DIVISION
TOWN FILE
PERPETUAL
Town of Grand Isle
(To Be Returned To R.O.W. Division)



RIGHT-OF-WAY DIVISION
TOWN FILE
PERPETUAL
Town of Grand Isle
(To Be Returned To R.O.W. Division)

APPROVED: 18 Feb. 1949
H. E. Sargent
COMMISSIONER OF HIGHWAYS
SUBMITTED BY ORDER OF THE STATE HIGHWAY BOARD

PREPARED BY: Grand Isle
SYMBOL: S 67(1)
TYPE: 2 1/2" in Crushed Stone M.I.P.
LENGTH: 1.197 MI.
DATE: 1949

FOR VIEWS FROM THE INTERSECTION OF ROUTE US-2 AND ROUTE F-3 IN GRAND ISLE EXTENDING WESTERLY 6319.0 FT.

CONTRACT: R.F. Carpenter
CONTRACT NO.: 22, 1948

GRAND ISLE S67(1)
RECORD PLANS
Contract - R.F. Carpenter
Contract No. 22, 1948

ITEM	DATE	BY
GROUND ELEVATION	DATUM	LINE
GRADE ELEVATION	DATUM	LINE

CURVE DATA

DEFLECTION ANGLE	Δ
DEGREE OF CURVE	D
RADIUS OF CURVE	R
TANGENT DISTANCE	T
LENGTH OF CURVE	L
EXTERNAL DISTANCE	E
POINT OF INTERSECTION	P. I.
POINT OF CURVE	P. C.
POINT OF TANGENT	P. T.
POINT ON TANGENT	P. O. T.

SCALES

TITLE	1" = 500'
TYPICAL	1" = 2'
PLAN	1" = 50'
PROFILE HORIZONTAL	1" = 50'
PROFILE VERTICAL	1" = 10'
CROSS SECTIONS	1" = 5'

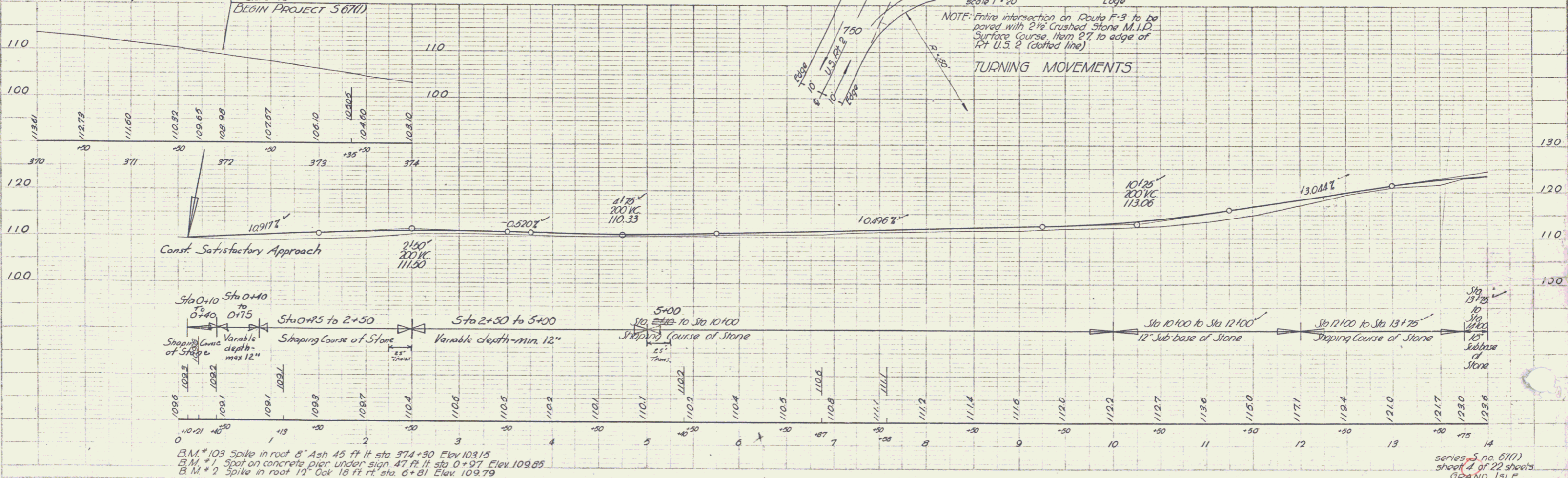
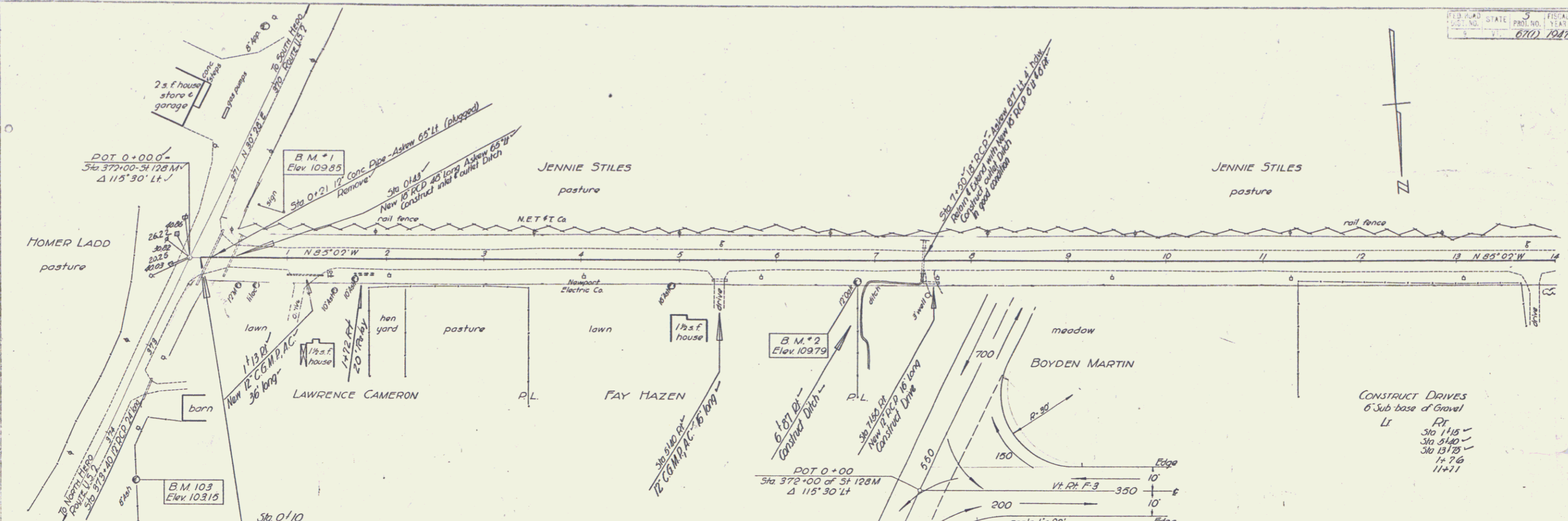
THESE PLANS ARE SUBJECT TO SUCH REVISIONS AS MAY BE REQUIRED BY THE PUBLIC ROADS ADMINISTRATION OR THE COMMISSIONER OF HIGHWAYS.

CONSTRUCTION IS TO BE CARRIED ON IN ACCORDANCE WITH THE PLANS AND THE STANDARD ROAD AND BRIDGE SPECIFICATIONS OF 1936, AS APPROVED DECEMBER 25TH, 1936 BY THE PUBLIC ROADS ADMINISTRATION, INCLUDING ALL SUBSEQUENT APPROVED REVISIONS AND SUCH REVISED SPECIFICATIONS AND SPECIAL PROVISIONS AS ARE SUBMITTED WITH THE PLANS.

APPROVED: 13 Feb. 1949
A. W. Bennett
HIGHWAY ENGINEER

APPROVED: 14 Feb. 1949
H. E. Sargent
DISTRICT HIGHWAY COMMISSIONER

SERIES S NO. 67(1) FILED
SHEET 1 OF 22

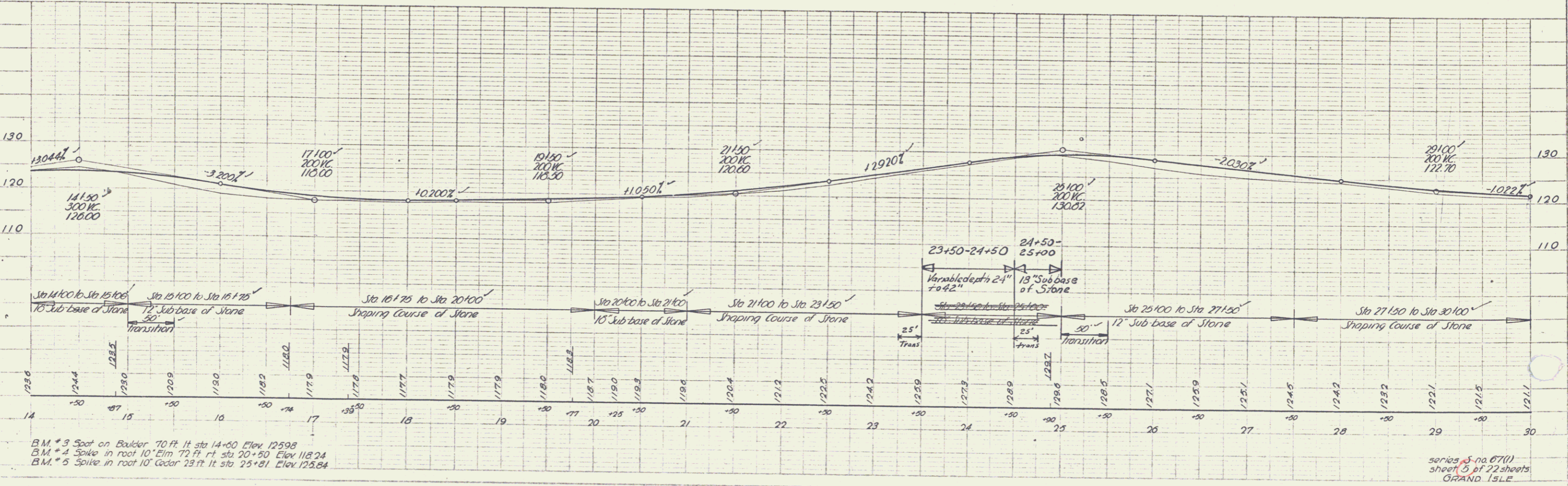
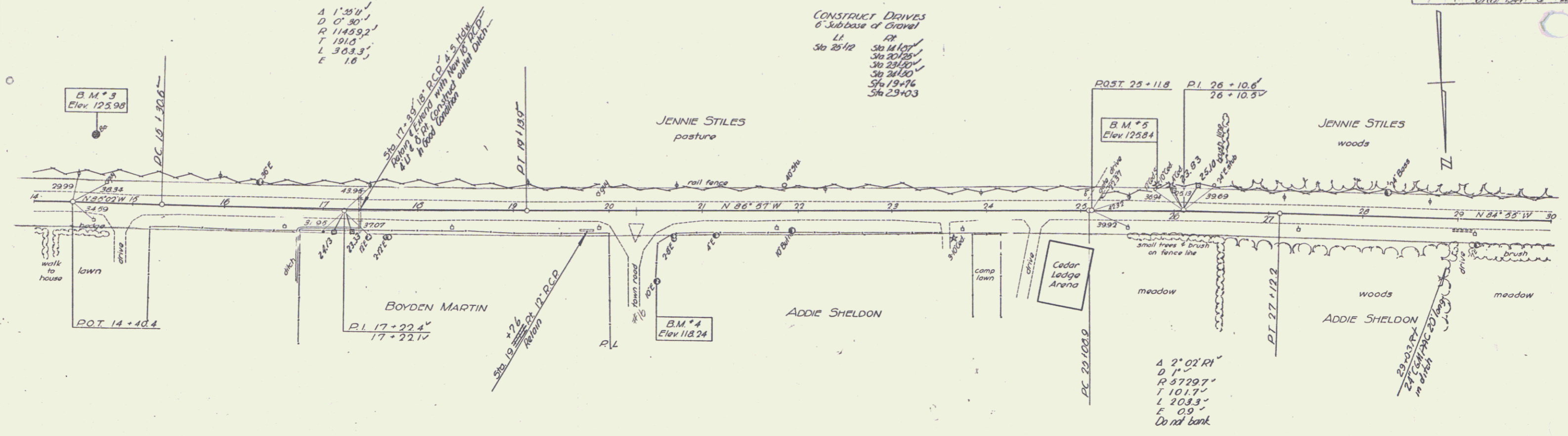


Jones
 Jones
 Jones

Jones
 Jones
 Jones

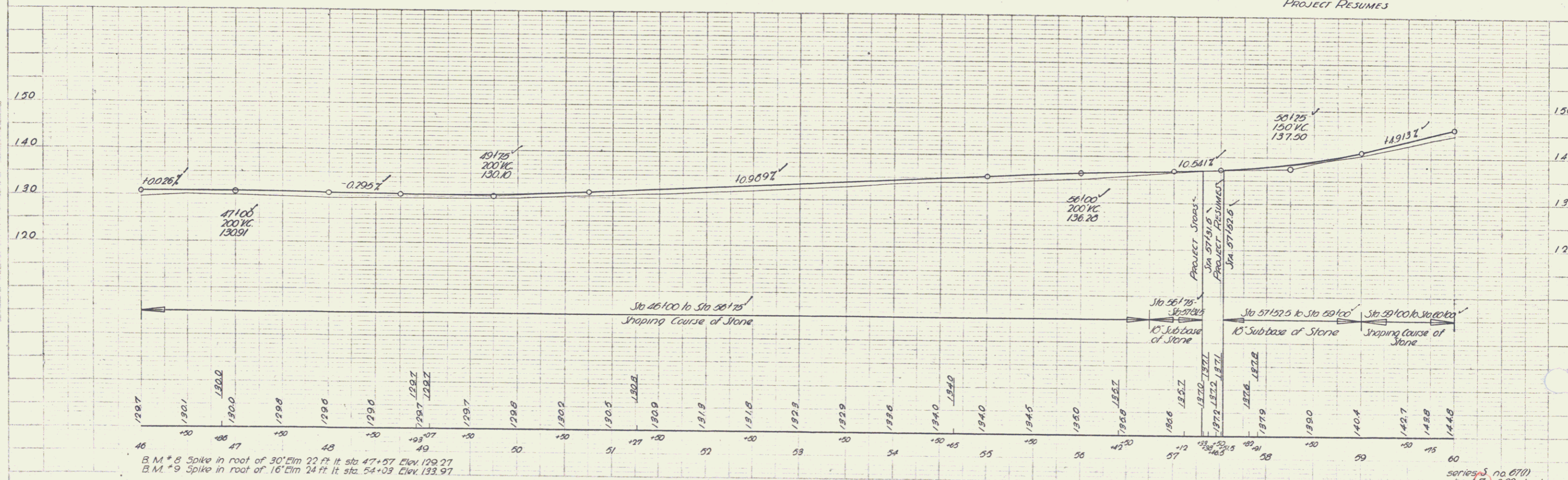
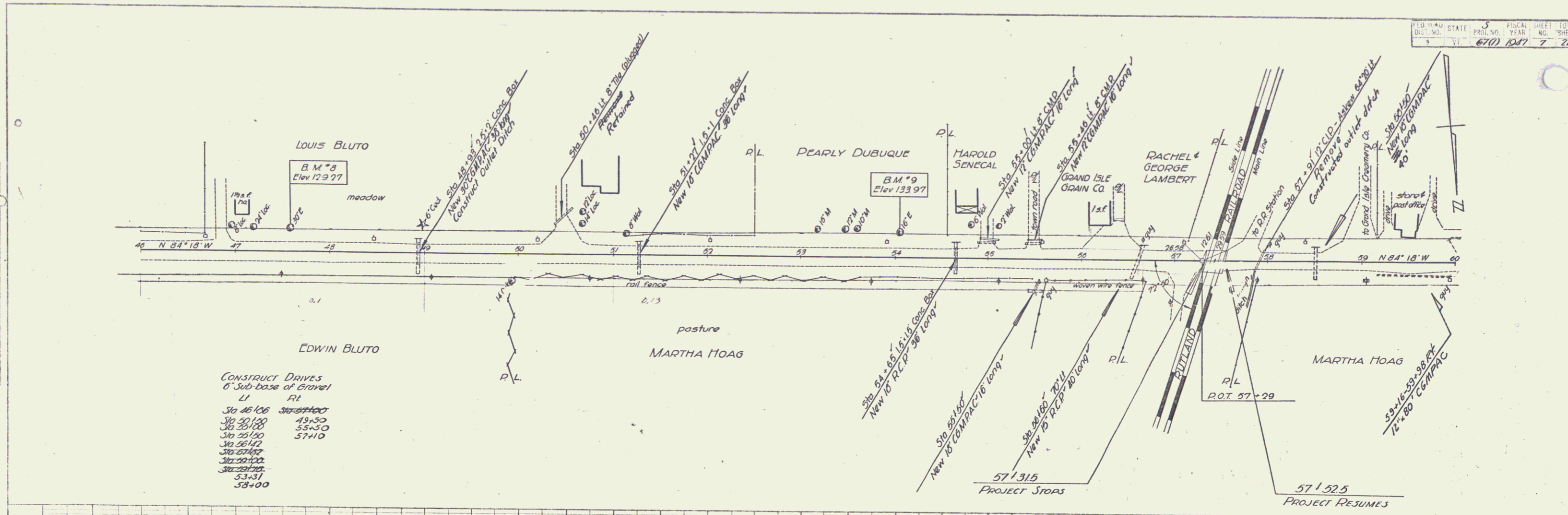
B.M. # 103 Spike in root 6" Ash 45 ft ft sta 374+30 Elev 103.15
 B.M. # 1 Spot on concrete pier under sign 47 ft ft sta 0+97 Elev 109.85
 B.M. # 2 Spike in root 12" Oak 18 ft ft sta 6+81 Elev 109.79

series S no. 6711
 sheet 4 of 22 sheets
 GRAND ISLE



9-47
 Jones
 9-47

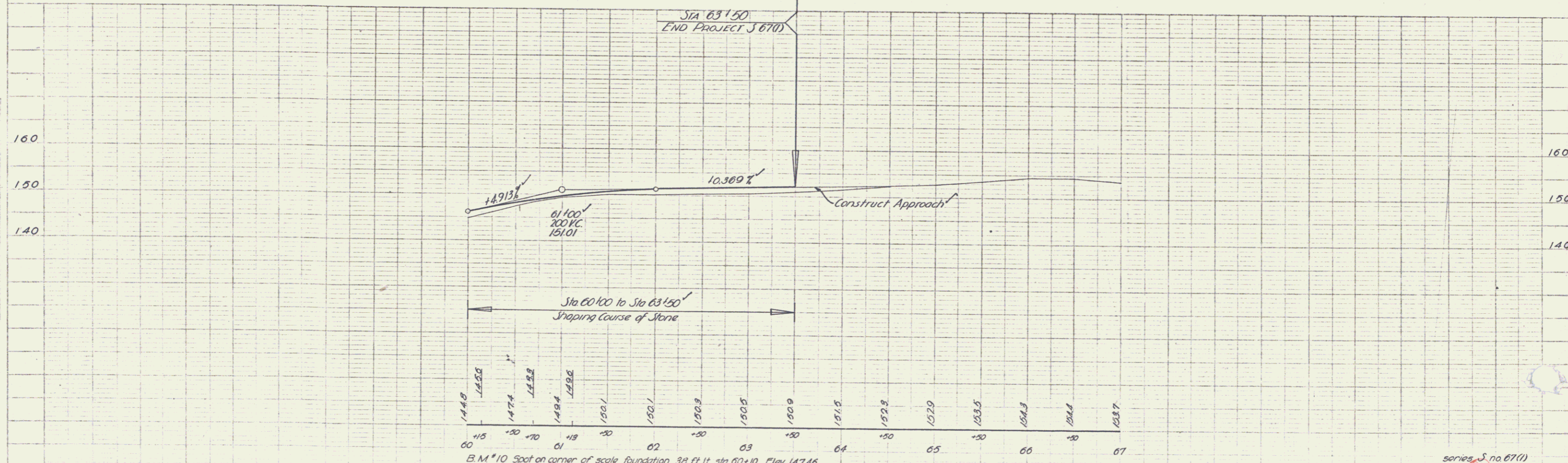
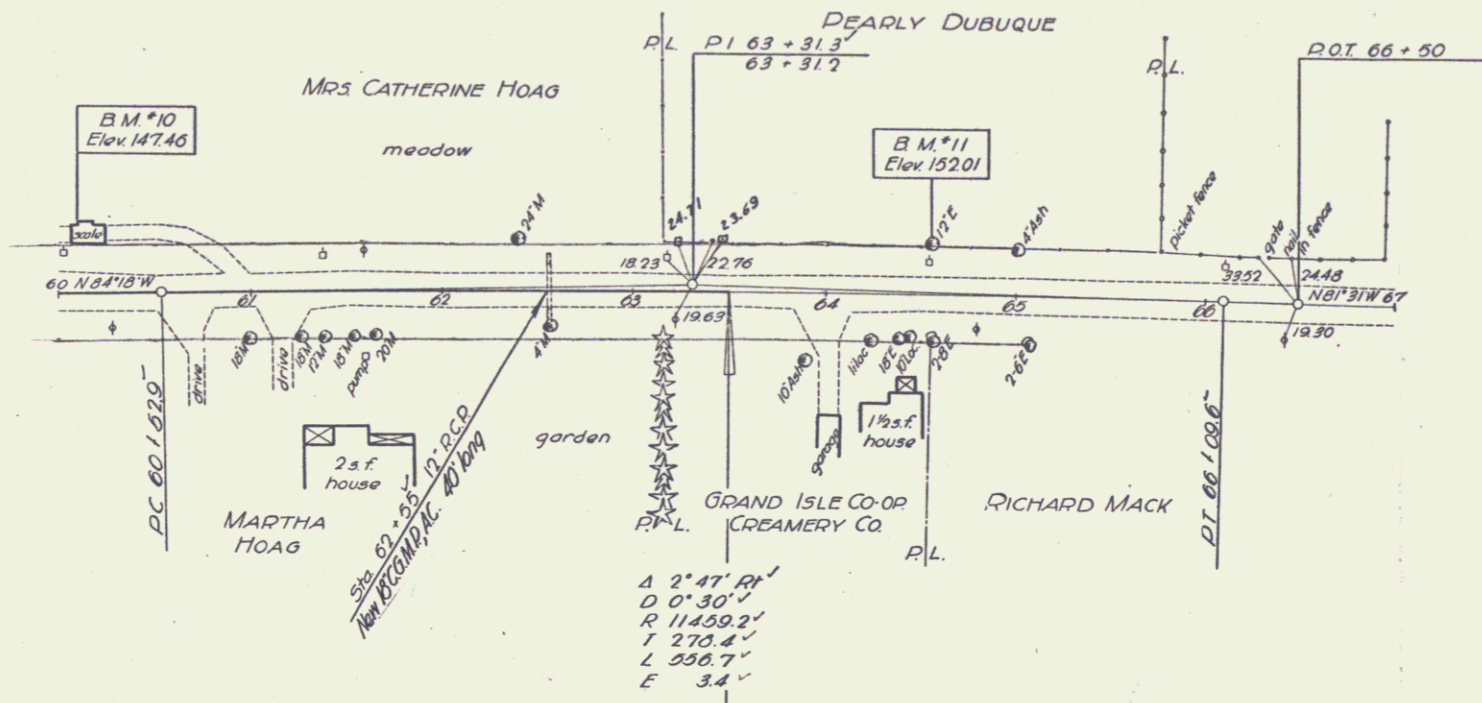
9-47
 Jones
 9-47



B.M. #8 Spike in roof of 30' Elm 22 ft ft sta 47+57 Elev. 129.27
 B.M. #9 Spike in roof of 16' Elm 24 ft ft sta 54+03 Elev. 133.97

series no. 6710
 sheet 7 of 22 sheets
 GRAND ISLE

CONSTRUCT DRIVES
 6' Sub base of Gravel
 12" R.L.
 Stationing Sta 60+70'
 Sta 61+13'



B.M. #10 Spot on corner of scale foundation 38 ft 11" sta 60+10 Elev 147.46
 B.M. #11 Spike in roof of 12' x 12' 2 1/2" ft. sta. 64+54 Elev. 152.01

series J no 67(1)
 sheet 6 of 22 sheets
 GRAND ISLE

Vertical Curve
 8-47
 9-47

Vertical Curve
 8-47
 9-47