

OF SHEETS

CROSS-SECTION OF IMPROVEMENT AND WIDENING TABLES  
 PROFILE  
 STATION STA 96104  
 STRUCTURE SHEET

- 28 PIPE CULVERTS
- 30 GUARD RAIL
- 30A DRAINAGE STRUCTURES
- 40 BARRICADES, SIGNS & LIGHTS
- 41 ROUNDING OF SLOPES

STRUCTURE SHEETS APPROVED BY THE CHIEF VERMONT STATE DEPARTMENT OF HIGHWAYS

- 28 APRIL 26, 1941
- 30 NOVEMBER 10, 1947
- 30A APRIL 19, 1941
- 40 DECEMBER 18, 1945

STATE OF VERMONT  
 STATE HIGHWAY DEPARTMENT

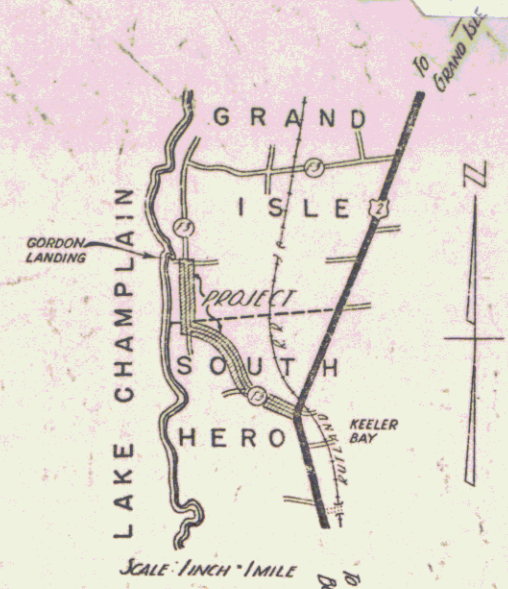
PLAN AND PROFILE OF PROPOSED  
 STATE HIGHWAY  
 SECONDARY PROJECT.

TOWNS SO. HERO-GRAND ISLE

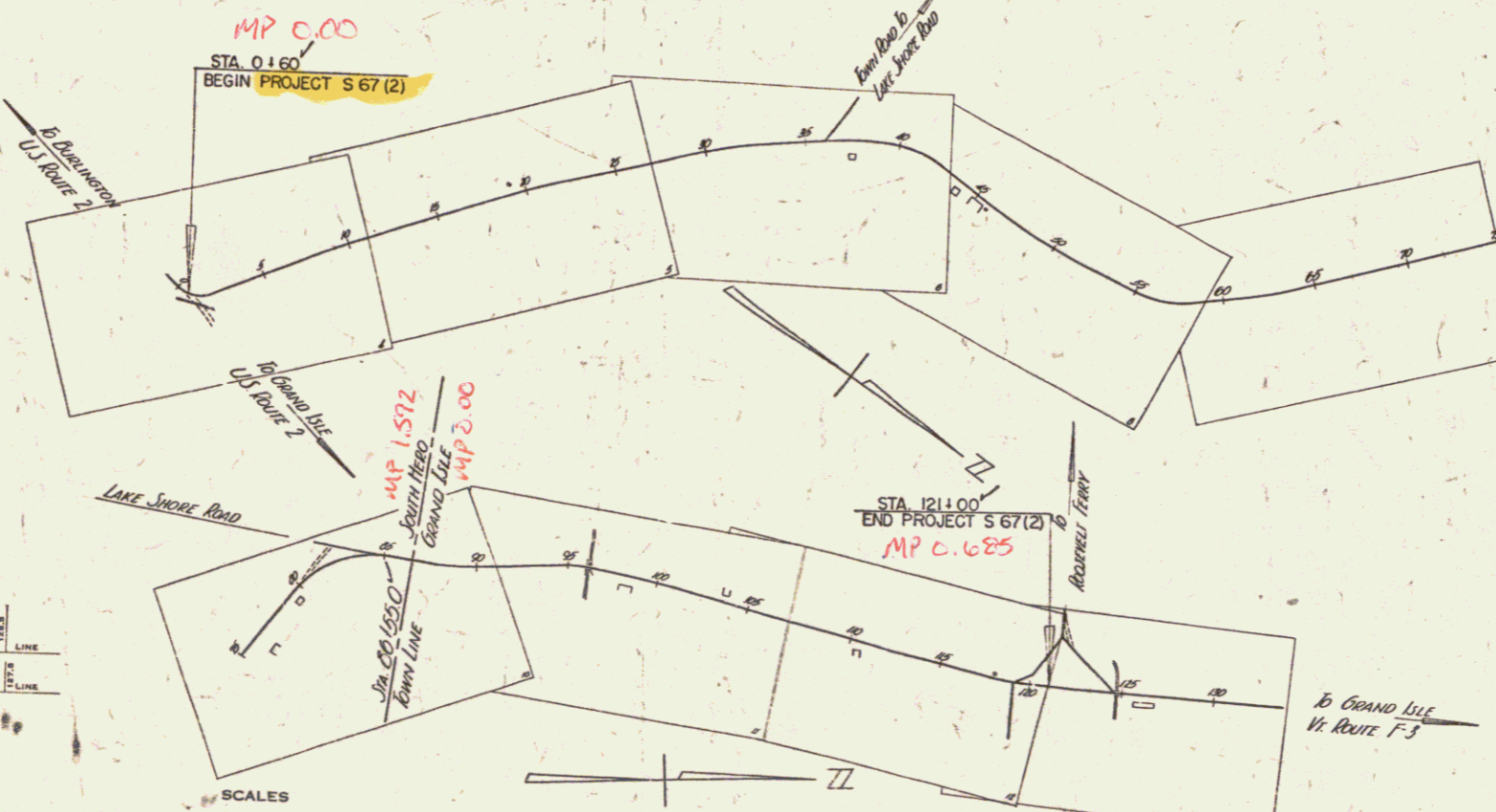
ROUTE F 3  
 ROOSEVELT FERRY ROAD Pin#99R683

BEGINNING AT THE INTERSECTION OF ROUTE US 2 AND ROUTE F 3 IN THE TOWN OF SOUTH HERO AND EXTENDING NORTHWESTERLY 12042.5 FT. LENGTH OF PROJECT 12042.5FT=2.281 MILES

FED. ROAD DIST. NO.	STATE	ROUTE NO.	SECTION	DATE
9	Vt.	67(2)	7	37



RECORD PLANS  
 Prepared by A. W. Lane  
 Resident Engineer F. W. Badger



RIGHT-OF-WAY DIVISION  
 TOWN FILE  
 PERPETUAL.

Town of VT 314  
 (To Be Returned To R.O.W. Division)

APPROVED: 14 Feb. 1948  
 H. E. August  
 COMMISSIONER OF HIGHWAYS

SUBMITTED BY ORDER OF THE STATE HIGHWAY BOARD

RECOMMENDED FOR APPROVAL  
 DISTRICT ENGINEER  
 PUBLIC ROADS ADMINISTRATION  
 FEDERAL WORKS AGENCY

THESE PLANS ARE SUBJECT TO SUCH REVISIONS AS MAY BE REQUIRED BY THE PUBLIC ROADS ADMINISTRATION OR THE COMMISSIONER OF HIGHWAYS.  
 CONSTRUCTION IS TO BE CARRIED ON IN ACCORDANCE WITH THE PLANS AND THE STANDARD ROAD AND BRIDGE SPECIFICATIONS OF 1936, AS APPROVED DECEMBER 29TH, 1936 BY THE PUBLIC ROADS ADMINISTRATION, INCLUDING ALL SUBSEQUENT APPROVED REVISIONS AND SUCH REVISED SPECIFICATIONS AND SPECIAL PROVISIONS AS ARE SUBMITTED WITH THE PLANS.

APPROVED: 13 Feb. 1948 Highway Engineer	APPROVED: 14 Feb. 1948 District Highway Commissioner	SERIES J No. 67(2) FILED SHEET 1 OF 37
--	---	---

4314

SOUTH HERO-GRAND ISLE S 67(2)  
 RECORD PLANS  
 CONTRACTOR-R.F. Carpenter  
 Construction Completed Oct. 22, 1948

GROUND ELEVATION	DATUM	LINE
GRADE ELEVATION	DATUM	LINE

CURVE DATA

DEFLECTION ANGLE	Δ
DEGREE OF CURVE	D
RADIUS OF CURVE	R
TANGENT DISTANCE	T
LENGTH OF CURVE	L
EXTERNAL DISTANCE	E
POINT OF INTERSECTION	P. I.
POINT OF CURVE	P. C.
POINT OF TANGENT	P. T.
POINT ON TANGENT	P. O. T.

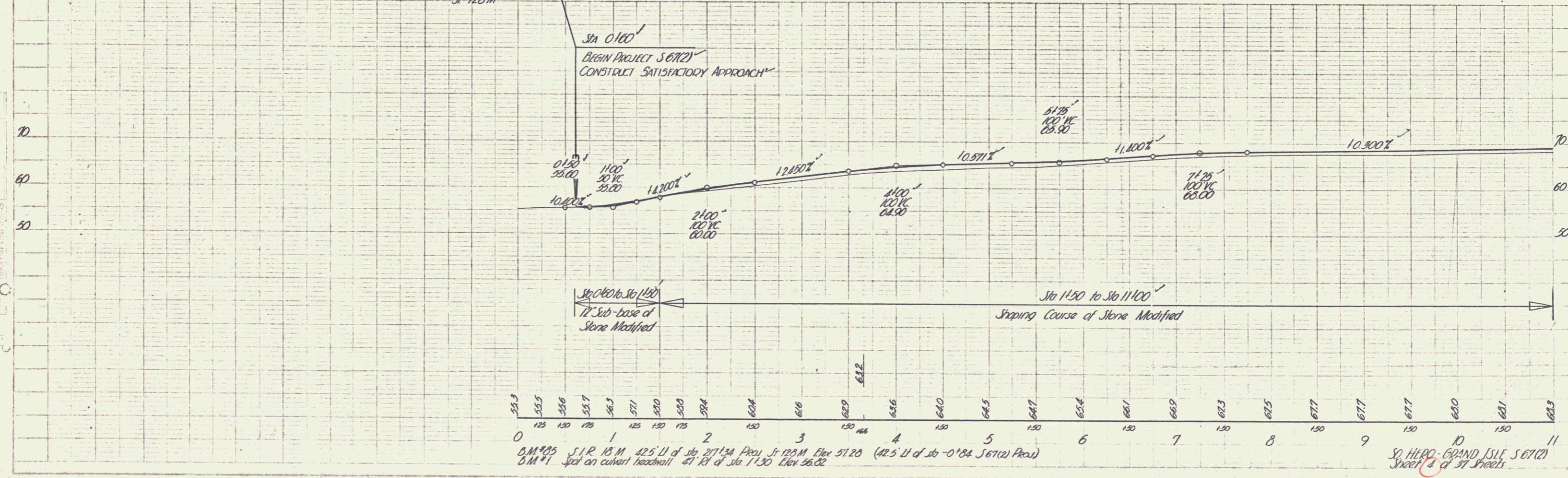
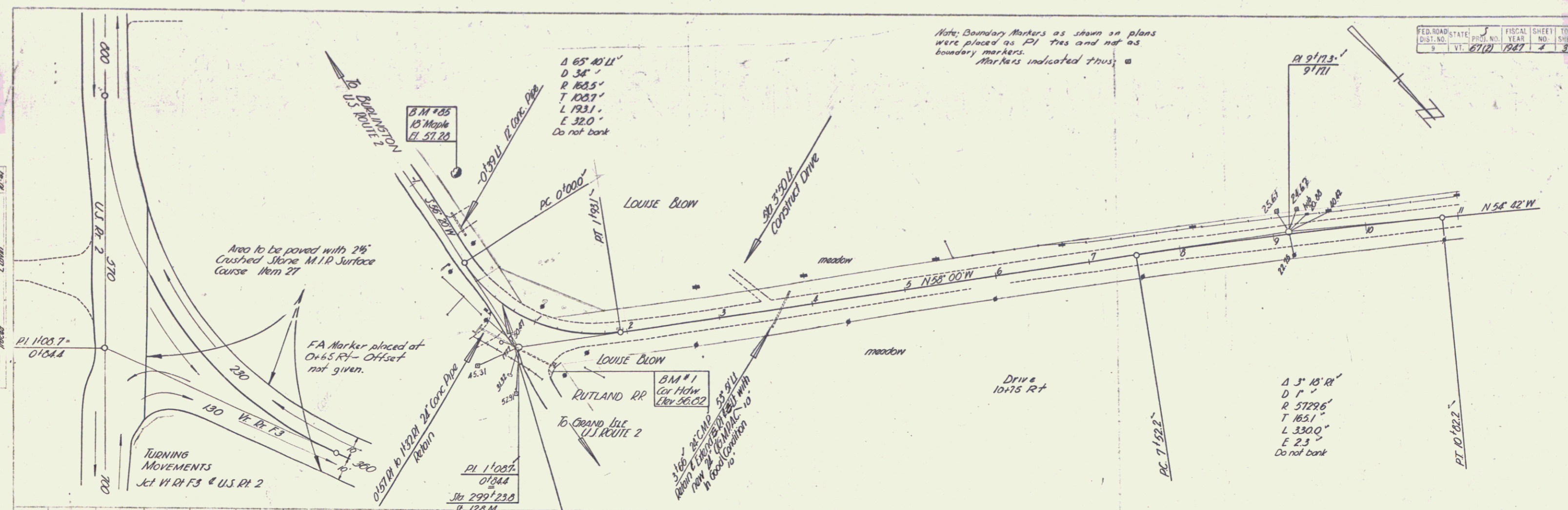
SCALES

TITLE	1" = 500'
TYPICAL	1" = 2'
PLAN	1" = 50'
PROFILE HORIZONTAL	1" = 50'
PROFILE VERTICAL	1" = 10'
CROSS SECTIONS	1" = 5'

314/00077L

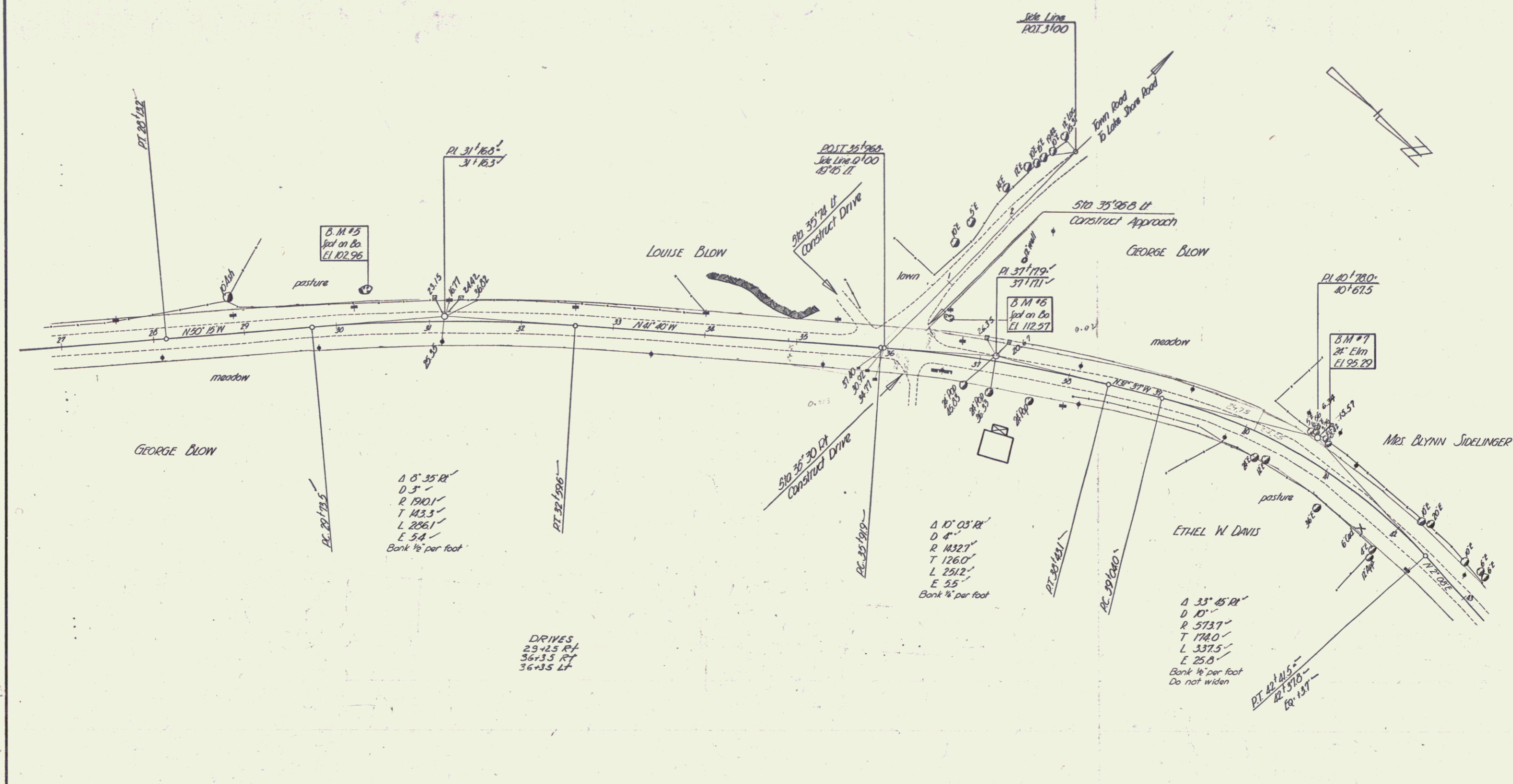
314

FED. ROAD DIST. NO.	STATE	PROJ. NO.	FISCAL YEAR	SHEET NO.	TOTAL SHEETS
9	Vt.	67(2)	1947	4	37



B.M. #25 S.I.R. 10 M. 42.5' U of Sta 271.34 Prec. Jt. 128.0 M Elev. 57.20 (42.5' U of Sta -0'84 S 67(2) Prec.)  
 B.M. #1 Jct on culvert headwall 27' R of Sta 11.30 Elev. 56.02  
 S. H. H. - GRAND ISLE S 67(2) Sheet 4 of 37 Sheets





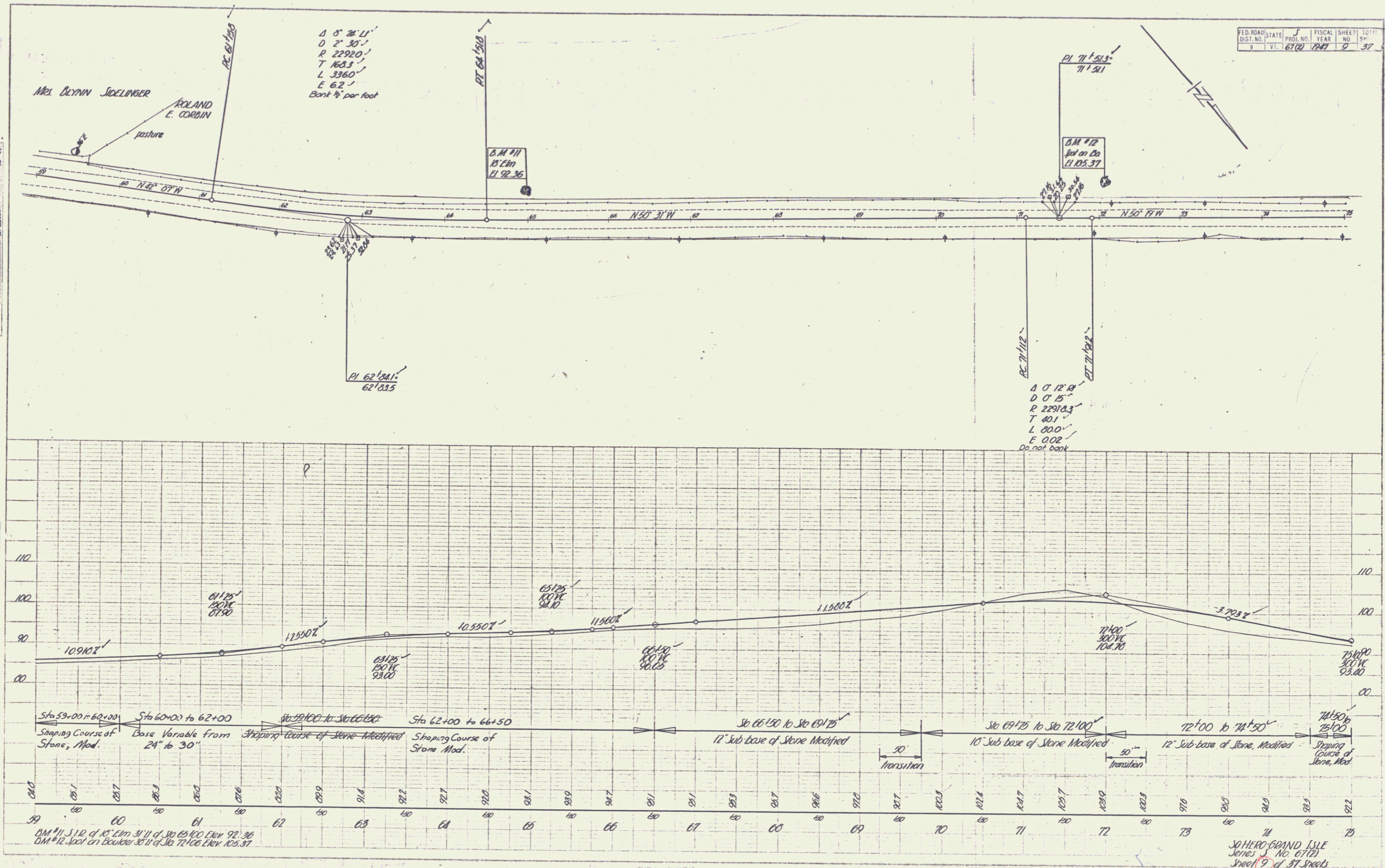
DRIVES  
 29-425 R+  
 36-435 R+  
 36-435 L+

SO HERO - GRAND ISLE  
 Surveyed by H. Kendall 8-47  
 Designed by R. Lyman 10-47  
 Traced by L. Lavin 10-47  
 Checked by  
 Series 5 No. 67(2) Filed  
 Sheet 6 of 37 Sheets



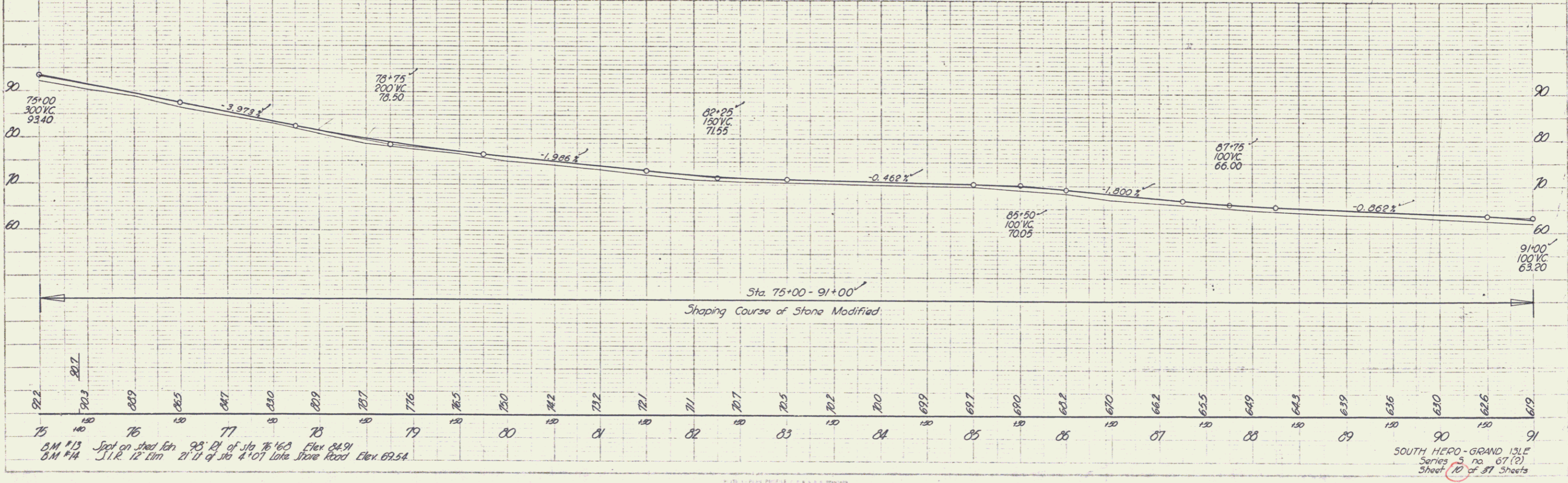
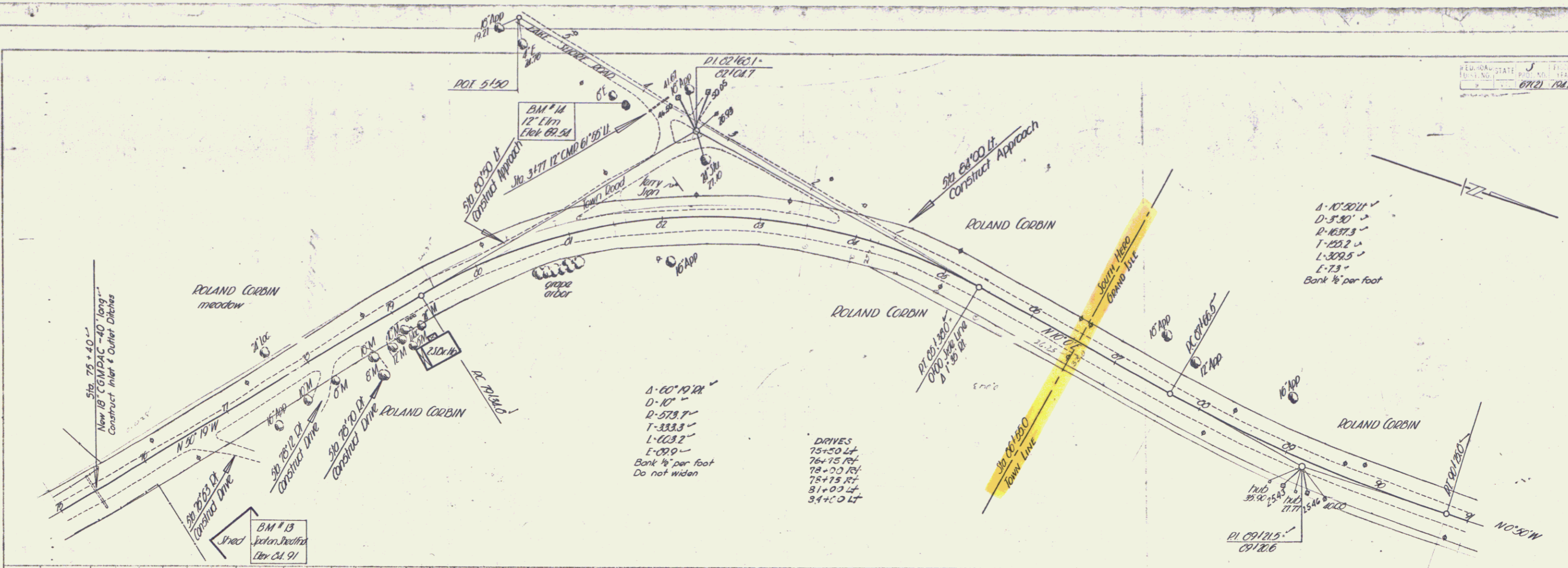
PLAN  
 DRAWN BY: J. L. Loran  
 CHECKED BY: J. L. Loran  
 DATE: 10-27-47

PROFILE  
 DRAWN BY: J. L. Loran  
 CHECKED BY: J. L. Loran  
 DATE: 10-27-47



PLAN  
 DATE 10/1/47  
 BY J. Marshall  
 CHECKED J. Marshall  
 TITLE SHEET NO. 10 OF 37

PROFILE  
 DATE 10/1/47  
 BY J. Marshall  
 CHECKED J. Marshall  
 TITLE SHEET NO. 10 OF 37



B.M. #13 Spot on shed Etn 95' E of Sta 76+60 Elev. 84.91  
 B.M. #14 S.I.R. 12' Etn 21' W of Sta 4+07 Lake Shore Road Elev. 69.54





