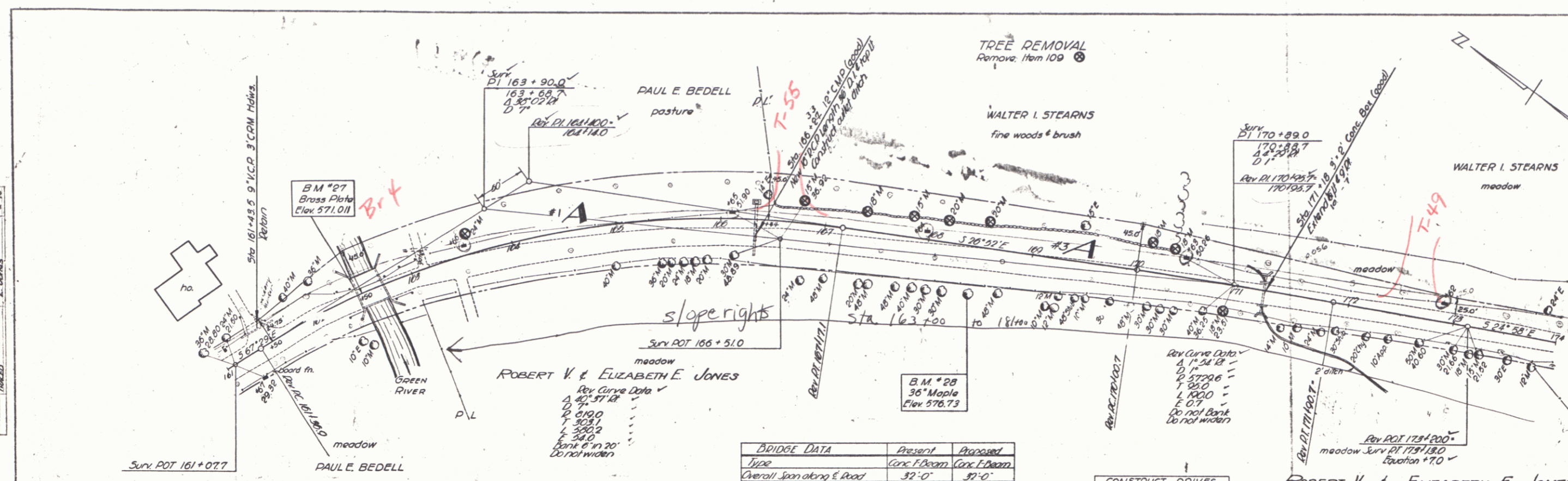


FED. ROAD DIST. NO.	STATE	PROJ. NO.	YEAR	SHEET NO.	TOTAL SHEETS
9	VT.	14177	1947	6	70

PLAN	DATE	BY	CHECKED
BRIDGE	1-28	A. L. LAMON	L. JAMES

FILE	DATE	BY	CHECKED
BRIDGE	1-28	A. L. LAMON	L. JAMES



- LIST OF SHEETS BRIDGE ONLY
- Sh 20 of 70 Details of Abutment #1
  - Sh 21 of 70 Details of Abutment #2
  - Sh 19 of 70 Details of Superstructure
  - Sh 22 of 70 5D-5C-1-3rd Cable Rail
  - Sh 23 of 70 5D-11 Dorrades Sign Lights
  - Sh 24 of 70 5D-10 5D-10 Stel Details D #3

ESTIMATED QUANTITIES BRIDGE ONLY

Item 15 Channel Excavation	20 CY
Item 16 Structure Excavation	95 CY
Item 18 Maintenance of Traffic	1 LS
Item #1A Concrete Class A	19 CY
Item #1C Concrete Class C	85 CY
Item #21 Reinforcing Steel	1047 LB
Item #5 Timber Piling	300 LF
Item #20A Cable Guard Rail	84 LF
Item #24 Preparing Superstructure for widening	14

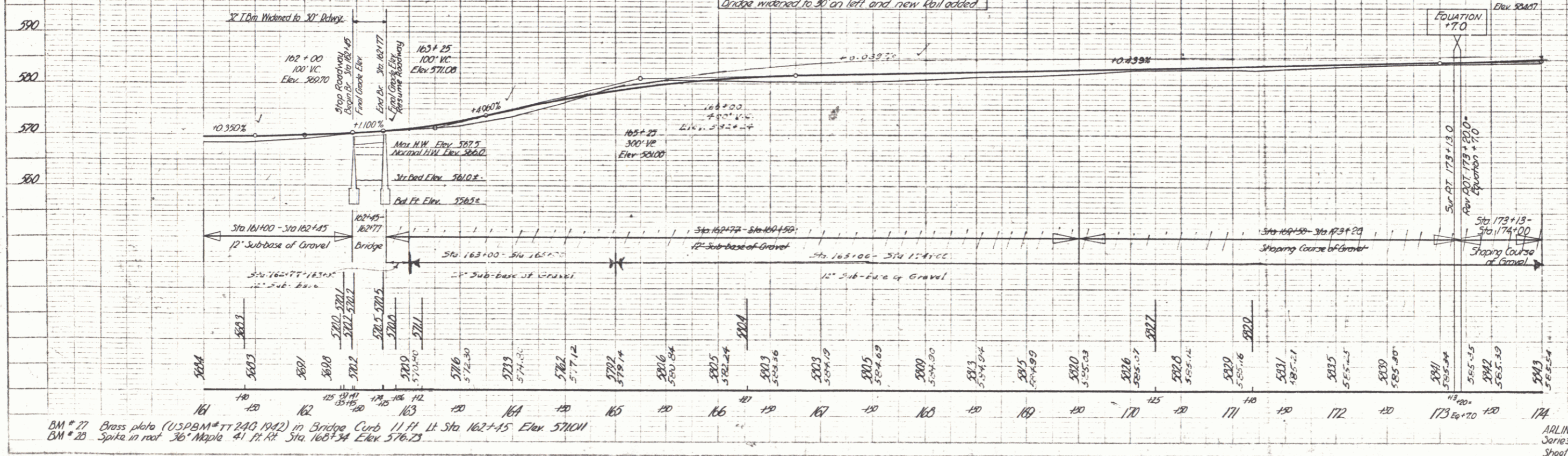
BRIDGE DATA

Type	Present	Proposed
Overall Span along E Road	32'-0"	32'-0"
Roadway width face to face Curb	20'-0"	30'-0"
Clear Span along E Road	25'-0"	25'-0"
Clear Span normal to Stream	25'-0"	25'-0"
Clear height to low bridge seat	7'-0"	7'-0"
Maximum high water Elev	567.5	567.5
Normal high water Elev	566.0	566.0
Waterway to low bridge seat	100"	100"
Normal to Max H.W. Elev	150"	150"
to Stream to Normal H.W. Elev	140"	140"
Stream Velocity	Medium	Light
Drift	Slight	Slight
Scour	Slight	Slight
Bridge widened to 30' on left and new rail added		

CONSTRUCT DRIVES

LEFT	RIGHT
161+42	163+40
163+10	

PARCEL	INSTRUMENT	DATE	GRANTOR	GRANTEE	RECORDED ARLINGTON BOOK PAGE DATE	REMARKS
#3A	W. D. O. E.	7-27-48	WALTER I. STEARNS	ST. OF VT.	27 448-49 8-11-48	
#2	W. D. O. E.	8-11-48	ROBERT V. & ELIZABETH E. JONES	ST. OF VT.	27 531-532 8-20-48	SUPPERRIGHTS



BM # 77 Brass plate (USPBM # TT 240 1942) in Bridge Curb 11 ft Lt Sta 162+15 Elev 571.01  
 BM # 20 Spike in root 36" Maple 41 ft Rt Sta 168+34 Elev 576.73

ARLINGTON  
 Jones F. No. M1 (1)  
 Sheet 6 of 70 Sheets