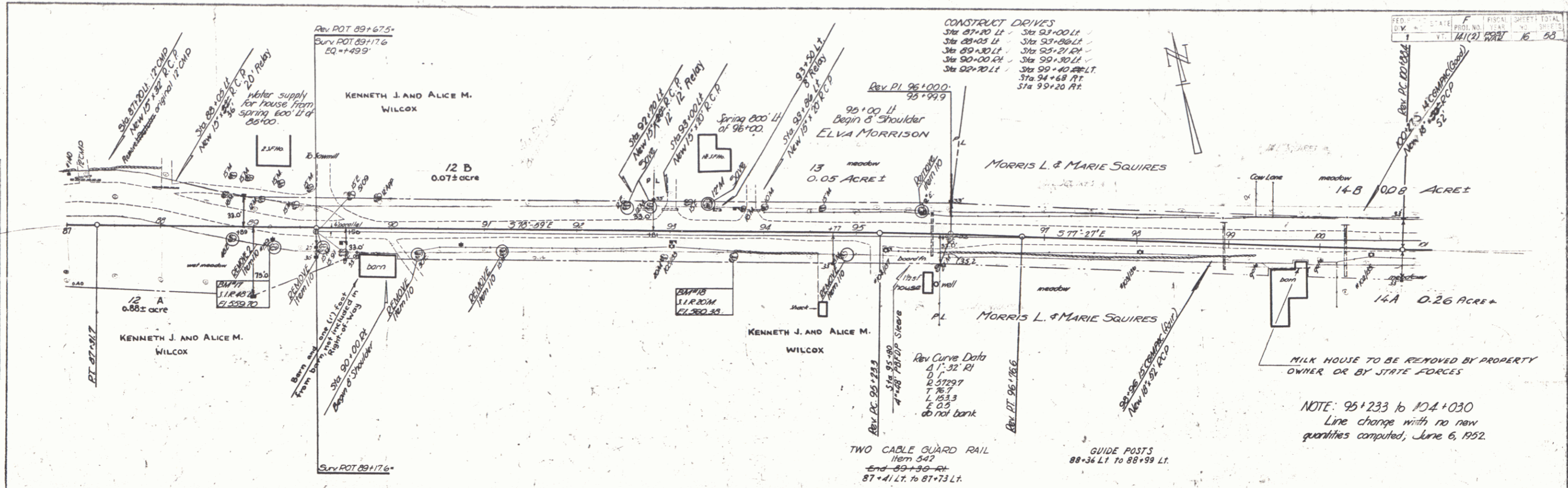


PLAN
 DATE BOOK
 ALIGNED CENTER
 11/1/52
 11/1/52



CONSTRUCT DRIVES
 Sta 87+00 LT - Sta 93+00 LT
 Sta 89+03 LT - Sta 95+00 LT
 Sta 89+30 LT - Sta 95+21 RT
 Sta 90+00 RT - Sta 99+30 LT
 Sta 92+70 LT - Sta 94+68 RT
 Sta 99+20 RT

REV. DATE
 1 11/1/52
 2 11/1/52
 3 11/1/52
 4 11/1/52
 5 11/1/52
 6 11/1/52
 7 11/1/52
 8 11/1/52
 9 11/1/52
 10 11/1/52
 11 11/1/52
 12 11/1/52
 13 11/1/52
 14 11/1/52
 15 11/1/52
 16 11/1/52
 17 11/1/52
 18 11/1/52
 19 11/1/52
 20 11/1/52

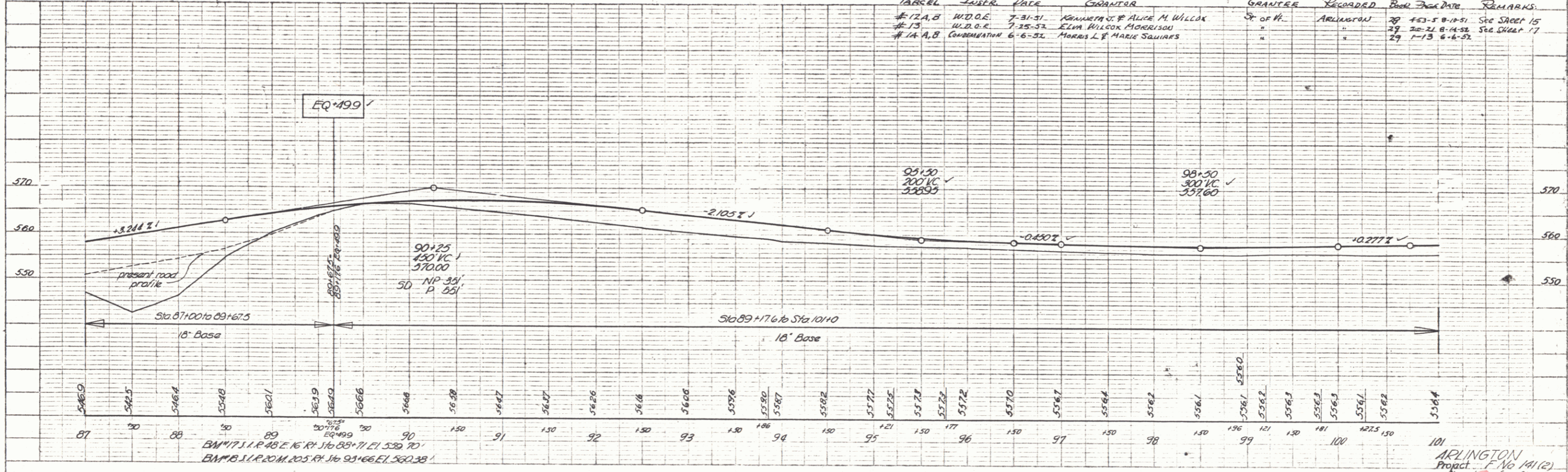
MILK HOUSE TO BE REMOVED BY PROPERTY OWNER OR BY STATE FORCES

NOTE: 95+233 to 104+030
 Line change with no new quantities computed, June 6, 1952.

TWO CABLE GUARD RAIL
 Item 542
 end 89+30 RT
 87+41 LT to 87+73 LT

Parcel	Instr.	Date	Grantor	Grantee	Recorded	Book	Page	Remarks
#12 A, B	W.D.O.E.	7-31-51	Kenneth J. & Alice M. Wilcox	"	29	43-5	8-10-51	See Sheet 15
#13	W.D.O.E.	7-25-52	Elva Wilcox Morrison	"	29	20-21	8-14-52	See Sheet 17
#14 A, B	COORDINATION	6-6-52	Morris L. & Marie Squires	"	29	1-13	6-6-52	

PROFILE
 DATE BOOK
 11/1/52
 11/1/52



ARLINGTON
 Project No. 141(2)
 Sheet 100 of 100

PLATE 1-11-52
 11/1/52