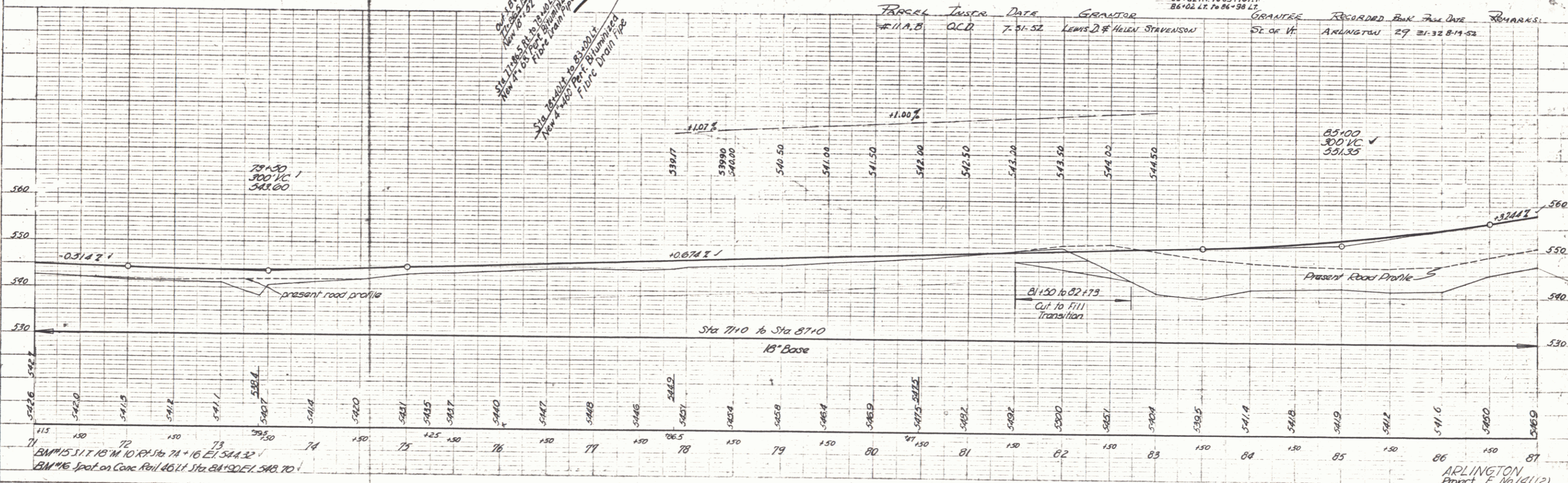
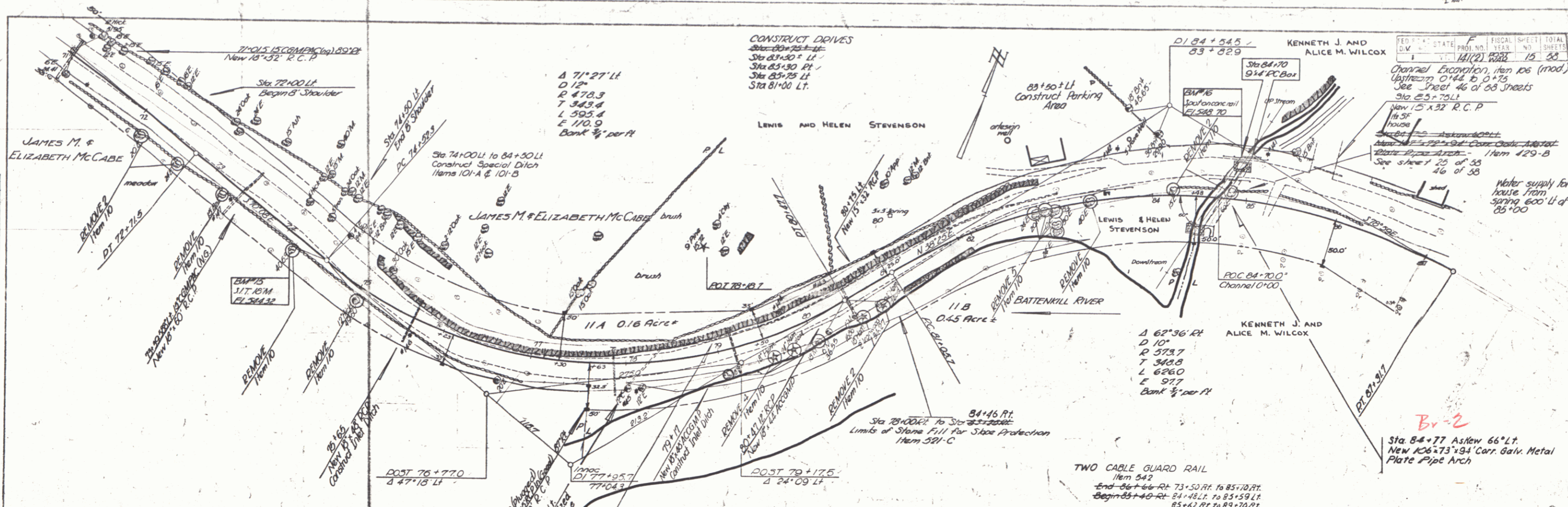


PLAN	DATE	BY
REVISED	11/15/10	ALW
NO. 1		
NO. 2		
NO. 3		
NO. 4		
NO. 5		
NO. 6		
NO. 7		
NO. 8		
NO. 9		
NO. 10		

PROJECT	NO.
10-10	10-10
10-11	10-11
10-12	10-12
10-13	10-13
10-14	10-14
10-15	10-15
10-16	10-16
10-17	10-17
10-18	10-18
10-19	10-19
10-20	10-20



STATION	ELEVATION	REMARKS
70+00	542.70	BM 15 spot on Conc. Rail 46.11 Sta. 84+90 ELEV. 542.70
71+00	543.17	
72+00	543.50	
73+00	543.80	
74+00	544.10	
75+00	544.40	
76+00	544.70	
77+00	545.00	
78+00	545.30	
79+00	545.60	
80+00	545.90	
81+00	546.20	
82+00	546.50	
83+00	546.80	
84+00	547.10	
85+00	547.40	
86+00	547.70	
87+00	548.00	

FISCAL SHEET TOTAL
 PROJECT NO. 10-10
 SHEET NO. 15 OF 38
 Channel Excavation, item 105 (mod.)
 Upstream 0+44 to 0+75
 See Sheet 46 of 88 Sheets
 Sta. 83+70 LT
 View 15' x 32' R.C.P.
 1/4" = 3'

TWO CABLE GUARD RAIL
 Item 542
 End 86+66 RT 73+50 RT to 85+10 RT
 Begin 85+45 RT 84+48 LT to 85+59 LT
 85+62 RT to 85+70 RT
 86+02 LT to 86+38 LT

Sta. 84+77 Askew 66° LT
 New 106" x 73" x 94" Carr. Galv. Metal
 Plate Pipe Arch

ARLINGTON
 Project No 10-10
 Sheet 15 of 38