

INDEX OF SHEETS

1	TITLE PAGE
2	TYPICAL CROSS SECTION OF IMPROVEMENT - SINGLE TACK COAT OF REFINED TAR AND BLADE MIX
3-4	QUANTITY AND ITEMS SHEETS - PEA STONE SEAL WITH CUTBACK ASPHALT, ITEM 317
5-6	EARTHWORK SHEETS
7-10	PLAN AND PROFILE SHEETS
11	ROADWAY STANDARD RS 56-1 (BANKING TABLES)
12	ROADWAY STANDARD RS 56-3 (MARKERS)
13	ROADWAY STANDARD RS 56-4 (DRAINAGE)
14	ROADWAY STANDARD RS 56-6 (TYPICAL SLOPE GRADING)
15	ROADWAY STANDARD RS 56-11 (THREE CABLE GUARD RAIL WITH STEEL POSTS)
16	ROADWAY STANDARD RS 56-12 (BARRICADES, SIGNS AND LIGHTS)
17	ROADWAY STANDARD RS 56-14 (DROP INLETS OR CATCH BASINS)
17-A	ROADWAY STANDARD RS 56-9 (DRILLING & BLASTING OF SOLID ROCK SUB-GRADE)
18-28	CROSS SECTIONS

**STATE OF VERMONT
DEPARTMENT OF HIGHWAYS**

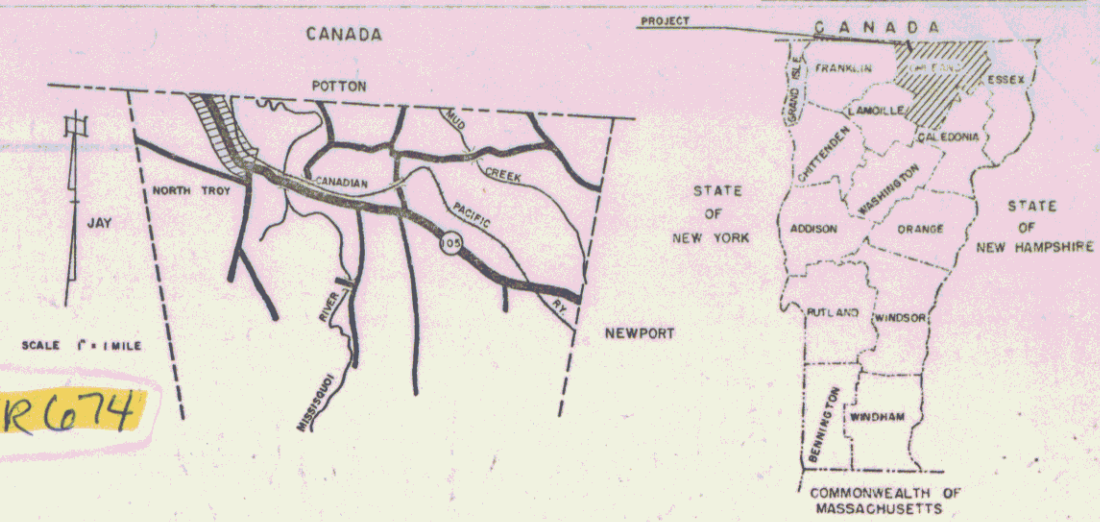
PROPOSED IMPROVEMENT

FEDERAL AID PROJECT

TOWN OF TROY

COUNTY OF ORLEANS
NEWPORT, VT. - HIGHWATER, P.Q. ROAD

VERMONT ROUTE 243



PROJECT NAME & NUMBER
TROY F 71(6)

TYPE
SINGLE TACK COAT OF REFINED TAR AND BLADE MIX
PEA STONE SEAL WITH CUTBACK ASPHALT

SURFACE AREA
11,159 S.Y.

RECORD PLANS

MATERIALS

GRAVEL - PERCY, COLLINS & HILLIKER PITS - TROY
MACADAM BASE COURSE - CALKINS, COVENTRY
PEA STONE - VERMONT ASBESTOS MINES, LOWELL
ASPHALT - BARRETT CO. WALDEN, MASS.
TAR -

CONTRACTOR - GOSS DOWNING CONST. CORP.
RESIDENT ENGINEER - N.E. MURRAY
RECORD PLANS - N.E. MURRAY

CONTRACT DATED - FEB 21, 1958
CONTRACT STARTED - MAR 3, 1958
CONTRACT COMPLETED - SEPT. 16, 1958
CONTRACT ACCEPTED - SEPT 16, 1958

BEGINNING AT A POINT 0.864 MI. SOUTHERLY FROM THE UNITED STATES-CANADA BORDER LINE
ON VERMONT ROUTE 105 AND EXTENDING NORTHERLY 4565 FEET.

LENGTH OF PROJECT 4,565 FT. = 0.864 MILE

ADT (1955)	390
ADT (1975)	800
DHV	130
D	65%
V	7 1/2%

(To Be Returned to H.O. W. Division)

Form of AT 105-A

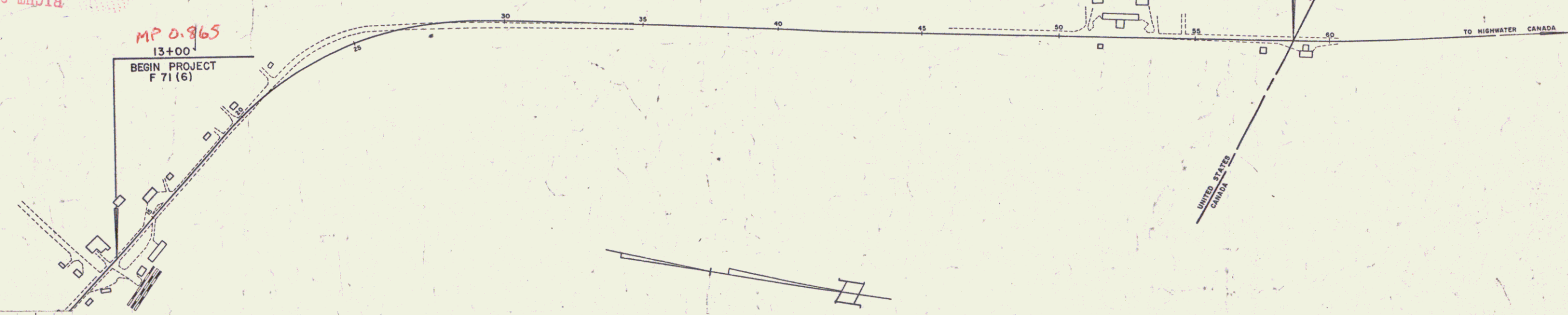
PERPETUAL

RIGHT-OF-WAY DIVISION

MP 0.865

13+00

BEGIN PROJECT F 71(6)



COUNTY TROY

TOWN LYNDEN

SECTION 0864

PROJECT F 71(6)

TYPE SINGLE TACK COAT OF REFINED TAR AND BLADE MIX
PEA STONE SEAL WITH CUTBACK ASPHALT

CONTRACTOR GOSS DOWNING CONST. CORP.

LOCATION BEGINNING AT A POINT 0.864 MI. SOUTHERLY FROM THE UNITED STATES-CANADA BORDER LINE ON VT. ROUTE 105 AND EXTENDING NORTHERLY 0.864 MI.

CONTRACTOR GOSS DOWNING CONST. CORP.
RES. ENGR. N.E. MURRAY
COMPLETED SEPT. 16, 1958

GROUND ELEVATION

GRADE ELEVATION

CURVE DATA

DEFLECTION OF ANGLE

DEGREE OF CURVE R

RADIUS OF CURVE T

TANGENT DISTANCE L

LENGTH OF CURVE E

EXTERNAL DISTANCE P.I.

POINT OF INTERSECTION P.C.

POINT OF CURVE P.T.

POINT OF TANGENT P.O.T.

POINT ON TANGENT P.O.T.

POINT ON SUB-TANGENT P.O.T.

SCALES

TITLE	1" = 200'
TYPICAL	1" = 2'-6"
PLAN	1" = 50'
PROFILE HORIZONTAL	1" = 50'
PROFILE VERTICAL	1" = 10'
CROSS-SECTIONS	1" = 5'

THESE PLANS ARE SUBJECT TO SUCH REVISIONS AS MAY BE REQUIRED BY THE BUREAU OF PUBLIC ROADS OR THE COMMISSIONER OF HIGHWAYS.

CONSTRUCTION IS TO BE CARRIED ON IN ACCORDANCE WITH THE PLANS AND THE STANDARD SPECIFICATIONS FOR HIGHWAY AND BRIDGE CONSTRUCTION OF JANUARY 1956 SUBMITTED TO THE BUREAU OF PUBLIC ROADS AS APPROVED JULY 5, 1956, INCLUDING ALL SUBSEQUENT APPROVED REVISIONS AND SUCH REVISED SPECIFICATIONS AND SPECIAL PROVISIONS AS ARE SUBMITTED WITH THE PLANS.

NOTE: ANY FURTHER INFORMATION CONCERNING FINAL QUANTITIES, ACCOUNTS OR OTHER DETAILS RELATIVE TO THIS PROJECT MAY BE FOUND IN EITHER THE FIELD BOOKS OR THE ESTIMATE FILE.

APPROVED SECONDARY ENGINEER DATE	APPROVED CONSTRUCTION ENGINEER DATE 1-21-1958	APPROVED BRIDGE ENGINEER DATE	APPROVED DISTRICT ENGINEER DATE 4/21/58	APPROVED HIGHWAY ENGINEER DATE 1/27/58	APPROVED CHIEF ENGINEER DATE JAN. 27, 1958
--	---	-------------------------------------	---	--	--

DEPARTMENT OF COMMERCE
BUREAU OF PUBLIC ROADS

APPROVED

DIVISION ENGINEER DATE

PROJECT F NO. 71(6)

SHEET 1 OF 28 SHEETS

VT 243

ml 3/1/58 (questions)

Item 548B Steel Guide Posts
L.T.
23+38 4

CLYDE & MARY A. AUSTIN

Plank Guard Rail
w/Preservative Treatment
23+0 16'Lt.
25+23 10'Lt.

○ Indicates Remove Item 110

Excavation and Removal of Road
Surface of Discontinued Highway
Lt 22+00 - 26+00

BEGIN 3 CABLE GUARD
RAIL WITH STEEL POSTS
RT.
19+00 - 19+42'
21+00 - 23+34'
27+30 - 35+00

Construct Drives
L.T.
19+73
21+63
21+60
21+0
23+25
34+86

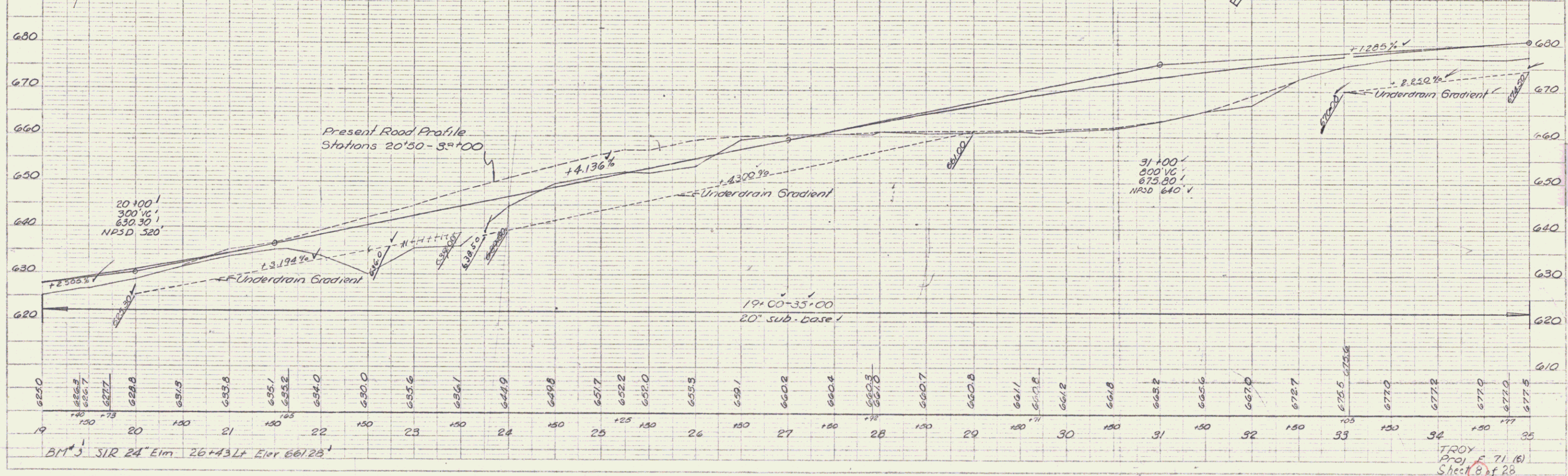
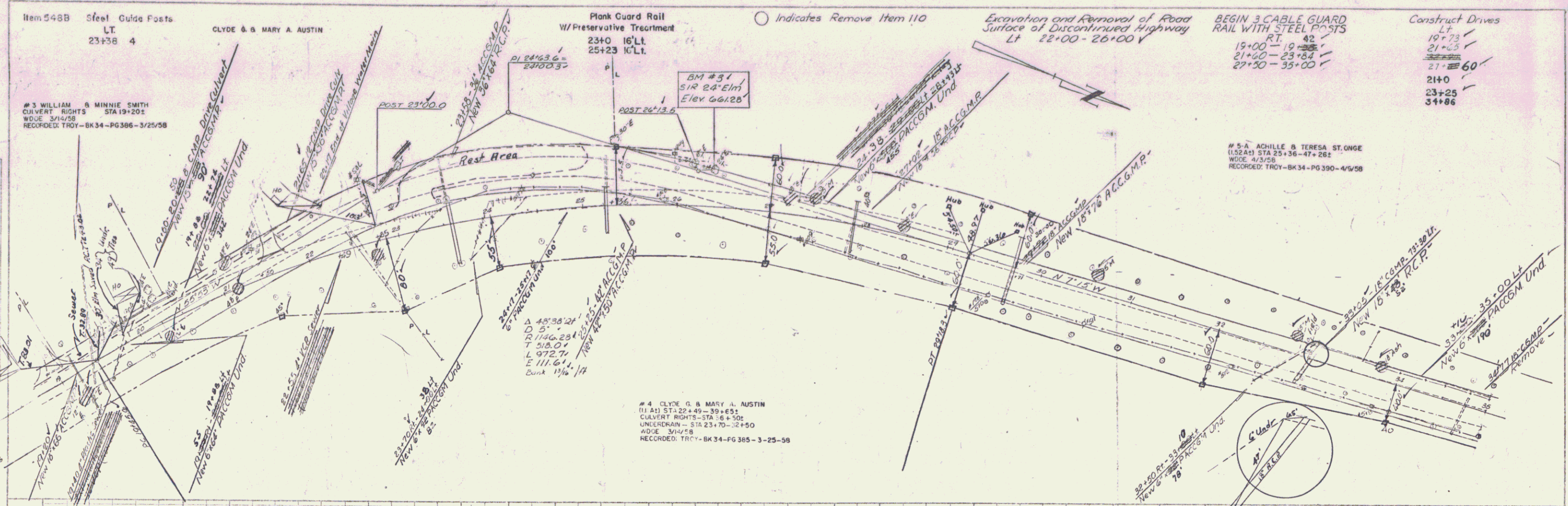
#3 WILLIAM & MINNIE SMITH
CULVERT RIGHTS STA 19+201
WIDE 3/4/58
RECORDED: TROY-BK 34-PG 366-3/25/58

#5-A ACHILLE & TERESA ST. ONGE
(1.52A) STA 25+36-47+281
WIDE 4/5/58
RECORDED: TROY-BK 34-PG 390-4/5/58

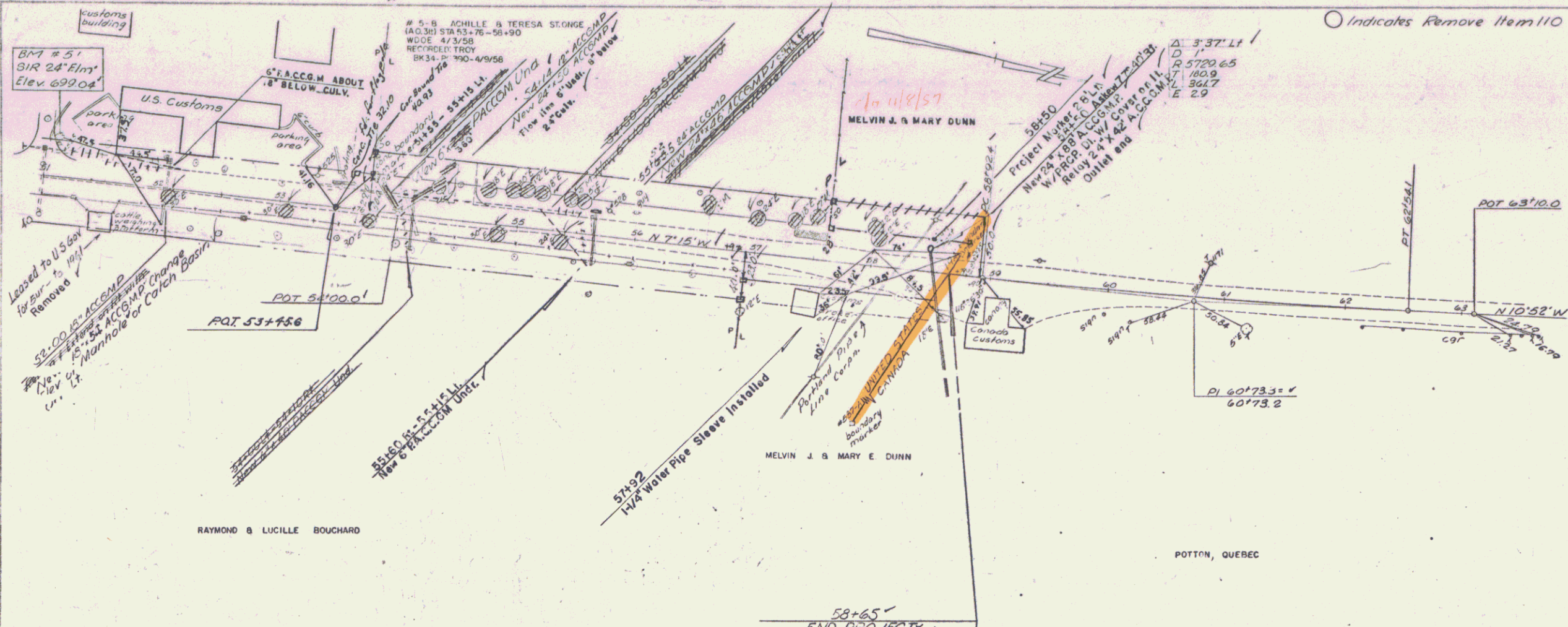
#4 CLYDE G. & MARY A. AUSTIN
(1.52A) STA 22+49-39+652
CULVERT RIGHTS STA 18+102
UNDERDRAIN - STA 23+70-32+50
WIDE 3/14/58
RECORDED: TROY-BK 34-PG 365-3-25-58

PLAN
DATE
SCALE
PROJECT
SHEET NO.

PROFILE
DATE
SCALE
PROJECT
SHEET NO.



TROY
Proj. 71.10
Sheet 8 of 28



○ Indicates Remove Item 110

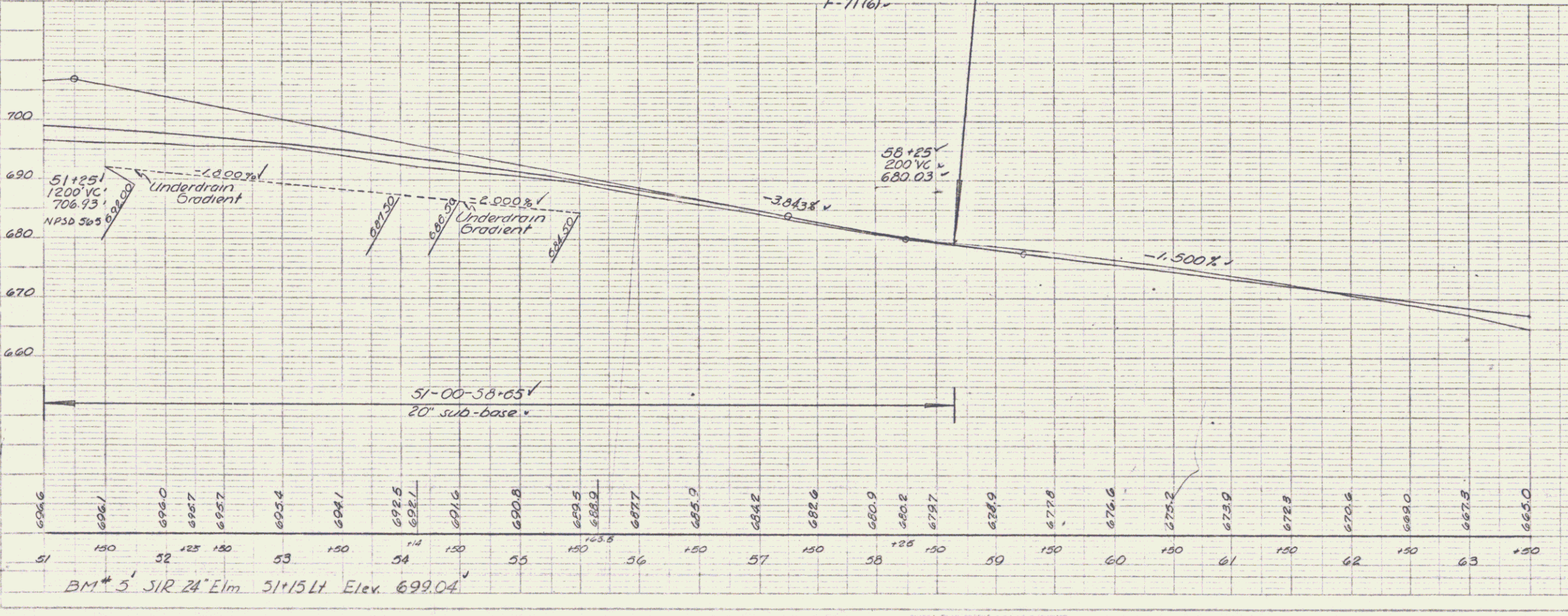
BEGIN 3 CABLE GUARD RAIL WITH STEEL POSTS Rt. 51+00 - 51+64

Construct Drive Lt. Rt.

51+00	51+00	57+25
51+50	53+00	57+25
54+50	54+50	56+75
55+60	55+60	
58+65	58+65	

PLAN
DATE BOOK
DRAWN BY
CHECKED BY

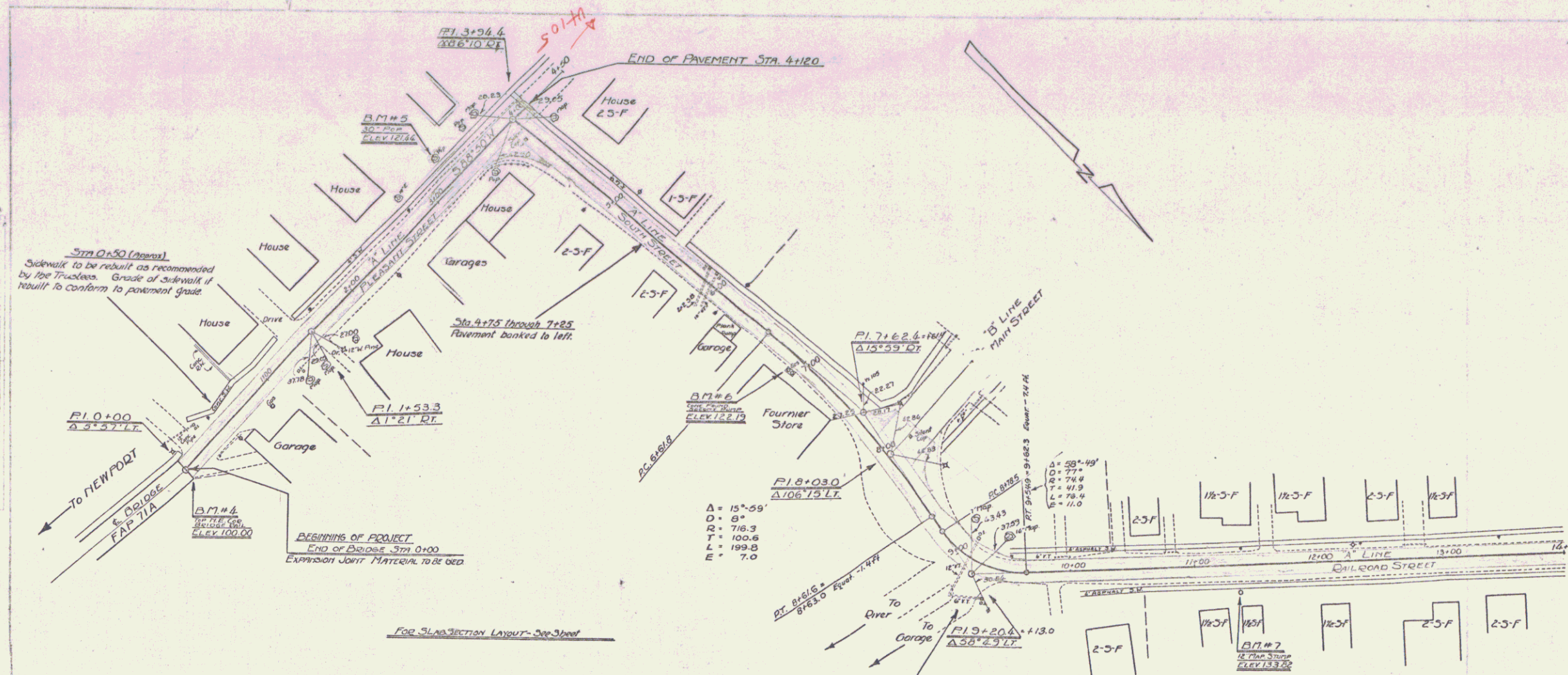
PROFILE
DATE BOOK
DRAWN BY
CHECKED BY



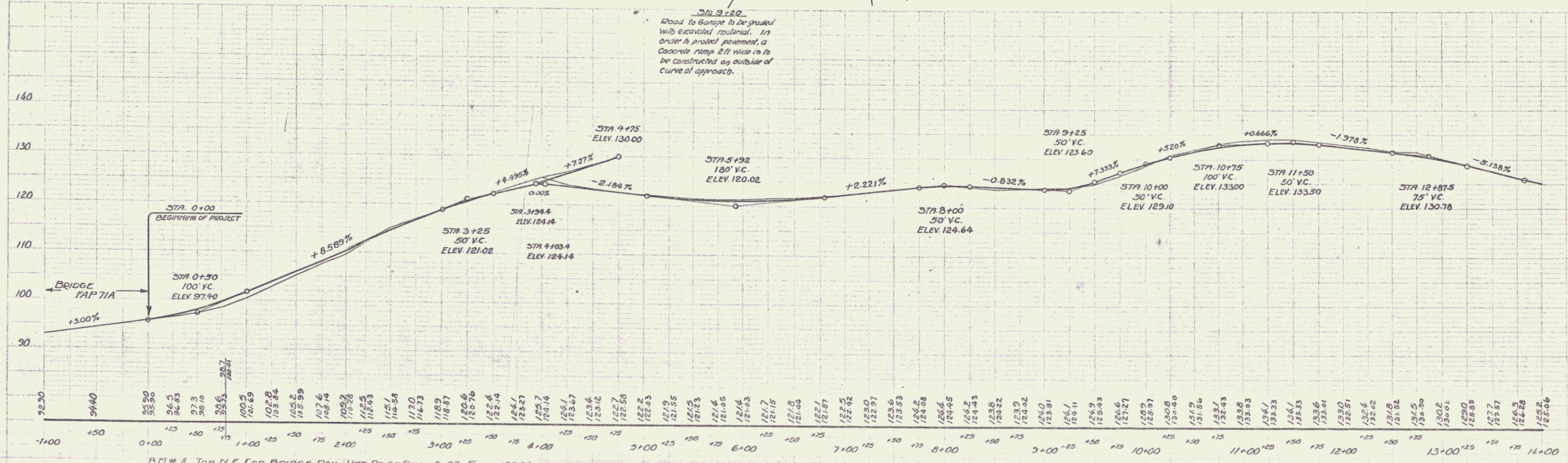
TROY
Proj. No. 71(6)
Sheet 10 of 28

FILE
 A.A. Doe 6/23
 N.L. Stevens 6/23

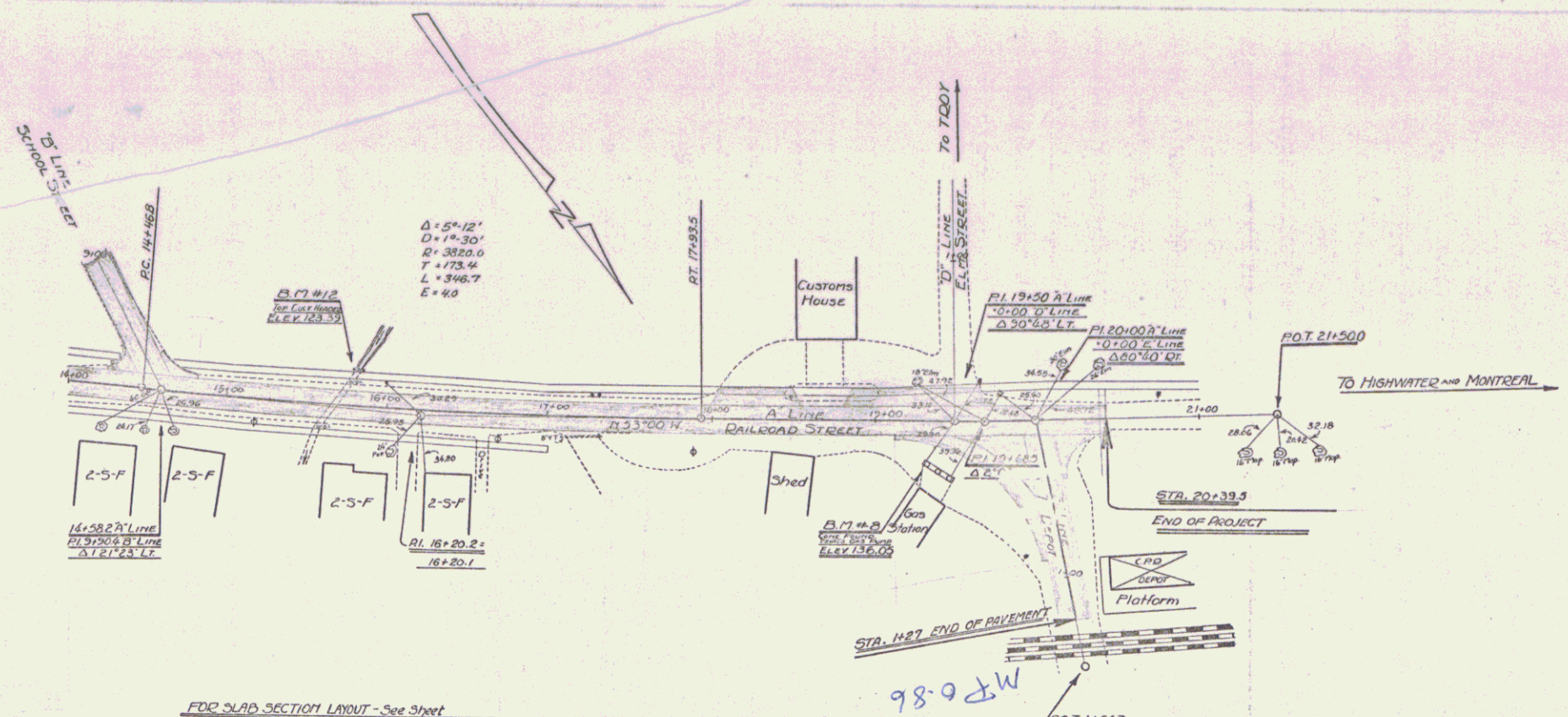
FILE
 A.A. Doe 6/23
 N.L. Stevens 6/23



GENERAL NOTE
 These plans do not contemplate any change of the drainage system now in existence. Excavated material is to be disposed of in such locations as the project contemplates and as required by the Trustees.

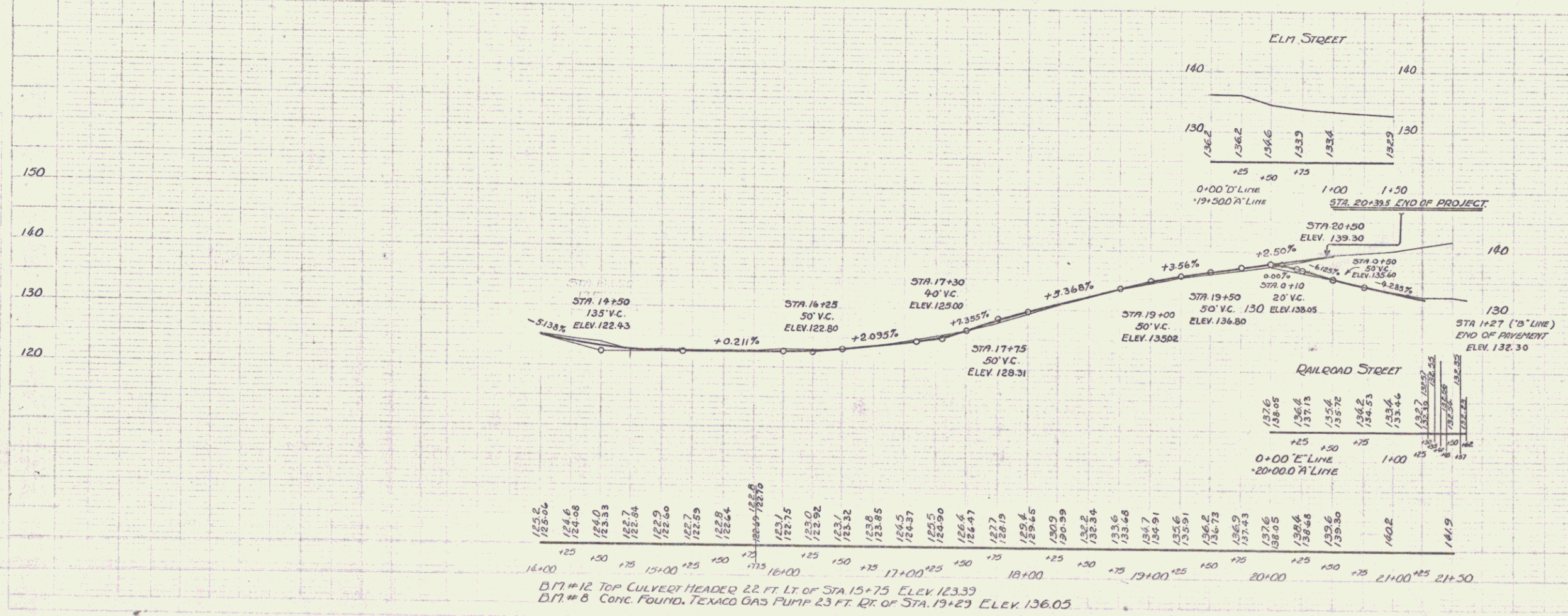


W.P. 0.86-1.181
 HIGHWAY DIVISION
 TOWN OF
 PERPETUAL
 243
 (To Be Returned To R.O.W. Division)



FOR SLAB SECTION LAYOUT - See Sheet

A.A. Cox
 R.L. Stevens
 H.L. Stevens
 6/29
 6/29

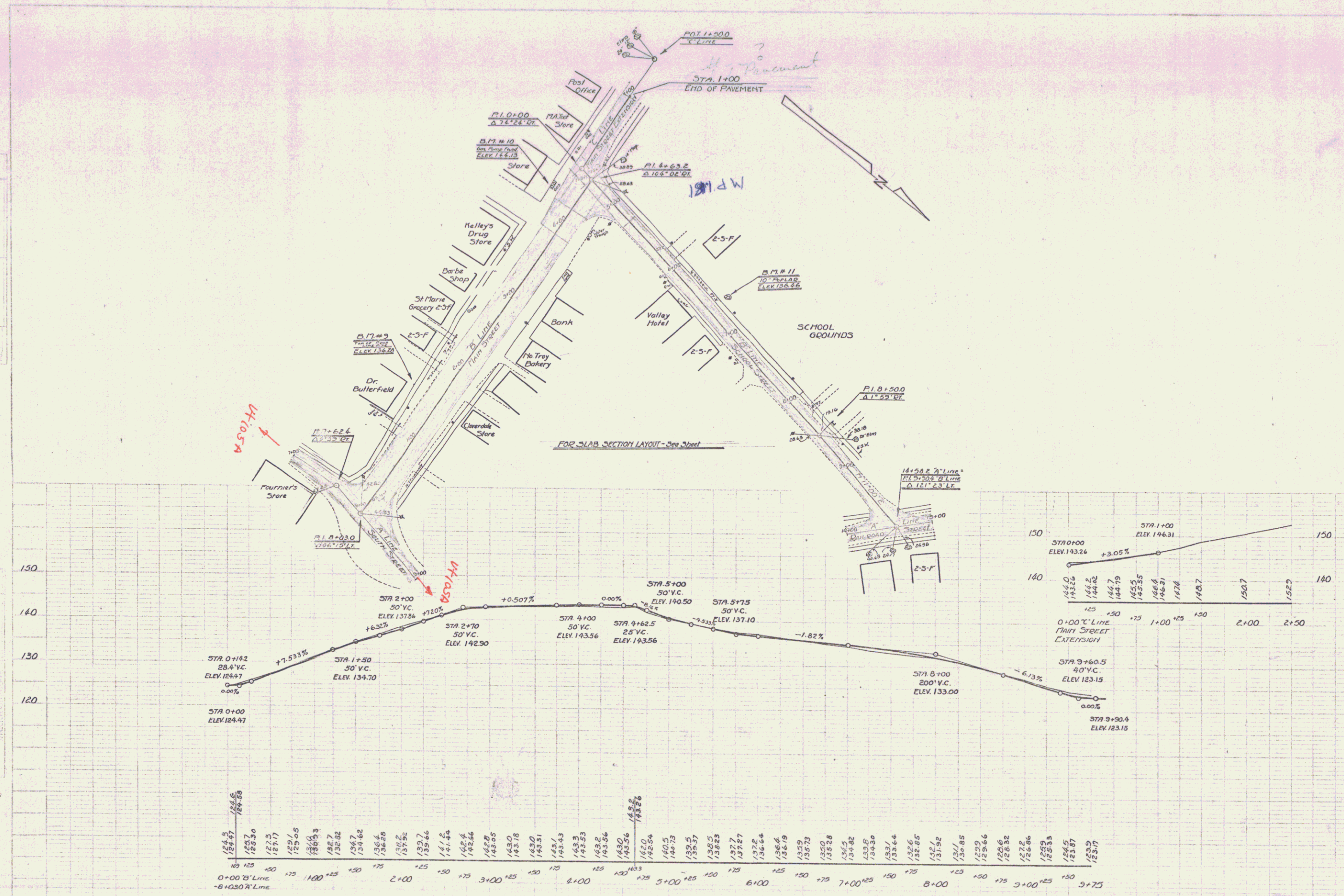


D17#12 TOP CULVERT HEADER 22 FT LT OF STA 15+75 ELEV 123.33
 D17#8 CONC. FOUND. TEXACO GAS PUMP 23 FT. RT. OF STA. 19+29 ELEV. 136.05

VILLAGE OF NORTH TOWN SHEET 6 OF 13

A.A. Doe
 P.L. SHAWNS
 4/73

A.A. Doe
 P.L. SHAWNS
 4/73



B17#9 TOP OF PROPERTY LINE PIPE 34 FT. LT. OF STA 1+55 ELEV 136.28
 D17#10 GAS PUMP FOUNDATION 33 FT. LT. OF STA 4+30 ELEV 144.13
 B17#11 SAME IN 10' POPULAR 23 FT. LT. OF STA 6+63 ELEV 136.46

VILLAGE OF
 North Troy
 SHEET 5 OF 13