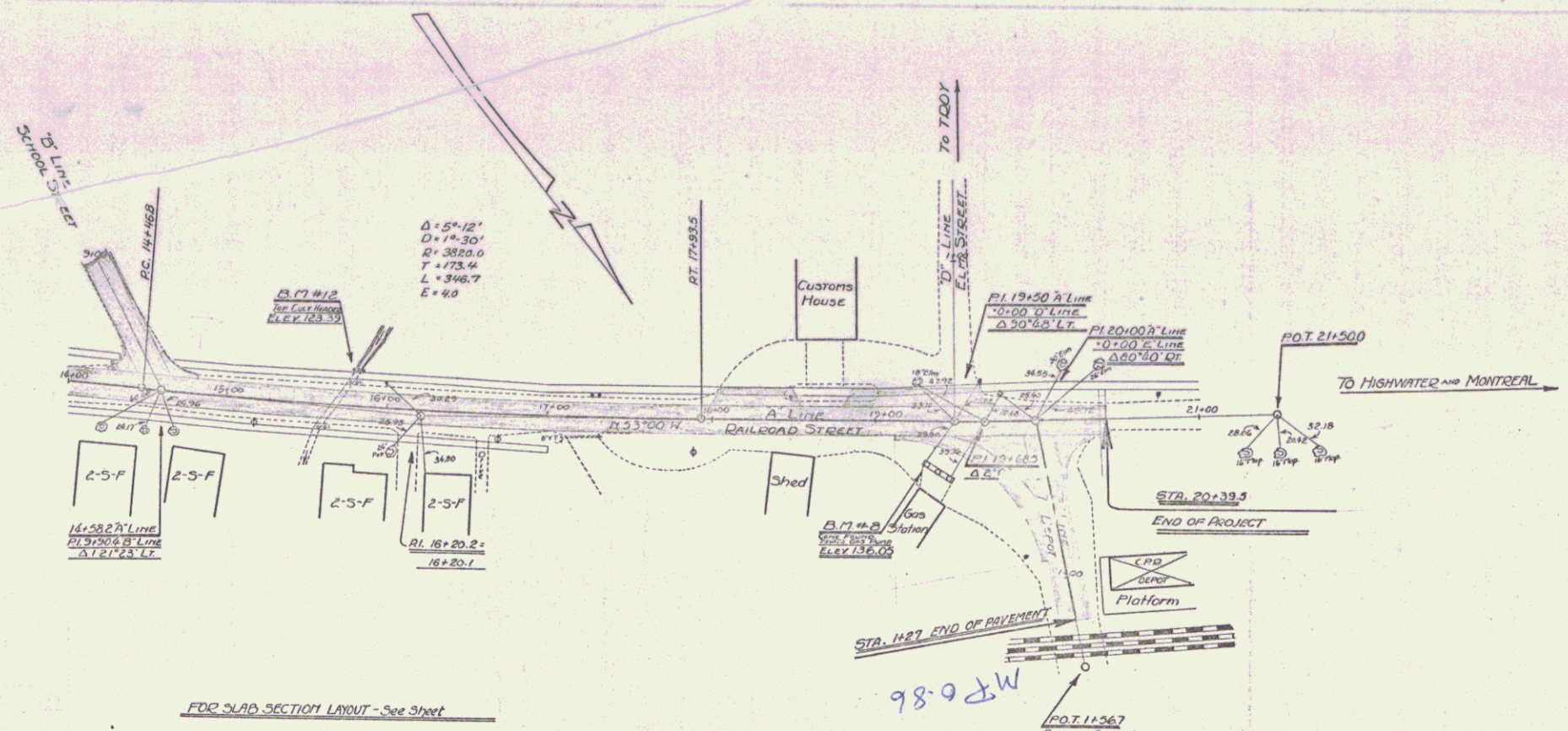
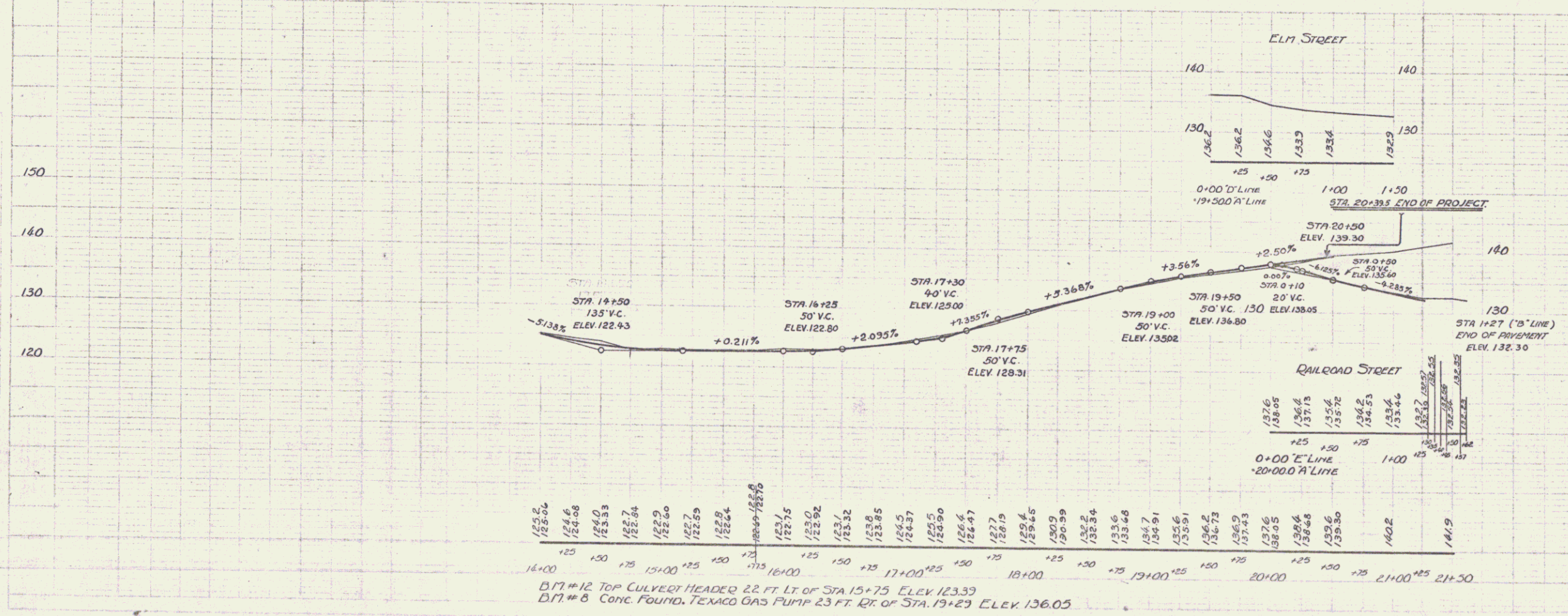


(To Be Returned To R.O.W. Division)
 Town of Utica 243
 PERPETUAL
 TOWN R.I.E.
 HIGHWAY DIVISION
 T.O.
 W.P. 0.86-1.181



FOR SLAB SECTION LAYOUT - See Sheet

A.A. Cox 6/29
 A.L. Stevens 6/29
 H.L. Stevens 6/29



D17#12 TOP CULVERT HEADER 22 FT LT OF STA 15+75 ELEV 123.33
 D17#8 CONC. FOUND. TEXACO GAS PUMP 23 FT. RT. OF STA. 19+29 ELEV. 136.05

VILLAGE OF NORTH TROY SHEET 6 OF 13