

Item 548B Steel Guide Posts
L.T.
23+38 4

CLYDE & MARY A. AUSTIN

Plank Guard Rail
w/Preservative Treatment
23+0 16'Lt.
25+23 10'Lt.

○ Indicates Remove Item 110

Excavation and Removal of Road
Surface of Discontinued Highway
Lt 22+00 - 26+00

BEGIN 3 CABLE GUARD
RAIL WITH STEEL POSTS
RT.
19+00 - 19+42'
21+00 - 23+34'
27+30 - 35+00

Construct Drives
LT.
19+73
21+43
21+60
21+0
23+25
34+86

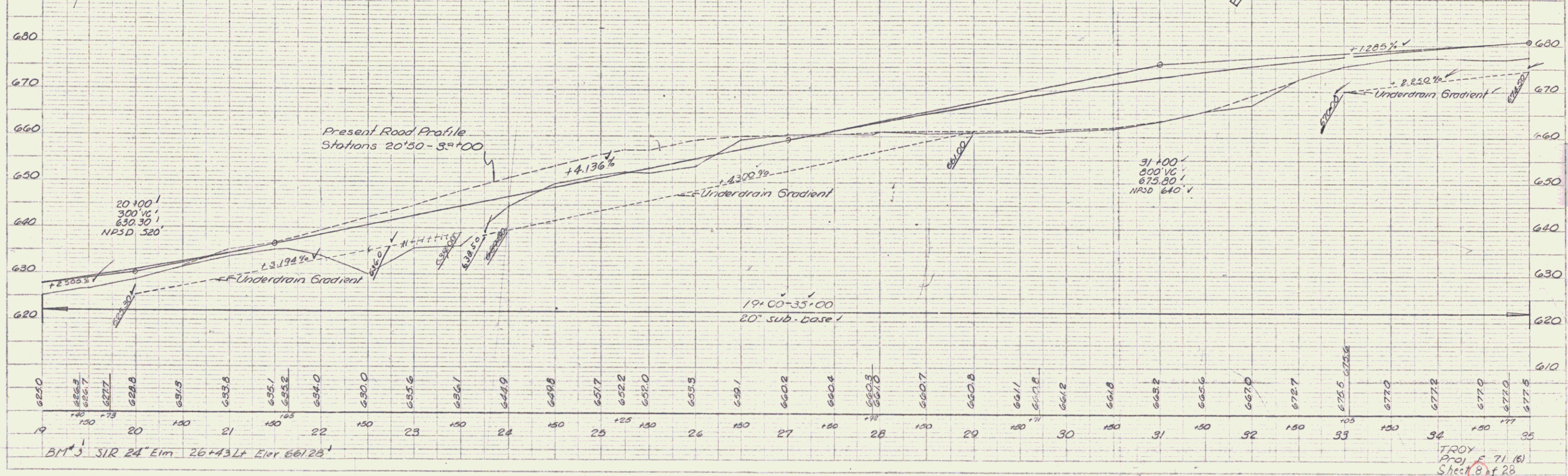
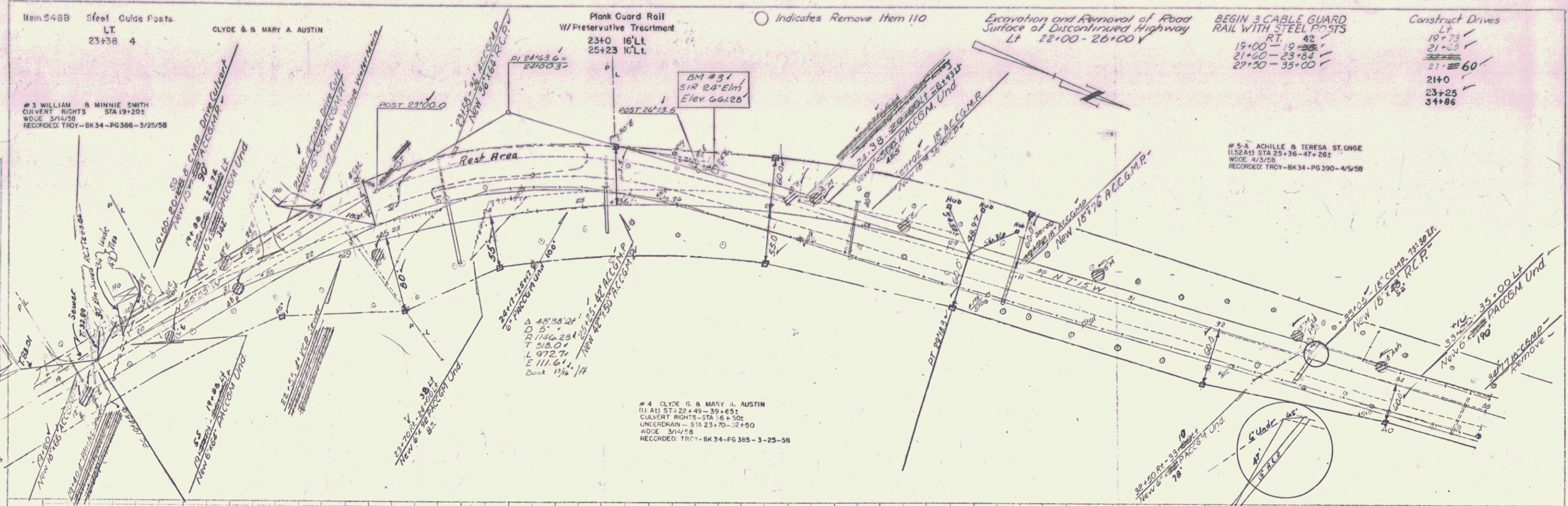
#3 WILLIAM & MINNIE SMITH
CULVERT RIGHTS STA 19+201
WIDE 3/4/58
RECORDED: TROY-BK34-PG366-3/25/58

#5-A ACHILLE & TERESA ST. ONGE
(1.52A) STA 25+36-47+281
WIDE 4/5/58
RECORDED: TROY-BK34-PG390-4/5/58

#4 CLYDE G. & MARY A. AUSTIN
(1.52A) STA 22+49-39+652
CULVERT RIGHTS STA 18+102
UNDERDRAIN - STA 23+70-32+50
WIDE 3/4/58
RECORDED: TROY-BK34-PG365-3-25-58

PLAN
DATE
SCALE
BY
CHECKED
APPROVED

PROFILE
DATE
SCALE
BY
CHECKED
APPROVED



TROY
Proj. 71.10
Sheet 8 of 28