

INDEX OF SHEETS

1.	Title Sheet	
2.	Quantity Sheet	
3.	Drainage Sheets	
4-5.	Earthworks	
6-9.	Layouts	
10-21.	A-61 Solid Rock Excavation	4/9/71
22.	B-1 Banking Tables	7/17/67
23.	B-5 Typical Slope Grading	3/10/65
24.	B-10 Embankment on a Slope	3/10/65
25.	B-11 Use of Underdrain w/Shattered Rock	3/10/65
26.	B-12 Side Road Intersection showing De-pressed Ramp	3/10/65
27.	B-13 Drive Intersection (Depressed and Crest Ramp)	3/10/65
28.	D-1 Drop Inlet-Type I-8 Item 530-B	8/1/65
29.	D-2 C.R.M. HEADWALL UNDERDRAIN	3/3/71
30.	D-3 Treated Gutters	7/19/67
31.	D-4 Underdrain Flushing Basins	12/2/68
32.	D-6 Reinf. Conc. Drop Inlet w/grate	12/23/68
33.	D-8 Reinf. Conc. Drop Inlet w/Precast Cover	3/10/65
34.	D-11 Cast Iron Grate - Type A	12/2/68
35.	D-16 Cast Iron Grate - Type B	10/28/69
36.	E-32 Road Const. Approach Signs	5/1/71
37.	E-34 On-Project Const. Signs	5/1/71
38.	G-2a Two Cable Guard Rail	10/24/69
39.	G-4 Wood Marker and Guide Posts	12/30/65
40.	J-1 Projection Banding Markers	3/10/65
41-71.	Cross Sections of Improvement	
72-73.	Approach Cross Sections	
74-75.	Banking Transition Diagrams	

STATE OF VERMONT
DEPARTMENT OF HIGHWAYS
PROPOSED IMPROVEMENT

TOWNS OF SHELDON AND FRANKLIN
COUNTY OF FRANKLIN
STATE AID ROUTES #7 AND #4
HAMMOND ROAD *Pin# 99R672*

RECORD PLANS
PAVEMENT TYPE & AREA
TACK COAT-TYPE V 36,839 S.Y.
MATERIALS

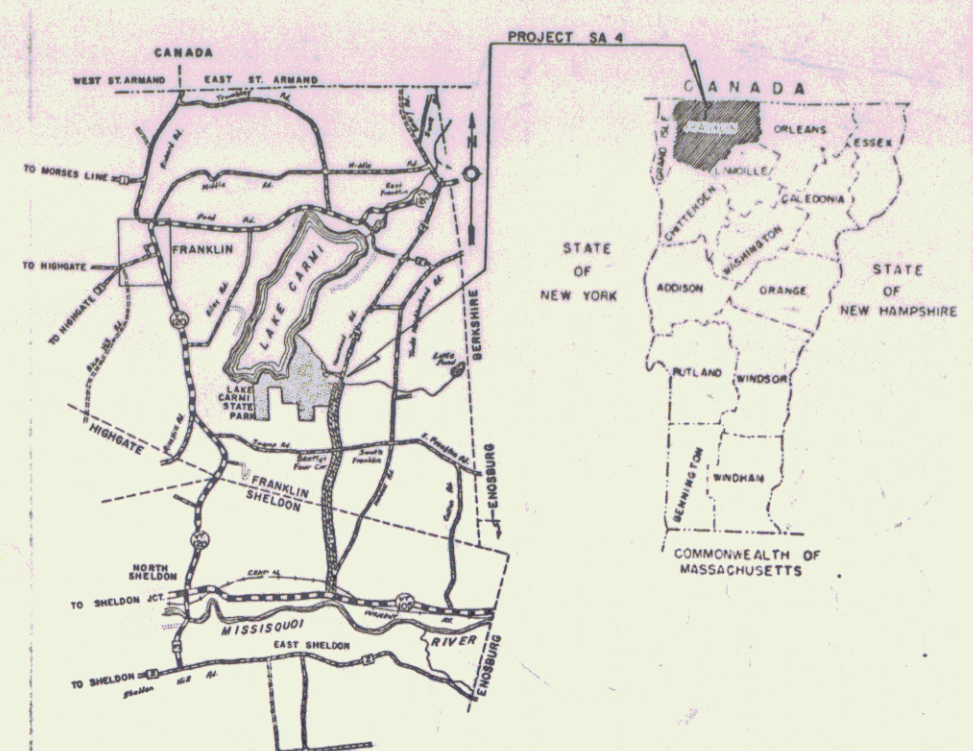
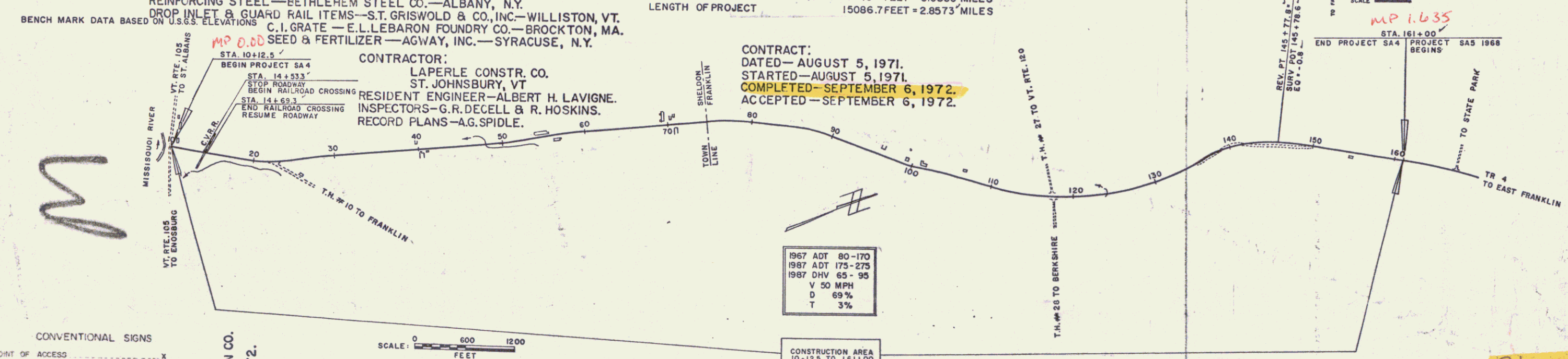
SUBBASE OF GRAVEL — GREEN GRAVEL PIT — ENOSBURG FALLS, VT.
SUBBASE OF SAND — GREEN SAND PIT — ENOSBURG FALLS, VT.
CUTBACK ASPHALT — SHELL, CANADA, LTD. — MONTREAL, QUE.
REFINED TAR — ALLSTATES ASPHALT, INC. — SUNDERLAND, MA.
SAND FOR TACK — ANDERSON PIT — SWANTON, VT.
GRITS — SWANTON LIME CO. — SWANTON, VT.
METAL CULVERT PIPE & C.I. COVERS — NEW ENGLAND MET. CULV. CO. — W.R.JCT, VT.
ASPHALT EMULSION — NEW HAMPSHIRE BITUMINOUS CO. — BOW, N.H.
CONCRETE CLASS B — A.G. ANDERSON READY MIX — SWANTON, VT.
REINFORCING STEEL — BETHLEHEM STEEL CO. — ALBANY, N.Y.
DROP INLET & GUARD RAIL ITEMS — S.T. GRISWOLD & CO., INC. — WILLISTON, VT.
C.I. GRATE — E.L. LEBARON FOUNDRY CO. — BROCKTON, MA.
SEED & FERTILIZER — AGWAY, INC. — SYRACUSE, N.Y.

BEGINNING AT A POINT APPROXIMATELY 1.225 MILES
SOUTHERLY OF THE SHELDON-FRANKLIN TOWN LINE,
AT THE INTERSECTION OF STATE AID ROUTE #7 AND
VERMONT ROUTE #105, AND EXTENDING NORTHEASTERLY
2.8573 MILES INCLUDING RAILROAD CROSSING.

LENGTH OF ROADWAY 15070.7 FEET = 2.8543 MILES
LENGTH OF RAILROAD CROSSING 16 FEET = 0.0030 MILES
LENGTH OF PROJECT 15086.7 FEET = 2.8573 MILES

CONTRACT:
DATED — AUGUST 5, 1971.
STARTED — AUGUST 5, 1971.
COMPLETED — SEPTEMBER 6, 1972.
ACCEPTED — SEPTEMBER 6, 1972.

CONTRACTOR:
LAPERLE CONSTR. CO.
ST. JOHNSBURY, VT.
RESIDENT ENGINEER — ALBERT H. LAVIGNE.
INSPECTORS — G.R. DECELL & R. HOSKINS.
RECORD PLANS — A.G. SPIDLE.



CONVENTIONAL SIGNS

POINT OF ACCESS	X
LIMITS OF ACCESS	---
COUNTY LINE	---
TOWN LINE	---
FENCE LINE	---
STONE WALL	---
UNFENCED PROPERTY	---
GUARD RAIL	---
TRAVELED WAY	---
RAILROAD	---
RETAINING WALL	---
CENTER LINE	---
SURVEY LINE	---
CULVERT	---
DROP INLET	---
TROLLEY POLE	---
POWER POLE	---
TELEPHONE POLE	---
TREES	---
HEDGE	---
P.A. CONSTRUCTION IDENTIFICATION SIGNS	---

SCALE: 0 600 1200 FEET

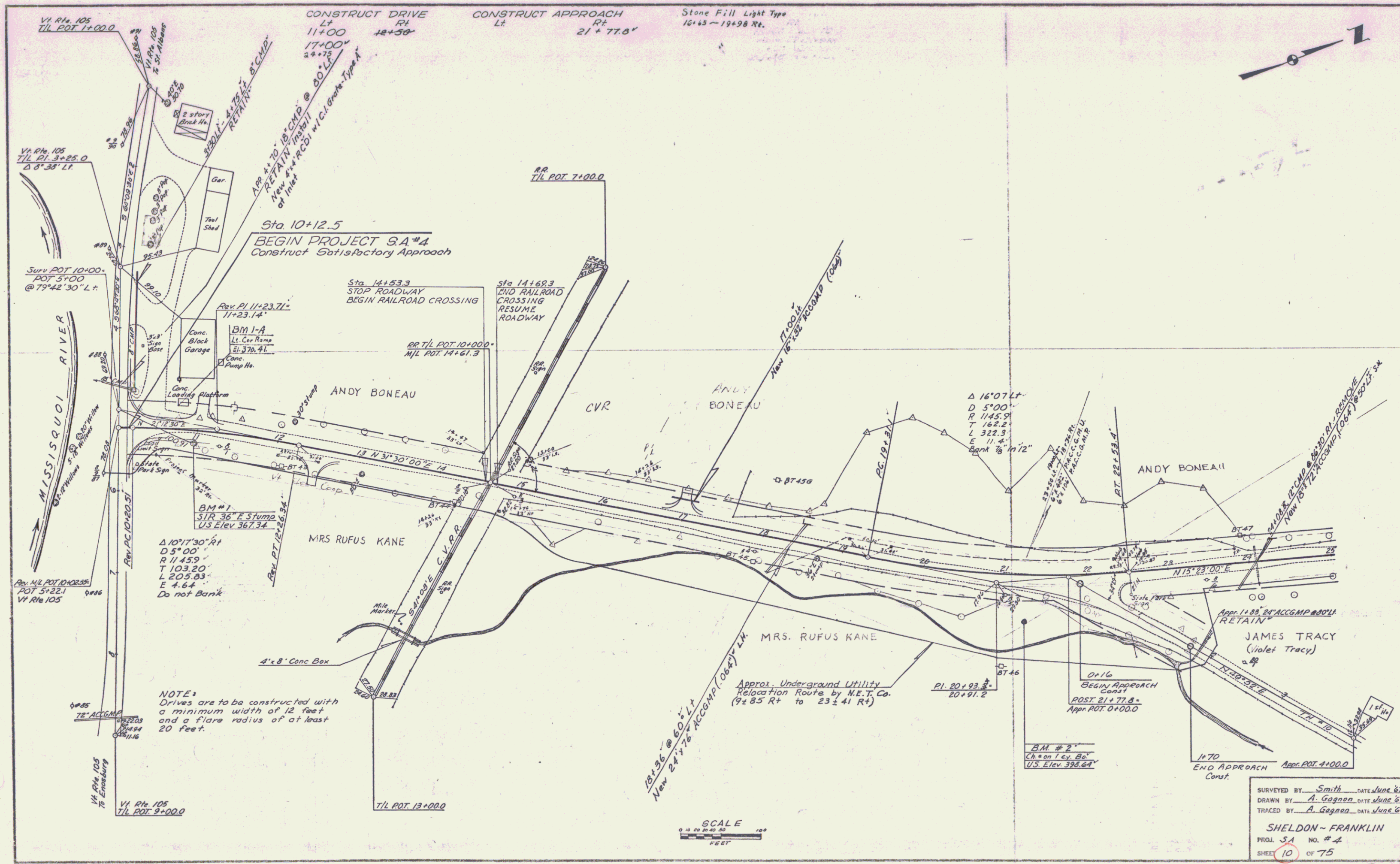
DATE	DATE	DATE	DATE	DATE	DATE	DATE	DATE
9/29/69	10/1/69	3 Oct 69	10/3/69	10/3/69	10/3/69	10/3/69	10/3/69

THESE PLANS ARE SUBJECT TO SUCH REVISIONS AS MAY BE
REQUIRED BY THE CHIEF ENGINEER.
CONSTRUCTION IS TO BE CARRIED ON IN ACCORDANCE WITH
THESE PLANS AND THE STANDARD SPECIFICATIONS FOR HIGHWAY AND BRIDGE
CONSTRUCTION DATED APRIL 1964, AS APPROVED BY THE BUREAU OF
PUBLIC ROADS ON OCTOBER 12, 1964, INCLUDING ALL SUBSEQUENT
APPROVED REVISIONS AND SUCH REVISED SPECIFICATIONS AND SPECIAL
PROVISIONS AS ARE INCORPORATED IN THESE PLANS.

NOTE: ANY FURTHER INFORMATION CONCERNING
FINAL QUANTITIES, AMOUNTS OR OTHER DETAILS
RELATIVE TO THIS PROJECT MAY BE FOUND IN
EITHER THE FIELD BOOKS OR THE ESTIMATE FILE.

APPROVED *K.M. Smith* SECONDARY ENGINEER DATE 9/29/69
APPROVED *G.M. Spidle* CHIEF ENGINEER DATE 10/1/69
APPROVED *W. J. ...* DATE 3 Oct 69
APPROVED *...* DATE 10/3/69
APPROVED *...* DATE 10/3/69
APPROVED *...* DATE 10/3/69
APPROVED *...* DATE 10/3/69

PROJECT SA NO 4
SHEET 1 OF 75 SHEETS

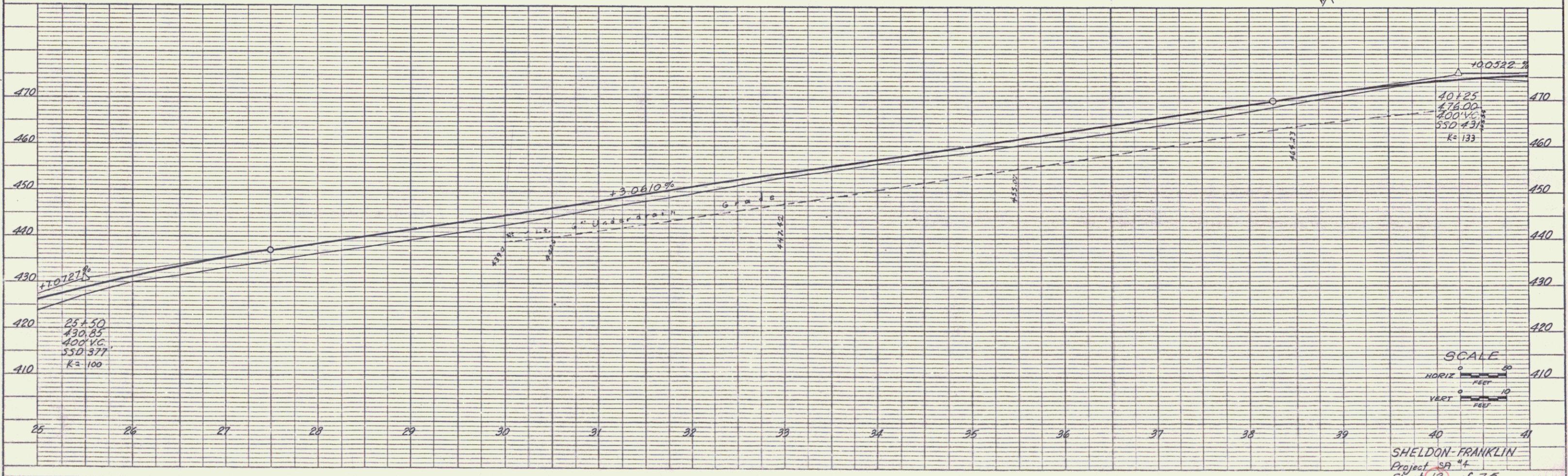
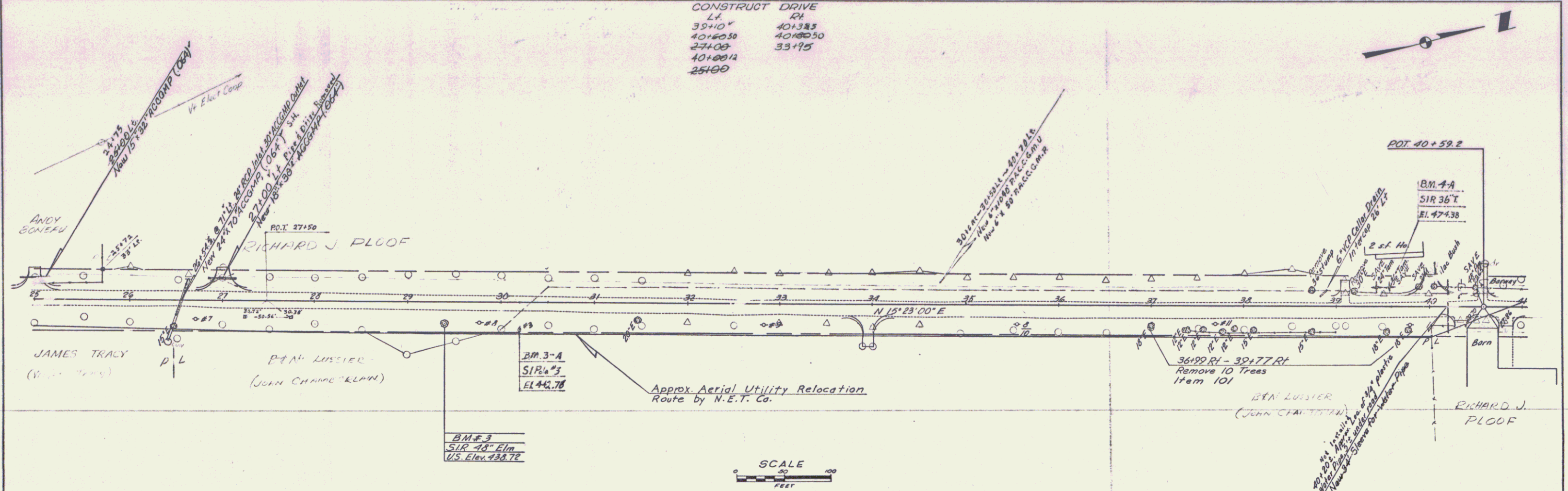


SURVEYED BY Smith DATE June 67
 DRAWN BY A. Gagnon DATE June 67
 TRACED BY A. Gagnon DATE June 67
SHELDON - FRANKLIN
 PROJ. SA NO. # 4
 SHEET 10 OF 75
 D-7

PLAN
 DRAWN BY: A. Gagnon
 CHECKED BY: A. Gagnon
 DATE: 11/15/11
 SHEET NO.: 12 of 15

PROFILE
 DRAWN BY: A. Gagnon
 CHECKED BY: A. Gagnon
 DATE: 11/15/11
 SHEET NO.: 12 of 15

CONSTRUCT DRIVE	
STATION	ELEVATION
39+10	401.383
40+00	408.050
40+12	331.95
40+12	251.00



K&E PLATE 1, PLAN-PROFILE
 REGISTERED & EXERCISE CO.
 48 7012 SUPERIAL™ THERMO PLATE 5711

SHELDON-FRANKLIN
 Project 384
 Sheet 12 of 15

PLAN
 CHECKED BY: A. Grogan
 DATE: 11/11/11
 DRAWN BY: A. Grogan
 DATE: 11/11/11
 PROJECT: 11/11/11
 SHEET: 13 of 15

PROFILE
 CHECKED BY: A. Grogan
 DATE: 11/11/11
 DRAWN BY: A. Grogan
 DATE: 11/11/11
 PROJECT: 11/11/11
 SHEET: 13 of 15

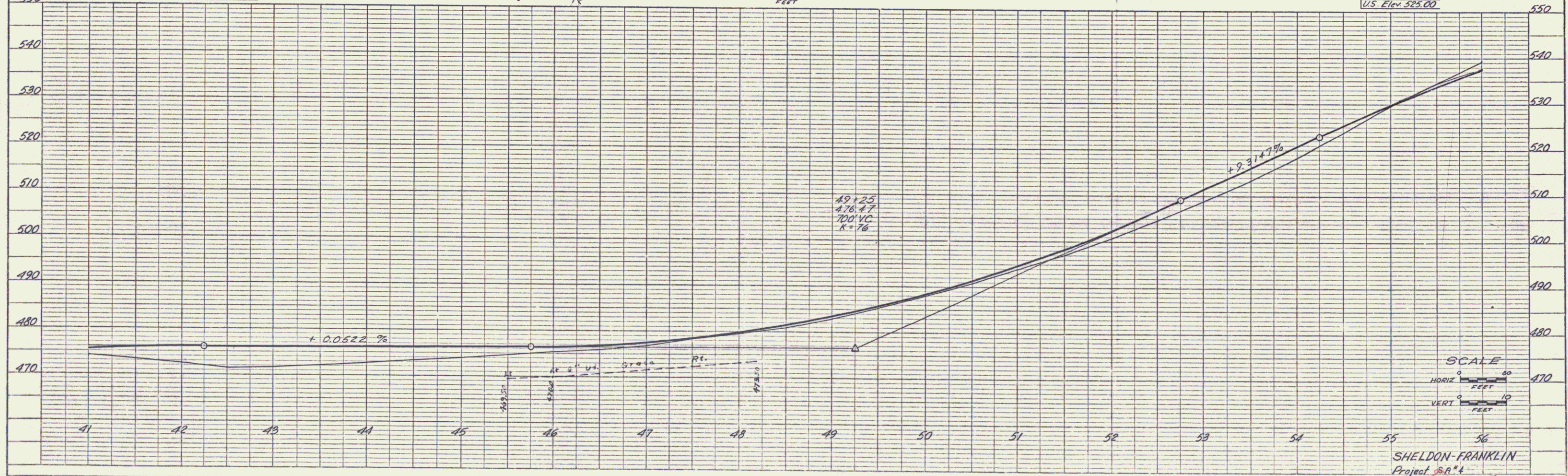
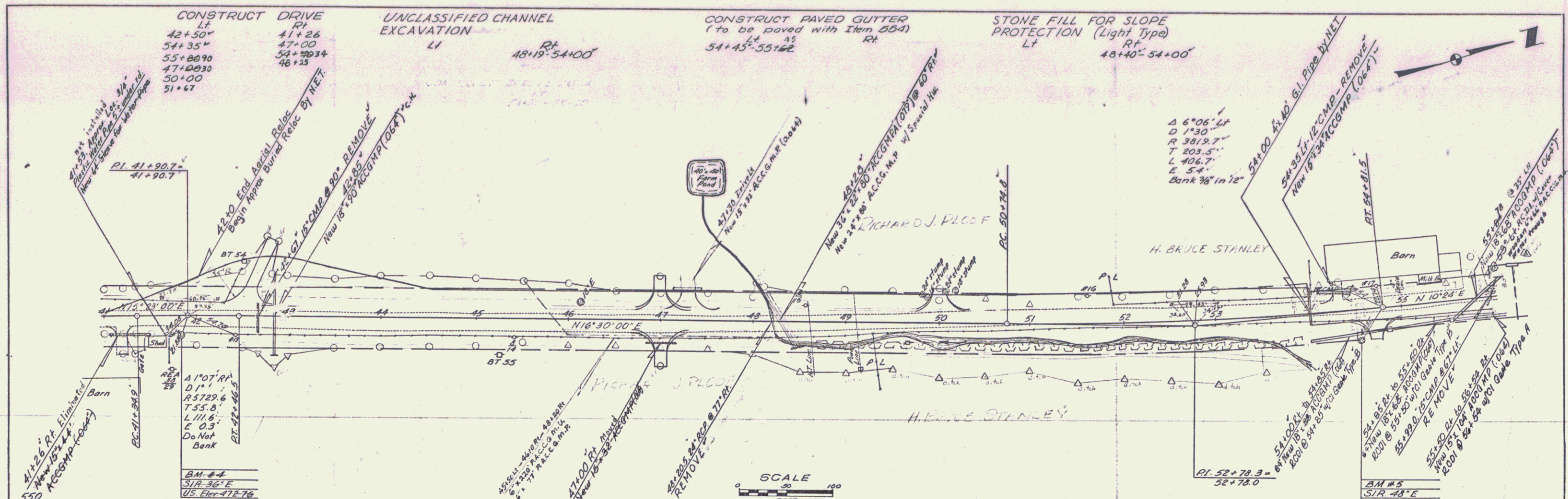


PLATE 1, PLAN-PROFILE
 SHELDON-FRANKLIN
 487012 IMPERIAL ENGINEERING, INC.

SHELDON-FRANKLIN
 Project 11/11/11
 Sheet 13 of 15

PLAN
 SHELDON FRANKLIN
 PROJECT SR 14
 SHEET 14
 DATE 11/27/54
 DRAWN BY A. BAGGINS
 CHECKED BY A. BAGGINS

PROFILE
 SHELDON FRANKLIN
 PROJECT SR 14
 SHEET 14
 DATE 11/27/54
 DRAWN BY A. BAGGINS
 CHECKED BY A. BAGGINS

CONSTRUCT DRIVE
 LT
 61+20.10 57+40
 68+00.75 64+00.20
 70+02.75 70+70
 71+04.50 71+04.50
 67+50 68+10
 64+45

CONSTRUCT PAVED GUTTER
 69+40 ~ 70+00 Lt.

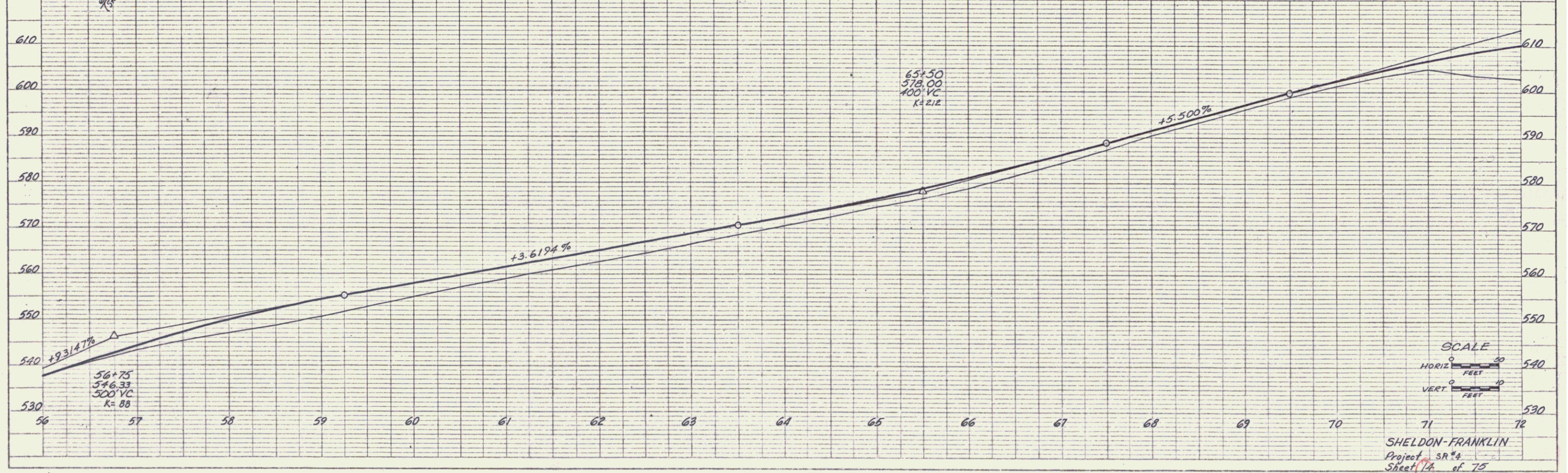
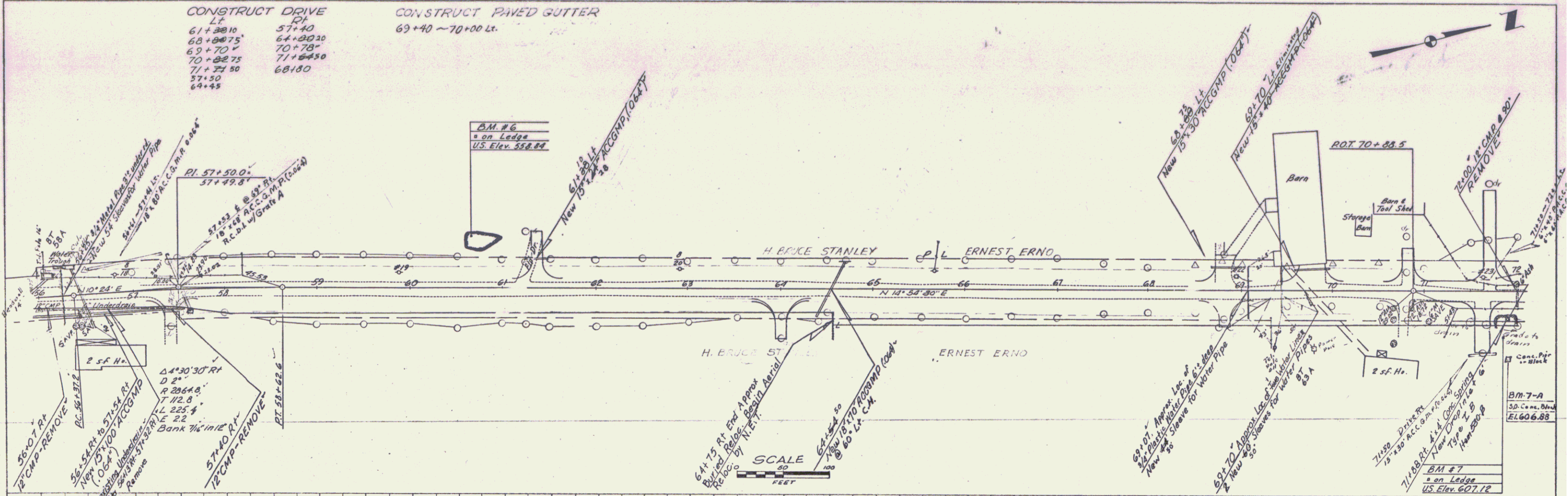


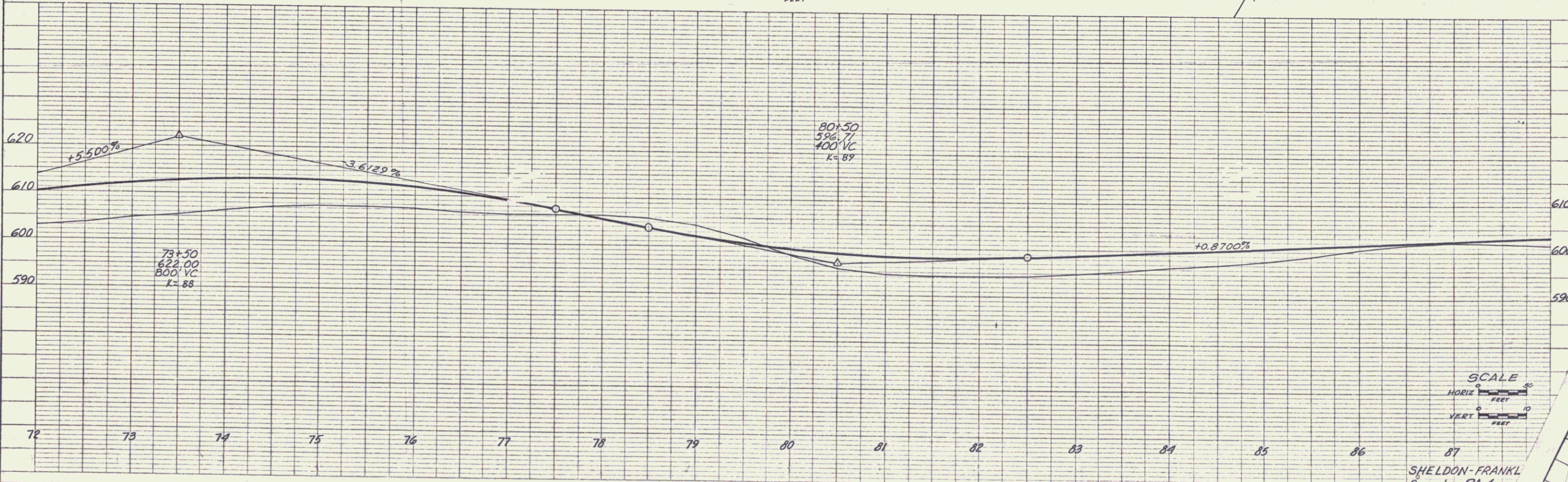
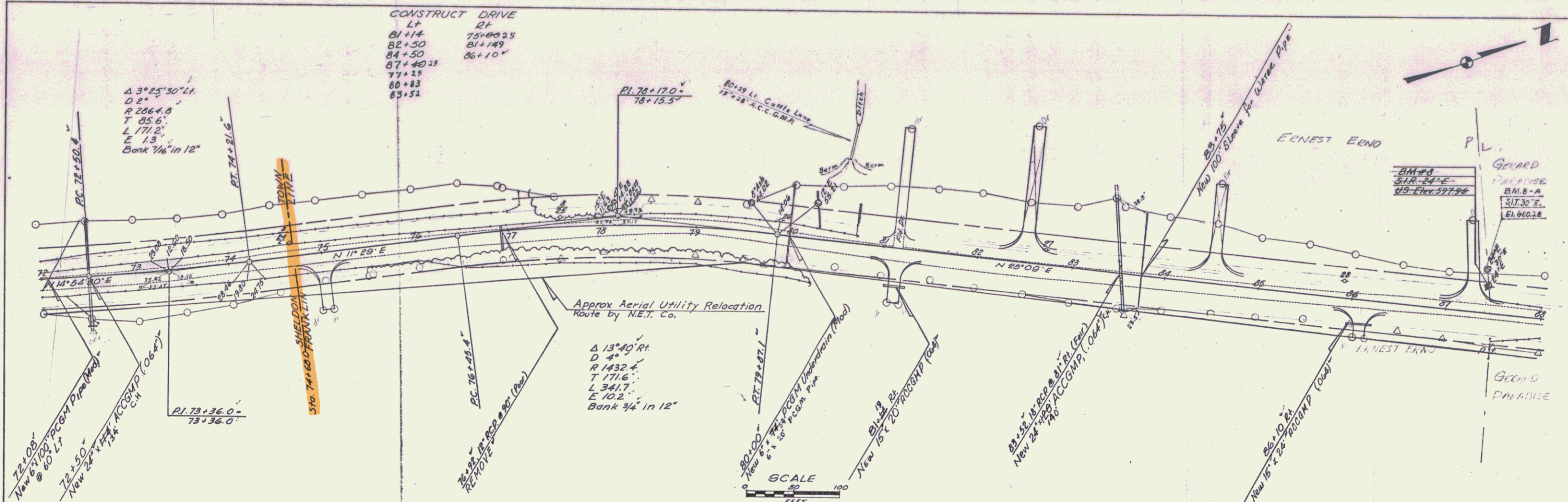
PLATE I. PLAN-PROFILE
 SHELDON FRANKLIN
 PROJECT SR 14
 SHEET 14

SHELDON-FRANKLIN
 Project SR 14
 Sheet 14 of 75

5

DATE: 10/1/57
 DRAWN BY: A. S. Gagnon
 CHECKED BY: A. S. Gagnon
 PROJECT: SHELDON-FRANKL
 SHEET: 15 of 15

DATE: 10/1/57
 DRAWN BY: A. S. Gagnon
 CHECKED BY: A. S. Gagnon
 PROJECT: SHELDON-FRANKL
 SHEET: 15 of 15

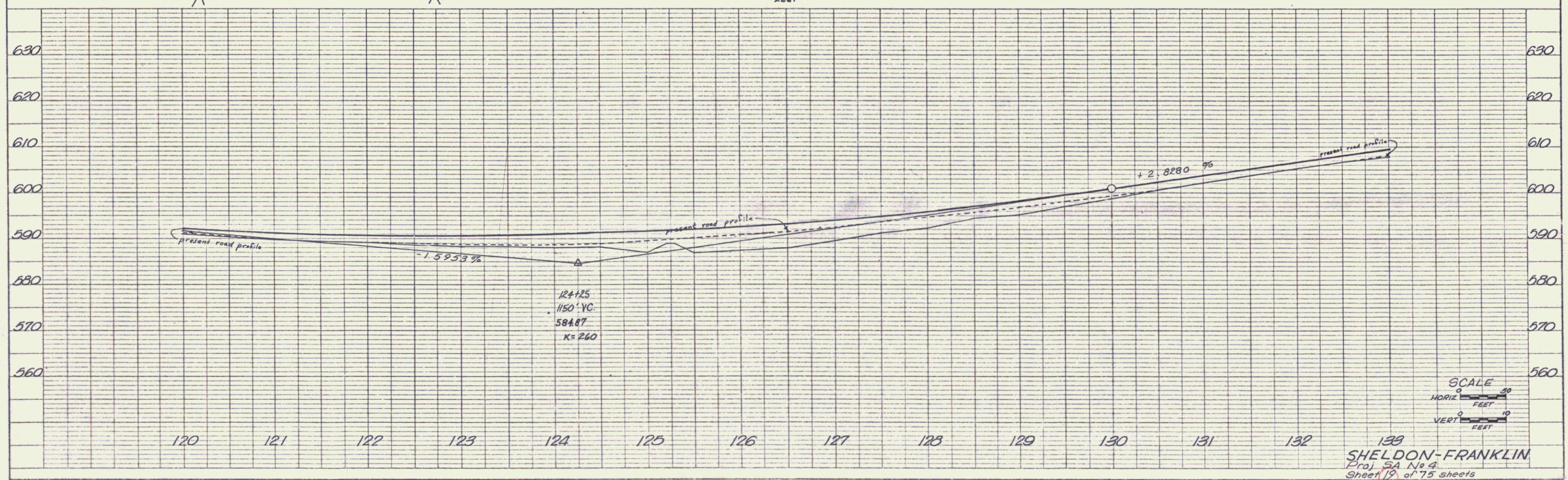
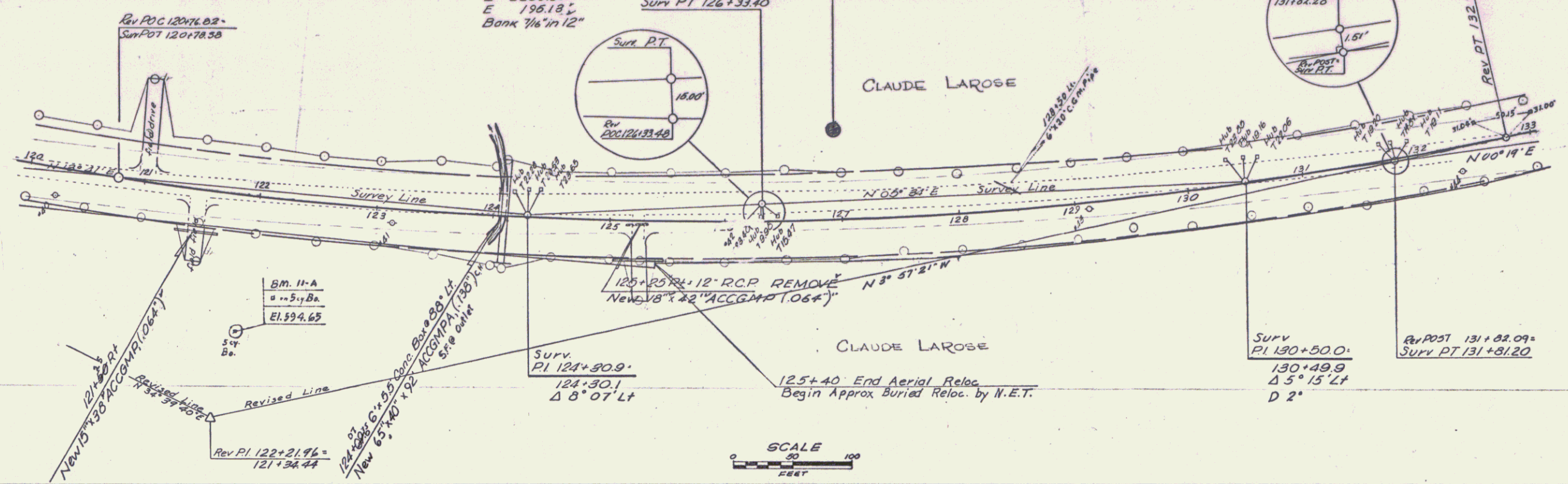


CONSTRUCT DRIVE TWO CABLE GUARD RAIL
 LT RT LT RT
 121+90.55 121+90.25 124+00-124+24 124+00-124+24

CURVE DATA
 Δ 38° 39' 07" LT 35'
 D 1° 45' 1"
 R 3274.0'
 T 1147.10'
 L 2206.68'
 E 196.18'
 Bank 7/8" in 12"

BM #12
 Chis # 5 cy. Ba.
 U.S. Elev 589.68

PLAN
 DESIGNED BY: SMITH, A.P.G.
 CHECKED BY: WAL
 DATE: 6-87
 NO. 7-87
 7-87



PROFILE
 DESIGNED BY: SMITH, A.P.G.
 CHECKED BY: WAL
 DATE: 6-87
 NO. 7-87
 7-87

K-E PLATE 1, PLAN-PROFILE
 SHEET & BOOK 60

139
 SHELDON-FRANKLIN
 Proj. SA No. 4
 Sheet 19 of 75 sheets

