

**INDEX OF SHEETS**

SHEET NO	TITLE PAGE
1	TYPICAL CROSS SECTION OF IMPROVEMENT, BITUMINOUS CONCRETE PAVEMENT-175' x 8' W.D.
2	QUANTITY SHEET, ITEMS
3	QUANTITY SHEET, DRAINAGE
4	QUANTITY SHEET, EARTHWORK
5	PLAN AND PROFILE SHEETS
6-13	PLAN AND PROFILE SHEETS
14	A-61 DRILLING AND BLASTING
15	B-1 DAMPING TABLES
16	B-2 TYPICAL GRADING OF SLOPES
17	B-16 DIVISIONAL ISLANDS
18	C-1 CURBS
19	C-2 SIDEWALK
20	D-1 DRAINAGE
21	D-2
22	D-3
23	D-4
24	D-5 UNDERDRAIN FLUSHING BASIN AND PIPE ELBOWS
25	D-6 CONCRETE BLOCK CATCH BASIN
26	D-7 DROP INLETS
27	D-8 DROP INLET TOPS
28	D-9 TOP FOR DROP INLET WITH GRANITE SLOPE EDGING
29	D-10 GRATES AND COVERS
30	D-11 CONCRETE CATCH BASINS
31	E-1 GARRICADES, SIGNS AND LIGHTS
32	E-2 THREE CABLE RAIL
33	J-1 MARKER POSTS
34	J-2 PROJECT MARKERS
35	J-3 CROSS SECTIONS

**STATE OF VERMONT  
DEPARTMENT OF HIGHWAYS**

**PROPOSED IMPROVEMENT**

**CITY OF MONTPELIER**

COUNTY OF WASHINGTON  
ROUTE U.S. 2 SPUR  
MONTPELIER INTERCHANGE -  
CITY OF MONTPELIER CONNECTION

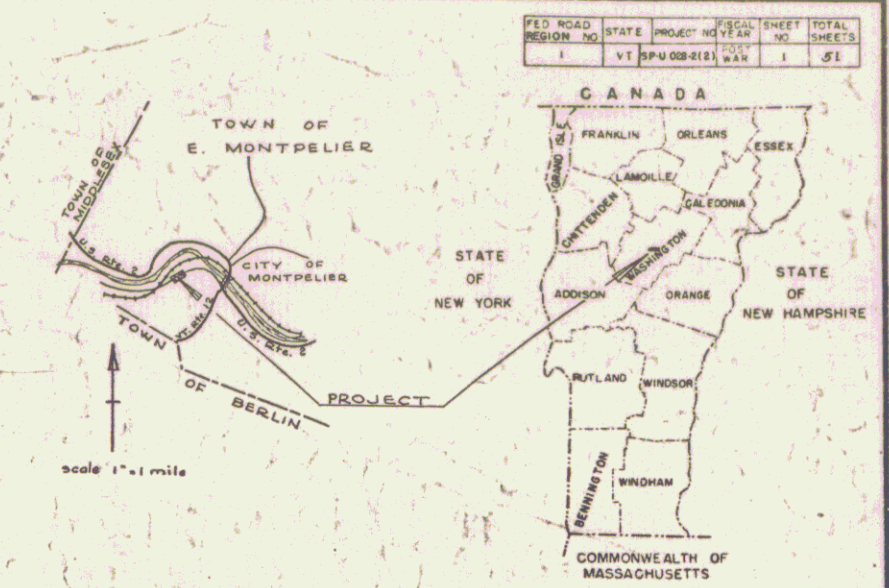
BEGINNING AT A POINT 0.820 MILES WESTERLY OF THE ROUTE U.S. 2 AND VT. ROUTE 12 INTERSECTION AND EXTENDING EASTERLY 0.361 MI.  
LENGTH OF PROJECT 1,907.1 FEET  $V = 0.361$  MILE

1958 ADT	500
1980 ADT	8700
DHW	1240
T	5%
D	5%
V	40 MPH

PROJECT	NUMBER	TYPE	SURFACE AREA
Montpelier	SP-U 028-2 (2)	Bituminous Concrete	12,625 sq

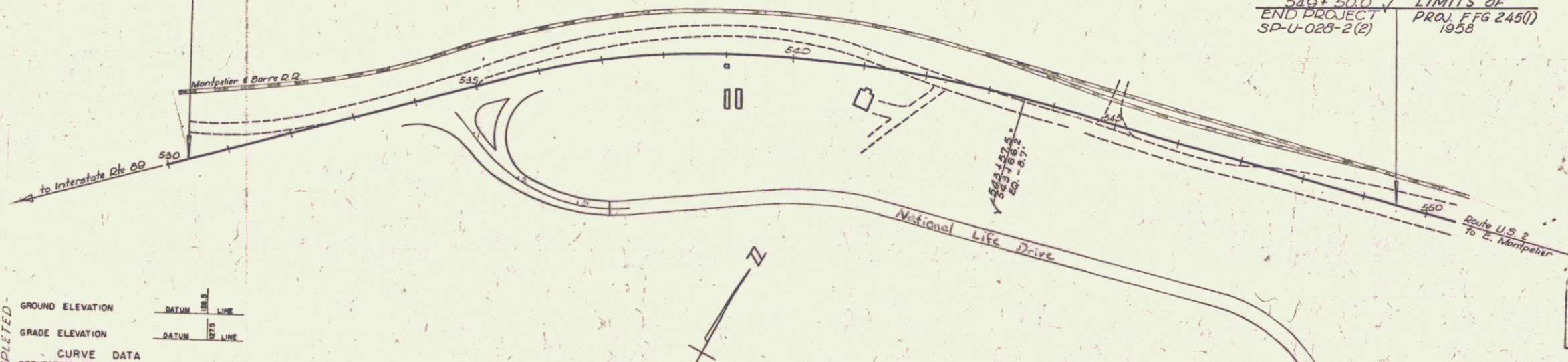
**RECORD PLANS MATERIALS**

GRAVEL - Elmli Pit, Berlin, Vt.	STEEL CO COVERS - LeBoren Foundry, Lynn, Mass.
SAND - Caladonia Sand & Gravel Co. Pitt, Plainfield, Vt.	CAST IRON - Vermont Structural Steel Corp.
GRAVEL - Caladonia Sand & Gravel Co. Pitt, Plainfield, Vt.	WOODRUM IRON - R.M. McDonald's Co., Windsor, Vt.
GRAVEL - Caladonia Sand & Gravel Co. Pitt, Plainfield, Vt.	RCD - Vermont Concrete Pipe Co., Duxbury, Mass.
GRAVEL - Caladonia Sand & Gravel Co. Pitt, Plainfield, Vt.	Home Pipe Co., Swanton, Vt.
GRAVEL - Caladonia Sand & Gravel Co. Pitt, Plainfield, Vt.	ACCUM - New England Metal Co., Palmer, Mass.
GRAVEL - Caladonia Sand & Gravel Co. Pitt, Plainfield, Vt.	C&M - Smith Quarry, Dorset, Vt.
GRAVEL - Caladonia Sand & Gravel Co. Pitt, Plainfield, Vt.	GRANITE - Rock of Ages Corp., Danby, Vt.
GRAVEL - Caladonia Sand & Gravel Co. Pitt, Plainfield, Vt.	BOUNDARY MARKERS - S.T. Griswold Co., Essex Junction, Vt.
GRAVEL - Caladonia Sand & Gravel Co. Pitt, Plainfield, Vt.	SEED - E.W. Bailey & Co., Montpelier, Vt.
GRAVEL - Caladonia Sand & Gravel Co. Pitt, Plainfield, Vt.	E.T. & H.K. Inc., Saint Albans, Vt.
GRAVEL - Caladonia Sand & Gravel Co. Pitt, Plainfield, Vt.	FERTILIZER - E.W. Bailey & Co., Montpelier, Vt.
GRAVEL - Caladonia Sand & Gravel Co. Pitt, Plainfield, Vt.	MULCH - W.C. Kirby, Cochr., Burlington, Vt.



**MP 0.493**  
27+00.0 = 530 + 34.2  
LIMITS OF RAMP W/ BEGIN PROJECT  
PROJ I-09-2 (3) SP-U-028-2 (2)

**MP 0.854**  
540 + 500 / LIMITS OF  
END PROJECT / PROJ FFG 2450)  
SP-U-028-2 (2) 1958



**GROUND ELEVATION** DATUM 1928 LINE

**GRADE ELEVATION** DATUM 1928 LINE

**CURVE DATA**

DEFLECTION OF ANGLE	Δ
DEGREE OF CURVE	D
RADIUS OF CURVE	R
TANGENT DISTANCE	T
LENGTH OF CURVE	L
EXTERNAL DISTANCE	E
POINT OF INTERSECTION	P.I.
POINT OF CURVE	P.C.
POINT OF TANGENT	P.T.
POINT ON TANGENT	P.O.T.
POINT ON SUB-TANGENT	POST

**SCALES**

TITLE	1" = 100'
TYPICAL	1" = 5'
PLAN	1" = 20'
PROFILE HORIZONTAL	1" = 10'
PROFILE VERTICAL	1" = 5' 410'
CROSS SECTIONS	1" = 5' 410'

3" BITUMINOUS CONCRETE PAVEMENT

CALADONIA SAND & GRAVEL CO. INC.  
ST. JOHNSBURY, VERMONT

Location Beginning at a point 0.820 miles westerly of the Route U.S. 2 and Vermont Route 12 intersection and extending easterly 0.361 miles.

MONTPELIER - SP-U 028-2 (2)  
CONTROL PLAN CALADONIA SAND & GRAVEL CO. INC.  
RECORD PLAN CALADONIA SAND & GRAVEL CO. INC.  
CONSTRUCTION COMPLETED

RIGHT-OF-WAY DIVISION  
TOWN FILE  
Perpetual  
Montpelier State Hwy.  
Town of Montpelier  
[To Be Returned To R.O.W. Division]

Pin # 99R670  
Route: ST HWY

NOTE: ANY FURTHER INFORMATION CONCERNING FINAL QUANTITIES, AMOUNTS OF MATERIALS RELATIVE TO THIS PROJECT MAY BE OBTAINED EITHER THE FIELD BOOKS OR THE ESTIMATE FILE.

THESE PLANS ARE SUBJECT TO SUCH REVISIONS AS MAY BE REQUIRED BY THE BUREAU OF PUBLIC ROADS OR THE COMMISSIONER OF HIGHWAYS.

CONSTRUCTION IS TO BE CARRIED ON IN ACCORDANCE WITH THE PLANS AND THE STANDARD SPECIFICATIONS FOR HIGHWAY AND BRIDGE CONSTRUCTION OF JANUARY 1956 SUBMITTED TO THE BUREAU OF PUBLIC ROADS AS APPROVED JULY 5, 1956, INCLUDING ALL SUBSEQUENT APPROVED REVISIONS AND SUCH REVISED SPECIFICATIONS AND SPECIAL PROVISIONS AS ARE SUBMITTED WITH THE PLANS.

APPROVED SECONDARY ENGINEER	APPROVED CONSTRUCTION ENGINEER	APPROVED BRIDGE ENGINEER	APPROVED DISTRICT ENGINEER	APPROVED HIGHWAY ENGINEER	APPROVED CHIEF ENGINEER
DATE	DATE 10-24-1958	DATE	DATE October 23, 1958	DATE 10-24-58	DATE 10-24-58

DEPARTMENT OF COMMERCE  
BUREAU OF PUBLIC ROADS

APPROVED

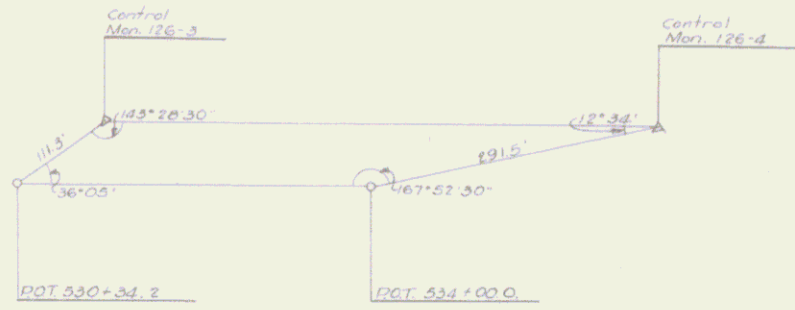
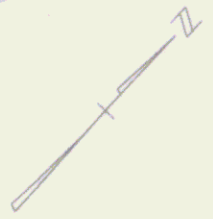
DIVISION ENGINEER DATE

PROJECT SP-U No. 028-2(2)

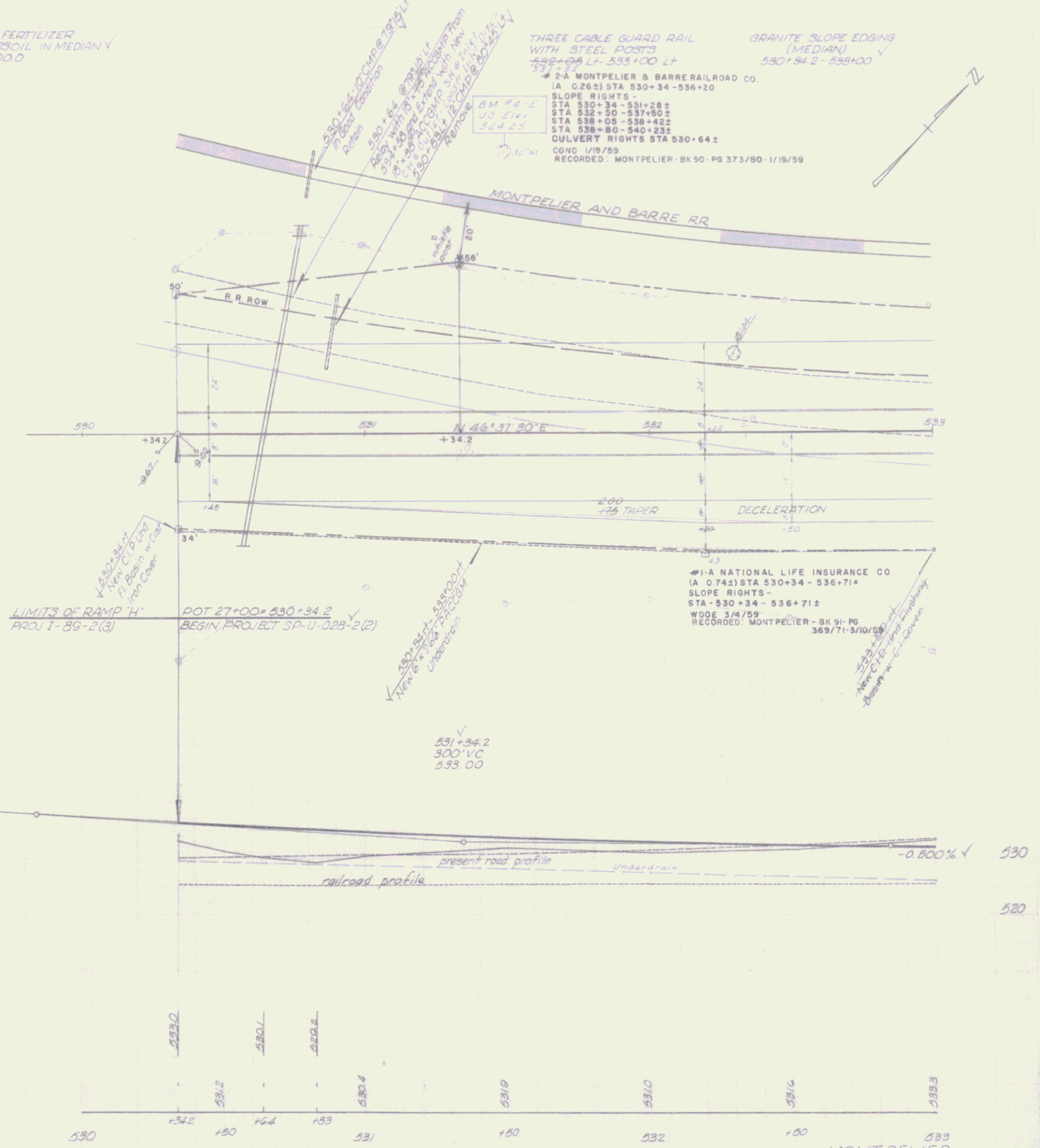
SHEET 1 OF 51 SHEETS

SEEDING COMMERCIAL FERTILIZER  
FOR GRASSES AND TOPSOIL IN MEDIAN  
530+34.2 - 533+00.0

THREE CABLE GUARD RAIL  
WITH STEEL POSTS  
485+28 LF - 533+00 LF  
2-A MONTPELIER & BARRE RAILROAD CO.  
A. C. 263 STA 530+34 - 536+20  
SLOPE RIGHTS -  
STA 530+34 - 531+28±  
STA 531+30 - 537+90±  
STA 538+05 - 538+42±  
STA 538+80 - 540+23±  
CULVERT RIGHTS STA 530+64±  
COND. 1/19/59  
RECORDED: MONTPELIER - BK 90 - PG 373/80 - 1/19/59



CROSS TIES to PHOTO CONTROL



#1-A NATIONAL LIFE INSURANCE CO  
(A. 0742) STA 530+34 - 536+71±  
SLOPE RIGHTS -  
STA - 530+34 - 536+71±  
WDDE 3/4/59  
RECORDED: MONTPELIER - BK 91 - PG 369/71-3/10/59

BM #4-E SIR 30'M 100' LI 531+50 Elev. 524.25

MONTPELIER  
SP-U-285-2(2)  
Sheet 6 of 51

Survey  
 POT 534+37.9=  
 0+05.66 APPR RT  
 Δ 66° 52' 30"

GRANITE SLOPE EDGING  
 (MEDIAN)  
 533+00-534+30  
 535+34.8-539+00  
 (1314.19) 535+00 RI  
 THREE CABLE GUARD RAIL  
 WITH STEEL POSTS  
 533+00 LT-535+92 LT  
 536+00

CONCRETE GRAVITY CURB  
 536+25-539+00 Lt & Rt

CONSTRUCT APPROACH  
 535+00 RT  
 Sheets 13 and 49 to 51 of 51

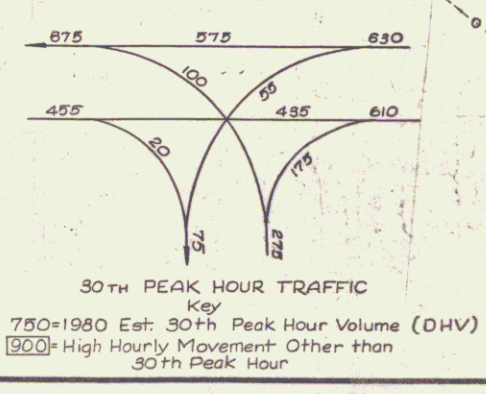
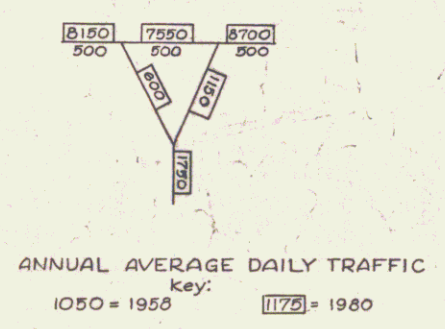
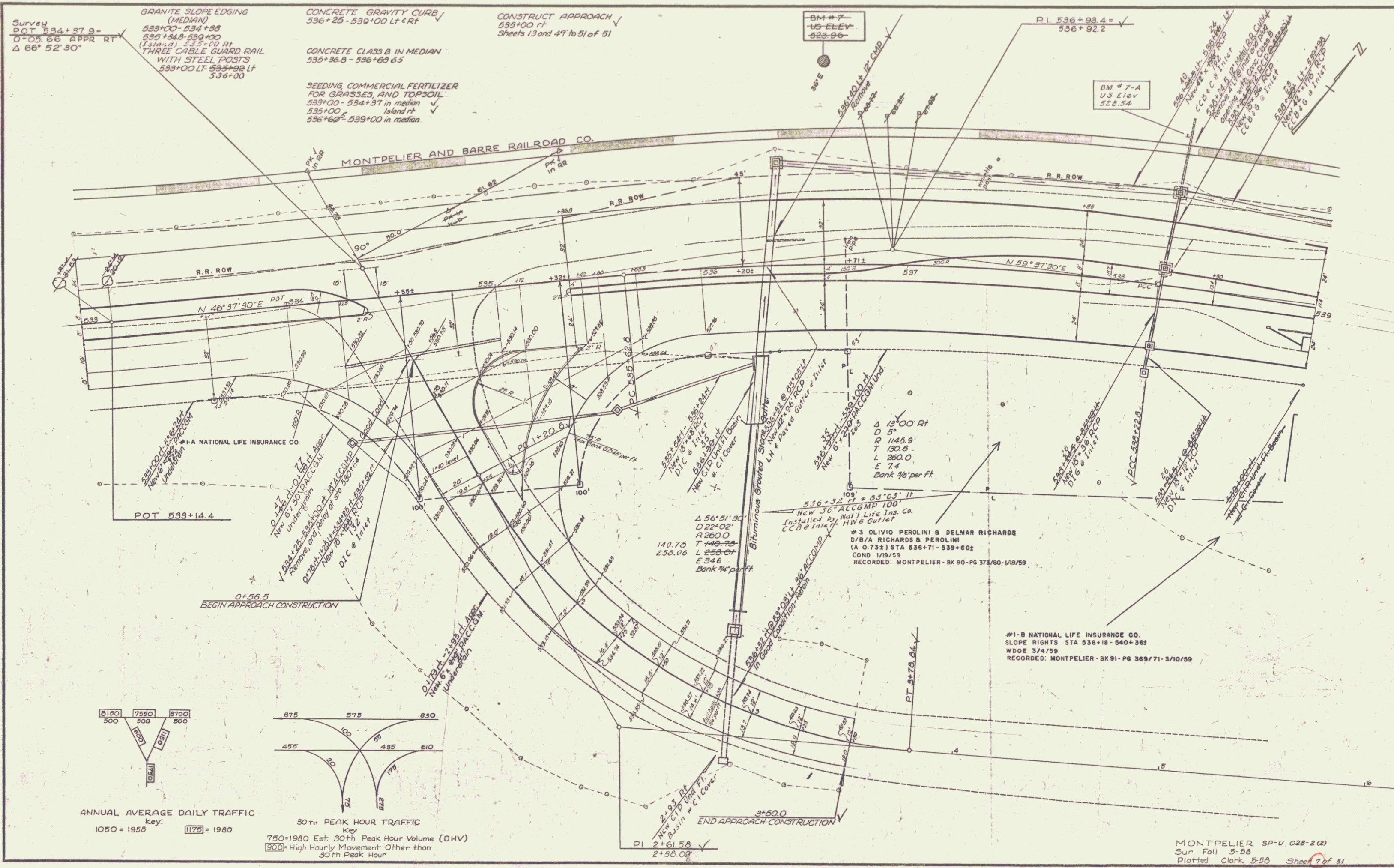
CONCRETE CLASS B IN MEDIAN  
 535+36.8-536+60.5

SEEDING COMMERCIAL FERTILIZER  
 FOR GRASSES, AND TOPSOIL  
 533+00-534+37 in median  
 535+00 Island rt  
 536+60-539+00 in median

BM # 7  
 US ELEV.  
 523.96

PI 536+93.4=  
 536+92.2

BM # 7-A  
 US Elev  
 522.56



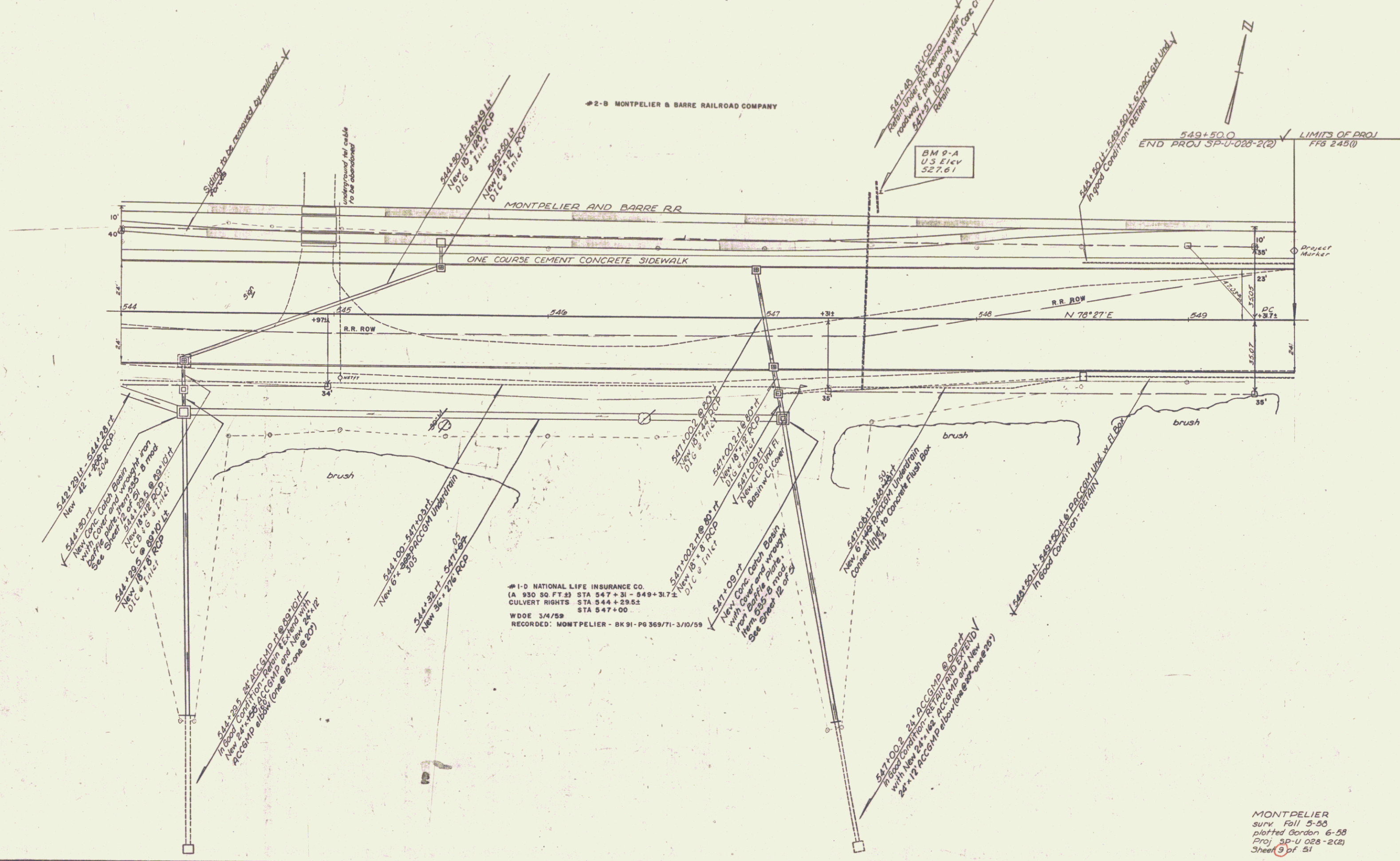
MONTPELIER 5P-U 028-2(2)  
 Sur Fall 5-58  
 Plotted Clark 5-58 Sheet 7 of 51



CONC GRAVITY CURB  
544+00-549+50 LT&RT

ONE COURSE CEMENT CONC SIDEWALK  
544+00 LT - 549+50 LT

2-B MONTPELIER & BARRE RAILROAD COMPANY



#1-D NATIONAL LIFE INSURANCE CO.  
 (A 930 SQ. FT.) STA 547+31 - 549+31.7  
 CULVERT RIGHTS STA 544+29.5  
 W.D.D.E 3/4/59 STA 547+00  
 RECORDED: MONTPELIER - BK 91 - PG 369/71 - 3/10/59

MONTPELIER  
 surv. Fall 5-58  
 plotted Gordon 6-58  
 Proj. SP-U-028-2(2)  
 Sheet 9 of 51