

INDEX OF SHEETS

SHEET #0	1	TITLE PAGE
	2	TYPICAL CROSS SECTION OF IMPROVEMENT DOUBLE TACK COAT OF REFINED TAR WITH PEAS STONE SEAL (MODIFIED)
	3	BANKING AND WIDENING TABLES
	4	QUANTITY SHEET (ITEM AND DRAINAGE)
	5-7	EARTHWORK SHEETS
	8	STANDARD STRUCTURE SHEET CD (DRAINAGE AND MARKERS)
	9	STANDARD STRUCTURE SHEET CD-1 (DITCHES)
	10	STANDARD STRUCTURE SHEET S-40 (BARRICADES, SIGNS AND LIGHTS)
	11	STANDARD STRUCTURE SHEET S.L.A.G. (50) (ABUTMENT DETAILS)
	12	STANDARD STRUCTURE SHEET 80-4-5-1 (DETAILS OF CURBS AND RAILS)
	13	STANDARD STRUCTURE SHEET 80-11 (BARRICADES SIGNS AND LIGHTS)
	14	WIDENING DETAILS
	15	REINFORCING STEEL SCHEDULE
	16-23	PLAN AND PROFILE SHEETS
	24-48	CROSS SECTIONS

STANDARD STRUCTURE SHEET APPROVED BY THE CHIEF ENGINEER, VERMONT STATE DEPARTMENT OF HIGHWAYS
S-40 JUNE 10, 1950

STATE OF VERMONT
DEPARTMENT OF HIGHWAYS
PROPOSED IMPROVEMENT

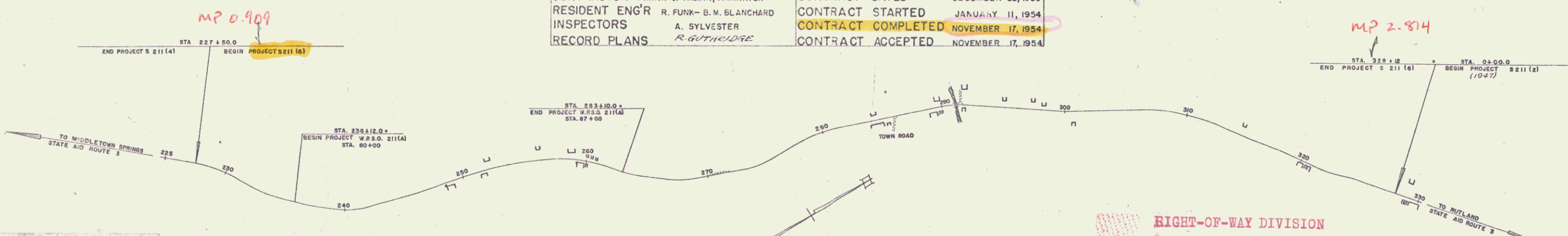
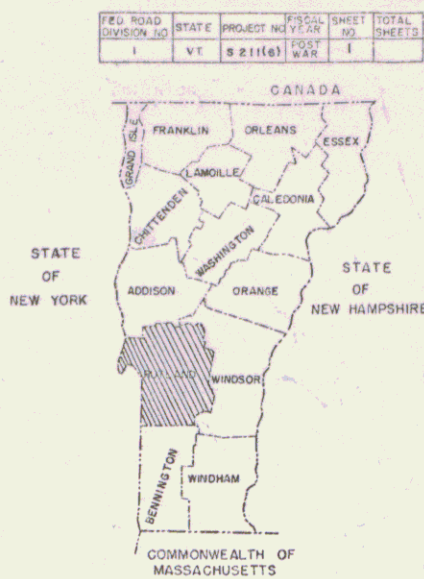
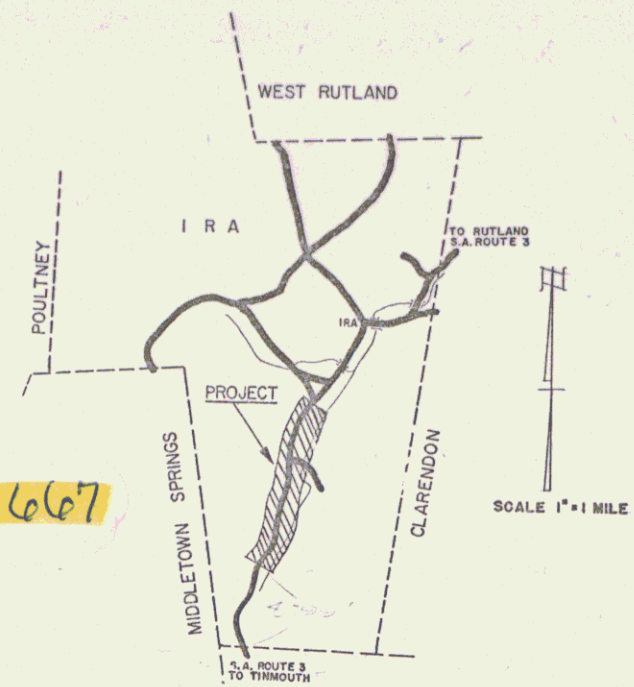
TOWN OF IRA
COUNTY OF RUTLAND
VERMONT ROUTE 3
TINMOUTH-RUTLAND ROAD

BEGINNING AT A POINT 4,799.4 FEET NORTHERLY OF TINMOUTH-IRA TOWN LINE AND EXTENDING NORTHERLY 10,062 FEET.

Pin# 99R667

LENGTH OF PROJECT 10,062 FEET = 1.906 MILES

PROJECT NAME & NUMBER	TYPE	PAVEMENT AREA
IRA S 211 (6)	DBL TK COAT	22667 S.Y.
RECORD PLANS		
MATERIALS		
SUB-BASE OF GRAVEL	PARKER PIT MIDDLETOWN SPRINGS	REINF STEEL RYERSON & SONS CO, BOSTON, MASS.
REFINED TAR SEAL	KOPPERS PRODUCTS CO. EVERETT MASS.	RCP VT. CONCRETE PIPE CORP, WINDSOR
PEASTONE FOR SEAL	CLARK & HAYNES, POULTNEY	ACCGMP BERGER MET. CULV. CO. BOSTON, MASS.
CEMENT	GLENS FALLS PORT CEM. CO, GLENS FALLS, N.Y.	CABLE FOR G.R. BETHLEHEM STEEL CO. BOSTON, MASS.
CONTRACTOR	FRANK J. FABIAN, FAIRHAVEN	CONTRACT DATED DECEMBER 22, 1953
RESIDENT ENGR	R. FUNK - B. M. BLANCHARD	CONTRACT STARTED JANUARY 11, 1954
INSPECTORS	A. SYLVESTER	CONTRACT COMPLETED NOVEMBER 17, 1954
RECORD PLANS	R. GUTHRIE	CONTRACT ACCEPTED NOVEMBER 17, 1954



LENGTH	1,906
YEAR	1954
CONTRACTOR	FRANK J. FABIAN
RESIDENT ENGINEER	R. FUNK - B. M. BLANCHARD
INSPECTOR	A. SYLVESTER
RECORD PLANS	R. GUTHRIE

GROUND ELEVATION	DATUM	LINE
GRADE ELEVATION	DATUM	LINE
CURVE DATA		
DEFLECTION OF ANGLE	A	
DEGREE OF CURVE	D	
RADIUS OF CURVE	R	
TANGENT DISTANCE	T	
LENGTH OF CURVE	L	
EXTERNAL DISTANCE	E	
POINT OF INTERSECTION	P.I.	
POINT OF CURVE	P.C.	
POINT OF TANGENT	P.T.	
POINT ON TANGENT	P.O.T.	
POINT ON SUB-TANGENT	P.O.S.T.	

SCALES

TITLE	1" = 400'
TYPICAL	1" = 2'
PLAN	1" = 50'
PROFILE HORIZONTAL	1" = 50'
PROFILE VERTICAL	1" = 10'
CROSS-SECTIONS	1" = 5'

RIGHT-OF-WAY DIVISION
TOWN FILE
PERPETUAL
Town of IRA S.A.
(To Be Returned To R.O.W. Division)

THESE PLANS ARE SUBJECT TO SUCH REVISIONS AS MAY BE REQUIRED BY THE BUREAU OF PUBLIC ROADS OR THE COMMISSIONER OF HIGHWAYS.
CONSTRUCTION IS TO BE CARRIED ON IN ACCORDANCE WITH THE PLANS AND THE STANDARD ROAD AND BRIDGE SPECIFICATIONS OF 1948, AS APPROVED JULY 25, 1949 BY THE BUREAU OF PUBLIC ROADS, INCLUDING ALL SUBSEQUENT APPROVED REVISIONS AND SUCH REVISED SPECIFICATIONS AND SPECIAL PROVISIONS AS ARE SUBMITTED WITH THE PLANS.

DEPARTMENT OF COMMERCE BUREAU OF PUBLIC ROADS	
APPROVED	DATE
DISTRICT ENGINEER	
PROJECT S NO. 211 (6)	
SHEET 1 OF 48 SHEETS	

APPROVED <i>[Signature]</i> CONSTRUCTION ENGINEER DATE NOV 2 1953	APPROVED <i>[Signature]</i> BRIDGE ENGINEER DATE	APPROVED <i>[Signature]</i> DISTRICT ENGINEER DATE NOV 2 1953	APPROVED <i>[Signature]</i> CHIEF ENGINEER DATE NOV 2 1953
---	--	---	--

WOOD GUIDE POSTS

STA	STA	LT	RT
249+15	251+24	5	13
249+70	250+50	1	1
252+16	256+36	1	27
252+08		1	1
258+12	262+30	1	1
261+32	262+30	1	1
262+22		1	1
264+64	264+80	1	2

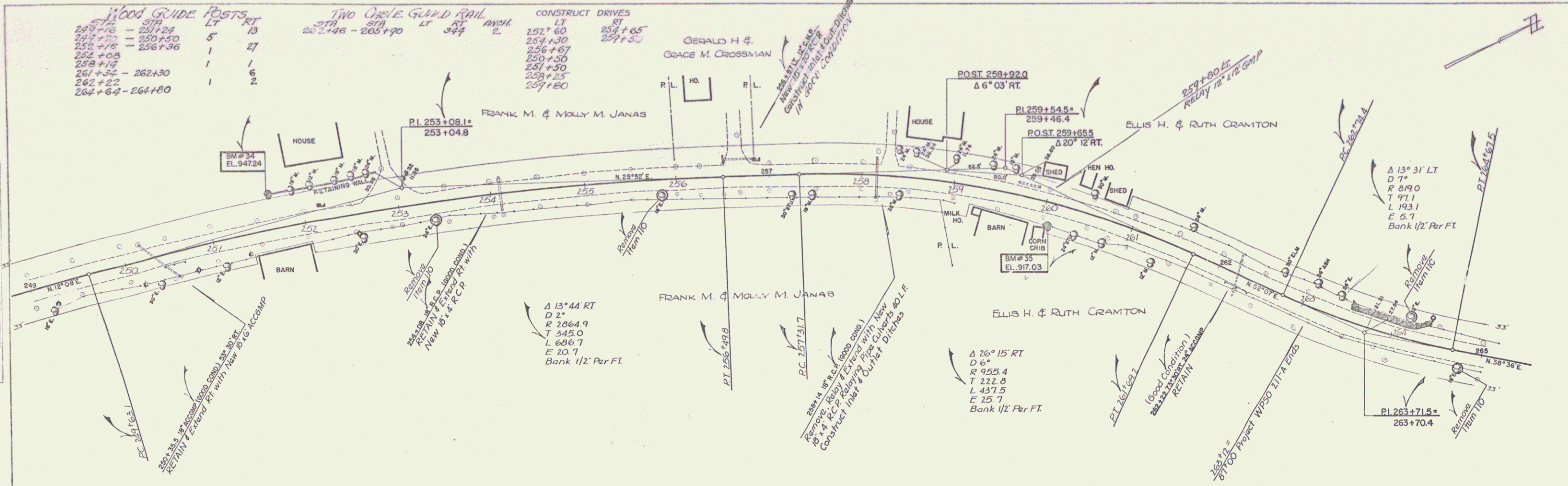
TWO CASTLE GUARD RAIL

STA	STA	LT	RT	ANCH.
252+46	265+90	344	2	

CONSTRUCT DRIVES

LT	RT
252+60	254+65
254+30	259+50
256+67	
250+50	
251+50	
258+25	
259+80	

DATE: 6/23
 DRAWN BY: R. L. HARR
 CHECKED BY: J. L. HARR
 PROJECT NO.: 703
 SHEET NO.: 40



DATE: 6/23
 DRAWN BY: R. L. HARR
 CHECKED BY: J. L. HARR
 PROJECT NO.: 703
 SHEET NO.: 40

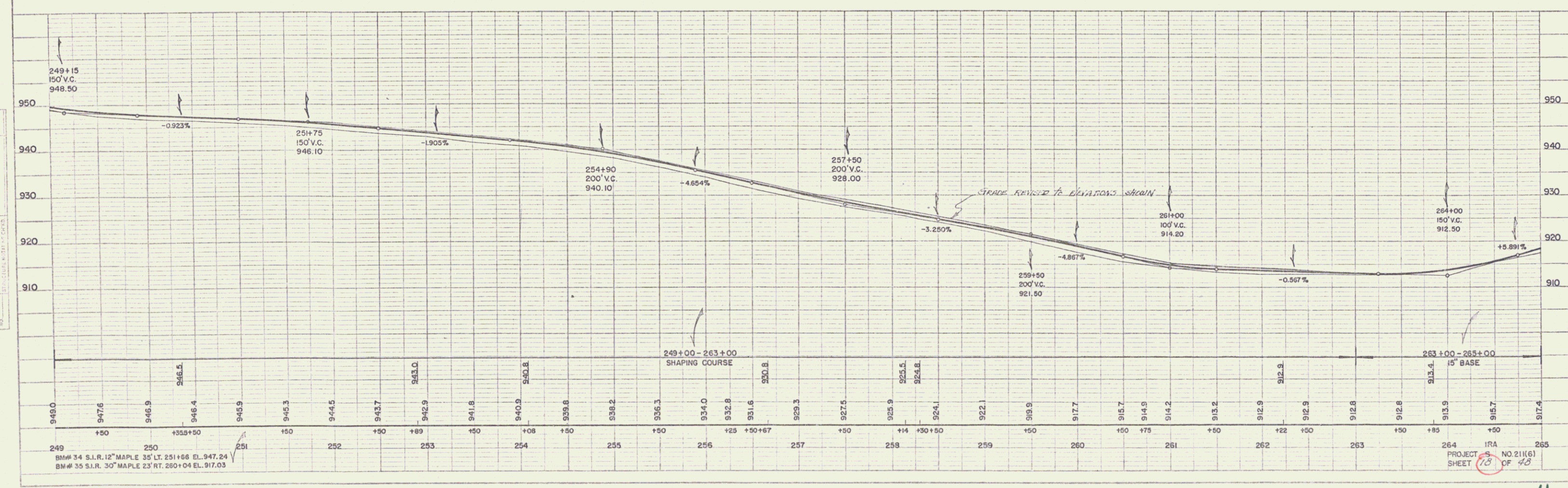
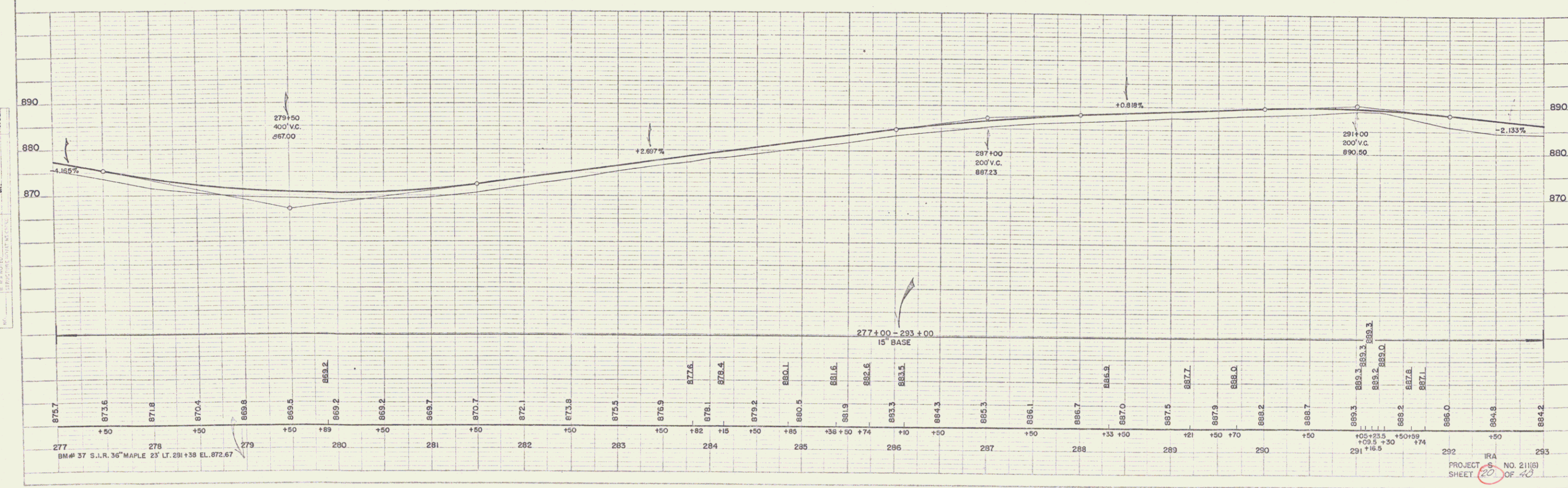
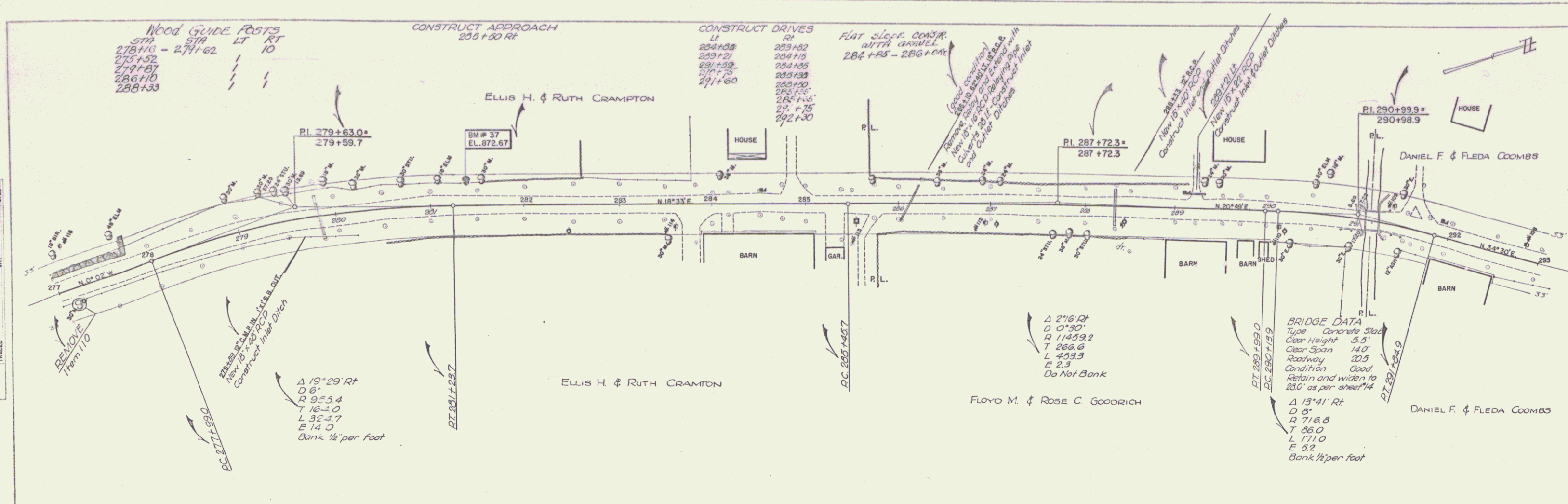


PLATE 1 - PLAN & PROFILE
 NEW YORK STATE DEPARTMENT OF TRANSPORTATION
 DIVISION OF HIGHWAYS
 ALBANY, N. Y.

PLAN	DATE	BY
6/23	SPALLONE	6/23
7/23	W. J. WALKER	7/23
8/23	W. J. WALKER	8/23
9/23	W. J. WALKER	9/23
10/23	W. J. WALKER	10/23
11/23	W. J. WALKER	11/23
12/23	W. J. WALKER	12/23
1/24	W. J. WALKER	1/24
2/24	W. J. WALKER	2/24
3/24	W. J. WALKER	3/24
4/24	W. J. WALKER	4/24
5/24	W. J. WALKER	5/24
6/24	W. J. WALKER	6/24
7/24	W. J. WALKER	7/24
8/24	W. J. WALKER	8/24
9/24	W. J. WALKER	9/24
10/24	W. J. WALKER	10/24
11/24	W. J. WALKER	11/24
12/24	W. J. WALKER	12/24
1/25	W. J. WALKER	1/25
2/25	W. J. WALKER	2/25
3/25	W. J. WALKER	3/25
4/25	W. J. WALKER	4/25
5/25	W. J. WALKER	5/25
6/25	W. J. WALKER	6/25
7/25	W. J. WALKER	7/25
8/25	W. J. WALKER	8/25
9/25	W. J. WALKER	9/25
10/25	W. J. WALKER	10/25
11/25	W. J. WALKER	11/25
12/25	W. J. WALKER	12/25
1/26	W. J. WALKER	1/26
2/26	W. J. WALKER	2/26
3/26	W. J. WALKER	3/26
4/26	W. J. WALKER	4/26
5/26	W. J. WALKER	5/26
6/26	W. J. WALKER	6/26
7/26	W. J. WALKER	7/26
8/26	W. J. WALKER	8/26
9/26	W. J. WALKER	9/26
10/26	W. J. WALKER	10/26
11/26	W. J. WALKER	11/26
12/26	W. J. WALKER	12/26
1/27	W. J. WALKER	1/27
2/27	W. J. WALKER	2/27
3/27	W. J. WALKER	3/27
4/27	W. J. WALKER	4/27
5/27	W. J. WALKER	5/27
6/27	W. J. WALKER	6/27
7/27	W. J. WALKER	7/27
8/27	W. J. WALKER	8/27
9/27	W. J. WALKER	9/27
10/27	W. J. WALKER	10/27
11/27	W. J. WALKER	11/27
12/27	W. J. WALKER	12/27
1/28	W. J. WALKER	1/28
2/28	W. J. WALKER	2/28
3/28	W. J. WALKER	3/28
4/28	W. J. WALKER	4/28
5/28	W. J. WALKER	5/28
6/28	W. J. WALKER	6/28
7/28	W. J. WALKER	7/28
8/28	W. J. WALKER	8/28
9/28	W. J. WALKER	9/28
10/28	W. J. WALKER	10/28
11/28	W. J. WALKER	11/28
12/28	W. J. WALKER	12/28
1/29	W. J. WALKER	1/29
2/29	W. J. WALKER	2/29
3/29	W. J. WALKER	3/29
4/29	W. J. WALKER	4/29
5/29	W. J. WALKER	5/29
6/29	W. J. WALKER	6/29
7/29	W. J. WALKER	7/29
8/29	W. J. WALKER	8/29
9/29	W. J. WALKER	9/29
10/29	W. J. WALKER	10/29
11/29	W. J. WALKER	11/29
12/29	W. J. WALKER	12/29
1/30	W. J. WALKER	1/30
2/30	W. J. WALKER	2/30
3/30	W. J. WALKER	3/30
4/30	W. J. WALKER	4/30
5/30	W. J. WALKER	5/30
6/30	W. J. WALKER	6/30
7/30	W. J. WALKER	7/30
8/30	W. J. WALKER	8/30
9/30	W. J. WALKER	9/30
10/30	W. J. WALKER	10/30
11/30	W. J. WALKER	11/30
12/30	W. J. WALKER	12/30
1/31	W. J. WALKER	1/31
2/31	W. J. WALKER	2/31
3/31	W. J. WALKER	3/31
4/31	W. J. WALKER	4/31
5/31	W. J. WALKER	5/31
6/31	W. J. WALKER	6/31
7/31	W. J. WALKER	7/31
8/31	W. J. WALKER	8/31
9/31	W. J. WALKER	9/31
10/31	W. J. WALKER	10/31
11/31	W. J. WALKER	11/31
12/31	W. J. WALKER	12/31
1/32	W. J. WALKER	1/32
2/32	W. J. WALKER	2/32
3/32	W. J. WALKER	3/32
4/32	W. J. WALKER	4/32
5/32	W. J. WALKER	5/32
6/32	W. J. WALKER	6/32
7/32	W. J. WALKER	7/32
8/32	W. J. WALKER	8/32
9/32	W. J. WALKER	9/32
10/32	W. J. WALKER	10/32
11/32	W. J. WALKER	11/32
12/32	W. J. WALKER	12/32
1/33	W. J. WALKER	1/33
2/33	W. J. WALKER	2/33
3/33	W. J. WALKER	3/33
4/33	W. J. WALKER	4/33
5/33	W. J. WALKER	5/33
6/33	W. J. WALKER	6/33
7/33	W. J. WALKER	7/33
8/33	W. J. WALKER	8/33
9/33	W. J. WALKER	9/33
10/33	W. J. WALKER	10/33
11/33	W. J. WALKER	11/33
12/33	W. J. WALKER	12/33
1/34	W. J. WALKER	1/34
2/34	W. J. WALKER	2/34
3/34	W. J. WALKER	3/34
4/34	W. J. WALKER	4/34
5/34	W. J. WALKER	5/34
6/34	W. J. WALKER	6/34
7/34	W. J. WALKER	7/34
8/34	W. J. WALKER	8/34
9/34	W. J. WALKER	9/34
10/34	W. J. WALKER	10/34
11/34	W. J. WALKER	11/34
12/34	W. J. WALKER	12/34
1/35	W. J. WALKER	1/35
2/35	W. J. WALKER	2/35
3/35	W. J. WALKER	3/35
4/35	W. J. WALKER	4/35
5/35	W. J. WALKER	5/35
6/35	W. J. WALKER	6/35
7/35	W. J. WALKER	7/35
8/35	W. J. WALKER	8/35
9/35	W. J. WALKER	9/35
10/35	W. J. WALKER	10/35
11/35	W. J. WALKER	11/35
12/35	W. J. WALKER	12/35
1/36	W. J. WALKER	1/36
2/36	W. J. WALKER	2/36
3/36	W. J. WALKER	3/36
4/36	W. J. WALKER	4/36
5/36	W. J. WALKER	5/36
6/36	W. J. WALKER	6/36
7/36	W. J. WALKER	7/36
8/36	W. J. WALKER	8/36
9/36	W. J. WALKER	9/36
10/36	W. J. WALKER	10/36
11/36	W. J. WALKER	11/36
12/36	W. J. WALKER	12/36
1/37	W. J. WALKER	1/37
2/37	W. J. WALKER	2/37
3/37	W. J. WALKER	3/37
4/37	W. J. WALKER	4/37
5/37	W. J. WALKER	5/37
6/37	W. J. WALKER	6/37
7/37	W. J. WALKER	7/37
8/37	W. J. WALKER	8/37
9/37	W. J. WALKER	9/37
10/37	W. J. WALKER	10/37
11/37	W. J. WALKER	11/37
12/37	W. J. WALKER	12/37
1/38	W. J. WALKER	1/38
2/38	W. J. WALKER	2/38
3/38	W. J. WALKER	3/38
4/38	W. J. WALKER	4/38
5/38	W. J. WALKER	5/38
6/38	W. J. WALKER	6/38
7/38	W. J. WALKER	7/38
8/38	W. J. WALKER	8/38
9/38	W. J. WALKER	9/38
10/38	W. J. WALKER	10/38
11/38	W. J. WALKER	11/38
12/38	W. J. WALKER	12/38
1/39	W. J. WALKER	1/39
2/39	W. J. WALKER	2/39
3/39	W. J. WALKER	3/39
4/39	W. J. WALKER	4/39
5/39	W. J. WALKER	5/39
6/39	W. J. WALKER	6/39
7/39	W. J. WALKER	7/39
8/39	W. J. WALKER	8/39
9/39	W. J. WALKER	9/39
10/39	W. J. WALKER	10/39
11/39	W. J. WALKER	11/39
12/39	W. J. WALKER	12/39
1/40	W. J. WALKER	1/40
2/40	W. J. WALKER	2/40
3/40	W. J. WALKER	3/40
4/40	W. J. WALKER	4/40
5/40	W. J. WALKER	5/40
6/40	W. J. WALKER	6/40
7/40	W. J. WALKER	7/40
8/40	W. J. WALKER	8/40
9/40	W. J. WALKER	9/40
10/40	W. J. WALKER	10/40
11/40	W. J. WALKER	11/40
12/40	W. J. WALKER	12/40
1/41	W. J. WALKER	1/41
2/41	W. J. WALKER	2/41
3/41	W. J. WALKER	3/41
4/41	W. J. WALKER	4/41
5/41	W. J. WALKER	5/41
6/41	W. J. WALKER	6/41
7/41	W. J. WALKER	7/41
8/41	W. J. WALKER	8/41
9/41	W. J. WALKER	9/41
10/41	W. J. WALKER	10/41
11/41	W. J. WALKER	11/41
12/41	W. J. WALKER	12/41
1/42	W. J. WALKER	1/42
2/42	W. J. WALKER	2/42
3/42	W. J. WALKER	3/42
4/42	W. J. WALKER	4/42
5/42	W. J. WALKER	5/42
6/42	W. J. WALKER	6/42
7/42	W. J. WALKER	7/42
8/42	W. J. WALKER	8/42
9/42	W. J. WALKER	9/42
10/42	W. J. WALKER	10/42
11/42	W. J. WALKER	11/42
12/42	W. J. WALKER	12/42
1/43	W. J. WALKER	1/43
2/43	W. J. WALKER	2/43
3/43	W. J. WALKER	3/43
4/43	W. J. WALKER	4/43
5/43	W. J. WALKER	5/43
6/43	W. J. WALKER	6/43
7/43	W. J. WALKER	7/43
8/43	W. J. WALKER	8/43
9/43	W. J. WALKER	9/43
10/43	W. J. WALKER	10/43
11/43	W. J. WALKER	11/43
12/43	W. J. WALKER	12/43
1/44	W. J. WALKER	1/44
2/44	W. J. WALKER	2/44
3/44	W. J. WALKER	3/44
4/44	W. J. WALKER	4/44
5/44	W. J. WALKER	5/44
6/44	W. J. WALKER	6/44
7/44	W. J. WALKER	7/44
8/44	W. J. WALKER	8/44
9/44	W. J. WALKER	9/44
10/44	W. J. WALKER	10/44
11/44	W. J. WALKER	11/44
12/44	W. J. WALKER	12/44
1/45	W. J. WALKER	1/45
2/45	W. J. WALKER	2/45
3/45	W. J. WALKER	3/45
4/45	W. J. WALKER	4/45
5/45	W. J. WALKER	5/45
6/45	W. J. WALKER	6/45
7/45	W. J. WALKER	7/45
8/45	W. J. WALKER	8/45
9/45	W. J. WALKER	9/45
10/45	W. J. WALKER	10/45
11/45	W. J. WALKER	11/45
12/45	W. J. WALKER	12/45
1/46	W. J. WALKER	1/46
2/46	W. J. WALKER	2/46
3/46	W. J. WALKER	3/46
4/46	W. J. WALKER	4/46
5/46	W. J. WALKER	5/46
6/46	W. J. WALKER	6/46
7/46	W. J. WALKER	7/46
8/46	W. J. WALKER	8/46
9/46	W. J. WALKER	9/46
10/46	W. J. WALKER	10/46
11/46	W. J. WALKER	11/46
12/46	W. J. WALKER	12/46
1/47	W. J. WALKER	1/47
2/47	W. J. WALKER	2/47
3/47	W. J. WALKER	3/47
4/47	W. J. WALKER	4/47
5/47	W. J. WALKER	5/47
6/47	W. J. WALKER	6/47
7/47	W. J. WALKER	7/47
8/47	W. J. WALKER	8/47
9/47	W. J. WALKER	9/47
10/47	W. J. WALKER	10/47
11/47	W. J. WALKER	11/47
12/47	W. J. WALKER	12/47
1/48	W. J. WALKER	1/48
2/48	W. J. WALKER	2/48
3/48	W. J. WALKER	3/48
4/48	W. J. WALKER	4/48
5/48	W. J. WALKER	5/48
6/48	W. J. WALKER	6/48
7/48	W. J. WALKER	7/48
8/48	W. J. WALKER	8/48
9/48	W. J. WALKER	9/48
10/48	W. J. WALKER	10/48
11/48	W. J. WALKER	11/48
12/48	W. J. WALKER	12/48
1/49	W. J. WALKER	1/49
2/49	W. J. WALKER	2/49
3/49	W. J. WALKER	3/49
4/49	W. J. WALKER	4/49
5/49	W. J. WALKER	5/49
6/49	W. J. WALKER	6/49
7/49	W. J. WALKER	7/49
8/49	W. J. WALKER	8/49
9/49	W. J. WALKER	9/49
10/49	W. J. WALKER	10/49
11/49	W. J. WALKER	11/49
12/49	W. J. WALKER	12/49
1/50	W. J. WALKER	1/50
2/50	W. J. WALKER	2/50
3/50	W. J. WALKER	3/50
4/50	W. J. WALKER	4/50
5/50	W. J. WALKER	5/50
6/50	W. J. WALKER	6/50
7/50	W. J. WALKER	7/50
8/50	W. J. WALKER	8/50
9/50	W. J. WALKER	9/50
10/50	W. J. WALKER	10/50
11/50	W. J. WALKER	11/50
12/50	W. J. WALKER	12/50

PROFILE	DATE	BY
6/23	SPALLONE	6/23
7/23	W. J. WALKER	7/23
8/23	W. J. WALKER	8/23
9/23	W. J. WALKER	9/23
10/23	W. J. WALKER	10/23
11/23	W. J. WALKER	11/23
12/23	W. J. WALKER	12/23
1/24	W. J. WALKER	1/24
2/24	W. J. WALKER	2/24
3/24	W. J. WALKER	3/24
4/24	W. J. WALKER	4/24
5/24	W. J. WALKER	5/24
6/24	W. J. WALKER	6/24
7/24	W. J. WALKER	7/24
8/24	W. J. WALK	



PLAN

DATE	6/23
SCALE	AS SHOWN
PROJECT	ROADWAY
NO.	211(6)
SHEET	OF 10

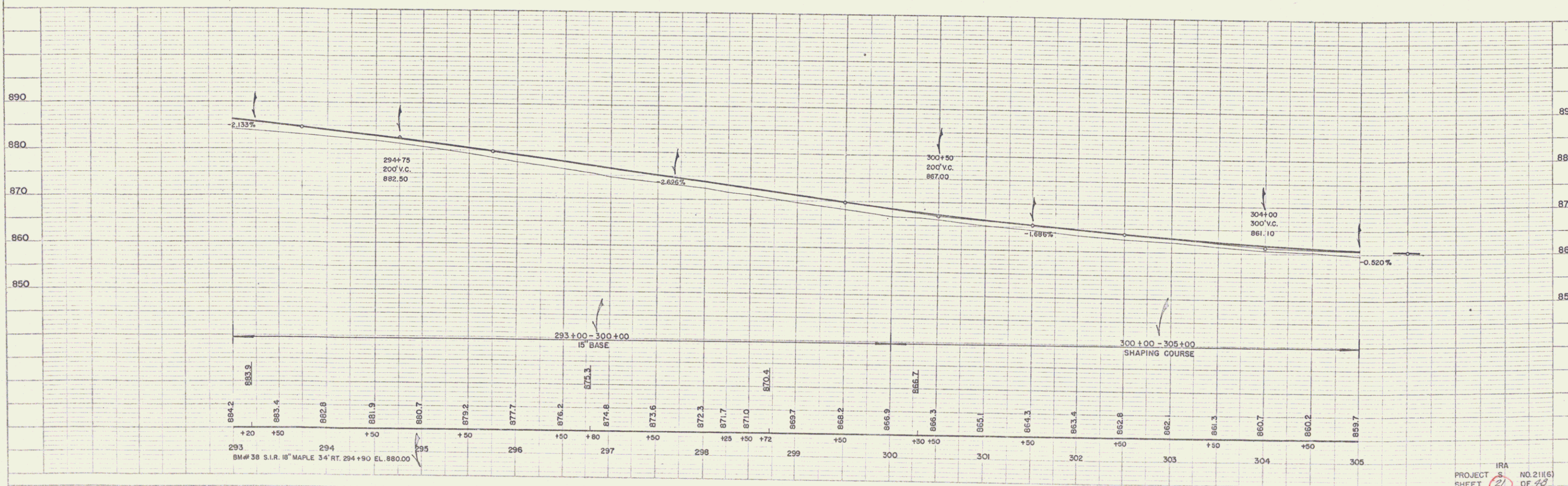
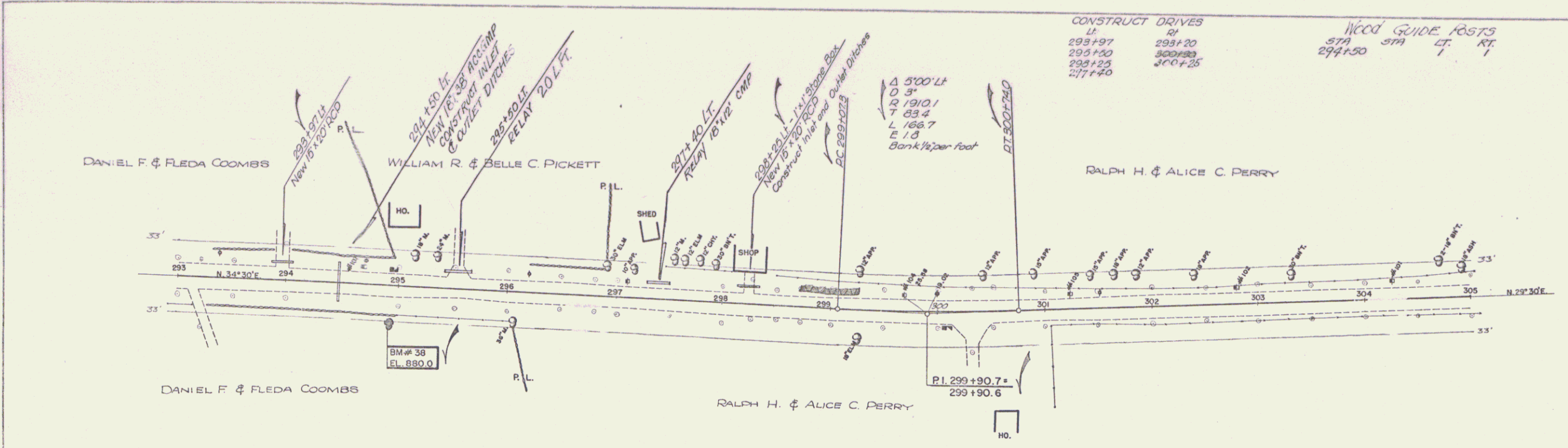
PROFILE

DATE	6/23
SCALE	AS SHOWN
PROJECT	ROADWAY
NO.	211(6)
SHEET	OF 10

PROJECT NO. 211(6)
 SHEET 6 OF 10

PLAN
 DATE: 6/13
 DRAWN BY: N. HARR
 CHECKED BY: J.L.
 PROJECT NO.: 21116

PROFILE
 DATE: 7/13
 DRAWN BY: J.L.
 CHECKED BY: J.L.
 PROJECT NO.: 21116



PROJECT SHEET 21 OF 43
 NO. 211(6)
 IRA

