

INDEX OF SHEETS

| | |
|-----------|---|
| SHEET NO. | 1 - LAYOUT SHEET |
| 2 | TYPICAL SECTIONS (21' GRAVEL ROADWAY) |
| 3 | DETAILS OF BANKING |
| 4 | STANDARD STRUCTURES 520 (PIPE CULVERTS) |
| 5 | STANDARD STRUCTURES 522 (GUARD RAIL) |
| 6-8 | CROSS SECTION SHEETS |

NEW CORRUGATED METAL PIPE CULVERTS REQUIRED

| STATION | SIZE | LENGTH | CEN. RADIUS MAX. |
|---------|------|--------|------------------|
| 7+30 | 12" | 52' | 2.3 x-y |

WOOD GUARD RAIL REQUIRED

| STATION | LEFT | RIGHT |
|---------|------|-------|
| 7+30 | | 24' |

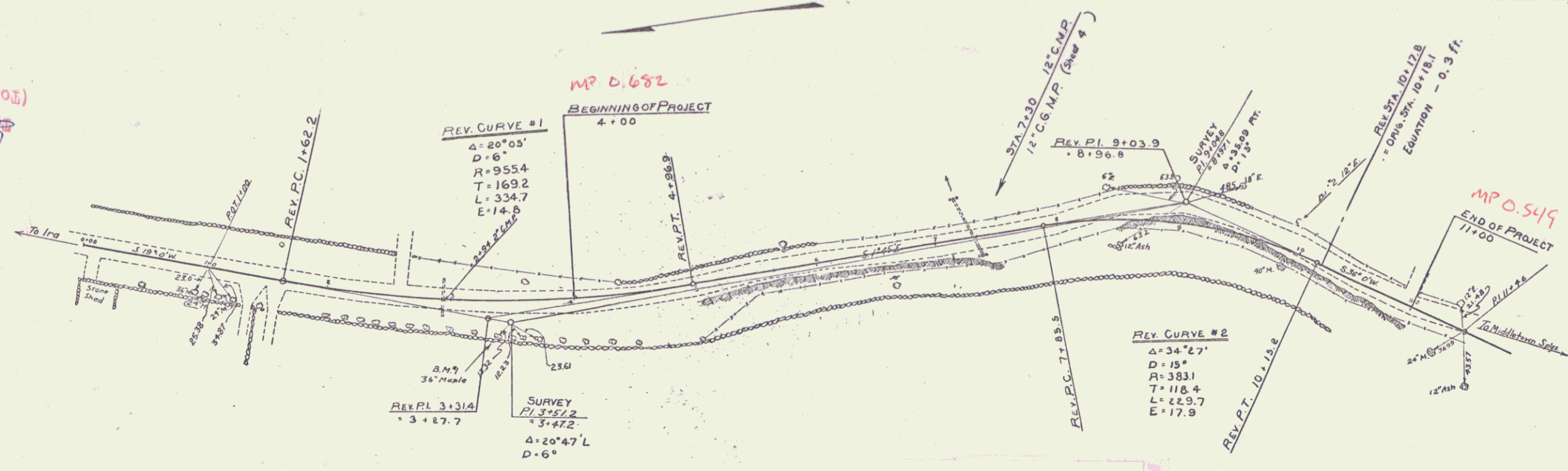
CABLE GUARD RAIL REQUIRED

| STATION | LENS | CONST. | PATLNS |
|------------------|-------|--------|--------|
| 4+40 - 2+68 LT. | 4'24" | 40' | 4'64" |
| 3+35 - 10+59 LT. | 104' | 40' | 144' |

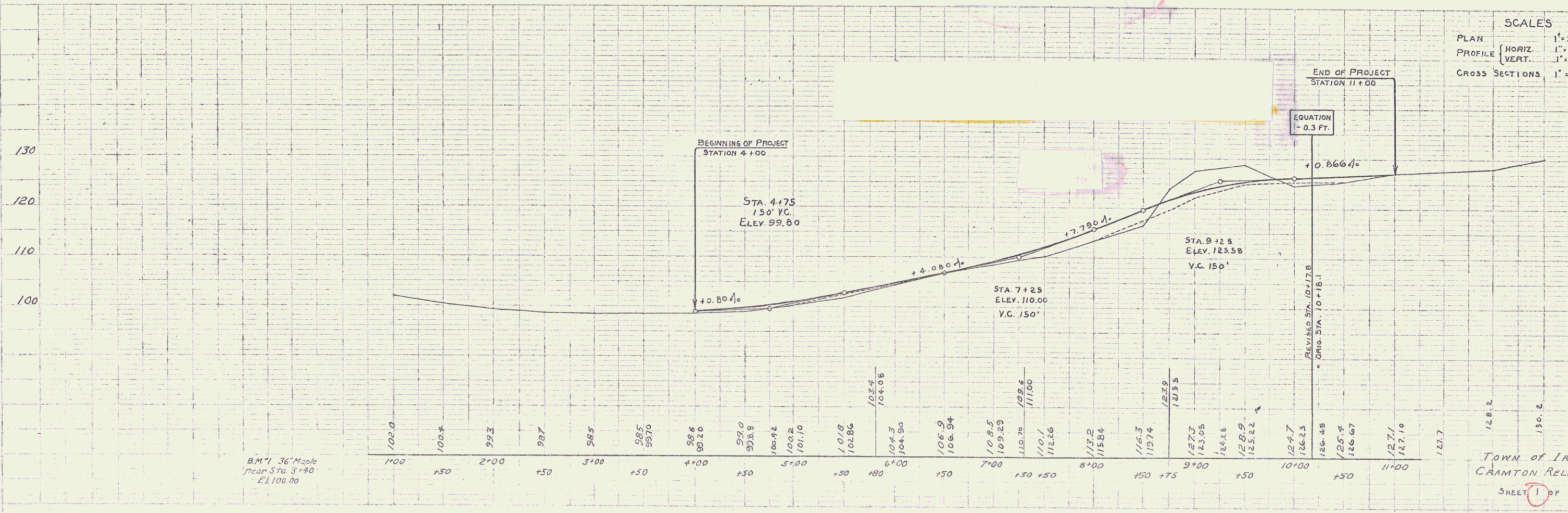
TOWN OF IRA
 Project Cranton Relocation
 Pin # 99R665
 Route VT133
 Date 6/1/1931

S.E. Putnam
A.C. Flender

HIGH-OF-WAY DIVISION
 TOWN FILE
 PERMITAL
 VT 133
 (To Be Returned To R.O.W. Division)



S.E. Putnam
A.C. Flender



SCALES
 PLAN 1" = 50'
 PROFILE HORIZ. 1" = 50', VERT. 1" = 10'
 CROSS SECTIONS 1" = 5'