

INDEX OF SHEETS

SHEET NO.	1 - LAYOUT SHEET
2	TYPICAL SECTIONS (21' GRAVEL ROADWAY)
3	DETAILS OF BANKING
4	STANDARD STRUCTURES 520 (PIPE CULVERTS)
5	STANDARD STRUCTURES 522 (GUARD RAIL)
6-8	CROSS SECTION SHEETS

NEW CORRUGATED METAL PIPE CULVERTS REQUIRED

STATION	SIZE	LENGTH	CEN. RADIUS MAX.
7+30	12"	52'	2.3 x-y

WOOD GUARD RAIL REQUIRED

STATION	LEFT	RIGHT
7+30		24'

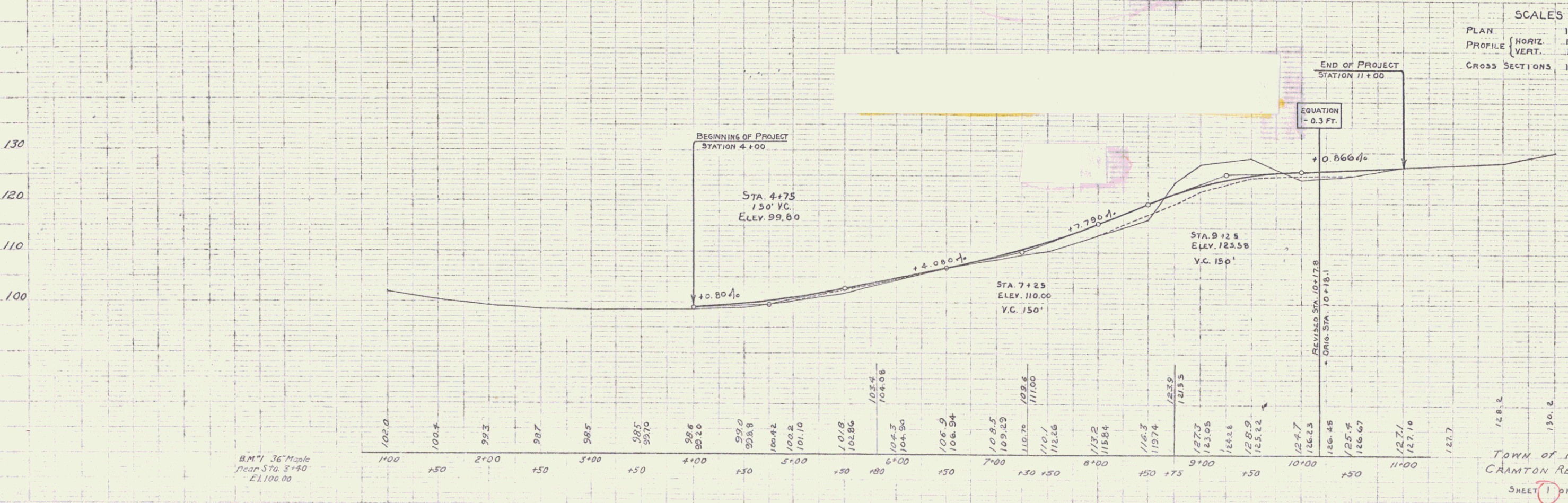
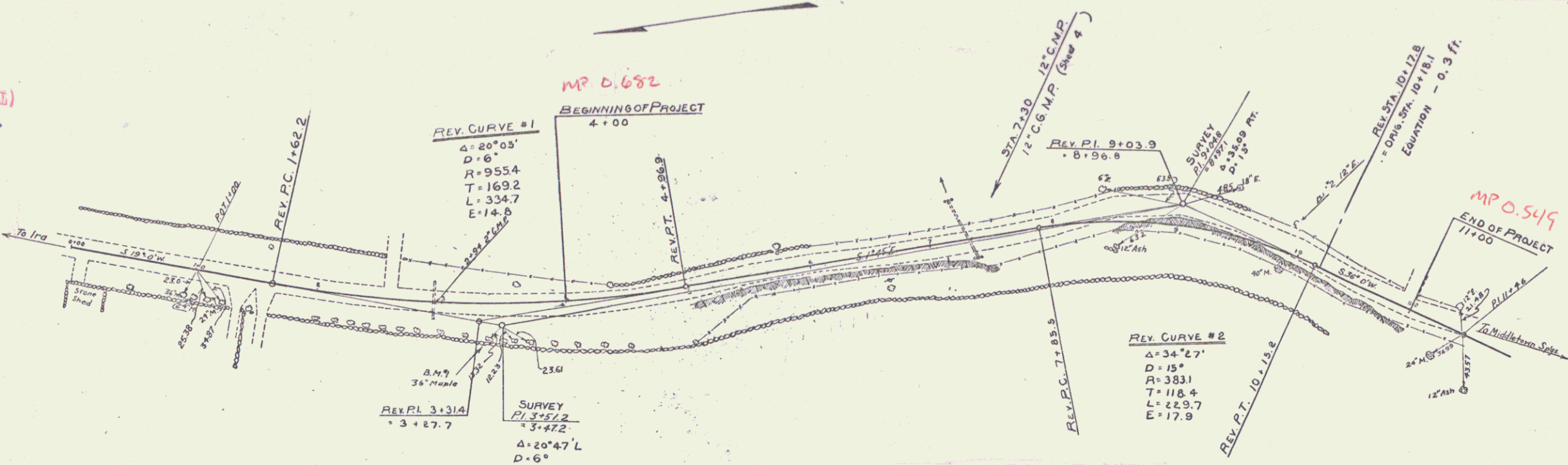
CABLE GUARD RAIL REQUIRED

STATION	LENS	CONST.	PATLNS
4+40 - 2+68 LT.	4'24"	40'	4'64"
3+35 - 10+59 LT.	104'	40'	144'

TOWN OF IRA
 Project Cranton Relocation
 Pin # 99R665
 Route VT133
 Date 6/1/1931

S.E. Putnam
A.C. Flinders

HIGH-OF-WAY DIVISION
 TOWN FILE
 PERMITAL
 VT 133
 (To Be Returned To R.O.W. Division)



B.M. 36" Mark
near Sta. 3+40
E.L. 106.00

TOWN OF IRA
 CRANTON RELOCATION
 SHEET 1 OF 8