

INDEX OF SHEETS

SHEET NO. 1	TITLE PAGE
2	TYPICAL CROSS-SECTION OF IMPROVEMENT STABILIZED GRAVEL BASE COURSE OF OUTBACK ASPHALT WITH SAND SEAL, ITEM 303-B
3	BANKING AND WIDENING TABLES
4	CONSTRUCTION DETAILS DRAINAGE AND MARKERS
5	CONSTRUCTION DETAILS C&I (DITCHES)
6	QUANTITY SHEET (ITEMS AND DRAINAGE)
7-9	EARTHWORK SHEETS
10-17	PLAN AND PROFILE SHEETS
18	STANDARD STRUCTURE SHEET S 40 (BARRICADES, SIGNS AND LIGHTS)
19-40	CROSS SECTIONS

STANDARD STRUCTURE SHEET APPROVED BY THE CHIEF ENGINEER, VERMONT STATE DEPARTMENT OF HIGHWAYS.
S 40 JUNE 10 1950

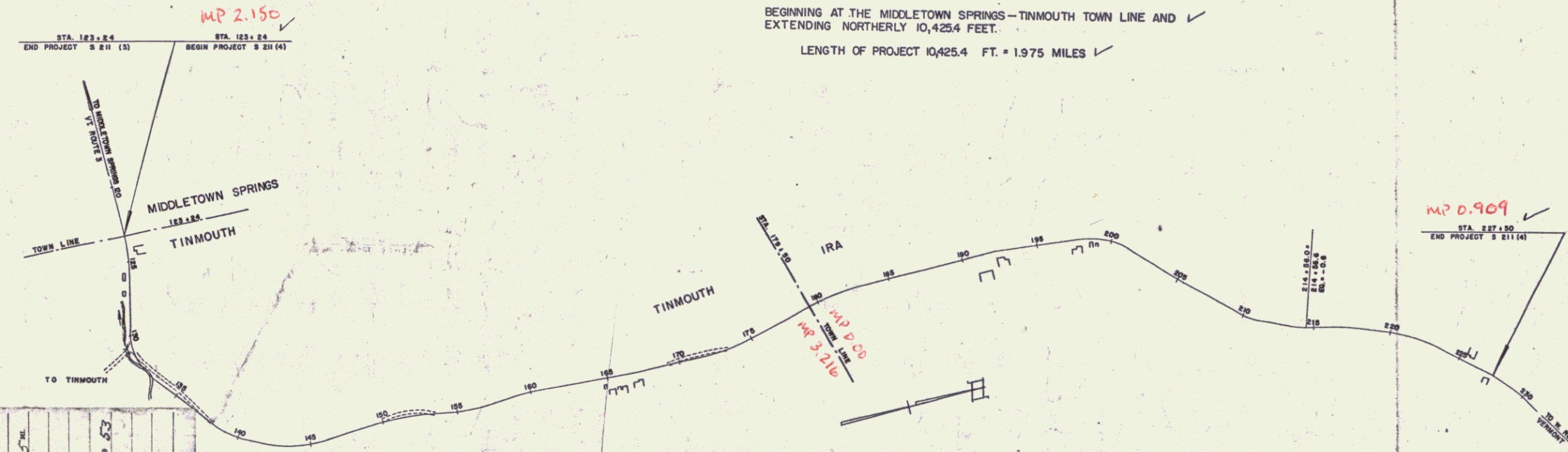
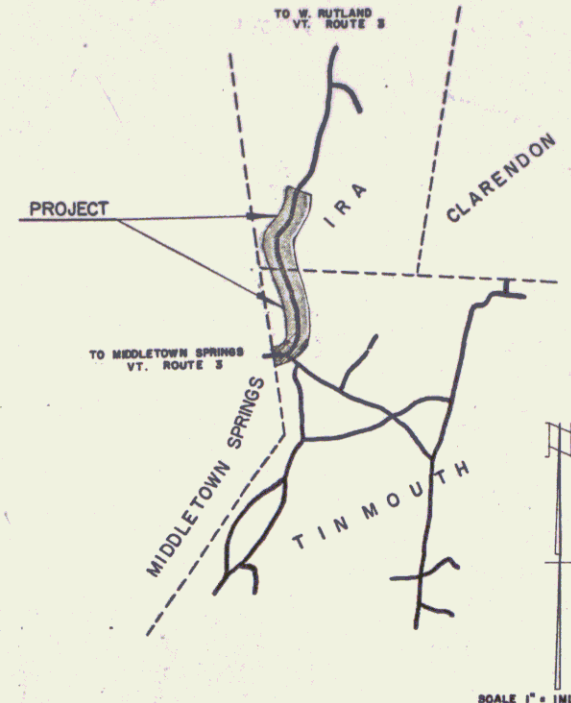
**STATE OF VERMONT
STATE HIGHWAY DEPARTMENT**

**PLAN AND PROFILE OF PROPOSED
STATE HIGHWAY**

SECONDARY PROJECT
TOWNS OF TINMOUTH-IRA
COUNTY OF RUTLAND
VERMONT ROUTE 2
MIDDLETOWN SPRINGS-WEST RUTLAND ROAD

BEGINNING AT THE MIDDLETOWN SPRINGS-TINMOUTH TOWN LINE AND EXTENDING NORTHERLY 10,425.4 FEET.
LENGTH OF PROJECT 10,425.4 FT. = 1.975 MILES

FED. ROAD DIV. NO.	STATE	PROJ. NO.	FISCAL YEAR	SHEET NO.	TOTAL SHEETS
1	VT.	9 211(4)	POST WAR	1	40



RIGHT-OF-WAY DIVISION
TOWN FILE
PERPETUAL
Town of **IRA**
(To Be Returned To R.O.W. Division)

APPROVED: *[Signature]*
CHIEF ENGINEER
SUBMITTED BY ORDER OF THE STATE HIGHWAY BOARD

PROJECT: Tinmouth-Ira
SHEET: S-211(4)
TYPE: Stab. Gr. Base.
CONTRACTOR: W.H. Morse Const. Co.
LOCATION: See Title Sheet.

GROUND ELEVATION DATUM: IRAS
GRADE ELEVATION DATUM: IRAS

CURVE DATA

DEFLECTION ANGLE	Δ
DEGREE OF CURVE	D
RADIUS OF CURVE	R
TANGENT DISTANCE	T
LENGTH OF CURVE	L
EXTERNAL DISTANCE	E
POINT OF INTERSECTION	P. I.
POINT OF CURVE	P. C.
POINT OF TANGENT	P. T.
POINT ON TANGENT	P. O. T.

SCALES

TITLE	1" = 400'
TYPICAL	1" = 2'
PLAN	1" = 50'
PROFILE HORIZONTAL	1" = 80'
PROFILE VERTICAL	1" = 10'
CROSS SECTIONS	1" = 5'

PROJECT NAME & NUMBER	TINMOUTH-IRA S 211 (4)
TYPE	STAB. GR. BASE
PAVEMENT AREA	23,280 S.Y.
RECORD PLANS	
MATERIALS:	
RCP HUDSON FALLS BUILDING & SUPPLY CO.	ACCGMP BERGER MET CULV. CO, WESTMINSTER STA.
SUB-BASE OF GRAVEL WALLACE & NORTON PITS	ASPHALT SOCCONY VACUUM, RIVERSIDE, R. I.
GUIDE POSTS WARNER-GRISWOLD CORP, ESSEX VT.	
CONTRACTOR W. H. MORSE CONST. CO, BENNINGTON, VT.	CONTRACT DATED OCT. 14, 1952
RES. ENGINEER W. V. KALLIO	CONTRACT STARTED OCT. 13, 1952
INSPECTOR R. F. NICHOLSON	CONTRACT COMPLETED AUG. 28, 1953
RECORD PLANS H. A. HEALD	CONTRACT ACCEPTED AUG. 28, 1953

THESE PLANS ARE SUBJECT TO SUCH REVISIONS AS MAY BE REQUIRED BY THE BUREAU OF PUBLIC ROADS OR THE COMMISSIONER OF HIGHWAYS.

CONSTRUCTION IS TO BE CARRIED ON IN ACCORDANCE WITH THE PLANS AND THE STANDARD ROAD AND BRIDGE SPECIFICATIONS OF 1948, AS APPROVED JULY 25 1949 BY THE BUREAU OF PUBLIC ROADS INCLUDING ALL SUBSEQUENT APPROVED REVISIONS AND SUCH REVISED SPECIFICATIONS AND SPECIAL PROVISIONS AS ARE SUBMITTED WITH THE PLANS.

NOTE: ANY FURTHER INFORMATION CONCERNING FINAL QUANTITIES, RECORD PLANS, OR DETAILS RELATIVE TO THIS PROJECT CAN BE OBTAINED EITHER IN THE FIELD OFFICE OR IN THE ESTIMATE FILE.

DEPARTMENT OF COMMERCE
BUREAU OF PUBLIC ROADS
RECOMMENDED FOR APPROVAL

DISTRICT ENGINEER DATE

APPROVED

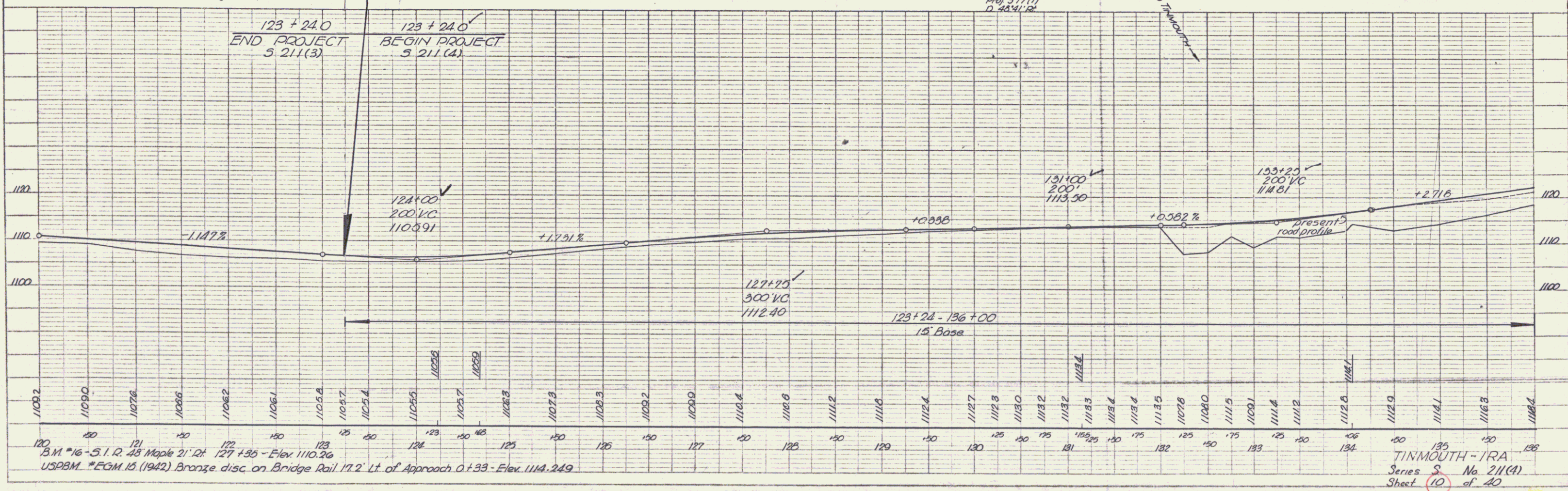
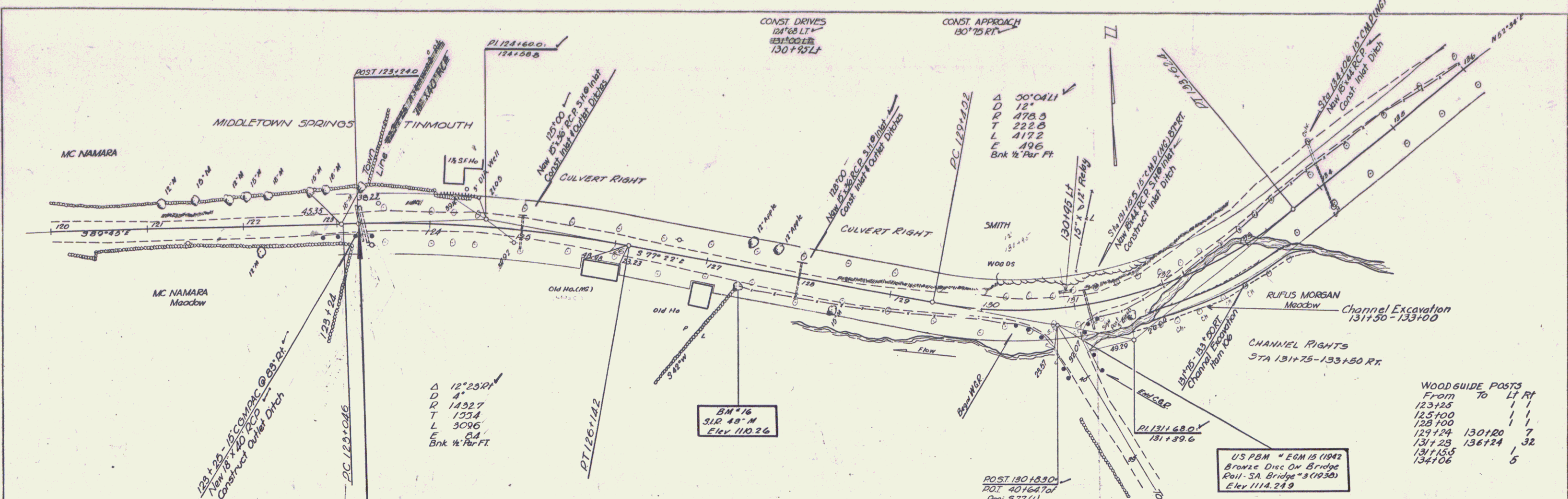
DIVISION ENGINEER DATE

APPROVED: *[Signature]* SECONDARY ENGINEER
APPROVED: *[Signature]* CONSTRUCTION ENGINEER
APPROVED: *[Signature]* HIGHWAY ENGINEER
APPROVED: *[Signature]* DISTRICT ENGINEER

PROJECT S No. 211(4) FILED
SHEET 1 OF 40

PLAN	DATE	BY	CHK	SCALE
DESIGNED	12/15/42	W. J. H.	J. S. R.	1" = 40'
DRAWN				
CHECKED				
APPROVED				
NO. OF SHEETS	10			
SHEET NO.	10			

PROFILE	DATE	BY	CHK	SCALE
DESIGNED	12/15/42	W. J. H.	J. S. R.	1" = 40'
DRAWN				
CHECKED				
APPROVED				
NO. OF SHEETS	10			
SHEET NO.	10			



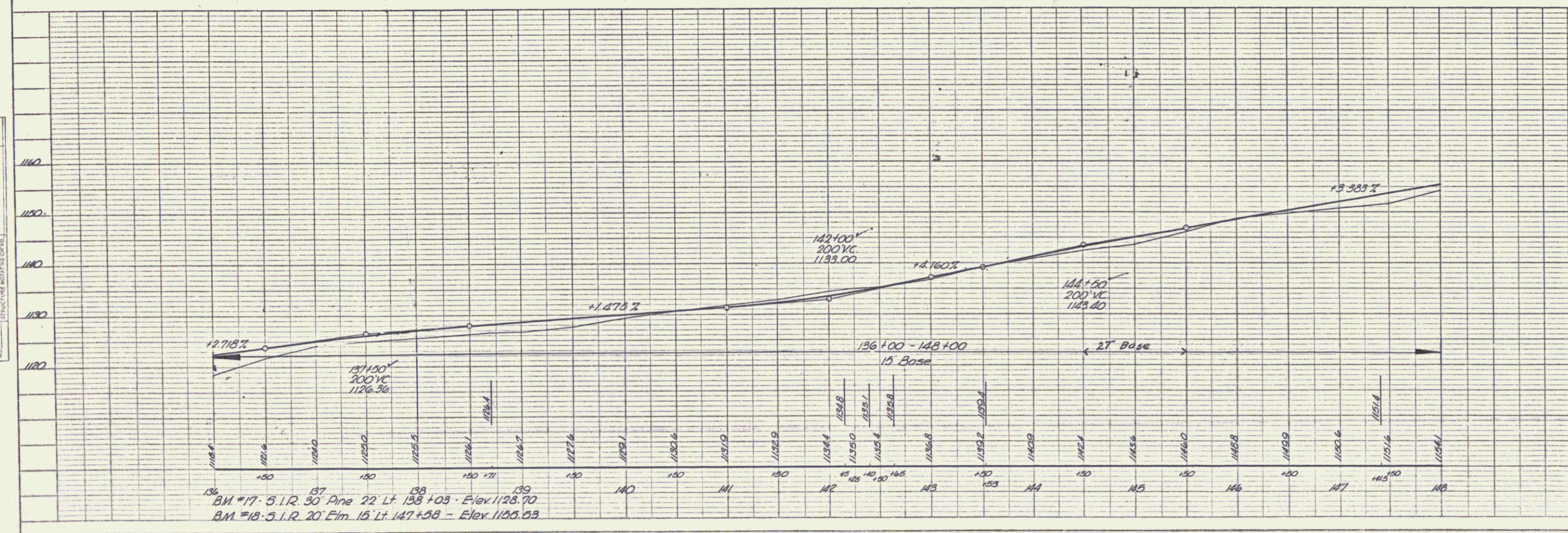
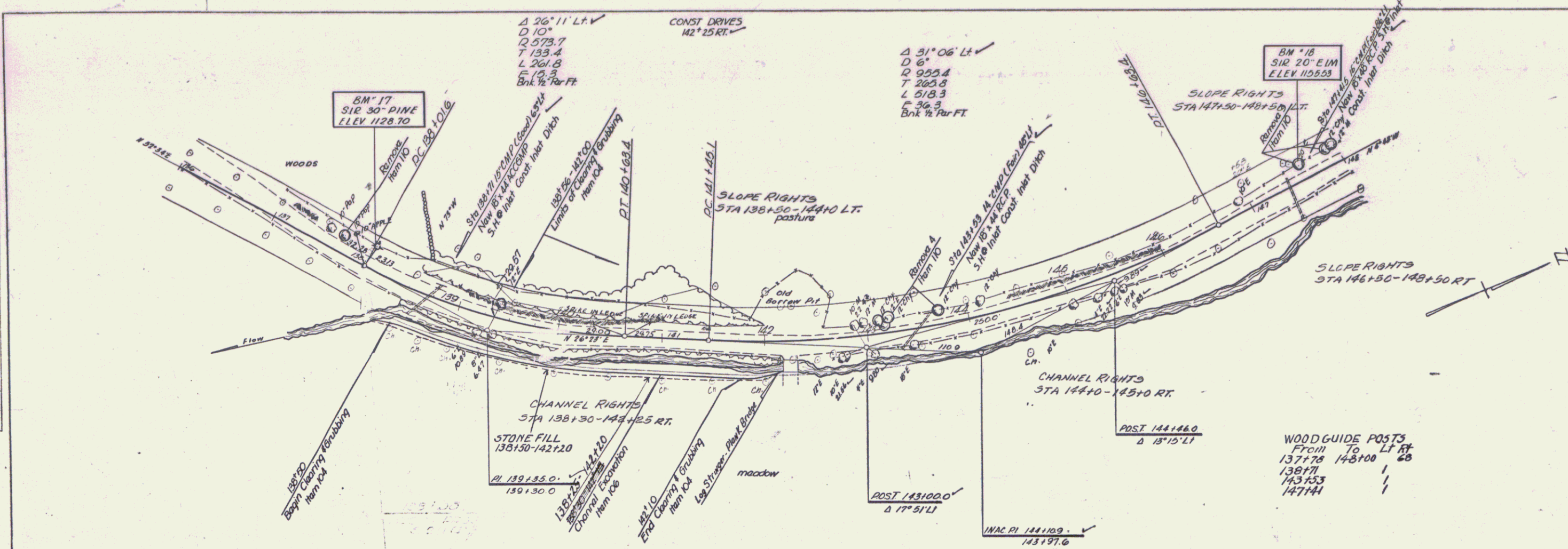
B.M. #16 - S. 1. R. 43 Maple 21' Rt. 127+35 - Elev. 1110.26
 USPB.M. #EGM 15 (1942) Bronze disc on Bridge Rail 17.2' Lt. of Approach 0+33 - Elev. 1114.249

PLATE 1 - PLAN - PROFILE
 KELLY & SPYER CO., NEW YORK
 MADE IN U.S.A.

TINMOUTH - I.R.A.
 Series S No. 211(A)
 Sheet 10 of 40

PLAN	DATE	BY
REVISED		
DATE BOOK		
NO.		
NO.		
NO.		

PROFILE	DATE	BY
REVISED		
DATE BOOK		
NO.		
NO.		
NO.		



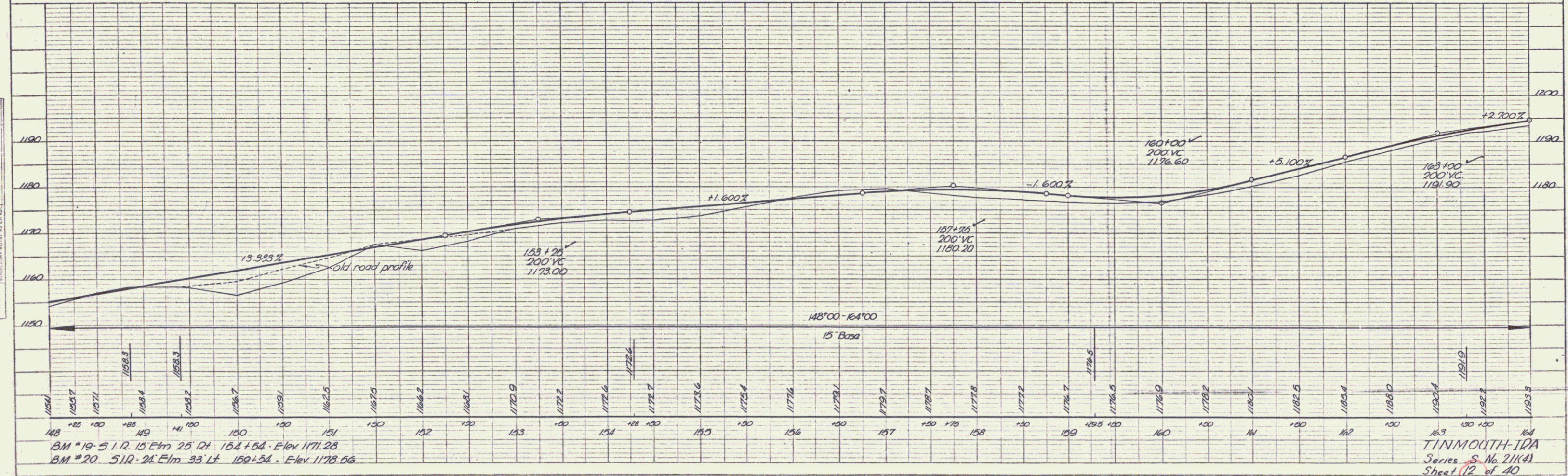
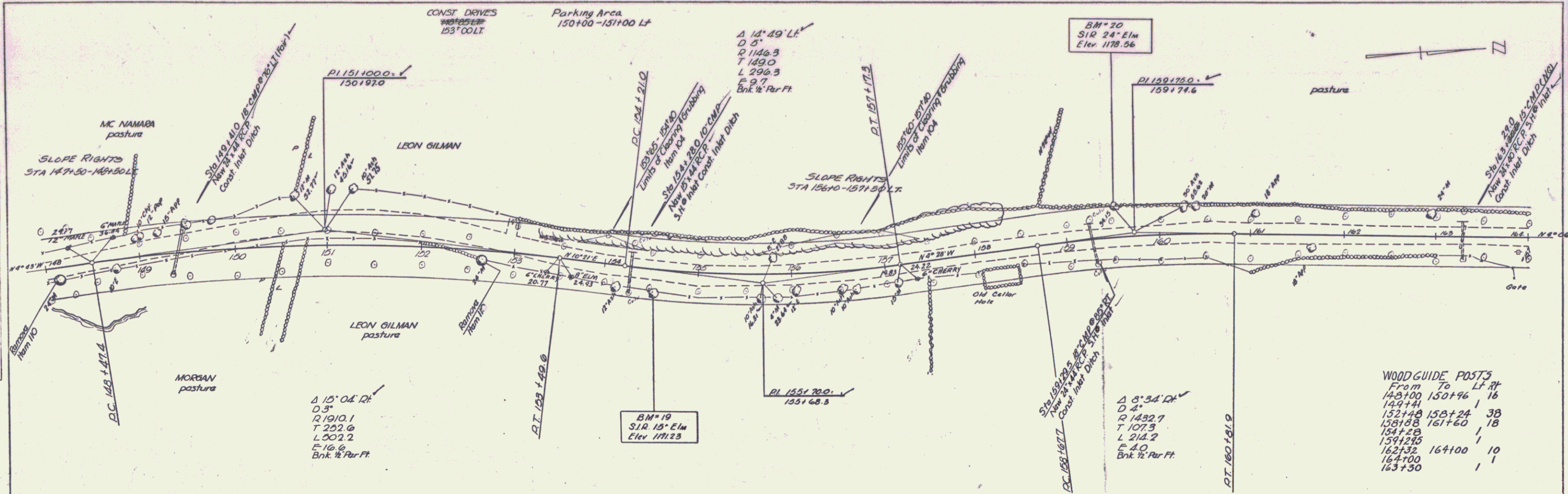
BM #17 - S.I.R. 30' Pine 22' Lt. 138+03 - Elev. 1128.70
 BM #18 - S.I.R. 20' Elm 15' Lt. 147+58 - Elev. 1135.53

TINMOUTH-IRA
 Series S No. 211(4)
 Sheet 11 of 40

PLATE 1 - PLAN-PROFILE OF A.A.A.S. STATIONS
 EDWIN S. BROWN CO., NEW YORK
 P. E. T. CO. INC. 245-C
 MADE IN U.S.A.

PLAN	DATE	BY
REVISIONS		
NO. 1	1/28/54	J.S.
NO. 2	2/10/54	J.S.
NO. 3	3/10/54	J.S.
NO. 4	4/10/54	J.S.
NO. 5	5/10/54	J.S.
NO. 6	6/10/54	J.S.
NO. 7	7/10/54	J.S.
NO. 8	8/10/54	J.S.
NO. 9	9/10/54	J.S.
NO. 10	10/10/54	J.S.
NO. 11	11/10/54	J.S.
NO. 12	12/10/54	J.S.

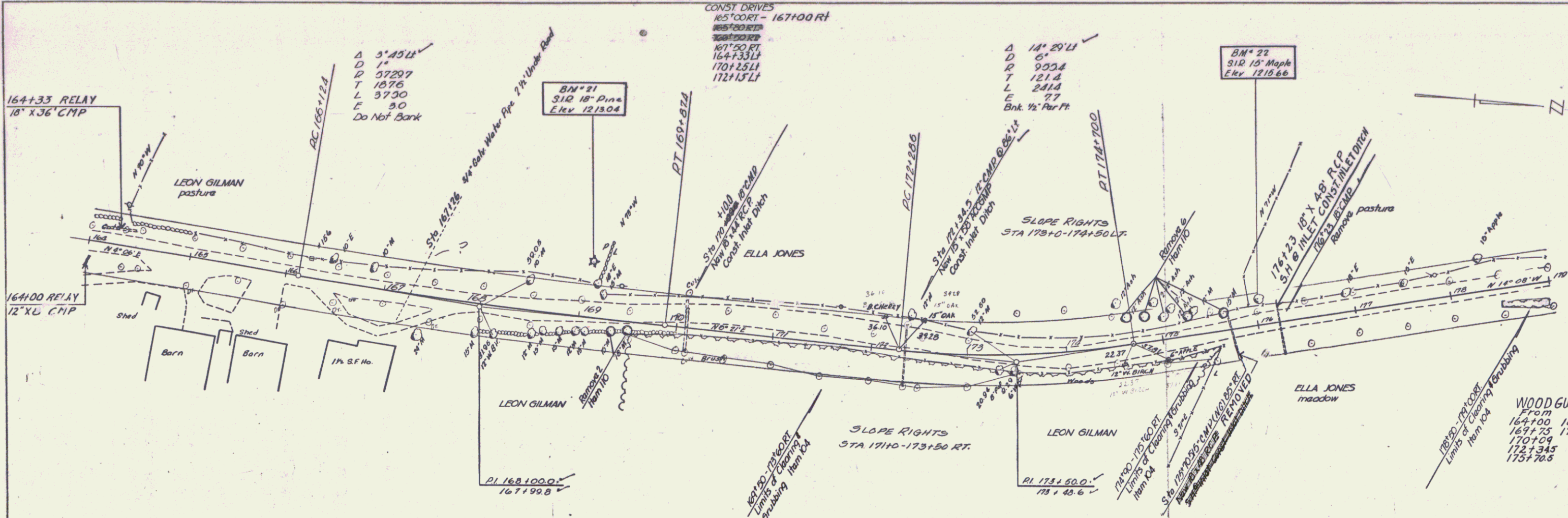
PROFILE	DATE	BY
REVISIONS		
NO. 1	1/28/54	J.S.
NO. 2	2/10/54	J.S.
NO. 3	3/10/54	J.S.
NO. 4	4/10/54	J.S.
NO. 5	5/10/54	J.S.
NO. 6	6/10/54	J.S.
NO. 7	7/10/54	J.S.
NO. 8	8/10/54	J.S.
NO. 9	9/10/54	J.S.
NO. 10	10/10/54	J.S.
NO. 11	11/10/54	J.S.
NO. 12	12/10/54	J.S.



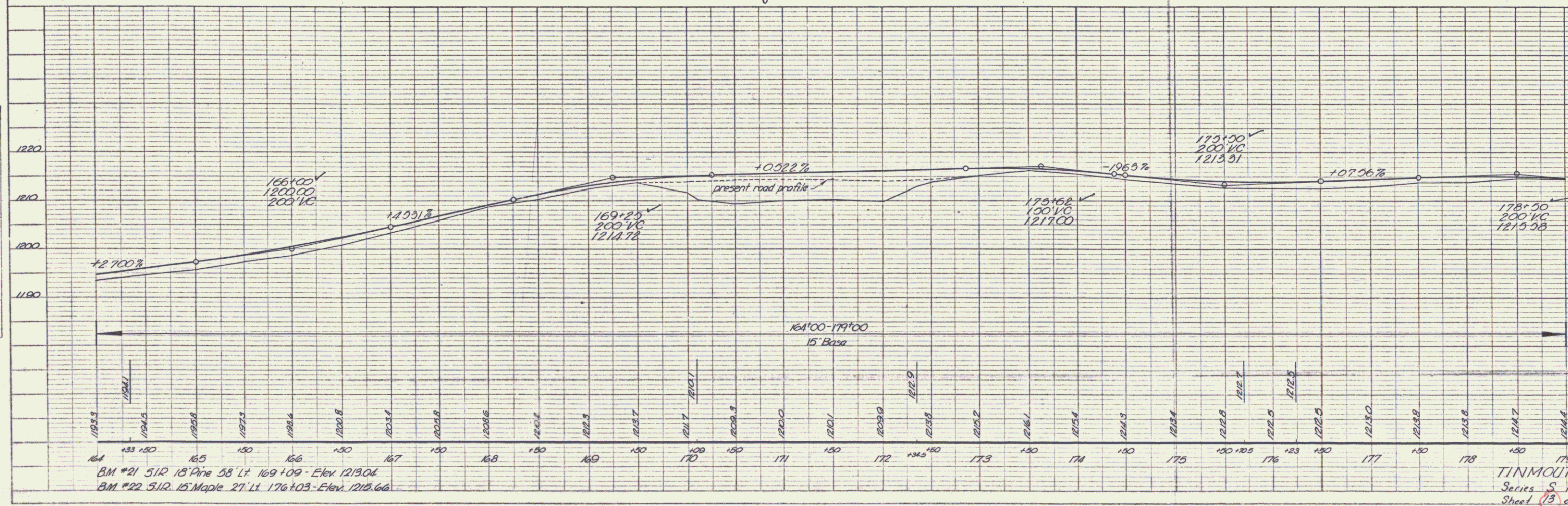
BM #19 - S.I.R. 15' Elm 25' Lt. 154+54 - Elev. 1171.28
 BM #20 - S.I.R. 24' Elm 33' Lt. 159+54 - Elev. 1178.56

TINMOUTH-IRA
 Series S. No. 21(KA)
 Sheet 12 of 40

PLAN
 DATE: 5/17/15
 DRAWN BY: G. G. G.
 CHECKED BY: S. J. H.
 NO. 1

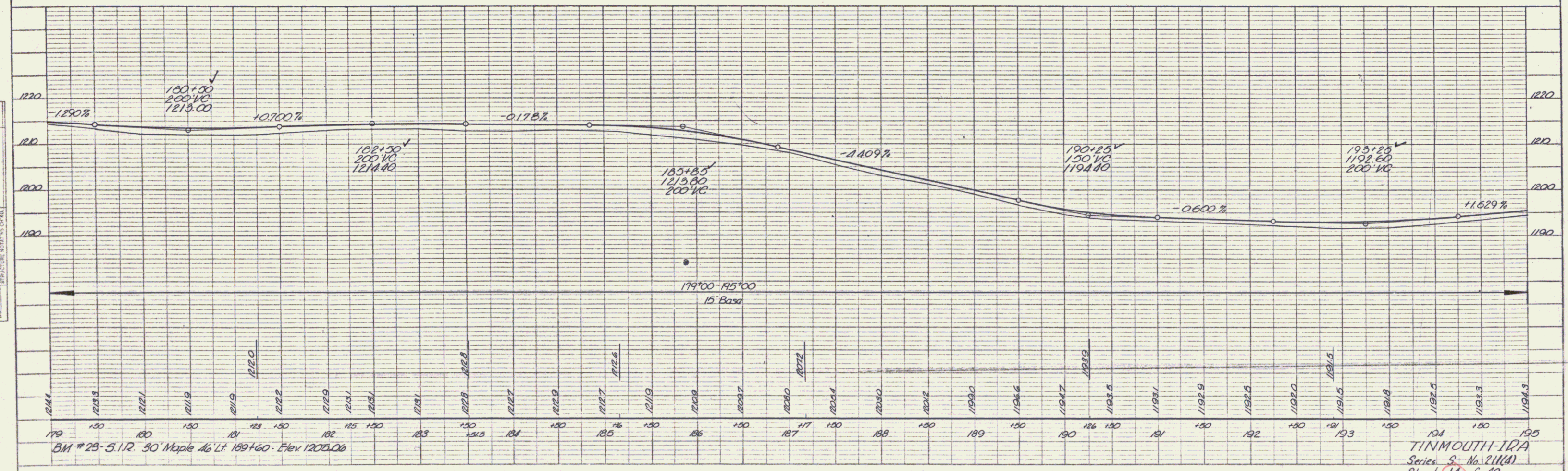
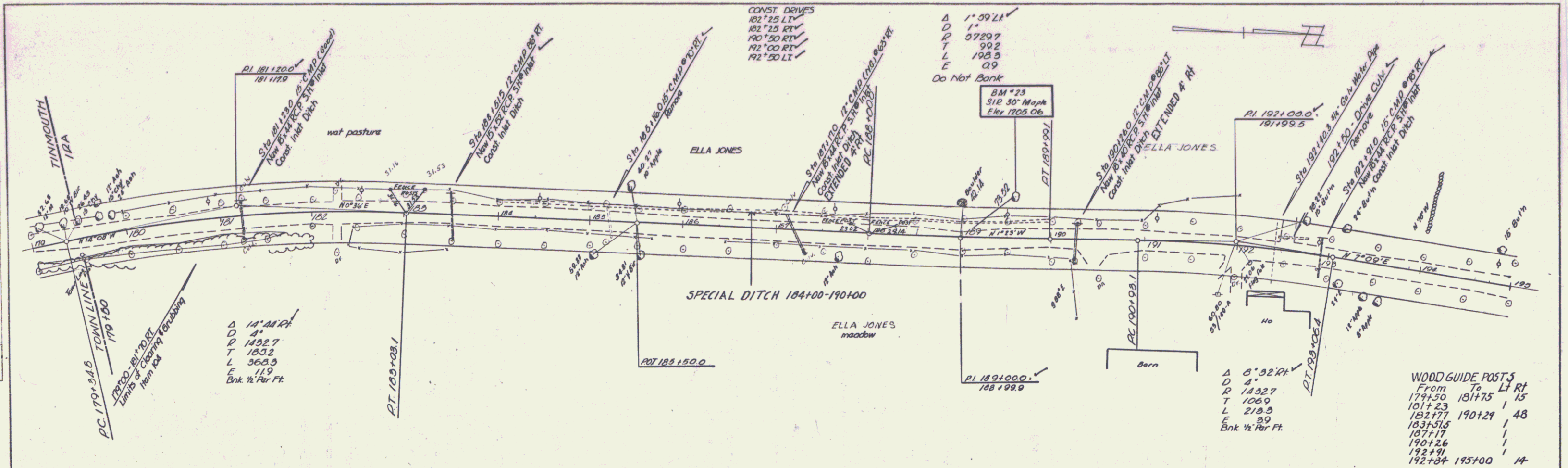


PROFILE
 DATE: 5/17/15
 DRAWN BY: G. G. G.
 CHECKED BY: S. J. H.
 NO. 1



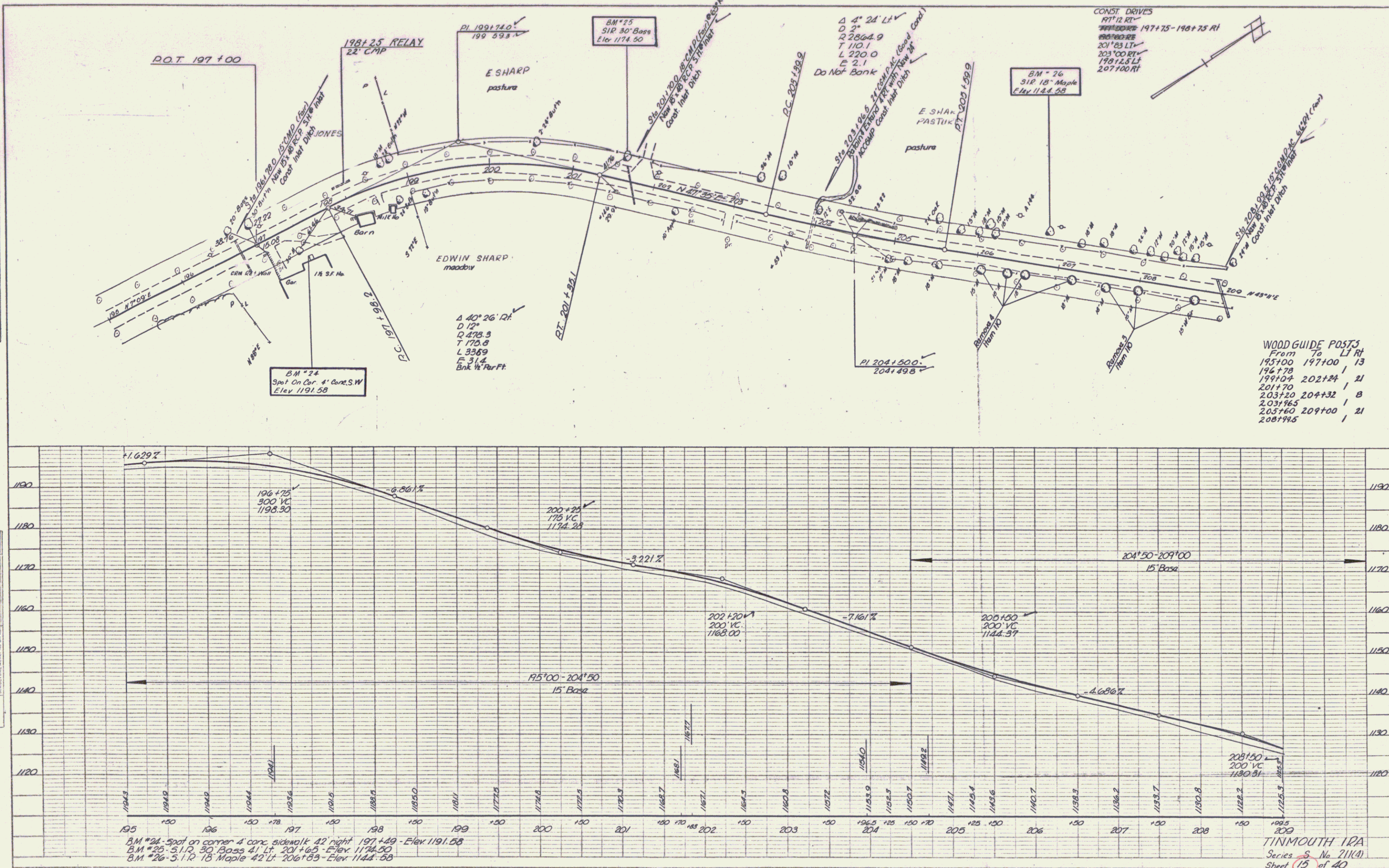
PLAN	DATE	BY
REVISIONS		
NOTE BOOK		
INSTRUMENT CHECKED		
BY		
PROJECT		
NO.		
DATE		
SCALE		
PROJECT		
NO.		
DATE		
SCALE		

PROFILE	DATE	BY
REVISIONS		
NOTE BOOK		
INSTRUMENT CHECKED		
BY		
PROJECT		
NO.		
DATE		
SCALE		



DATE	BY	REVISION
7-2-58	W. J.
7-2-58
7-2-58

NO.	DATE	BY	REVISION
1	7-2-58	W. J.
2
3



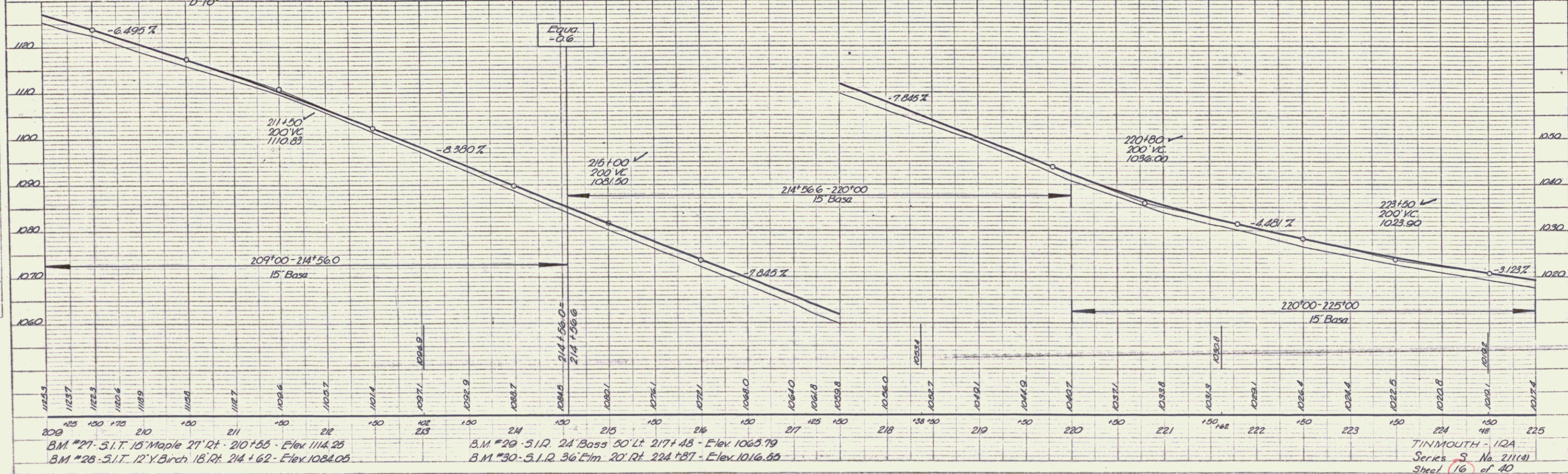
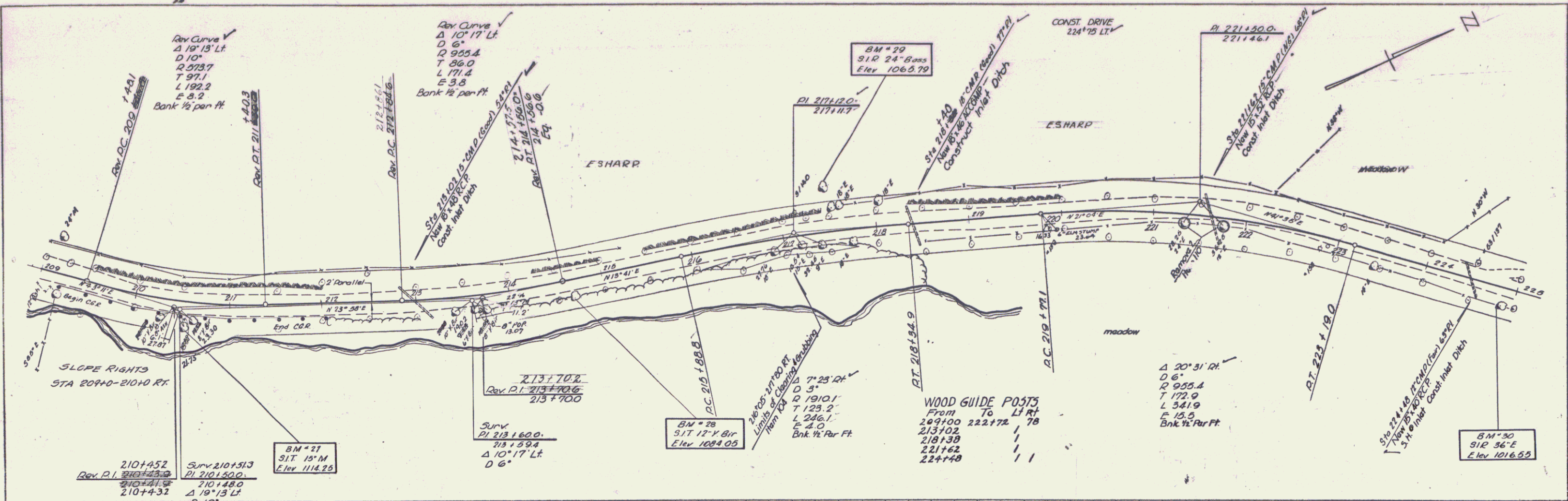
B.M. #24 - Spot on corner 4 conc sidewalk 42' right 197+49 - Elev 1191.58
 B.M. #25 - S. 1/2, 30' Base 41' Lt. 201+65 - Elev 1174.50
 B.M. #26 - S. 1/2, 18' Maple 42' Lt. 206+89 - Elev 1144.58

PLATE 1 - PLAN PROFILE
 TOWN OF ...
 ...

TOWN OF ...
 Series S No. 211(A)
 Sheet 19 of 40

PLAN
 SHEET NO. 16
 DATE 10/15/10
 DRAWN BY [Signature]
 CHECKED BY [Signature]

PROFILE
 SHEET NO. 16
 DATE 10/15/10
 DRAWN BY [Signature]
 CHECKED BY [Signature]



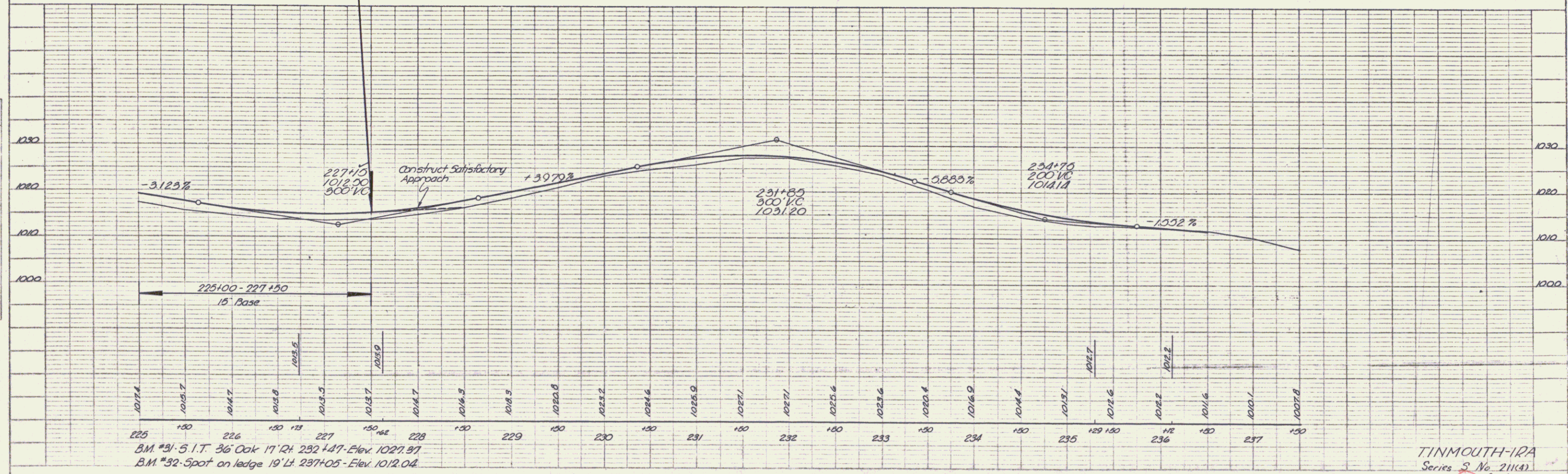
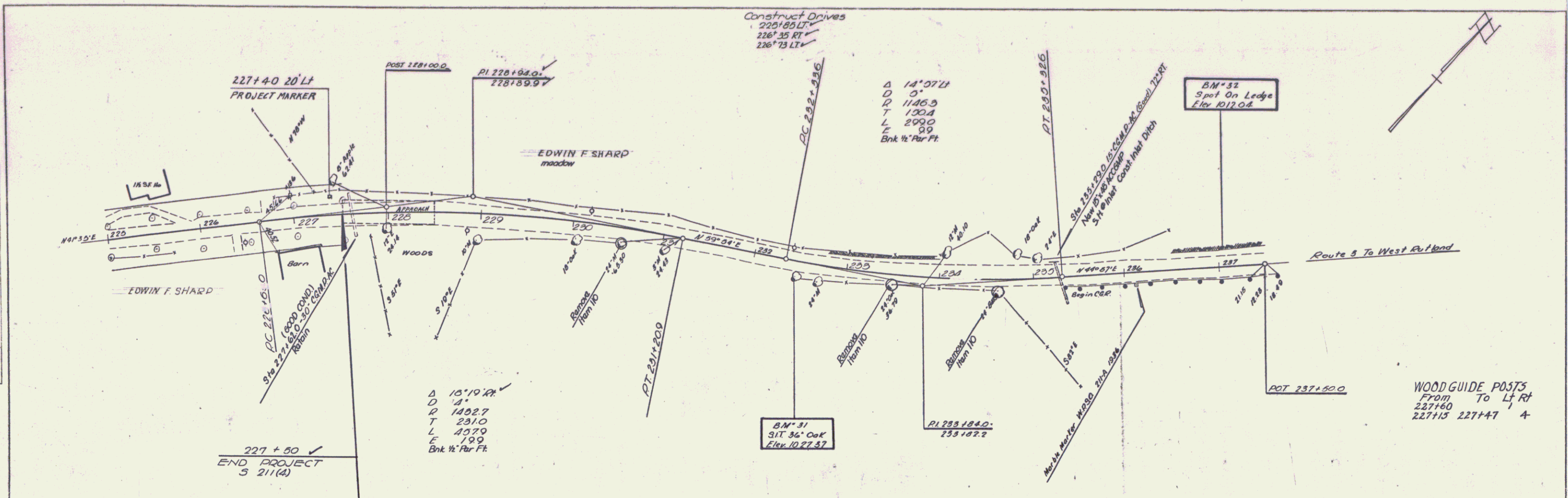
BM #27 - S.I.T. 15' Maple 27' Rt. 210+95 - Elev 1114.25
 BM #28 - S.I.T. 12' Y. Birch 18' Rt. 214+62 - Elev 1084.05

BM #29 - S.I.R. 24' Bass 50' Lt. 217+48 - Elev 1066.79
 BM #30 - S.I.R. 36' Elm 20' Rt. 224+87 - Elev 1016.55

TINMOUTH - 12A
 Series S No. 211(4)
 Sheet 16 of 40

PLAN
 DATE BOOK
 SHEETS

PROFILE
 DATE BOOK
 SHEETS



BM #31 - 5' I.T. 36" Oak 17' 12" 232+47 - Elev. 1027.37
 BM #32 - Spot on ledge 19' 14" 237+05 - Elev. 1012.04

TINMOUTH-IRA
 Series S No. 211(4)
 Sheet 17 of 40