

4-133

INDEX OF SHEETS

SHEET NO.	DESCRIPTION
1	TITLE SHEET
2	TYPICAL CROSS SECTION OF IMPROVEMENT (SINGLE TRACK COAT OF REFINED TAR AND BLADE MIX)
3	QUANTITY SHEET
4	ITEM DETAIL AND DRAINAGE SHEET
5-7	EARTHWORK SHEETS
8	STANDARD SHEET B-1 BANKING TABLES
9	STANDARD SHEET B-5 TYPICAL SLOPE GRADING
10	STANDARD SHEET B-6 MUCK EXCAVATION ITEM 116
11	STANDARD SHEET C-1 TREATED TIMBER CURB ITEM 558
12	STANDARD SHEET D-2 CEMENT RUBBLE MASONRY ITEM 411
13	STANDARD SHEET E-1 BARRICADES, SIGNS, LIGHTS
14	STANDARD SHEET G-2a TWO CABLE GUARD RAIL ITEM 542
15	STANDARD SHEET G-2b DEAD END ANCHORAGE
16	STANDARD SHEET G-4 WOOD GUIDE POST AND MARKER POST ITEM 548A, 548C
17	STANDARD SHEET J-1 PROJECT MARKER ITEM 568
18-24	PLAN AND PROFILE SHEETS
25-26	BANKING TRANSITIONS
27-29	CROSS SECTIONS

PROJECT NAME & NUMBER TYPE PAVEMENT AREA
 MIDDLETOWN SPRINGS S-0139(1) SINGLE TRACK COAT OF REFINED TAR & BLADE MIX PEA STONE SEAL W/6,787 S.Y. CUTBACK ASPHALT.

RECORD PLANS MATERIALS
 SUB BASE OF GRAVEL & GRANULAR BORROW-GEMMELL PIT NO. 1 - MIDDLETOWN SPRINGS, VT.
 REFINED TAR - MORIL OIL CO. - E. PROVIDENCE, R.I.
 CUTBACK ASPHALT - KOEPERS PRODUCTS CO. - E. PROVIDENCE, R.I.
 PEA STONE - WM. E. DAILEY (P.L.A.N.T.) - MANCHESTER, VT.
 REINFORCED CONCRETE PIPE (R.C.P.D.) W/COVERS - VERMONT CONCRETE PIPE CO. - WINDSOR, VT.
 ASPH. CTD. CORR. GALV. METAL PIPE - NORTH EASTERN METAL CULVERT CORP. - WEST WINDSOR, VT.
 TWO CABLE GUARD RAIL, WOOD GUIDE & MARKER POSTS, TREATED TIMBER CURB, BOUNDARY MARKERS - J. H. GRISWOLD CO. INC. - ESSEX JUNCTION, VT.
 CONTRACTOR - WM. E. DAILEY CONTRACT DATED - JULY 25, 1960.
 NO. BENNINGTON, VT. CONTRACT STARTED - AUG. 15, 1960.
 RES. ENG. - EDWARD M. GIBSON JR. CONTRACT COMPLETED - JUN. 20, 1961.
 RECORD PLANS - A. G. SPIDLE. CONTRACT ACCEPTED - JUNE 20, 1961.

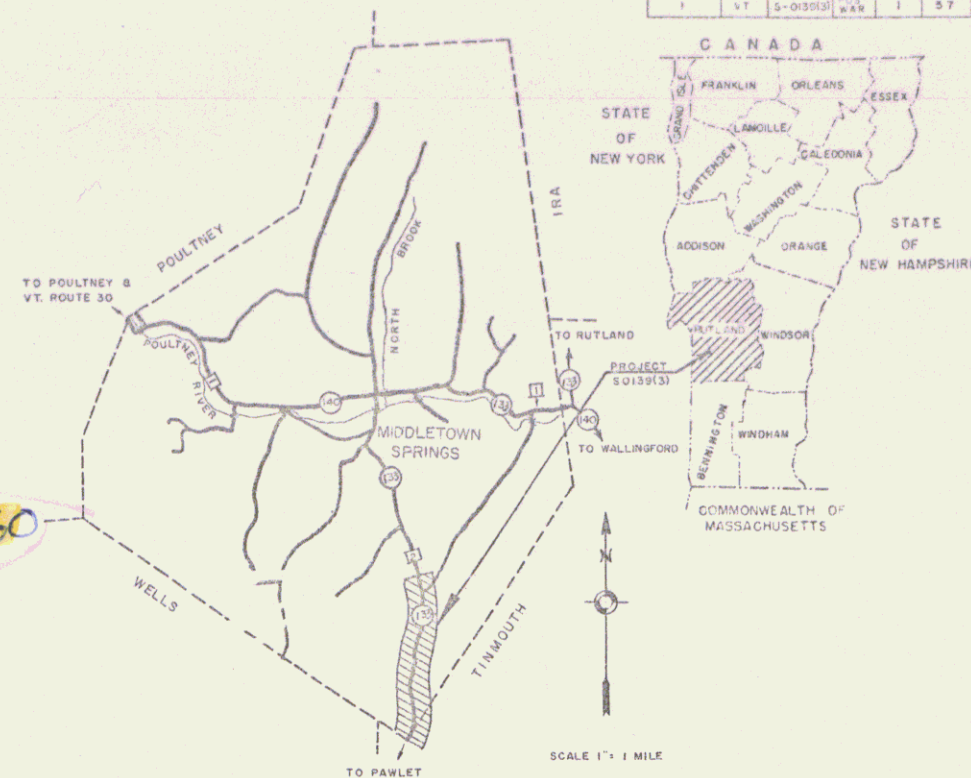
STATE OF VERMONT
 DEPARTMENT OF HIGHWAYS
 PROPOSED IMPROVEMENT

FEDERAL AID SECONDARY

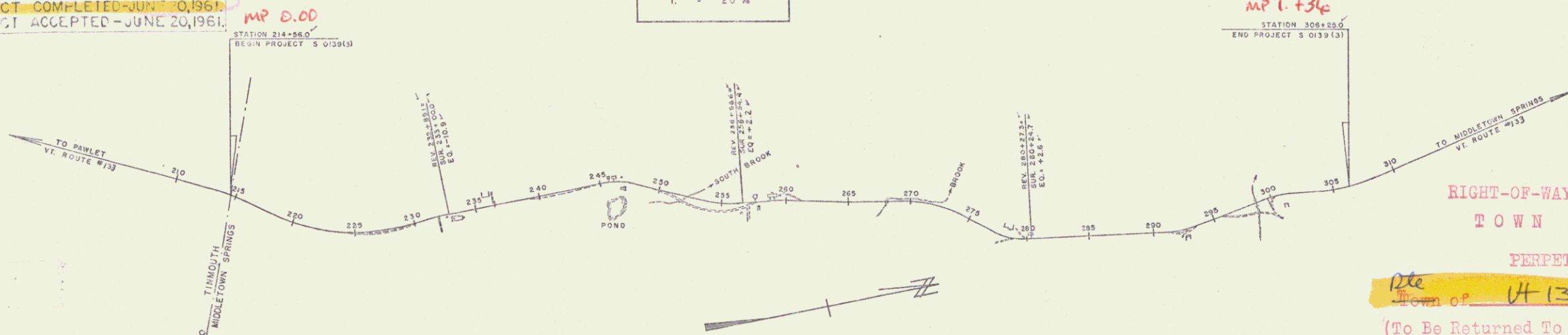
TOWN OF MIDDLETOWN SPRINGS

COUNTY OF RUTLAND
 VERMONT ROUTE #133 P.L.#99R660

PAWLET - MIDDLETOWN SPRINGS ROAD
 BEGINNING AT THE TINMOUTH - MIDDLETOWN SPRINGS TOWN LINE
 AND EXTENDING NORTHERLY 9162.9 FT.
 LENGTH OF ROADWAY 9162.9 FEET = 1.735 MILES



1958 ADT = 120
1975 ADT = 180
1975 D.V. = 55
V = 40 MPH
D = 55%
T = 20%



RIGHT-OF-WAY DIVISION
 TOWN FILE
 PERPETUAL

pte
 4-133 S.A
 (To Be Returned To R.O.W. Division)

CONTRACTOR'S SPECIFICATIONS
 MIDDLETOWN SPRINGS, VT.
 S 0139(1)
 SINGLE TRACK COAT OF REFINED TAR & BLADE MIX
 PEA STONE SEAL W/ CUTBACK ASPHALT.
 CONTRACTOR - WM. E. DAILEY
 NO. BENNINGTON, VT.
 Beginning of the Tinmouth-Middletown Springs Town Line and extending northerly 9,162.9 feet.

RECORD PLANS - A. G. SPIDLE
 CONTRACT COMPLETED - JUNE 20, 1961.

BENCH LEVELS ON THIS PROJECT ARE BASED ON U.S.G.S. MEAN SEA LEVEL DATUM AND ARE REFERENCED TO U.S.G.S. P.B.M.TT II LJD 1942, LOCATED IN MIDDLETOWN SPRINGS VILLAGE.

NOTE: ANY FURTHER INFORMATION CONCERNING FINAL QUANTITIES, AMOUNTS OR OTHER DETAILS RELATIVE TO THIS PROJECT MAY BE FOUND IN EITHER THE FIELD BOOKS OR THE ESTIMATE FILE.

SCALES

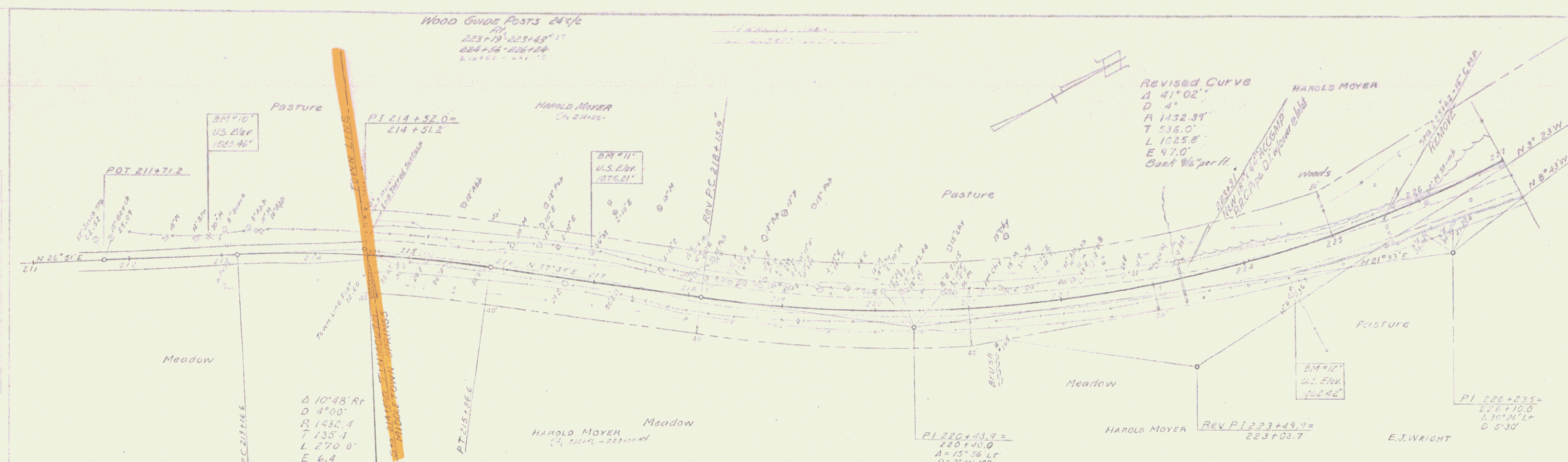
TITLE	1" = 500'
TYPICAL	1" = 2'
PLAN	1" = 50'
PROFILE HORIZONTAL	1" = 50'
PROFILE VERTICAL	1" = 10'
CROSS-SECTIONS	1" = 5'

THESE PLANS ARE SUBJECT TO SUCH REVISIONS AS MAY BE REQUIRED BY THE BUREAU OF PUBLIC ROADS OR THE COMMISSIONER OF HIGHWAYS.
 CONSTRUCTION IS TO BE CARRIED ON IN ACCORDANCE WITH THE P.L. AND THE STANDARD SPECIFICATIONS FOR HIGHWAY AND BRIDGE CONSTRUCTION OF JANUARY 1956 SUBMITTED TO THE BUREAU OF PUBLIC ROADS AS APPROVED JULY 5, 1958, INCLUDING ALL SUBSEQUENT APPROVED REVISIONS AND SUCH REVISED SPECIFICATIONS AND SPECIAL PROVISIONS AS ARE SUBMITTED WITH THE PLANS.

DEPARTMENT OF COMMERCE
 BUREAU OF PUBLIC ROADS

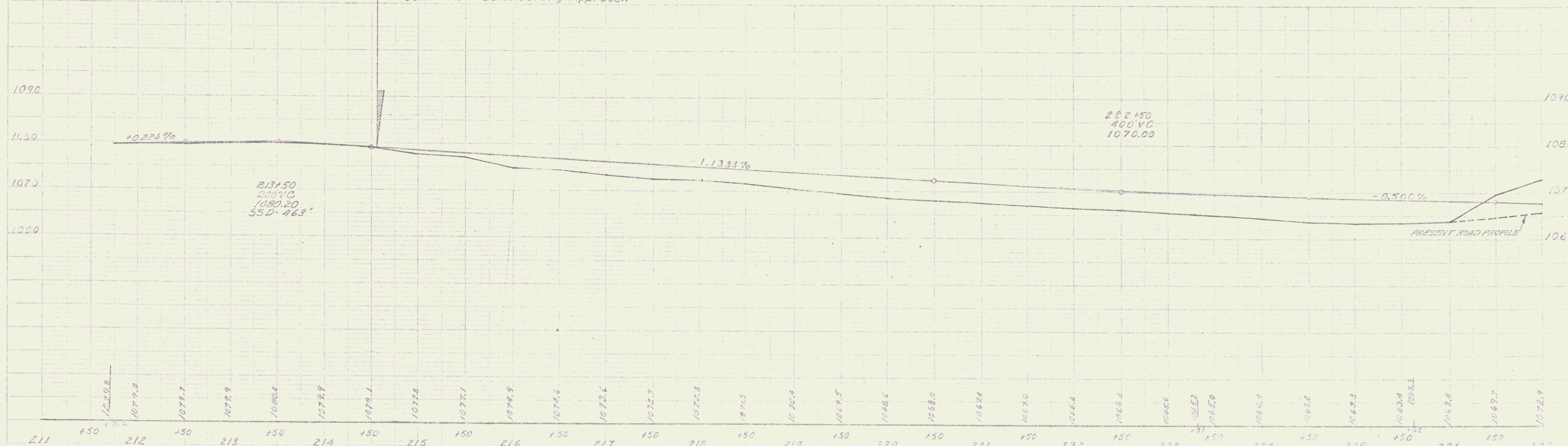
APPROVED <i>A.G. Spidle</i> SECONDARY ENGINEER DATE <i>June 25, 1962</i>	APPROVED <i>E.H. Bishop</i> DISTRICT ENGINEER DATE <i>6/29/60</i>	APPROVED _____ BRIDGE ENGINEER DATE _____	APPROVED <i>J. Murphy</i> DISTRICT ENGINEER DATE <i>March 25, 1960</i>	APPROVED <i>J.M. Lane</i> DISTRICT ENGINEER DATE <i>6/29/60</i>	APPROVED <i>A.S. Duford</i> DISTRICT ENGINEER DATE <i>6/29/60</i>
--	---	---	--	---	---

APPROVED _____ DIVISION ENGINEER	DATE _____
PROJECT S. NO. <i>0139(1)</i>	SHEET <i>1</i> OF 57 SHEETS



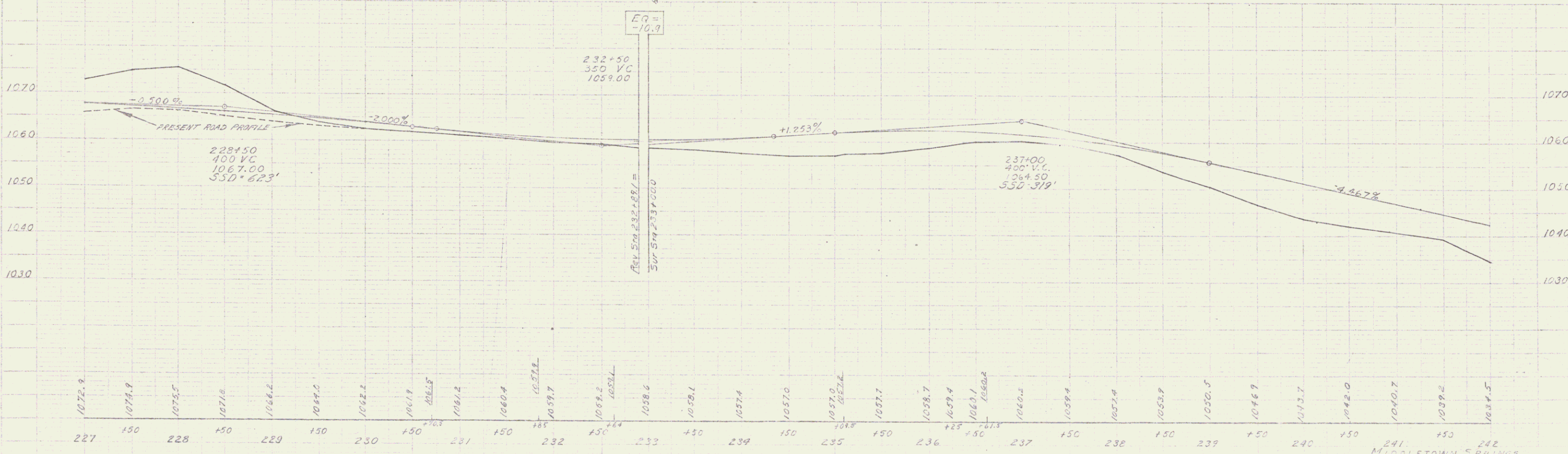
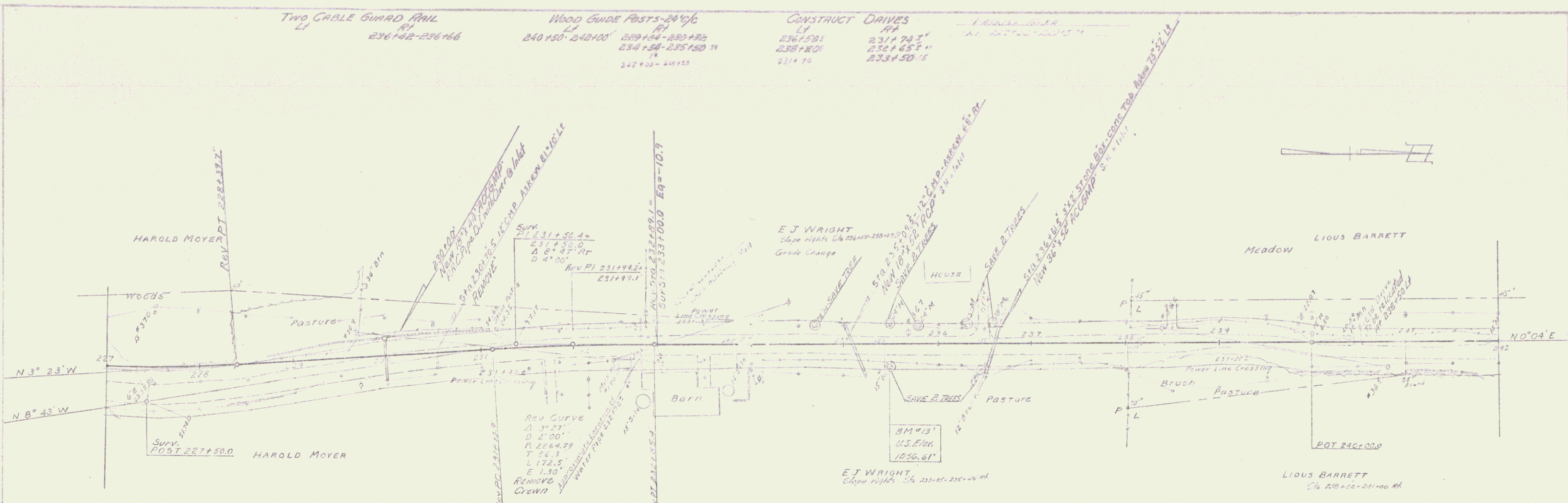
STA 214+56.0
 Begin Project
 Construct Satisfactory Approach

NOTE:
 All drives are to be constructed
 with a minimum width of 16 feet
 and a minimum flare radius of 15 feet.



1. M. #16 S.I.R. 3" N. 21° 15' E. Sta. 212+78. El. 1073.00
 B.M. #11 S.I.R. 3" N. 31° 15' E. Sta. 210+78 El. 1075.21
 3. M. #12 S.I.R. 3" N. 21° 15' E. Sta. 224+72 El. 1062.45

MIDDLETON SPRINGS
 PROJECT No. 013013
 Sheet 18 of 57

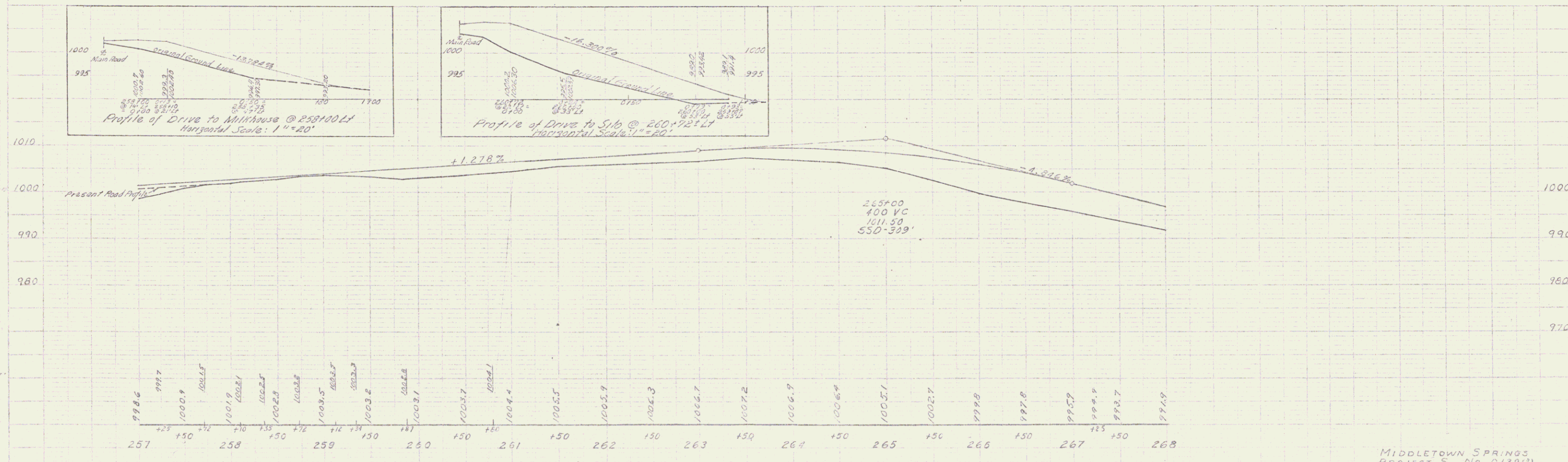
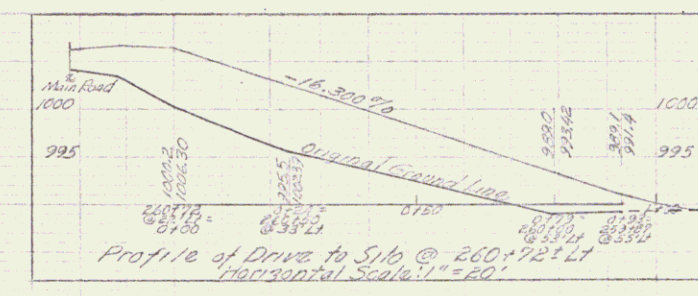
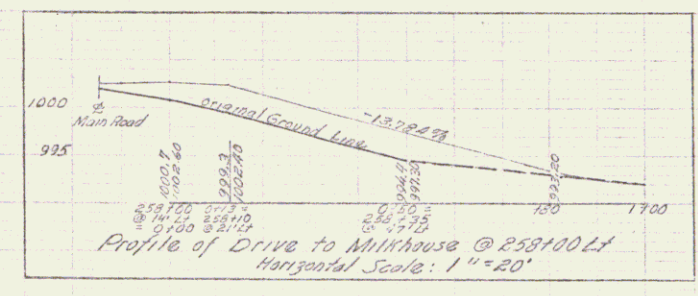
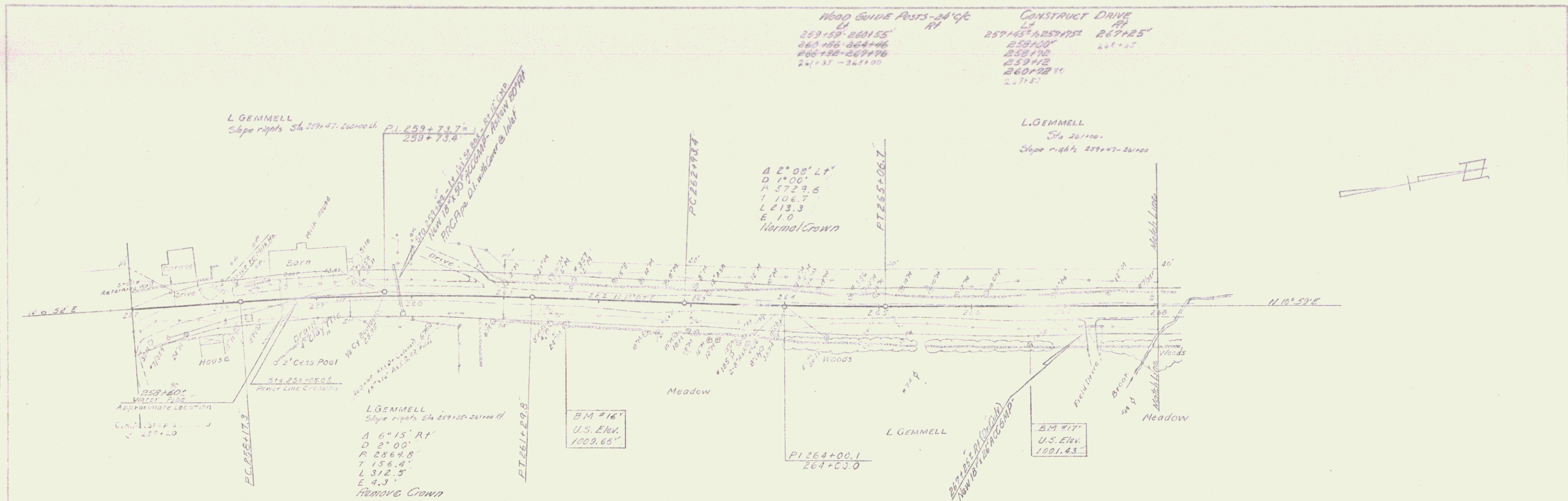


B.M. # 13 S.I.R. 15" Maple 25' W. Sta. 235+50 El. 1036.91

241
MIDDLETOWN SPRINGS
PROJECT 5, No 0139(G)
Sheet 18 of 57

DESIGN
DATE
BY

PROFILE
DATE
BY



B.M. #16 S.I.R. 24" Maple 30" Ri. Sm. 261+66 E.I. 1007.15

B.M. #17 S.I.R. 18" Maple 40" Ri. Sm. 262+67 E.I. 1001.43

MIDDLETOWN SPRINGS
 PROJECT S No 0139(3)
 Sheet 21 of 57

5

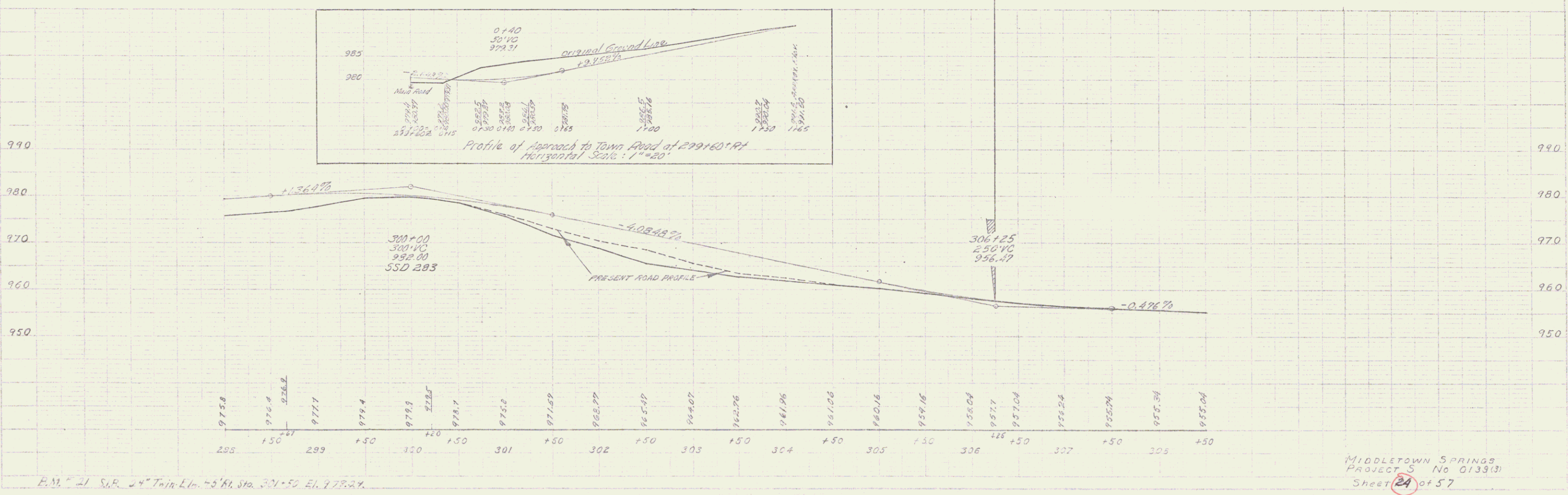
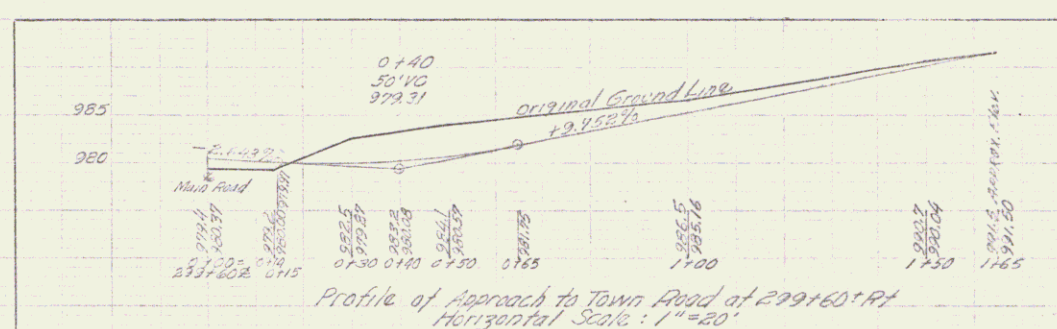
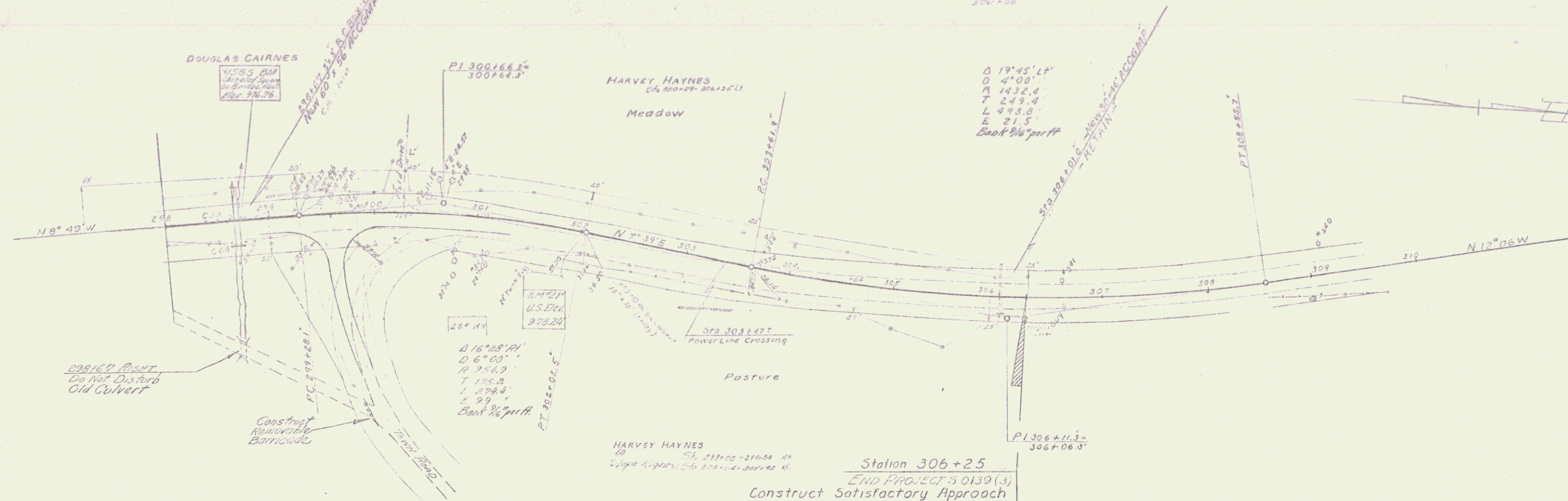
REMOVAL & DISPOSAL OF PRESENT GUARD RAIL
 LT 298+40' - 298+88'
 RT 298+40' - 298+88'

TWO CABLE GUARD RAIL
 LT 298+158 - 298+182
 RT 298+158 - 298+182

ROAD GUIDE POSTS - 24' OC
 LT 301+00 - 306+100
 RT

CONSTRUCT APPROACH
 RT 299+60' - 306+100

CONSTRUCT DRIVE
 LT 300+20 - 302+100
 RT



B.M. at S.R. 24" Twp. E. 1/4 Sec. 30N-50 E. 178-24.

MIDDLETOWN SPRINGS
 PROJECT 5 No 0133(3)
 Sheet 24 of 57