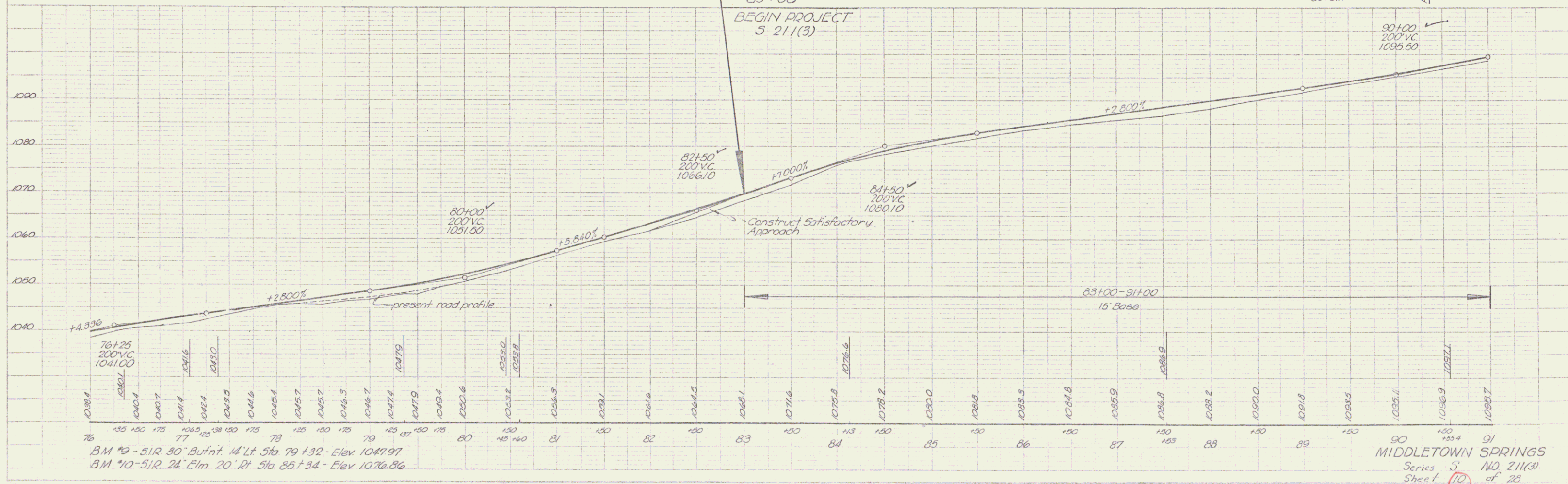
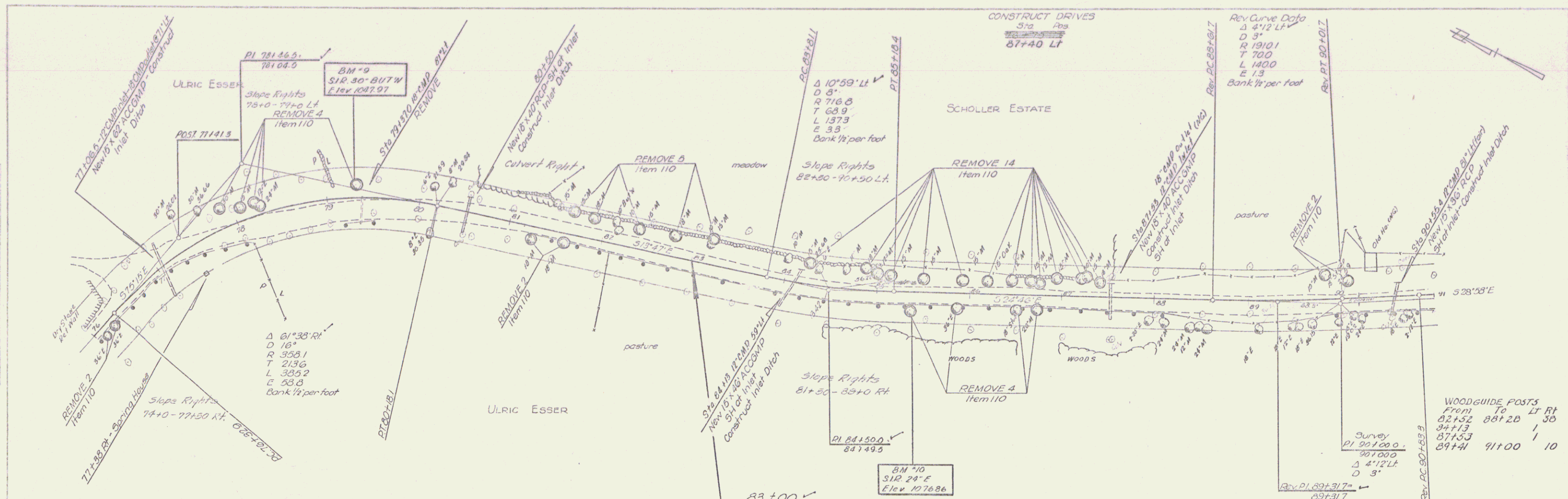


|       |       |
|-------|-------|
| 17-88 | Major |
| 17-89 | Sub   |
| 17-90 | Sub   |
| 17-91 | Sub   |
| 17-92 | Sub   |
| 17-93 | Sub   |
| 17-94 | Sub   |
| 17-95 | Sub   |
| 17-96 | Sub   |
| 17-97 | Sub   |
| 17-98 | Sub   |
| 17-99 | Sub   |
| 18-00 | Sub   |
| 18-01 | Sub   |
| 18-02 | Sub   |
| 18-03 | Sub   |
| 18-04 | Sub   |
| 18-05 | Sub   |
| 18-06 | Sub   |
| 18-07 | Sub   |
| 18-08 | Sub   |
| 18-09 | Sub   |
| 18-10 | Sub   |
| 18-11 | Sub   |
| 18-12 | Sub   |
| 18-13 | Sub   |
| 18-14 | Sub   |
| 18-15 | Sub   |
| 18-16 | Sub   |
| 18-17 | Sub   |
| 18-18 | Sub   |
| 18-19 | Sub   |
| 18-20 | Sub   |
| 18-21 | Sub   |
| 18-22 | Sub   |
| 18-23 | Sub   |
| 18-24 | Sub   |
| 18-25 | Sub   |
| 18-26 | Sub   |
| 18-27 | Sub   |
| 18-28 | Sub   |
| 18-29 | Sub   |
| 18-30 | Sub   |
| 18-31 | Sub   |
| 18-32 | Sub   |
| 18-33 | Sub   |
| 18-34 | Sub   |
| 18-35 | Sub   |
| 18-36 | Sub   |
| 18-37 | Sub   |
| 18-38 | Sub   |
| 18-39 | Sub   |
| 18-40 | Sub   |
| 18-41 | Sub   |
| 18-42 | Sub   |
| 18-43 | Sub   |
| 18-44 | Sub   |
| 18-45 | Sub   |
| 18-46 | Sub   |
| 18-47 | Sub   |
| 18-48 | Sub   |
| 18-49 | Sub   |
| 18-50 | Sub   |
| 18-51 | Sub   |
| 18-52 | Sub   |
| 18-53 | Sub   |
| 18-54 | Sub   |
| 18-55 | Sub   |
| 18-56 | Sub   |
| 18-57 | Sub   |
| 18-58 | Sub   |
| 18-59 | Sub   |
| 18-60 | Sub   |
| 18-61 | Sub   |
| 18-62 | Sub   |
| 18-63 | Sub   |
| 18-64 | Sub   |
| 18-65 | Sub   |
| 18-66 | Sub   |
| 18-67 | Sub   |
| 18-68 | Sub   |
| 18-69 | Sub   |
| 18-70 | Sub   |
| 18-71 | Sub   |
| 18-72 | Sub   |
| 18-73 | Sub   |
| 18-74 | Sub   |
| 18-75 | Sub   |
| 18-76 | Sub   |
| 18-77 | Sub   |
| 18-78 | Sub   |
| 18-79 | Sub   |
| 18-80 | Sub   |
| 18-81 | Sub   |
| 18-82 | Sub   |
| 18-83 | Sub   |
| 18-84 | Sub   |
| 18-85 | Sub   |
| 18-86 | Sub   |
| 18-87 | Sub   |
| 18-88 | Sub   |
| 18-89 | Sub   |
| 18-90 | Sub   |
| 18-91 | Sub   |
| 18-92 | Sub   |
| 18-93 | Sub   |
| 18-94 | Sub   |
| 18-95 | Sub   |
| 18-96 | Sub   |
| 18-97 | Sub   |
| 18-98 | Sub   |
| 18-99 | Sub   |
| 19-00 | Sub   |



BM #9 - S1R 30' BUTW Elev. 1047.97  
 BM #10 - S1R 24' Elm 20' Rt Sta 85+34 - Elev. 1076.86

MIDDLETOWN SPRINGS  
 Series S NO. 211(3)  
 Sheet 10 of 23