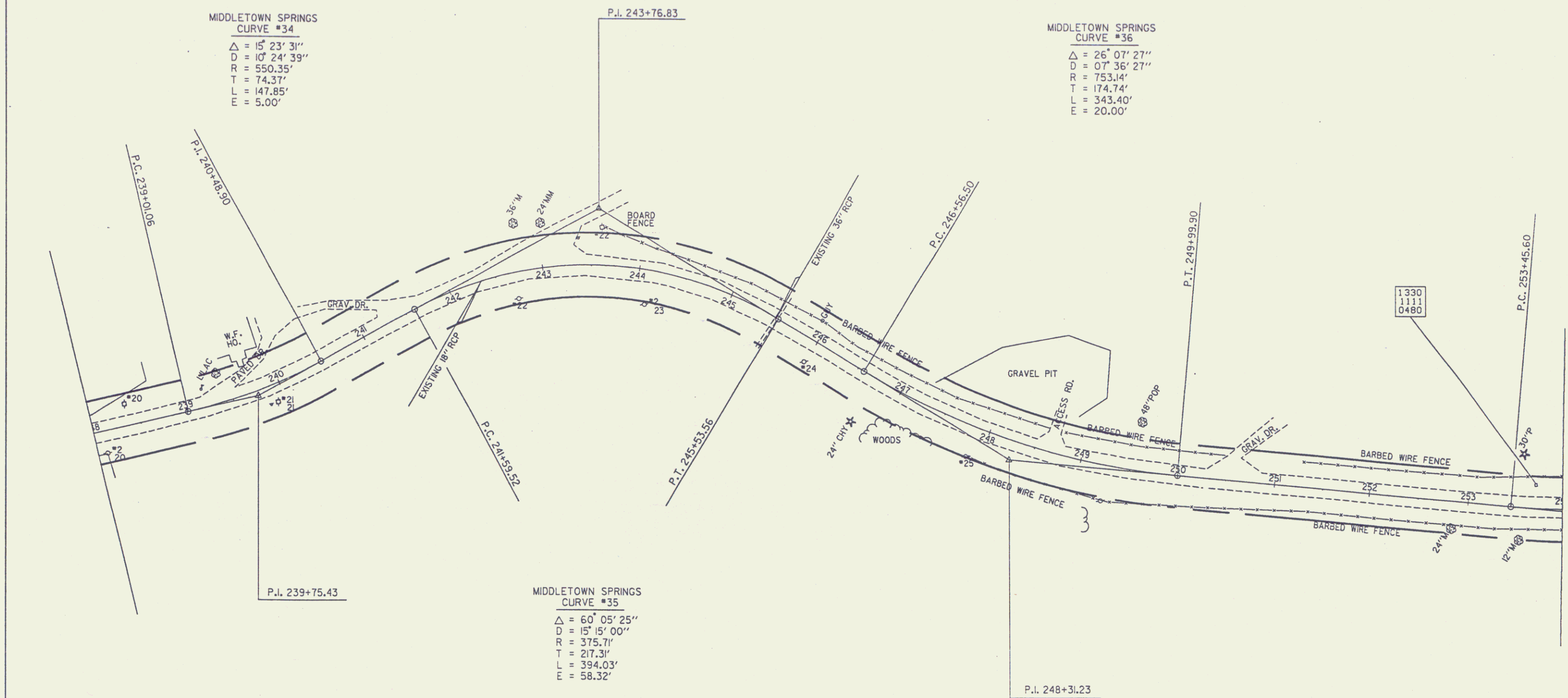


MIDDLETOWN SPRINGS
CURVE #34
 $\Delta = 15^\circ 23' 31''$
 $D = 107' 24' 39''$
 $R = 550.35'$
 $T = 74.37'$
 $L = 147.85'$
 $E = 5.00'$

MIDDLETOWN SPRINGS
CURVE #36
 $\Delta = 26^\circ 07' 27''$
 $D = 07' 36' 27''$
 $R = 753.14'$
 $T = 174.74'$
 $L = 343.40'$
 $E = 20.00'$

MIDDLETOWN SPRINGS
CURVE #35
 $\Delta = 60^\circ 05' 25''$
 $D = 15^\circ 15' 00''$
 $R = 375.71'$
 $T = 217.31'$
 $L = 394.03'$
 $E = 58.32'$



Sheet 45
 SURVEYED BY MOREAU
 DRAWN BY DAYE
 SQUAD LEADER
 DESIGN FILE NO. Z00150.76JVT
 PRS VTI33L 44 DATE 44
 PLS PLOTTER