

MIDDLETOWN SPRINGS
CURVE #27

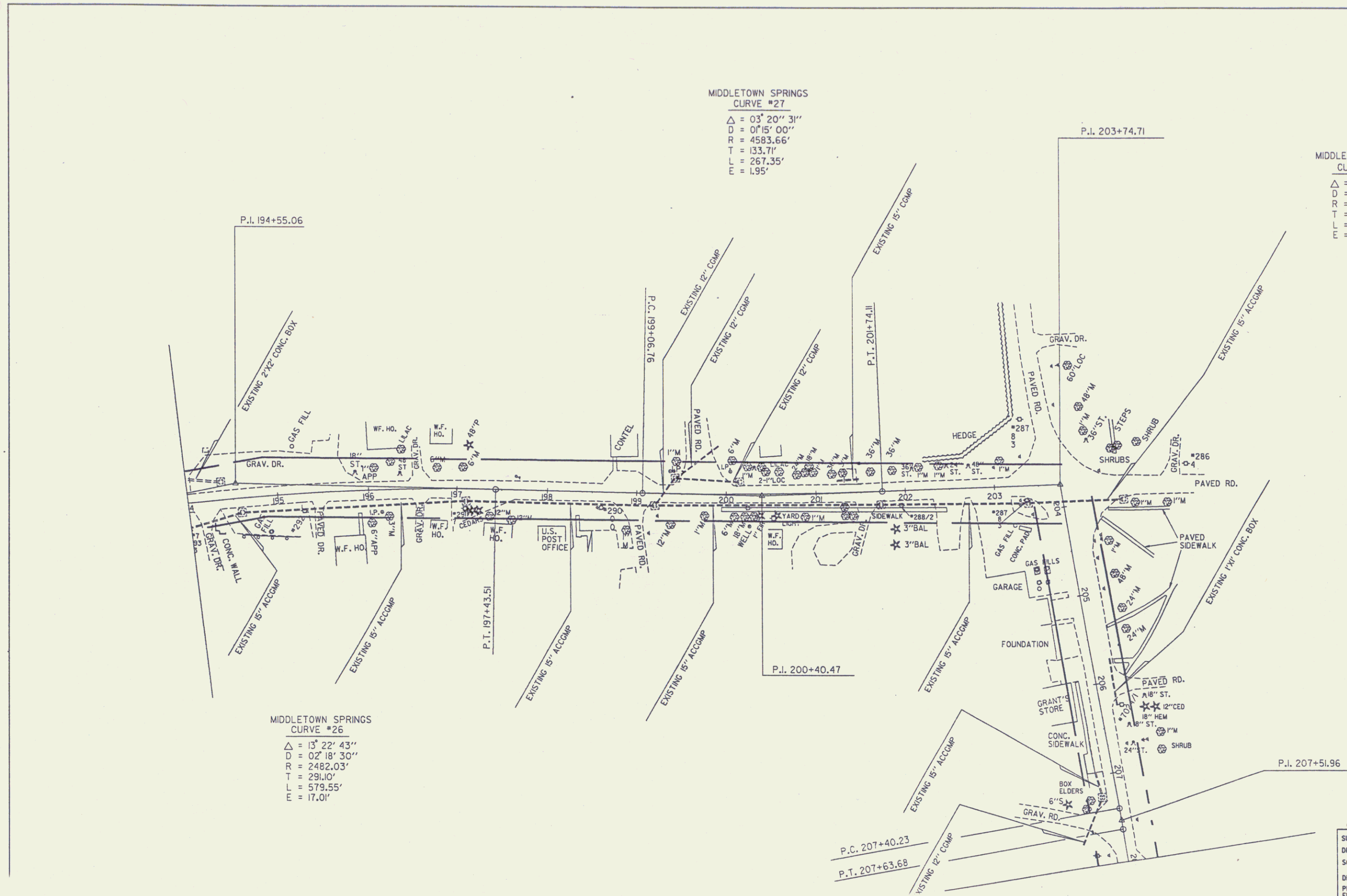
$\Delta = 03^{\circ} 20' 31''$
 $D = 0115' 00''$
 $R = 4583.66'$
 $T = 133.71'$
 $L = 267.35'$
 $E = 1.95'$

MIDDLETOWN SPRINGS
CURVE #28

$\Delta = 82^{\circ} 11' 00''$
 $D = 00' 00' 00''$
 $R = 0.00'$
 $T = 0.00'$
 $L = 0.00'$
 $E = 0.00'$

MIDDLETOWN SPRINGS
CURVE #26

$\Delta = 13^{\circ} 22' 43''$
 $D = 02' 18' 30''$
 $R = 2482.03'$
 $T = 291.10'$
 $L = 579.55'$
 $E = 17.01'$



Sheet 42
 SURVEYED BY MOREAU
 DRAWN BY DAYE
 SQUAD LEADER
 DESIGN FILE NO. ZG0450.76JVT
 PRF VT133L-41 DATE
 FILE 41 PLOT