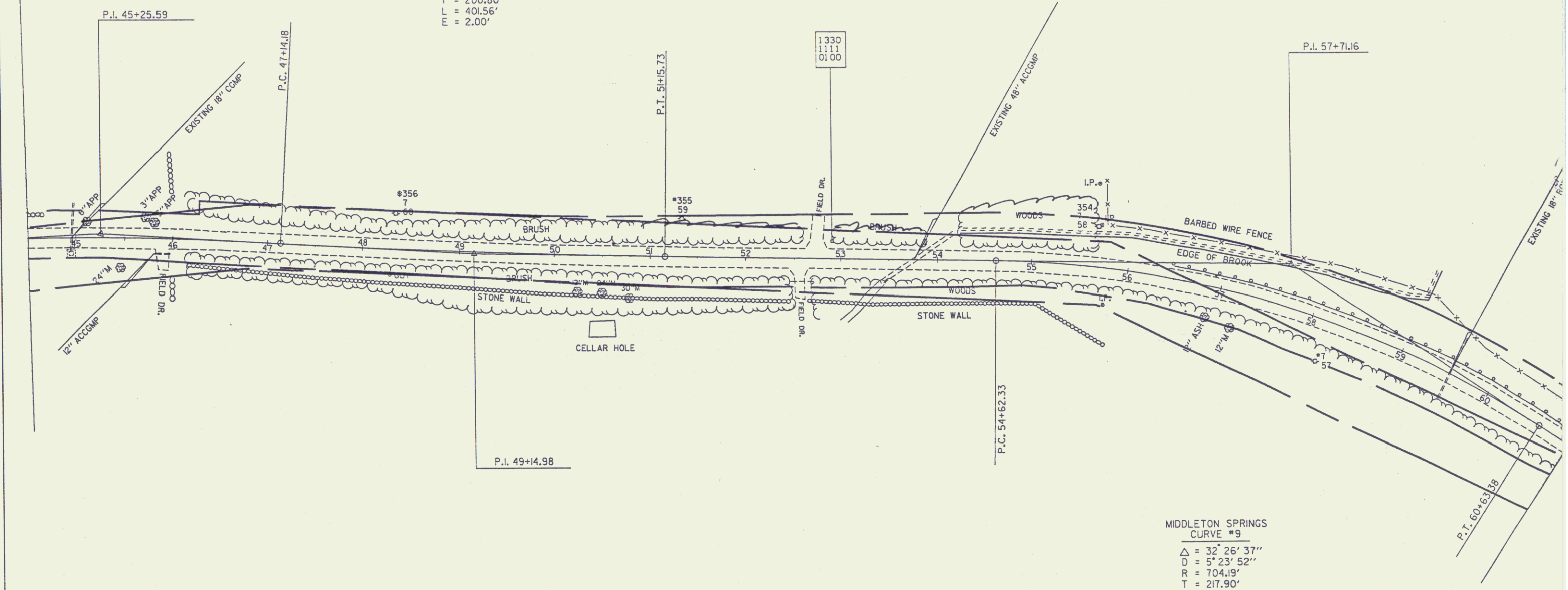


MIDDLETOWN SPRINGS
CURVE #8

$\Delta = 2^{\circ} 16' 57''$
 $D = 00^{\circ} 34' 06''$
 $R = 10079.82'$
 $T = 200.80'$
 $L = 401.56'$
 $E = 2.00'$



MIDDLETOWN SPRINGS
CURVE #9

$\Delta = 32^{\circ} 26' 37''$
 $D = 5^{\circ} 23' 52''$
 $R = 704.19'$
 $T = 217.90'$
 $L = 601.05'$
 $E = 44.01'$

Sheet 30 32
 SURVEYED BY MOREAU
 DRAWN BY DAYE
 SQUAD LEADER 31
 DESIGN FILE NO. ZG0150.763VT
 DATE