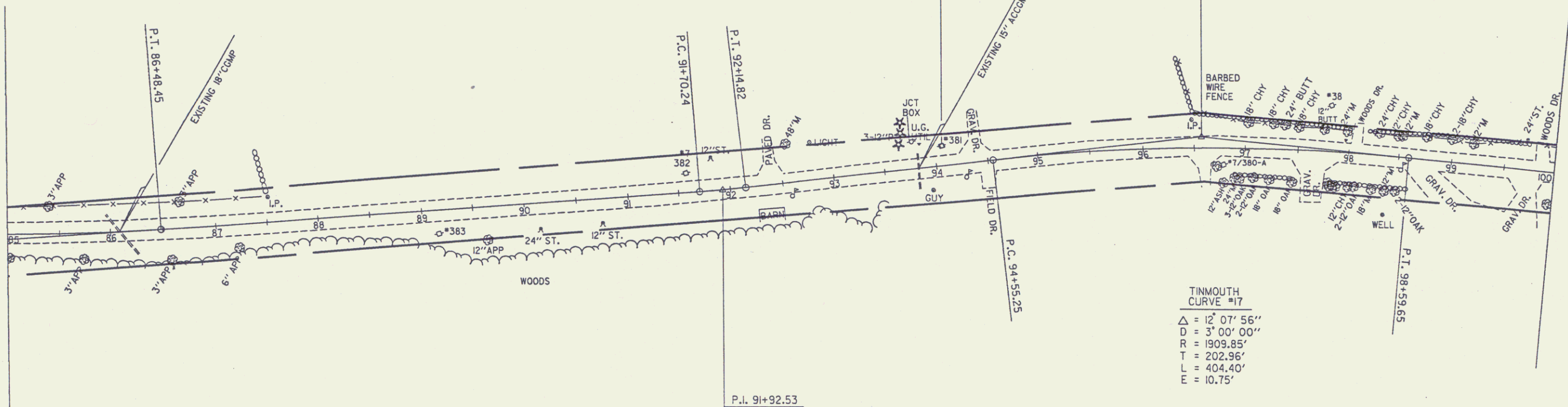


TINMOUTH
CURVE #16
 $\Delta = 2^\circ 13' 44''$
 $D = 51' 00'' 00''$
 $R = 1145.92'$
 $T = 22.29'$
 $L = 44.58'$
 $E = 0.22'$

P.I. 96+58.21



P.I. 91+92.53

TINMOUTH
CURVE #17
 $\Delta = 12^\circ 07' 56''$
 $D = 3^\circ 00' 00''$
 $R = 1909.85'$
 $T = 202.96'$
 $L = 404.40'$
 $E = 10.75'$

Sheet 27
SURVEYED BY MOREAU
DRAWN BY DATE
SQUAD LEADER 26
DESIGN FILE NO. ZG0150.763VT