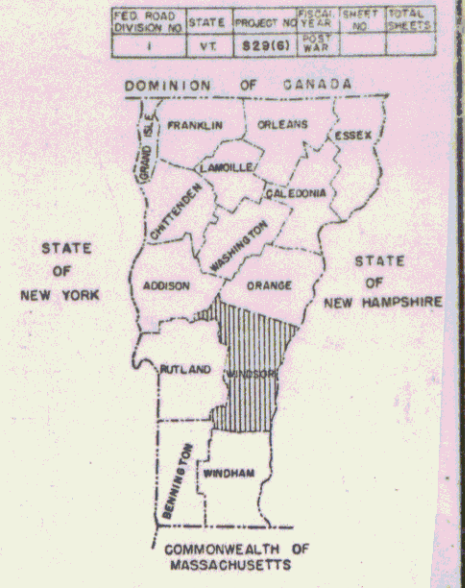
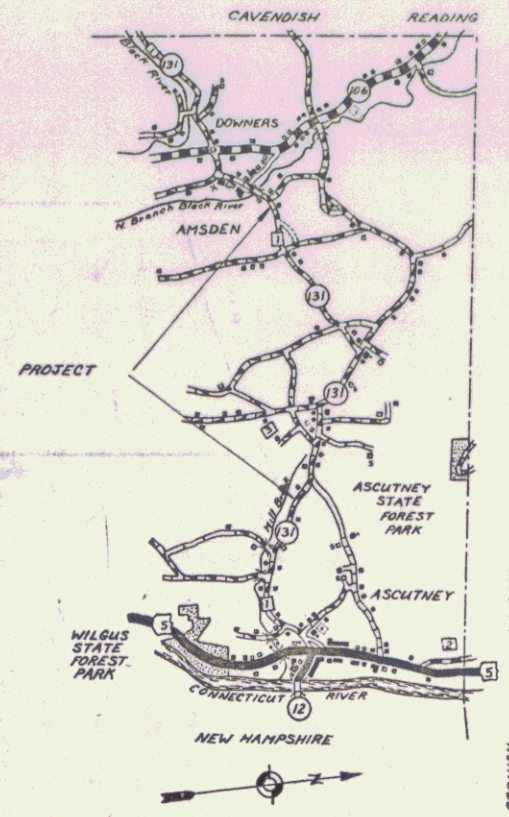


INDEX OF SHEETS

SHEET NO. 1	TITLE PAGE
2	TYPICAL CROSS-SECTION OF IMPROVEMENT (DOUBLE TACK COAT OF REFINED TAR WITH PEASTONE SEAL)
3	BANKING AND WIDENING TABLES
4	QUANTITY SHEET (ITEMS)
5	QUANTITY SHEET (DRAINAGE)
6-9	EARTHWORK SHEETS
10-23	PLAN AND PROFILE SHEETS

**STATE OF VERMONT
DEPARTMENT OF HIGHWAYS**

PROPOSED IMPROVEMENT



(To be Returned to R.O.W. Division)
 Form of VT 131
 PERPETUAL
 MON FILE
 RIGHTS-OF-WAY DIVISION
 Sta 132+00 - 164+00
 MP 6.705

Town of Weathersfield

Pin # 99R647

Rte VT 131



CONVENTIONAL SIGNS

COUNTY LINE
TOWN LINE
FENCE LINE
STONE WALL
UNFENCED PROPERTY
GUARD RAIL
TRAVELED WAY
RAILROAD
RETAINING WALL
CENTER LINE
SURVEY LINE
CULVERT
DROP INLET
TROLLEY POLE
POWER POLE
TELEPHONE POLE
TREES
HEDGE

CURVE DATA

DEFLECTION OF ANGLE	Δ
DEGREE OF CURVE	D
RADIUS OF CURVE	R
TANGENT DISTANCE	T
LENGTH OF CURVE	L
EXTERNAL DISTANCE	E
POINT OF INTERSECTION	P.I.
POINT OF CURVE	P.C.
POINT OF TANGENT	P.T.
POINT ON TANGENT	P.O.T.
POINT ON SUB-TANGENT	P.O.S.T.

SCALES

TITLE	1" = 500'
TYPICAL	1" = 2'
PLAN	1" = 50'
PROFILE HORIZONTAL	1" = 50'
PROFILE VERTICAL	1" = 10'
CROSS-SECTIONS	1" = 5'

*END Project on VT 131
STA 168+00 MP 5.140*

Sta 132+00 - 164+00 Missing

THESE PLANS ARE SUBJECT TO SUCH REVISIONS AS MAY BE REQUIRED BY THE BUREAU OF PUBLIC ROADS OR THE COMMISSIONER OF HIGHWAYS.

CONSTRUCTION IS TO BE CARRIED ON IN ACCORDANCE WITH THE PLANS AND THE STANDARD SPECIFICATIONS FOR HIGHWAY AND BRIDGE CONSTRUCTION OF JANUARY 1938 SUBMITTED TO THE BUREAU OF PUBLIC ROADS AS APPROVED JULY 5, 1938, INCLUDING ALL SUBSEQUENT APPROVED REVISIONS AND SUCH REVISED SPECIFICATIONS AND SPECIAL PROVISIONS AS ARE SUBMITTED WITH THE PLANS.

APPROVED DATE	APPROVED DATE	APPROVED DATE	APPROVED DATE	APPROVED DATE
CONSTRUCTION ENGINEER	BRIDGE ENGINEER	DISTRICT ENGINEER	HIGHWAY ENGINEER	CHIEF ENGINEER

3/1/57

DEPARTMENT OF COMMERCE
BUREAU OF PUBLIC ROADS

RECOMMENDED FOR APPROVAL

DISTRICT ENGINEER _____ DATE _____

APPROVED

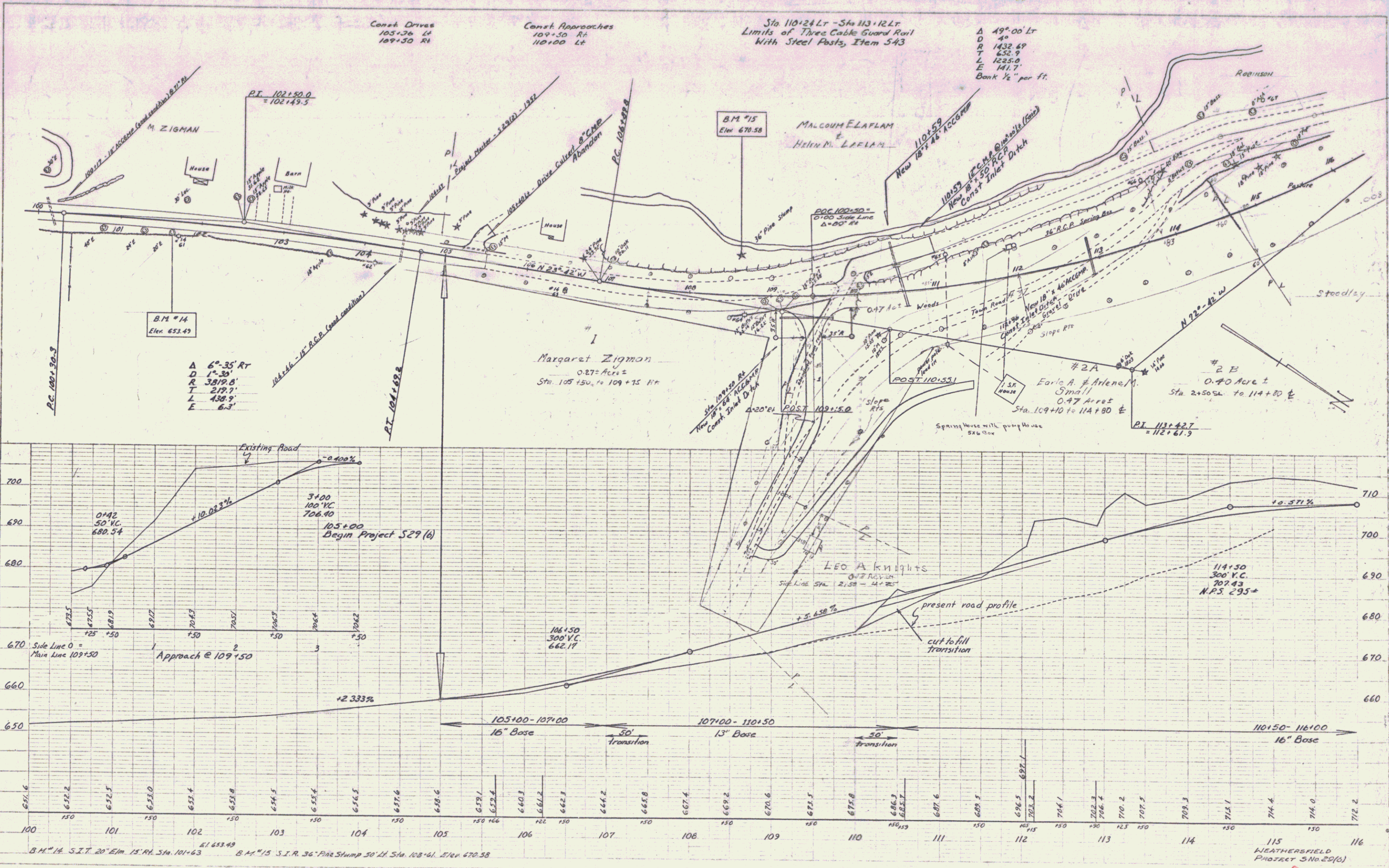
DIVISION ENGINEER _____ DATE _____

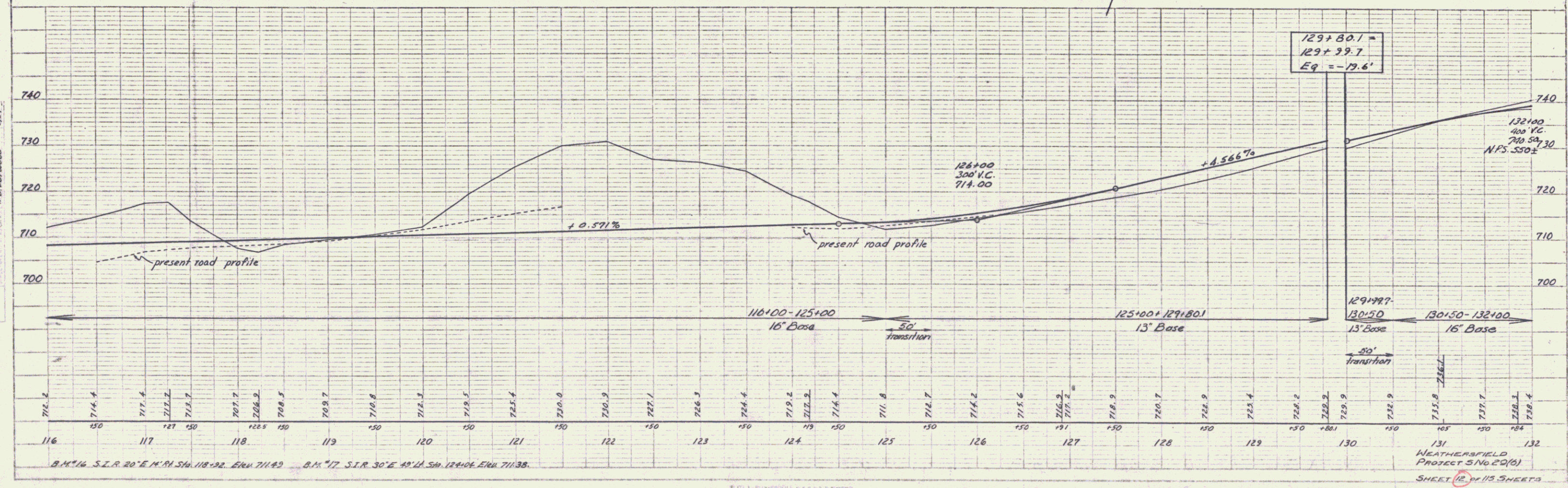
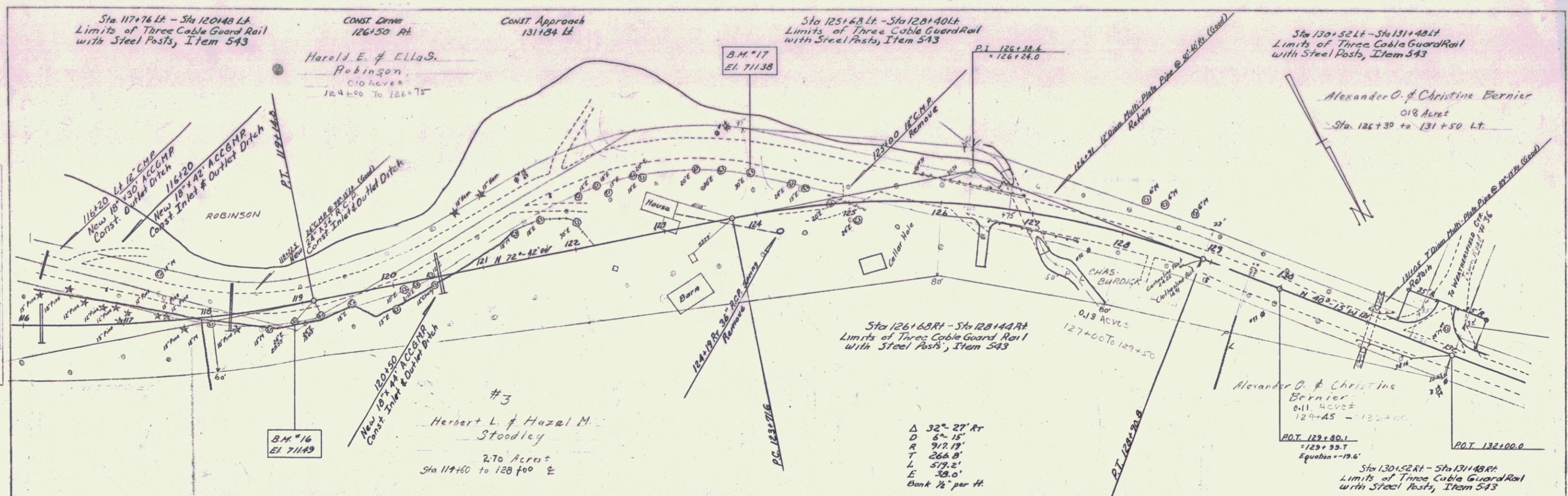
PROJECT **S** NO. **29 (6)**

SHEET **1** OF SHEETS

PLAN
 PROJECT: M.I. R. 529
 DATE: 10/15/59
 DRAWN BY: M. ZIGMAN
 CHECKED BY: R. B. BURMAN
 SCALE: AS SHOWN

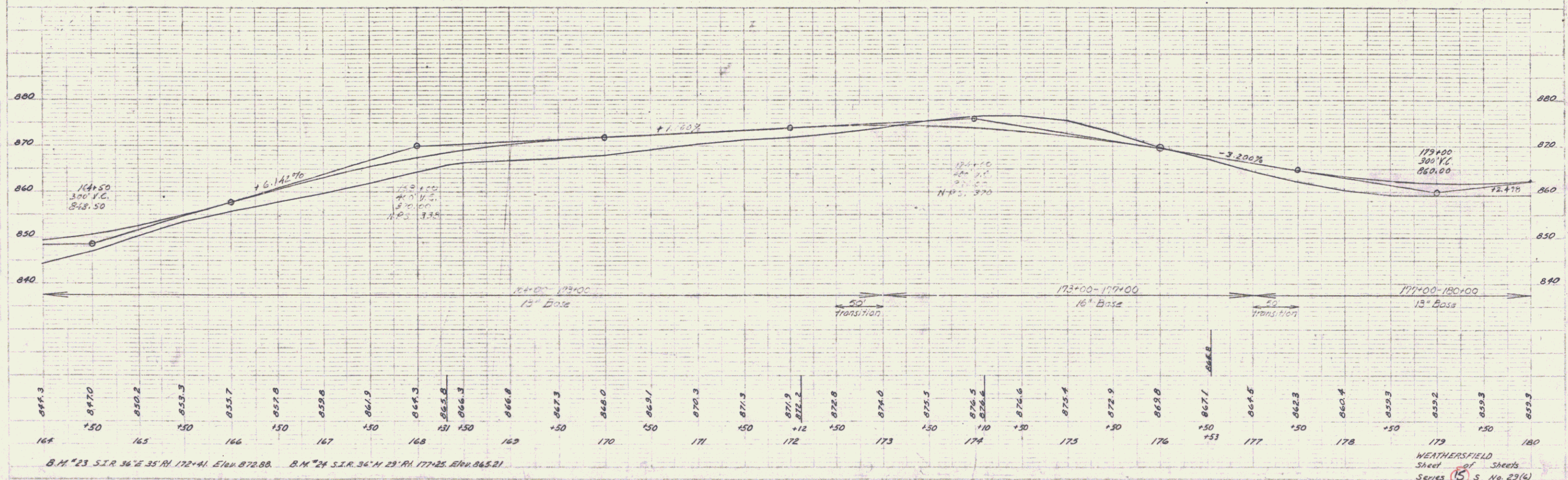
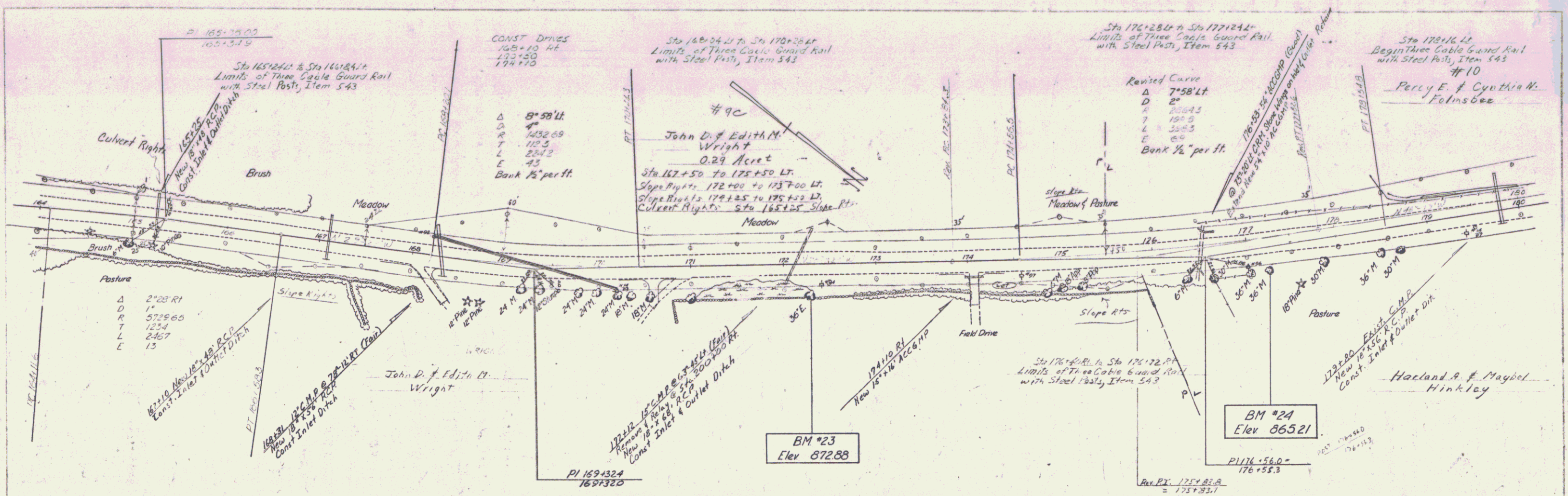
PROFILE
 PROJECT: M.I. R. 529
 DATE: 10/15/59
 DRAWN BY: M. ZIGMAN
 CHECKED BY: R. B. BURMAN
 SCALE: AS SHOWN

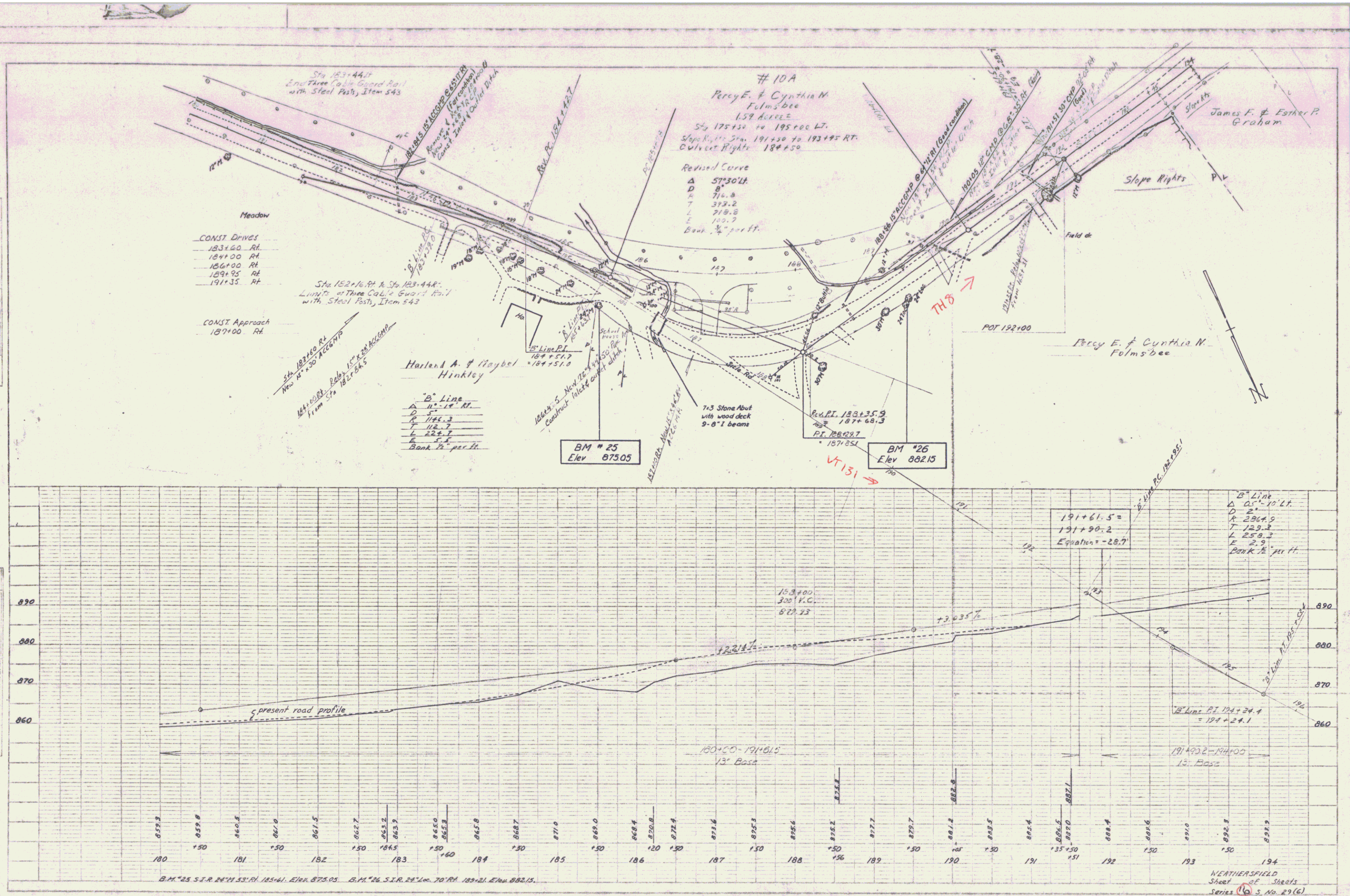




PLAN
 DATE: 10/15/1911
 DRAWN BY: J. B. BARNUM
 CHECKED BY: J. B. BARNUM

PROFILE
 DATE: 10/15/1911
 DRAWN BY: J. B. BARNUM
 CHECKED BY: J. B. BARNUM





PLAN
 DATE: 10/15/1910
 SHEET NO. 1 OF 2
 PROJECT: WEATHERSFIELD ST. & RAILROAD

PROFILE
 DATE: 10/15/1910
 SHEET NO. 1 OF 2
 PROJECT: WEATHERSFIELD ST. & RAILROAD

WEATHERSFIELD
 Street & Railroad
 Series 10, No. 29(6)

PLAN	DATE	BY
REVISIONS		
NO.	DATE	DESCRIPTION
1		

PROFILE	DATE	BY
REVISIONS		
NO.	DATE	DESCRIPTION
1		

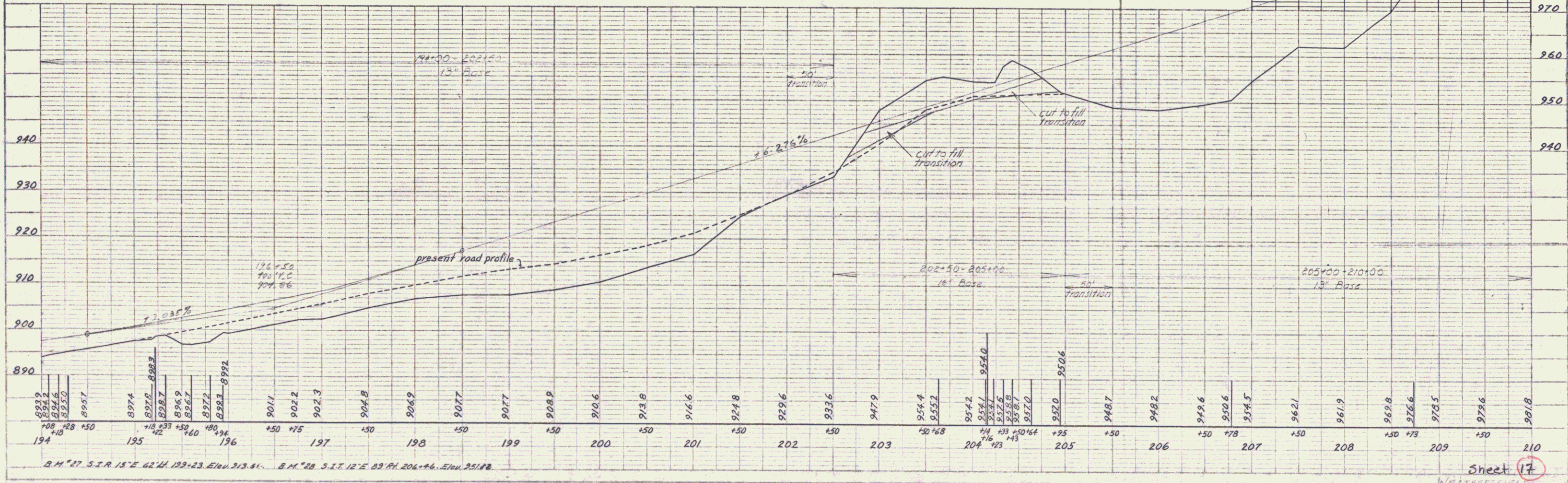
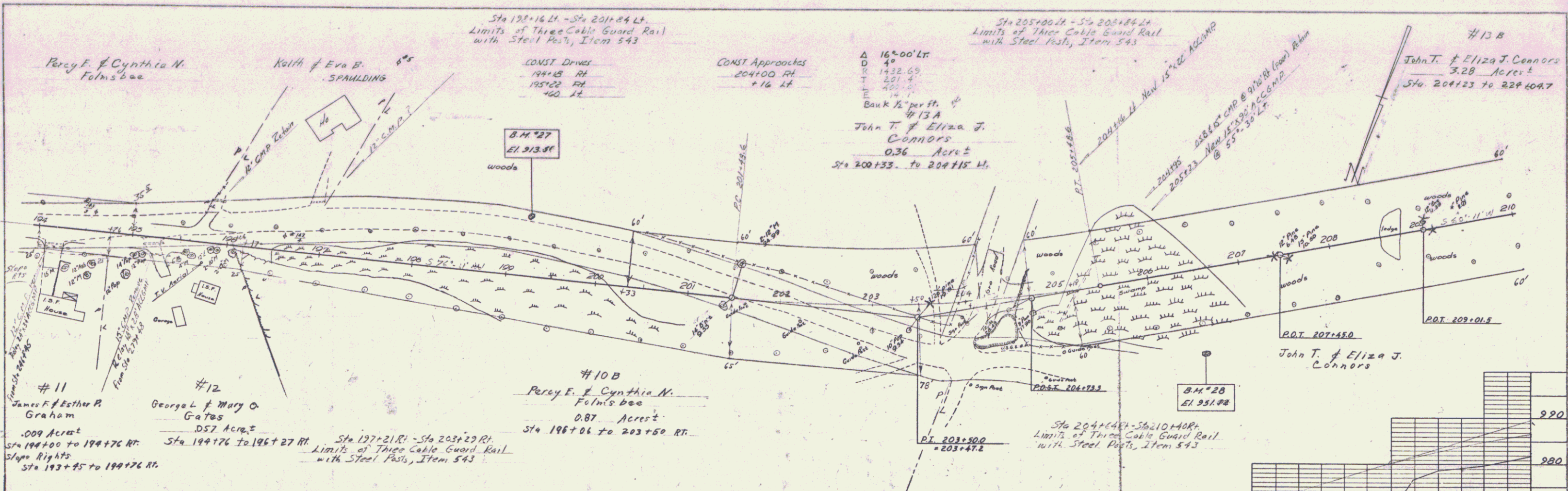
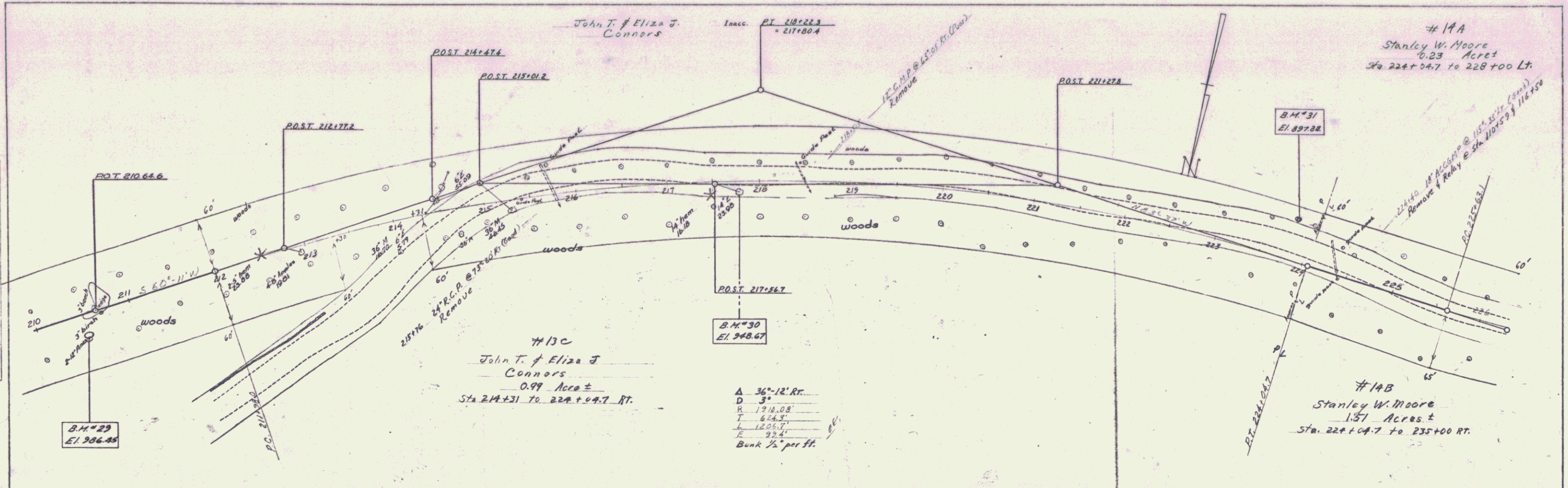


PLATE 1 - PLAN & PROFILE OF P.A.R. STATION
 PROFILE & ELEVATION
 R.F.P. CO. INC. 1948-9

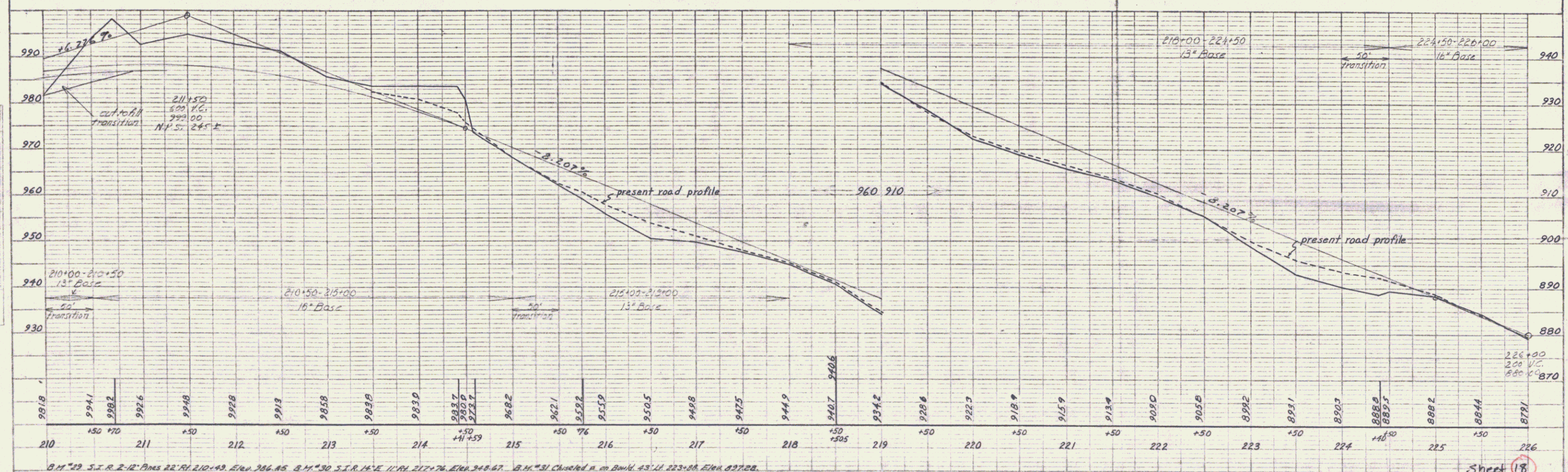
Sheet 17
 6

PLAN	DATE
NO.	
BY	
CHECKED	
APPROVED	
DATE	

PROFILE	DATE
NO.	
BY	
CHECKED	
APPROVED	
DATE	



Δ 36°-12' RT.
D 3'
K 1918.08
T 614.37
L 1206.77
E 32.4'
Bunk 1/2' per ft.



B.M. 29 S.I.R. 2-12 Pins 22° 41' 210+49. Elev. 906.85. B.M. 30 S.I.R. 16° 11' 217+76. Elev. 948.67. B.M. 31 Chained R. on B.M. 45-11 223+88. Elev. 897.88.

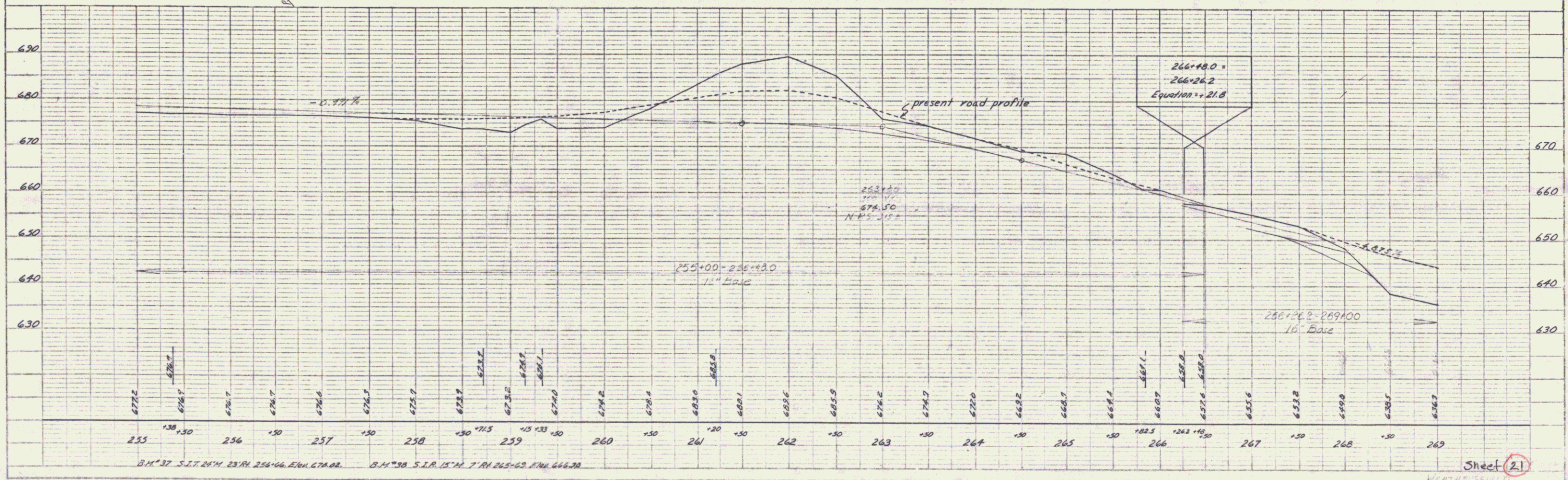
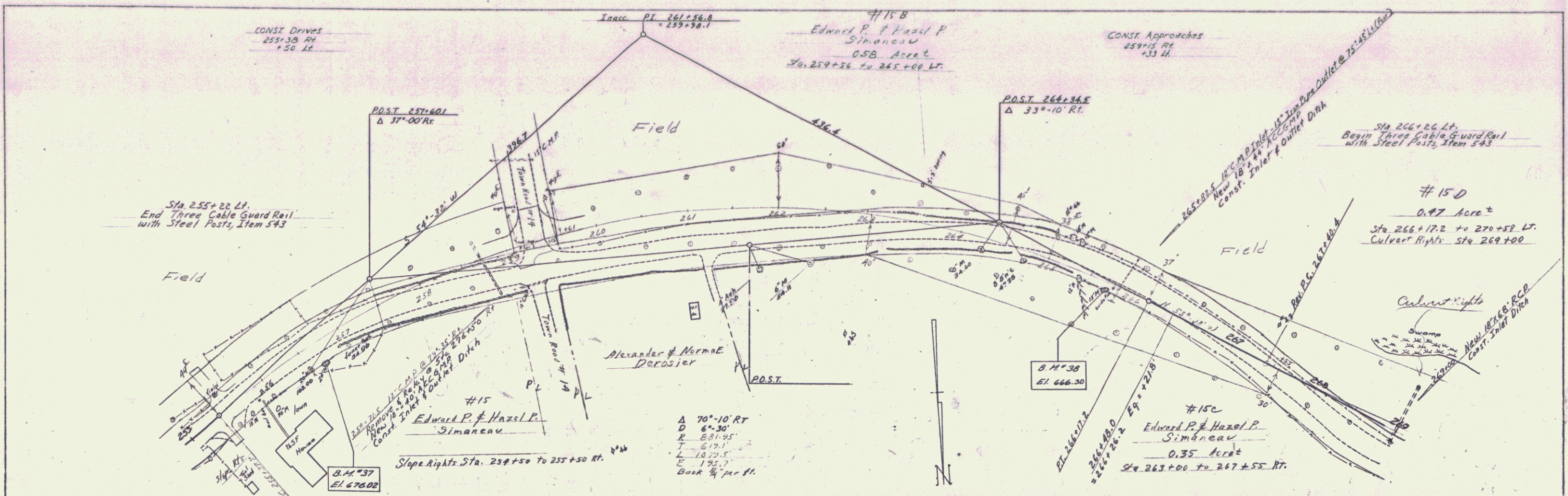
Sheet 18

PLATE 1 - PLAN & PROFILE
SCALE: 1" = 40' HORIZ. 1" = 10' VERT.
DATE: 10/10/00

7

PLAN	DATE
REVISION	
NO.	
BY	
CHECKED	
DATE	
SCALE	
NOTE BOOK	
NO.	
DATE	
BY	
CHECKED	
DATE	

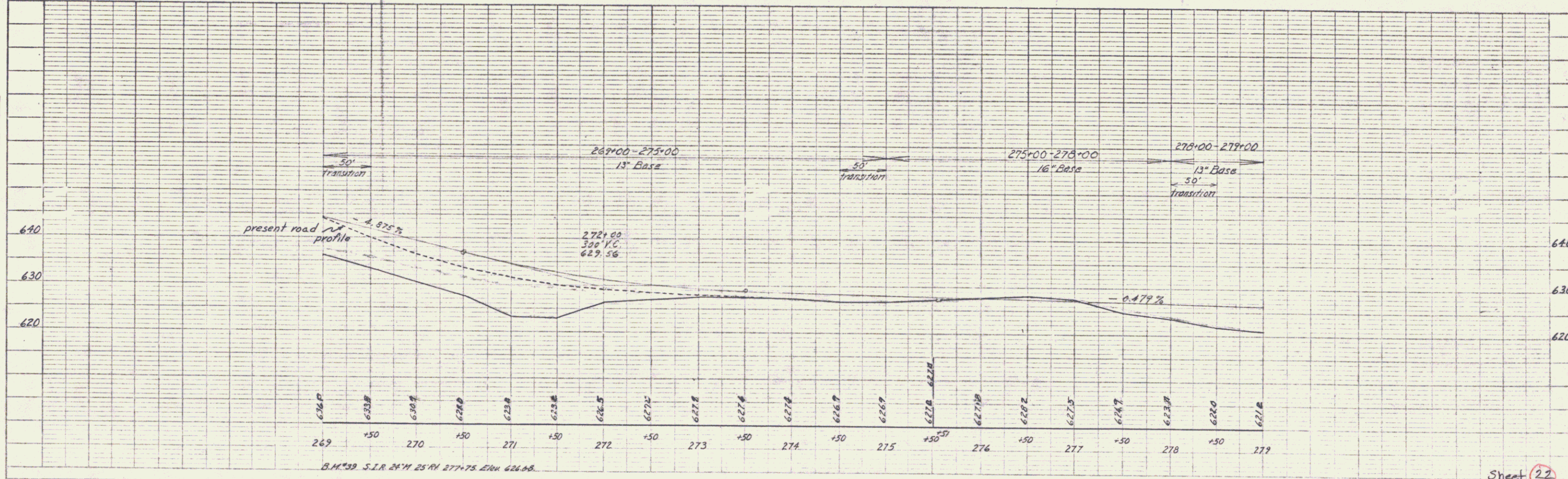
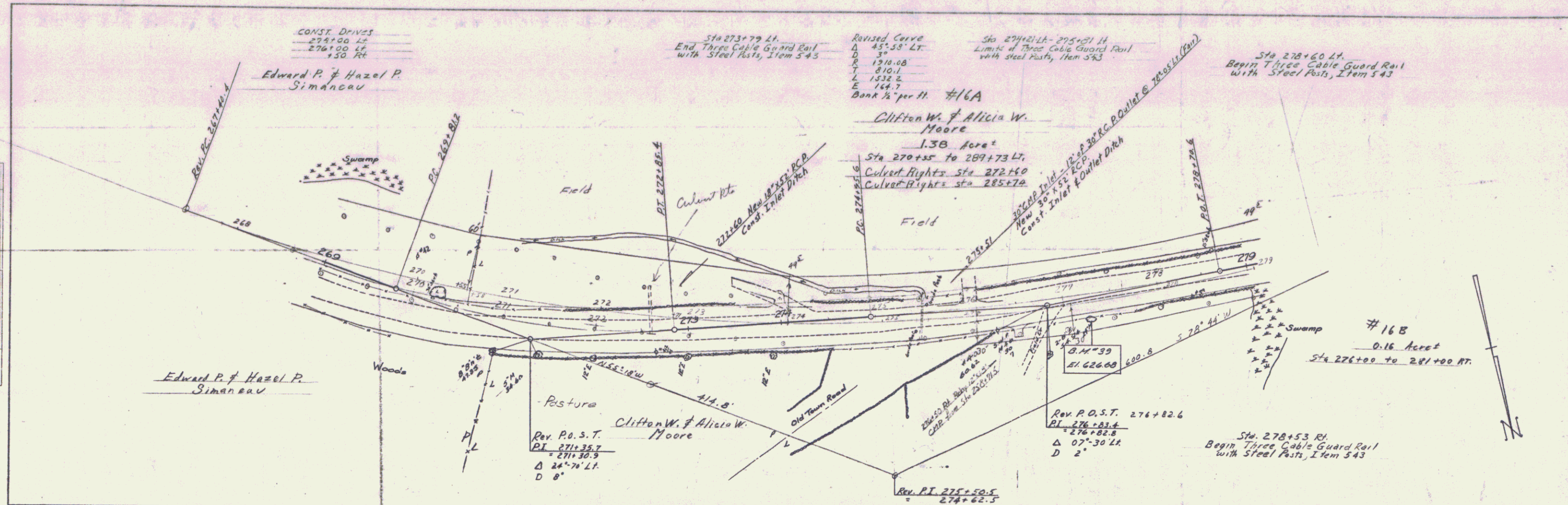
PROFILE	DATE
REVISION	
NO.	
BY	
CHECKED	
DATE	
SCALE	
NOTE BOOK	
NO.	
DATE	
BY	
CHECKED	
DATE	



Sheet (21)
10

PLAN	DATE
REVISIONS	
BY	
CHECKED	
DATE	
NO.	

PROFILE	DATE
REVISIONS	
BY	
CHECKED	
DATE	
NO.	

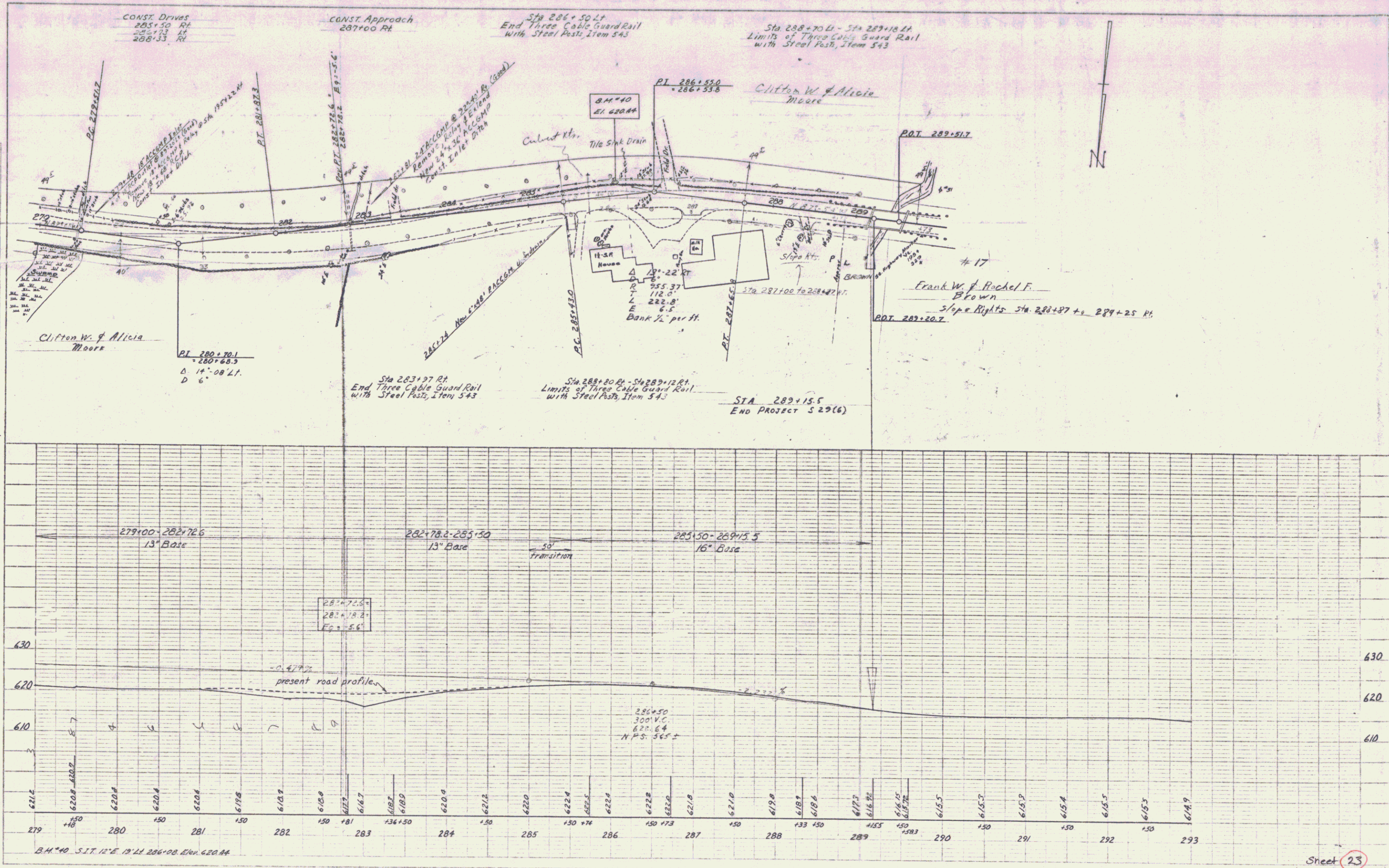


Sheet 22

11

PLAN	DATE
APPROVED	
DATE	
BY	
NO.	

PROFILE	DATE
APPROVED	
DATE	
BY	
NO.	



Sheet 23
 12