

STATE OF VERMONT  
DEPARTMENT OF HIGHWAYS  
PROPOSED IMPROVEMENT

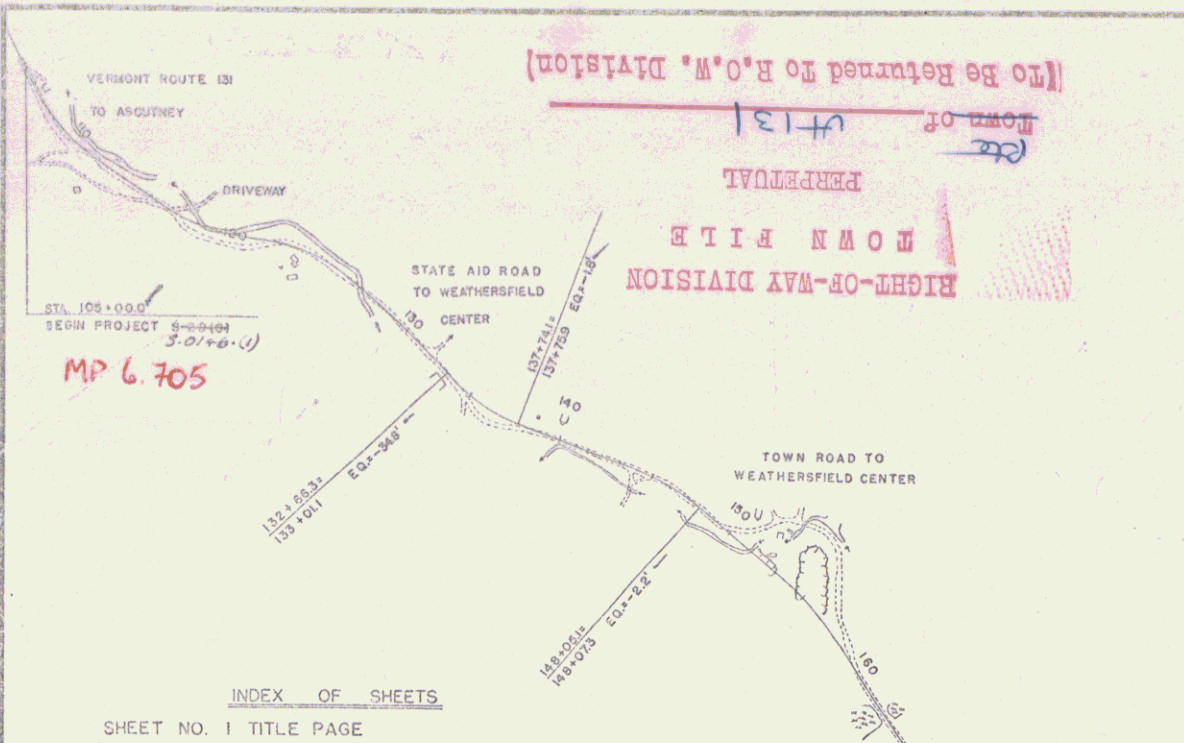
TOWN OF WEATHERSFIELD

COUNTY OF WINDSOR Pin# 99R 646

ASCUTNEY-AMSDEN ROAD

VERMONT ROUTE 131

BEGINNING AT A POINT 1.97 MILES FROM THE INTERSECTION OF U.S. ROUTE 5  
& VT. ROUTE 131 AND EXTENDING WESTERLY 22,725.3 FEET  
22,743.3  
LENGTH OF PROJECT 22,725.3 FEET 4.304 MILES  
22,743.3 4.307



INDEX OF SHEETS

SHEET NO. 1	TITLE PAGE
" 2	TYPICAL CROSS-SECTION OF IMPROVEMENT
" 3	ROADWAY STANDARD SHEET RS 56-1 (DANKING)
" 4	QUANTITY SHEET (ITEMS)
" 5	QUANTITY SHEET (DRAINAGE)
" 6-10	EARTHWORK SHEETS
" 11-27	PLAN & PROFILE SHEETS
" 28	DETAILS 15'-6" X 9'-5" CORR. GALV. METAL PLATE PIPE ARCH AT STA. 117+07 LT.
" 29	" 132" CORR. GALV. METAL PIPE AT STA. 151+39
" 30	ROADWAY STANDARD SHEET RS 56-3
" 31	" RS 56-4
" 32	" RS 56-6
" 33	" RS 56-9
" 34	" RS 56-11
" 35	" RS 56-12
" 36	" RS 57-9

37-119 CROSS-SECTIONS

PROJECT NAME & NUMBER	TYPE	PAVEMENT AREA
WEATHERSFIELD S 0146 (1)	SINGLE TACK COAT REFINED TAR & BLADE MIX PEA	50,541.5
RECORD PLANS	STONE SEAL WITH CUTBACK ASPHALT	

MATERIALS

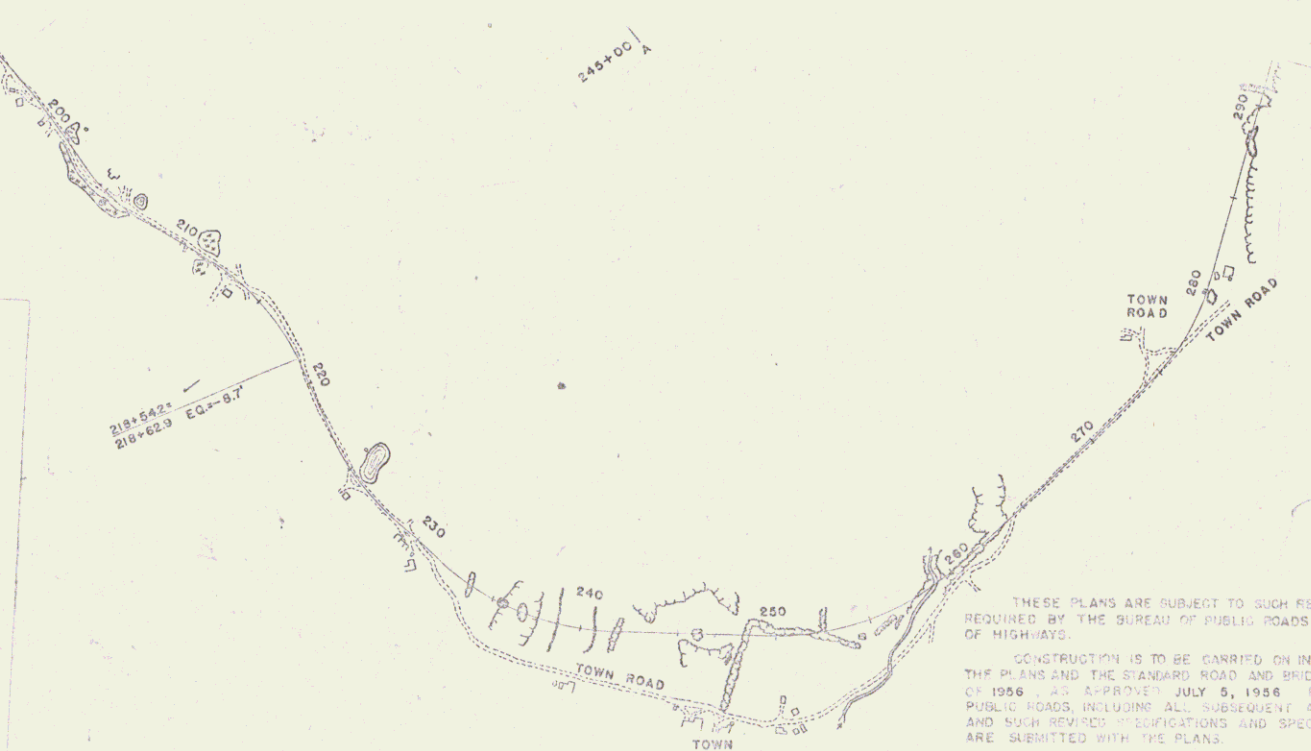
SUB-BASE OF GRAVEL - ROBINSON PIT - WEATHERSFIELD, VERMONT.  
SUB-BASE OF CALSHED HAVELL FINE GRADED - ROBINSON PIT - WEATHERSFIELD, VT.  
P.A. STONE FOR SEAL - PERKINSVILLE PIT - WEATHERSFIELD, VERMONT.  
REFINED TAR - OLD COLONY TAR CO. INC. - WORCESTER, MASSACHUSETTS  
CUTBACK ASPHALT - MOBIL OIL CO. - EAST PROVIDE ICE, RHODE ISLAND  
REINFORCED CONCRETE PIPE - VERMONT CONCRETE PIPE CO. - WINDSOR, VERMONT.  
ASPH. L.D. CORR. GALV. METAL PIPE - NORTHEASTERN CULVERT CO. - WESTMINSTER, PA.  
CABLE FOR GUARD RAIL - PAULSON-WEBBER CURD & CO. - SUNBURY, PA. VT.  
CORR. GALV. METAL PLATE PIPE ARCH - NORTHEASTERN CULVERT CO. - WESTMINSTER, PA. VT.

CONTRACTOR - FRANK W. WHITCOMB CONSTRUCTION CORP. CONTRACT DATED - SEPTEMBER 5, 1958.  
RESIDENT ENGINEER - ROGER C. GILMAN. CONTRACT STARTED - SEPTEMBER 11, 1958.  
INSPECTOR - P. ROBINSON. CONTRACT COMPLETED - SEPT. 19, 1959.  
RECORD PLANS - WM. RUPHY & A. SPIDLE. CONTRACT ACCEPTED - SEPT. 24, 1959.

CONVENTIONAL SIGNS

COUNTY LINE	-----	GROUND ELEVATION	-----
TOWN LINE	-----	GRADE ELEVATION	-----
FENCE LINE	-----	CURVE DATA	-----
STONE WALL	-----	DEFLECTION OF ANGLE	A
UNTEREED PROPERTY	-----	DEGREE OF CURVE	D
GUARD RAIL	-----	RADIUS OF CURVE	R
TRAVELED WAY	-----	TANGENT DISTANCE	T
RAILROAD	-----	LENGTH OF CURVE	L
RETAINING WALL	-----	EXTERNAL DISTANCE	E
CENTER LINE	-----	POINT OF INTERSECTION	P1
SURVEY LINE	-----	POINT OF CURVE	P2
CULVERT	-----	POINT OF TANGENT	P.T.
DROP INLET	-----	POINT ON TANGENT	POT
TROLLEY POLE	-----	POINT ON SUB-TANGENT	PCST
POWER POLE	-----		
TELEPHONE POLE	-----		
TRIP	-----		
WEDGE	-----		

TITLE: WEATHERSFIELD  
PROJECT: S 0146 (1)  
LENGTH: 4.307 MI.  
TYPE: SINGLE TACK COAT OF REFINED TAR AND BLADE MIX PEA  
STONE SEAL WITH CUTBACK ASPHALT.  
CONTRACTOR: FRANK W. WHITCOMB CONSTRUCTION CORP.  
BELLINGS FALLS, VERMONT.  
YEAR: 1958-59  
Location: Beginning at a point 1.97 miles from the intersection of U.S. Route 5 and Vermont Route 131 and extending westerly 22,743.3 feet.



APPROVED: <i>[Signature]</i> DATE: Aug 7, 1958	APPROVED: <i>[Signature]</i> DATE: <i>[Blank]</i>	APPROVED: <i>[Signature]</i> DATE: Aug 7, 1958	APPROVED: <i>[Signature]</i> DATE: 2/26/58	APPROVED: <i>[Signature]</i> DATE: Aug 7, 1958
---	--	---	---	---

DEPARTMENT OF COMMERCE  
BUREAU OF PUBLIC ROADS

APPROVED: *[Signature]*  
DIVISION: 5  
ENGINEER: 0146 (1)  
DATE: *[Blank]*

SHEET 1 OF 110 SHEETS

STEARNS R. JENKINS

4/13/51





#6C  
ALEXANDER O. & CHRISTINE BERNIER  
STA 131+65 - 133+80 LT  
0.12 ACRES  
WOOD 9/4/58  
RECORDED: WEATHERSFIELD-BK 36-PG 421-449  
8/1/58

CONST Drives  
133+35 RT  
134+50-20 RT  
139+42 LT  
141+25 LT  
137+50 RT  
144+25 RT

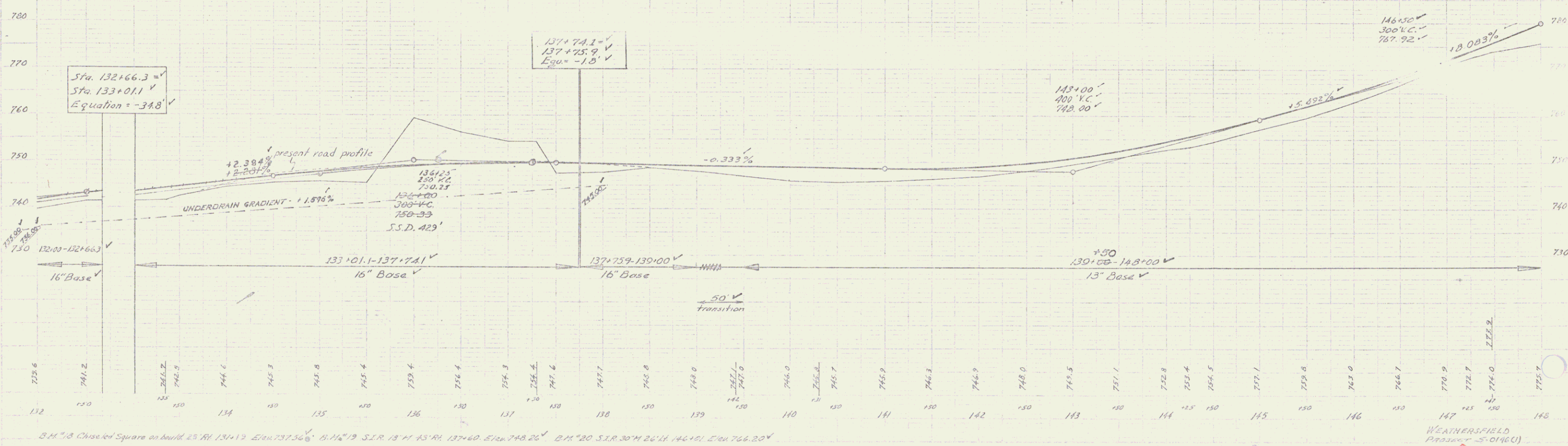
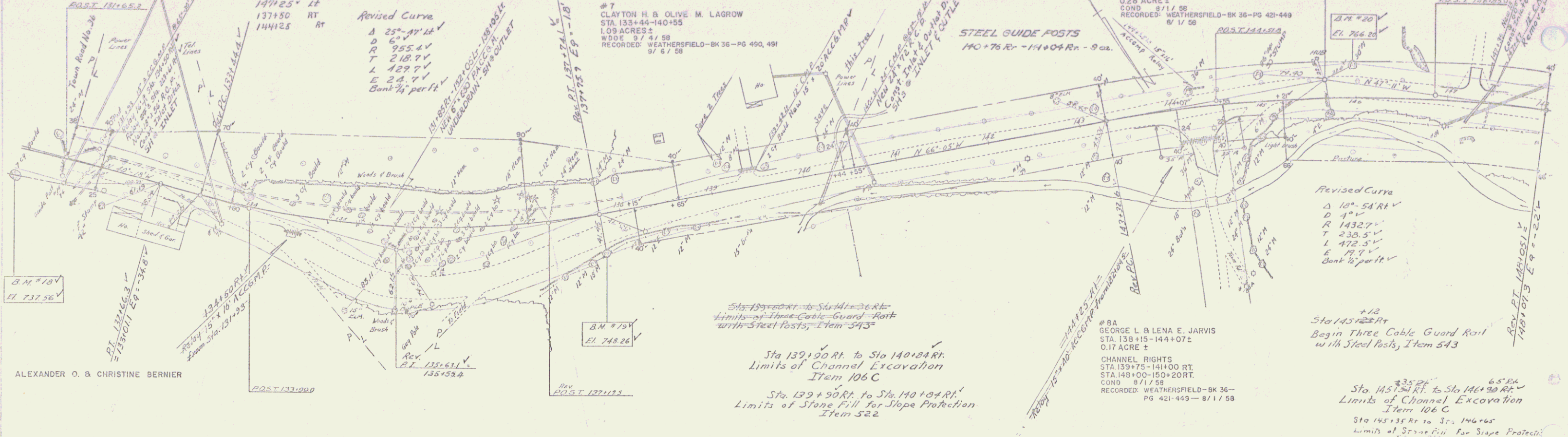
CONST Approach  
144+25 RT

Revised Curve  
Δ 25°-47' Lt  
D 6°  
R 955.4 V  
T 218.7 V  
L 429.7 V  
E 2.4 V  
Bank 1/2 part V

#7  
CLAYTON H. & OLIVE M. LAGROW  
STA 135+44-140+55  
1.08 ACRES  
WOOD 9/4/58  
RECORDED: WEATHERSFIELD-BK 36-PG 450, 491  
8/1/58

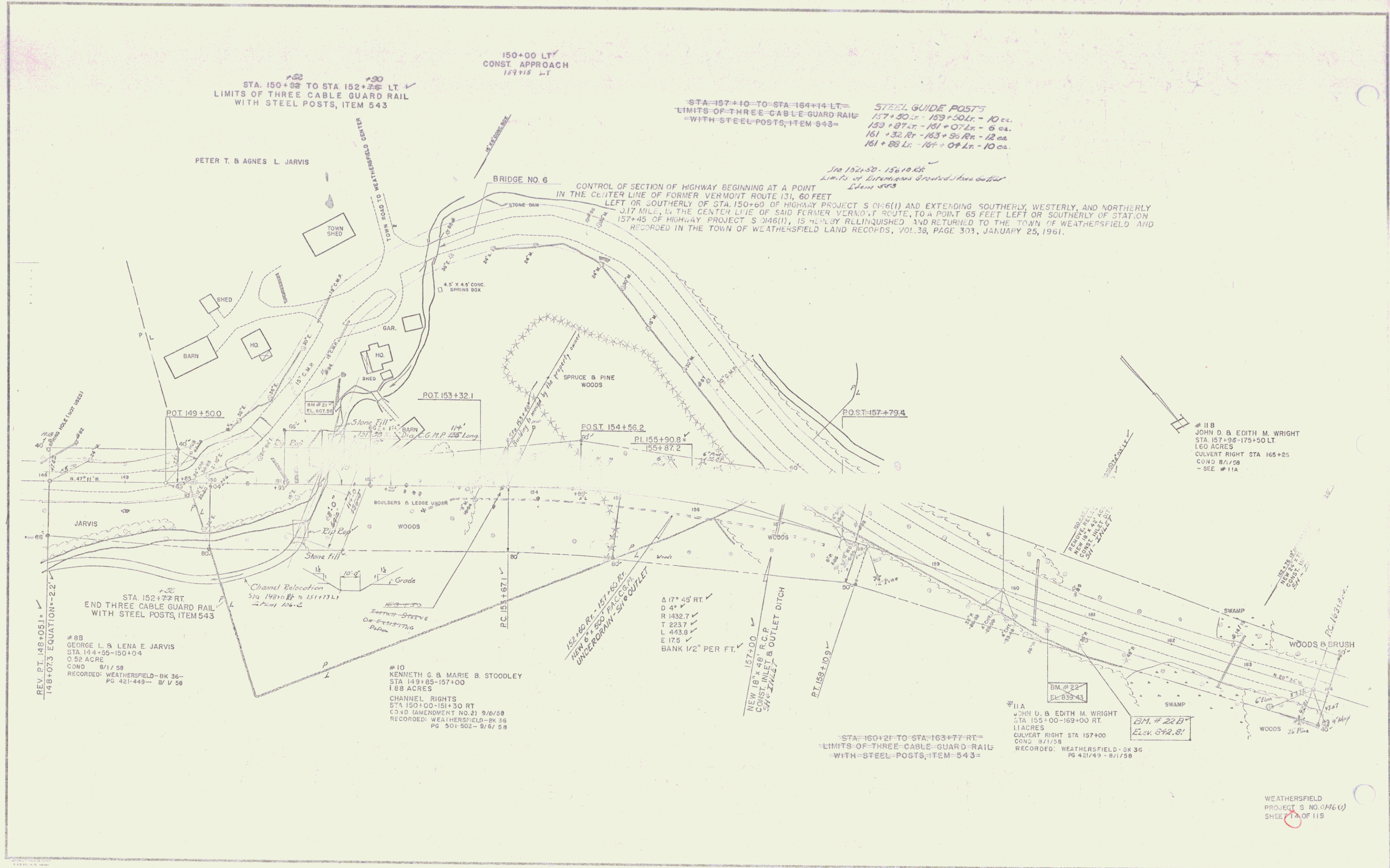
#9  
ERNEST E. & BERNICE A. FONTAINE  
STA 140+44-149+65  
0.28 ACRES  
COND 8/1/58  
RECORDED: WEATHERSFIELD-BK 36-PG 421-449  
8/1/58

#8A  
GEORGE L. & LENA E. JARVIS  
STA 138+15-144+07 E  
0.17 ACRES  
COND 8/1/58  
RECORDED: WEATHERSFIELD-BK 36-PG 421-449-8/1/58



B.M. 18 Chiswell Square on build. 25' RI 131+19 Elev. 737.36' B.M. 19 S.I.R. 13' H 45' RI 137+60 Elev. 748.26' B.M. 20 S.I.R. 30' H 26' RI 140+01 Elev. 766.20'

WEATHERSFIELD  
PRODUCTION 5-0146(C)  
SHEETS 10 OF 110 SHEETS



150+00 LT  
CONST. APPROACH  
159+18 LT

STA. 150+32 TO STA 152+28 LT  
LIMITS OF THREE CABLE GUARD RAIL  
WITH STEEL POSTS, ITEM 543

STA 157+10 TO STA 164+14 LT  
LIMITS OF THREE CABLE GUARD RAIL  
WITH STEEL POSTS, ITEM 543

STEEL GUIDE POSTS  
157+50 Lt - 159+50 Lt - 10 ea.  
159+87 Lt - 161+07 Lt - 8 ea.  
161+32 Rt - 163+56 Rt - 12 ea.  
161+88 Lt - 167+04 Lt - 10 ea.

BRIDGE NO. 6  
CONTROL OF SECTION OF HIGHWAY BEGINNING AT A POINT  
IN THE CENTER LINE OF FORMER VERMONT ROUTE 131, 60 FEET  
LEFT OR SOUTHERLY OF STA. 150+60 OF HIGHWAY PROJECT S 0146(1) AND EXTENDING SOUTHERLY, WESTERLY, AND NORTHERLY  
317 MILE, IN THE CENTER LINE OF SAID FORMER VERMONT ROUTE, TO A POINT 65 FEET LEFT OR SOUTHERLY OF STATION  
157+45 OF HIGHWAY PROJECT S 0146(1), IS HEREBY RELINQUISHED AND RETURNED TO THE TOWN OF WEATHERSFIELD AND  
RECORDED IN THE TOWN OF WEATHERSFIELD LAND RECORDS, VOL. 38, PAGE 303, JANUARY 25, 1961.

REV. DT. 148+051+  
148+073 EQUATION = 22

STA. 152+77 RT  
END THREE CABLE GUARD RAIL  
WITH STEEL POSTS, ITEM 543

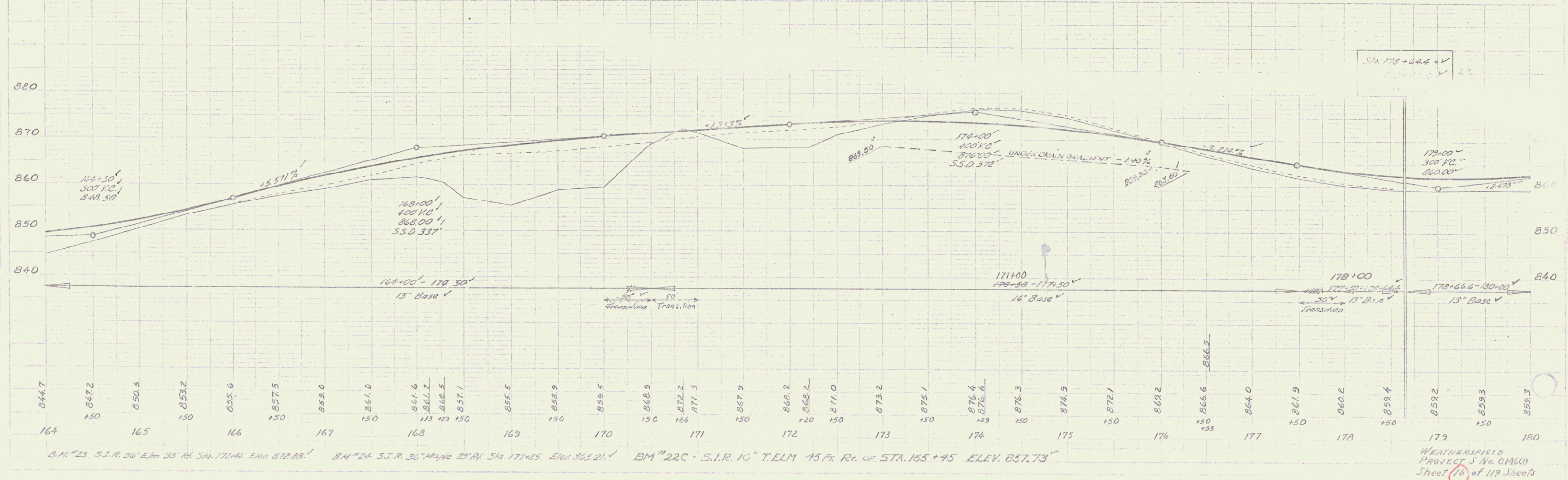
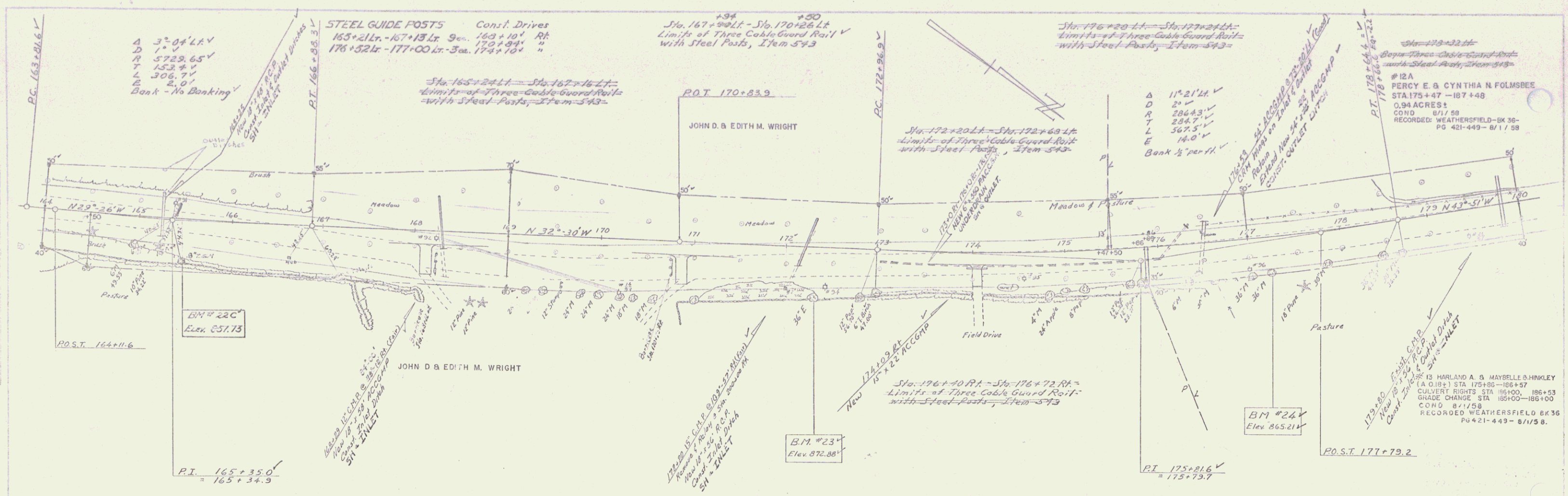
#88  
GEORGE L. & LENA E. JARVIS  
STA. 148+55-150+04  
0.52 ACRES  
COND. 9/1/58  
RECORDED: WEATHERSFIELD-BK 36-  
PG 421-448- 8/1/58

#10  
KENNETH G. & MARIE B. STODLEY  
STA. 149+05-157+00  
1.88 ACRES  
CHANNEL RIGHTS  
STA. 150+00-151+30 RT  
C.O.D. (AMENDMENT NO. 21) 9/6/58  
RECORDED: WEATHERSFIELD-BK 36  
PG 501-502- 9/6/58

STA. 160+21 TO STA. 163+77 RT  
LIMITS OF THREE CABLE GUARD RAIL  
WITH STEEL POSTS, ITEM 543

#11A  
JOHN D. & EDITH M. WRIGHT  
STA. 155+00-169+00 RT  
1.1 ACRES  
CULVERT RIGHT STA. 157+00  
COND. 8/1/58  
RECORDED: WEATHERSFIELD-BK 36  
PG 421/49- 8/1/58

WEATHERSFIELD  
PROJECT S NO. 0146(1)  
SHEET 11 OF 119



As Shown on  
 Plans  
 of  
 the  
 Road  
 from  
 Sta. 164+00  
 to  
 Sta. 177+00  
 on  
 the  
 Plans  
 of  
 the  
 Road  
 from  
 Sta. 164+00  
 to  
 Sta. 177+00  
 on  
 the  
 Plans  
 of  
 the  
 Road  
 from  
 Sta. 164+00  
 to  
 Sta. 177+00

As Shown on  
 Plans  
 of  
 the  
 Road  
 from  
 Sta. 164+00  
 to  
 Sta. 177+00  
 on  
 the  
 Plans  
 of  
 the  
 Road  
 from  
 Sta. 164+00  
 to  
 Sta. 177+00

B.M. #23 S.I.R. 36' Elev 35' Rt. Sta. 172+41. Elev 872.89' B.M. #24 S.I.R. 36' Maple 23' Rt. Sta. 177+85. Elev 865.21' B.M. #22C - S.I.R. 10' TELM 45' Ft. Rt. of STA. 165+45 ELEV. 857.73' WEATHERFIELD PROJECT No. DM60 Sheet 16 of 119 Sheets

POOR ORIGINAL COPY

**STEEL GUIDE POSTS**  
 Const Drives  
 183+71 Lt. - 185+83 Lt. - 15 ea. 191+25  
 185+70 Lt. - 187+82 Lt. - 13 ea. 194+30

PERCY E. & CYNTHIA N. FOLMSBEE

Sta. 192+25 - 195+23 Lt.  
 Limits of Excavation Channel 15' from 186+0

Construct Approach  
 189+10

Sta. 186+00 to 190+00  
 Limits of Three Cable Guard-Rail  
 with Steel Posts, Item 543

P.I. 184+51.7  
 = 184+51.0  
 Limits of Channel Excavation  
 182+07.76 185+23 Lt

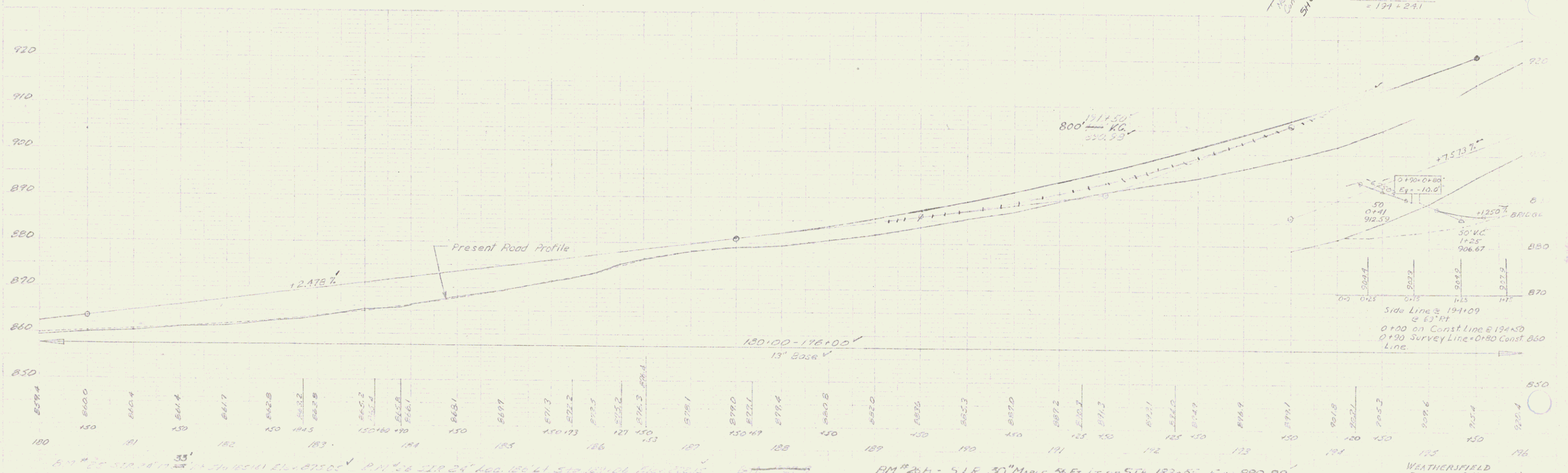
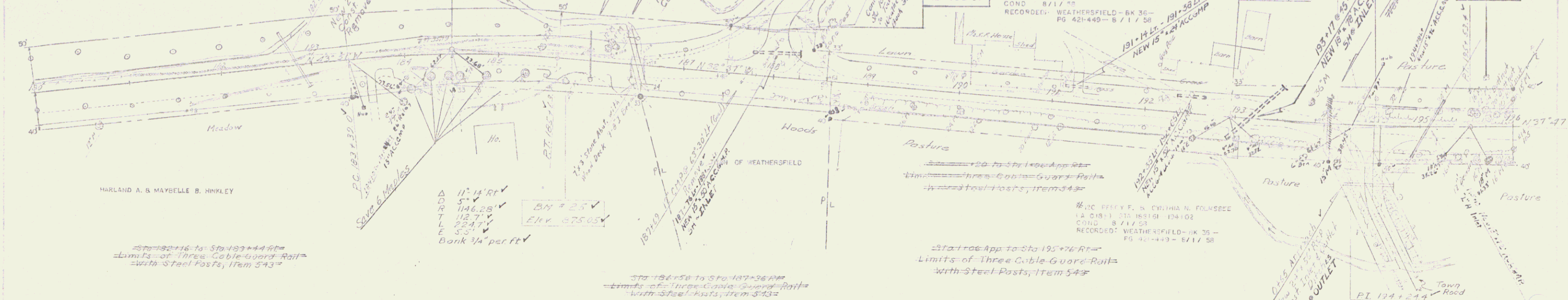
BM # 26  
 Elev. 882.15

$\Delta$  05° 10' Lt ✓  
 D 2' ✓  
 R 2864.93' ✓  
 T 129.3' ✓  
 E 2.9' ✓  
 Bank 1/2" per ft ✓

Sta. 193+21 to Sta. 195+29 - L. = 238.3'  
 Limits of Three Cable Guard-Rail  
 with Steel Posts, Item 543

P.O.T. 194+09  
 $\Delta$  63° 20' Rt ✓  
 P.C. 192+25.1 ✓

BM # 27C  
 Elev. 923.10

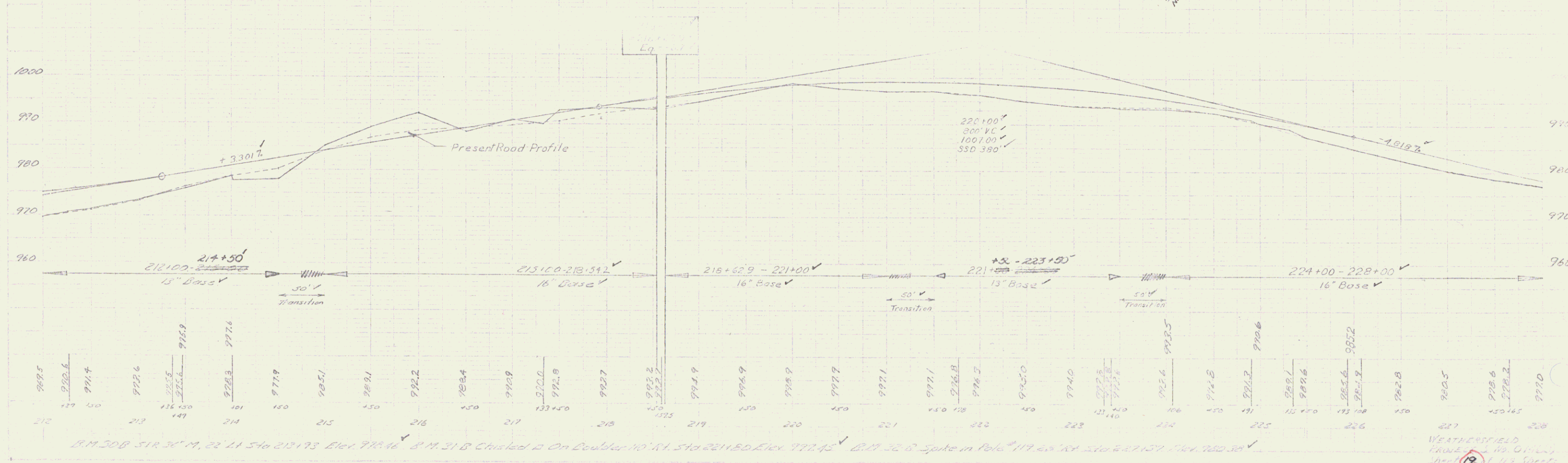
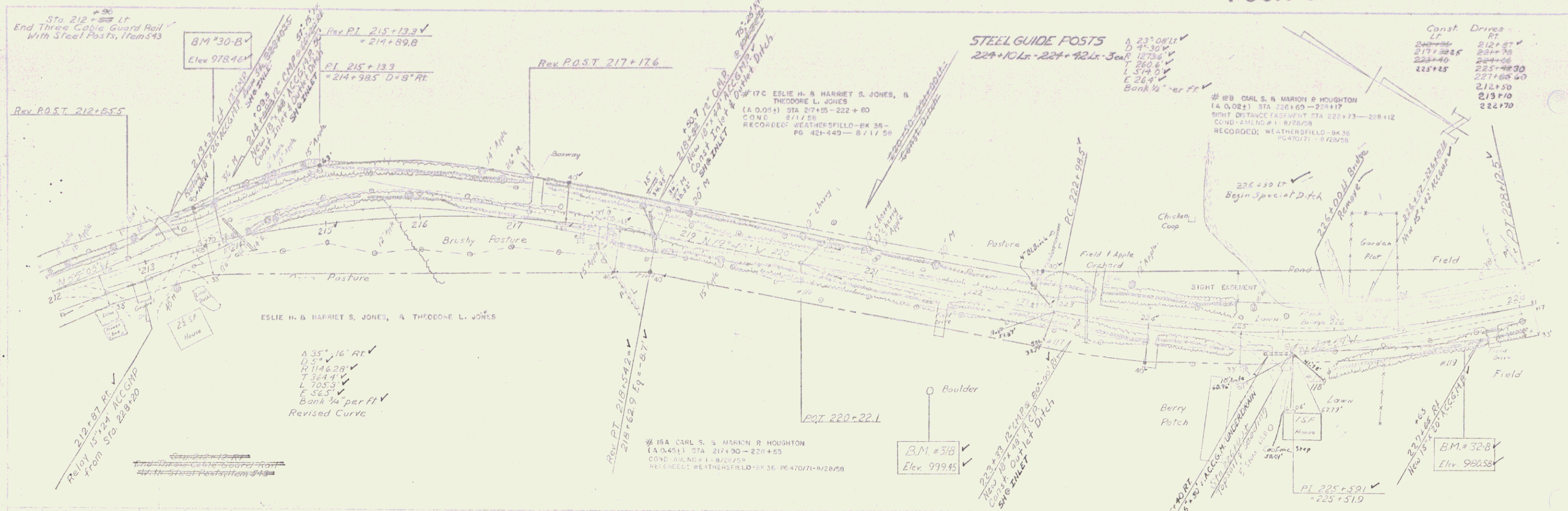


BM # 26B - S.I.R. 30" MAPLE 36 Ft. Lt. of STA. 183+33 Elev. 880.89  
 BM # 27C - S.I.R. 10" ELM 50 Ft. Lt. of STA. 195+70 Elev. 923.10

WEATHERFIELD  
 PROJECT 3 No. 01-26(1)  
 Sheet 17 of 119 Sheets

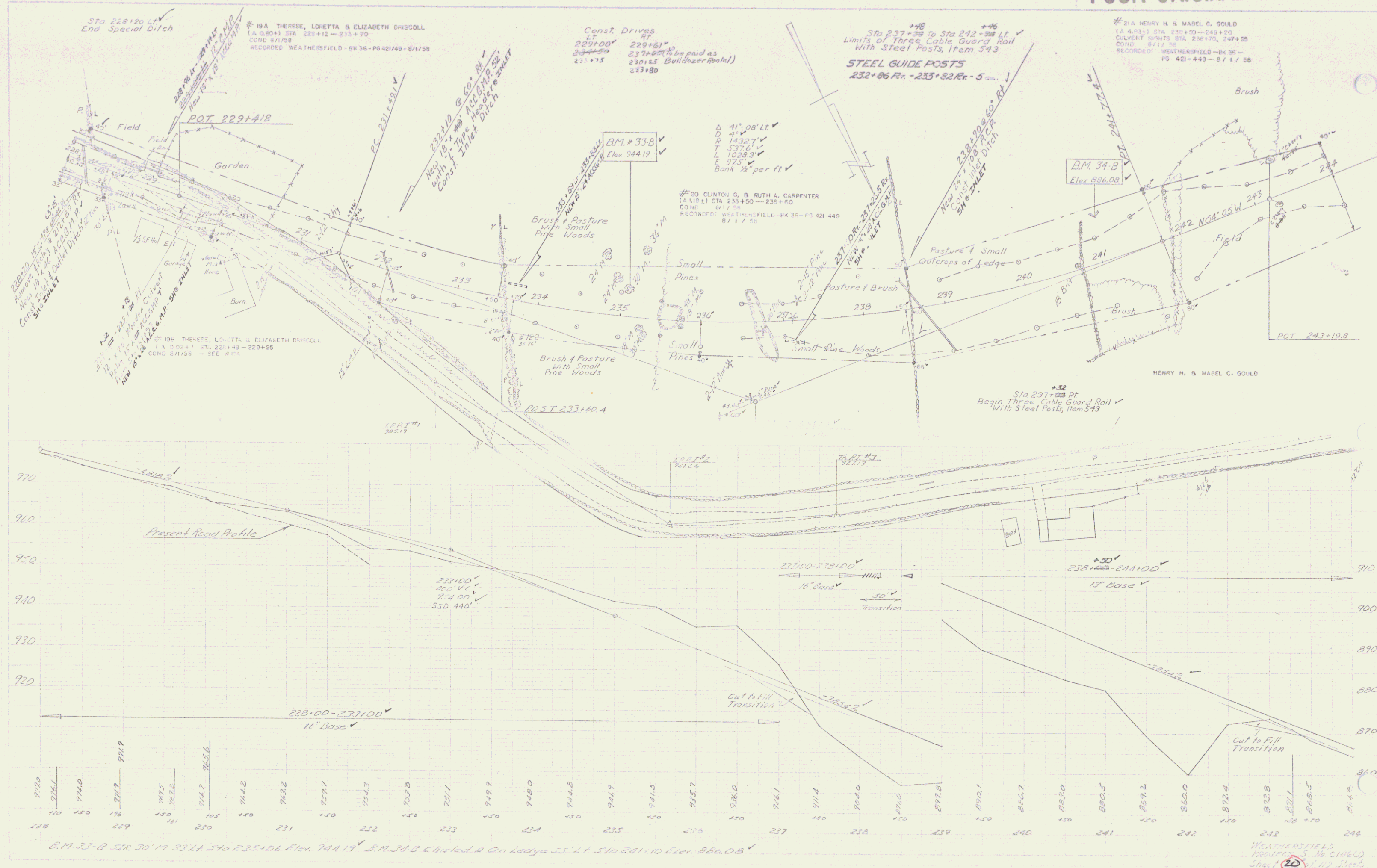


POOR ORIGINAL COPY



BM 30B Spk in Pole 17' Sta 224+17 Elev 971.45 BM 31B Chisled 2 On Boulder 10' Sta 221+80 Elev 971.45 BM 32B Spike in Pole 17' Sta 224+17 Elev 971.45

POOR ORIGINAL COPY



WEATHERSFIELD PROJECT No. C1160 Sheet 20 of 117

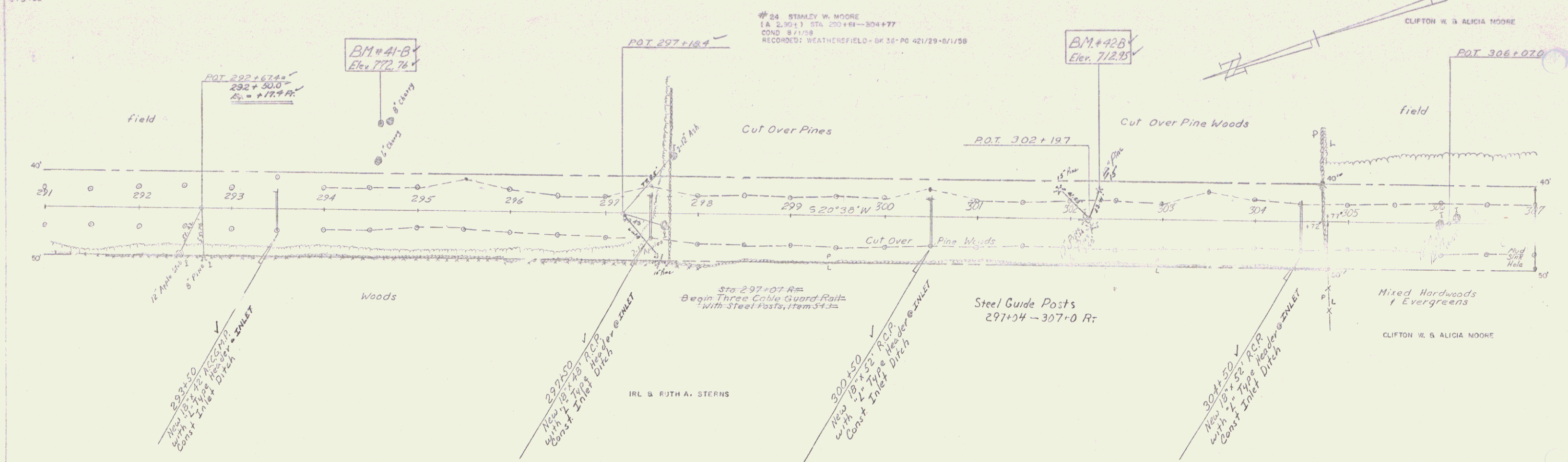






Const. Drives  
LT RT  
293+60

#24 STANLEY W. MOORE  
[A 2,90+1] STA. 290+00-304+77  
COND. 8/1/58  
RECORDED: WEATHERSFIELD - BK 35- PG 421/29-0/1/58



STANLEY W. MOORE  
25 S. HENRIETTA  
ST. LOUIS, MO. 63104

STANLEY W. MOORE  
25 S. HENRIETTA  
ST. LOUIS, MO. 63104

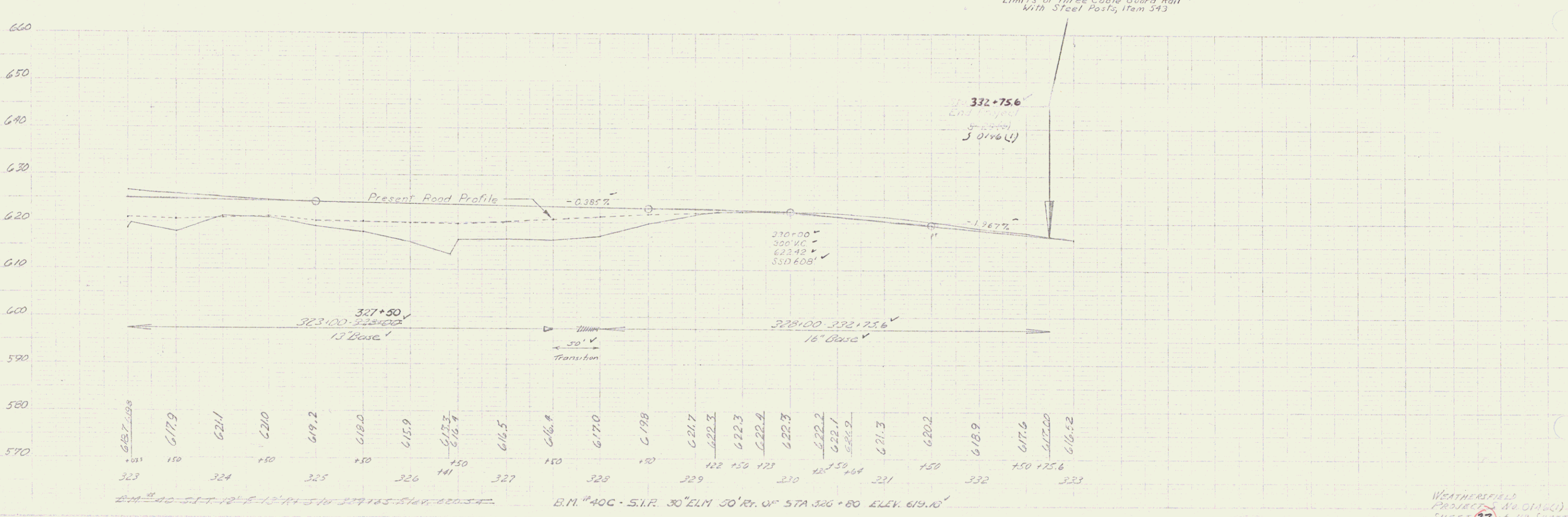
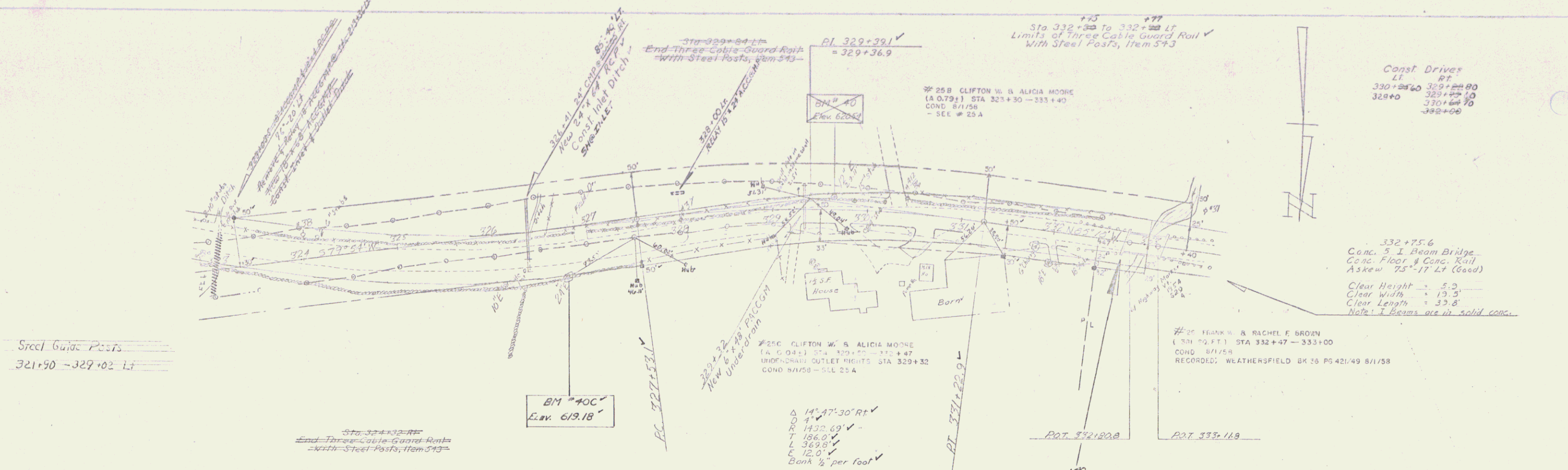
B.M. 41 B. Chisled 4 On Ledge 73' LA 540 294+60 Elev. 772.76  
B.M. 42 B. S.I.R. 13" Pine 32' LA 540 302+00 Elev. 712.95

WEATHERSFIELD  
PROJECT NO. 01400  
SHEET 25 OF 119 SHEETS



25 Feet from 1/25

4/25  
1/25  
1/25  
1/25  
1/25



Const. Drives

LT	RT
330+25.60	329+25.00
329+00	330+25.10
330+65.70	332+00

332+75.6  
Conc. 5 I Beam Bridge  
Conc. Floor & Conc. Rail  
Askew 75'-17" Lt (Good)  
Clear Height = 5.0  
Clear Width = 13.5  
Clear Length = 33.8  
Note: I Beams are in solid conc.

#25 FRANK & RACHEL E. BROWN  
(531 SQ. FT.) STA 332+47 - 333+00  
COND. 8/1/58  
RECORDED: WEATHERSFIELD BK 26 PG 421/49 8/1/58

WEATHERSFIELD PROJECT NO. 014061  
SHEET 27 OF 10 SHEETS