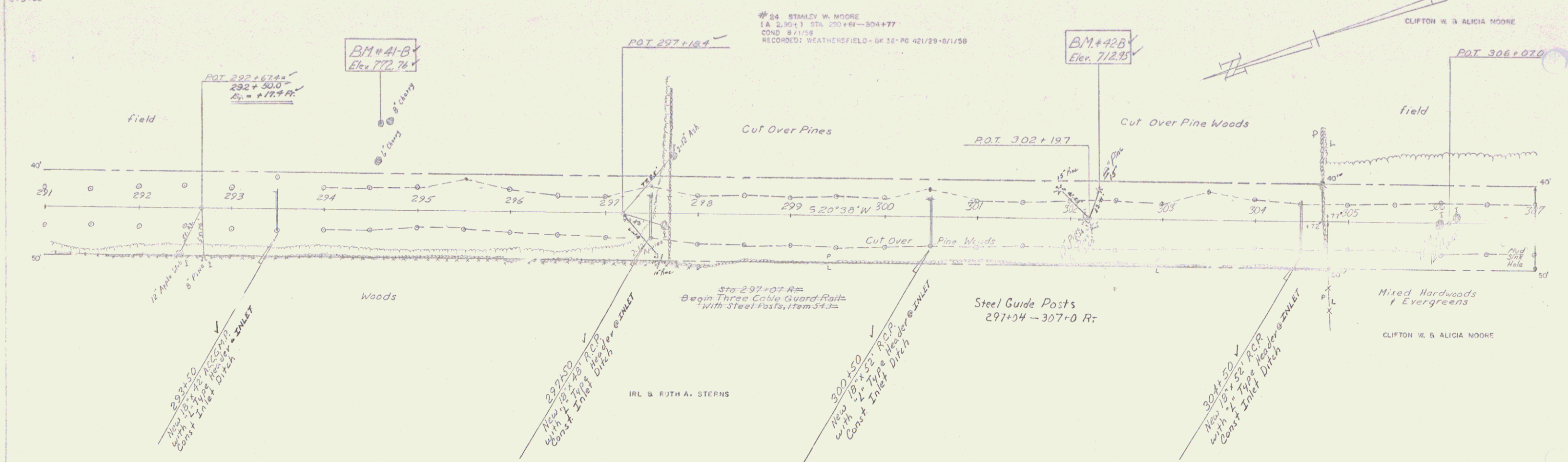


Const. Drives  
LT RT  
293+60

#24 STANLEY W. MOORE  
[A 2,90+1] STA. 290+60-304+77  
COND. 8/1/58  
RECORDED: WEATHERSFIELD - BK 35- PG 421/29-8/1/58



STANLEY W. MOORE  
CLAYTON W. & ALICIA MOORE

CLAYTON W. & ALICIA MOORE  
PROJECT NO. 01450  
SHEET 25 OF 112 SHEETS

WEATHERSFIELD  
PROJECT NO. 01450  
SHEET 25 OF 112 SHEETS