

**INDEX OF SHEETS**

SHEET NO. 1	TITLE PAGE
2	TYPICAL CROSS SECTION OF IMPROVEMENT (DOUBLE TACK COAT OF REFINED TAR WITH PEASTONE SEAL, CLASS A ITEM 312-A)
3	BANKING AND WIDENING TABLES
4	QUANTITY SHEET (ITEMS AND DRAINAGE)
5-6	EARTHWORK SHEETS
7-11	PLAN AND PROFILE SHEETS
12	CONSTRUCTION DETAILS - CD (DRAINAGE AND MARKERS)
13	CONSTRUCTION DETAILS - CD (DITCHES)
14	STANDARD STRUCTURE SHEET S-53-48 (PRECAST DROP INLETS)
15	STANDARD STRUCTURE SHEET S-40 (BARRICADES, SIGNS AND LIGHTS)
16	STANDARD STRUCTURE SHEET S-45-45 (GUARD RAIL)
17-43	CROSS SECTIONS

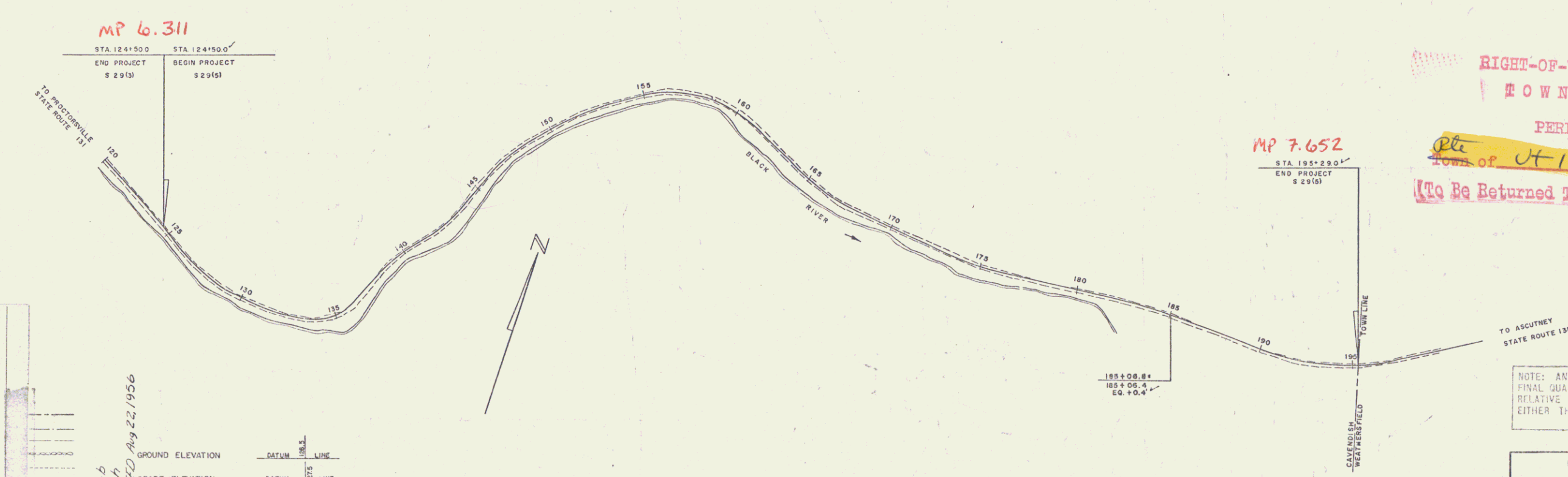
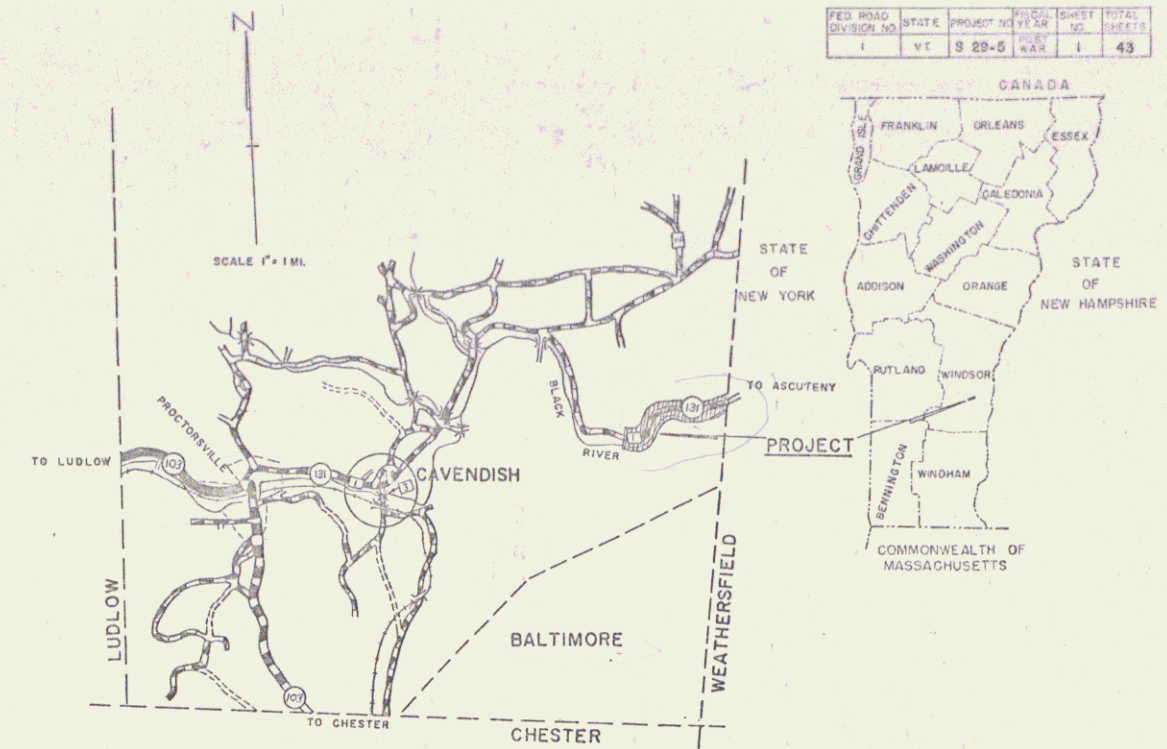
STANDARD STRUCTURE SHEET APPROVED BY THE CHIEF ENGINEER, VERMONT STATE DEPARTMENT OF HIGHWAYS  
S-40 JUNE 10, 1950

STATE OF VERMONT  
DEPARTMENT OF HIGHWAYS  
**PROPOSED IMPROVEMENT**  
FEDERAL AID  
SECONDARY PROJECT

**TOWN OF CAVENDISH**  
COUNTY OF WINDSOR  
STATE AID ROUTE 1  
**CAVENDISH-DOWNERS ROAD**  
Pin# 99R 643

BEGINNING AT POINT 7079.4 FEET WEST OF THE CAVENDISH-WEATHERSFIELD TOWN LINE AND EXTENDING EASTERLY 7,079.4 FEET.  
LENGTH OF PROJECT 7,079.4 FT. = 1.341 MI.

PROJECT NAME & NUMBER	TYPE	PAVEMENT AREA
Cavendish S 29(5)	Double Tack Seal	16,009 SY
RECORD PLANS		
MATERIALS		
SUB-BASE OF GRAVEL	Robinson Ft. Wentworth	ACCGMP Berger Metal Culvert Co. Westminster
REFINED TAR	Koppers Prod. Co. Everett, Mass	STONE FILL Rock from project
PEASTONE FOR SEAL	Whitcomb Plant, W. Walpole, N.H.	CABLE FOR GUARD RAIL American Steel Wire Co. New Haven, Conn.
CONTRACTOR	Frank W. Whitcomb	CONTRACT DATED August 5, 1955
RESIDENT ENGR	E. H. Latham, D. W. Allen	CONTRACT STARTED August 8, 1955
INSPECTORS		CONTRACT COMPLETED August 22, 1956
RECORD PLANS	A. Abrich	CONTRACT ACCEPTED August 28, 1956



PROJECT: Cavendish  
ROUTE: S 29(5)  
LENGTH: 1.341 MI.  
TYPE: Dbl. Tack Ref. Tar 7-P. Sln. Seal  
CONTRACTOR: Frank W. Whitcomb  
YEAR: 1956  
LOCATION: Begin 7079.4 ft. west of Cavendish-Weathersfield town line and extend easterly 7,079.4 ft.

CAVENDISH S 29(5)  
CONTR. Frank W. Whitcomb  
RECORD PLANS - A. Abrich  
CONSTRUCTION COMPLETED Aug 22, 1956

GROUND ELEVATION	DATUM	LINE
GRADE ELEVATION	DATUM	LINE

CURVE DATA  
DEFLECTION OF ANGLE ..... Δ  
DEGREE OF CURVE ..... D  
RADIUS OF CURVE ..... R  
TANGENT DISTANCE ..... T  
LENGTH OF CURVE ..... L  
EXTERNAL DISTANCE ..... E  
POINT OF INTERSECTION ..... P.I.  
POINT OF CURVE ..... P.C.  
POINT OF TANGENT ..... P.T.  
POINT ON TANGENT ..... P.O.T.  
POINT ON SUB-TANGENT ..... P.O.S.T.

SCALES

TITLE	1" = 300'
TYPICAL	1" = 2'
PLAN	1" = 50'
PROFILE HORIZONTAL	1" = 10'
PROFILE VERTICAL	1" = 10'
CROSS-SECTIONS	1" = 5'

RIGHT-OF-WAY DIVISION  
TOWN FILE  
PERPETUAL  
Plt. of J-13  
(To Be Returned To R.O.W. Division)

NOTE: ANY FURTHER INFORMATION CONCERNING FINAL QUANTITIES, AMOUNTS OR OTHER DETAILS RELATIVE TO THIS PROJECT MAY BE FOUND IN EITHER THE FIELD BOOKS OR THE ESTIMATE FILE.

DEPARTMENT OF COMMERCE  
BUREAU OF PUBLIC ROADS

THESE PLANS ARE SUBJECT TO SUCH REVISIONS AS MAY BE REQUIRED BY THE BUREAU OF PUBLIC ROADS OR THE COMMISSIONER OF HIGHWAYS.  
CONSTRUCTION IS TO BE CARRIED ON IN ACCORDANCE WITH THE PLANS AND THE STANDARD ROAD AND BRIDGE SPECIFICATIONS OF 1948, AS APPROVED JULY 25, 1949 BY THE BUREAU OF PUBLIC ROADS, INCLUDING ALL SUBSEQUENT APPROVED REVISIONS AND SUCH REVISED SPECIFICATIONS AND SPECIAL PROVISIONS AS ARE SUBMITTED WITH THE PLANS.

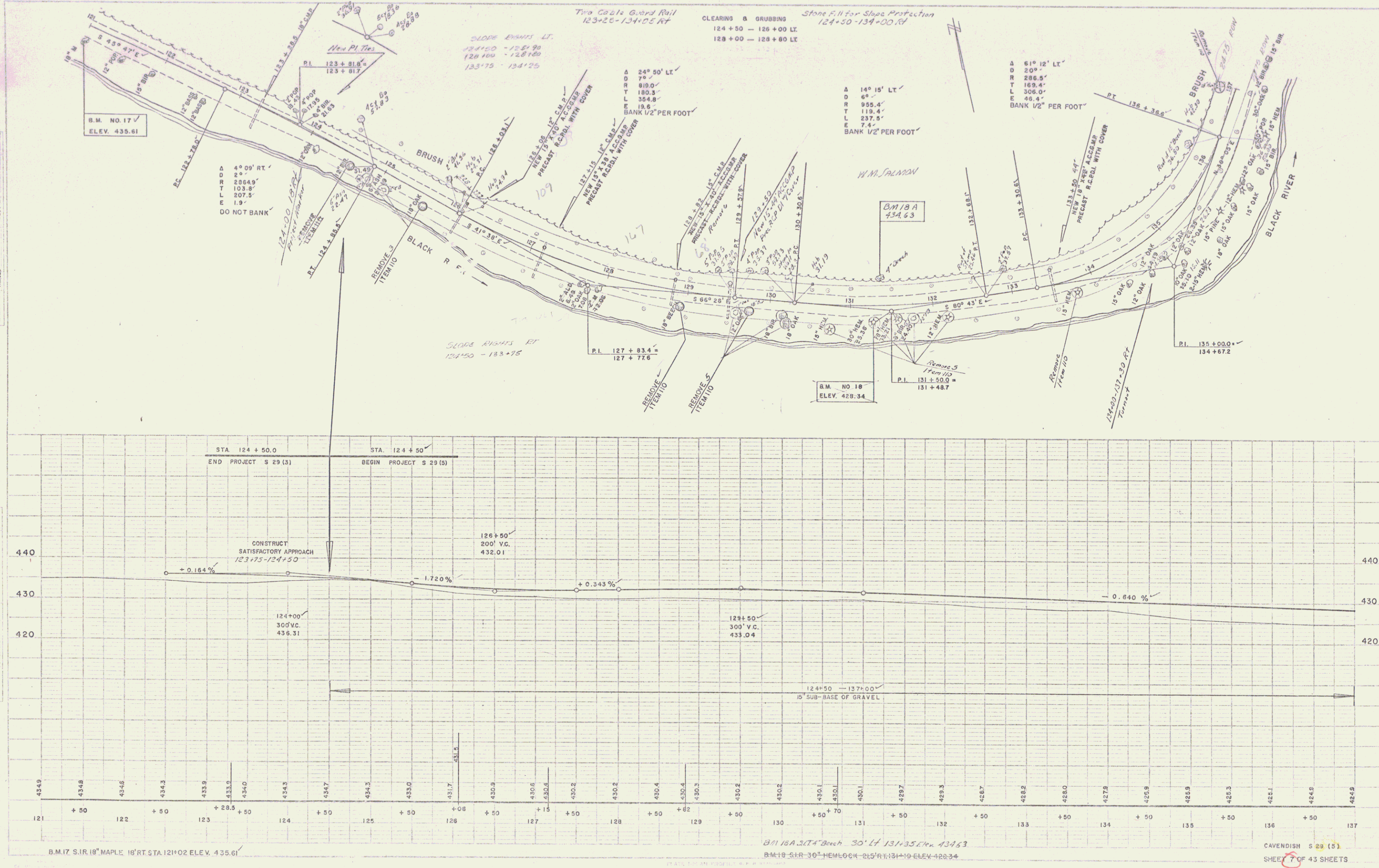
APPROVED DATE	APPROVED DATE	APPROVED DATE	APPROVED DATE
CONSTRUCTION ENGINEER	DISTRICT ENGINEER	DESIGNED	APPROVED
		16 Feb 1955	16 Feb 1955

APPROVED  
DISTRICT ENGINEER  
DATE  
PROJECT S NO. 29(5)  
SHEET 1 OF 43 SHEETS

STEARNS & JENKINS  
44131

LAYOUT  
 WESTER-MARTIN INC. 1934  
 WESTER-MARTIN INC. 1934  
 SCALE 1" = 40'  
 DATE 10/15/34  
 SHEET 7 OF 43 SHEETS

PLAN  
 WESTER-MARTIN INC. 1934  
 WESTER-MARTIN INC. 1934  
 SCALE 1" = 40'  
 DATE 10/15/34  
 SHEET 7 OF 43 SHEETS



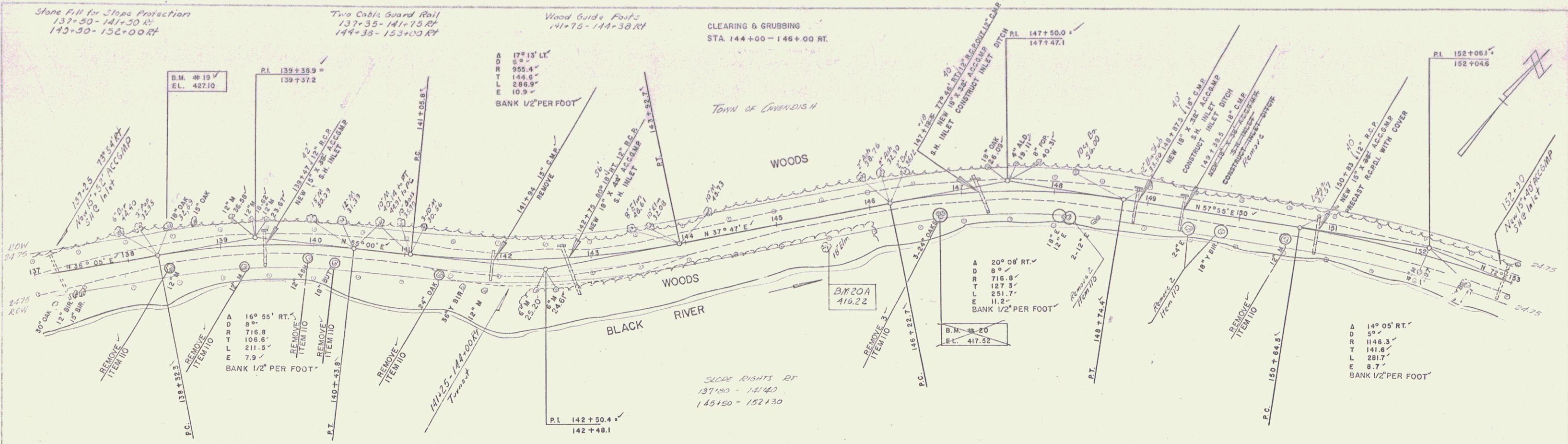
Stone Fill for Slope Protection  
137+90-141+50 RT  
143+50-152+00 RT

Two Cables Guard Rail  
137+35-141+75 RT  
144+38-153+00 RT

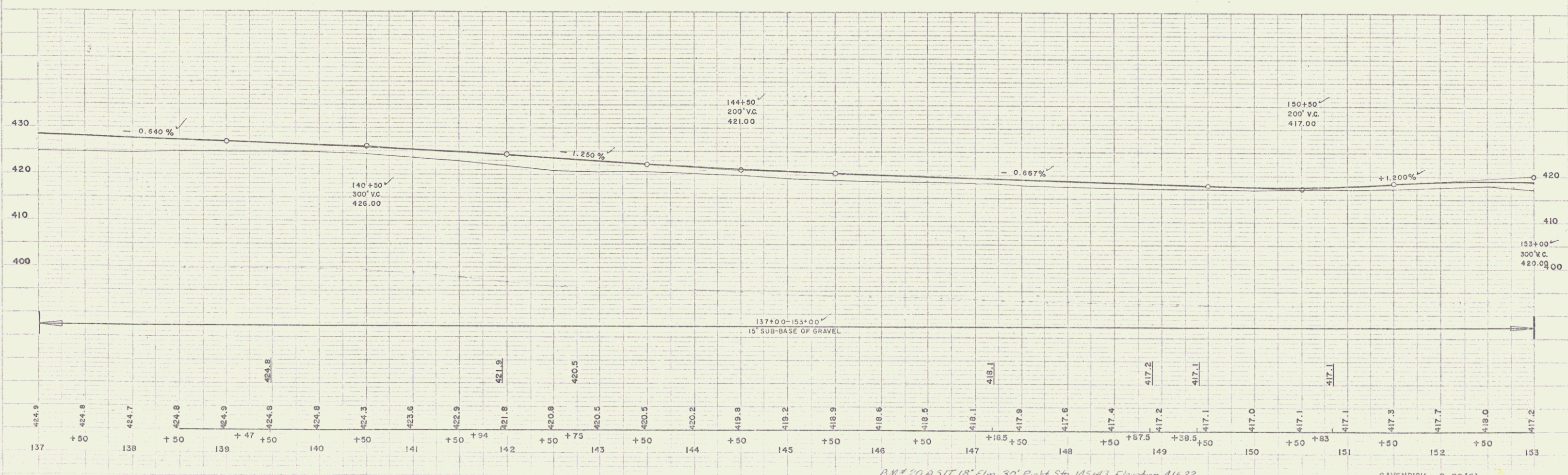
Wood Guide Posts  
141+75-144+38 RT

CLEARING & GRUBBING  
STA. 144+00-146+00 RT.

LAVIN  
WEBSTER-MARTIN INC. 1954  
WEBSTER-MARTIN INC. 1954  
TRACED



LAVIN  
WEBSTER-MARTIN INC. 1953  
WEBSTER-MARTIN INC. 1954



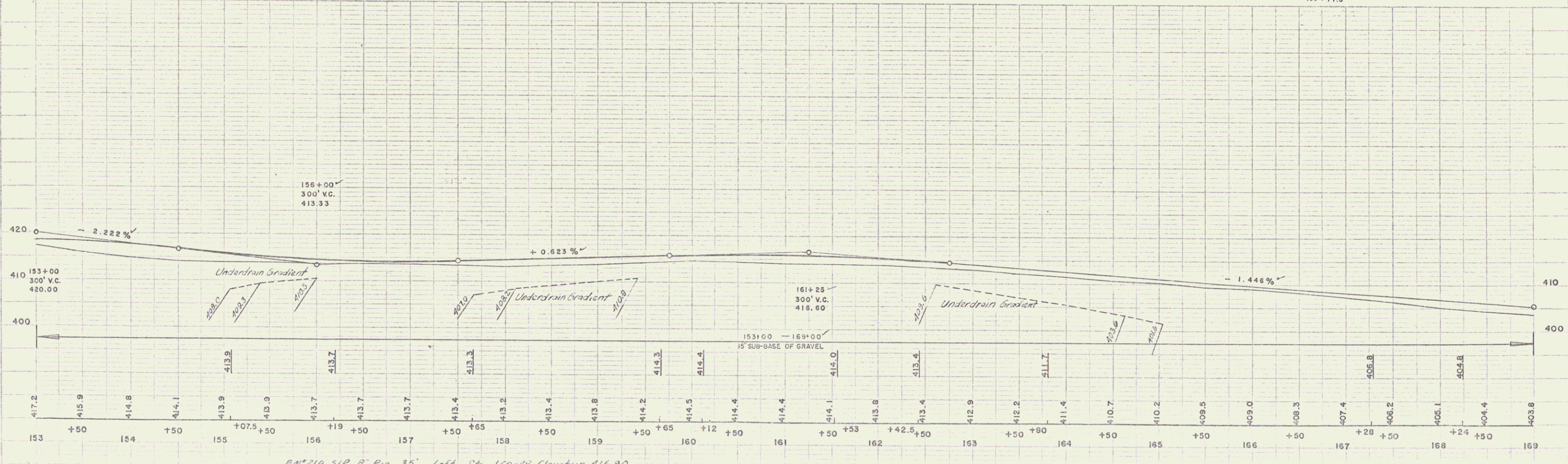
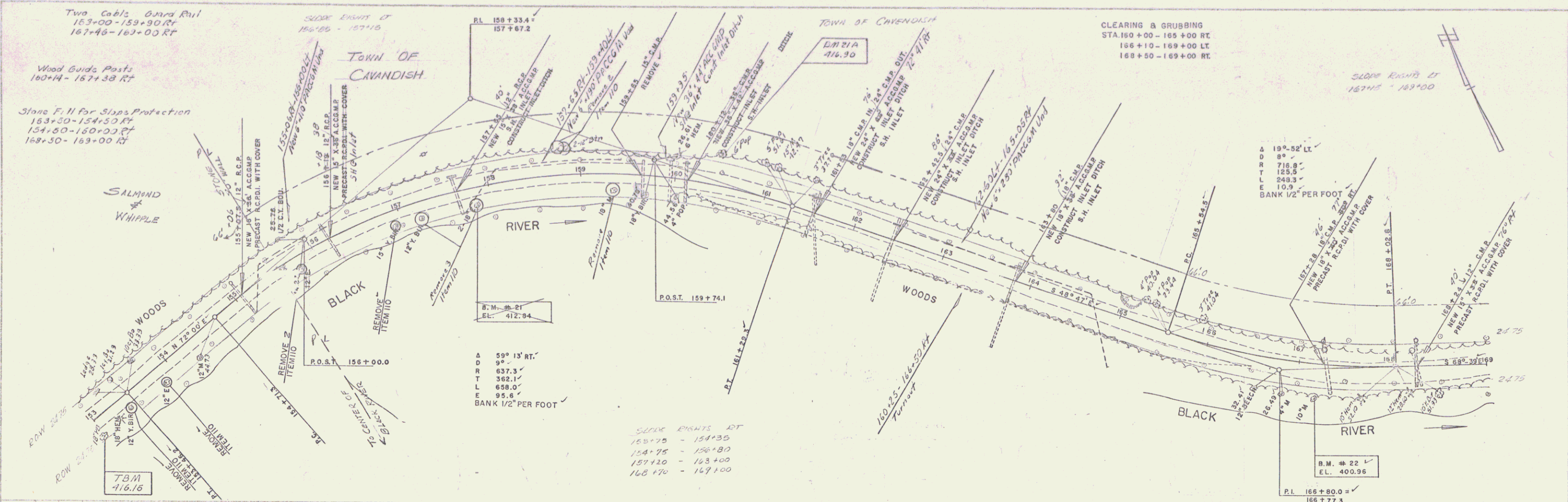
B.M. # 19 S.I.R. 18" OAK 26.0' LEFT STA. 138+50 ELEVATION 427.10'

B.M. # 20 A.S.T. 18" Elm 30' Right Sta. 145+43 Elevation 416.22  
B.M. # 20 S.L.T. 24" OAK 18.5' RIGHT STA. 146+76 ELEVATION 417.52

CAVENDISH S 29(5)  
SHEET 6 OF 43 SHEETS

1953  
LAVIN  
WEBSTER-MARTIN INC. 1954  
1954  
WEBSTER-MARTIN INC. 1954  
TRACED

1953  
LAVIN  
WEBSTER-MARTIN INC. 1954



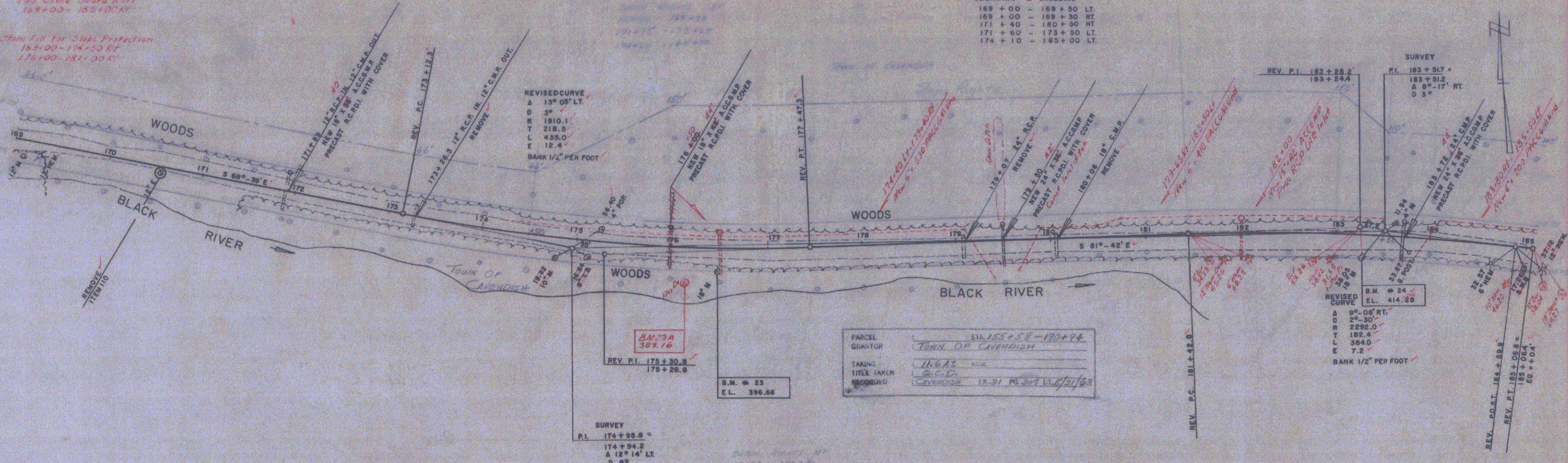
B.M. # 21 S.I.T. 18" ELM 20.0' RIGHT STA. 157+02 ELEVATION 412.84  
 T.B.M. S.I.T. 15" 18" RIGHT STA. 153+00 ELEVATION 416.15  
 B.M. # 22 S.I.R. 10" MAPLE 38.0' RIGHT STA. 167+18 ELEVATION 400.96  
 CAVENDISH S 29 (5) SHEET 9 OF 43 SHEETS

1853  
LAWIN  
WEBSTER-MARTIN INC. 1954  
TRACED

1853  
LAWIN  
WEBSTER-MARTIN INC. 1954

*Two Extra Guard Poles  
169+00 - 185+00*

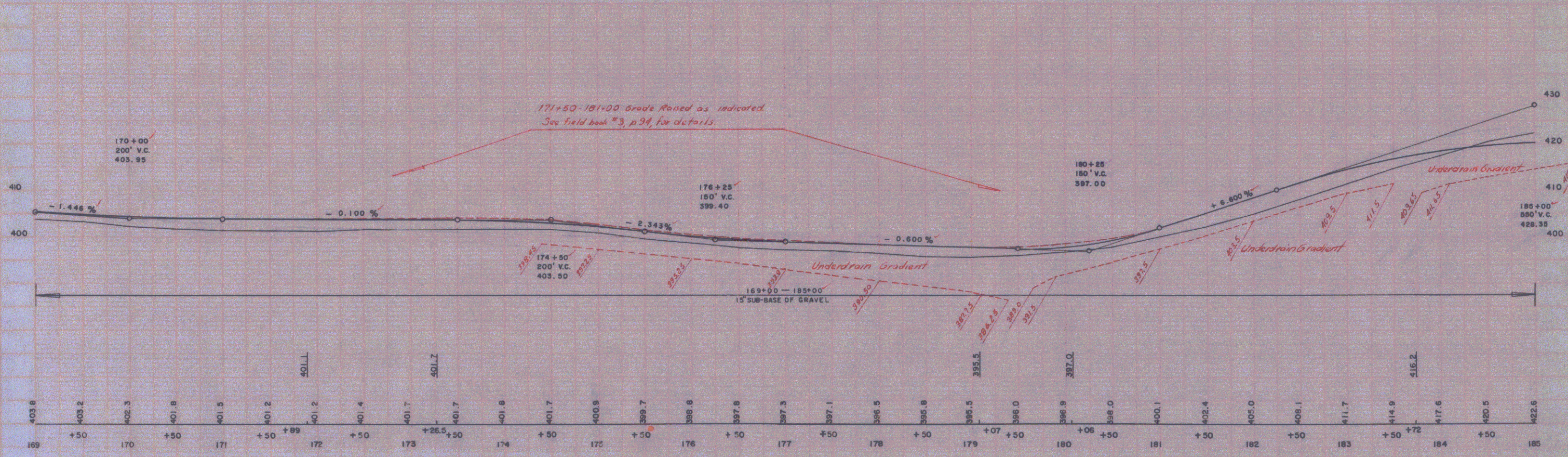
*Three Poles For SNA Protection  
169+00 - 174+50 RT  
176+00 - 181+00 LT*



CLEARING & GRUBBING

169 + 00 - 169 + 50	LT
169 + 00 - 169 + 30	RT
171 + 40 - 180 + 30	RT
171 + 60 - 173 + 50	LT
174 + 10 - 185 + 00	LT

PARCEL	SIA 152+58-170+94
QUANTOR	TOWN OF CAVENDISH
TAXING	11.642
TITLE TAKEN	SIC.D.
RECORDED	18-91 PL 207 VL 2/1/63



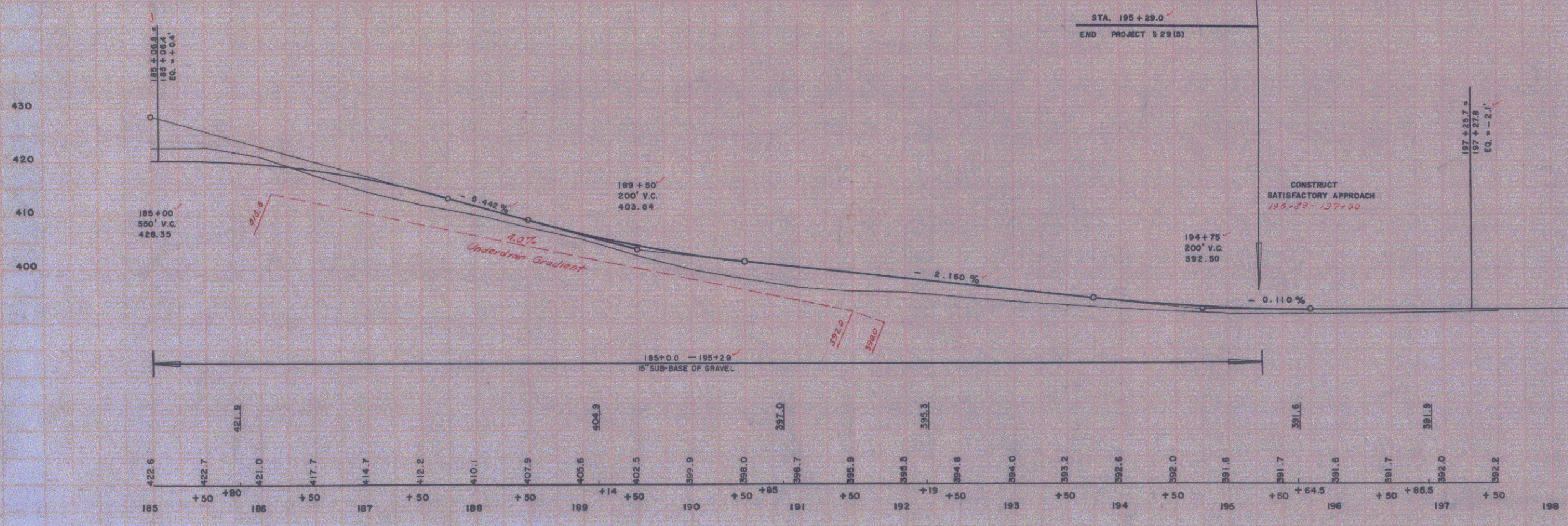
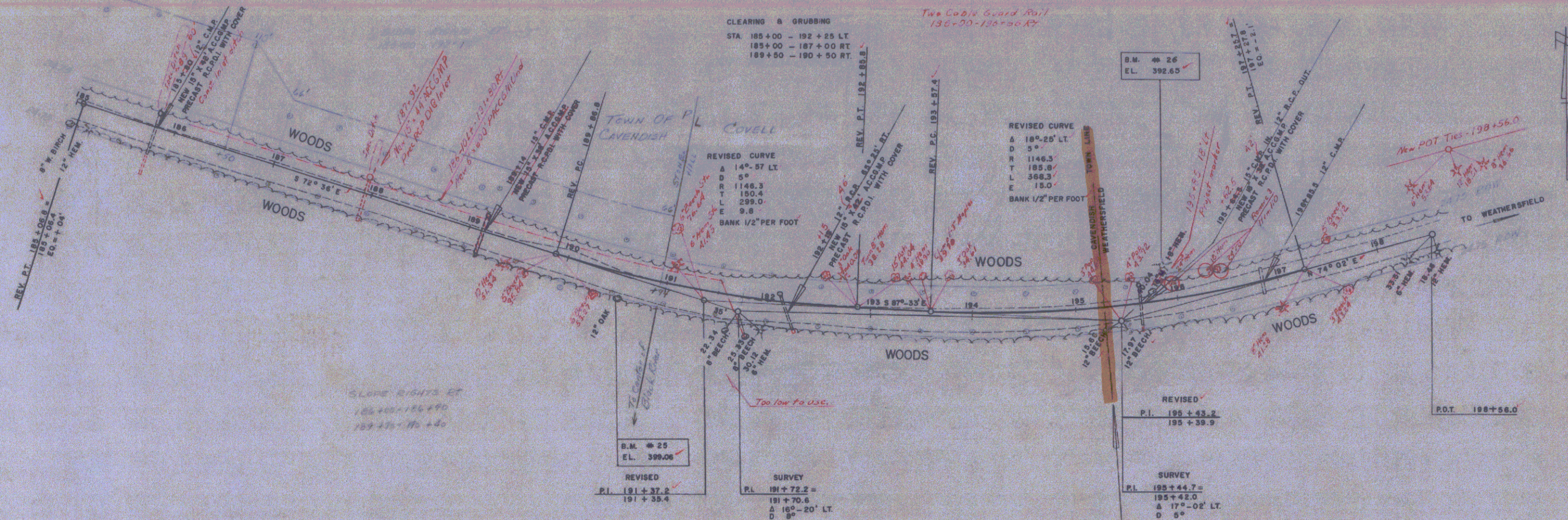
B.M. 23A 10' by Duller 40' Right Sta 176+15 Elevation 389.16  
B.M. 23 S.I.T. 18" MAPLE 25.5' RIGHT STA. 176+48 ELEVATION 396.66

B.M. 24 S.I.T. 18" MAPLE 24.0' RIGHT STA. 183+27 ELEVATION 414.24

CAVENDISH S 29 (5)  
SHEET 10 OF 43 SHEETS

LAVIN WEBSTER-MARTIN INC. 1954  
WEBSTER-MARTIN INC. 1954  
TRACED

LAVIN WEBSTER-MARTIN INC. 1954  
WEBSTER-MARTIN INC. 1954



B.M. # 25 S.I.T. 12" OAK 210' RIGHT STA. 190+57 ELEVATION 399.06

B.M. # 26 S.I.R. 10" HEMLOCK 35.0' LEFT STA. 195+89 ELEVATION 392.65

CAVENOSH S 29 (5)  
SHEET 11 OF 43 SHEETS