

INDEX OF SHEETS

| | |
|-------------|---|
| SHEET NO. 1 | TITLE PAGE |
| 2 | TYPICAL CROSS-SECTION OF IMPROVEMENT DOUBLE TACK COAT OF REPAVED TAP WITH SAND-GRAVEL, 100L, ITEM 511-A |
| 3 | BANKING AND WIDENING TABLES |
| 4 | QUANTITY SHEET ITEMS AND DRAINAGE |
| 5-6 | EARTHWORK SHEETS |
| 7 | CONSTRUCTION DETAILS (DRAINAGE AND MARKERS) |
| 8 | CONSTRUCTION DETAILS CD-1 (DITCHES) |
| 9-12 | PLAN AND PROFILE SHEETS |
| 13 | STANDARD STRUCTURE SHEET S-40 (BARRICADES, SIGNS & LIGHTS) |
| 14-20 | CROSS-SECTIONS |

STANDARD STRUCTURE SHEET APPROVED BY THE CHIEF ENGINEER, VERMONT STATE DEPARTMENT OF HIGHWAYS
S-40 JUNE 10, 1950

| DIV. NO. | STATE | FED. AID PROJ. NO. | FISCAL YEAR | SHEET NO. | TOTAL SHEETS |
|----------|-------|--------------------|-------------|-----------|--------------|
| 1 | Vt. | S 89(13) | 1950 | 1 | 20 |

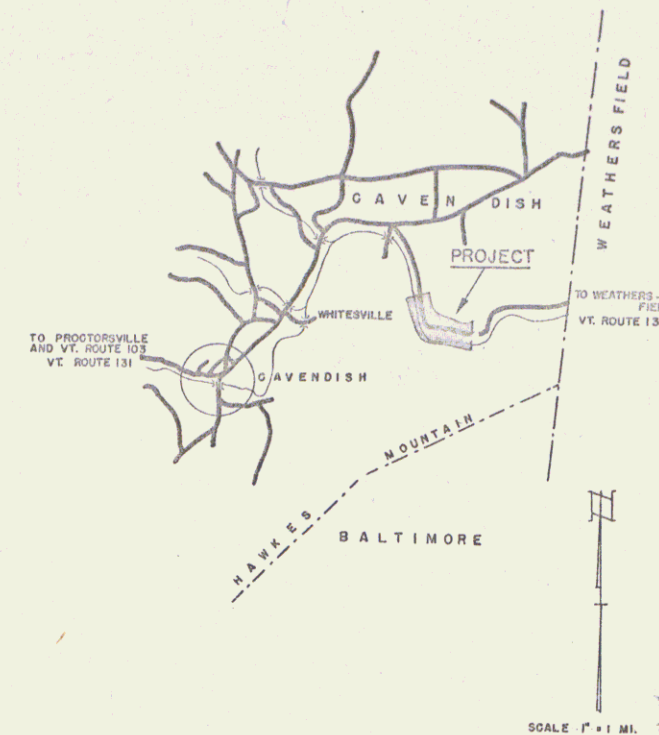
STATE OF VERMONT
STATE HIGHWAY DEPARTMENT

PLAN AND PROFILE OF PROPOSED
STATE HIGHWAY

SECONDARY PROJECT

TOWN OF CAVENDISH
COUNTY OF WINDSOR
VERMONT ROUTE 131
WEATHERSFIELD-CAVENDISH ROAD

Pin# 99R642



BEGINNING AT A POINT APPROXIMATELY 2.23 MILES WEST OF THE WEATHERSFIELD-CAVENDISH TOWN LINE AND EXTENDING EASTERLY 4,450.5 FT.
LENGTH OF PROJECT 4,450.5 FEET = 0.843 MILE



RIGHT-OF-WAY DIVISION
TOWN FILE
PERPETUAL
Town of UT 131
(To Be Returned To R.O.W. Division)

APPROVED: *Nov 21 1950*
H. E. Saugens
CHIEF ENGINEER
SUBMITTED BY ORDER OF THE STATE HIGHWAY BOARD

NOTE: ANY FURTHER INFORMATION CONCERNING FINAL QUANTITIES, AMOUNTS OR OTHER DETAILS RELATIVE TO THIS PROJECT MAY BE FOUND IN EITHER THE FIELD BOOKS OR THE ESTIMATE FILE.

DEPARTMENT OF COMMERCE
BUREAU OF PUBLIC ROADS

RECOMMENDED FOR APPROVAL

DISTRICT ENGINEER DATE

APPROVED:

DIVISION ENGINEER DATE

APPROVED: *Nov 29 1950* CONSTRUCTION ENGINEER
APPROVED: *Nov 21 1950* SECONDARY ENGINEER
APPROVED: *Nov 21 1950* ROAD ENGINEER
APPROVED: *Nov 23 1950* DISTRICT ENGINEER
PROJECT 5 No. 29(13)
SHEET 1 OF 20

STEARNS R. JENKINS

UT 131

| | |
|---|---|
| PROJECT NAME & NUMBER CAVENDISH S 29(13) | PAVEMENT AREA 10000 S.Y. |
| RECORD PLANS | TYPE DOUBLE TACK WITH SAND-GRAVEL |
| MATERIALS | STONE STATE PIT, PERKINSVILLE R.C.P. GLENS FALLS BLDG. & SUPPLY CO., GLENS FALLS, N.Y. |
| CONTRACTOR - M. J. BARRINGTON, JR. | CONTRACT DATED 8/24/50 CONTRACT STARTED 8/24/50 CONTRACT COMPLETED 7/8/53 |
| INSPECTOR - R. J. WOODGARD | |
| RECORD PLANS - S.V. CLIFFORD | |

| | |
|------------------------------------|-----------|
| CONTRACTOR - M. J. BARRINGTON, JR. | YEAR 1953 |
| INSPECTOR - R. J. WOODGARD | |
| RECORD PLANS - S.V. CLIFFORD | |
| CONSTRUCTION COMPLETED - 7/8/53 | |

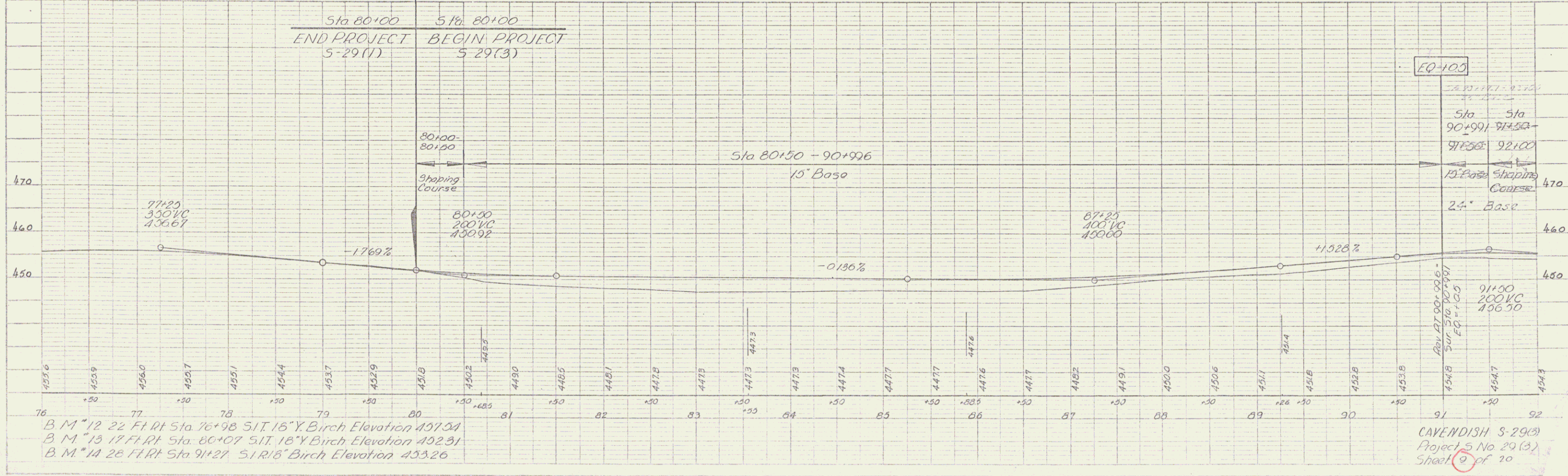
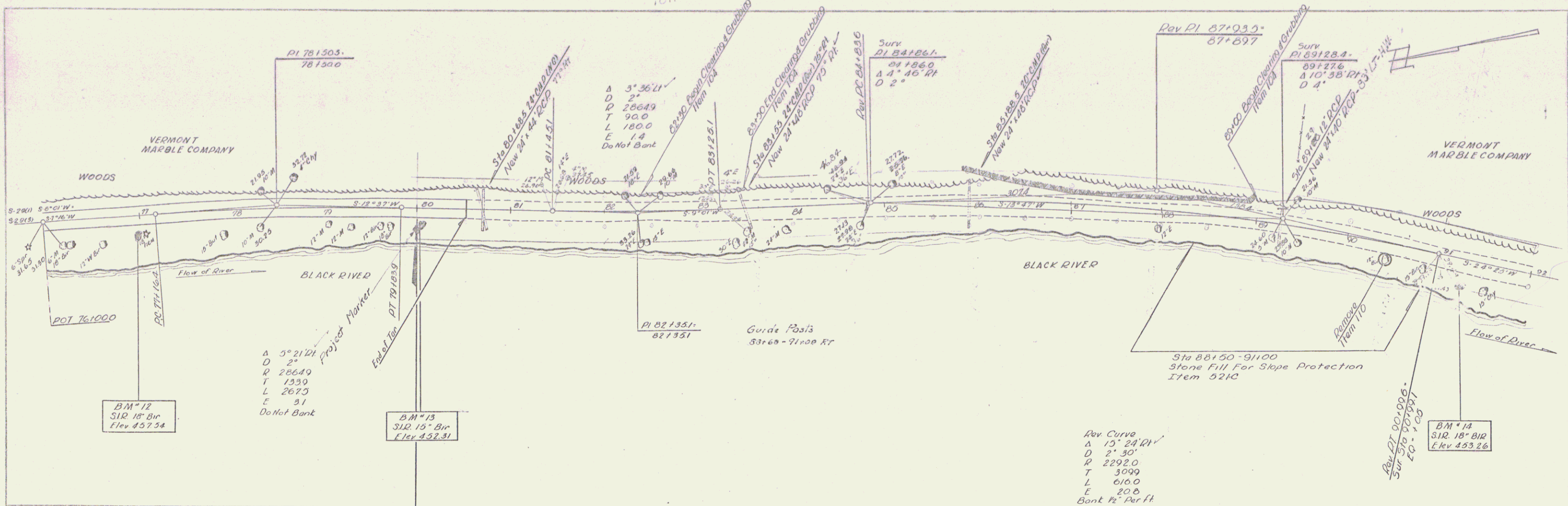
| | | |
|------------------|-------|------|
| GROUND ELEVATION | DATUM | LINE |
| GRADE ELEVATION | DATUM | LINE |

| CURVE DATA | |
|-----------------------|----------|
| DEFLECTION ANGLE | Δ |
| DEGREE OF CURVE | D |
| RADIUS OF CURVE | R |
| TANGENT DISTANCE | T |
| LENGTH OF CURVE | L |
| EXTERNAL DISTANCE | E |
| POINT OF INTERSECTION | P. I. |
| POINT OF CURVE | P. C. |
| POINT OF TANGENT | P. T. |
| POINT ON TANGENT | P. O. T. |

| SCALES | |
|--------------------|-----------|
| TITLE | 1" = 300' |
| TYPICAL | 1" = 2' |
| PLAN | 1" = 50' |
| PROFILE HORIZONTAL | 1" = 50' |
| PROFILE VERTICAL | 1" = 10' |
| CROSS SECTIONS | 1" = 5' |

| | | |
|---------|------|-------|
| PLAN | DATE | SCALE |
| REVISED | | |
| BY | | |
| CHECKED | | |
| DATE | | |

| | | |
|-----|------|-------------|
| NO. | DATE | DESCRIPTION |
| 1 | | |
| 2 | | |
| 3 | | |
| 4 | | |
| 5 | | |

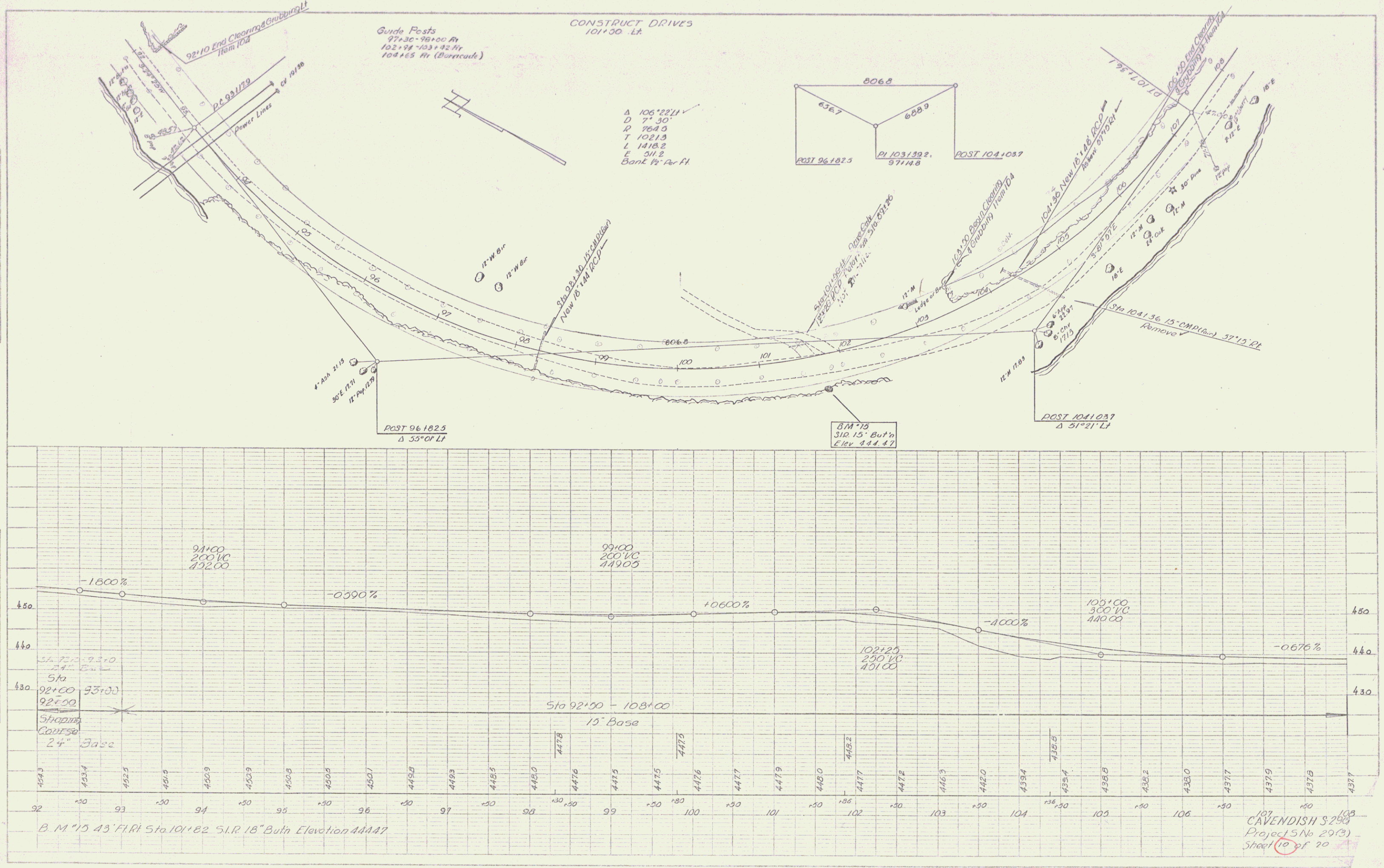


B.M. 12 22 FT RT Sta 76+98 5 1/2" Y. Birch Elevation 457.54
 B.M. 13 17 FT RT Sta 80+07 5 1/2" Y. Birch Elevation 452.31
 B.M. 14 28 FT RT Sta 91+21 5 1/2" Y. Birch Elevation 453.26

CAVENDISH S-29(B)
 Project No 29(B)
 Sheet 9 of 10

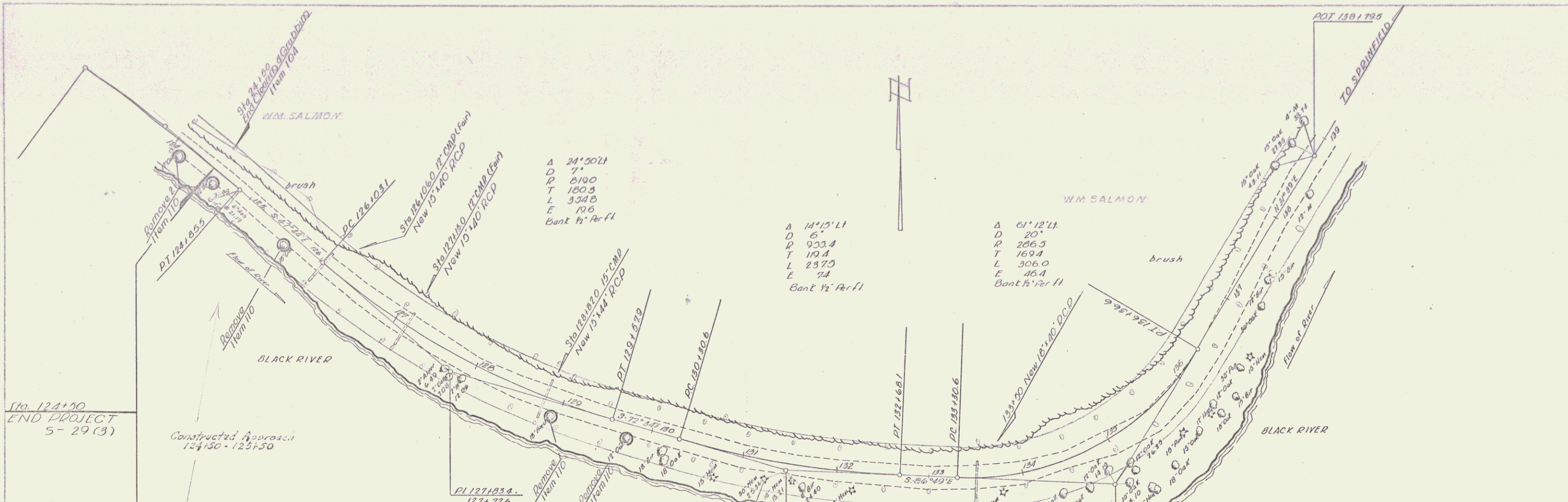
PLAN
 DATE: 1/16/82
 DRAWN BY: [illegible]
 CHECKED BY: [illegible]
 PROJECT: [illegible]

PROFILE
 DATE: 1/16/82
 DRAWN BY: [illegible]
 CHECKED BY: [illegible]
 PROJECT: [illegible]



107
 CAVENDISH S-290
 Project 5 No 29(3)
 Sheet 10 of 20

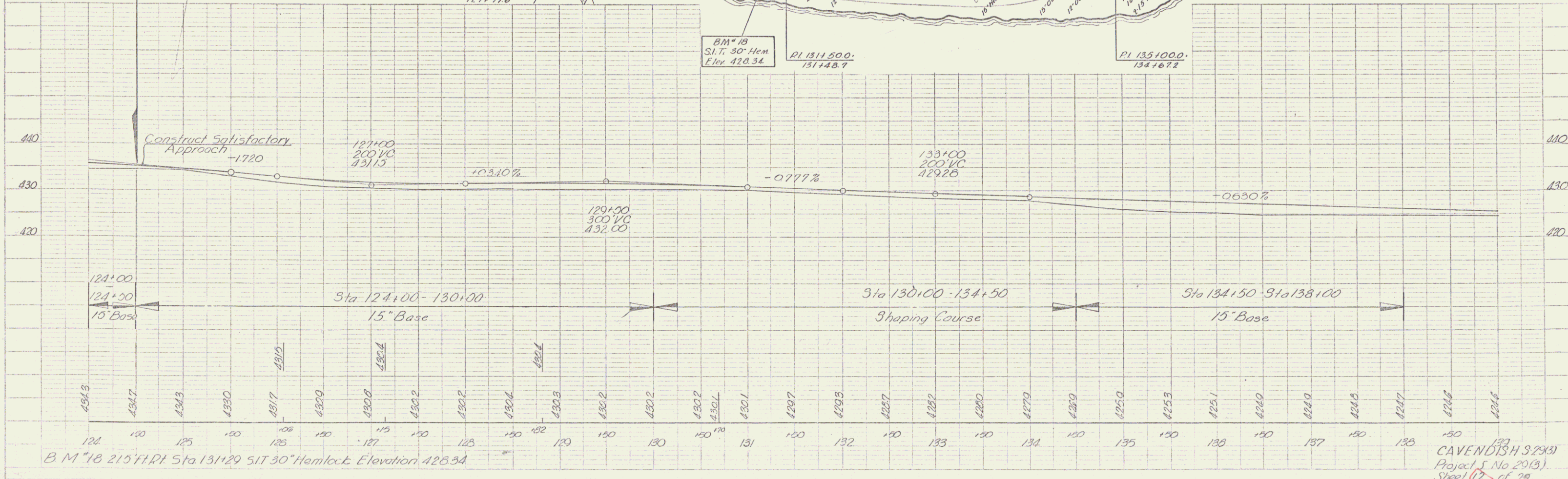
PLAN
 DATE BOOK
 SHEETS
 Traced



A 24°50'11"
 D 7'
 P 6100
 T 180.8
 L 334.8
 E 10.6
 Bank 1/2" Per ft

A 14°15'11"
 D 5'
 P 953.4
 T 10.4
 L 237.0
 E 7.4
 Bank 1/2" Per ft

A 61°12'14"
 D 20'
 P 286.3
 T 169.4
 L 306.0
 E 46.4
 Bank 1/2" Per ft



CAVENDISH S 29341
 Project S No 20(3)
 Sheet 17 of 20