

INDEX OF SHEETS

SHEET NO. 1	TITLE PAGE
" 2	TYPICAL CROSS-SECTION OF IMPROVEMENT (DOUBLE TACK COAT OF REFINED TAR WITH SAND & GRAVEL SEAL, ITEM 299)
" 3	BANKING AND WIDENING TABLES
4-9	PLAN AND PROFILE
10	STANDARD STRUCTURE SHEET S-28 PIPE CULVERTS
11	" " " S-30 GUARD RAIL
12	" " " S-30A BOUNDARY MARKERS
13	" " " S-40 BARRICADES, SIGNS & LIGHTS
14	" " " S-41 ROUNDING OF SLOPES
15-34	GROSS SECTIONS

STANDARD STRUCTURE SHEETS APPROVED BY THE CHIEF ENGINEER, VT. STATE DEPT. OF HIGHWAYS

- S-28 APRIL 26, 1941
- S-30 MAY 12, 1941
- S-30A APRIL 19, 1941
- S-40 DECEMBER 18, 1945

STATE OF VERMONT  
STATE HIGHWAY DEPARTMENT

PLAN AND PROFILE OF PROPOSED  
STATE HIGHWAY

SECONDARY PROJECT

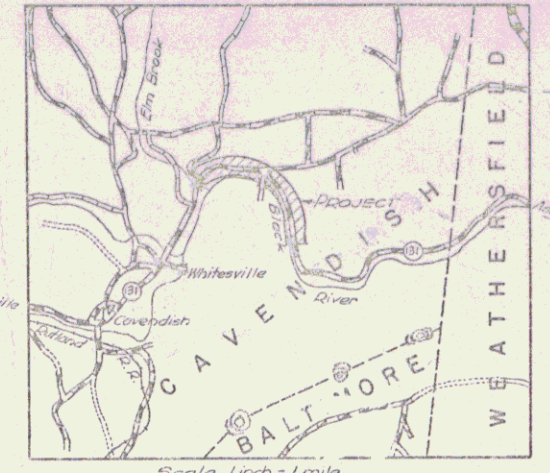
TOWN OF CAVENDISH Pin# 99R640

CAVENDISH-ASCUTNEY ROAD

BEGINNING AT THE NORTH END OF CIDER MILL BRIDGE ON ROUTE 131, 1.750 MILES NORTH OF CAVENDISH VILLAGE AND EXTENDING SOUTHEASTERLY 1.505 MILES EXCLUDING BRIDGE.

LENGTH OF PROJECT 7946.6 FEET = 1.505 MILES

FED. ROAD DIST. NO.	STATE	FISCAL YEAR	TOTAL SHEETS	TOTAL LENGTH
9	VT.	2901/2946	1	34



RECORD PLANS

*2/22/2000 checked J. Lamm*

RIGHT-OF-WAY DIVISION  
TOWN FILE

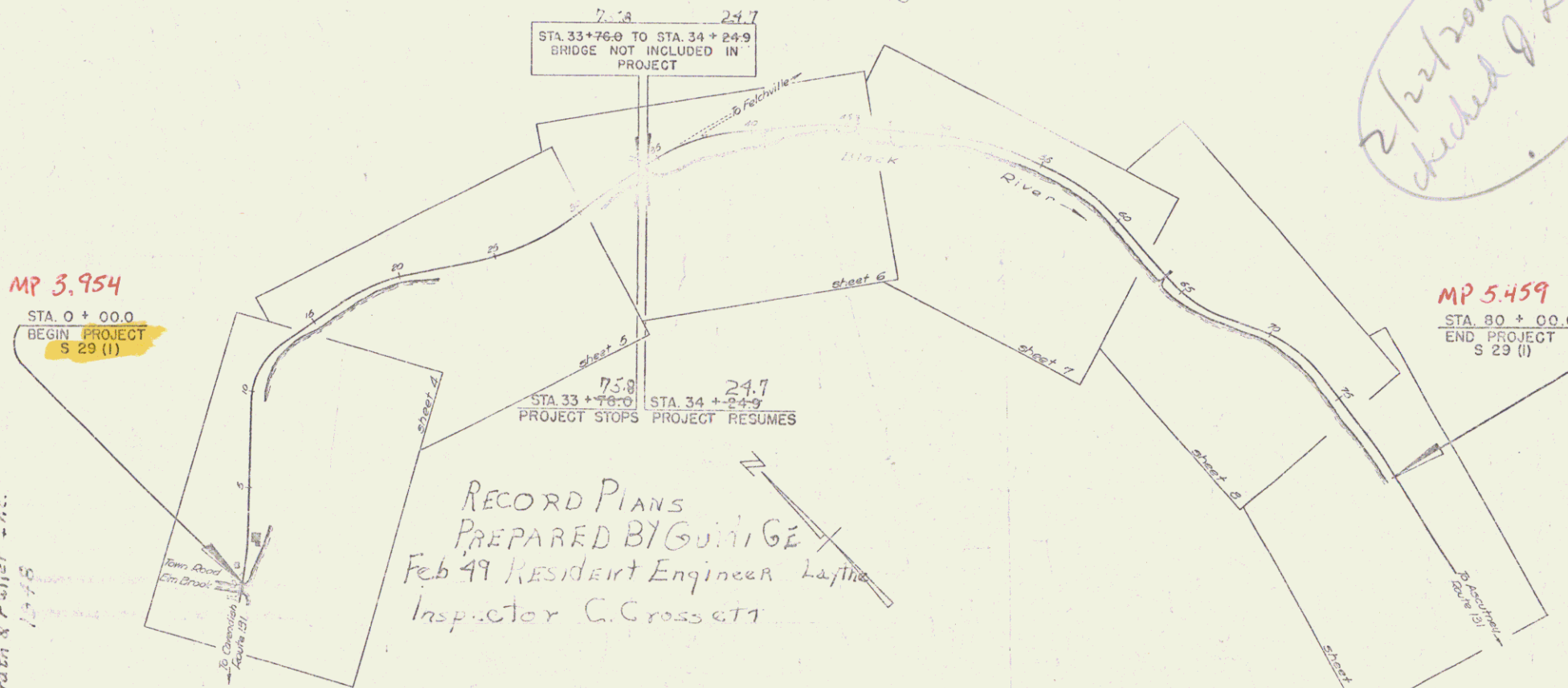
PERPETUAL

Sta. UT 131

(To Be Returned To R.O.W. Division)

MP 3.954  
STA. 0 + 00.0  
BEGIN PROJECT  
S 29 (1)

MP 5.459  
STA. 80 + 00.0  
END PROJECT  
S 29 (1)



STA 33+76.9 TO STA 34+24.9  
BRIDGE NOT INCLUDED IN PROJECT

STA 33+76.9 PROJECT STOPS  
STA 34+24.9 PROJECT RESUMES

RECORD PLANS  
PREPARED BY GUNNIGE  
Feb 49 Resident Engineer  
Inspector C. Cross et al

RECORD PLANS  
Cavendish S 29 (1)  
Contractor - Drutz & Fowler Inc.

CURVE DATA

DEFLECTION ANGLE	Δ
DEGREE OF CURVE	D
RADIUS OF CURVE	R
TANGENT DISTANCE	T
LENGTH OF CURVE	L
EXTERNAL DISTANCE	E
POINT OF INTERSECTION	P. I.
POINT OF CURVE	P. C.
POINT OF TANGENCY	P. T.
POINT ON TANGENT	P. O. T.

SCALES

TITLE	1" = 400'
TYPICAL	1" = 2'
PLAN	1" = 50'
PROFILE HORIZONTAL	1" = 50'
PROFILE VERTICAL	1" = 10'
CROSS SECTIONS	1" = 5'

GROUND ELEVATION DATUM LINE  
GRADE ELEVATION DATUM LINE

THESE PLANS ARE SUBJECT TO SUCH REVISIONS AS MAY BE REQUIRED BY THE PUBLIC ROADS ADMINISTRATION OR THE COMMISSIONER OF HIGHWAYS.  
CONSTRUCTION IS TO BE CARRIED ON IN ACCORDANCE WITH THE PLANS AND THE STANDARD ROAD AND BRIDGE SPECIFICATIONS OF 1937, AS APPROVED DECEMBER 28TH, 1935 BY THE PUBLIC ROADS ADMINISTRATION, INCLUDING ALL SUBSEQUENT APPROVED REVISIONS AND SUCH REVISED SPECIFICATIONS AND SPECIAL PROVISIONS AS ARE SUBMITTED WITH THE PLANS.

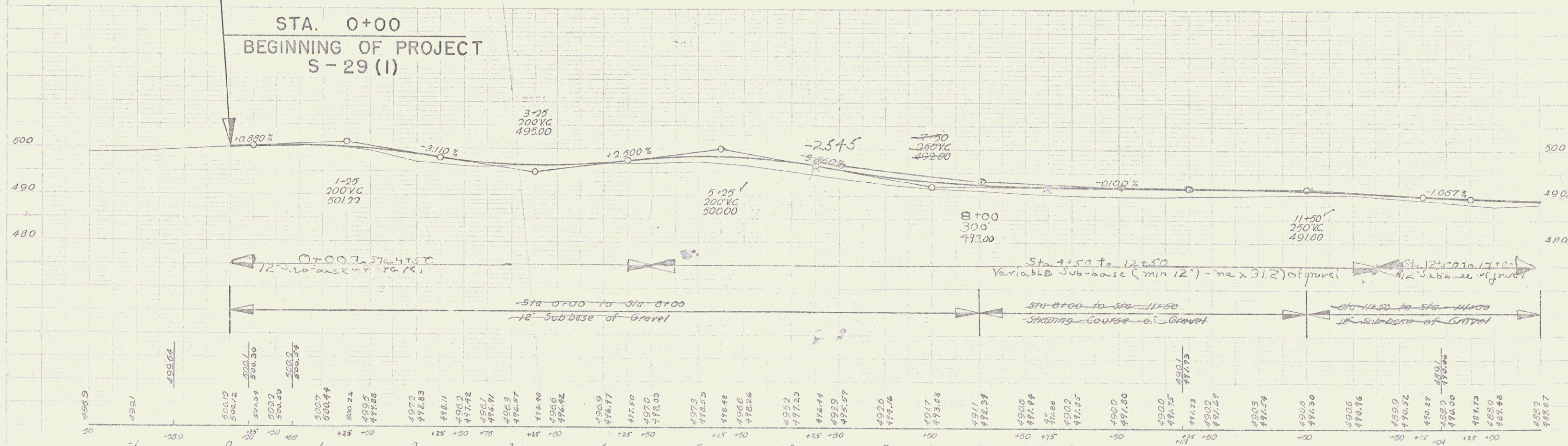
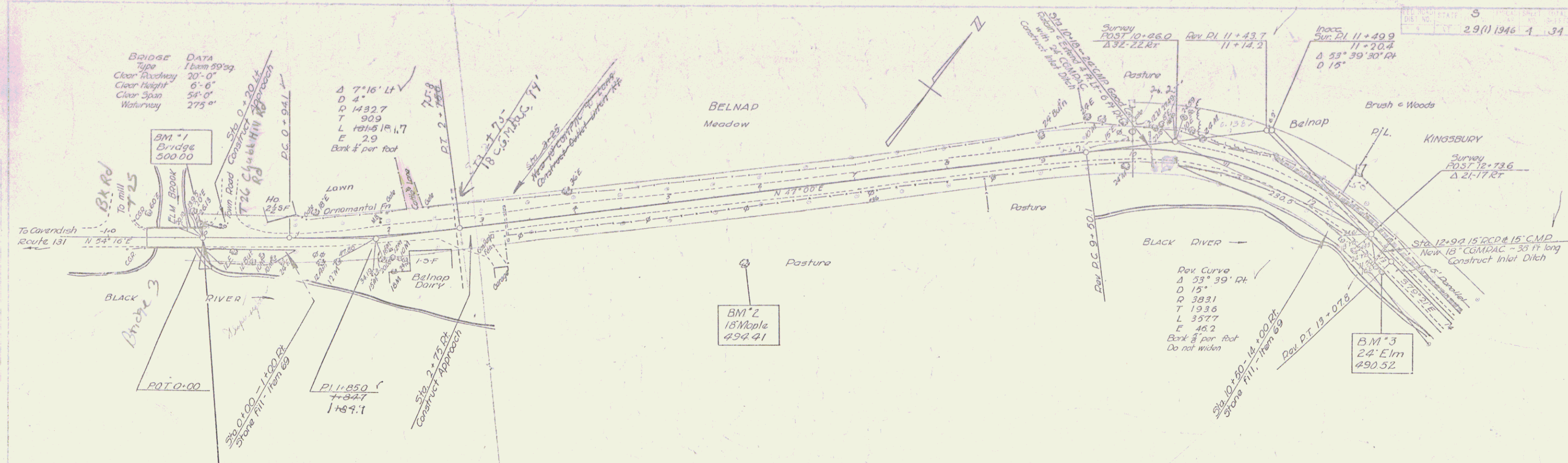
APPROVED: April 14, 1947  
*Thos. August*  
COMMISSIONER OF HIGHWAYS

RECOMMENDED FOR APPROVAL  
PUBLIC ROADS ADMINISTRATION  
FEDERAL WORKS AGENCY

APPROVED April 14, 1947 HIGHWAY ENGINEER  
APPROVED April 24, 1947 DISTRICT HIGHWAY COMMISSIONER  
SERIES 5, No. 29(1) FILED  
SHEET 1 OF 34

STEARNS R. JENKINS

UT 131

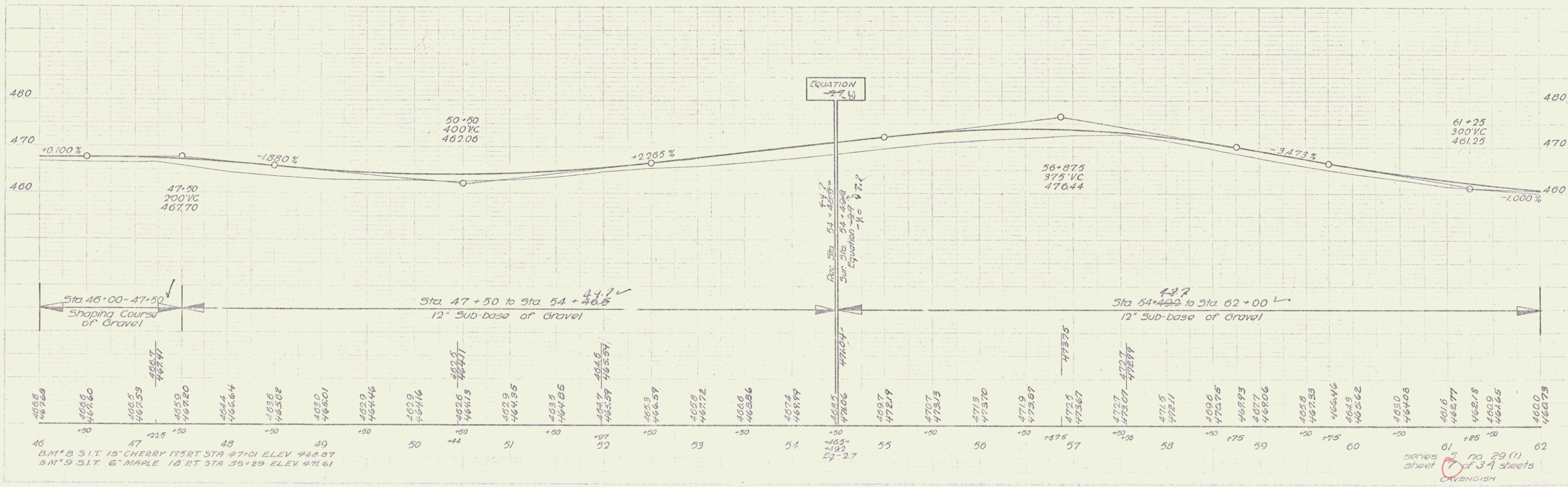
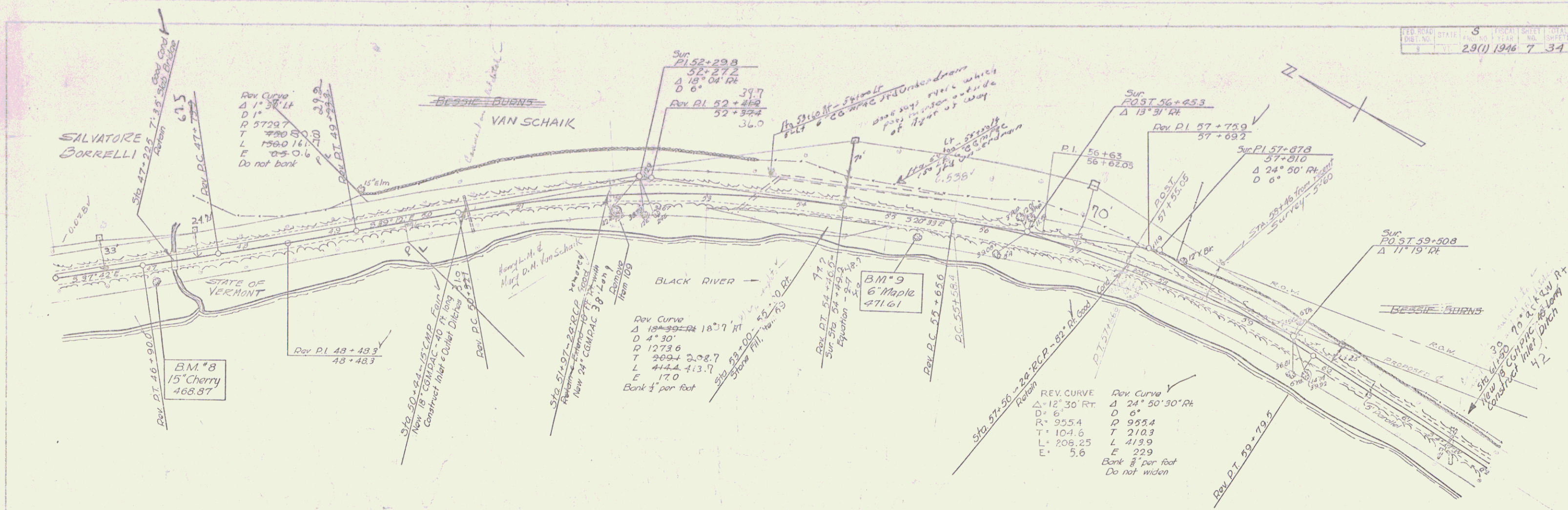


BM #1 SPOT ON BRIDGE HAUNCH 15' LT. STA. 0+02 ELEV. 500.00  
 BM #2 517' 18" MAPLE W RT STA. 5+70 ELEV. 492.61  
 BM #3 512' 24" ELM 14' RT STA. 13+07 ELEV. 490.52

Series 5 no 29(1)  
 Sheet 7 of 34 sheets  
 CAVENDISH





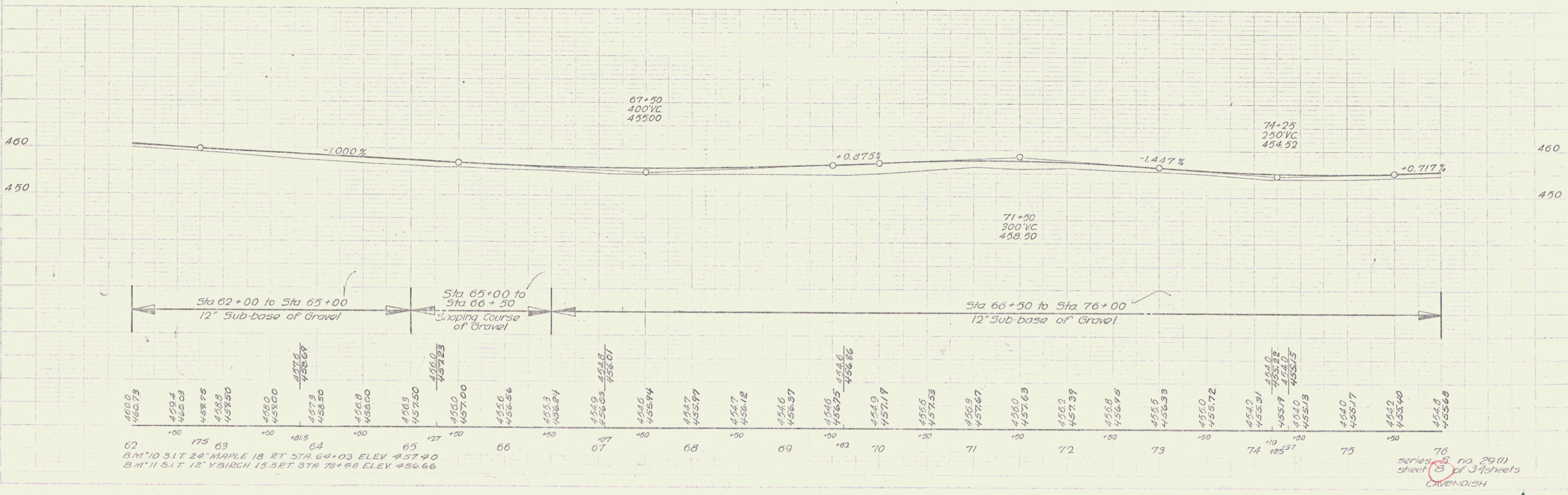
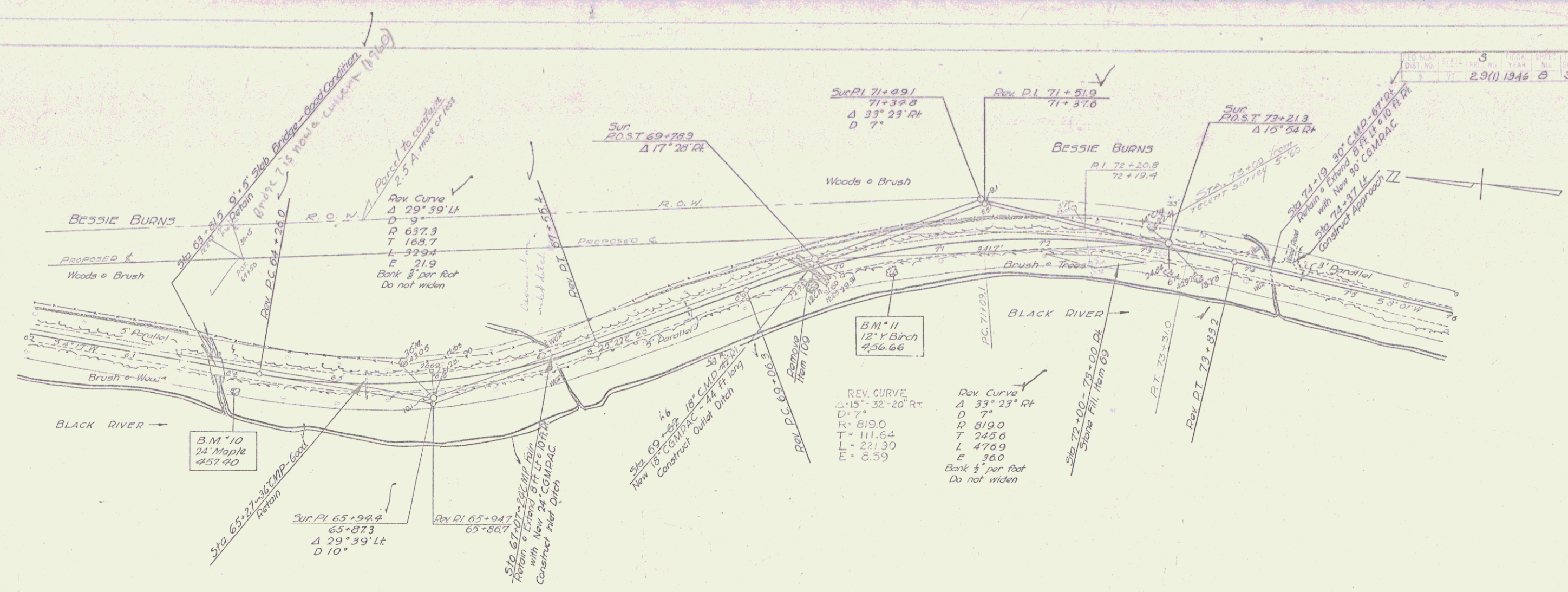


BM #8 SIT 15' CHERRY 175 RT STA 47+01 ELEV 468.87  
 BM #9 SIT 6' MAPLE 18 RT STA 55+29 ELEV 471.61

series 2 no. 29 (1)  
 sheet of 3 sheets  
 CAVENDISH

PLAN  
7-46  
Laying Out

Profile  
7-46  
Laying Out



62  
BM '10 S.I.T. 24' MAPLE 18 RT STA 62+03 ELEV 457.40  
BM '11 S.I.T. 12' YBIRCH 15.5 RT STA 70+68 ELEV 456.66

76  
series 6, no. 29(1)  
sheet 3 of 3 sheets  
CAYENDISH

