

INDEX OF SHEETS

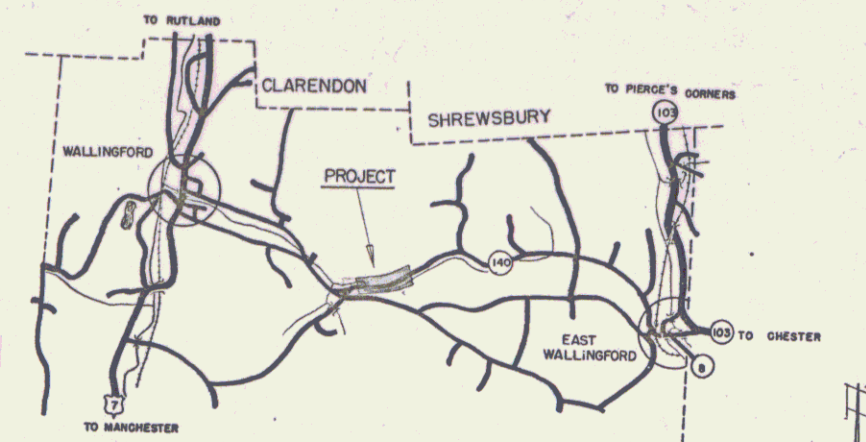
SHEET NO. 1	TITLE PAGE
2	TYPICAL CROSS-SECTION OF IMPROVEMENT DOUBLE TACK COAT OF REFINED TAR WITH PEA STONE SEAL ITEM 312-A
3	BANKING AND WIDENING TABLES
4	QUANTITY SHEET (ITEMS & DRAINAGE)
5-6	EARTHWORK SHEETS
7	ROADWAY STANDARD SHEET RS 56-3 (MARKERS)
8	" " " RS 56-4 (DRAINAGE)
9	" " " RS 56-10 (TWO CABLE GUARD RAIL)
10	" " " RS 56-12 (BARRICADES, SIGNS & LIGHTS)
11-14	PLAN & PROFILE SHEETS
15-24	CROSS SECTIONS

STATE	PROJ. NO.	FISCAL YEAR	SHEET NO.	TOTAL SHEETS
VT.	578 (1)	1957	1	24

STATE OF VERMONT  
STATE HIGHWAY DEPARTMENT

PLAN AND PROFILE OF PROPOSED  
STATE HIGHWAY

TOWN OF WALLINGFORD  
COUNTY OF RUTLAND  
VERMONT ROUTE # 140  
WALLINGFORD-EAST WALLINGFORD ROAD



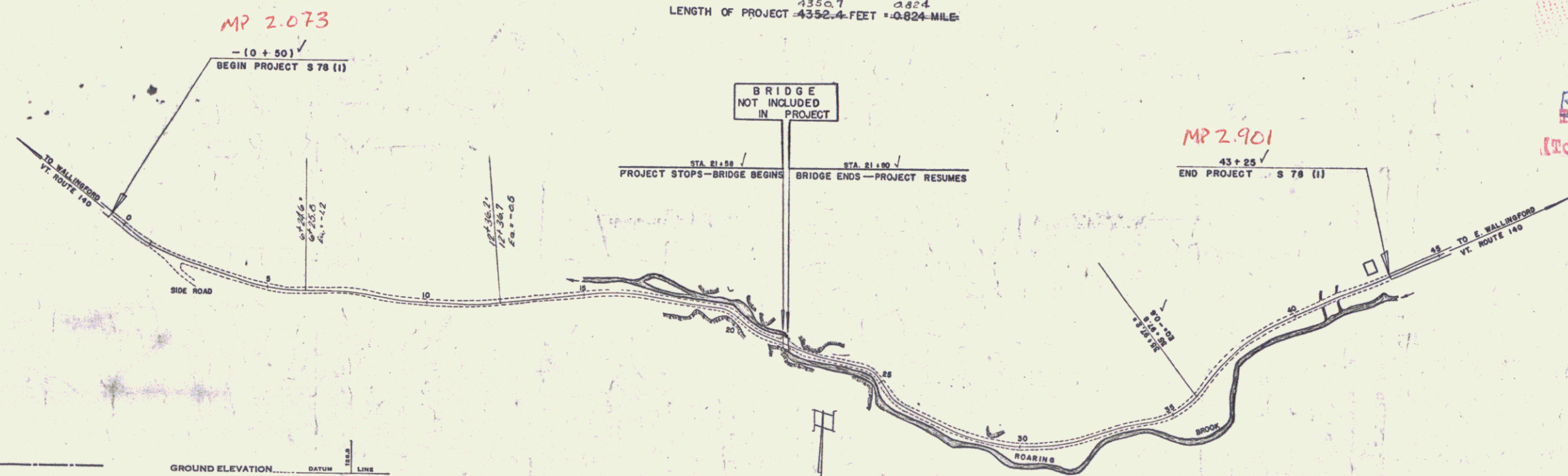
WALLINGFORD 578(1)-DOUBLE TACK-10203 BY  
RECORD PLANS  
MATERIALS

Subbase of Gravel	Torbell Pit, Wallingford, Vt.
Refined Tar	Barret Tar Co.
R.C.P.	W. Conv. Pl. Co., Windsor, Vt.
ACCGMIP	New England Metal C. & M. Co., Palmer, Mass.
Two Cable Guard Rail	Cable-Bel. Inc. & Steel, Posts-Koppers Inc.
Wood Guide Posts	Koppers Inc.

Contractor	M. C. Buck	Contract Dated	July 3, 57
Resident Engineer	M. W. Lawson	Started	July 10, 57
Record Plans	M. W. Lawson	Suspended	Nov. 8, 57
		Resumed	Apr. 16, 58
		Completed	Aug. 13, 58
		Accepted	Aug. 16, 58

BEGINNING AT A POINT APPROXIMATELY 11,457 FEET EASTERLY OF THE INTERSECTION OF U.S. ROUTE 7 AND VERMONT ROUTE 140 AND EXTENDING EASTERLY 4352.4 FEET, EXCLUDING BRIDGE AT STA. 21+58 TO STA. 21+80

LENGTH OF PROJECT 4352.4 FEET = 0.824 MILE



RIGHT-OF-WAY DIVISION  
TOWN FILE  
PERPETUAL  
Town of Wallingford  
(To Be Returned To R.O.W. Division)

COUNTY LINE	---
TOWN LINE	---
FENCE LINE	---
STONE WALL	---
UNFENCED PROPERTY	---
GUARD RAIL	---
TRAVELED WAY	---
RAILROAD	---
RETAINING WALL	---
CENTER LINE	---
SURVEY LINE	---
CULVERT	---
DROP INLET	---
TROLLEY POLE	---
POWER POLE	---
TELEPHONE POLE	---
THREE	---
HEDGE	---

GROUND ELEVATION	DATUM	LINE
GRADE ELEVATION	DATUM	LINE

CURVE DATA

DEFLECTION ANGLE	Δ
DEGREE OF CURVE	D
RADIUS OF CURVE	R
TANGENT DISTANCE	T
LENGTH OF CURVE	L
EXTERNAL DISTANCE	E
POINT OF INTERSECTION	P. I.
POINT OF CURVE	P. C.
POINT OF TANGENT	P. T.
POINT ON TANGENT	P. O. T.

SCALES

TITLE	1" = 200'
TYPICAL	1" = 2'
PLAN	1" = 50'
PROFILE HORIZONTAL	1" = 50'
PROFILE VERTICAL	1" = 10'
CROSS SECTIONS	1" = 5'

THESE PLANS ARE SUBJECT TO SUCH REVISIONS AS MAY BE REQUIRED BY THE BUREAU OF PUBLIC ROADS OR THE COMMISSIONER OF HIGHWAYS.

CONSTRUCTION IS TO BE CARRIED ON IN ACCORDANCE WITH THE PLANS AND THE STANDARD SPECIFICATIONS FOR HIGHWAY AND BRIDGE CONSTRUCTION OF JANUARY 1956 SUBMITTED TO THE BUREAU OF PUBLIC ROADS AS APPROVED JULY 5, 1956, INCLUDING ALL SUBSEQUENT APPROVED REVISIONS AND SUCH REVISED SPECIFICATIONS AND SPECIAL PROVISIONS AS ARE SUBMITTED WITH THE PLANS.

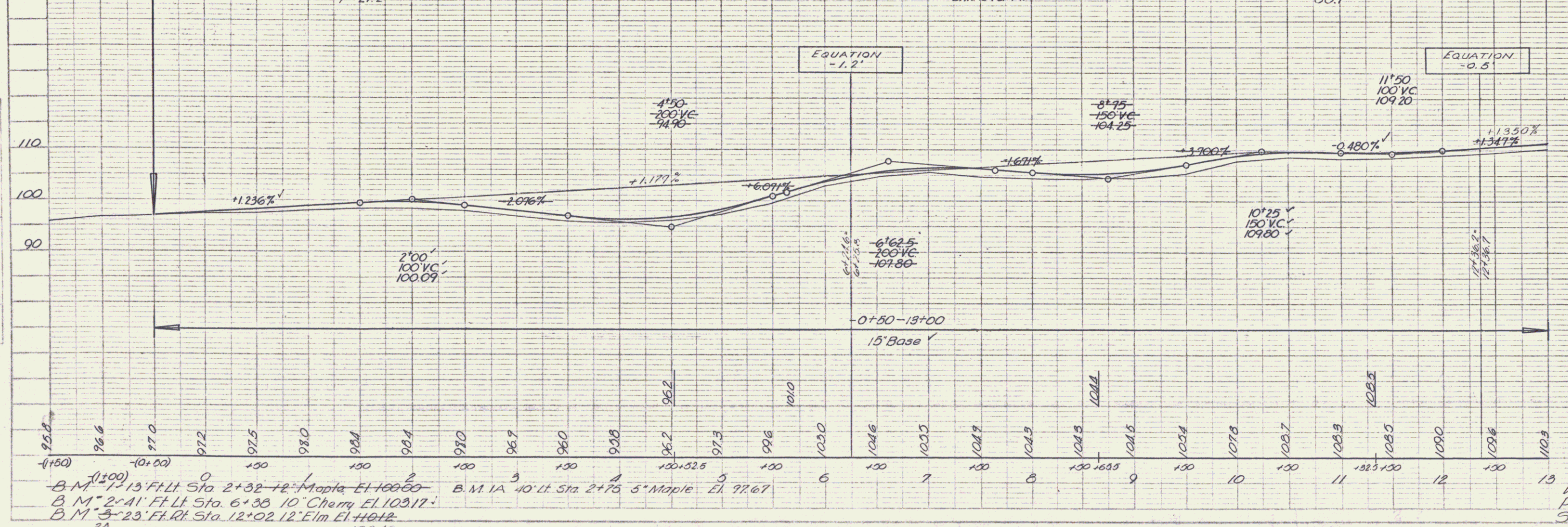
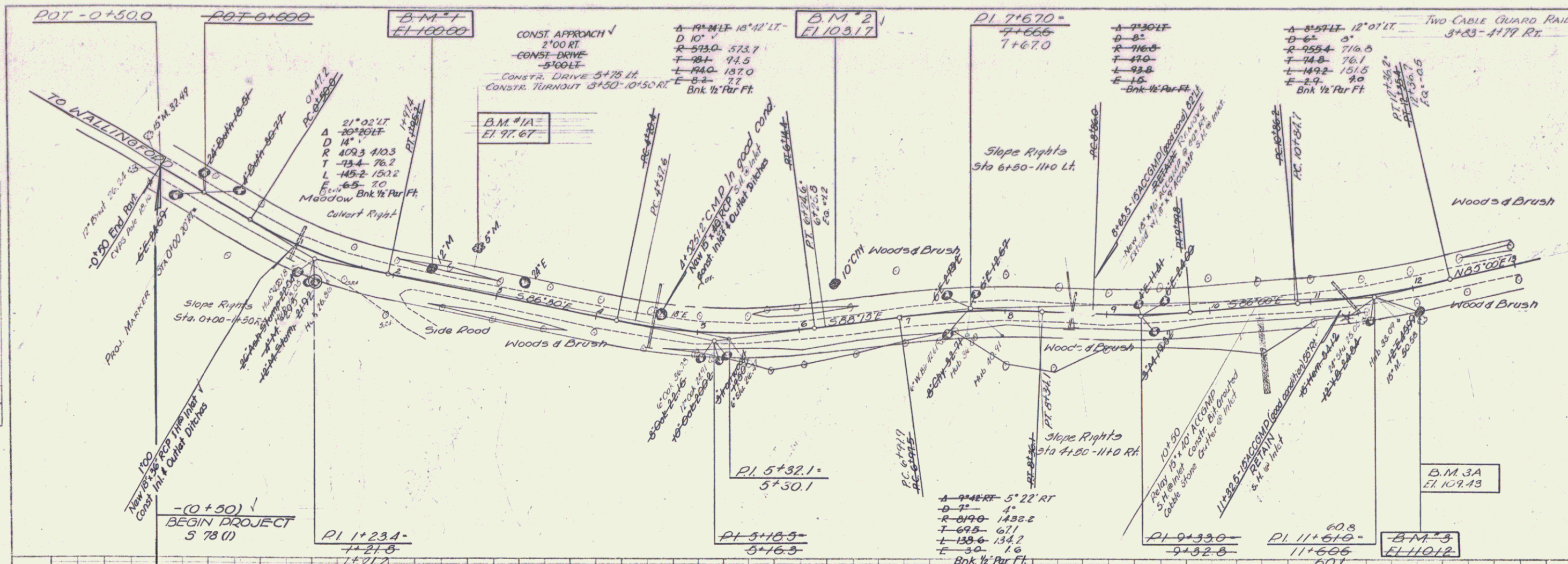
APPROVED: July 31, 1957  
H. E. August  
CHIEF ENGINEER  
SUBMITTED BY ORDER OF THE STATE HIGHWAY BOARD

Pin # 992637

APPROVED <u>[Signature]</u> CONSTRUCTION ENGINEER	APPROVED <u>[Signature]</u> SECONDARY ENGINEER	APPROVED <u>[Signature]</u> HIGHWAY ENGINEER	APPROVED <u>[Signature]</u> DISTRICT ENGINEER	PROJECT S NO. 78 (1) FILED SHEET 1 OF 24
--	---	---	--	---

PLAN  
 DRAWN BY: Folger  
 CHECKED BY: Murray  
 DATE: 3-33  
 PROJECT: 5-23  
 SHEET: 11 of 24

PROFILE  
 DRAWN BY: Folger  
 CHECKED BY: Palmer  
 DATE: 3-33  
 PROJECT: 5-23  
 SHEET: 11 of 24



B.M. #1 13' Ft. Lt. Sta. 2+32 12' Maple El. 100.00  
 B.M. #2 41' Ft. Lt. Sta. 6+38 10' Cherry El. 103.17  
 B.M. #3 23' Ft. Rt. Sta. 12+02 12' Elm El. 104.12  
 B.M. #3A 109.45

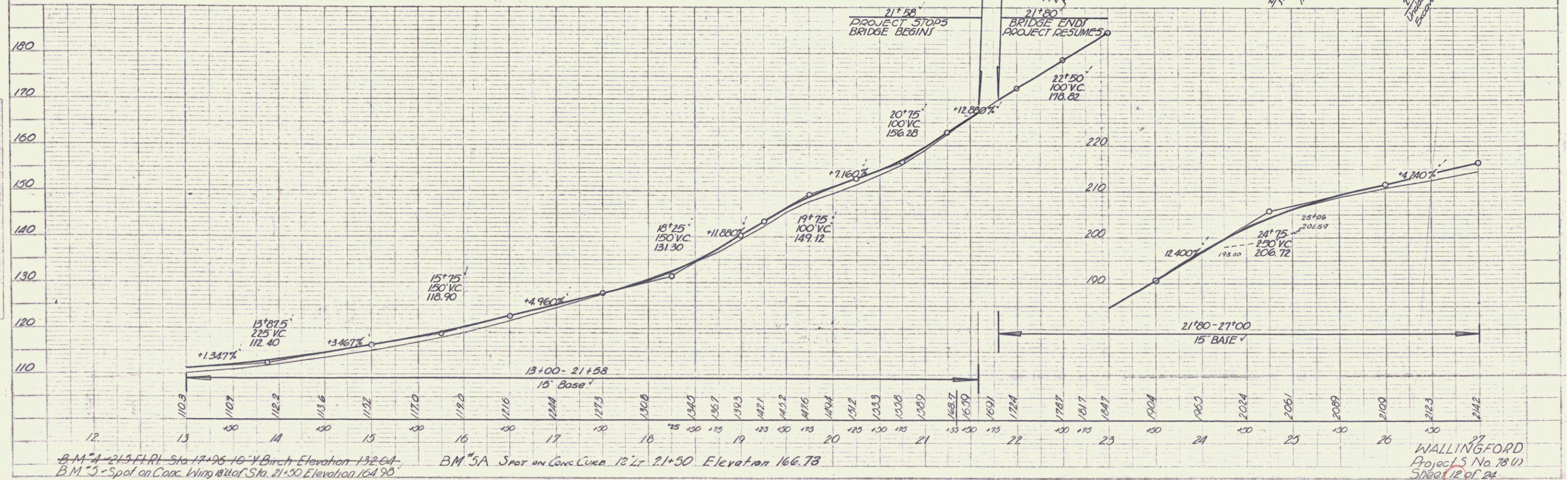
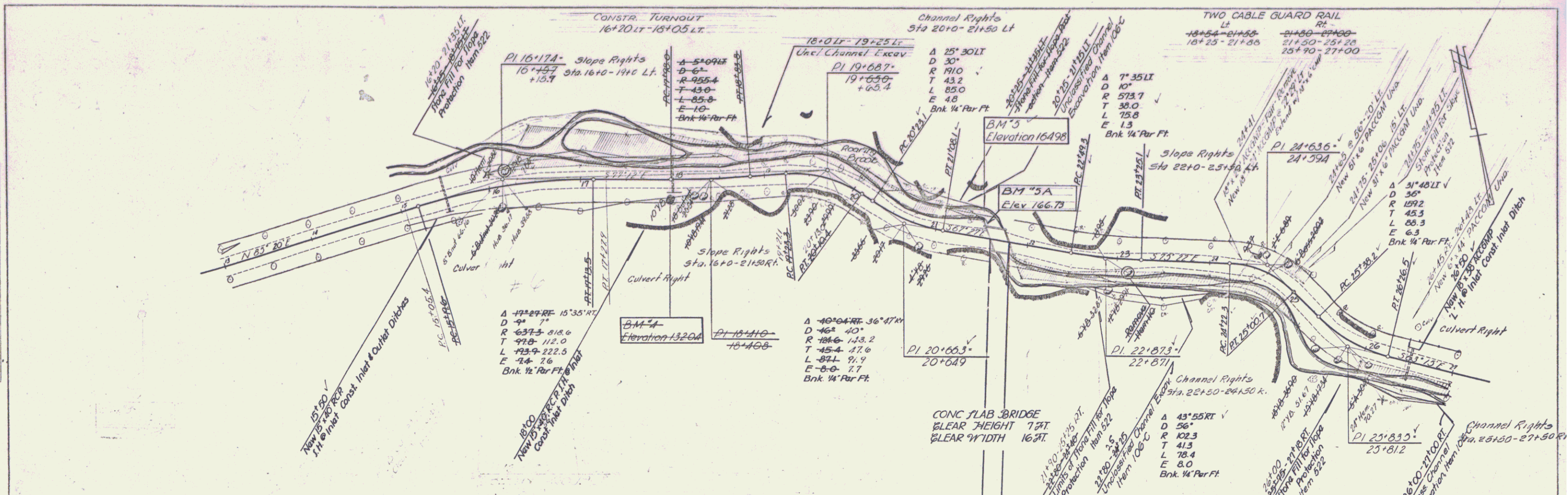
WALLINGFORD  
 Project 5 No. 78 (1)  
 Sheet 11 of 24

PLATE 1 - ROAD PROJECT 5-23 & 5-24  
 SCALE: 1" = 40' HORIZ.  
 1" = 10' VERT.

21

PLAN  
 DRAWN BY: A. Lamm  
 CHECKED BY: Palmer  
 DATE: 7-32  
 SHEET NO. 12 OF 24

PROFILE  
 DRAWN BY: B. Palmer  
 CHECKED BY: Palmer  
 DATE: 7-32  
 SHEET NO. 12 OF 24



B.M. #4 - 2 1/2" F.R.I. Sta. 17+96.16 - Y Birch Elevation 132.04  
 B.M. #5 - Spot on Conc. Wings 18' of Sta. 21+50 Elevation 166.95

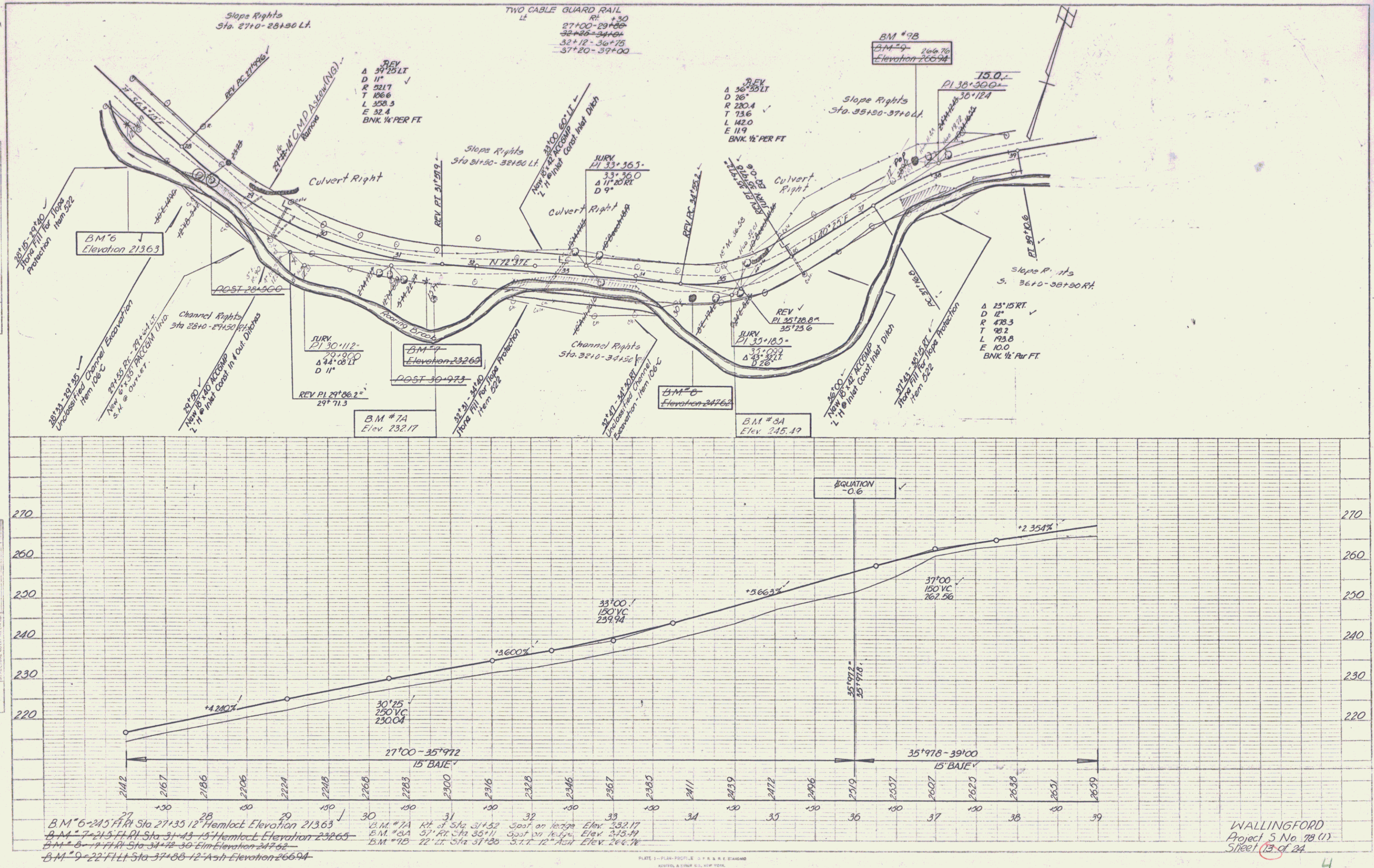
B.M. #5A Spot on Conc. Curb 12' Lt. 21+50 Elevation 166.73

WALLINGFORD  
 Project No. 78 (1)  
 Sheet 12 of 24

PLATE 1 - PLAN PROFILE - P. & R. R. STATION  
 SCALE: 1" = 40' HORIZ. 1" = 10' VERT.  
 P. & R. R. No. 348-10

PLAN  
 DRAWN BY: B. Foster  
 CHECKED BY: A. Linn  
 DATE: 1-31-32  
 PROJECT: WALLINGFORD  
 SHEET: 13 OF 24

PROFILE  
 DRAWN BY: B. Foster  
 CHECKED BY: A. Linn  
 DATE: 1-31-32  
 PROJECT: WALLINGFORD  
 SHEET: 13 OF 24



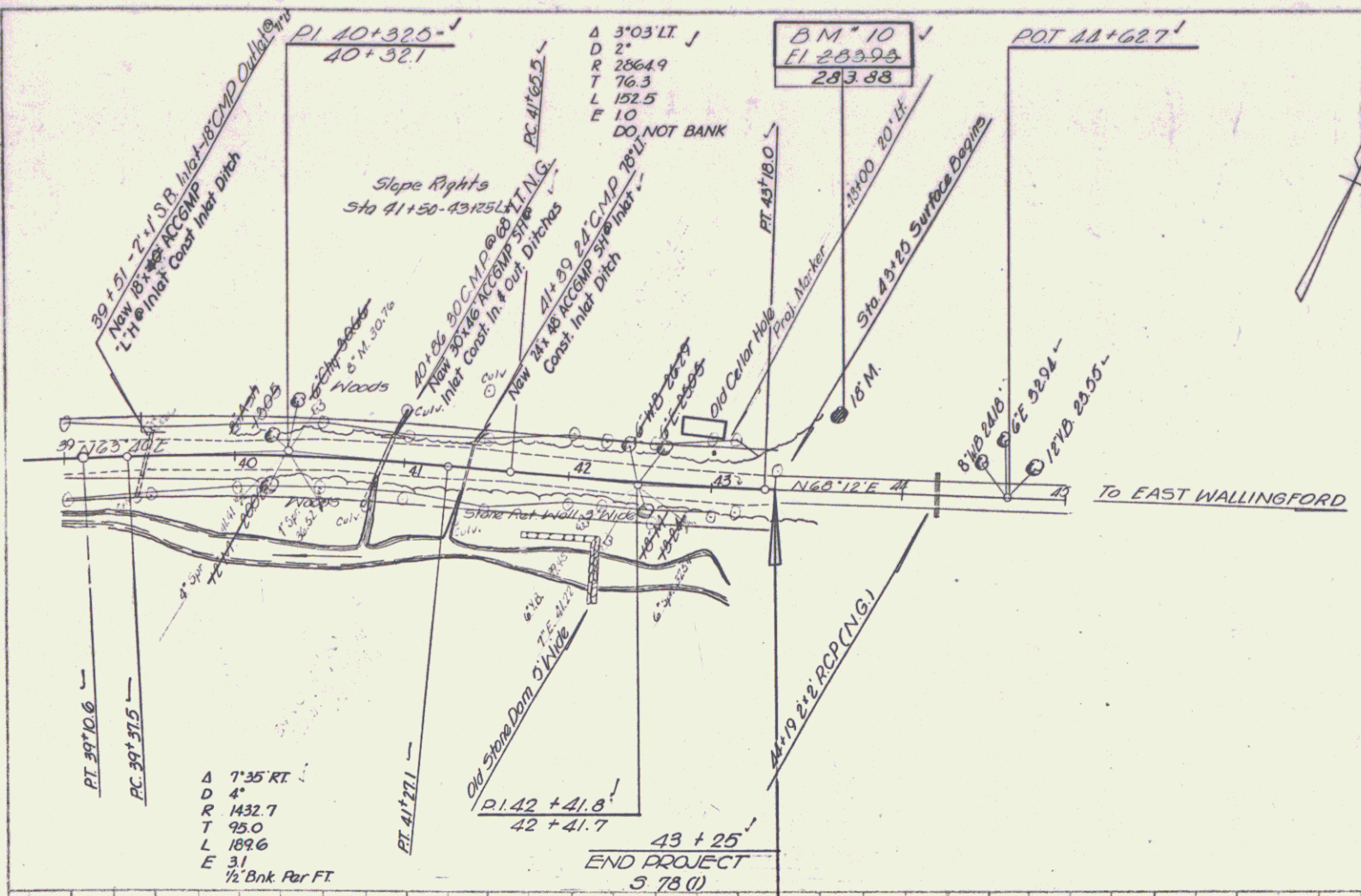
B.M. #6-245 F.R.I. Sta. 27+35.12 Hemlock Elevation 21363  
 B.M. #7-215 F.R.I. Sta. 31+13.15 Hemlock Elevation 23265  
 B.M. #8-177 F.R.I. Sta. 34+12.36 Elm Elevation 24762  
 B.M. #9-22 F.L.I. Sta. 37+88.12 Ash Elevation 26694

B.M. #7A Rt. of Sta. 31+52 Spot on ledge Elev. 23217  
 B.M. #8A 37' Rt. Sta. 35+11 Spot on ledge Elev. 24574  
 B.M. #9B 22' Rt. Sta. 37+80 S.T.T. 12' Ash Elev. 26674

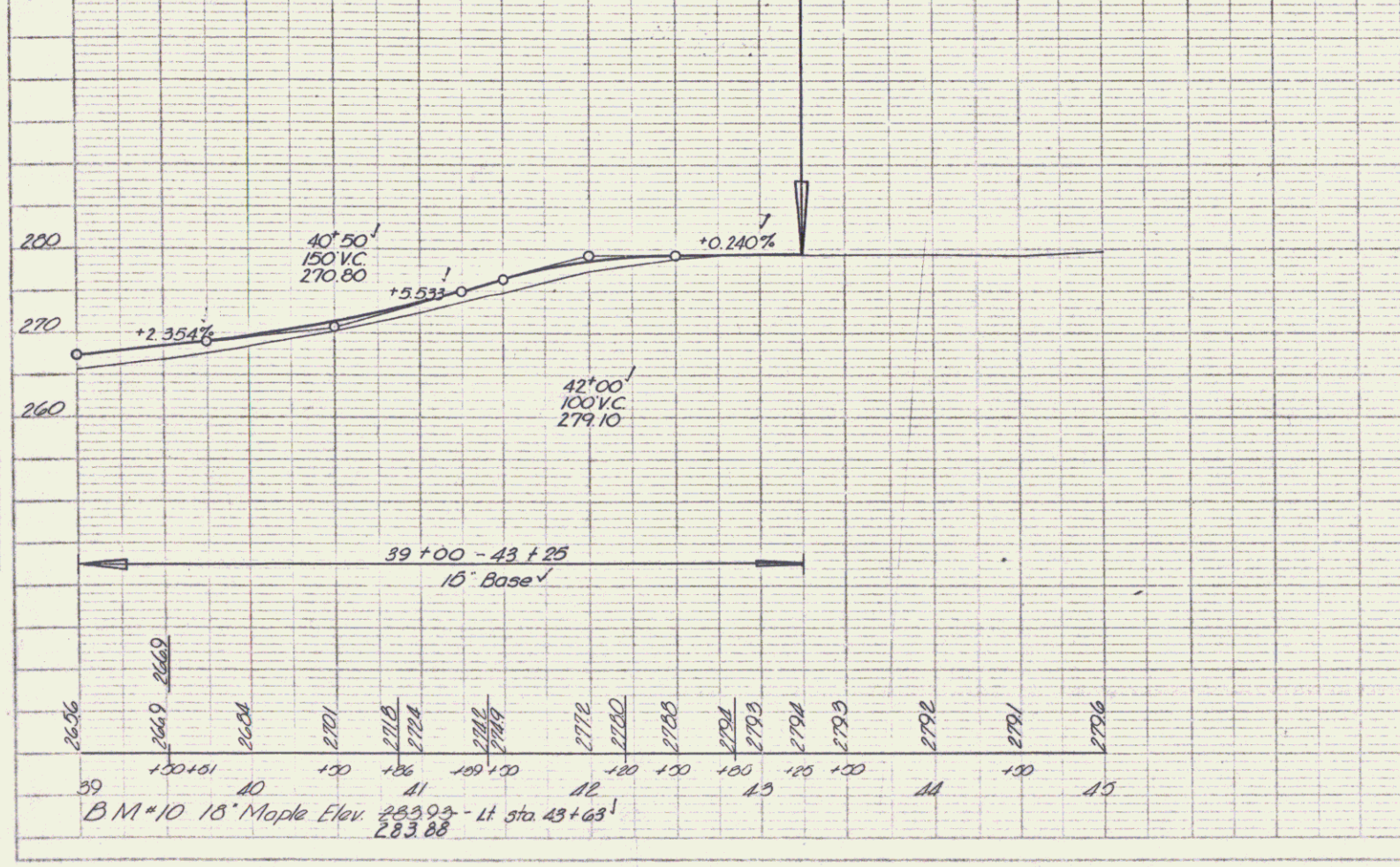
WALLINGFORD  
 Project S No. 78 (1)  
 Sheet 13 of 24

PLAN  
 SHEET NO. 3152  
 DATE 10/10/10  
 DRAWN BY [unclear]  
 CHECKED BY [unclear]  
 PROJECT NO. 10706

PROFILE  
 SHEET NO. 3152  
 DATE 10/10/10  
 DRAWN BY [unclear]  
 CHECKED BY [unclear]  
 PROJECT NO. 10706



Two Cable Guard Rail Rt 39+00-39+31  
 Wood Guide Posts Rt 40+75-41+71  
 CONSTR. DRIVE 39+25 LT.  
 CONSTR. TURNOUT 40+50-43+00 Rt



WALLINGFORD  
 Project 5 No 78C11  
 Sheet 14 of 24