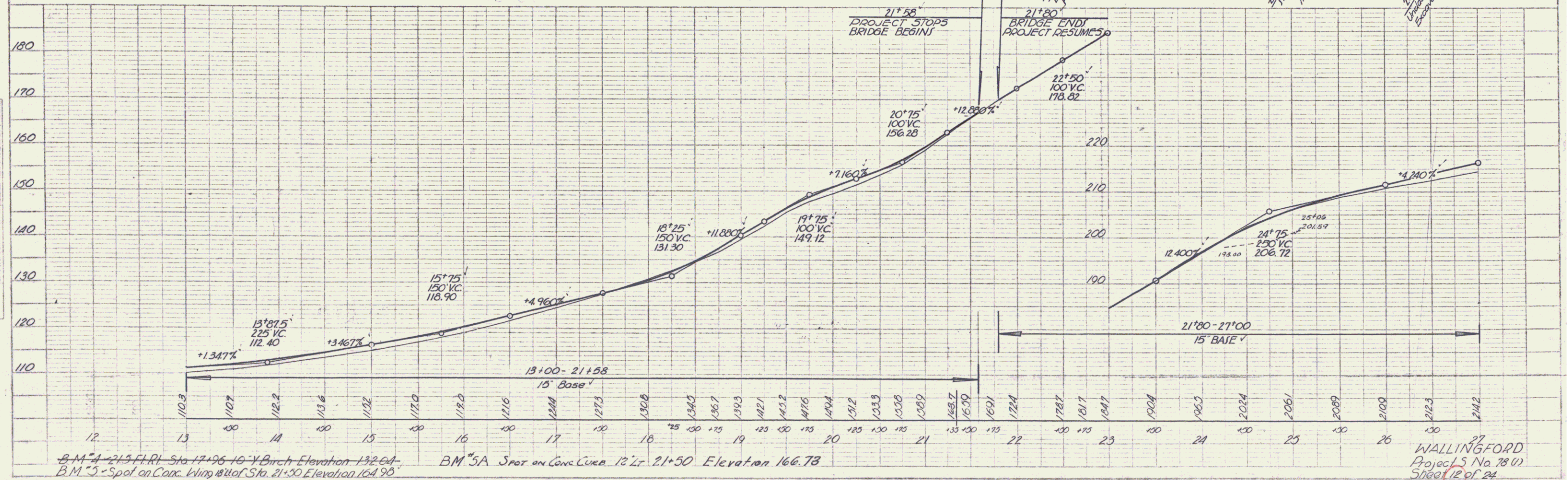
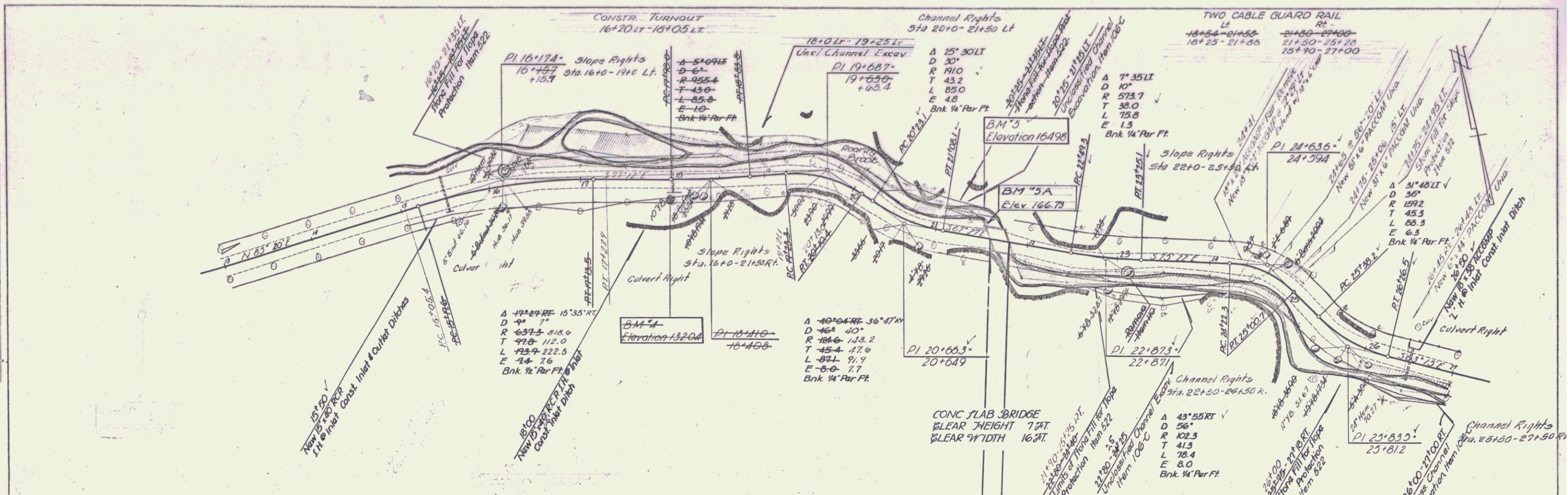


PLAN
 DRAWN BY: A. Lamm
 CHECKED BY: Palmer
 DATE: 7-32
 SHEET NO. 12 OF 24

PROFILE
 DRAWN BY: B. Palmer
 CHECKED BY: Palmer
 DATE: 7-32
 SHEET NO. 12 OF 24



B.M. #4 - 21.5 FT RL Sta. 17+96.16 - Y Birch Elevation 132.04
 B.M. #5 - Spot on Conc. Wings 18' of Sta. 21+50 Elevation 164.98

WALLINGFORD
 Project No. 78 (1)
 Sheet 12 of 24

PLATE 1 - PLAN PROFILE - P. & H. R. STUBBS
 SCALE: 1" = 40' HORIZ. 1" = 10' VERT.