

**INDEX OF SHEETS**

SHEET NO. 1	TITLE PAGE	
2	TYPICAL CROSS-SECTION OF IMPROVEMENT	GENERAL MIXED-IN-PLACE SURFACE COURSE
3	SHAKING AND MIXING TABLES	
4-16	PLAN AND PROFILE SHEETS	
17	STANDARD STRUCTURE SHEET	5-20 PIPE CULVERTS
18		5-30 GUARD RAIL
19	BRACKETS, SIGNS AND LIGHTS	SB-4
20-54	CROSS SECTIONS	

STANDARD SHEET 3-20 SUBMITTED TO THE CHIEF ENGINEER ON MAY 15, 1933.  
STANDARD SHEET 3-30 SUBMITTED TO THE CHIEF ENGINEER ON MAY 15, 1933.

FED. ROAD DIST. NO.	STATE	PROJECT NO.	YEAR	SHEET NO.	TOTAL SHEETS
9	VT.	153	1933	1	54

**STATE OF VERMONT  
STATE HIGHWAY DEPARTMENT**

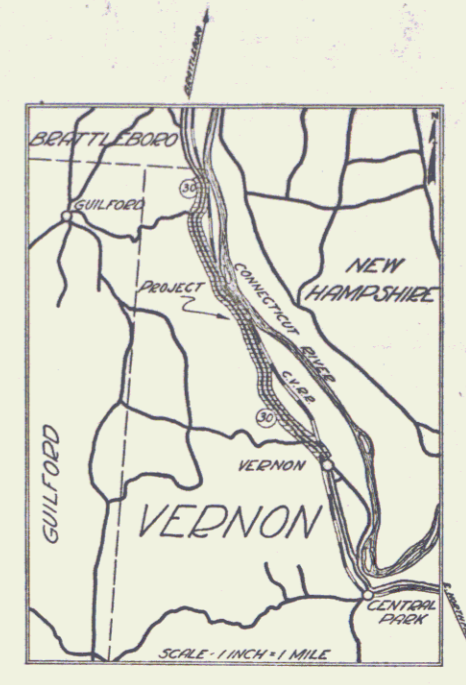
**PLAN AND PROFILE OF PROPOSED  
STATE HIGHWAY**  
NATIONAL RECOVERY SECONDARY PROJECT

**TOWN OF VERNON**  
**BRATTLEBORO-VERNON ROAD** *Rte VT 142*

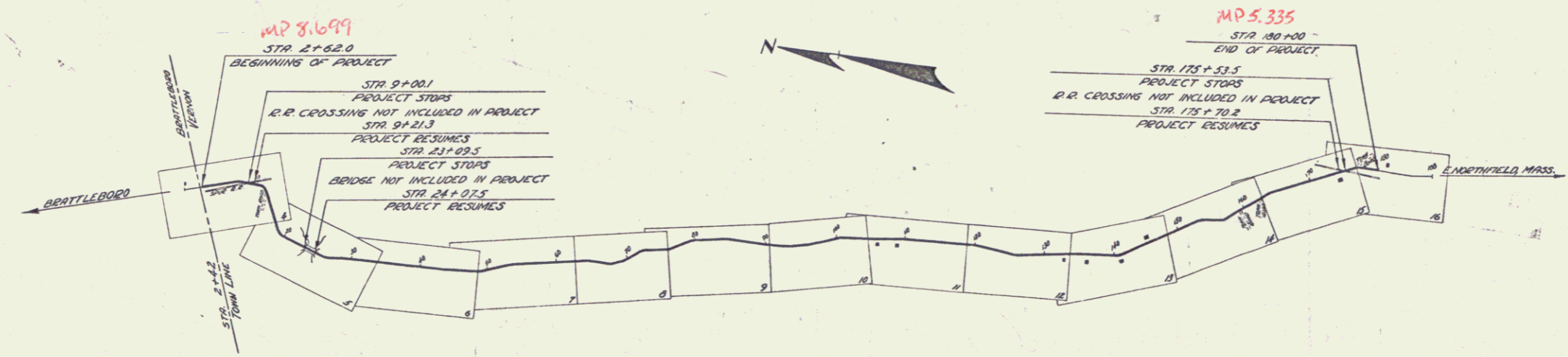
FROM A POINT 20 FT. SOUTH FROM THE BRATTLEBORO-VERNON TOWN LINE SOUTHERLY 3.333 MILES TO A POINT 430 FT. SOUTH FROM CENTRAL VERMONT RAILROAD CROSSING

*Pin# 998630*

LENGTH OF PROJECT 17,598.5 FT. = 3.333 MILES



(To Be Returned to R.O.W. Division)  
Town of Vernon  
PERPETUAL  
TOWN FILE  
HIGHWAY DIVISION



**CONVENTIONAL SIGNS**

COUNTY LINE	GROUND ELEVATION	LINE
TOWN LINE	GRADE ELEVATION	LINE
FENCE LINE		
STONE WALL		
UNFENCED PROPERTY		
GUARD RAIL		
TRAVELED WAY		
RAILROAD		
RETAINING WALL		
CENTER LINE		
SURVEY LINE		
CULVERT		
DROP INLET		
TROLLEY POLE		
POWER POLE		
TELEPHONE POLE		
TREES		
HEDGE		

**CURVE DATA**

DEFLECTION ANGLE	Δ
DEGREE OF CURVE	D
RADIUS OF CURVE	R
TANGENT DISTANCE	T
LENGTH OF CURVE	L
EXTERNAL DISTANCE	E
POINT OF INTERSECTION	P. I.
POINT OF CURVE	P. C.
POINT OF TANGENT	P. T.
POINT ON TANGENT	P.O.T.

**SCALES**

TITLE	1" = 500'
PLAN	1" = 50'
PROFILE	1" = 20'
CROSS SECTIONS	1" = 5'

**"NOTE"**  
THESE PLANS ARE SUBJECT TO SUCH REVISIONS AS MAY BE REQUIRED BY THE BUREAU OF PUBLIC ROADS OR THE COMMISSIONER OF HIGHWAYS.  
CONSTRUCTION IS TO BE CARRIED ON IN ACCORDANCE WITH THE STANDARD ROAD AND BRIDGE SPECIFICATIONS OF 1930 WITH ALL SUBSEQUENT APPROVED REVISIONS AND SUCH SPECIFICATIONS AND SPECIAL PROVISIONS AS ARE SUBMITTED WITH THE PLANS.

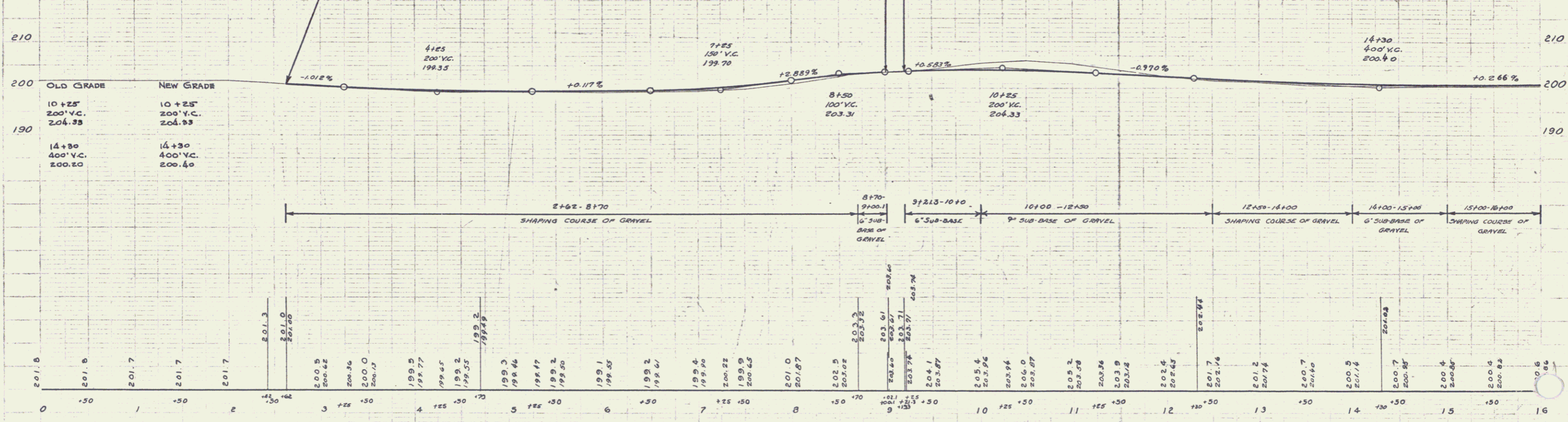
APPROVED: *H. J. Duggan*  
COMMISSIONER OF HIGHWAYS  
SUBMITTED BY ORDER OF THE STATE HIGHWAY BOARD

RECOMMENDED: [Signature]  
DISTRICT ENGINEER BUREAU OF PUBLIC ROADS  
RECOMMENDED FOR APPROVAL: [Signature]  
CHIEF ENGINEER BUREAU OF PUBLIC ROADS  
APPROVED: [Signature]  
DIRECTOR - BUREAU OF PUBLIC ROADS

CORRECT: [Signature]  
ROAD ENGINEER  
SERIES NO. 153 FILED  
SHEET 1 OF 54

CULVERT QUANTITIES				
STA	CULVERT WIDTH	C. REM.	EXCAVATION	Grade Posts
	FT.		LT.	ET.
3+00	15"	40'	1.3	20
11+78-1400				58
12+84-1800				35

N.R.S.  
153 1933 4 54



B.M. #1 Spike in Foot of 24" Elm 16' Lt. Sta 4+21 Elev 200.00  
 B.M. #2 Spike in Foot of 15" Poplar 20' Lt. Sta 12+82 Elev 202.74

SERIES N.R.S. NO. 153  
 SHEET 4 OF 54

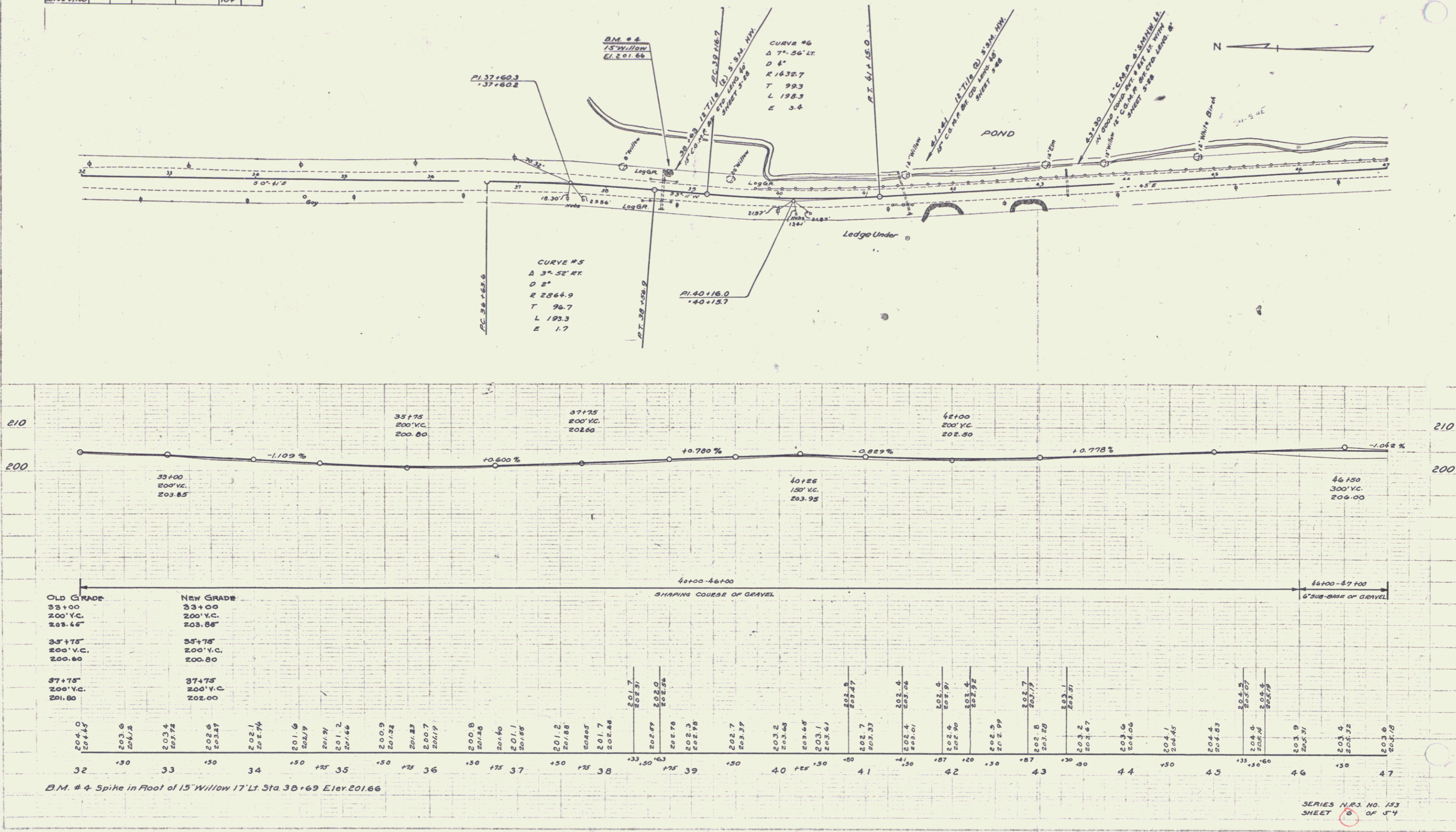


CULVERT QUANTITIES					
STA	SPAN (FEET)	GRADE (FEET)	C.R.M.	EXCAVATION	GRADE PITS
38+63	15"	60"	1.2	28	2
41+41	15"	48"	2.0	46	2
43+30	12"	8"	-	1	7
38+10-47+00					104

N.E.S. PLAN SHEET NO. 153  
153 1933 6 54

PLAN  
SITE SHOWS EXISTING CURVES  
AND PROPOSED CHANGES  
BY  
A.D. MOOD  
AUGUST 1933

A.D. MOOD  
AUGUST 1933

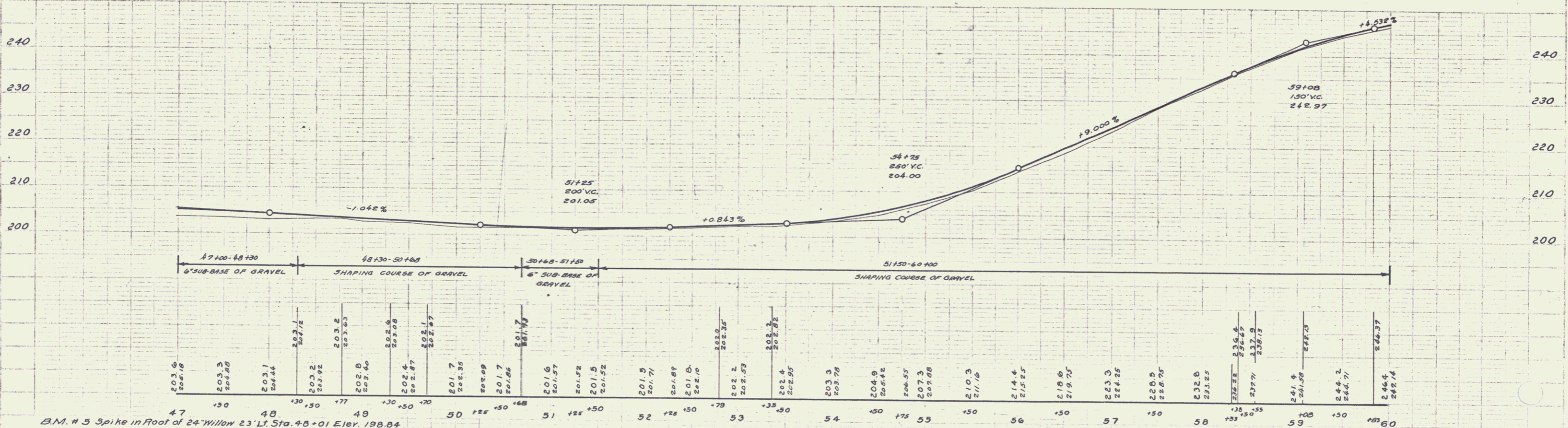
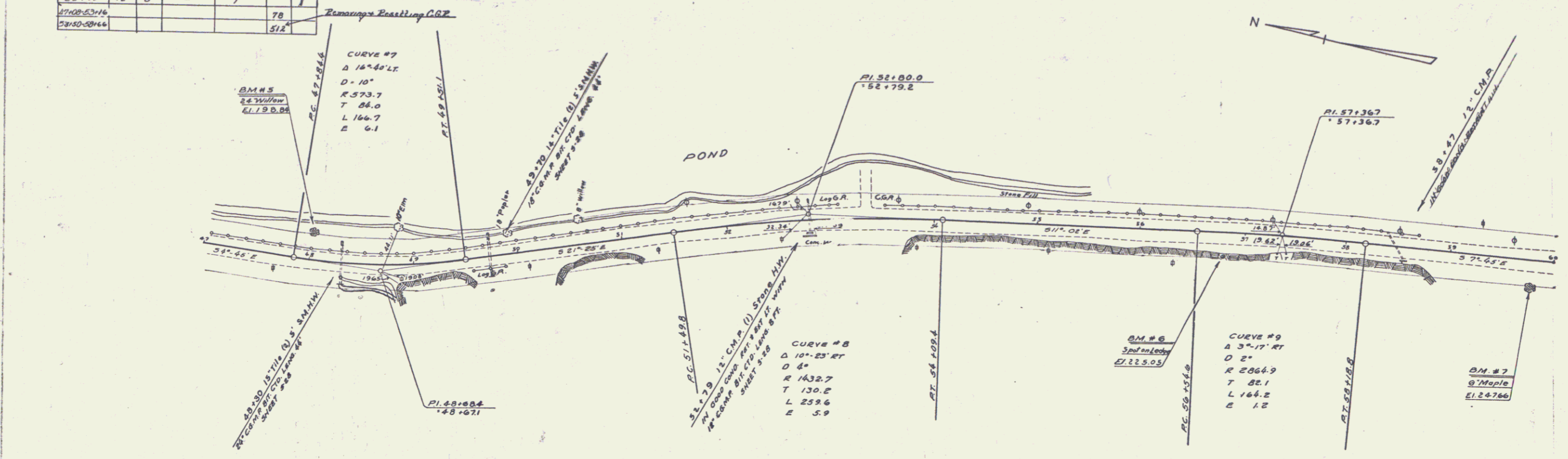


CULVERT QUANTITIES				GRADE POINTS		CULVERT QUANTITIES		
STA.	WIDTH	DEPTH	C.R.M.	EXCAVATION	LT.	RT.	CONC.	STEEL
48+30	26"	44"	E.B.	63				
49+70	18"	44"	E.B.	27			0.6	60
52+79	12"	B'	-	1				
57+00-57+16					78			
58+30-58+66					512			

SERIES NRS. NO. 153  
SHEET 7 OF 54

ADWOOD  
F.W. HANNA  
Aug 23  
9103

ADWOOD  
F.W. HANNA  
Aug 23  
9103



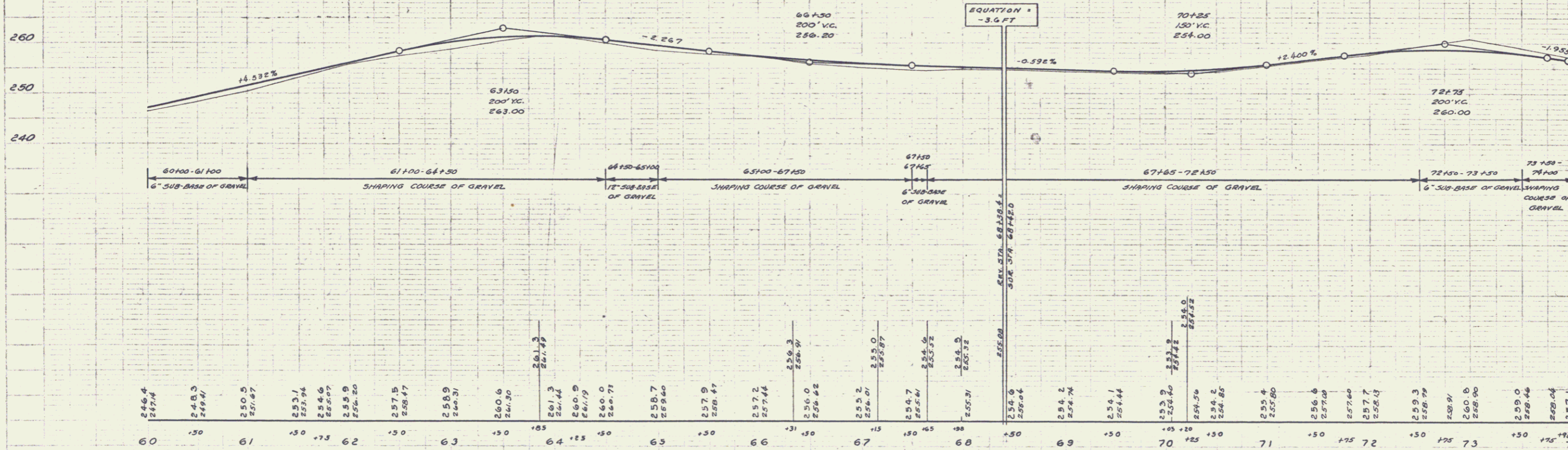
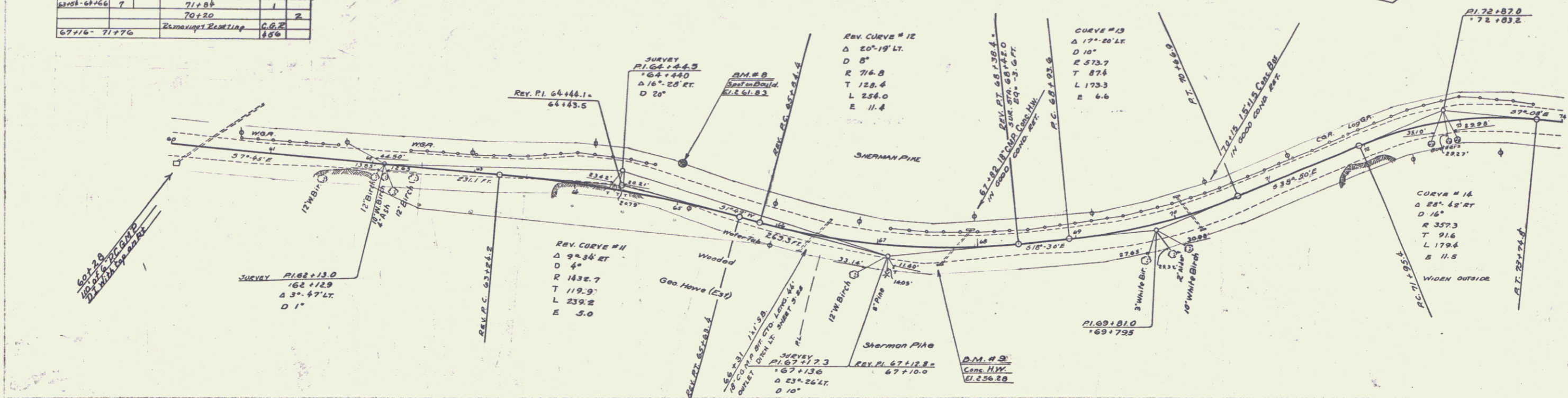
B.M. # 5 Spike in Foot of 24' Willow 23' Lt. Sta. 48+01 Elev. 198.84  
 B.M. # 6 Paint Spot on Ledge 22' Rt. Sta. 56+70 Elev. 225.05  
 B.M. # 7 Spike in Foot of 6' Maple 23' Rt. Sta. 59+81 Elev. 247.66

SERIES NRS. NO. 153  
SHEET 7 OF 54

CULVERT QUANTITIES		GUIDE POSTS			
STA	DIAM/LENGTH	C.R.M.	EXCAVATION	LT	RT
60+31	18" 64'	15	7.2	1	1
70+15	—	—	—	—	2
72+02-72+66	—	—	—	—	5
2" Dia. Manhole Curb		5/8"	Repat		
60+28	1/0	0.1	1.8	5.8	1
Guide Posts		4"	5/4"		
60+42-60+74	1/4	67+02			1
60+82-60+90	1/4	67+02			1
61+01-61+66	7	71+84			2
67+16-71+76	Reinforced Concrete	6.8"	18.8		

A.D. Moore  
 Civil Engineer  
 No. 1000  
 St. Paul, Minn.

A.D. Moore  
 Civil Engineer  
 No. 1000  
 St. Paul, Minn.



B.M. # 8 Paint Spot on 4 Yr Boulder 21' Lt Sta 64+97 Elev. 261.03  
 B.M. # 9 Paint Spot on Conc. Cully. H.W. 17.5' Ft. Sta. 67+63 Elev. 256.28

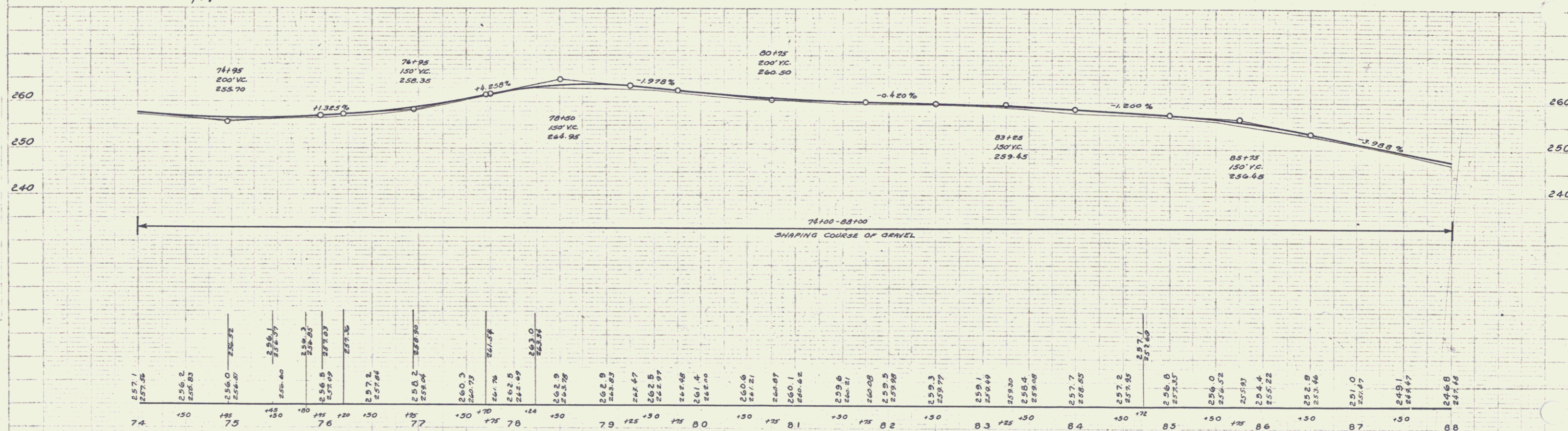
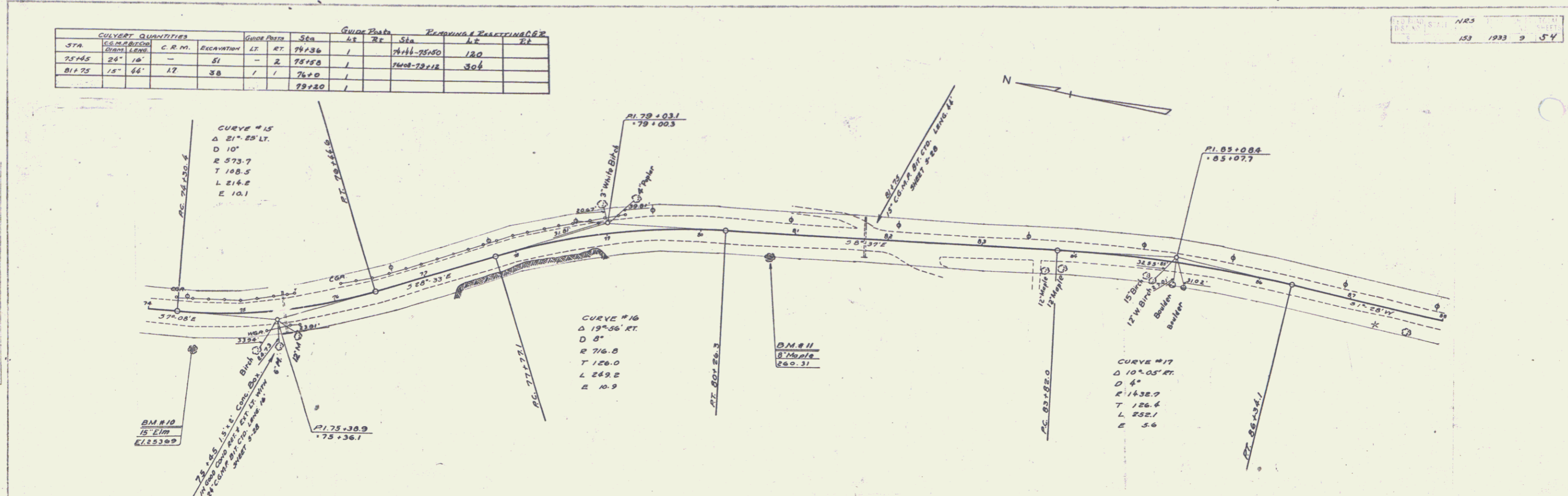
6

STA	CULVERT QUANTITIES		GUIDE POSTS		PLANNING & EXISTING C&G		
	W.C. PERSON	C.R.M.	Excavation	LT	RT	Sta	LR
75+45	24"	16"	51	-	2	74+36	120
81+75	18"	16"	38	1	1	76+0	304
						79+20	

NRS  
153 1933 9 54

PLAN  
A.D. Wood  
F.W. Hayward  
8/12/33

PLAN  
A.D. Wood  
F.W. Hayward  
8/12/33



BM. #10 Spike in Root of 15' Elm 36' Rt. Sta. 74+50 Elev. 253.69  
 BM. #11 Spike in Root of 8' Maple 21' Rt. Sta. 80+75 Elev. 260.31

SERIES NRS NO. 153  
SHEET 9 OF 54

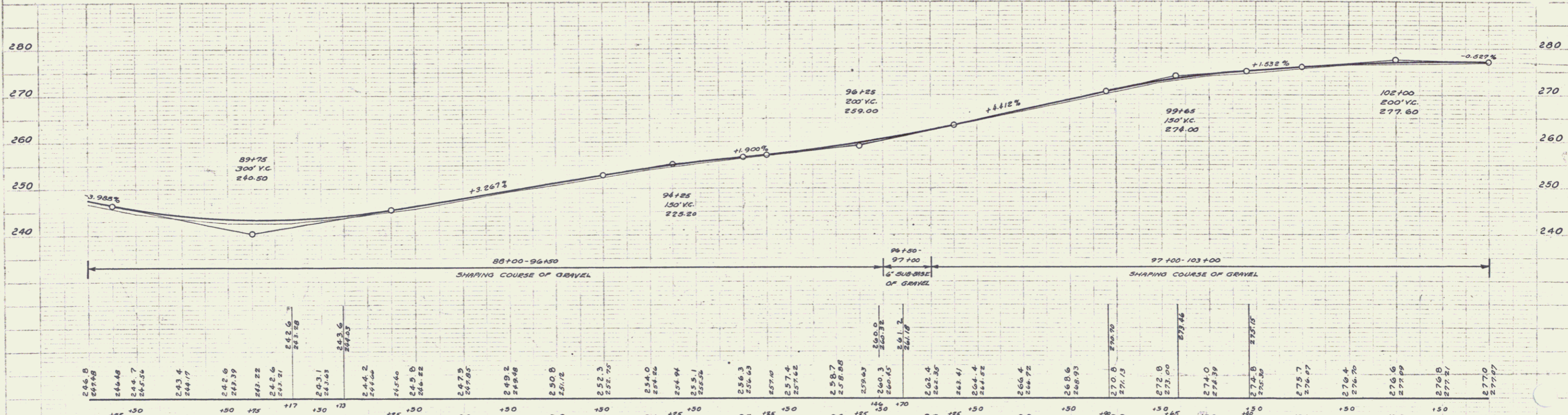
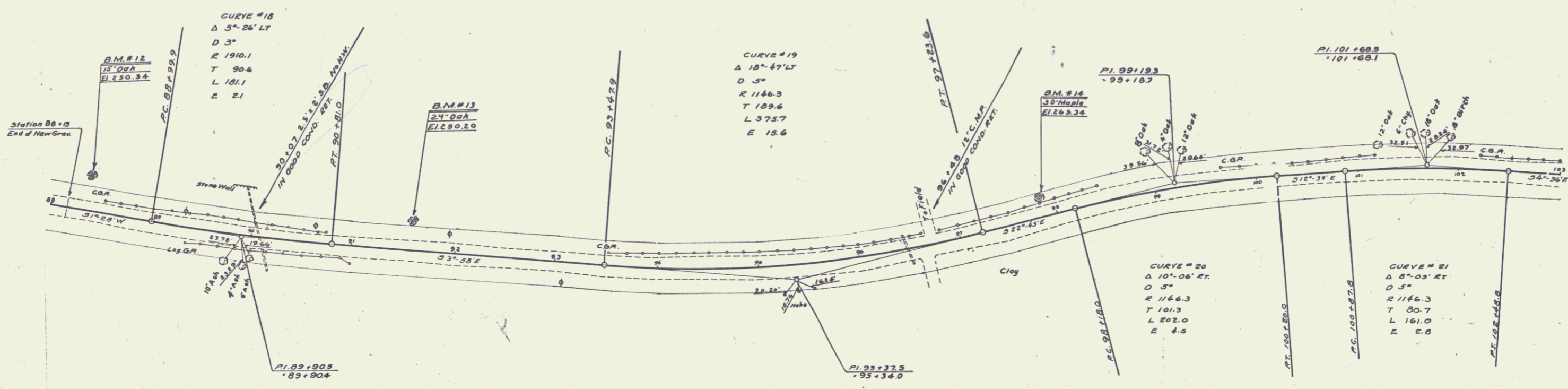
Summary of Readings C.G.P.

STA.	CULVERT QUANTITIES	GUIDE POSTS	50a	44	72
	C.M.P.	C.R.M.	EXCAVATION	LT.	RT.
96+48	-	-	-	-	-
99+25-9106	-	-	-	1	1
99+75	-	-	-	1	1
99+22	-	-	-	1	1
101+22	-	-	-	1	1
102+16	-	-	-	1	1
58+42	-	-	-	-	-

DIST. NO. STA. N.E.S. LOCAL SHEET NO. 10  
 DIST. NO. STA. N.E.S. LOCAL SHEET NO. 10  
 1931 10 54

PLAN  
 AD. HOOD  
 P.M. HANNAH  
 9/13/31

PROFILE  
 AD. HOOD  
 P.M. HANNAH  
 9/13/31



B.M. #12 Spike in Root of 15' Oak 31.5' Lt. Sta. 88+34 Elev. 250.54  
 B.M. #13 Spike in Root of 24' Oak 25' Lt. Sta. 91+56 Elev. 250.20  
 B.M. #14 Spike in Root of 30' Maple 16.5' Lt. Sta. 97+56 Elev. 265.34

SERIES N.R.S. NO. 123  
 SHEET 10 OF 54

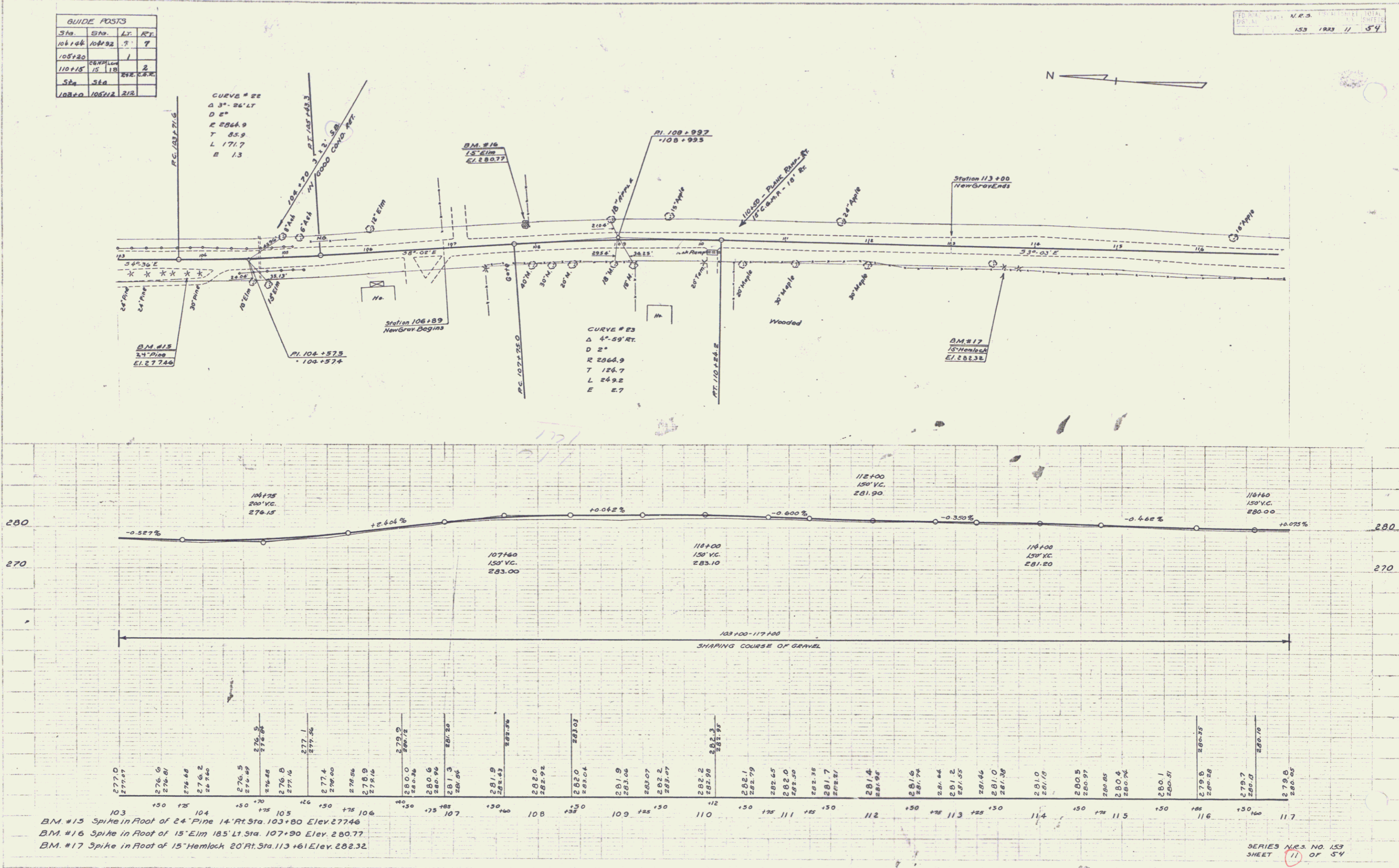
8

Sta.	Dist.	LT	RT
104+80	104+92	5	7
105+20		1	
110+15	15	18	2
Sta.	Sta.	Dist.	Dist.
102+0	105+12	212	

SCALE: 1" = 40' HORIZ. 1" = 10' VERT.  
 153 1933 11 54

A.D. Wood  
 A.W. Hammond  
 S.I. 33

A.D. Wood  
 A.W. Hammond  
 S.I. 33



BM #15 Spike in Root of 24" Pine 14' Rt. Sta. 103+80 Elev. 277.46  
 BM #16 Spike in Root of 15" Elm 185' Lt. Sta. 107+90 Elev. 280.77  
 BM #17 Spike in Root of 15" Hemlock 20' Rt. Sta. 113+61 Elev. 282.32

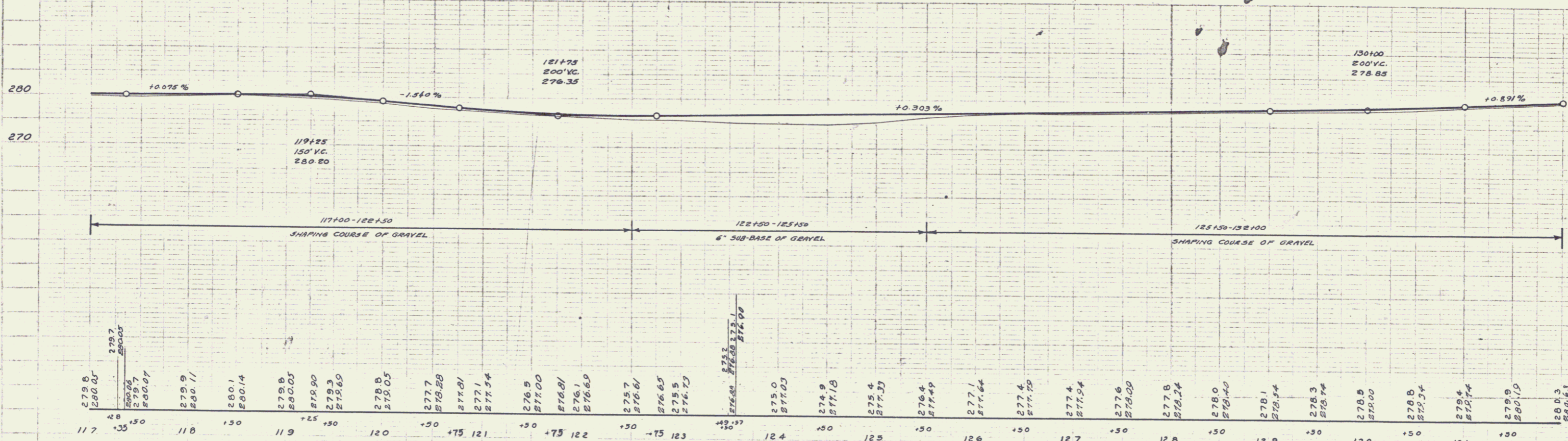
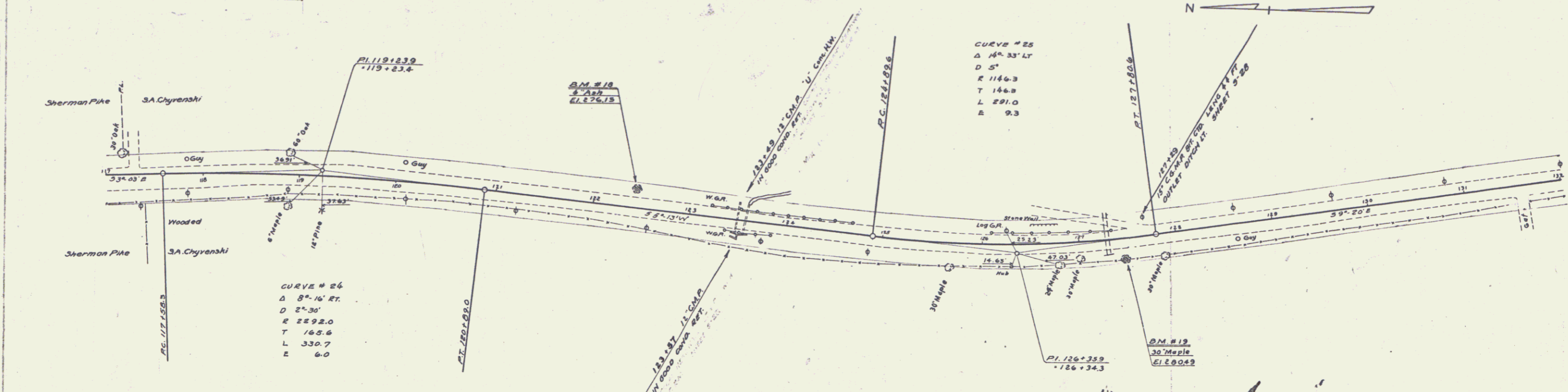
SERIES N.E.S. NO. 153  
 SHEET 11 OF 54

STA	CULVERT QUANTITIES		Grade Posts	
	Excavation	Excavation	LT	RT
127+29	15' 64"	1.9	3.1	- 2
128+75			2.0	
128+85				6
126+85 - 127+29			17	

N.E.S. SHEET NO. 153  
 193 12 54

A.D. Wood  
 P.M. Hartman  
 9/12/33

A.D. Wood  
 P.M. Hartman  
 9/12/33



B.M. # 18 Spike in Root of 6' Ash 15' Lt. Sta. 122+41 Elev. 276.15  
 B.M. # 19 Spike in Root of 30' Maple 17' Rt. Sta. 127+44 Elev. 280.49

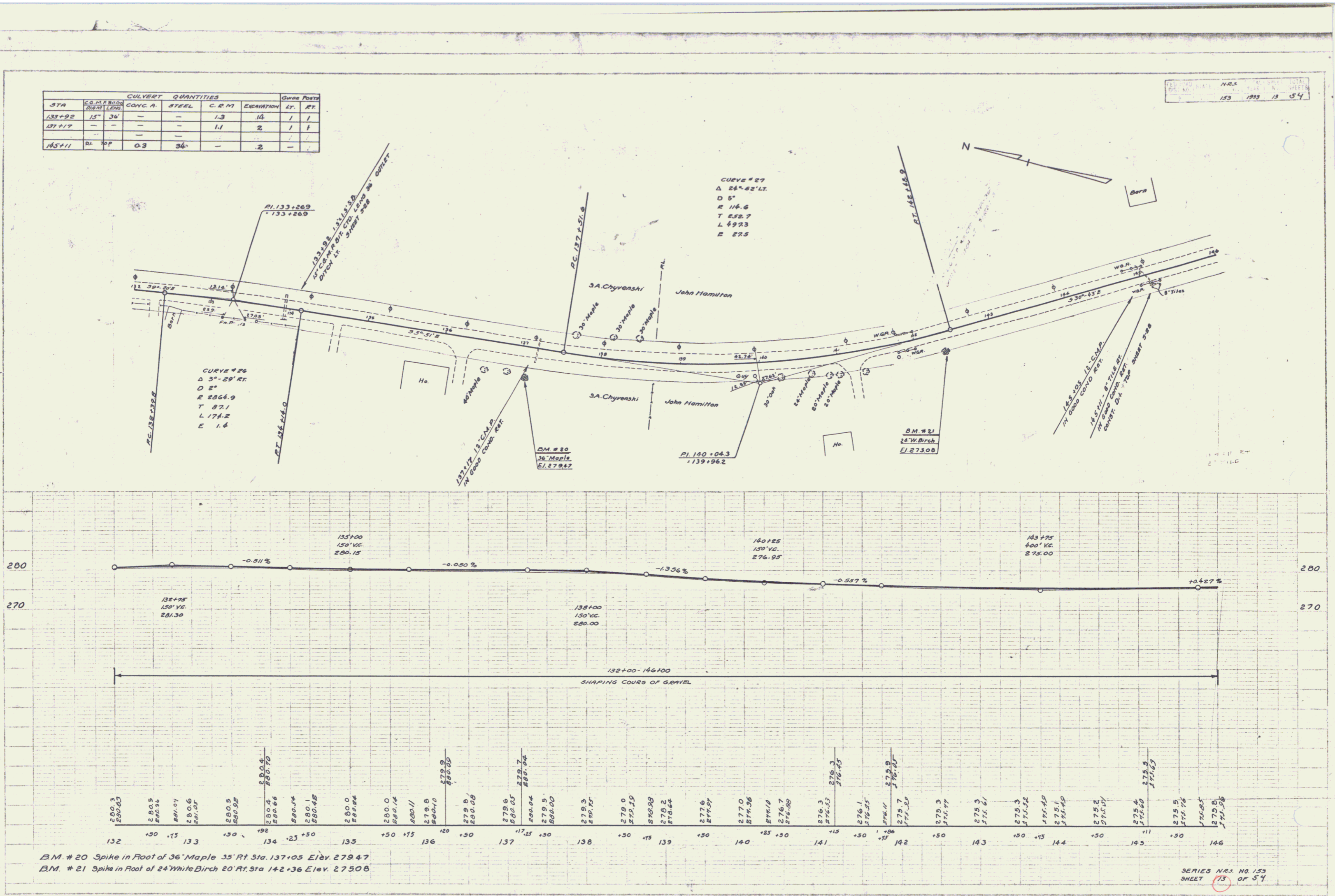
SERIES N.E.S. NO. 153  
 SHEET 12 OF 54

STA	S.G. AT BRIDGE	CULVERT QUANTITIES				Culvert Posts	
		CONC. A.	STEEL	C.R.M.	EXCAVATION	LT.	RT.
133+22	15' 36"	-	-	1.3	14	1	1
137+17	-	-	-	1.1	2	1	1
143+11	BL TOP	0.3	36"	-	2	-	-

153 1933 13 54  
 SERIES NRS. NO. 153  
 SHEET 13 OF 54

P. J. W. WOOD  
 CIVIL ENGINEER  
 27100

P. J. W. WOOD  
 CIVIL ENGINEER  
 27100



B.M. # 20 Spike in Root of 36' Maple 35' Rt. Sta. 137+05 Elev. 279.47  
 B.M. # 21 Spike in Root of 24' White Birch 20' Rt. Sta. 142+36 Elev. 275.08

SERIES NRS. NO. 153  
 SHEET 13 OF 54

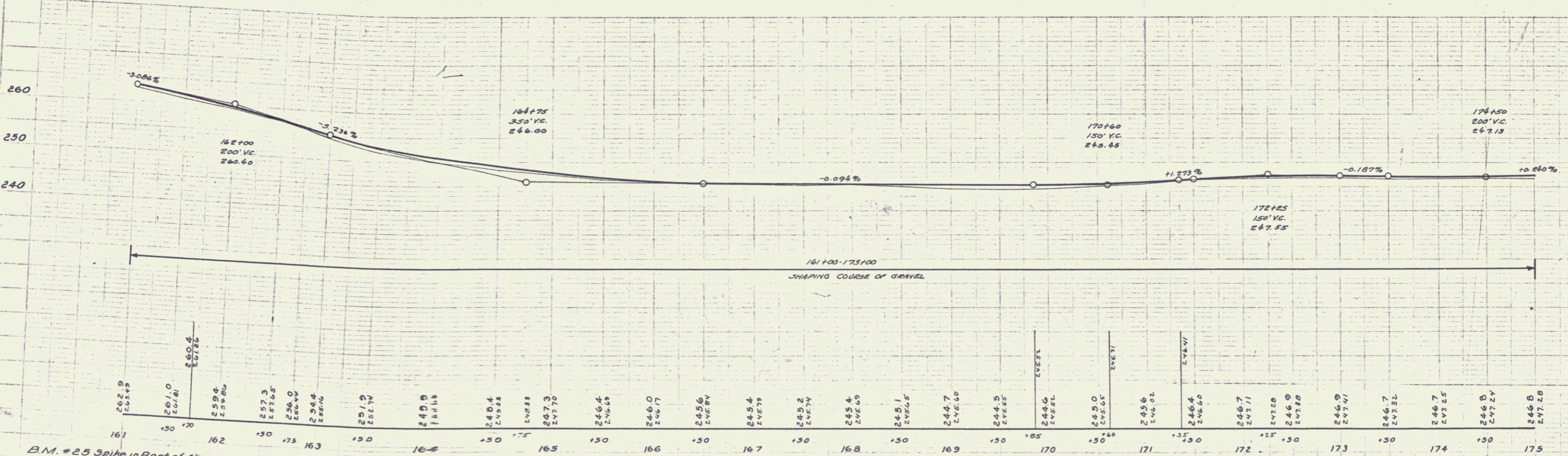
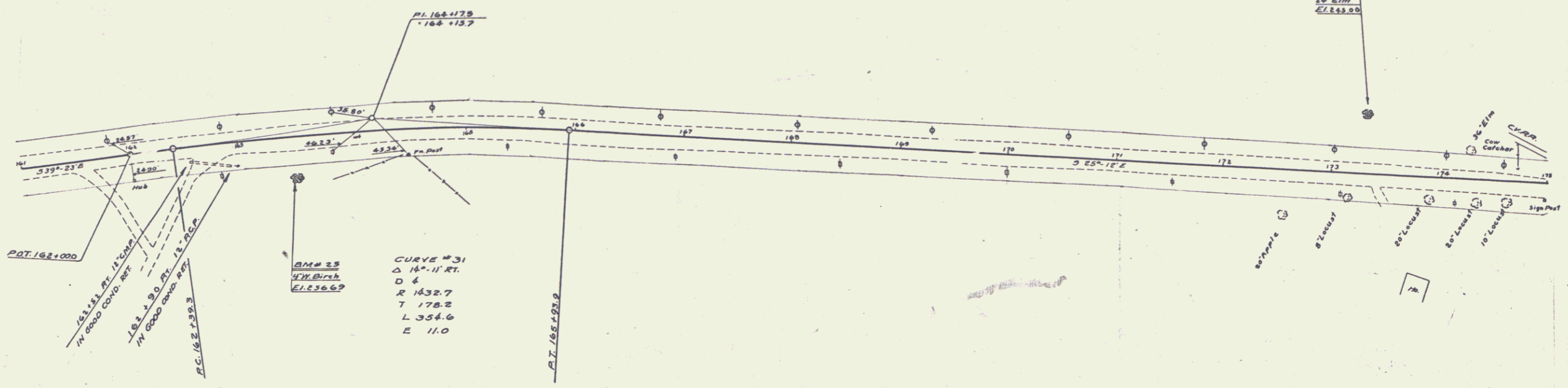


Sta	Side Road	Alt	Top
162.150	Side Road		3

N.R.S. 153 1933 15 57

ADAMS FRANKMANN  
1/10/33

ADAMS FRANKMANN  
1/10/33



B.M. #25 Spike in Root of 4' White Birch 35' Rt. Sta. 163+49 Elev. 256.69  
 B.M. #26 Spike in Root of 24' Elm 51' Rt. Sta. 173+30 Elev. 245.00

SERIES N.R.S. NO. 153  
 SHEET 15 OF 54

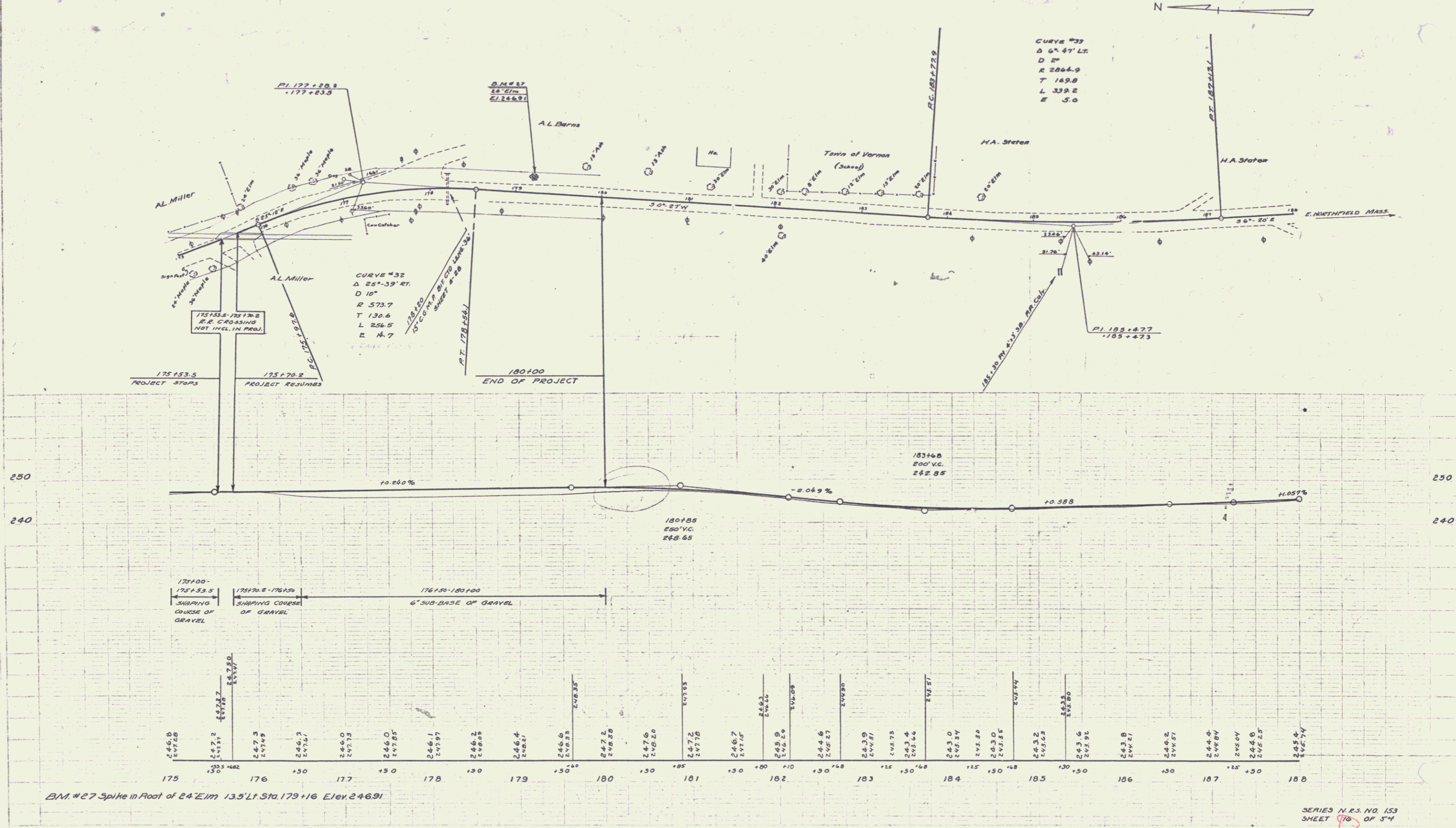
13

CULVERT QUANTITIES					DRAINAGE	
STA.	CULVERT	C.R.M.	EXCAVATION	LT.	RT.	
178+00	15' x 36'	2.7	17	2	1	

N.R.S. NO. 153  
SHEET 16 OF 54

AD. MORGAN  
 CIVIL ENGINEER  
 100 N. MAIN ST.  
 WINDHAM, VT. 05093

10/23/23  
 F. H. HARRIS  
 CIVIL ENGINEER  
 100 N. MAIN ST.  
 WINDHAM, VT. 05093

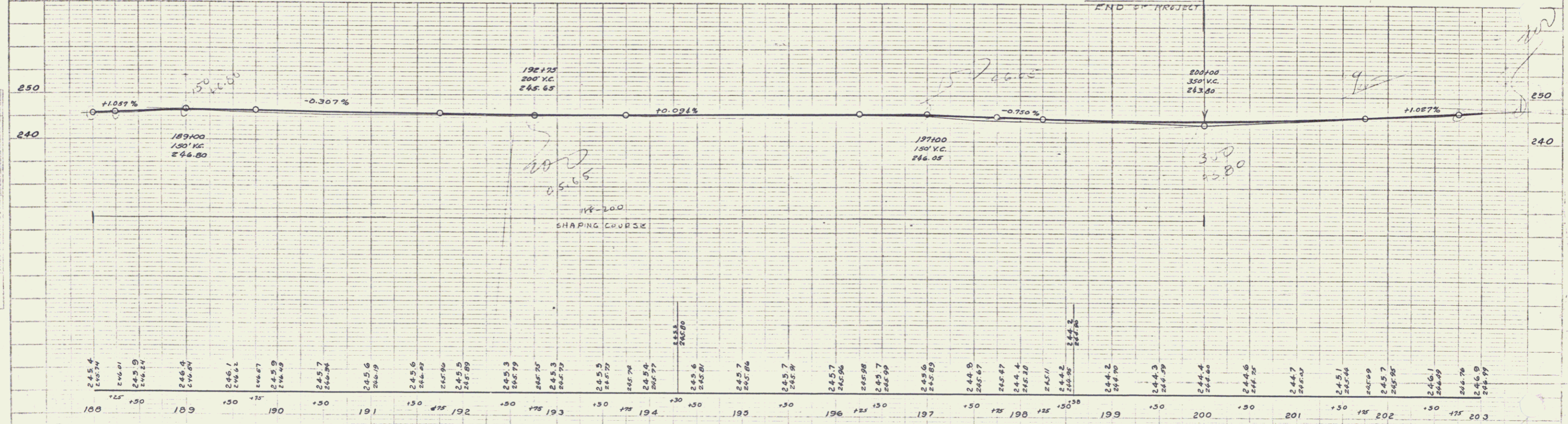
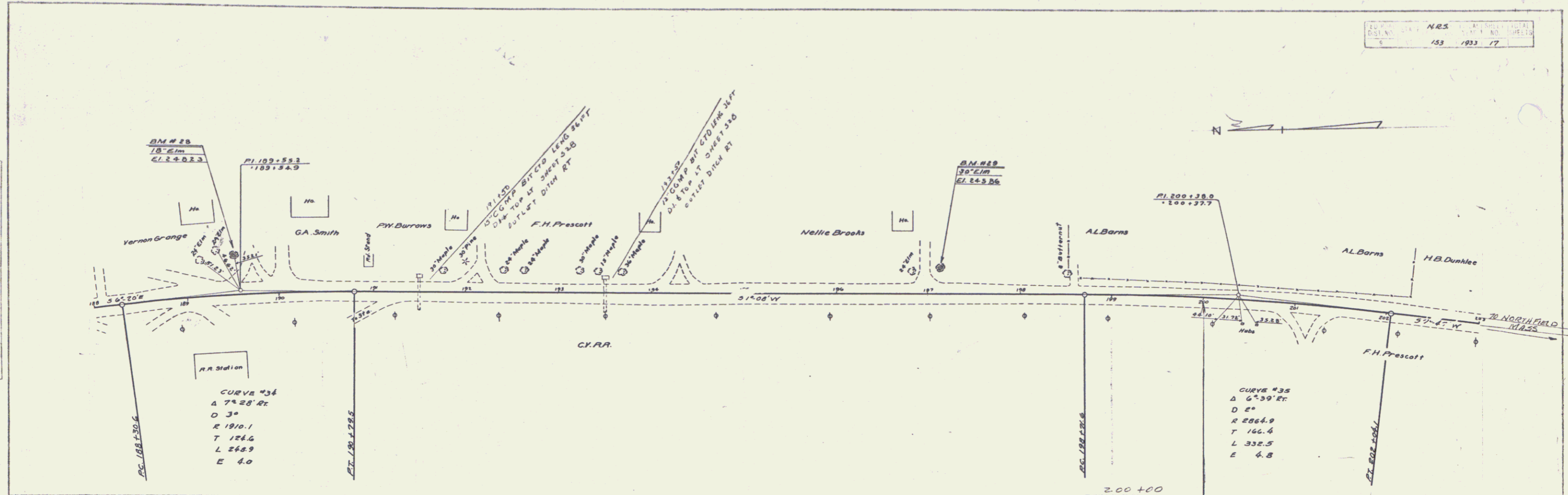


BM. #27 Spike in Root of 24'Eim 13.5' Lt. Sta. 179+16 Elev. 246.91

SERIES N.R.S. NO. 153  
SHEET 16 OF 54

PLAN  
 AD. Wood  
 2/1/33  
 NOTE BOOK  
 1/1/33

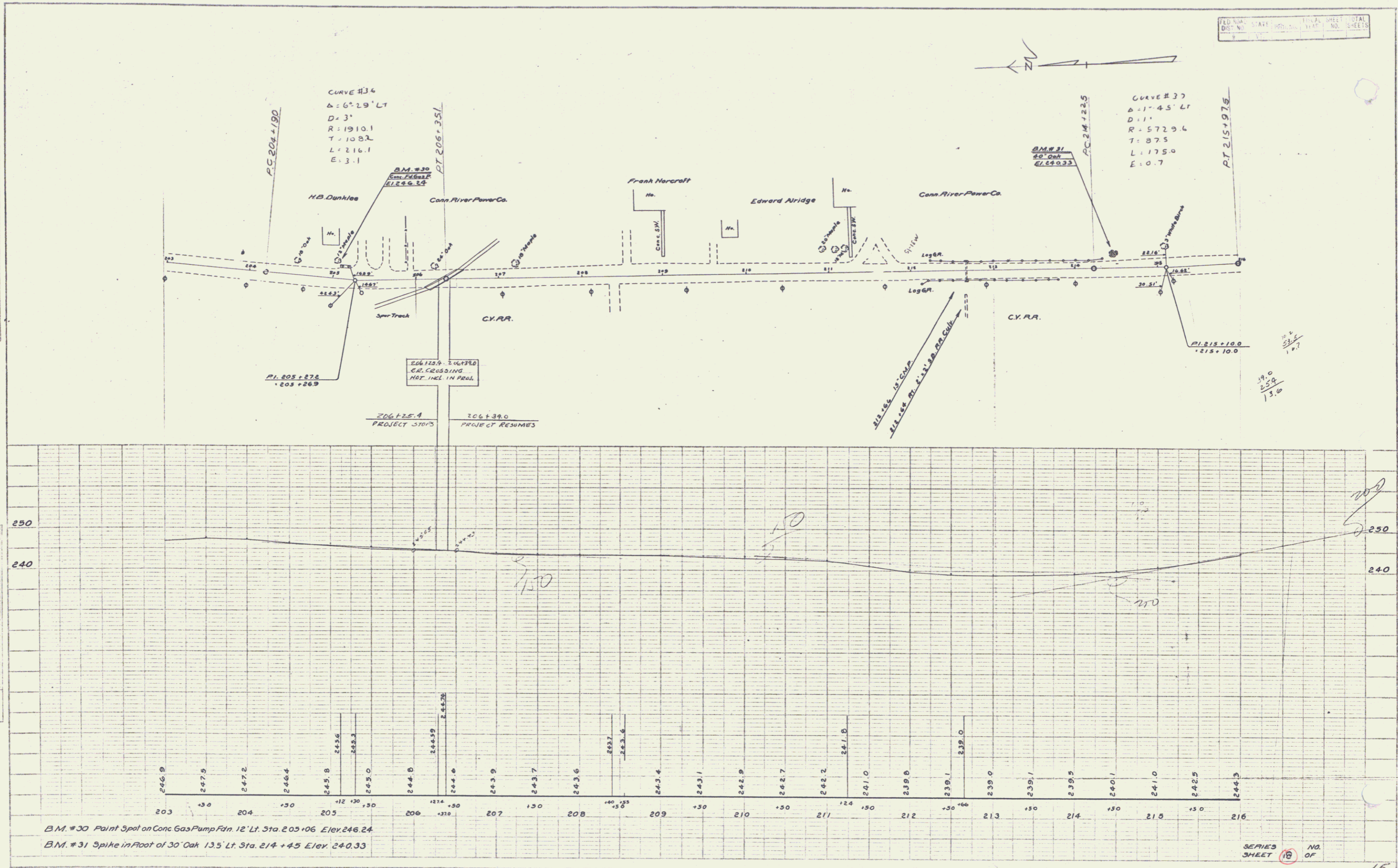
PROFILE  
 AD. Wood  
 2/1/33  
 NOTE BOOK  
 1/1/33



B.M. # 28 Spike in Root of 18' Elm 35' Lt. Sta. 189+49 Elev. 24.823  
 B.M. # 29 Spike in Root of 30' Elm 25' Lt. Sta. 197+11 Elev. 24.586

PLAN  
 PROJECT: *Ch. Highway*  
 SHEET NO.: *15*  
 DATE: *10/15/53*

PROFILE  
 PROJECT: *Ch. Highway*  
 SHEET NO.: *15*  
 DATE: *10/15/53*



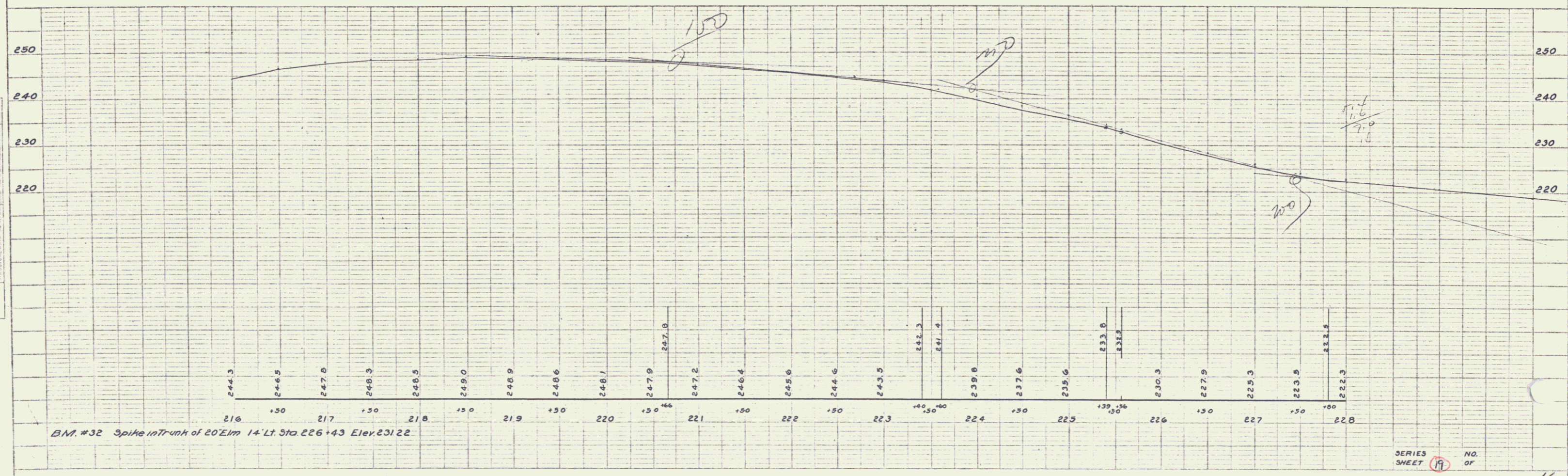
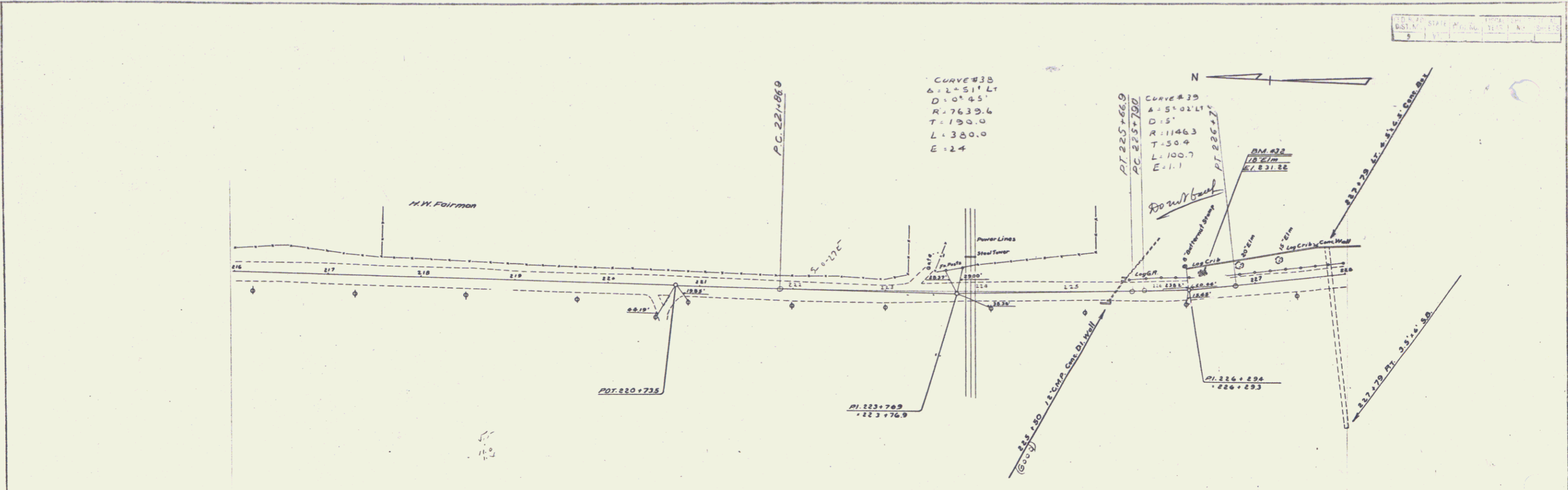
B.M. #30 Paint Spot on Conc Gas Pump Fin. 12' Lt. Sta. 205+06 Elev. 246.24  
 B.M. #31 Spike in Foot of 30' Oak 13.5' Lt. Sta. 214+45 Elev. 240.33

SERIES SHEET 15 OF 15

*15*

PLAN  
 AD. HISSO  
 P. H. HARTMAN  
 5/1/33

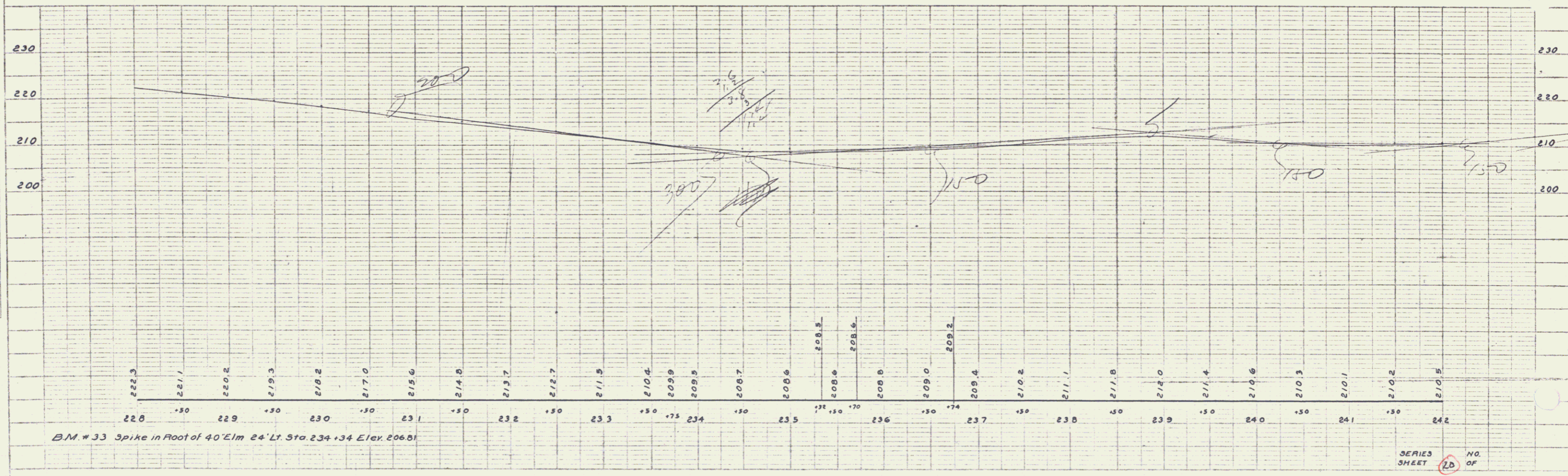
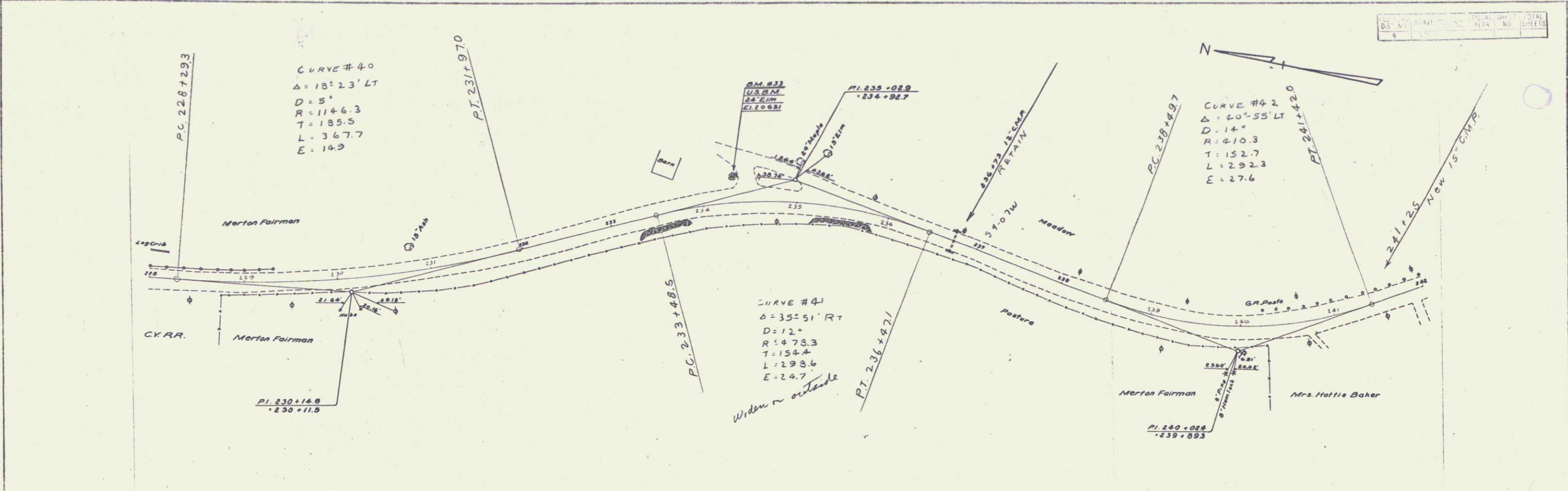
PROFILE  
 AD. HISSO  
 P. H. HARTMAN  
 5/1/33



PLAN  
 DRAWING NO. 300  
 DATE 10/1/24  
 BY A.D. WOOD  
 CHECKED BY A.D. WOOD  
 TITLE ROAD IMPROVEMENT  
 PROJECT NO. 100

PROFILE  
 DRAWING NO. 300  
 DATE 10/1/24  
 BY A.D. WOOD  
 CHECKED BY A.D. WOOD  
 TITLE ROAD IMPROVEMENT  
 PROJECT NO. 100

DATE	BY	NO.	TOTAL SHEETS
10/1/24	A.D. WOOD	300	18



B.M. #33 Spike in Foot of 40' Elm 24' Lt. Sta 234+34 Elev. 206.61

SERIES NO. OF SHEET 18 OF 18

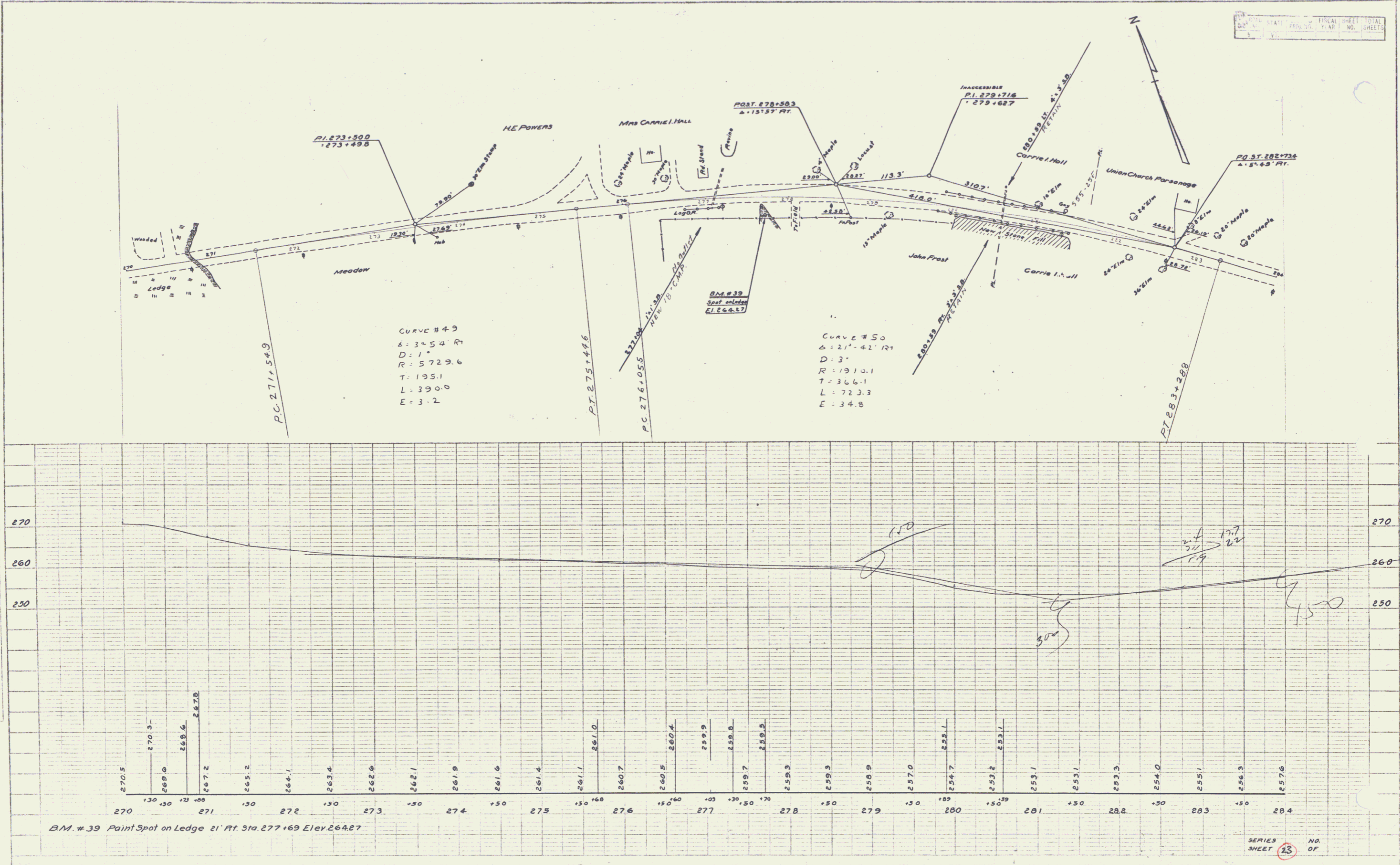
17 18





PLAN  
 DATE: 5/13/33  
 DRAWN BY: A.D. WOOD  
 CHECKED BY: A.M. HAYWARD  
 NO. 583/33

PROFILE  
 DATE: 5/13/33  
 DRAWN BY: A.D. WOOD  
 CHECKED BY: A.M. HAYWARD  
 NO. 583/33

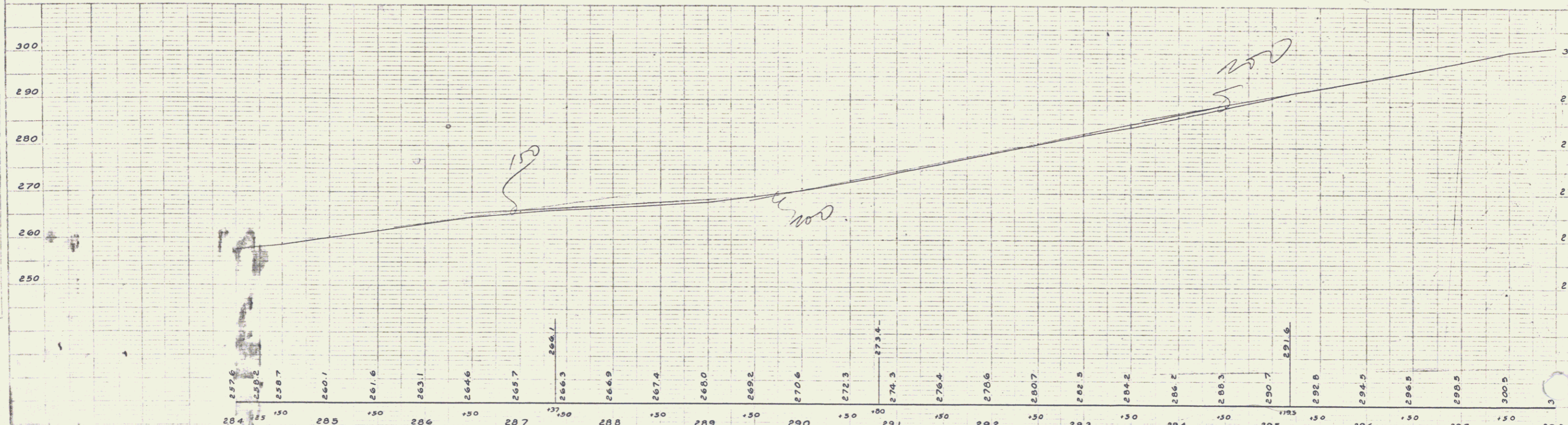
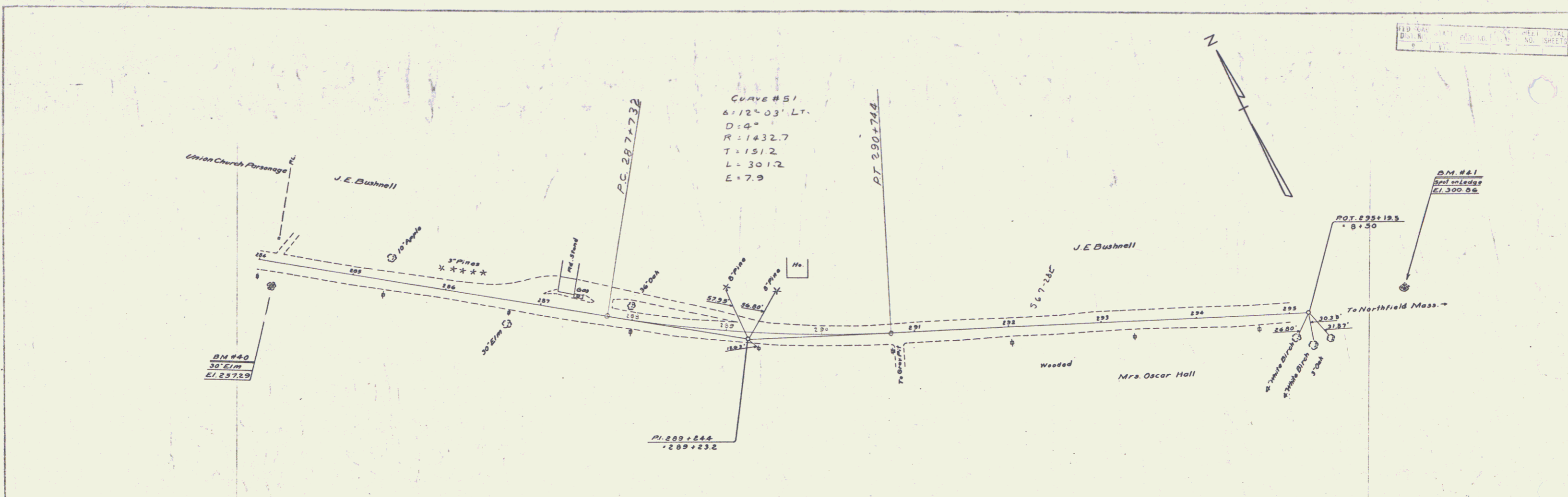


STATE	PROJ. NO.	YEAR	SHEET NO.	TOTAL SHEETS
			23	

SERIES SHEET 23 OF

PLAN  
 D.D. Wood  
 S.D. Hayward  
 3/1/33  
 NOTE: SHOW ALL CHANGES BY DASHED LINES.

PLAN  
 D.D. Wood  
 S.D. Hayward  
 3/1/33  
 NOTE: SHOW ALL CHANGES BY DASHED LINES.



D.M. #40 Spike in Root of 30' Elm 21' Rt Sta 284.16 Elev. 257.29  
 D.M. #41 Point Spot on Ledge 13' Lt. Sta 296.24 Elev. 300.86

SERIES NO.  
 SHEET 24 OF

22