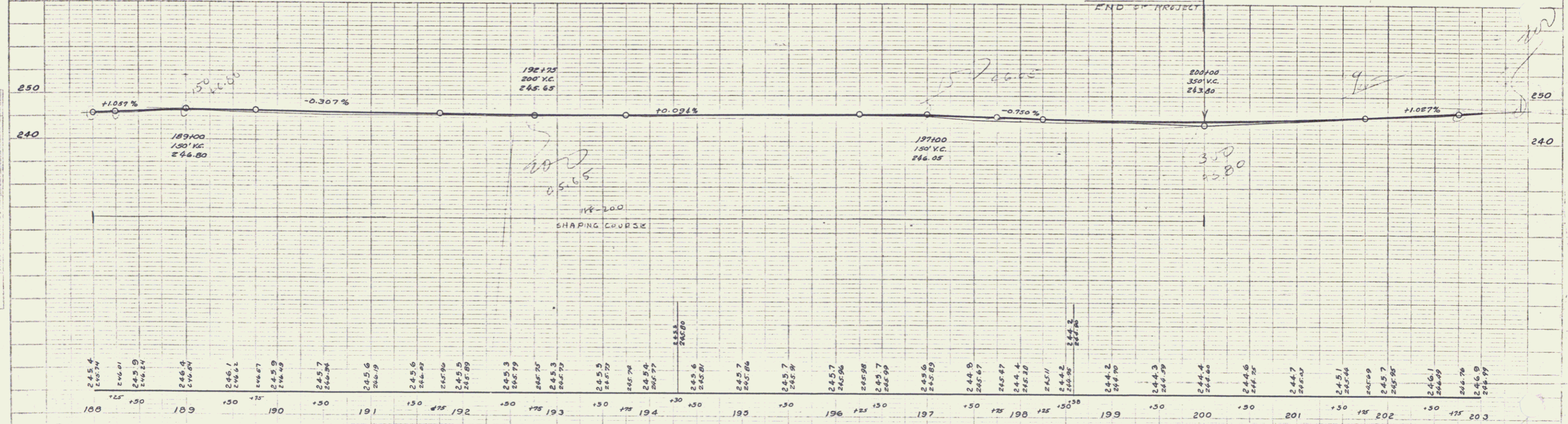
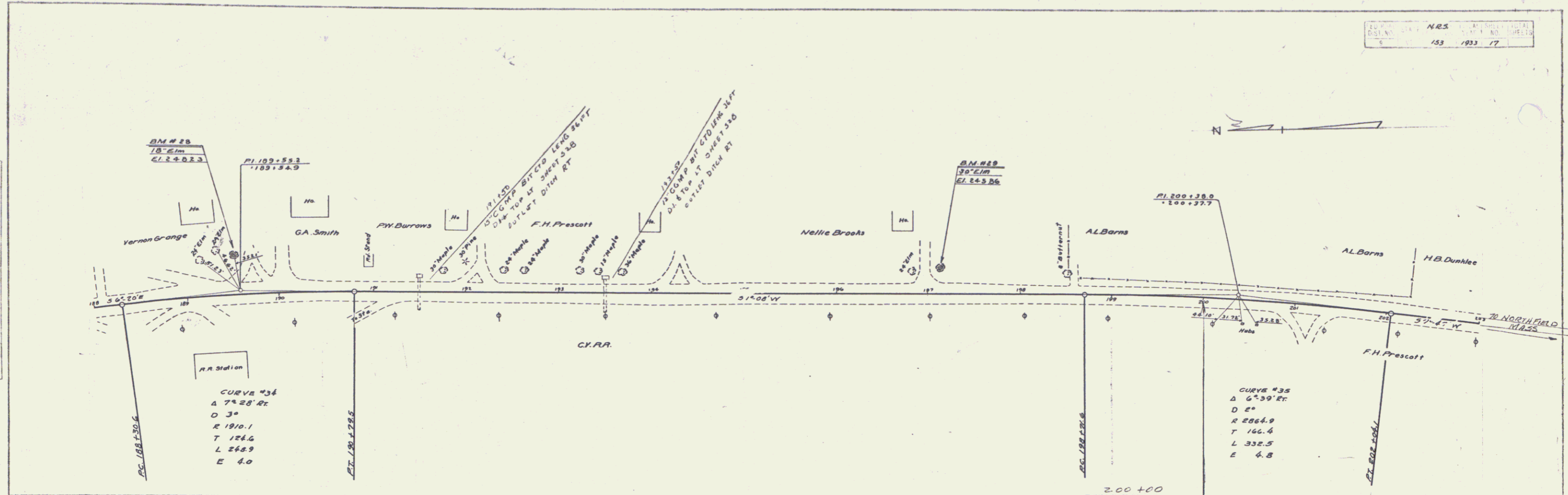


PLAN  
 AD. Wood  
 9/17/33  
 NOTE BOOK  
 100-100-100

PROFILE  
 AD. Wood  
 9/17/33  
 NOTE BOOK  
 100-100-100



B.M. # 28 Spike in Root of 18' Elm 35' Lt. Sta. 189+49 Elev. 24.823  
 B.M. # 29 Spike in Root of 30' Elm 25' Lt. Sta. 197+11 Elev. 24.586