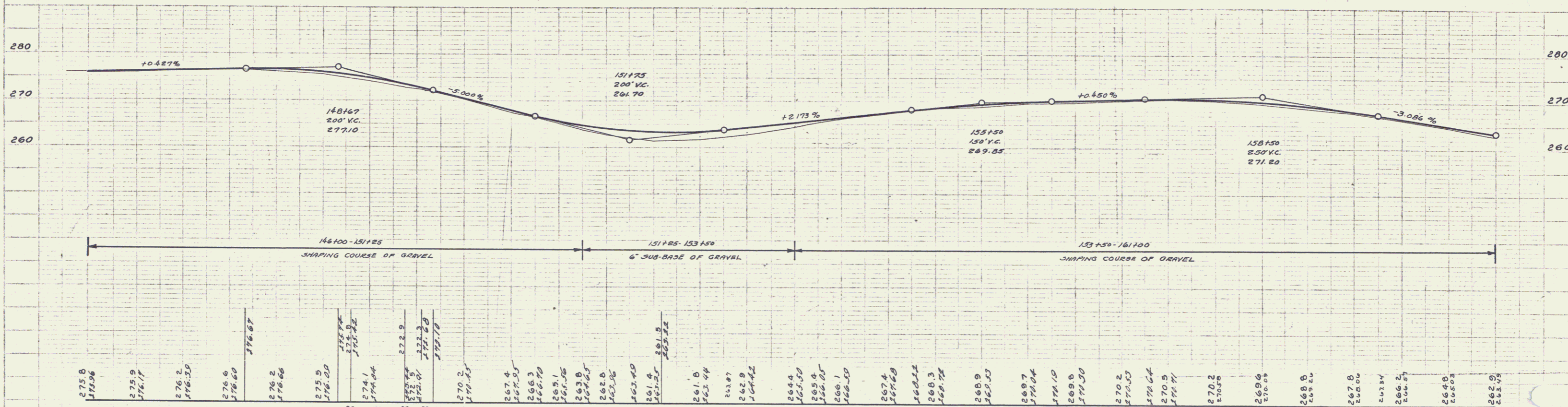
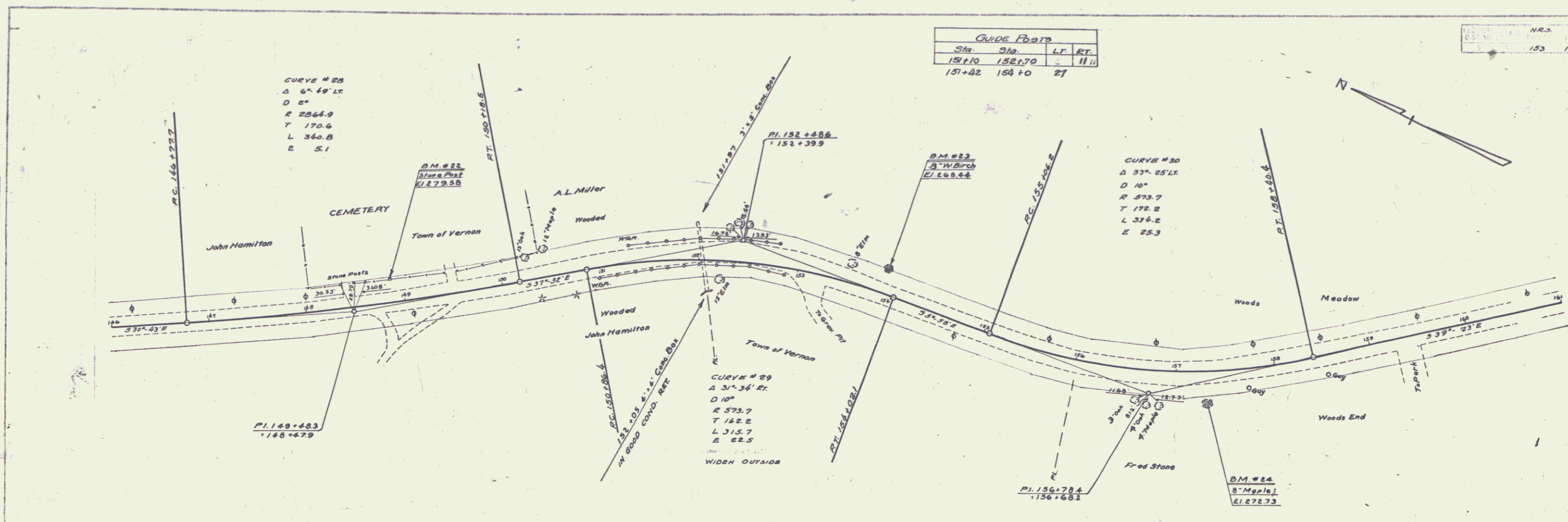


A.D. HARRIS
 A.M. HARRIS
 Apr 73
 87/113



BM #22 Paint Spot on Granite Post 235 Lt Sta. 148+87 Elev. 279.58
 BM #23 Spike in Root of B' White Birch 22' Lt Sta. 153+87 Elev. 268.44
 BM #24 Spike in Root of B' Maple 28' Rt Sta. 157+32 Elev. 272.73

SERIES N.R.S. NO. 153
 SHEET 14 OF 54