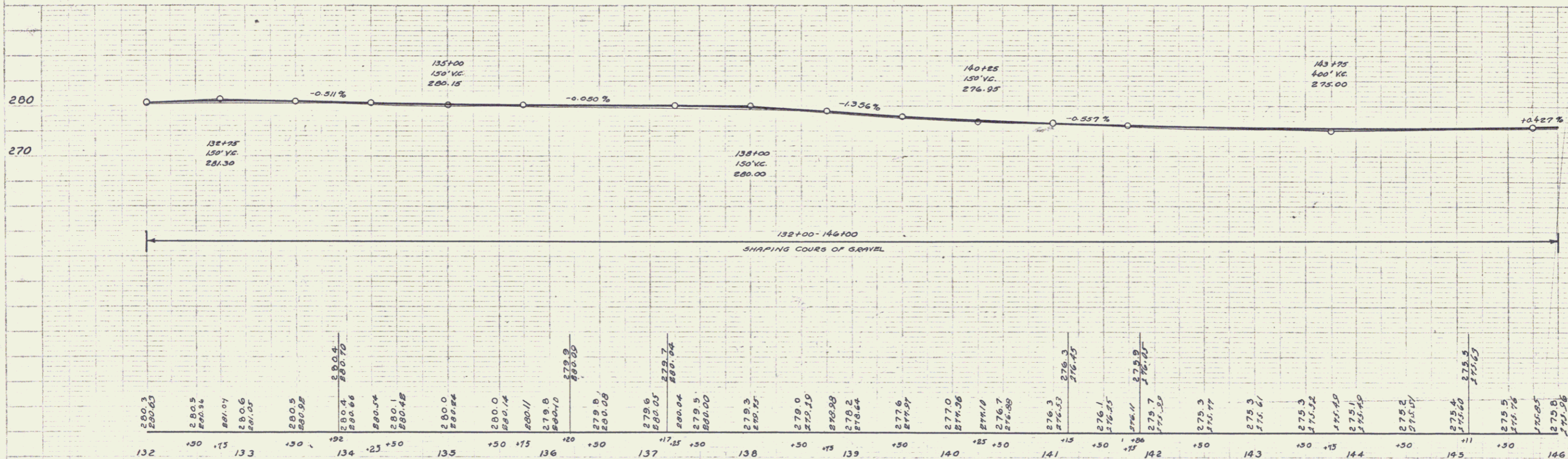
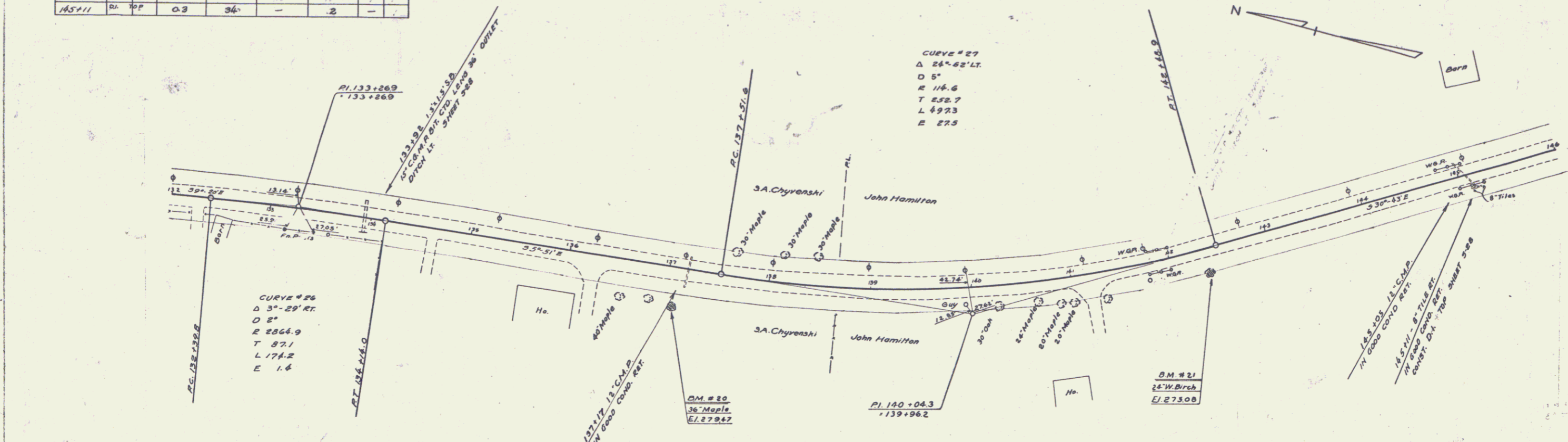


STA	S.G. AT BRIDGE	CULVERT QUANTITIES				Culvert Posts	
		CONC. A.	STEEL	C.R.M.	EXCAVATION	LT.	RT.
133+22	15' 36"	-	-	1.3	14	1	1
137+17	-	-	-	1.1	2	1	1
143+11	24' TOP	0.3	36"	-	2	-	-

DATE	BY	CHECKED	TOTAL SHEETS
1933	1933	1933	54

P.L. 132+00
 P.L. 133+00
 P.L. 134+00
 P.L. 135+00
 P.L. 136+00
 P.L. 137+00
 P.L. 138+00
 P.L. 139+00
 P.L. 140+00
 P.L. 141+00
 P.L. 142+00
 P.L. 143+00
 P.L. 144+00
 P.L. 145+00
 P.L. 146+00



B.M. # 20 Spike in Root of 36' Maple 35' Rt. Sta. 137+05 Elev. 279.47
 B.M. # 21 Spike in Root of 24' White Birch 20' Rt. Sta. 142+36 Elev. 275.08

SERIES N.R. NO 153
SHEET 13 OF 54