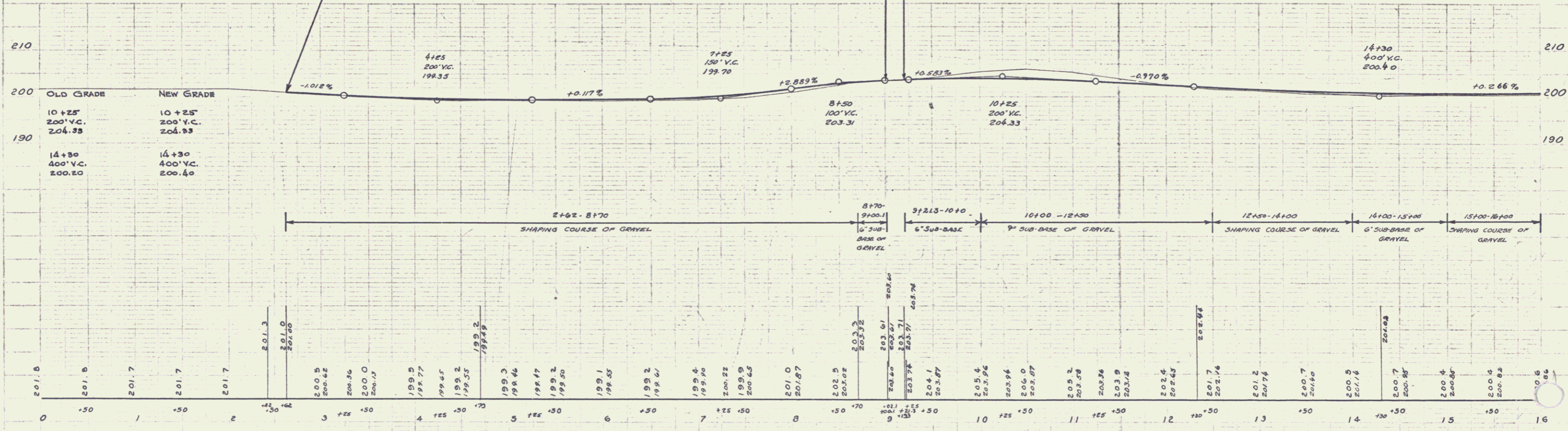
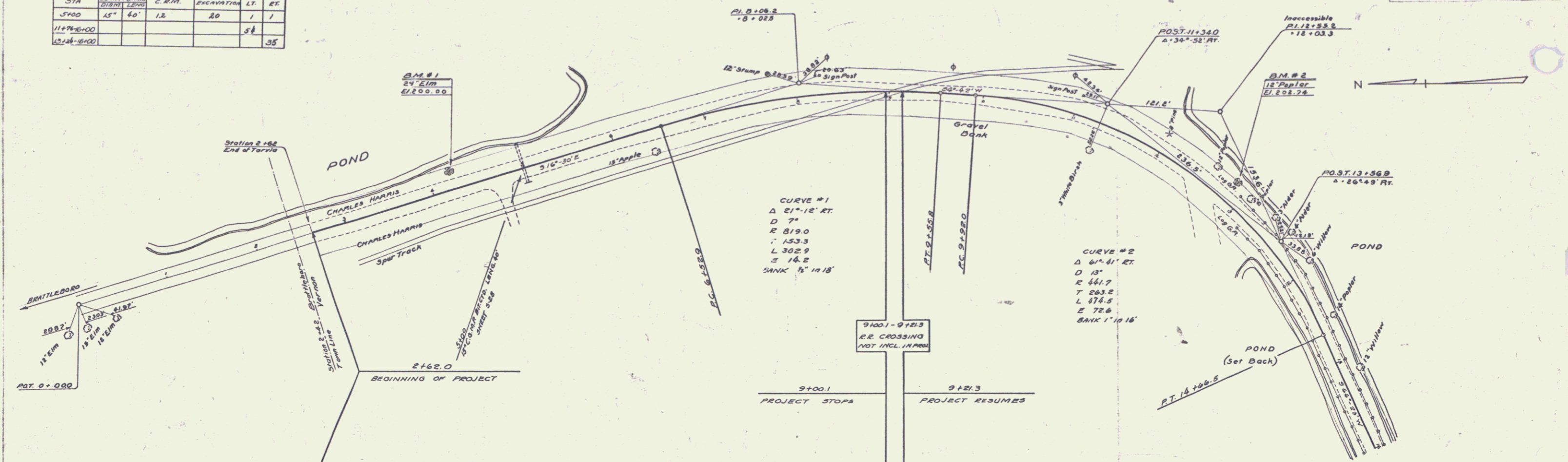


| CULVERT QUANTITIES | | | | |
|--------------------|---------------|---------|------------|--------------|
| STA | CULVERT WIDTH | C. REM. | EXCAVATION | GRADE ADJUST |
| | DIAM. | | LT. | ET. |
| 3+00 | 15" | 40' | 1.3 | 20 |
| 11+78-1400 | | | | 58 |
| 12+84-1800 | | | | 35 |

N.R.S.
153 1933 4 54



B.M. #1 Spike in Foot of 24' Elm 16' Lt. Sta 4+21 Elev 200.00
 B.M. #2 Spike in Foot of 15' Poplar 20' Lt. Sta. 12+82 Elev 202.74

SERIES N.R.S. NO. 153
 SHEET 4 OF 54