

INDEX OF SHEETS

SHEET NO. 1	TITLE PAGE
" 2	TYPICAL CROSS-SECTION OF IMPROVEMENT 2% GRAVEL MIXED-IN-PLACE SURFACE WITH RETINED TAR ITEMS 210 & 211
" 3	BANKING AND WIDENING TABLES
" 4-10	PLAN AND PROFILE SHEETS
" 11	GENERAL LAYOUT
" 12	DETAILS OF ABUTMENTS
" 13	SUPERSTRUCTURE DETAILS
" 14	STANDARD STRUCTURE SHEET 520; PIPE CULVERTS
" 15	" " " 530; GRADUATED COBBLE GUTTER
" 16	" " " 531; BOUNDARY MARKERS
" 17	" " " 5011; BARRICADES, SIGNS & LIGHTS
" 18	DETAIL OF FALSEWORK
" 19-26	CROSS-SECTION SHEETS
" 27	TYPICAL STANDARD DETAILS FOR CENTRAL VERMONT RAILROAD STRUCTURES

Standard Structure Sheet 520 approved by the Chief Engineer on July 14, 1933.

Standard Structure Sheet 530 approved by the Chief Engineer on Aug. 15, 1933.

Standard Structure Sheet 531 approved by the Chief Engineer on July 25, 1934.

(To Be Returned To R.O.M. Division)
 TOWN OF VERNON
 PERPETUAL
 TOWN FILE
 HIGHWAY DIVISION

STATE OF VERMONT
 STATE HIGHWAY DEPARTMENT

PLAN AND PROFILE OF PROPOSED
 STATE HIGHWAY

U.S. WORKS PROGRAM GRADE SECONDARY PROJECT (W.P.G.S. 153B)

TOWN OF VERNON

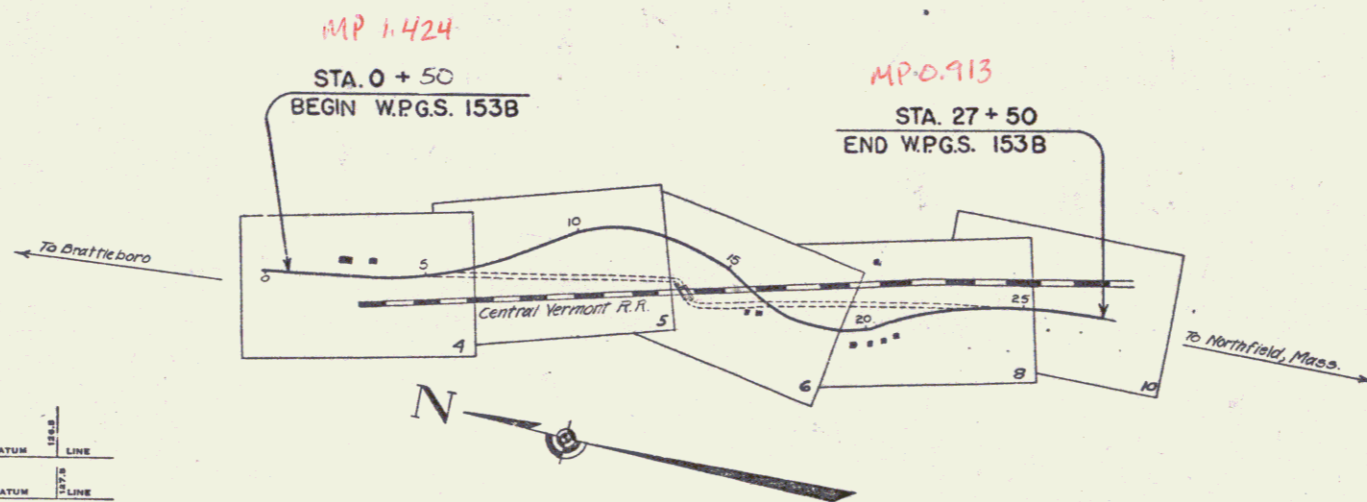
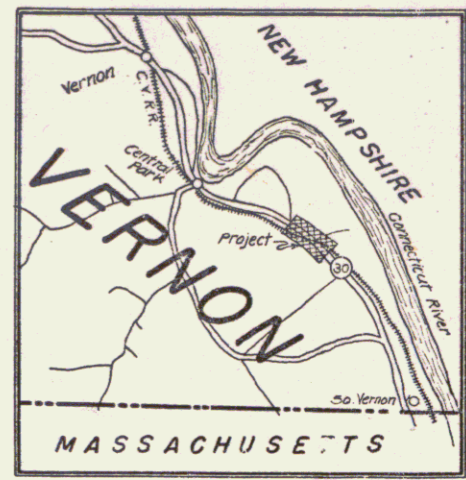
NORTHFIELD, MASS-BRATTLEBORO, VT. ROAD

UNDERPASS ON ROUTE 30 Pin# 99R628

BEGINNING AT A POINT ¹⁵⁰140 ± FT. NORTH OF THE RESIDENCE OF F. M. ALLEN, AND EXTENDING SOUTHERLY 0.509 MILES. 0.5114

LENGTH OF PROJECT 2690.3 FT. = 0.509 MILES
 2700.3 0.5114

FED. ROAD DIST. NO.	STATE	W.P.G.S. PROJ. NO.	FISCAL YEAR	SHEET NO.	TOTAL SHEETS
9	Vt.	153B	1934	1	26



RECORD PLANS
 MARCH 4, 1937
 EJB - R.F.T.

Rte VT 142

CONVENTIONAL SIGNS

- COUNTY LINE
- TOWN LINE
- FENCE LINE
- STONE WALL
- UNFENCED PROPERTY
- GUARD RAIL
- TRAVELED WAY
- RAILROAD
- RETAINING WALL
- CENTER LINE
- SURVEY LINE
- CULVERT
- DROP INLET
- TROLLEY POLE
- POWER POLE
- TELEPHONE POLE
- TREES
- HEDGE

- GROUND ELEVATION DATUM LINE
- GRADE ELEVATION DATUM LINE

- CURVE DATA**
- DEFLECTION ANGLE
 - DEGREE OF CURVE
 - RADIUS OF CURVE
 - TANGENT DISTANCE
 - LENGTH OF CURVE
 - EXTERNAL DISTANCE
 - POINT OF INTERSECTION
 - POINT OF CURVE
 - POINT OF TANGENT
 - POINT ON TANGENT

SCALES

TITLE	1" = 300'
TYPICAL	1" = 2'
PLAN	1" = 20'
PROFILE	1" = 5'
CROSS-SECTIONS	1" = 5'

These plans are subject to such revisions as may be required by the Bureau of Public Roads and the Commissioner of Highways. Construction is to be carried on in accordance with the plans and Standard Road and Bridge Specifications of 1930, including all subsequent approved revisions, and such revised specifications and special provisions as are submitted with the plans.

EXAMINED & APPROVED
 Nov. 9, 1935
 Chief Engineer
 Central Vermont Railway, Inc.

APPROVED: November 12, 1935
 Commissioner of Highways
 SUBMITTED BY ORDER OF THE STATE HIGHWAY BOARD

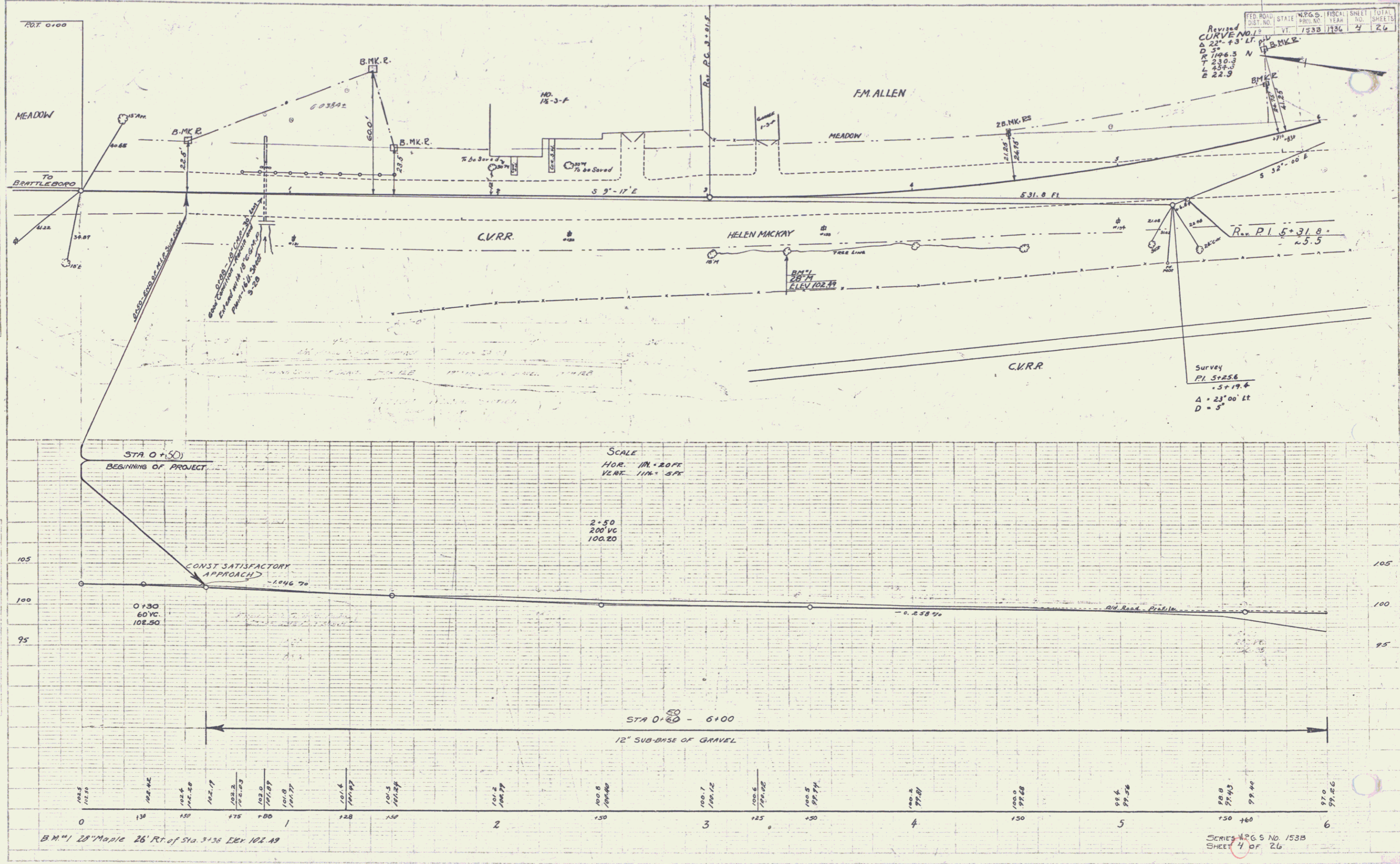
RECOMMENDED
 DISTRICT ENGINEER
 BUREAU OF PUBLIC ROADS
 RECOMMENDED FOR APPROVAL
 CHIEF ENGINEER
 BUREAU OF PUBLIC ROADS
 APPROVED
 DIRECTOR, BUREAU OF PUBLIC ROADS

CORRECT: _____
 Bridge Engineer
 SERIES W.P.G.S. NO. 153B FILED
 SHEET 1 OF 26

2/23/2000
 Checked: J. Leino

142

142



REVISIONS
 CURVE NO. 1
 Δ 22° - 13' LT.
 R 146.3
 T 230.3
 L 258.5
 E 22.9

Survey
 P.I. 5+25.6
 .5+19.4
 Δ = 23° 00' Lt
 D = 5'

SCALE
 HOR. 1" = 20' FT
 VERT. 1" = 5' FT

2+50
 200' VC
 100.20

STA 0+50 - 6+00
 12" SUB-BASE OF GRAVEL

PLAN
 DATE
 DRAWN BY
 CHECKED BY
 APPROVED BY

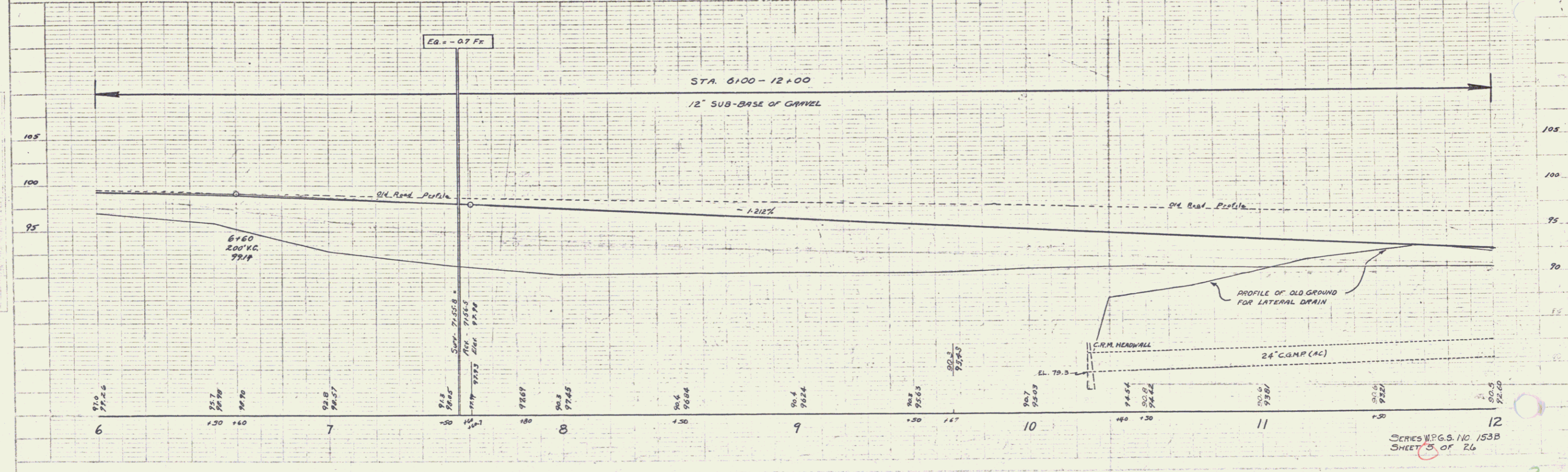
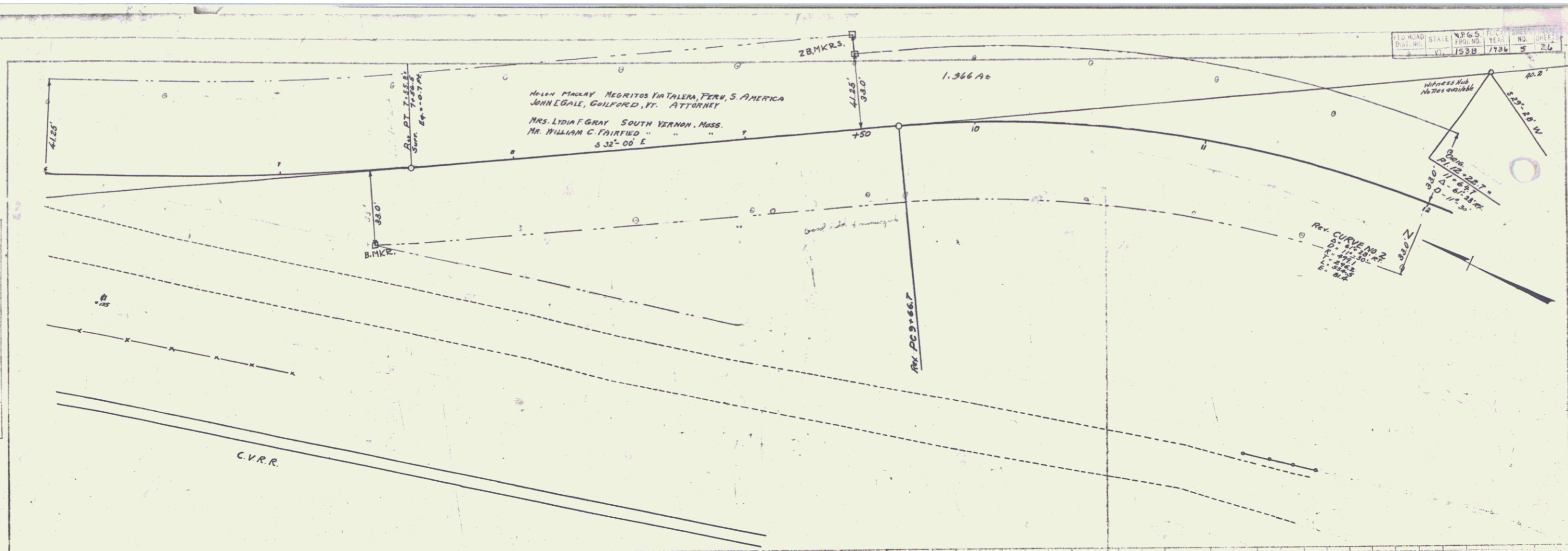
PROFILE
 DATE
 DRAWN BY
 CHECKED BY
 APPROVED BY

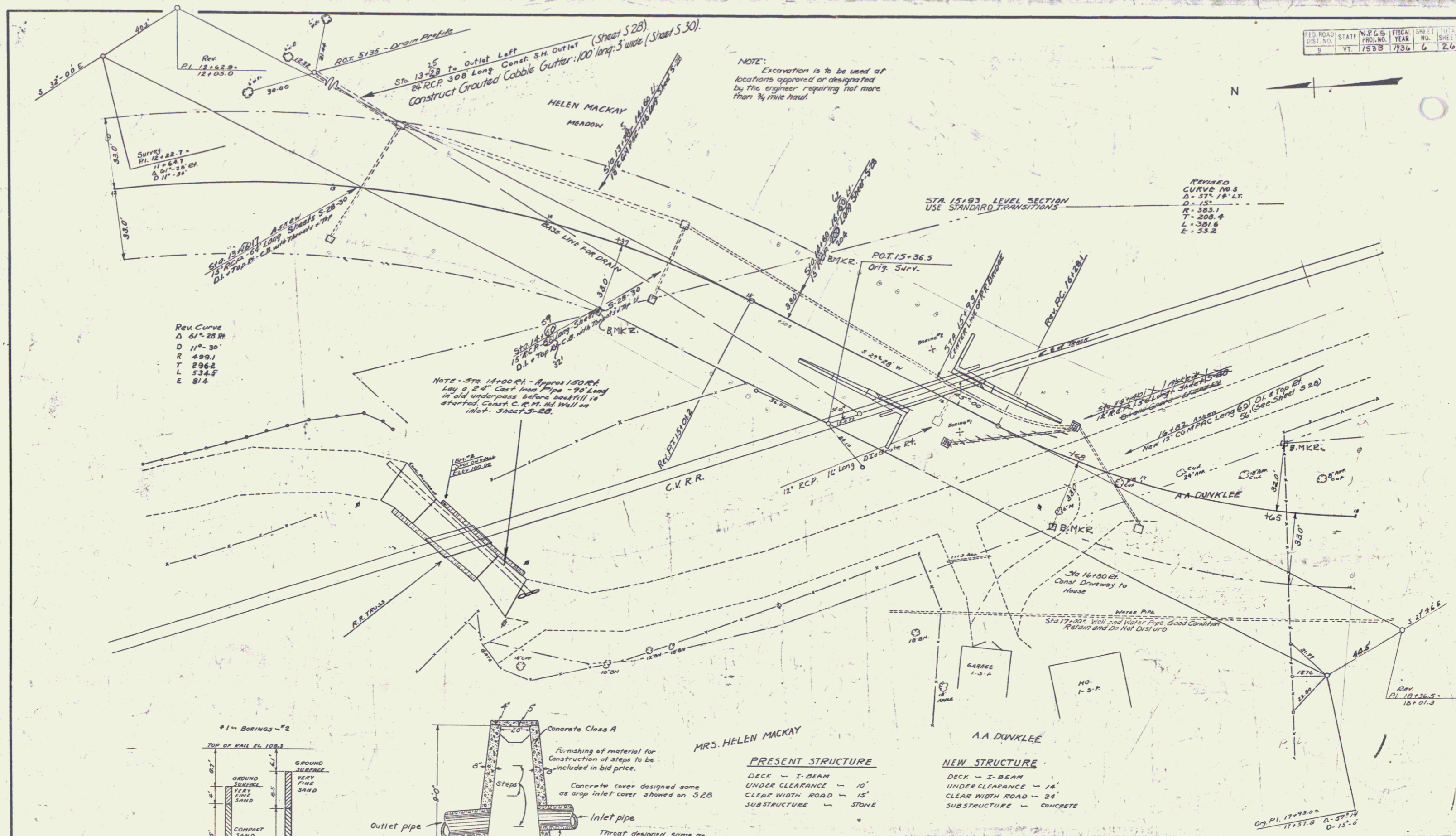
B.M. 11 28' Maple 26' Rt of Sta. 3+36 ELEV 102.49

SERIES NO. 153B SHEET 4 OF 26

PLAN
 DATE 10/1/1914
 DRAWN BY J. W. HARRIS
 CHECKED BY J. W. HARRIS
 REVISIONS

PROFILE
 DATE 10/1/1914
 DRAWN BY J. W. HARRIS
 CHECKED BY J. W. HARRIS
 REVISIONS



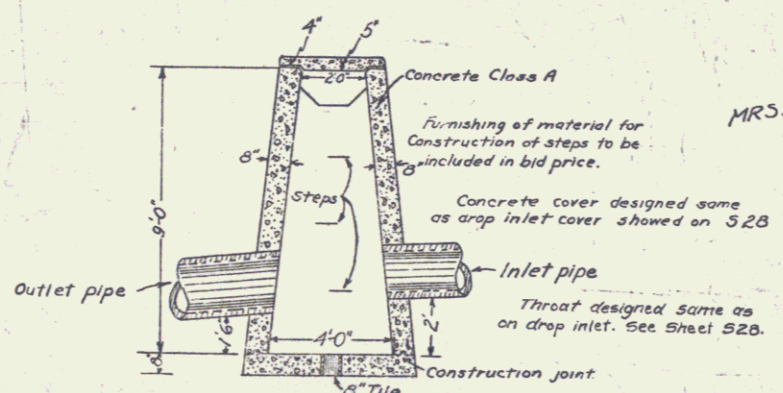
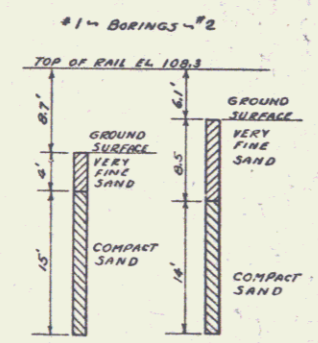


NOTE: Excavation is to be used at locations approved or designated by the engineer requiring not more than 3/4 mile haul.

REVISED CURVE NO. 2
 Δ - 57° 18' 47"
 D - 152'
 R - 383.1
 T - 208.4
 L - 381.6
 E - 53.2

REV. CURVE
 Δ 61° 28' 30"
 D 110' 30"
 R 499.1
 T 296.2
 L 534.7
 E 91.4

NOTE - STA. 14+00 ET. APPROX. 150' ET. Lay a 24" Cast Iron Pipe - 90' Long in old underground before installation started. Const. C.R.M. Wall in inlet. Sheet 5-28.

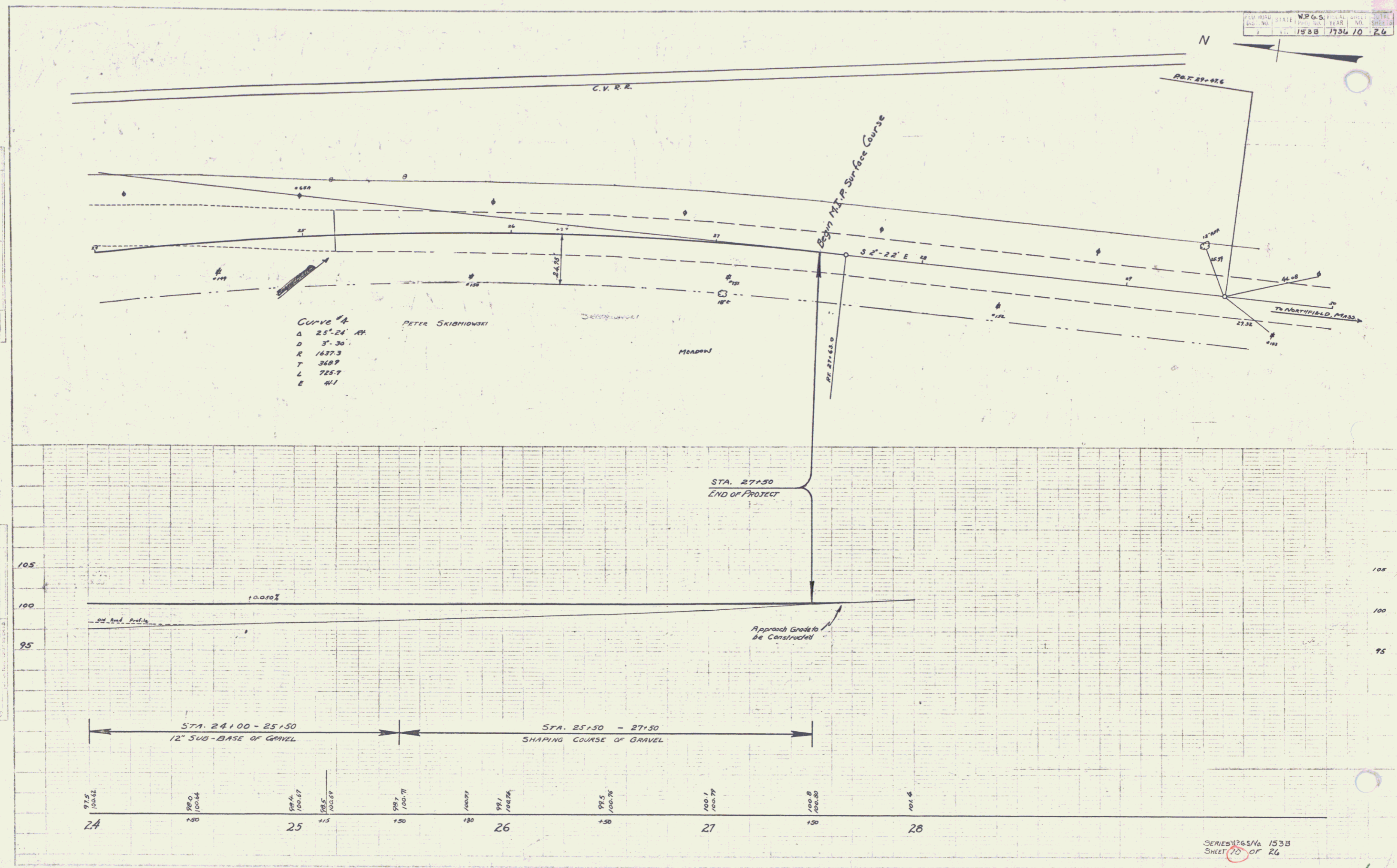


CONCRETE CATCH BASIN
 ITEM 76B
 STA. 13+16 LT. & 14+60 LT.

MRS. HELEN MACKAY
 A.A. DUNKLEE

PRESENT STRUCTURE	NEW STRUCTURE
DECK - I-BEAM	DECK - I-BEAM
UNDER CLEARANCE - 10'	UNDER CLEARANCE - 14'
CLEAR WIDTH ROAD - 15'	CLEAR WIDTH ROAD - 24'
SUBSTRUCTURE - STONE	SUBSTRUCTURE - CONCRETE

Surveyed by
 Designed by
 Drawn by
 Traced by
 Checked by
 Series N.P.G. No. 153-05
 Sheet 6 of 26 Sheets



Curve A
 Δ 25°-24' 44"
 D 3°-30'
 R 1437.3
 T 348.9
 L 725.7
 E 41.1

PETER SKIBIOWSKI

MEADOW

STA. 27+50
 END OF PROJECT

Approach Grade to be Constructed

STA. 24+00 - 25+50
 12" SUB-BASE OF GRAVEL

STA. 25+50 - 27+50
 SHAPING COURSE OF GRAVEL

97.5
 100.0
 102.5
 105.0
 107.5
 110.0
 112.5
 115.0
 117.5
 120.0
 122.5
 125.0
 127.5
 130.0
 132.5
 135.0
 137.5
 140.0
 142.5
 145.0
 147.5
 150.0
 152.5
 155.0
 157.5
 160.0
 162.5
 165.0
 167.5
 170.0
 172.5
 175.0
 177.5
 180.0
 182.5
 185.0
 187.5
 190.0
 192.5
 195.0
 197.5
 200.0
 202.5
 205.0
 207.5
 210.0
 212.5
 215.0
 217.5
 220.0
 222.5
 225.0
 227.5
 230.0
 232.5
 235.0
 237.5
 240.0
 242.5
 245.0
 247.5
 250.0
 252.5
 255.0
 257.5
 260.0
 262.5
 265.0
 267.5
 270.0
 272.5
 275.0
 277.5
 280.0
 282.5
 285.0
 287.5
 290.0
 292.5
 295.0
 297.5
 300.0
 302.5
 305.0
 307.5
 310.0
 312.5
 315.0
 317.5
 320.0
 322.5
 325.0
 327.5
 330.0
 332.5
 335.0
 337.5
 340.0
 342.5
 345.0
 347.5
 350.0
 352.5
 355.0
 357.5
 360.0
 362.5
 365.0
 367.5
 370.0
 372.5
 375.0
 377.5
 380.0
 382.5
 385.0
 387.5
 390.0
 392.5
 395.0
 397.5
 400.0
 402.5
 405.0
 407.5
 410.0
 412.5
 415.0
 417.5
 420.0
 422.5
 425.0
 427.5
 430.0
 432.5
 435.0
 437.5
 440.0
 442.5
 445.0
 447.5
 450.0
 452.5
 455.0
 457.5
 460.0
 462.5
 465.0
 467.5
 470.0
 472.5
 475.0
 477.5
 480.0
 482.5
 485.0
 487.5
 490.0
 492.5
 495.0
 497.5
 500.0
 502.5
 505.0
 507.5
 510.0
 512.5
 515.0
 517.5
 520.0
 522.5
 525.0
 527.5
 530.0
 532.5
 535.0
 537.5
 540.0
 542.5
 545.0
 547.5
 550.0
 552.5
 555.0
 557.5
 560.0
 562.5
 565.0
 567.5
 570.0
 572.5
 575.0
 577.5
 580.0
 582.5
 585.0
 587.5
 590.0
 592.5
 595.0
 597.5
 600.0
 602.5
 605.0
 607.5
 610.0
 612.5
 615.0
 617.5
 620.0
 622.5
 625.0
 627.5
 630.0
 632.5
 635.0
 637.5
 640.0
 642.5
 645.0
 647.5
 650.0
 652.5
 655.0
 657.5
 660.0
 662.5
 665.0
 667.5
 670.0
 672.5
 675.0
 677.5
 680.0
 682.5
 685.0
 687.5
 690.0
 692.5
 695.0
 697.5
 700.0
 702.5
 705.0
 707.5
 710.0
 712.5
 715.0
 717.5
 720.0
 722.5
 725.0
 727.5
 730.0
 732.5
 735.0
 737.5
 740.0
 742.5
 745.0
 747.5
 750.0
 752.5
 755.0
 757.5
 760.0
 762.5
 765.0
 767.5
 770.0
 772.5
 775.0
 777.5
 780.0
 782.5
 785.0
 787.5
 790.0
 792.5
 795.0
 797.5
 800.0
 802.5
 805.0
 807.5
 810.0
 812.5
 815.0
 817.5
 820.0
 822.5
 825.0
 827.5
 830.0
 832.5
 835.0
 837.5
 840.0
 842.5
 845.0
 847.5
 850.0
 852.5
 855.0
 857.5
 860.0
 862.5
 865.0
 867.5
 870.0
 872.5
 875.0
 877.5
 880.0
 882.5
 885.0
 887.5
 890.0
 892.5
 895.0
 897.5
 900.0
 902.5
 905.0
 907.5
 910.0
 912.5
 915.0
 917.5
 920.0
 922.5
 925.0
 927.5
 930.0
 932.5
 935.0
 937.5
 940.0
 942.5
 945.0
 947.5
 950.0
 952.5
 955.0
 957.5
 960.0
 962.5
 965.0
 967.5
 970.0
 972.5
 975.0
 977.5
 980.0
 982.5
 985.0
 987.5
 990.0
 992.5
 995.0
 997.5
 1000.0