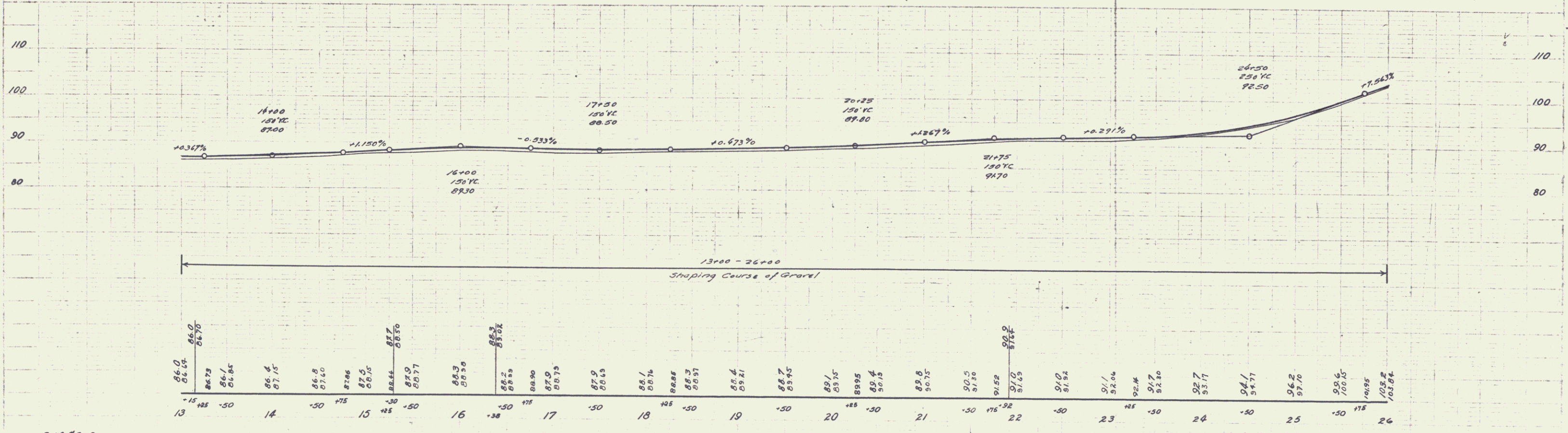
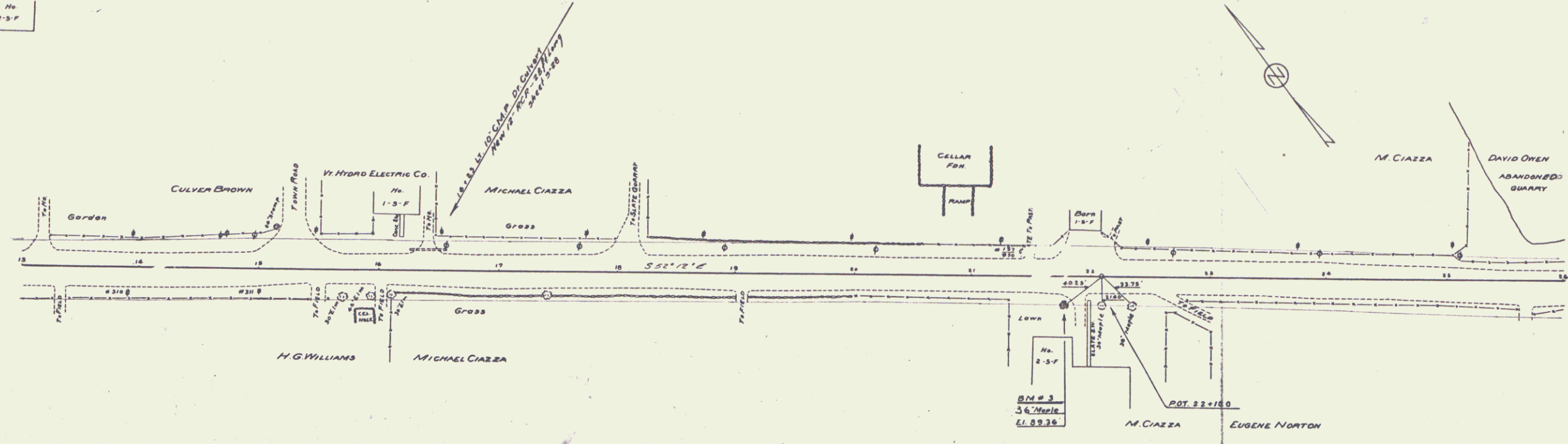


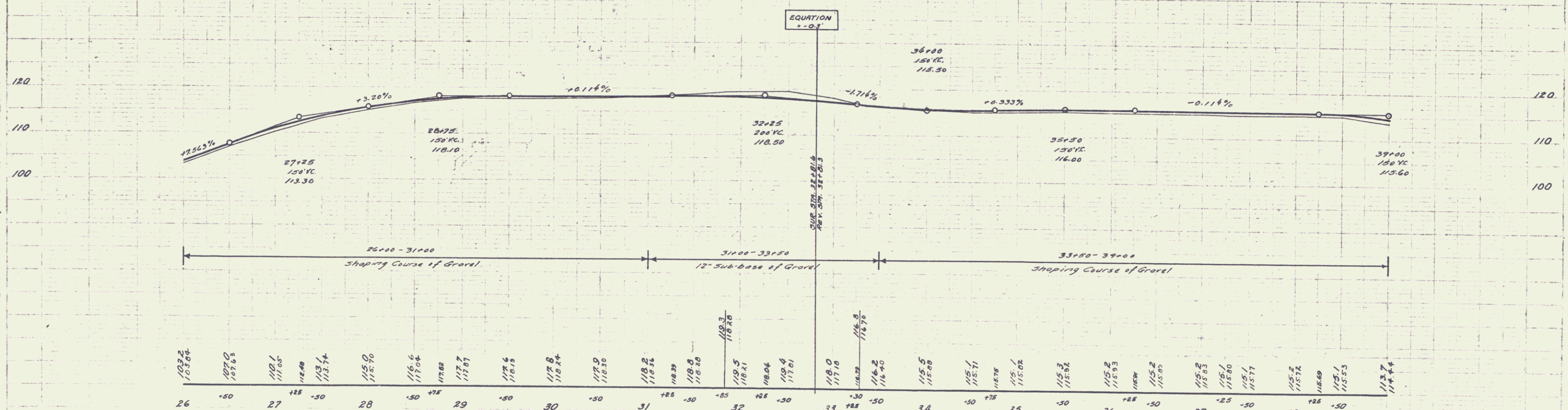
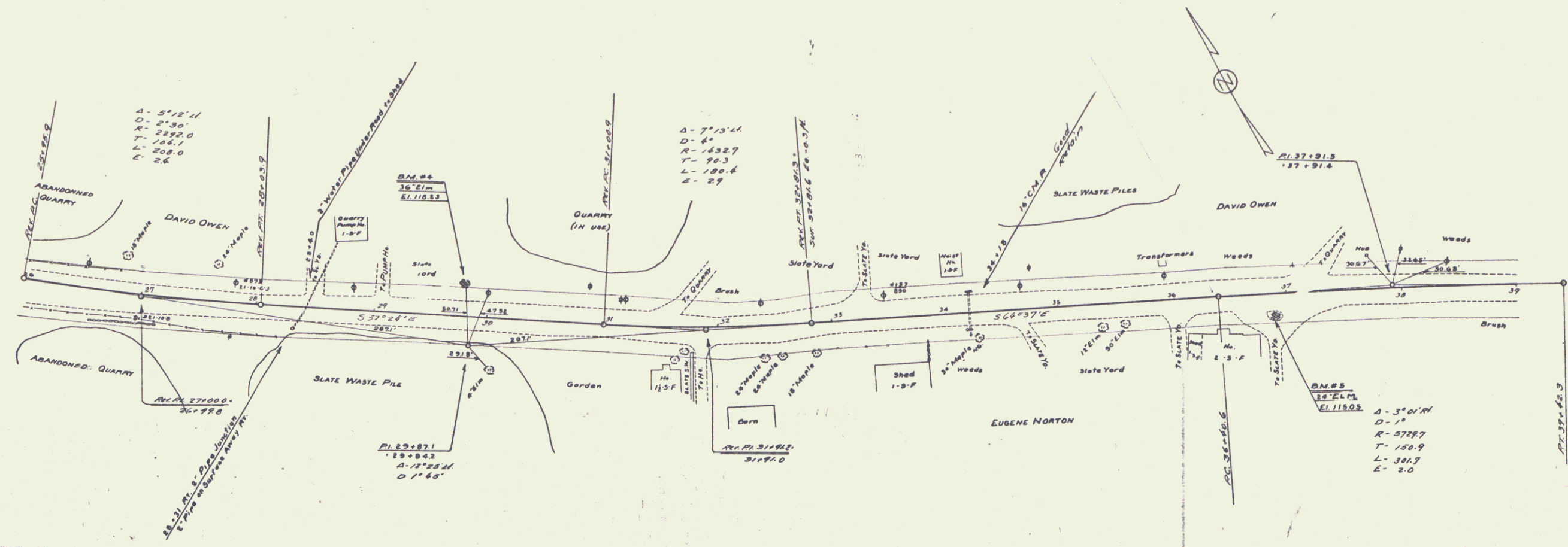
No. 2-3-F

PROPERTY OF
 H. G. WILLIAMS
 1933

PROPERTY OF
 EUGENE NORTON
 1933

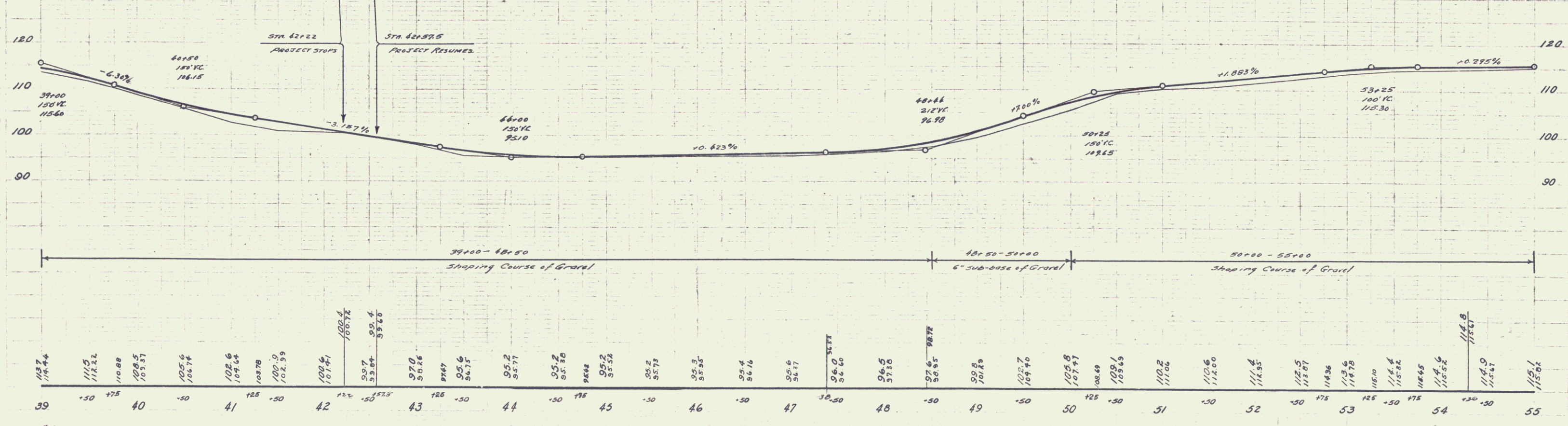
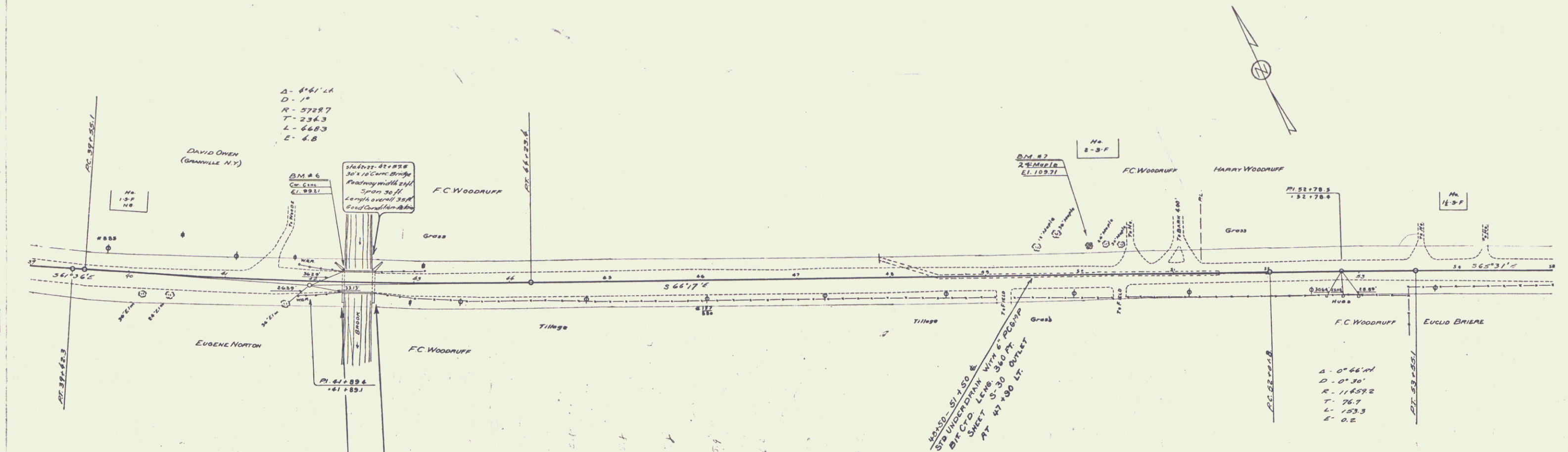


B.M. "3 SPIKE IN ROOT OF 36" MAPLE 21' RT OF STR. 2175 ELEV. 89.36

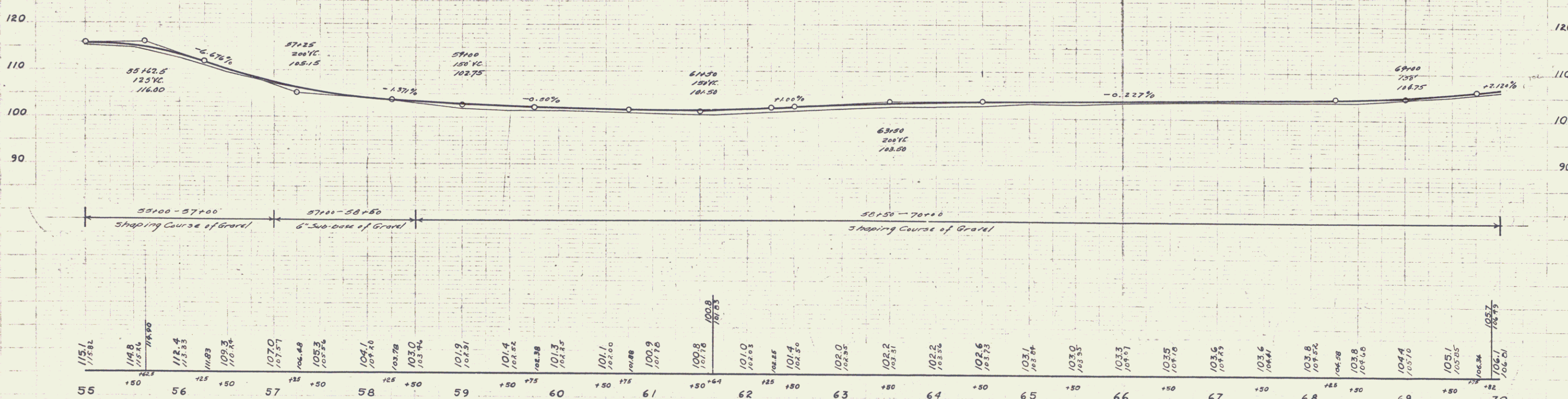
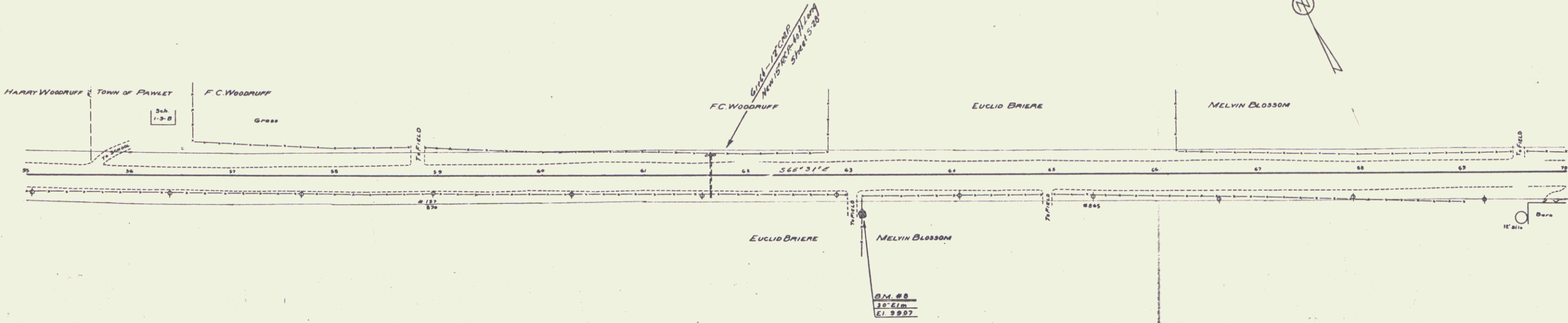


B.M. #4 SPIKE IN ROOT OF 36" ELM 31' LT. OF STA. 29+78 ELEV 118.23
B.M. #5 " " " " 24' " 18' RT. " " 36+86 " 115.05

4



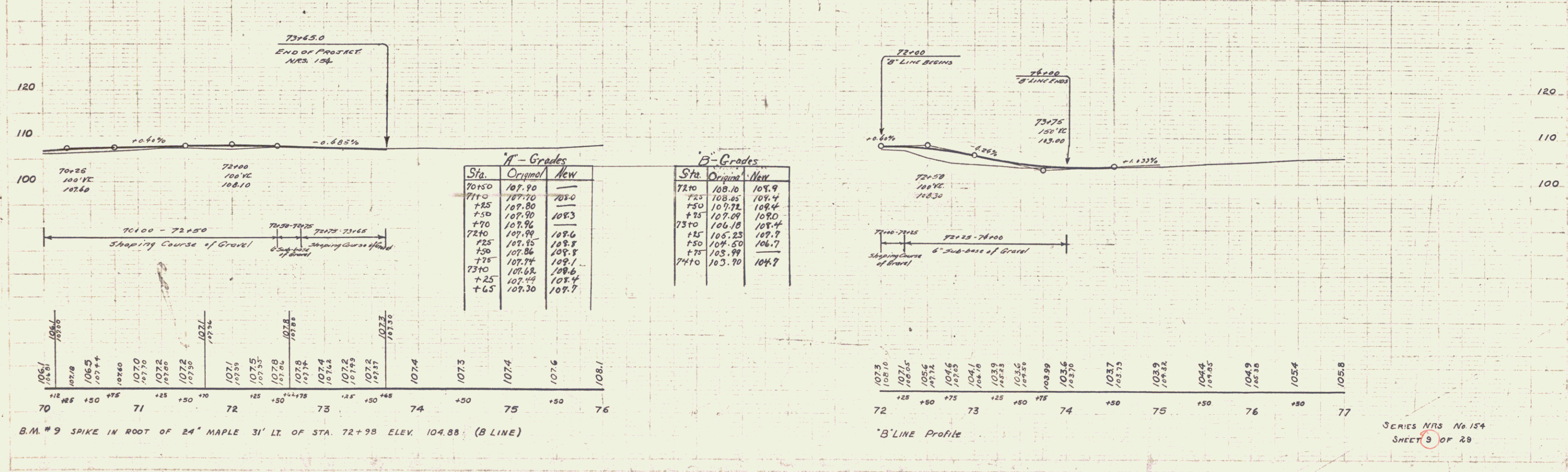
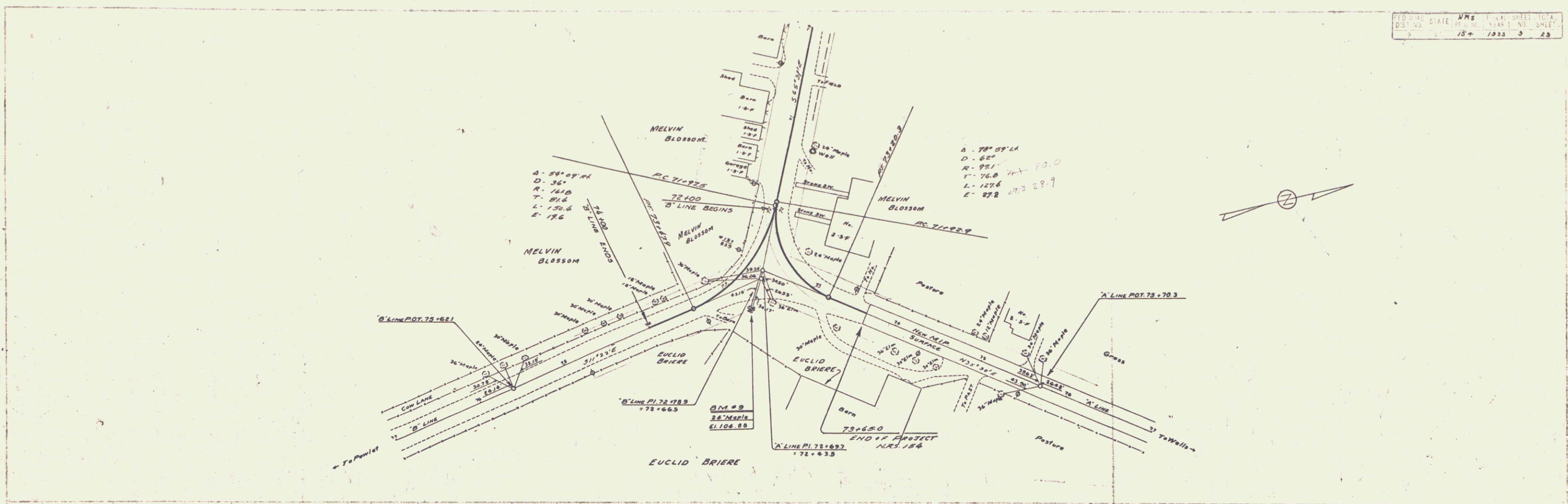
B.M. #6 SPOT ON CONC. BRIDGE ABUT. 13' LT. OF STA. 42+23 ELEV. 99.21
 B.M. #7 SPIKE IN ROOT OF 24" MAPLE 28' LT. OF STA. 50+06 ELEV. 109.71



B.M. 8 SPIKE IN ROOT OF 30" LIM 36' RT. OF STA. 63+07 ELEV. 99.07

6

811003
 10/10/33
 ENGINEER
 10/10/33
 SUPERVISOR



B.M. # 9 SPIKE IN ROOT OF 24" MAPLE 31' LT. OF STA. 72+98 ELEV. 104.88 (B LINE)

7