

INDEX OF SHEETS

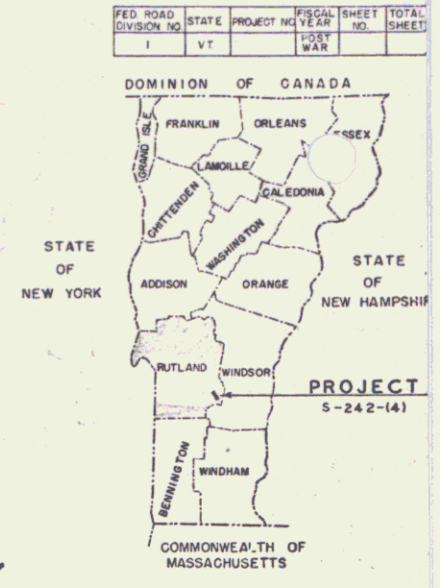
SHEET NO.	TITLE PAGE
1	TYPICAL CROSS-SECTION OF IMPROVEMENT
2	PARKING AND WIDENING BW NO.1
3	QUANTITY SHEET
4	ITEM AND DRAINAGE SHEETS
5	EARTHWORK SHEETS
6-9	CONSTRUCTION DETAILS RS-56-3 (MARKERS AND WOODSIDE POSTS)
10	CONSTRUCTION DETAILS RS-56-4 (DRAINAGE)
11	STANDARD STRUCTURE SHEET RS-56-10 (TWO CABLE BRD RAIL)
12	STANDARD STRUCTURE SHEET RS-56-12 (BARRICADES AND LIGHTS FOR ROADWAY)
13	STANDARD STRUCTURE SHEET RS-56-14 (PRECAST CONC. PIPE D.I.)
14	DETAIL SHEET FOR MULTI PLATE PIPE ARCH
15	SUPERSTRUCTURE WIDENING
16	ABUTMENT NO. 1 DETAILS
17	DETAILS OF WING NO. 1 AND NO. 2
18	REINFORCING STEEL SCHEDULE
19	STANDARD STRUCTURE SS-20-58 (CONSTRUCTION DETAILS FOR W.F. BEAM BRIDGES)
20	STANDARD STRUCTURE SS-56-2 (BARRICADES SIGN AND LIGHTS FOR BRIDGES)
21	CROSS SECTIONS
22	CHANNEL SECTIONS

STATE OF VERMONT
DEPARTMENT OF HIGHWAYS

PROPOSED IMPROVEMENT
FEDERAL-AID
SECONDARY-PROJECT

TOWN OF MOUNT HOLLY
COUNTY OF RUTLAND

VERMONT ROUTE 8
MOUNT HOLLY — WESTON ROAD



STANDARD STRUCTURE SHEET APPROVED BY THE CHIEF ENGINEER
OF VERMONT STATE DEPARTMENT OF HIGHWAYS
S-40 JUNE 10, 1950

PROJECT NAME & NUMBER	TYPE	PAVEMENT AREA
MOUNT HOLLY S-242(4)	DOUBLE TACK COAT OF REFINED TAR WITH PEA STONE SEAL	41,107 s.y.

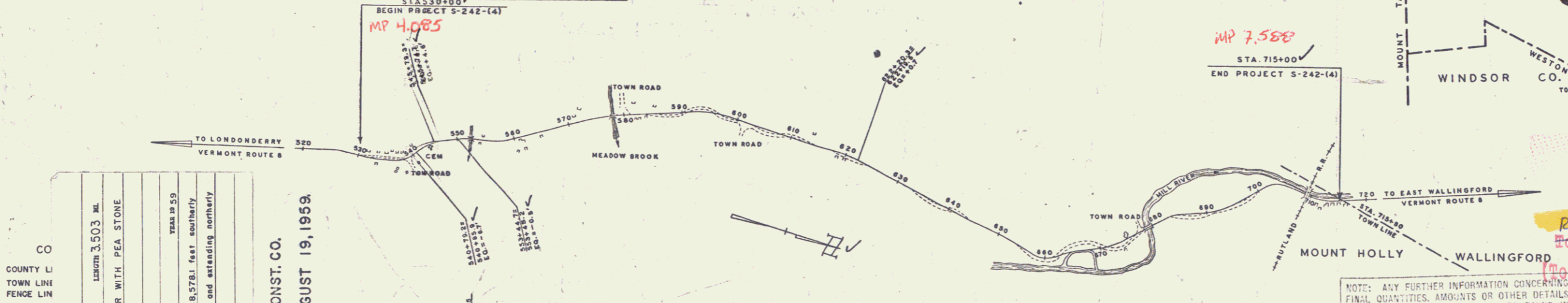
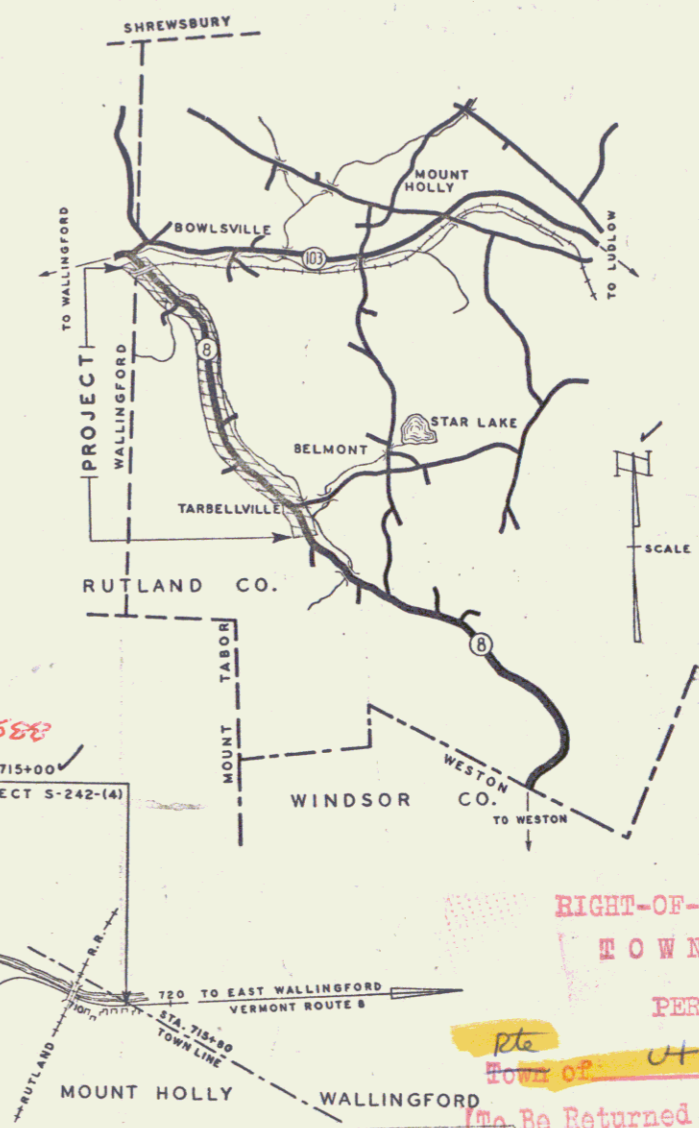
RECORD PLANS MATERIALS

SUB-BASE OF GRAVEL - COLE AND GARROW PITS - MOUNT HOLLY, VERMONT.
TRANSIT MIX CONCRETE - JOSEPH CARRARA - RUTLAND, VERMONT.
REINFORCING & STRUCTURAL STEEL - VERMONT STRUCTURAL STEEL CO. - BURLINGTON, VT.
REFINED TAR - THE BARRETT CO. - MAJEN, MASSACHUSETTS.
BITUMINOUS CONCRETE PAVEMENT - VERMONT PAVING CO. INC. - BURLINGTON, VT.
REINFORCED CONCRETE PIPE - VERMONT CONCRETE PIPE CO. - WINDSOR, VERMONT.
A.C.C.G. METAL PIPE - NEW ENGLAND METAL CULVERT CO. - WHITE RIVER JCT., VT.
VITRIFIED CLAY PIPE - RUTLAND FIRE CLAY CO. - RUTLAND, VERMONT.
CABLE GUARD RAIL - BETHLEHEM STEEL CO. - BOSTON, MASSACHUSETTS.
CONTRACTOR - S.V. ROSSI CONST. CO.
RESIDENT ENGINEER - HUGH ELDER
INSPECTOR - J.G. PHILBRICK
RECORD PLANS - W.H. DRATH

CONTRACT DATED - APRIL 4, 1958.
CONTRACT STARTED - MAY 5, 1958.
CONTRACT COMPLETED - AUGUST 19, 1959.
CONTRACT ACCEPTED - AUGUST 19, 1959.

BEGINNING AT A POINT APPROXIMATELY 3578.1 FEET SOUTHERLY FROM THE WALLINGFORD - MOUNT HOLLY TOWN LINE AND EXTENDING NORTHERLY 18,498.1 FEET.
LENGTH OF PROJECT - 18,498.1 FEET = 3.503 MILES

Pin# 99R619



CO
COUNTY LI
TOWN LINE
FENCE LINE
STONE WA
UNFENCED
GUARD RA
TRAVELED
RAILROAD
RESIDING
CENTER L
SURVEY L
CULVERT
DRAIN INLE
TR
POWER PC
TELEPHONE
TREES
HEDGE

PROJECT MOUNT HOLLY
NUMBER S-242(4)
TYPE DOUBLE TACK COAT OF REFINED TAR WITH PEA STONE SEAL
CONTRACTOR S.V. ROSSI CONST. CO.
TORRINGTON, CONN.
LOCATION Beginning at a point approximately 3578.1 feet southerly from the Wallingford - Mt. Holly town line and extending northerly 18,498.1 feet.

MOUNT HOLLY S-242(4)
CONTRACTOR - S.V. ROSSI CONST. CO.
RECORD PLANS - W.H. DRATH
CONTRACT COMPLETED - AUGUST 19, 1959.

RIGHT-OF-WAY DIVISION
TOWN FILE
PERPETUAL
Town of 4155
To Be Returned To R.O.W. Division

NOTE: ANY FURTHER INFORMATION CONCERNING FINAL QUANTITIES, AMOUNTS OR OTHER DETAILS RELATIVE TO THIS PROJECT MAY BE FOUND IN EITHER THE FIELD BOOKS OR THE ESTIMATE FILE.

THESE PLANS ARE SUBJECT TO SUCH REVISIONS AS MAY BE REQUIRED BY THE BUREAU OF PUBLIC ROADS OR THE COMMISSIONER OF HIGHWAYS.

CONSTRUCTION IS TO BE CARRIED ON IN ACCORDANCE WITH THE PLANS AND THE STANDARD ROAD AND BRIDGE SPECIFICATIONS OF 1948 AS APPROVED JULY 25, 1949 BY THE BUREAU OF PUBLIC ROADS, INCLUDING ALL SUBSEQUENT APPROVED REVISIONS AND SUCH REVISED SPECIFICATIONS AND SPECIAL PROVISIONS AS ARE SUBMITTED WITH THE PLANS.

DEPARTMENT OF COMMERCE
BUREAU OF PUBLIC ROADS

RECOMMENDED FOR APPROVAL
DISTRICT ENGINEER DATE

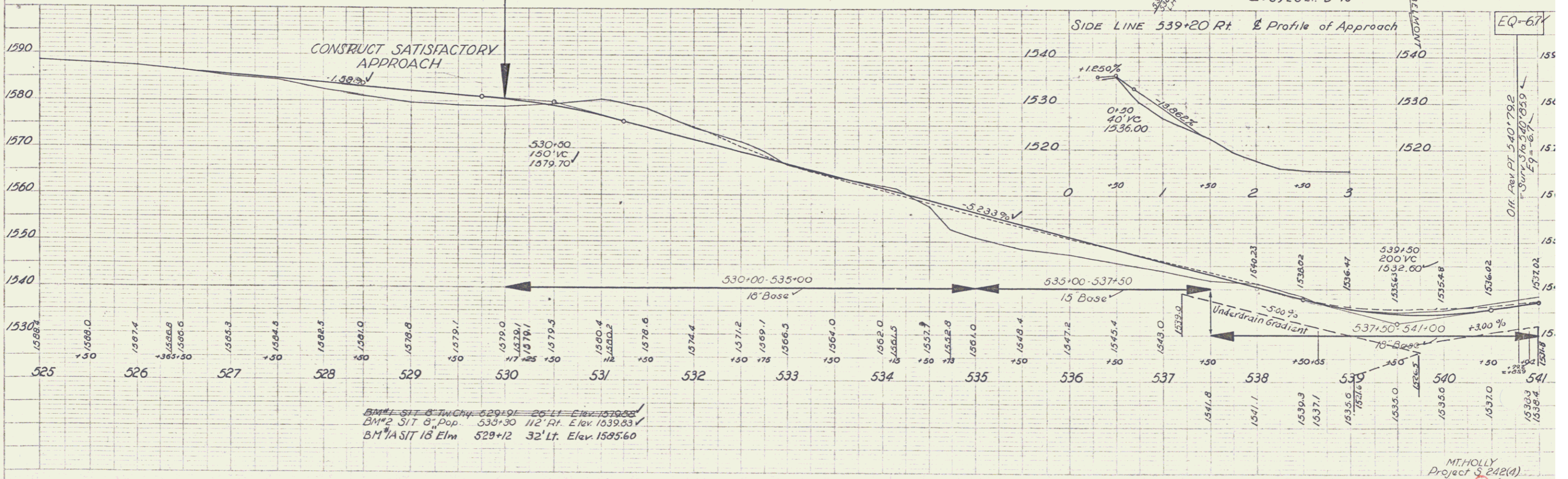
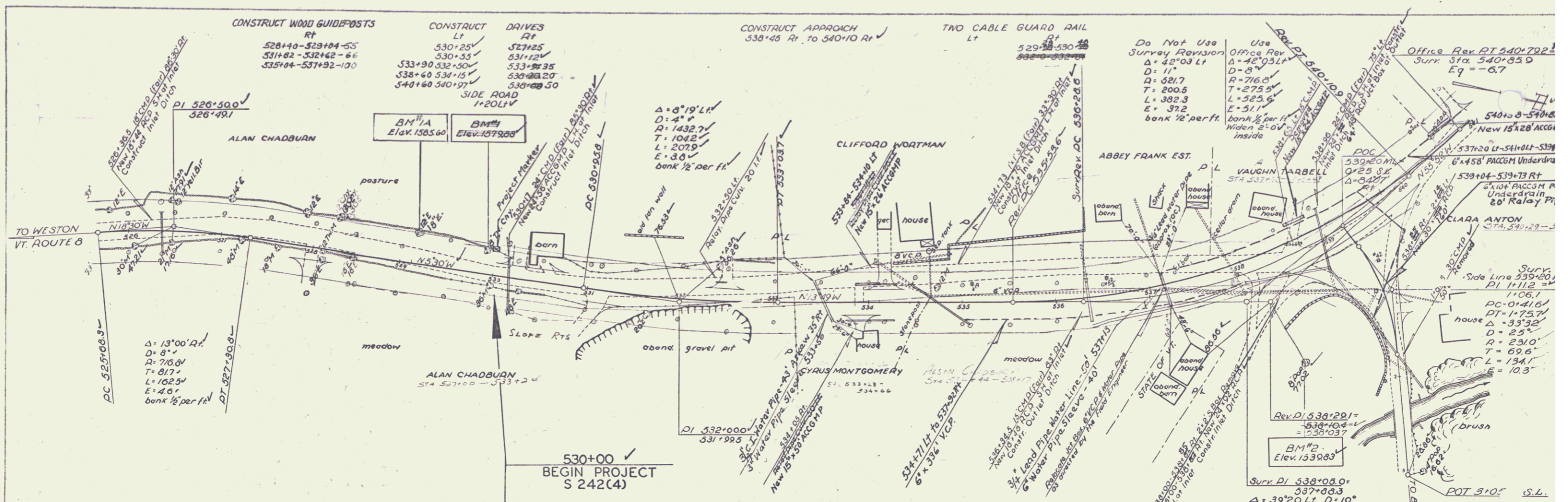
APPROVED
DIVISION ENGINEER DATE

PROJECT 5 NO. 242-141
SHEET 1 OF 97 SHEETS

APPROVED [Signature] DATE 10-31-57
APPROVED [Signature] DATE 10-31-57
APPROVED [Signature] DATE Nov. 7, 1957
APPROVED [Signature] DATE Oct. 1, 1957
APPROVED [Signature] DATE Oct. 31, 1957
APPROVED [Signature] DATE Oct. 31, 1957

PLAN
DATE: 1/15/57
BY: J.R.A.
CHECKED: J.R.A.

PROFILE
DATE: 1/15/57
BY: J.R.A.
CHECKED: J.R.A.

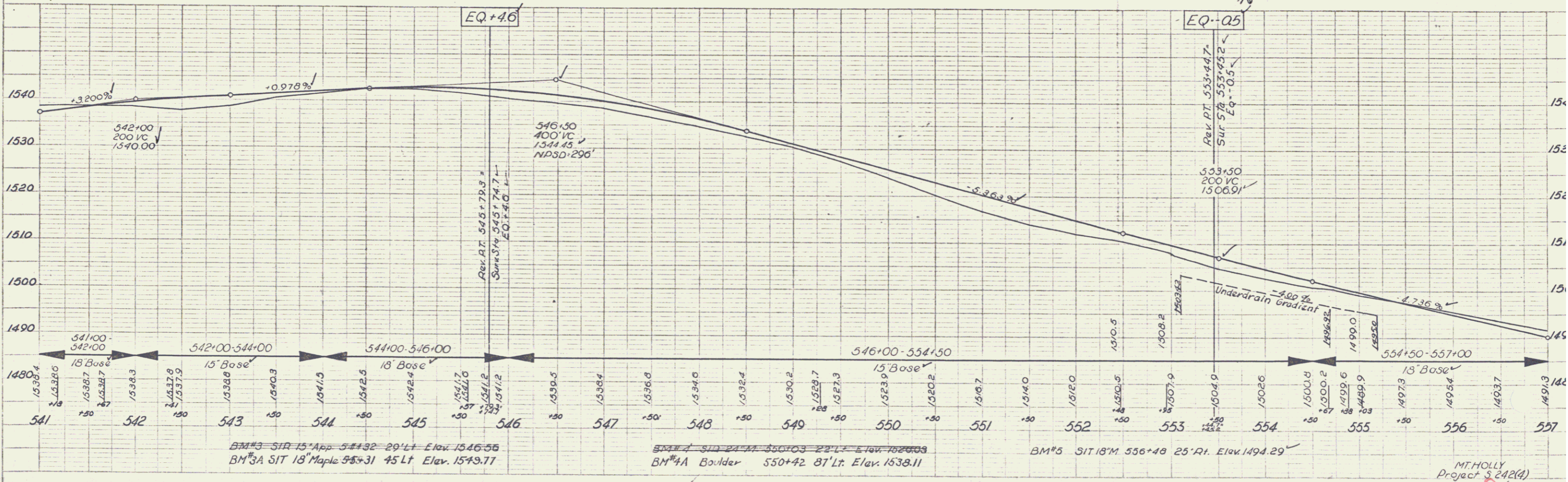
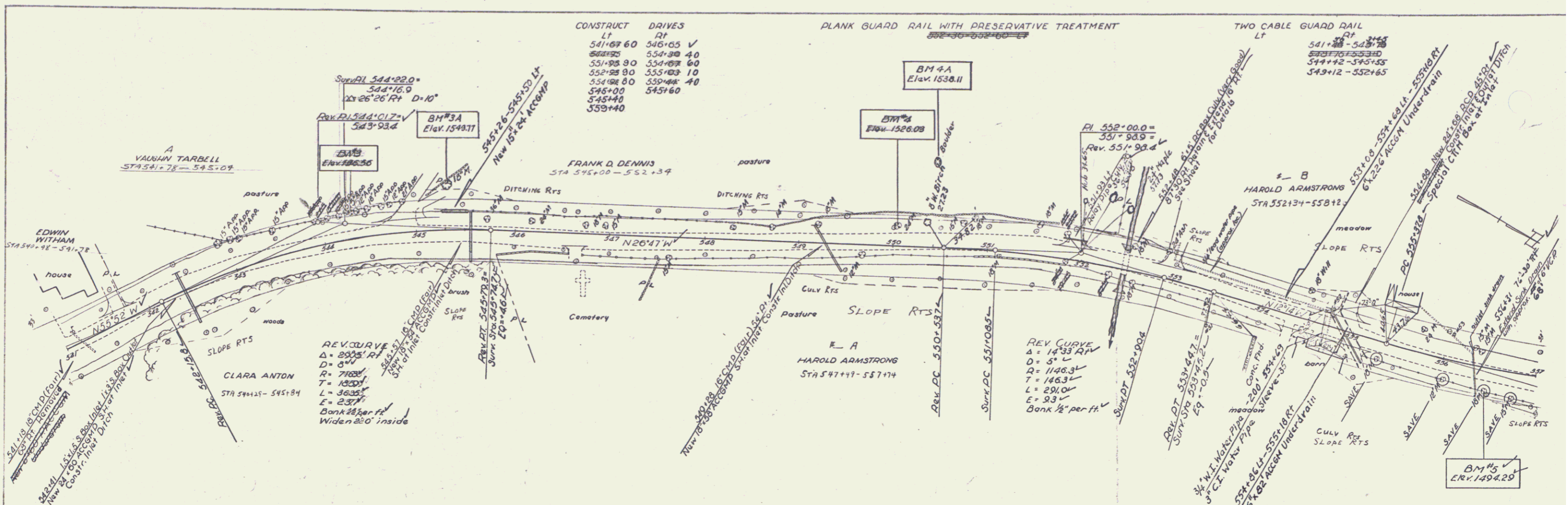


BM#1 SIT 8" IN CHY 529+01 25' Lt. Elev. 1570.52
 BM#2 SIT 8" Pop. 530+30 112' Rt. Elev. 1539.83
 BM#3 SIT 18" Elm 529+12 32' Lt. Elev. 1585.60

MTHOLLY
 Project S 242(4)
 Sheet 15 of 97

PLAN
 DATE
 DRAWN
 CHECKED

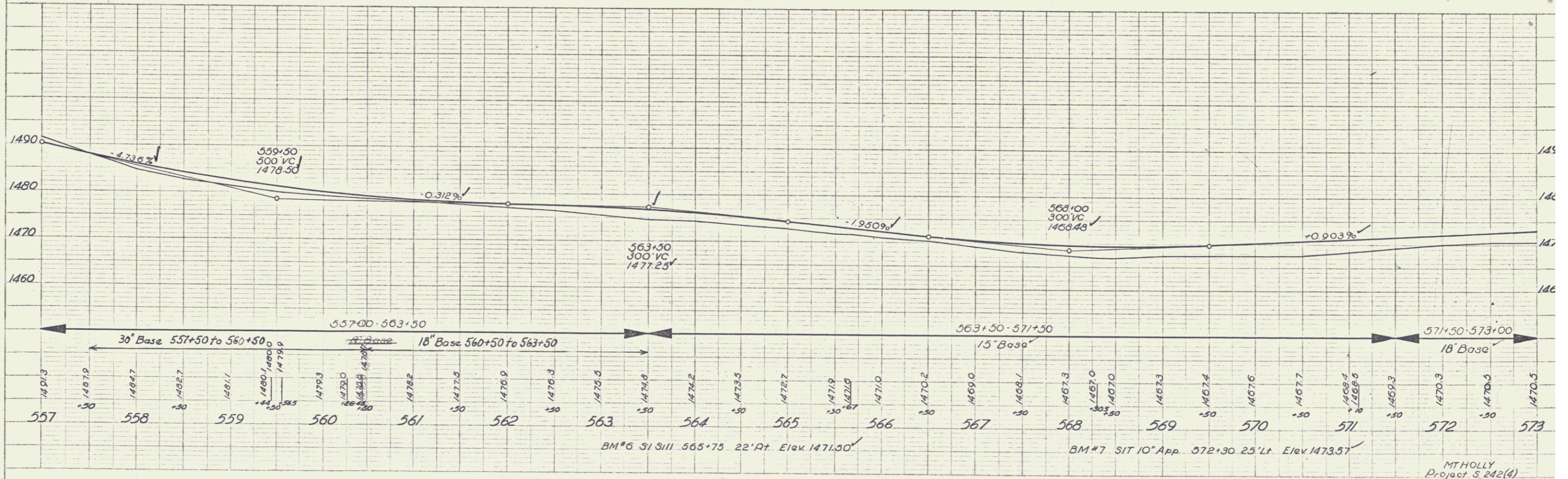
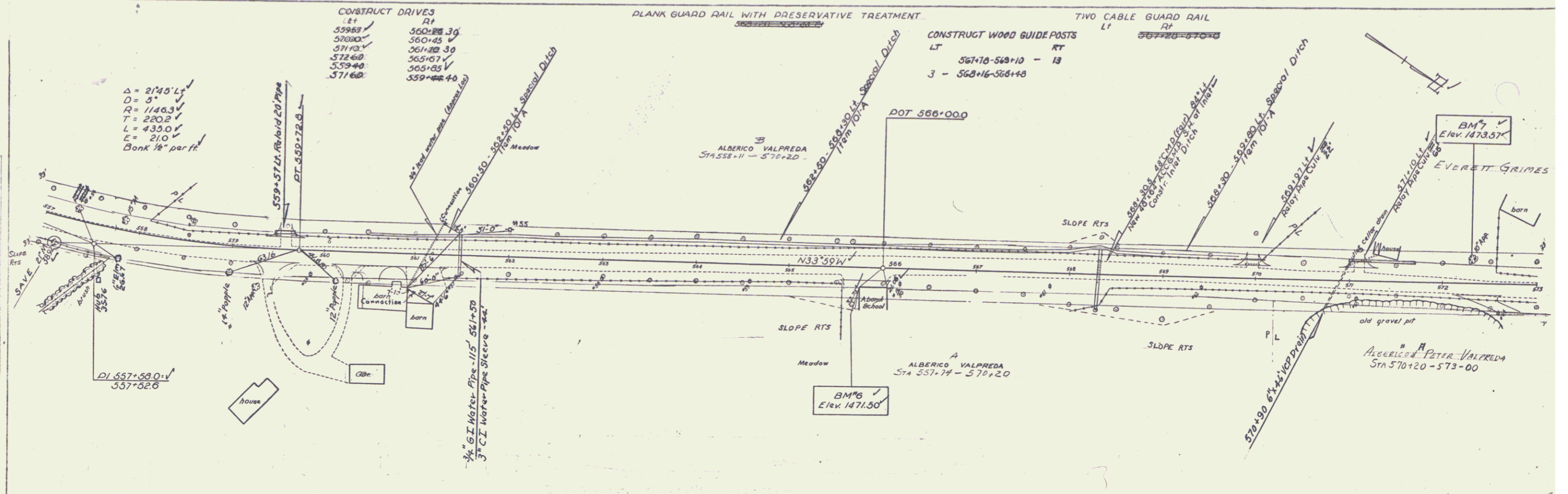
PROFILE
 DATE
 DRAWN
 CHECKED



BM#3 SIT 15' App 54+32 29' Lt Elev. 1546.56
 BM#3A SIT 18' Maple 54+31 45' Lt Elev. 1549.77
 BM#4 Boulder 550+42 87' Lt Elev. 1538.11
 BM#5 SIT 18' M 556+48 25' Rt Elev. 1494.29
 MTHOLLY
 Project 3242(A)
 Sheet 16 of 97

PLAN
 DATE: 10/15/03
 DRAWN BY: JLD
 CHECKED BY: JLD
 PROJECT: 242(4)
 SHEET: 27 OF 27

PROFILE
 DATE: 10/15/03
 DRAWN BY: JLD
 CHECKED BY: JLD
 PROJECT: 242(4)
 SHEET: 27 OF 27



CONSTRUCT WOOD GUARD RAIL

LT RT
574+0-577+52 22
13 574+93-576+85

RIP RAP FOR BANK PROTECTION

578+26
BM 8A
Elev. 1475.027

CONSTRUCT DRIVES

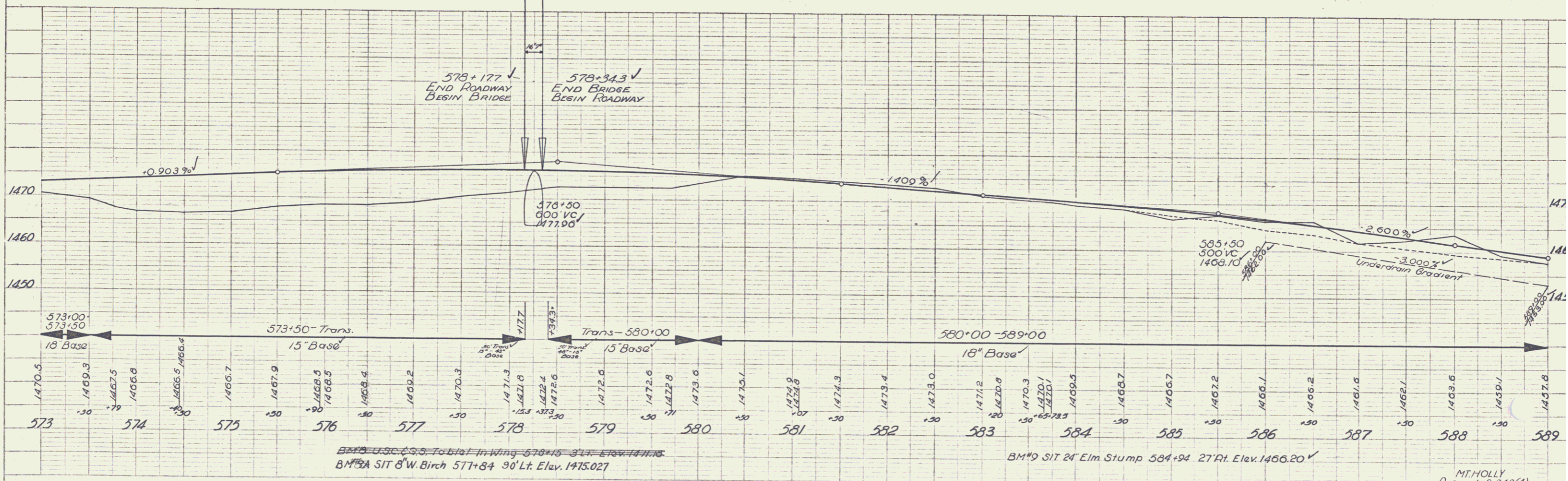
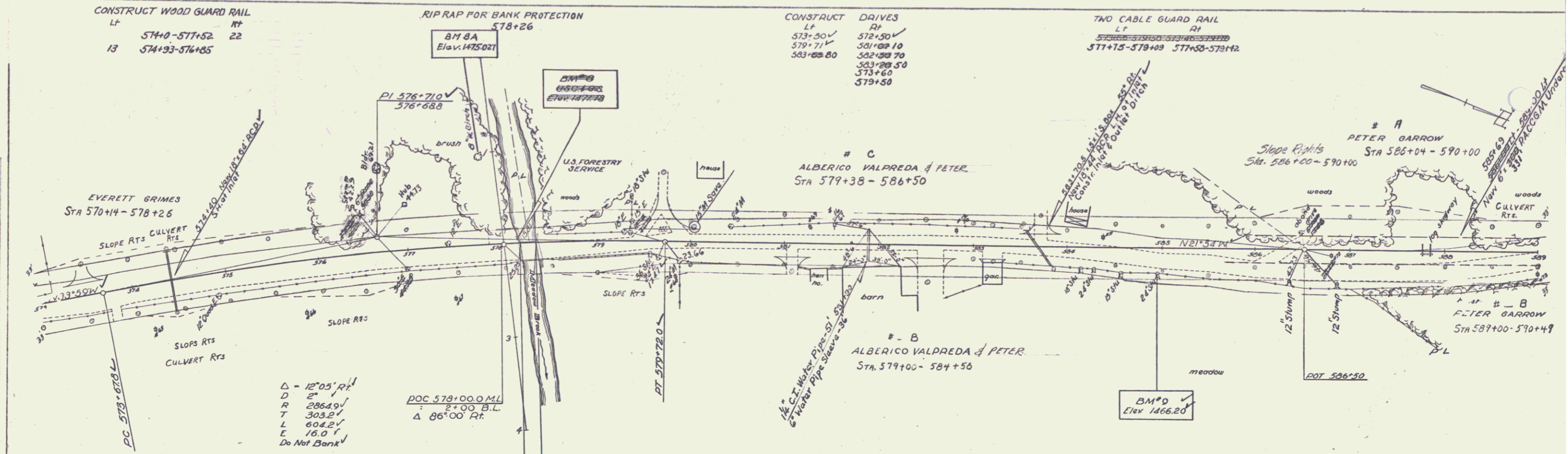
LT RT
573+50 578+50
579+71 581+00
583+00 580+70
583+00 583+00
579+50

TWO CABLE GUARD RAIL

LT RT
577+15-579+00 577+50-579+12

PLAN	DATE	BY
DATE	BY	BY
DATE	BY	BY
DATE	BY	BY

PROFILE	DATE	BY
DATE	BY	BY
DATE	BY	BY
DATE	BY	BY

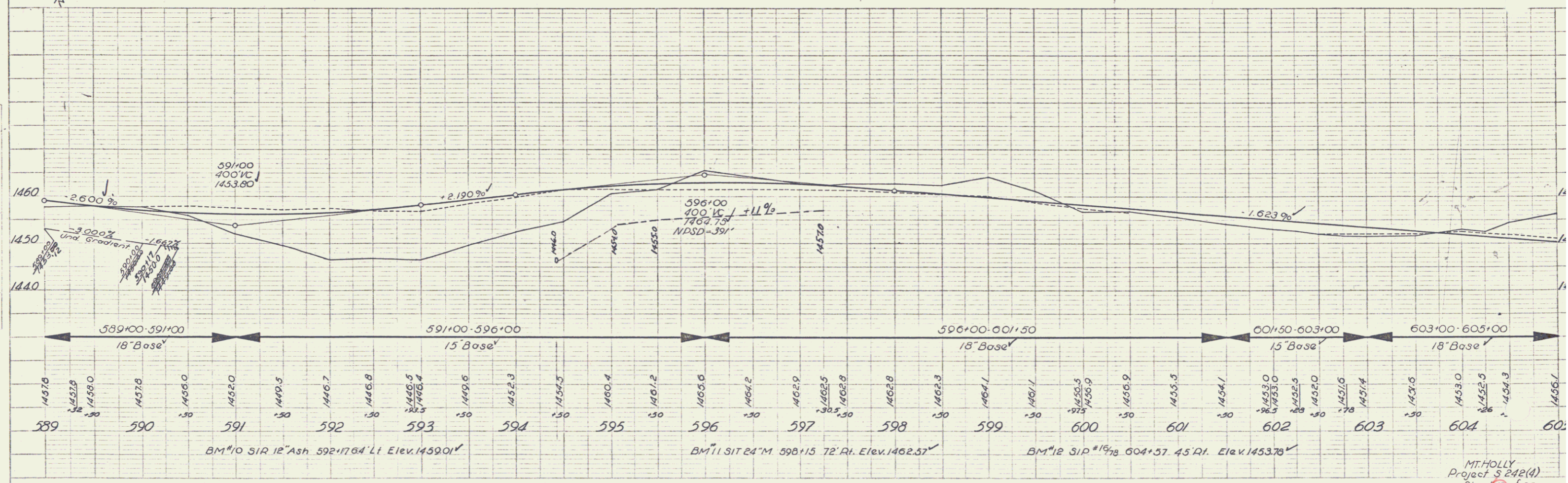
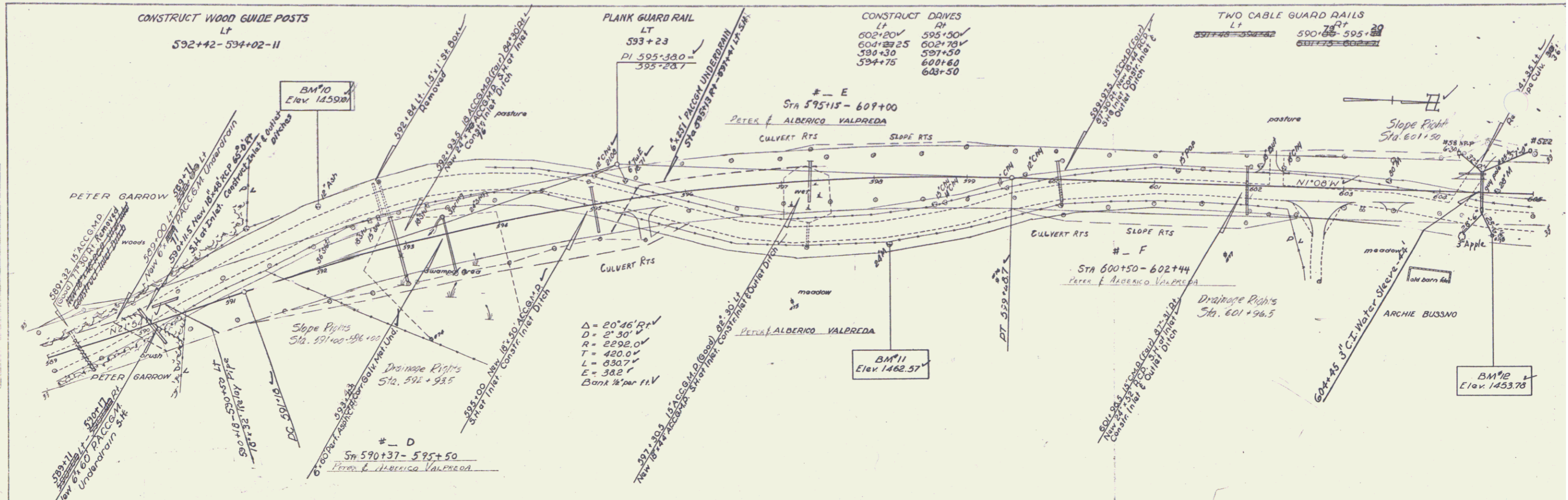


MT HOLLY
Project 5242(4)
Sheet 18 of 97

5

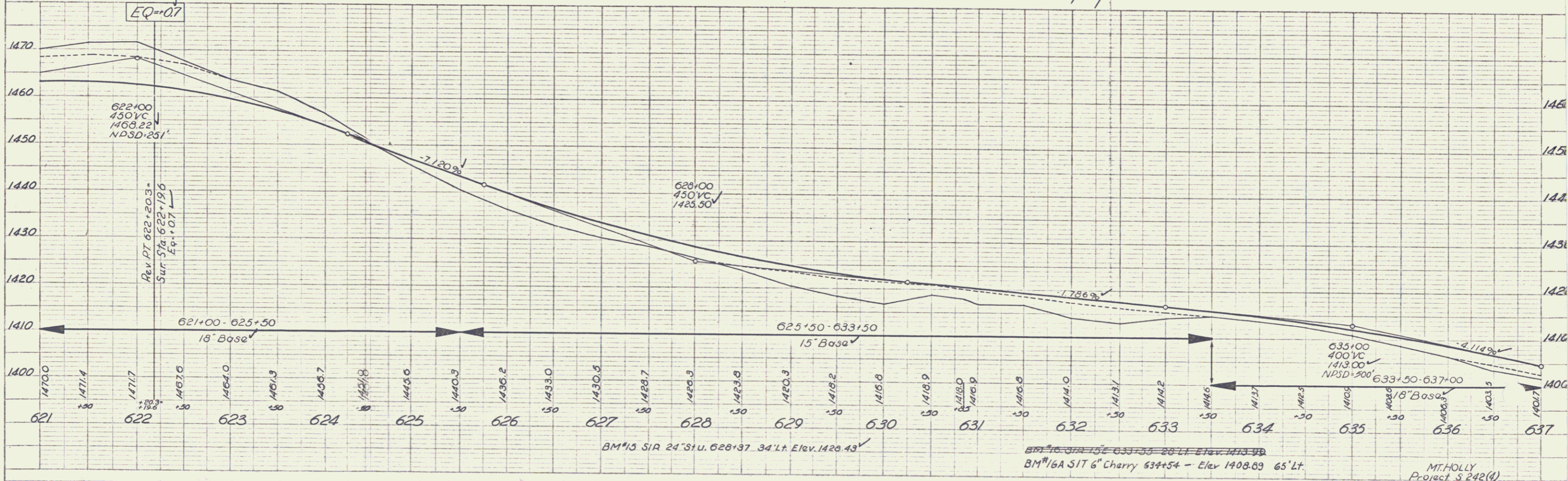
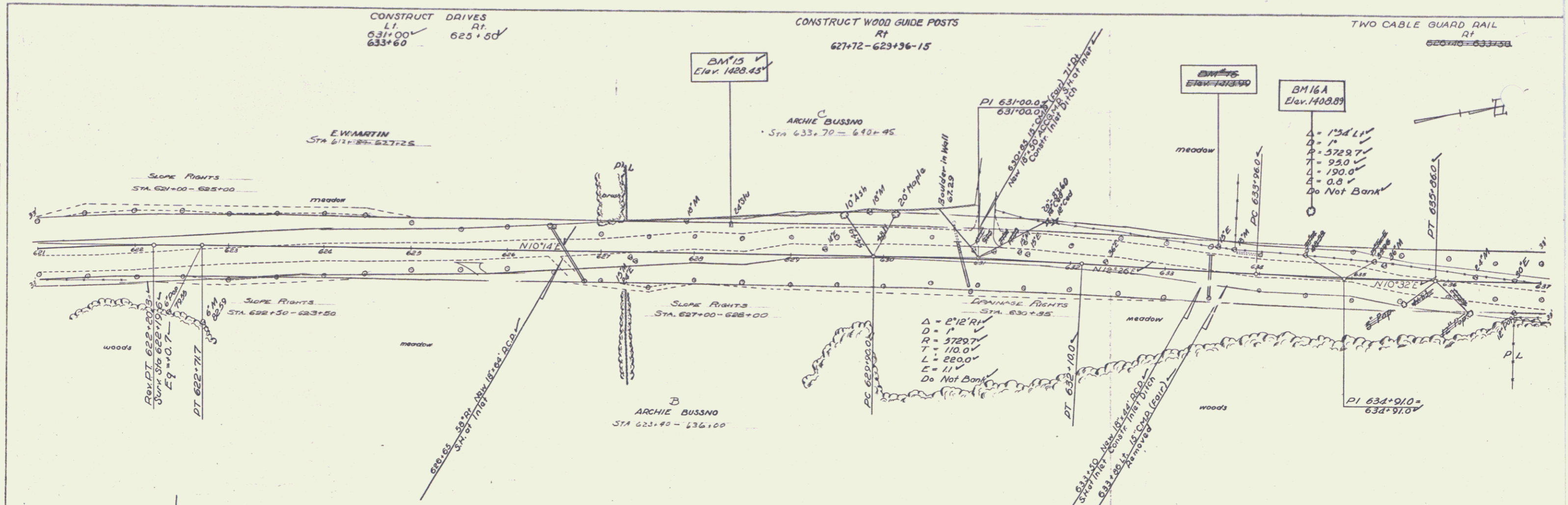
PLAN
 DATE 11/05/92
 DRAWN BY JH
 CHECKED BY JH
 SCALE 1" = 40'

PROFILE
 DATE 11/05/92
 DRAWN BY JH
 CHECKED BY JH
 SCALE 1" = 40'



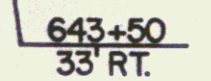
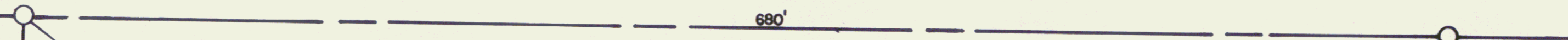
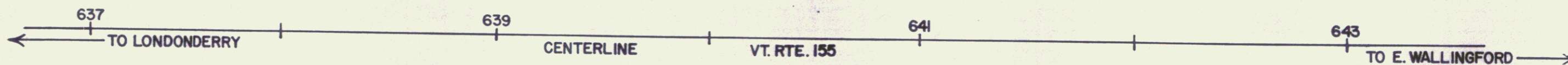
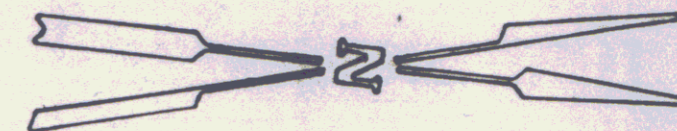
PLAN
 DATE: 11/27/07
 DRAWN BY: J. J. JAMES
 CHECKED BY: J. J. JAMES
 NO. 11/27/07

PROFILE
 DATE: 11/27/07
 DRAWN BY: J. J. JAMES
 CHECKED BY: J. J. JAMES
 NO. 11/27/07

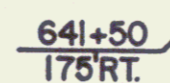


STATE OF VERMONT - ACQUIRED FROM DOROTHY E. HAWKINS
BY W.D. RECORDED 3/16/85 BOOK 38 PG. 421

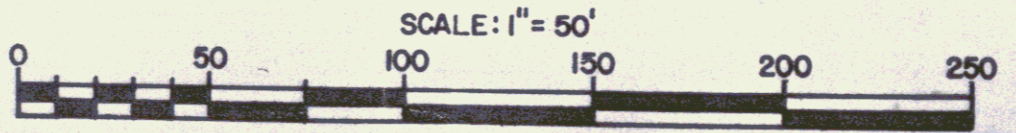
M.P. 0611



DOROTHY E. HAWKINS
TO (2.0A±)
STATE OF VERMONT
BY W.D. RECORDED 12/3/85 IN BK 38/420-21



THE MILL RIVER

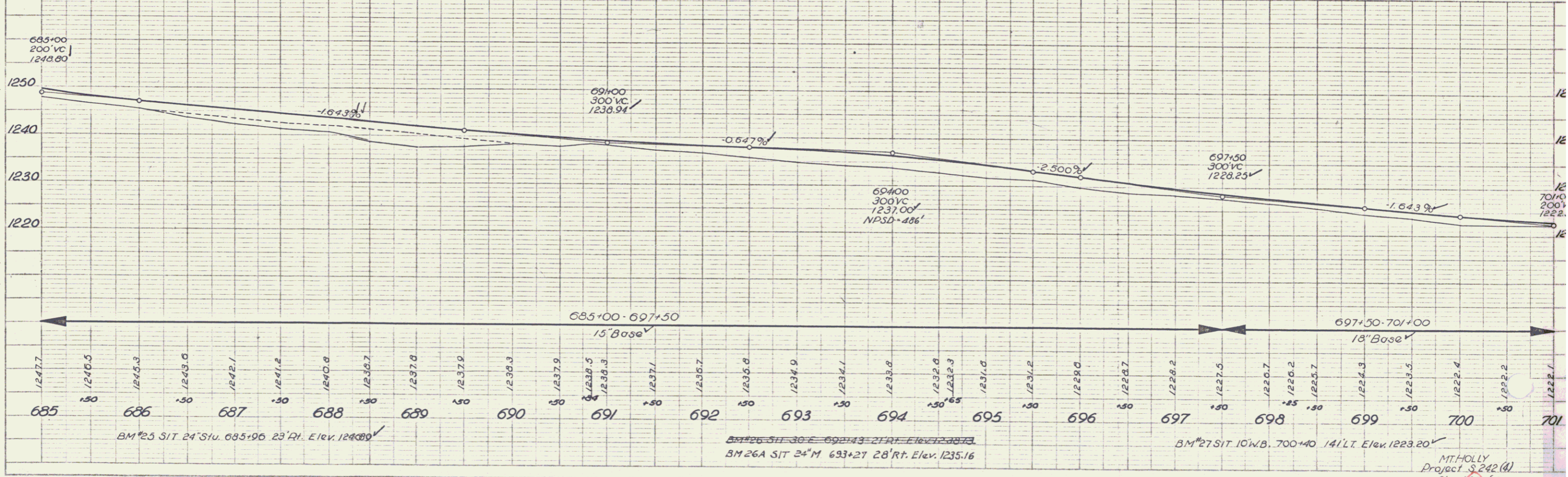
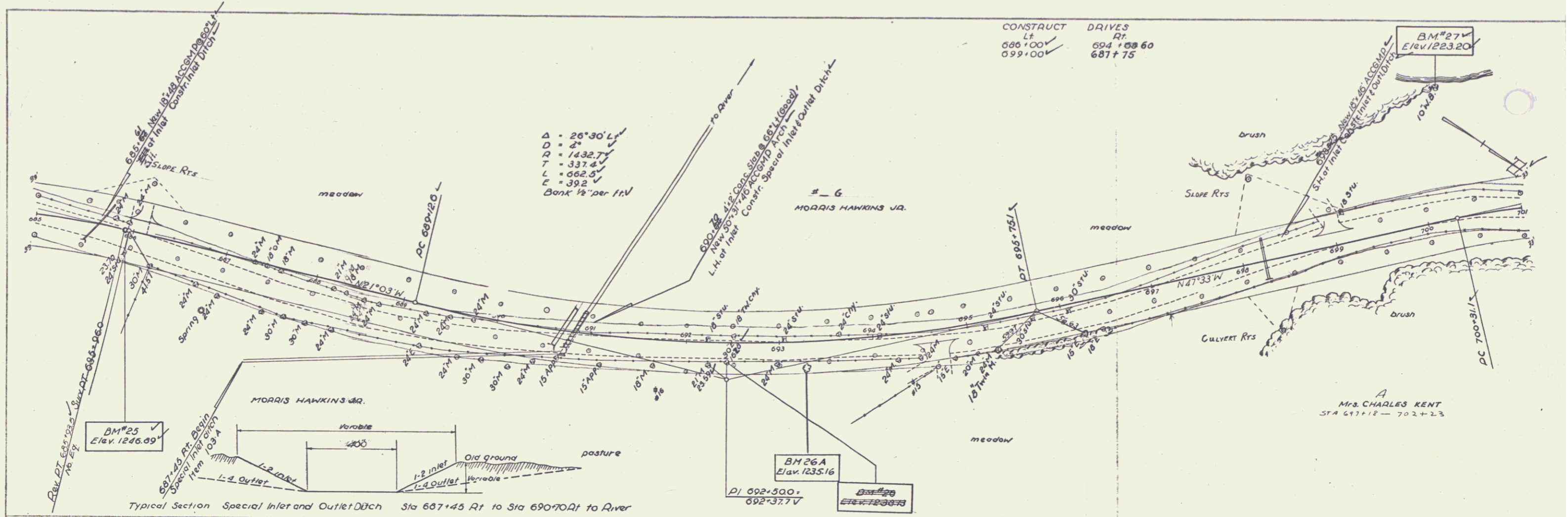


REF. PROJECT: MT. HOLLY S242(4) SHEET 22 OF 97
STATE OF VERMONT
AGENCY OF TRANSPORTATION
TOWN OF MOUNT HOLLY
APPROX. SCALE 1" = 50' DATE 8-27-85 DRAWN BY DEM
DEV. 9-9-85 DEM

VT SHEET 22A
10

PLAN
 DATE: 11/25/55
 DRAWN BY: J.H. HAY
 CHECKED BY: J.H. HAY
 PROJECT: M.T. HOLLY PROJECT 3242 (A)
 SHEET: 2 OF 97

PROFILE
 DATE: 11/25/55
 DRAWN BY: J.H. HAY
 CHECKED BY: J.H. HAY
 PROJECT: M.T. HOLLY PROJECT 3242 (A)
 SHEET: 2 OF 97



M.T. HOLLY
 Project 3242 (A)
 Sheet 2 of 97

