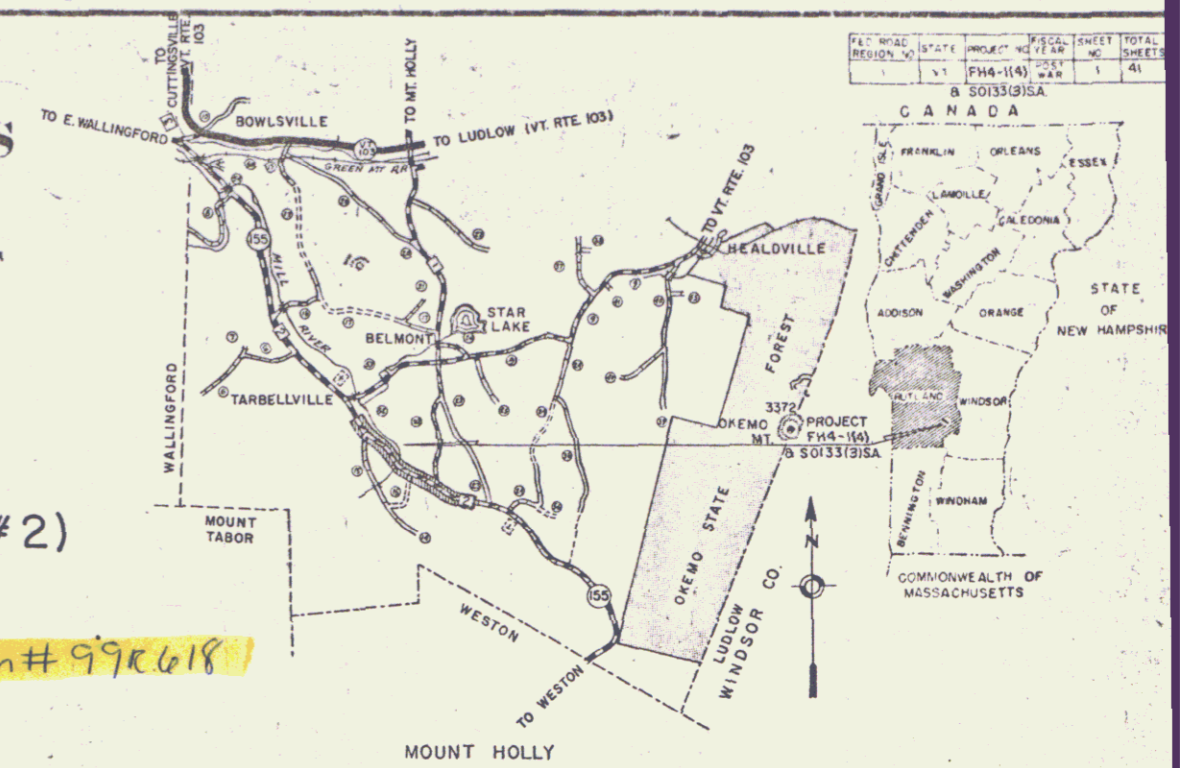


INDEX OF SHEETS

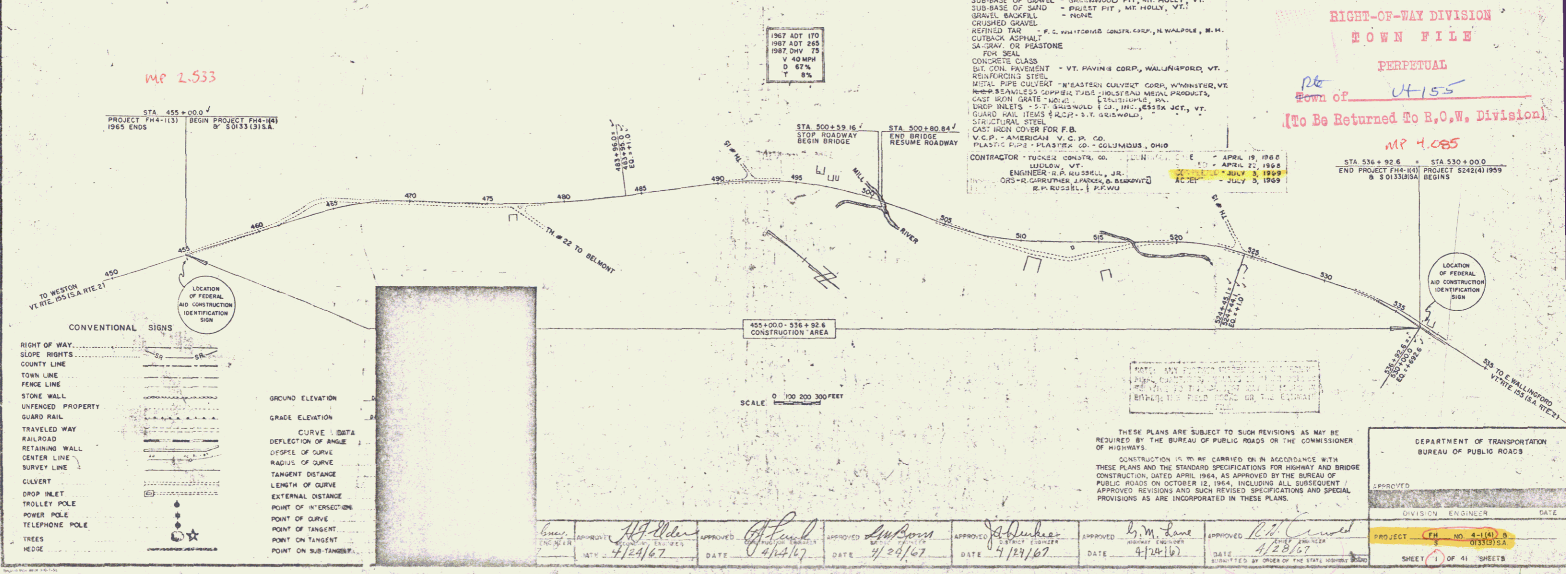
TITLE PAGE  
 TYPICAL CROSS-SECTION OF IMPROVEMENT  
 QUANTITY SHEET  
 PLAN AND DRAINAGE SHEET  
 NETWORK SHEETS  
 VERTICAL PROFILE SHEETS  
 (SOLID ROCK EXCAVATION) 3-10-65  
 B-1 (BANKING TABLES) 7-17-67R  
 B-5 (TYPICAL SLOPE GRADING) 3-10-65  
 B-6 (MUCK EXCAVATION) 3-10-65  
 B-10 (EMBANKMENT ON A SLOPE) 3-10-65  
 B-11 (UNDERDRAIN WITH SHATTERED ROCK SUBGRADE) 3-10-65  
 D-1 (DROP INLET-TYPE 1-B) 8-1-66R  
 D-2 (HEADWALLS, UNDERDRAIN) 7-25-67R  
 D-4 (UNDERDRAIN FLUSHING BASIN) 8-1-66R  
 E-32 (ROAD CONSTRUCTION APPROACH SIGNS) 1-6-67  
 E-34 (ON-PROJECT CONSTRUCTION SIGNS) 5-3-67R  
 G-2A (TWO CABLE GUARD RAIL WITH ANCHORS) 3-10-65  
 G-4 (MARKER POSTS AND GUIDE POSTS) 12-30-65R  
 J-1 (PROJECT MARKERS) 3-10-65  
 27 DETAILS OF C.G.M.P.P. ARCH AT STA. 500+70  
 28-39. CROSS SECTIONS  
 40-41. CHANNEL SECTIONS  
 \* 21-A E-31 (FEDERAL AID CONSTRUCTION IDENTIFICATION SIGNS) 8-28-67

STATE OF VERMONT  
 DEPARTMENT OF HIGHWAYS  
 PROPOSED IMPROVEMENT

FOREST HIGHWAY PROJECT  
**TOWN OF MOUNT HOLLY**  
**COUNTY OF RUTLAND**  
**VERMONT ROUTE #155 (STATE AID ROUTE #2)**  
**WESTON - WALLINGFORD ROAD**  
 BEGINNING AT A POINT 2.532 MILES NORTHWESTERLY OF THE WESTON - MOUNT HOLLY TOWN LINE AND EXTENDING NORTHWESTERLY 1.552 MILES  
 LENGTH OF ROADWAY : 8,172.92 FEET = 1.548 MILES  
 LENGTH OF BRIDGE : 21.68 FEET = 0.004 MILE  
 LENGTH OF PROJECT : 8,194.60 FEET = 1.552 MILES



BENCH MARK DATA BASED ON U.S.G.S. ELEVATIONS



CONVENTIONAL SIGNS

RIGHT OF WAY	GROUND ELEVATION
SLOPE RIGHTS	GRADE ELEVATION
COUNTY LINE	CURVE DATA
TOWN LINE	DEFLECTION OF ANGLE
FENCE LINE	DEGREE OF CURVE
STONE WALL	RADIUS OF CURVE
UNFENCED PROPERTY	TANGENT DISTANCE
GUARD RAIL	LENGTH OF CURVE
TRAVELED WAY	EXTERNAL DISTANCE
RAILROAD	POINT OF INTERSECTION
RETAINING WALL	POINT OF CURVE
CENTER LINE	POINT OF TANGENT
SURVEY LINE	POINT ON TANGENT
CULVERT	POINT ON SUB-TANGENT
DROP INLET	
TROLLEY POLE	
POWER POLE	
TELEPHONE POLE	
TREES	
HEDGE	

MOUNT HOLLY, VT. 4-1-63, 5-1-63, 6-1-63, 7-1-63, 8-1-63, 9-1-63, 10-1-63, 11-1-63, 12-1-63, 1-1-64, 2-1-64, 3-1-64, 4-1-64, 5-1-64, 6-1-64, 7-1-64, 8-1-64, 9-1-64, 10-1-64, 11-1-64, 12-1-64, 1-1-65, 2-1-65, 3-1-65, 4-1-65, 5-1-65, 6-1-65, 7-1-65, 8-1-65, 9-1-65, 10-1-65, 11-1-65, 12-1-65, 1-1-66, 2-1-66, 3-1-66, 4-1-66, 5-1-66, 6-1-66, 7-1-66, 8-1-66, 9-1-66, 10-1-66, 11-1-66, 12-1-66, 1-1-67, 2-1-67, 3-1-67, 4-1-67, 5-1-67, 6-1-67, 7-1-67, 8-1-67, 9-1-67, 10-1-67, 11-1-67, 12-1-67, 1-1-68, 2-1-68, 3-1-68, 4-1-68, 5-1-68, 6-1-68, 7-1-68, 8-1-68, 9-1-68, 10-1-68, 11-1-68, 12-1-68, 1-1-69, 2-1-69, 3-1-69, 4-1-69, 5-1-69, 6-1-69, 7-1-69, 8-1-69, 9-1-69, 10-1-69, 11-1-69, 12-1-69, 1-1-70, 2-1-70, 3-1-70, 4-1-70, 5-1-70, 6-1-70, 7-1-70, 8-1-70, 9-1-70, 10-1-70, 11-1-70, 12-1-70, 1-1-71, 2-1-71, 3-1-71, 4-1-71, 5-1-71, 6-1-71, 7-1-71, 8-1-71, 9-1-71, 10-1-71, 11-1-71, 12-1-71, 1-1-72, 2-1-72, 3-1-72, 4-1-72, 5-1-72, 6-1-72, 7-1-72, 8-1-72, 9-1-72, 10-1-72, 11-1-72, 12-1-72, 1-1-73, 2-1-73, 3-1-73, 4-1-73, 5-1-73, 6-1-73, 7-1-73, 8-1-73, 9-1-73, 10-1-73, 11-1-73, 12-1-73, 1-1-74, 2-1-74, 3-1-74, 4-1-74, 5-1-74, 6-1-74, 7-1-74, 8-1-74, 9-1-74, 10-1-74, 11-1-74, 12-1-74, 1-1-75, 2-1-75, 3-1-75, 4-1-75, 5-1-75, 6-1-75, 7-1-75, 8-1-75, 9-1-75, 10-1-75, 11-1-75, 12-1-75, 1-1-76, 2-1-76, 3-1-76, 4-1-76, 5-1-76, 6-1-76, 7-1-76, 8-1-76, 9-1-76, 10-1-76, 11-1-76, 12-1-76, 1-1-77, 2-1-77, 3-1-77, 4-1-77, 5-1-77, 6-1-77, 7-1-77, 8-1-77, 9-1-77, 10-1-77, 11-1-77, 12-1-77, 1-1-78, 2-1-78, 3-1-78, 4-1-78, 5-1-78, 6-1-78, 7-1-78, 8-1-78, 9-1-78, 10-1-78, 11-1-78, 12-1-78, 1-1-79, 2-1-79, 3-1-79, 4-1-79, 5-1-79, 6-1-79, 7-1-79, 8-1-79, 9-1-79, 10-1-79, 11-1-79, 12-1-79, 1-1-80, 2-1-80, 3-1-80, 4-1-80, 5-1-80, 6-1-80, 7-1-80, 8-1-80, 9-1-80, 10-1-80, 11-1-80, 12-1-80, 1-1-81, 2-1-81, 3-1-81, 4-1-81, 5-1-81, 6-1-81, 7-1-81, 8-1-81, 9-1-81, 10-1-81, 11-1-81, 12-1-81, 1-1-82, 2-1-82, 3-1-82, 4-1-82, 5-1-82, 6-1-82, 7-1-82, 8-1-82, 9-1-82, 10-1-82, 11-1-82, 12-1-82, 1-1-83, 2-1-83, 3-1-83, 4-1-83, 5-1-83, 6-1-83, 7-1-83, 8-1-83, 9-1-83, 10-1-83, 11-1-83, 12-1-83, 1-1-84, 2-1-84, 3-1-84, 4-1-84, 5-1-84, 6-1-84, 7-1-84, 8-1-84, 9-1-84, 10-1-84, 11-1-84, 12-1-84, 1-1-85, 2-1-85, 3-1-85, 4-1-85, 5-1-85, 6-1-85, 7-1-85, 8-1-85, 9-1-85, 10-1-85, 11-1-85, 12-1-85, 1-1-86, 2-1-86, 3-1-86, 4-1-86, 5-1-86, 6-1-86, 7-1-86, 8-1-86, 9-1-86, 10-1-86, 11-1-86, 12-1-86, 1-1-87, 2-1-87, 3-1-87, 4-1-87, 5-1-87, 6-1-87, 7-1-87, 8-1-87, 9-1-87, 10-1-87, 11-1-87, 12-1-87, 1-1-88, 2-1-88, 3-1-88, 4-1-88, 5-1-88, 6-1-88, 7-1-88, 8-1-88, 9-1-88, 10-1-88, 11-1-88, 12-1-88, 1-1-89, 2-1-89, 3-1-89, 4-1-89, 5-1-89, 6-1-89, 7-1-89, 8-1-89, 9-1-89, 10-1-89, 11-1-89, 12-1-89, 1-1-90, 2-1-90, 3-1-90, 4-1-90, 5-1-90, 6-1-90, 7-1-90, 8-1-90, 9-1-90, 10-1-90, 11-1-90, 12-1-90, 1-1-91, 2-1-91, 3-1-91, 4-1-91, 5-1-91, 6-1-91, 7-1-91, 8-1-91, 9-1-91, 10-1-91, 11-1-91, 12-1-91, 1-1-92, 2-1-92, 3-1-92, 4-1-92, 5-1-92, 6-1-92, 7-1-92, 8-1-92, 9-1-92, 10-1-92, 11-1-92, 12-1-92, 1-1-93, 2-1-93, 3-1-93, 4-1-93, 5-1-93, 6-1-93, 7-1-93, 8-1-93, 9-1-93, 10-1-93, 11-1-93, 12-1-93, 1-1-94, 2-1-94, 3-1-94, 4-1-94, 5-1-94, 6-1-94, 7-1-94, 8-1-94, 9-1-94, 10-1-94, 11-1-94, 12-1-94, 1-1-95, 2-1-95, 3-1-95, 4-1-95, 5-1-95, 6-1-95, 7-1-95, 8-1-95, 9-1-95, 10-1-95, 11-1-95, 12-1-95, 1-1-96, 2-1-96, 3-1-96, 4-1-96, 5-1-96, 6-1-96, 7-1-96, 8-1-96, 9-1-96, 10-1-96, 11-1-96, 12-1-96, 1-1-97, 2-1-97, 3-1-97, 4-1-97, 5-1-97, 6-1-97, 7-1-97, 8-1-97, 9-1-97, 10-1-97, 11-1-97, 12-1-97, 1-1-98, 2-1-98, 3-1-98, 4-1-98, 5-1-98, 6-1-98, 7-1-98, 8-1-98, 9-1-98, 10-1-98, 11-1-98, 12-1-98, 1-1-99, 2-1-99, 3-1-99, 4-1-99, 5-1-99, 6-1-99, 7-1-99, 8-1-99, 9-1-99, 10-1-99, 11-1-99, 12-1-99, 1-1-00, 2-1-00, 3-1-00, 4-1-00, 5-1-00, 6-1-00, 7-1-00, 8-1-00, 9-1-00, 10-1-00, 11-1-00, 12-1-00, 1-1-01, 2-1-01, 3-1-01, 4-1-01, 5-1-01, 6-1-01, 7-1-01, 8-1-01, 9-1-01, 10-1-01, 11-1-01, 12-1-01, 1-1-02, 2-1-02, 3-1-02, 4-1-02, 5-1-02, 6-1-02, 7-1-02, 8-1-02, 9-1-02, 10-1-02, 11-1-02, 12-1-02, 1-1-03, 2-1-03, 3-1-03, 4-1-03, 5-1-03, 6-1-03, 7-1-03, 8-1-03, 9-1-03, 10-1-03, 11-1-03, 12-1-03, 1-1-04, 2-1-04, 3-1-04, 4-1-04, 5-1-04, 6-1-04, 7-1-04, 8-1-04, 9-1-04, 10-1-04, 11-1-04, 12-1-04, 1-1-05, 2-1-05, 3-1-05, 4-1-05, 5-1-05, 6-1-05, 7-1-05, 8-1-05, 9-1-05, 10-1-05, 11-1-05, 12-1-05, 1-1-06, 2-1-06, 3-1-06, 4-1-06, 5-1-06, 6-1-06, 7-1-06, 8-1-06, 9-1-06, 10-1-06, 11-1-06, 12-1-06, 1-1-07, 2-1-07, 3-1-07, 4-1-07, 5-1-07, 6-1-07, 7-1-07, 8-1-07, 9-1-07, 10-1-07, 11-1-07, 12-1-07, 1-1-08, 2-1-08, 3-1-08, 4-1-08, 5-1-08, 6-1-08, 7-1-08, 8-1-08, 9-1-08, 10-1-08, 11-1-08, 12-1-08, 1-1-09, 2-1-09, 3-1-09, 4-1-09, 5-1-09, 6-1-09, 7-1-09, 8-1-09, 9-1-09, 10-1-09, 11-1-09, 12-1-09, 1-1-10, 2-1-10, 3-1-10, 4-1-10, 5-1-10, 6-1-10, 7-1-10, 8-1-10, 9-1-10, 10-1-10, 11-1-10, 12-1-10, 1-1-11, 2-1-11, 3-1-11, 4-1-11, 5-1-11, 6-1-11, 7-1-11, 8-1-11, 9-1-11, 10-1-11, 11-1-11, 12-1-11, 1-1-12, 2-1-12, 3-1-12, 4-1-12, 5-1-12, 6-1-12, 7-1-12, 8-1-12, 9-1-12, 10-1-12, 11-1-12, 12-1-12, 1-1-13, 2-1-13, 3-1-13, 4-1-13, 5-1-13, 6-1-13, 7-1-13, 8-1-13, 9-1-13, 10-1-13, 11-1-13, 12-1-13, 1-1-14, 2-1-14, 3-1-14, 4-1-14, 5-1-14, 6-1-14, 7-1-14, 8-1-14, 9-1-14, 10-1-14, 11-1-14, 12-1-14, 1-1-15, 2-1-15, 3-1-15, 4-1-15, 5-1-15, 6-1-15, 7-1-15, 8-1-15, 9-1-15, 10-1-15, 11-1-15, 12-1-15, 1-1-16, 2-1-16, 3-1-16, 4-1-16, 5-1-16, 6-1-16, 7-1-16, 8-1-16, 9-1-16, 10-1-16, 11-1-16, 12-1-16, 1-1-17, 2-1-17, 3-1-17, 4-1-17, 5-1-17, 6-1-17, 7-1-17, 8-1-17, 9-1-17, 10-1-17, 11-1-17, 12-1-17, 1-1-18, 2-1-18, 3-1-18, 4-1-18, 5-1-18, 6-1-18, 7-1-18, 8-1-18, 9-1-18, 10-1-18, 11-1-18, 12-1-18, 1-1-19, 2-1-19, 3-1-19, 4-1-19, 5-1-19, 6-1-19, 7-1-19, 8-1-19, 9-1-19, 10-1-19, 11-1-19, 12-1-19, 1-1-20, 2-1-20, 3-1-20, 4-1-20, 5-1-20, 6-1-20, 7-1-20, 8-1-20, 9-1-20, 10-1-20, 11-1-20, 12-1-20, 1-1-21, 2-1-21, 3-1-21, 4-1-21, 5-1-21, 6-1-21, 7-1-21, 8-1-21, 9-1-21, 10-1-21, 11-1-21, 12-1-21, 1-1-22, 2-1-22, 3-1-22, 4-1-22, 5-1-22, 6-1-22, 7-1-22, 8-1-22, 9-1-22, 10-1-22, 11-1-22, 12-1-22, 1-1-23, 2-1-23, 3-1-23, 4-1-23, 5-1-23, 6-1-23, 7-1-23, 8-1-23, 9-1-23, 10-1-23, 11-1-23, 12-1-23, 1-1-24, 2-1-24, 3-1-24, 4-1-24, 5-1-24, 6-1-24, 7-1-24, 8-1-24, 9-1-24, 10-1-24, 11-1-24, 12-1-24, 1-1-25, 2-1-25, 3-1-25, 4-1-25, 5-1-25, 6-1-25, 7-1-25, 8-1-25, 9-1-25, 10-1-25, 11-1-25, 12-1-25, 1-1-26, 2-1-26, 3-1-26, 4-1-26, 5-1-26, 6-1-26, 7-1-26, 8-1-26, 9-1-26, 10-1-26, 11-1-26, 12-1-26, 1-1-27, 2-1-27, 3-1-27, 4-1-27, 5-1-27, 6-1-27, 7-1-27, 8-1-27, 9-1-27, 10-1-27, 11-1-27, 12-1-27, 1-1-28, 2-1-28, 3-1-28, 4-1-28, 5-1-28, 6-1-28, 7-1-28, 8-1-28, 9-1-28, 10-1-28, 11-1-28, 12-1-28, 1-1-29, 2-1-29, 3-1-29, 4-1-29, 5-1-29, 6-1-29, 7-1-29, 8-1-29, 9-1-29, 10-1-29, 11-1-29, 12-1-29, 1-1-30, 2-1-30, 3-1-30, 4-1-30, 5-1-30, 6-1-30, 7-1-30, 8-1-30, 9-1-30, 10-1-30, 11-1-30, 12-1-30, 1-1-31, 2-1-31, 3-1-31, 4-1-31, 5-1-31, 6-1-31, 7-1-31, 8-1-31, 9-1-31, 10-1-31, 11-1-31, 12-1-31, 1-1-32, 2-1-32, 3-1-32, 4-1-32, 5-1-32, 6-1-32, 7-1-32, 8-1-32, 9-1-32, 10-1-32, 11-1-32, 12-1-32, 1-1-33, 2-1-33, 3-1-33, 4-1-33, 5-1-33, 6-1-33, 7-1-33, 8-1-33, 9-1-33, 10-1-33, 11-1-33, 12-1-33, 1-1-34, 2-1-34, 3-1-34, 4-1-34, 5-1-34, 6-1-34, 7-1-34, 8-1-34, 9-1-34, 10-1-34, 11-1-34, 12-1-34, 1-1-35, 2-1-35, 3-1-35, 4-1-35, 5-1-35, 6-1-35, 7-1-35, 8-1-35, 9-1-35, 10-1-35, 11-1-35, 12-1-35, 1-1-36, 2-1-36, 3-1-36, 4-1-36, 5-1-36, 6-1-36, 7-1-36, 8-1-36, 9-1-36, 10-1-36, 11-1-36, 12-1-36, 1-1-37, 2-1-37, 3-1-37, 4-1-37, 5-1-37, 6-1-37, 7-1-37, 8-1-37, 9-1-37, 10-1-37, 11-1-37, 12-1-37, 1-1-38, 2-1-38, 3-1-38, 4-1-38, 5-1-38, 6-1-38, 7-1-38, 8-1-38, 9-1-38, 10-1-38, 11-1-38, 12-1-38, 1-1-39, 2-1-39, 3-1-39, 4-1-39, 5-1-39, 6-1-39, 7-1-39, 8-1-39, 9-1-39, 10-1-39, 11-1-39, 12-1-39, 1-1-40, 2-1-40, 3-1-40, 4-1-40, 5-1-40, 6-1-40, 7-1-40, 8-1-40, 9-1-40, 10-1-40, 11-1-40, 12-1-40, 1-1-41, 2-1-41, 3-1-41, 4-1-41, 5-1-41, 6-1-41, 7-1-41, 8-1-41, 9-1-41, 10-1-41, 11-1-41, 12-1-41, 1-1-42, 2-1-42, 3-1-42, 4-1-42, 5-1-42, 6-1-42, 7-1-42, 8-1-42, 9-1-42, 10-1-42, 11-1-42, 12-1-42, 1-1-43, 2-1-43, 3-1-43, 4-1-43, 5-1-43, 6-1-43, 7-1-43, 8-1-43, 9-1-43, 10-1-43, 11-1-43, 12-1-43, 1-1-44, 2-1-44, 3-1-44, 4-1-44, 5-1-44, 6-1-44, 7-1-44, 8-1-44, 9-1-44, 10-1-44, 11-1-44, 12-1-44, 1-1-45, 2-1-45, 3-1-45, 4-1-45, 5-1-45, 6-1-45, 7-1-45, 8-1-45, 9-1-45, 10-1-45, 11-1-45, 12-1-45, 1-1-46, 2-1-46, 3-1-46, 4-1-46, 5-1-46, 6-1-46, 7-1-46, 8-1-46, 9-1-46, 10-1-46, 11-1-46, 12-1-46, 1-1-47, 2-1-47, 3-1-47, 4-1-47, 5-1-47, 6-1-47, 7-1-47, 8-1-47, 9-1-47, 10-1-47, 11-1-47, 12-1-47, 1-1-48, 2-1-48, 3-1-48, 4-1-48, 5-1-48, 6-1-48, 7-1-48, 8-1-48, 9-1-48, 10-1-48, 11-1-48, 12-1-48, 1-1-49, 2-1-49, 3-1-49, 4-1-49, 5-1-49, 6-1-49, 7-1-49, 8-1-49, 9-1-49, 10-1-49, 11-1-49, 12-1-49, 1-1-50, 2-1-50, 3-1-50, 4-1-50, 5-1-50, 6-1-50, 7-1-50, 8-1-50, 9-1-50, 10-1-50, 11-1-50, 12-1-50, 1-1-51, 2-1-51, 3-1-51, 4-1-51, 5-1-51, 6-1-51, 7-1-51, 8-1-51, 9-1-51, 10-1-51, 11-1-51, 12-1-51, 1-1-52, 2-1-52, 3-1-52, 4-1-52, 5-1-52, 6-1-52, 7-1-52, 8-1-52, 9-1-52, 10-1-52, 11-1-52, 12-1-52, 1-1-53, 2-1-53, 3-1-53, 4-1-53, 5-1-53, 6-1-53, 7-1-53, 8-1-53, 9-1-53, 10-1-53, 11-1-53, 12-1-53, 1-1-54, 2-1-54, 3-1-54, 4-1-54, 5-1-54, 6-1-54, 7-1-54, 8-1-54, 9-1-54, 10-1-54, 11-1-54, 12-1-54, 1-1-55, 2-1-55, 3-1-55, 4-1-55, 5-1-55, 6-1-55, 7-1-55, 8-1-55, 9-1-55, 10-1-55, 11-1-55, 12-1-55, 1-1-56, 2-1-56, 3-1-56, 4-1-56, 5-1-56, 6-1-56, 7-1-56, 8-1-56, 9-1-56, 10-1-56, 11-1-56, 12-1-56, 1-1-57, 2-1-57, 3-1-57, 4-1-57, 5-1-57, 6-1-57, 7-1-57, 8-1-57, 9-1-57, 10-1-57, 11-1-57, 12-1-57, 1-1-58, 2-1-58, 3-1-58, 4-1-58, 5-1-58, 6-1-58, 7-1-58, 8-1-58, 9-1-58, 10-1-58, 11-1-58, 12-1-58, 1-1-59, 2-1-59, 3-1-59, 4-1-59, 5-1-59, 6-1-59, 7-1-59, 8-1-59, 9-1-59, 10-1-59, 11-1-59, 12-1-59, 1-1-60, 2-1-60, 3-1-60, 4-1-60, 5-1-60, 6-1-60, 7-1-60, 8-1-60, 9-1-60, 10-1-60, 11-1-60, 12-1-60, 1-1-61, 2-1-61, 3-1-61, 4-1-61, 5-1-61, 6-1-61, 7-1-61, 8-1-61, 9-1-61, 10-1-61, 11-1-61, 12-1-61, 1-1-62, 2-1-62, 3-1-62, 4-1-62, 5-1-62, 6-1-62, 7-1-62, 8-1-62, 9-1-62, 10-1-62, 11-1-62, 12-1-62, 1-1-63, 2-1-63, 3-1-63, 4-1-63, 5-1-63, 6-1-63, 7-1-63, 8-1-63, 9-1-63, 10-1-63, 11-1-63, 12-1-63, 1-1-64, 2-1-64, 3-1-64, 4-1-64, 5-1-64, 6-1-64, 7-1-64, 8-1-64, 9-1-64, 10-1-64, 11-1-64, 12-1-64, 1-1-65, 2-1-65, 3-1-65, 4-1-65, 5-1-65, 6-1-65, 7-1-65, 8-1-65, 9-1-65, 10-1-65, 11-1-65, 12-1-65, 1-1-66, 2-1-66, 3-1-66, 4-1-66, 5-1-66, 6-1-66, 7-1-66, 8-1-66, 9-1-66, 10-1-66, 11-1-66, 12-1-66, 1-1-67, 2-1-67, 3-1-67, 4-1-67, 5-1-67, 6-1-67, 7-1-67, 8-1-67, 9-1-67, 10-1-67, 11-1-67, 12-1-67, 1-1-68, 2-1-68, 3-1-68, 4-1-68, 5-1-68, 6-1-68, 7-1-68, 8-1-68, 9-1-68, 10-1-68, 11-1-68, 12-1-68, 1-1-69, 2-1-69, 3-1-69, 4-1-69, 5-1-69, 6-1-69, 7-1-69, 8-1-69, 9-1-69, 10-1-69, 11-1-69, 12-1-69, 1-1-70, 2-1-70, 3-1-70, 4-1-70, 5-1-70, 6-1-70, 7-1-70, 8-1-70, 9-1-70, 10-1-70, 11-1-70, 12-1-70, 1-1-71, 2-1-71, 3-1-71, 4-1-71, 5-1-71, 6-1-71, 7-1-71,

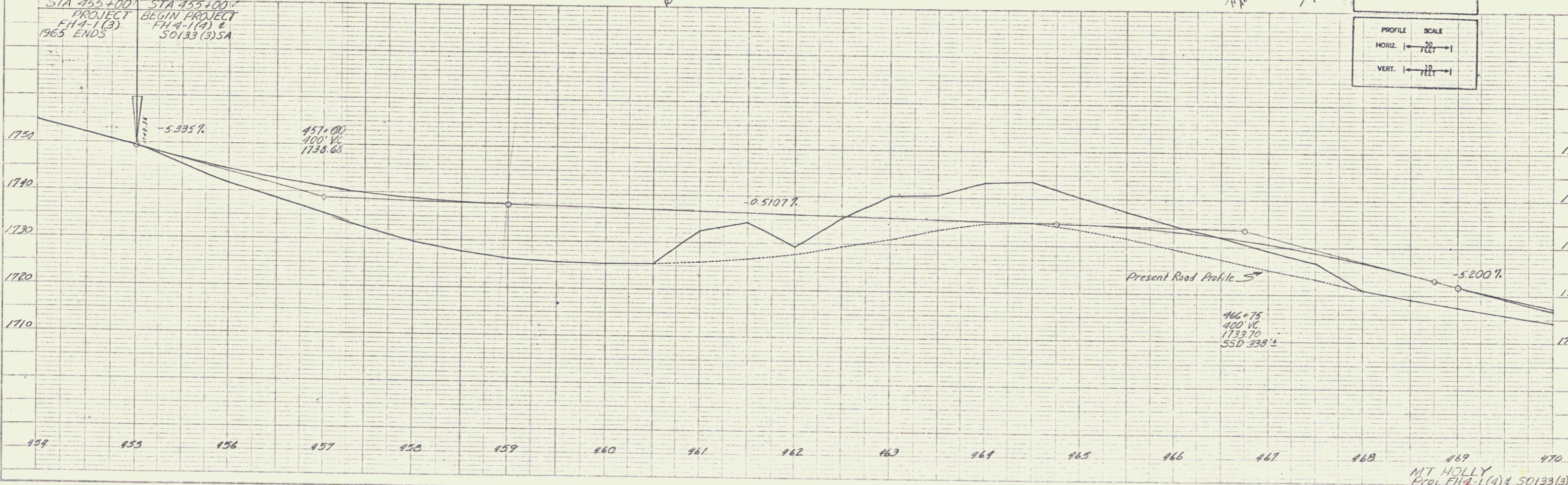
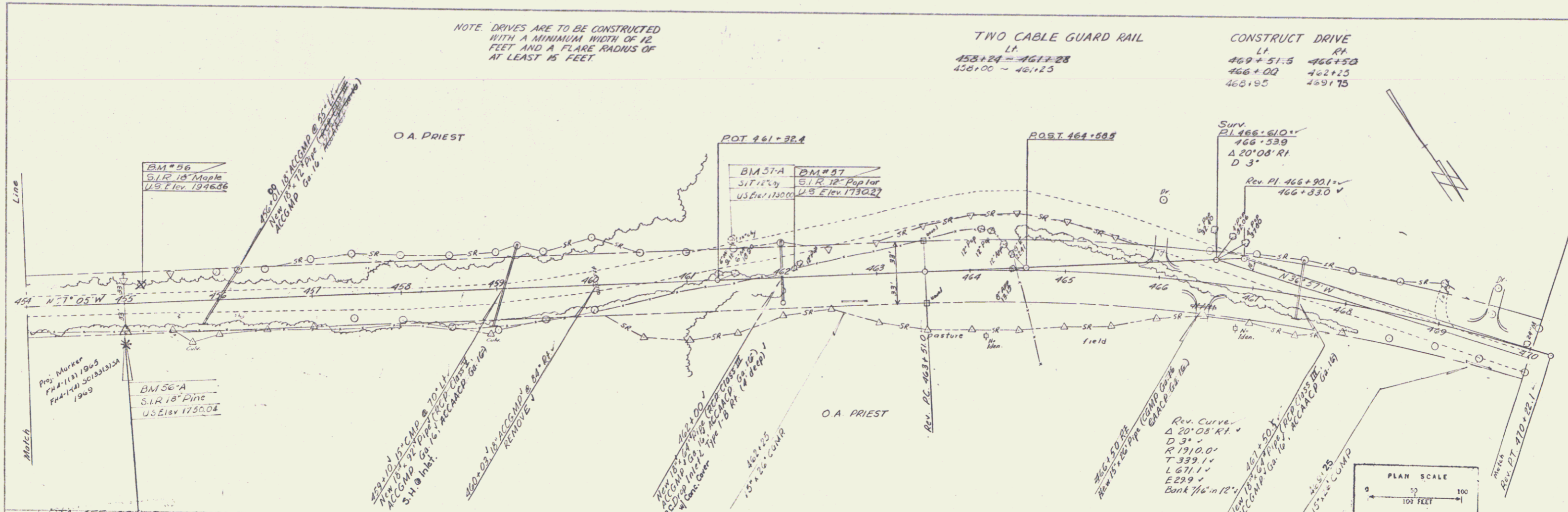
NOTE: DRIVES ARE TO BE CONSTRUCTED WITH A MINIMUM WIDTH OF 12 FEET AND A FLARE RADIUS OF AT LEAST 15 FEET

TWO CABLE GUARD RAIL

CONSTRUCT DRIVE

LT. 458+24 - 461+28  
458+00 - 46+25

LT. 469+51.5 - 466+50  
466+00 - 462+25  
468+95 - 469+75



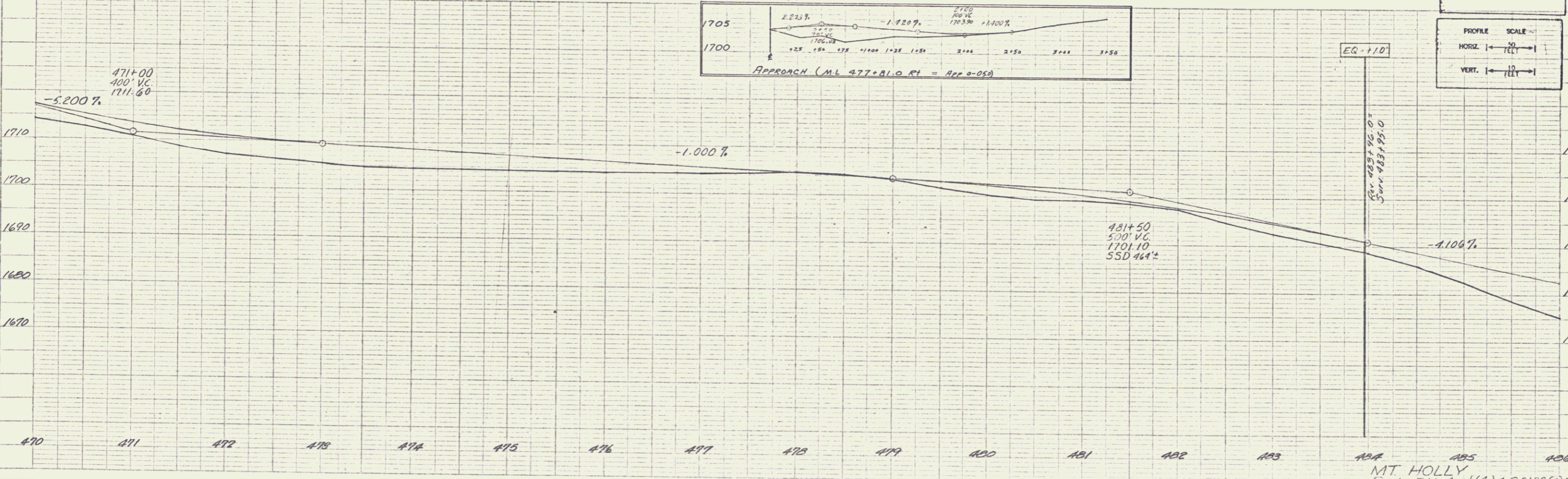
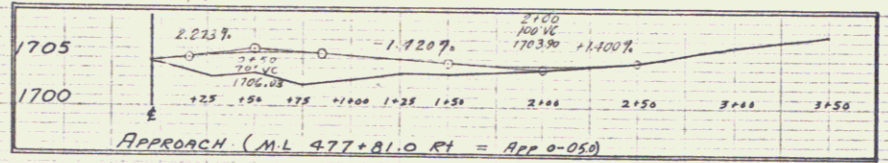
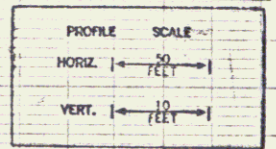
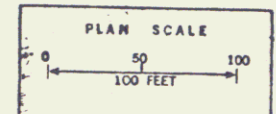
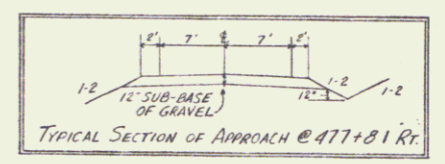
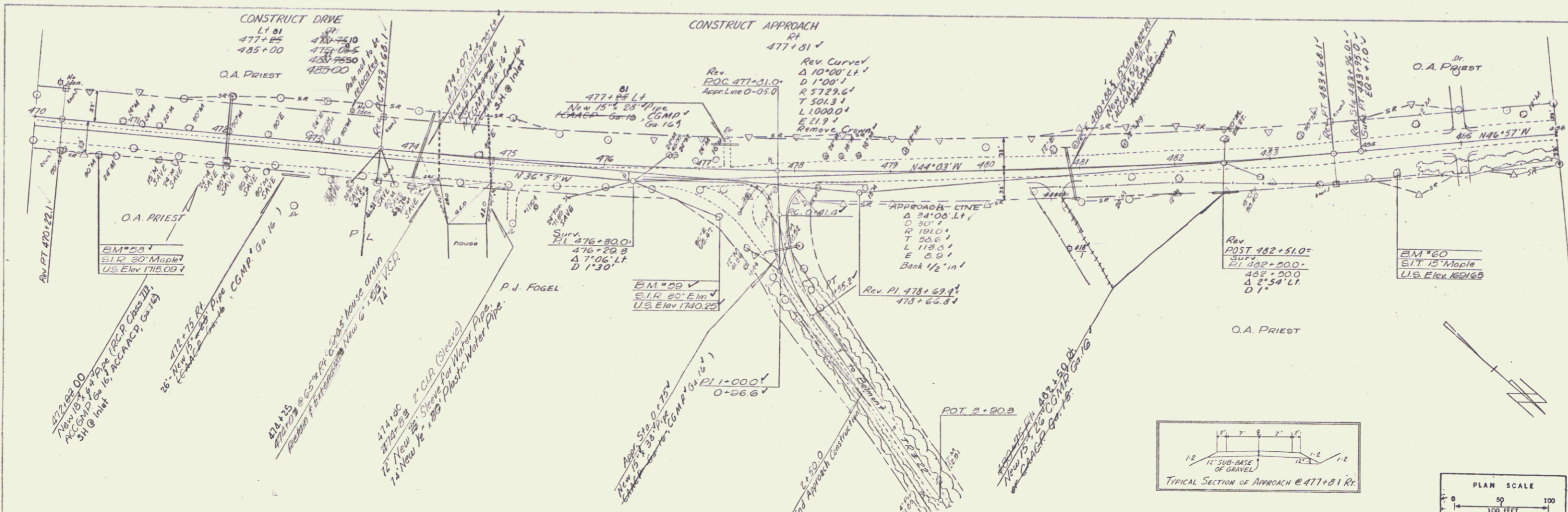
PLAN  
DATE: 11/11/05  
PROJECT: FH 4-1(3)  
1965 ENDS

PROFILE  
DATE: 11/11/05  
PROJECT: FH 4-1(3)  
1965 ENDS

PLAN SCALE  
0 50 100 FEET

PROFILE SCALE  
HORIZ. 1" = 50 FEET  
VERT. 1" = 10 FEET

MT HOLLY  
Proj. FH 4-1(4) & 50133(3)S  
Sheet 7 of 41



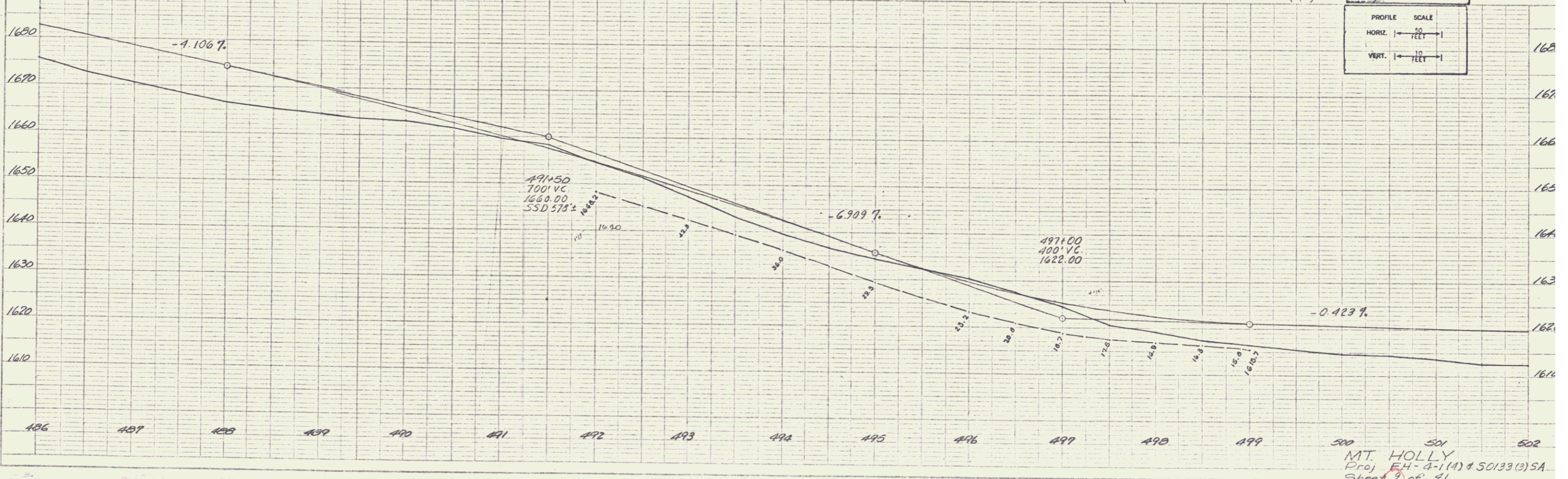
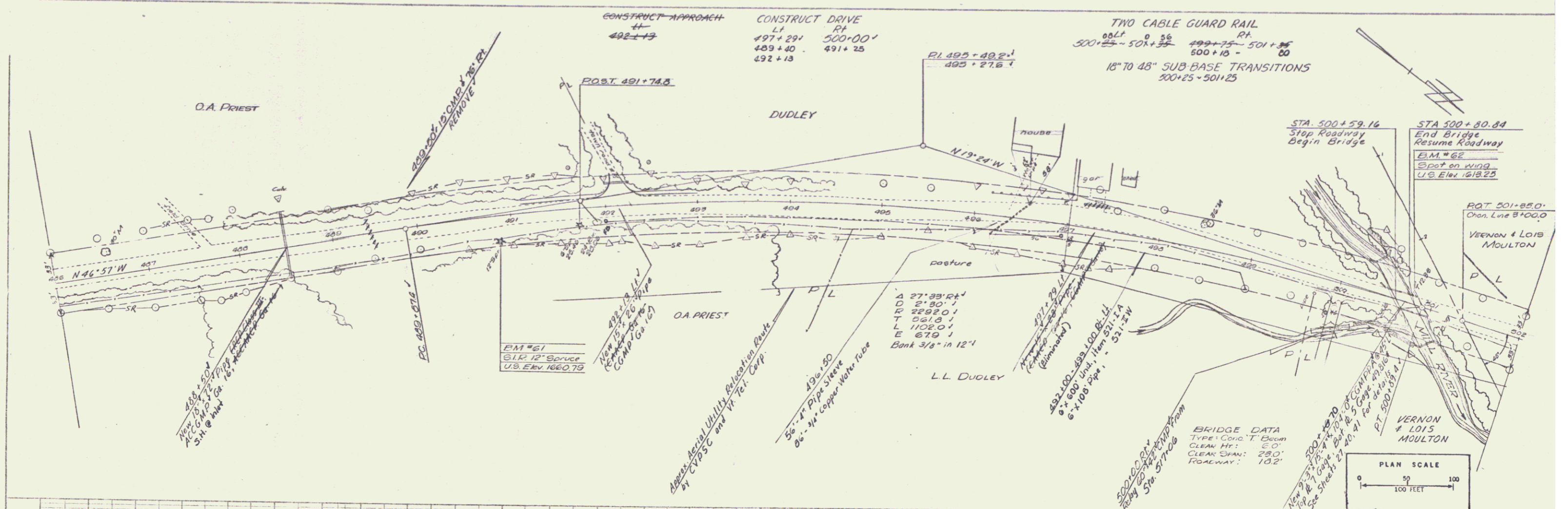
PLAN  
 1/4" = 100'  
 1/8" = 50'  
 1/16" = 25'

PROFILE  
 1" = 10'  
 1/4" = 25'

MT HOLLY  
 Proj. FH-2-1(4) & 50133(3) SA  
 Sheet 8 of 41

PLAN  
 DATE: 0-69  
 DRAWN BY: Spaulding  
 CHECKED BY: Loumar  
 PROJECT: 50133(3) SA

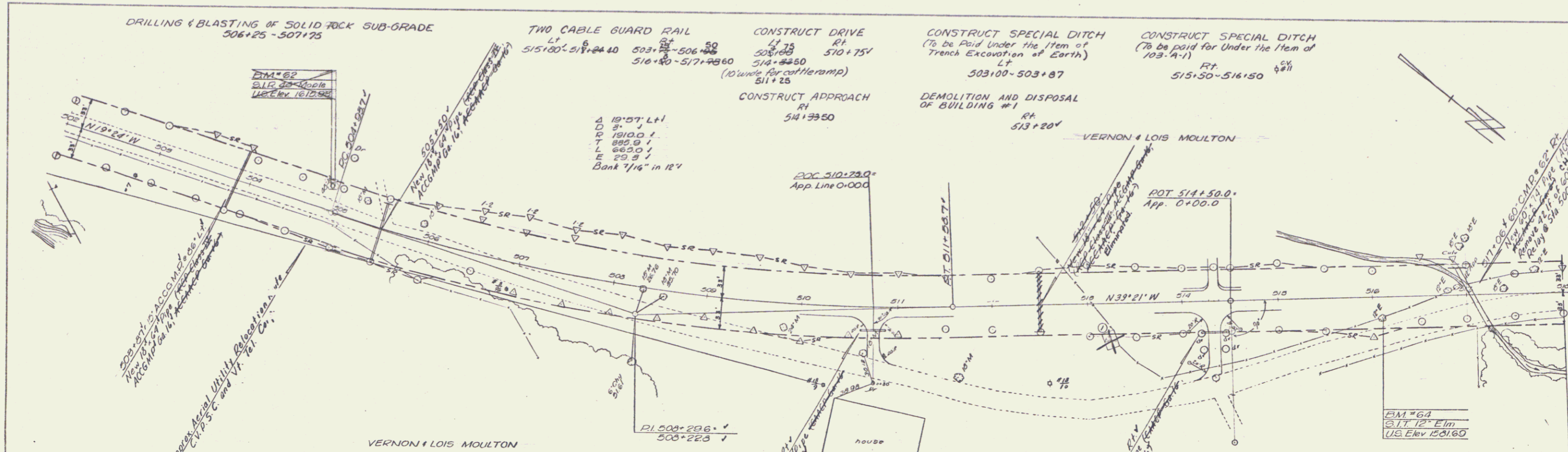
PROFILE  
 DATE: 0-69  
 DRAWN BY: A.B. Higuera  
 CHECKED BY: RAK  
 PROJECT: 50133(3) SA



PLAN SCALE  
 0 50 100 FEET

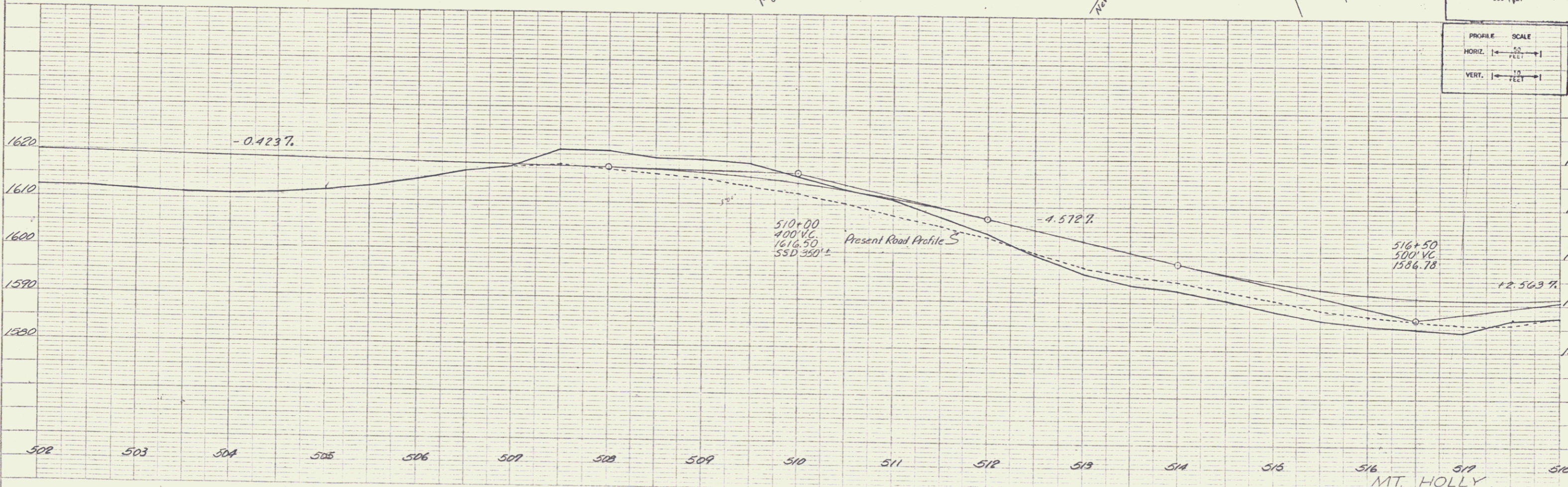
PROFILE SCALE  
 HORIZ. 1" = 20 FEET  
 VERT. 1" = 10 FEET

MT. HOLLY  
 Proj. EH-4-1(A) & 50133(3) SA  
 Sheet 3 of 41



PLAN  
 SHEET NO. 10  
 DATE 7-61  
 DRAWN BY [illegible]  
 CHECKED BY [illegible]

PROFILE  
 SHEET NO. 26  
 DATE 7-61  
 DRAWN BY [illegible]  
 CHECKED BY [illegible]



PLAN SCALE  
 0 50 100  
 FEET

PROFILE SCALE  
 HORIZ. 1" = 100'  
 VERT. 1" = 10'

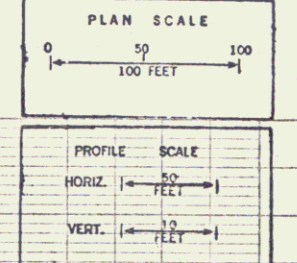
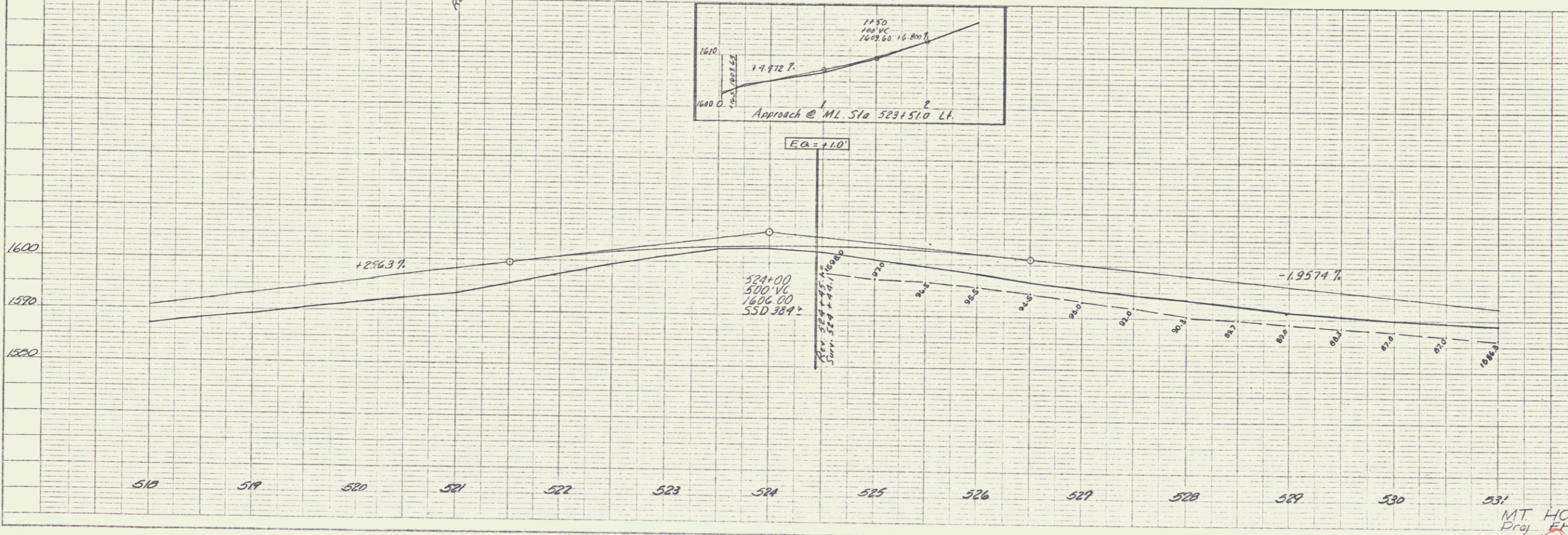
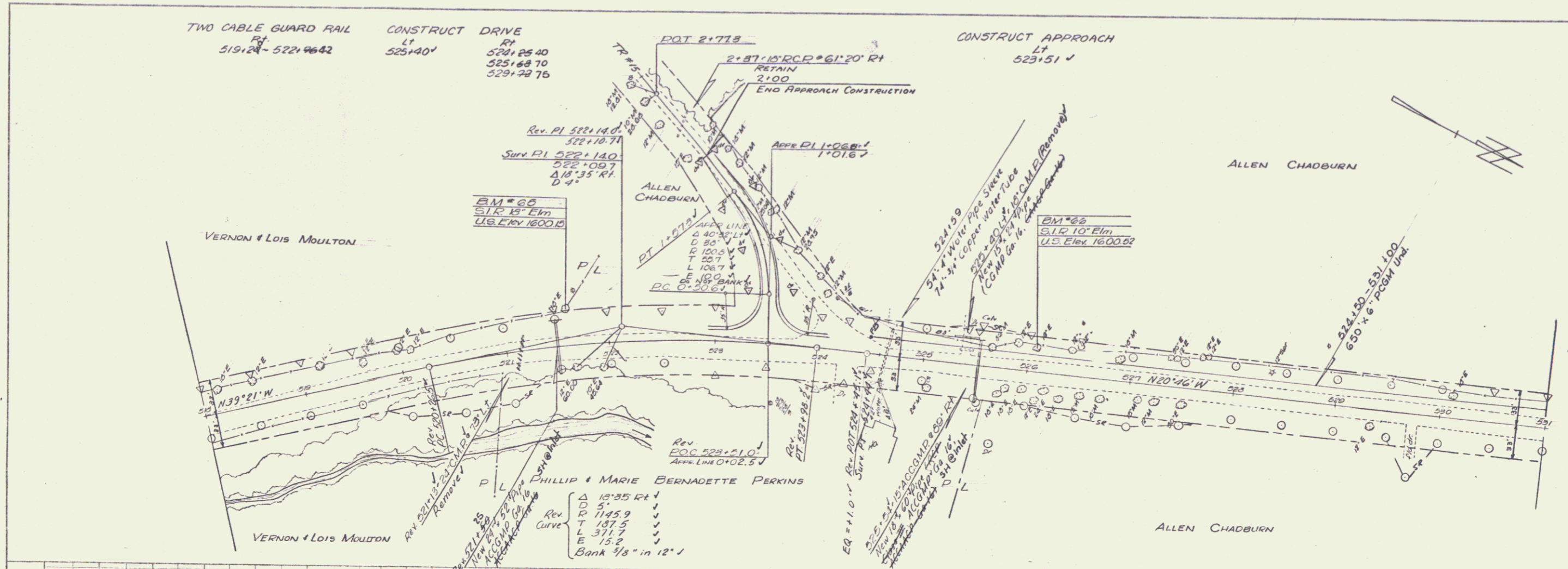
STATES PLAN PROFILE & P&R BY STANDARD  
 ENGINEERING CO. INC. NEW YORK

MT. HOLLY  
 Proj. FH-4-1(4) & 50133(3) SA  
 Sheet 10 of 41

5

PLAN  
 DATE: 5-20-87  
 DRAWN BY: S. J. TOWNSEND  
 CHECKED BY: J. W. CHILKOTI  
 NO. 1

PROFILE  
 DATE: 5-20-87  
 DRAWN BY: S. J. TOWNSEND  
 CHECKED BY: J. W. CHILKOTI  
 NO. 1



MT HOLLY  
 Proj. EH-2-1(4) & 50133(3) SA  
 Sheet 11 of 41

6

