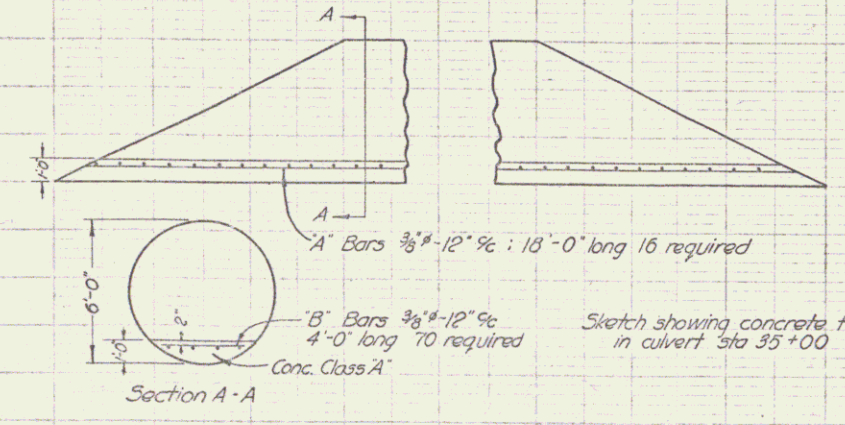
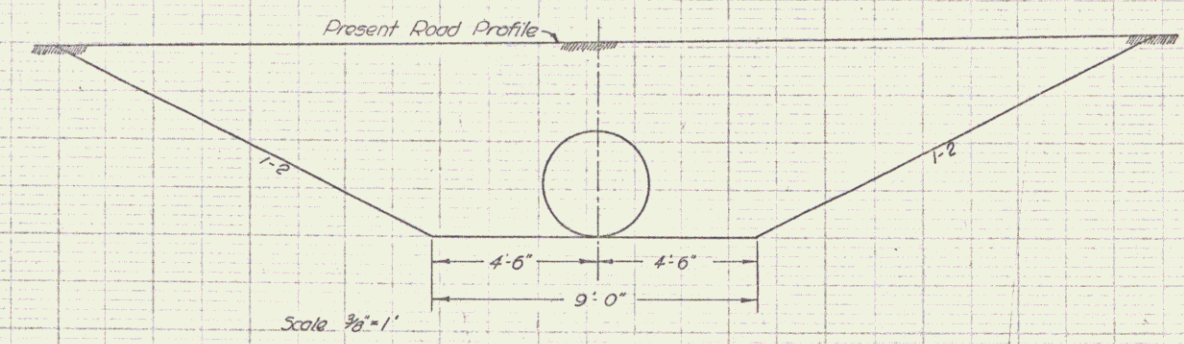
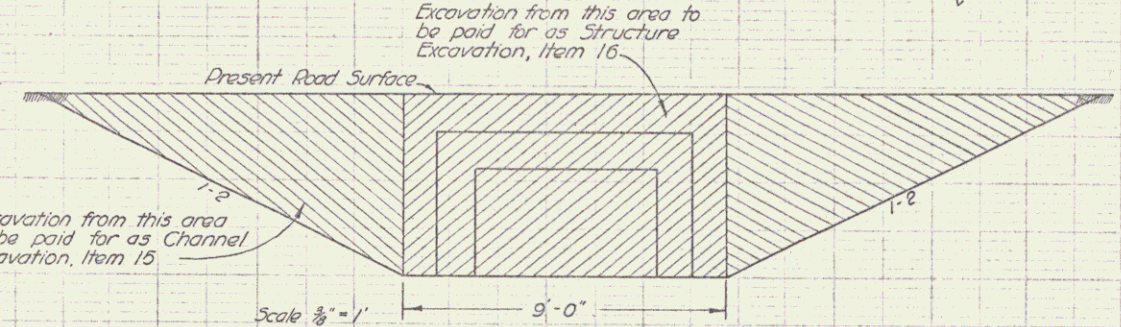
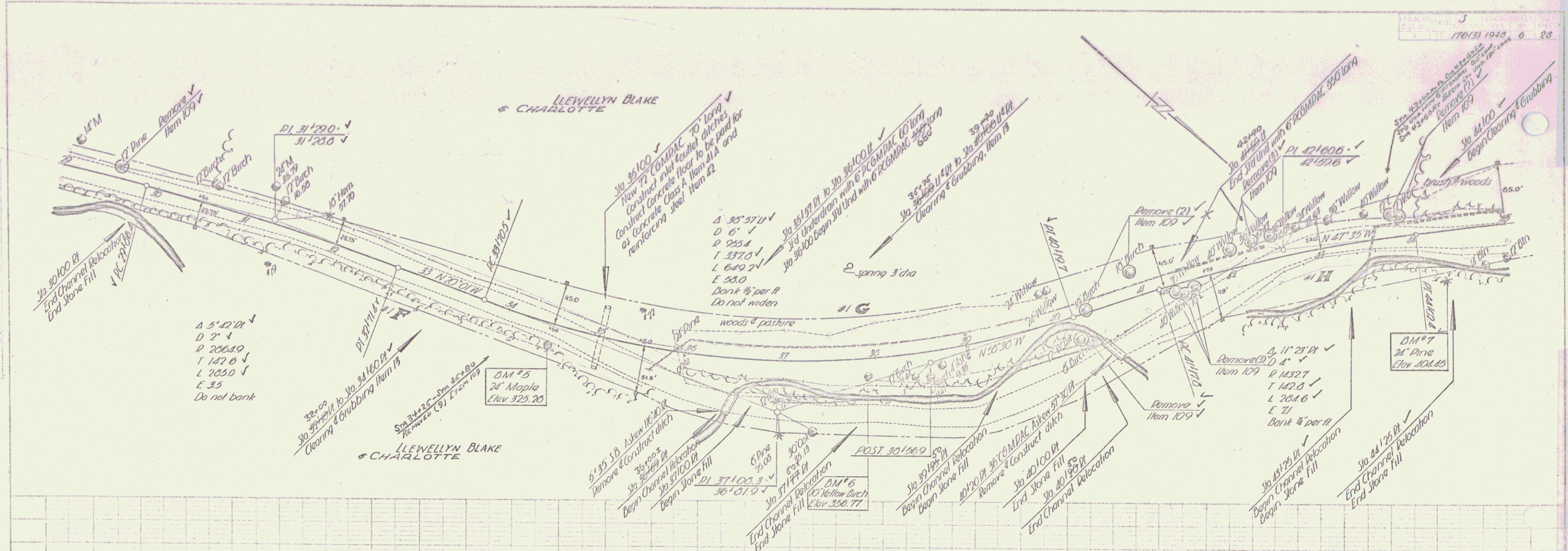


176(3)  
 1948  
 6  
 28  
 176(3) 1948 6 28  
 176(3) 1948 6 28



Scale 1/4" = 1'  
 B.M. # 5 Spite in root 21" Maple 19 ft. rt. sta. 34+50 Elev. 325.28  
 B.M. # 6 Spite in root 10" Yellow Birch 18 ft. rt. sta. 37+90 Elev. 356.77  
 B.M. # 7 Spite in root 24" Pine 54 ft. rt. sta. 44+29 Elev. 404.45

Sketch showing removal of 36 COMBAC at sta 40+20 and construction of ditch excavation encountered in this work to be paid for as Trench Excavation of Earth, Item 12A or Trench Excavation of Rock, Item 12B