

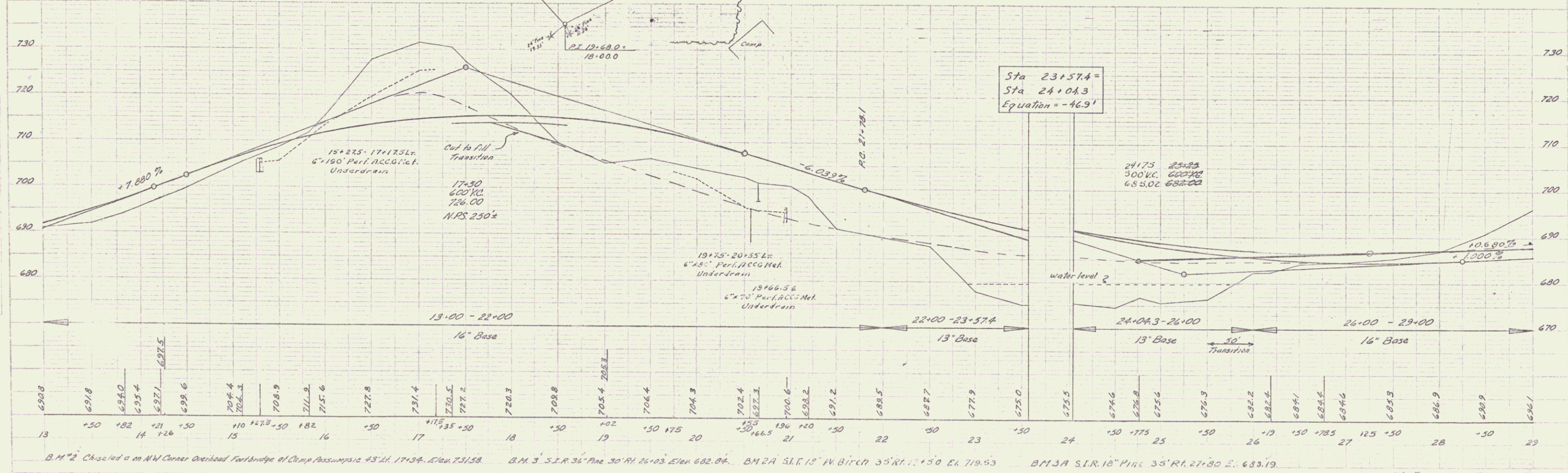
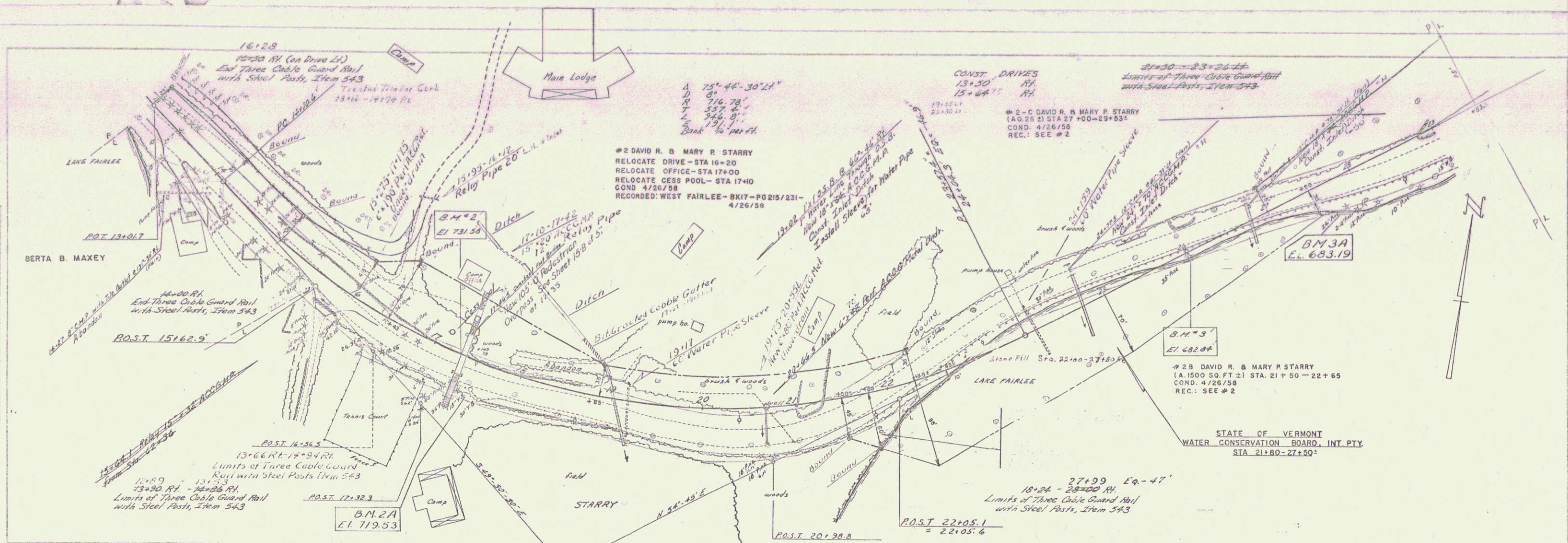
PLAN
 SCALE 1" = 40'
 DATE 10/1/58
 DRAWN BY J. J. O'NEILL
 CHECKED BY J. J. O'NEILL

PROFILE
 SCALE 1" = 40'
 DATE 10/1/58
 DRAWN BY J. J. O'NEILL
 CHECKED BY J. J. O'NEILL

B.M. #1 Christened S.E. Corner New Bridge over Middle Brook 12" R.I. 0+00. Elev. 688.50.

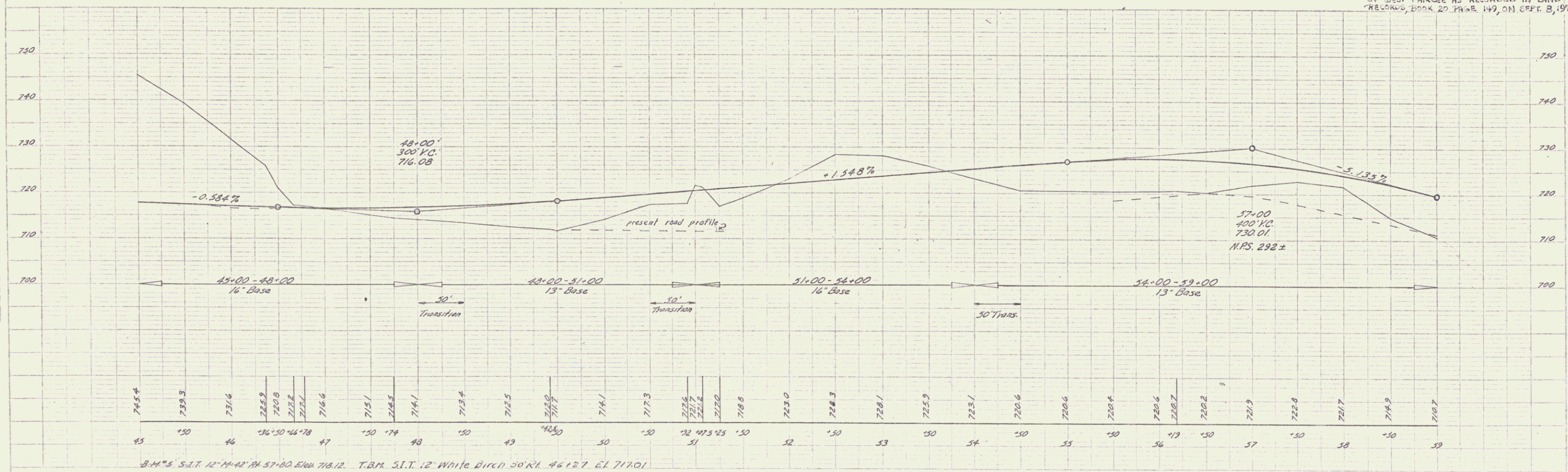
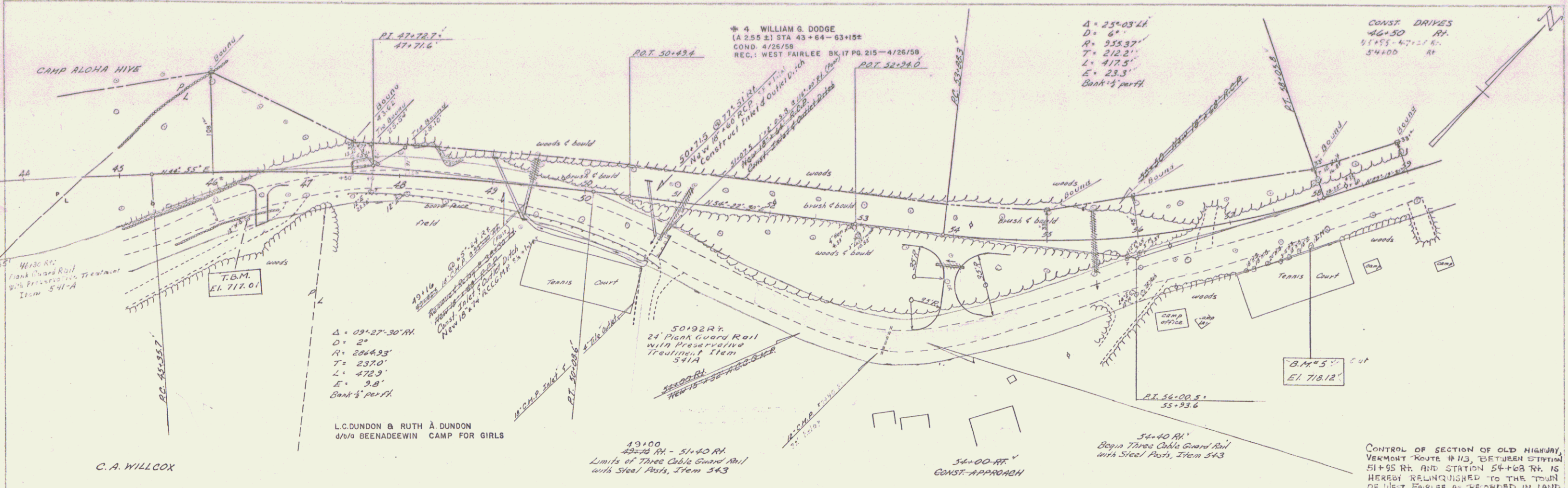
B.M. #1A Spike in Tel. Pole 50' R.I. 9+90. Elev. 683.78

W FAIRLEE - FAIRLER
 Project 5 No. 018001
 Sheet 9 of 57 Sheets



B.M. 2 Chisled on NW Corner Overhead Footbridge of Camp Assumpsio 43.11, 17+34, Elev. 731.58. B.M. 3 S.I.R. 36" Pine 30' RH 26+03 Elev. 682.84. B.M. 2A S.I.R. 18" N. Birch 35' RH 17+50 Elev. 719.53. B.M. 3A S.I.R. 18" Pine 35' RH 27+80 Elev. 683.19.

W. FAIRLEE - FAIRLEE
 Project S No. 01801D
 Sheet 10 of 37 Sheets



44
 45
 46
 47
 48
 49
 50
 51
 52
 53
 54
 55
 56
 57
 58
 59

745.4
 738.3
 731.6
 725.9
 720.8
 717.7
 716.6
 715.1
 714.4
 714.1
 713.4
 712.5
 712.2
 711.7
 711.1
 710.3
 709.7

B.M.'s S.I.T. 12" 11" 42" 11" 57' 30" 5104 718.12. T.B.M. S.I.T. 12" White D.I.C. 50' R.H. 46 127 EL 717.01

W. FAIRLEE - FAIRLEE
 Project 5 No. 0180 (1)
 Sheet 12 of 57 Sheets

