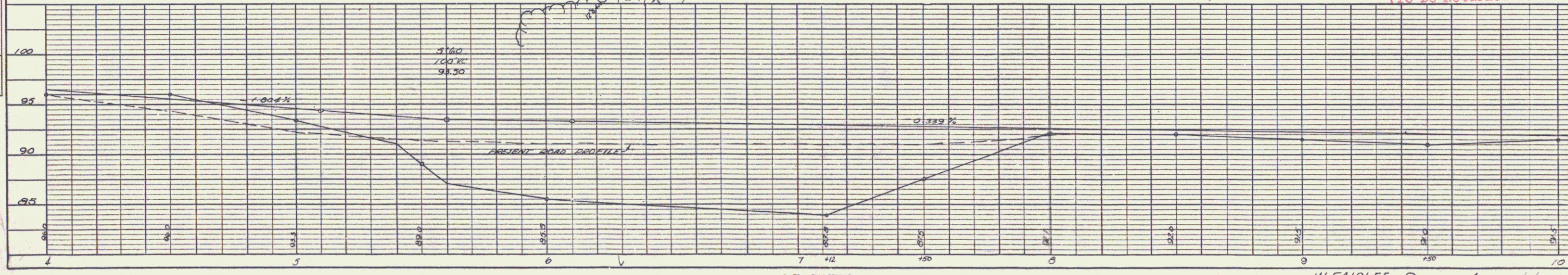
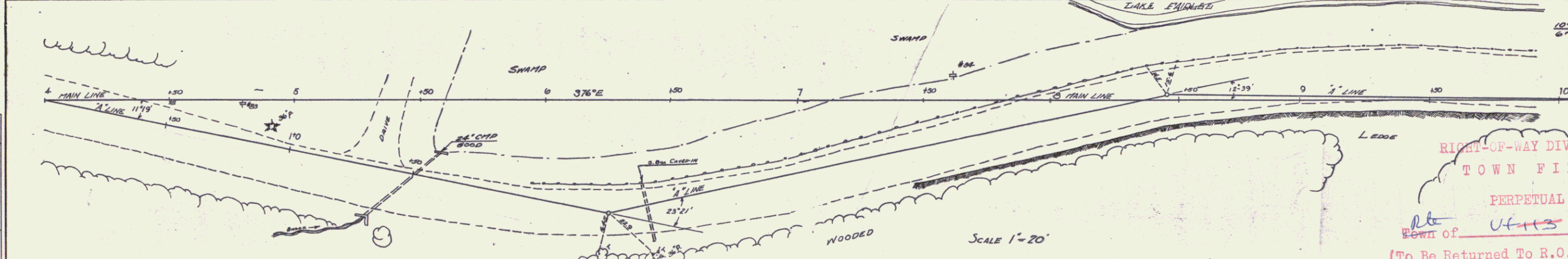
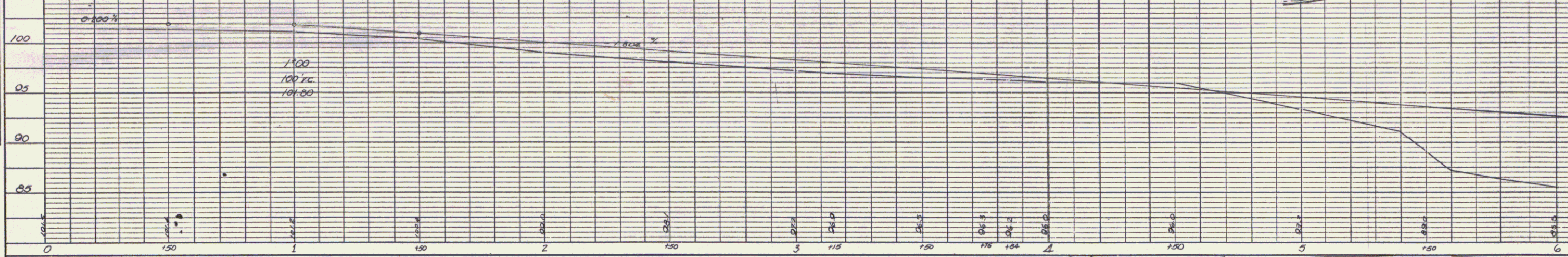
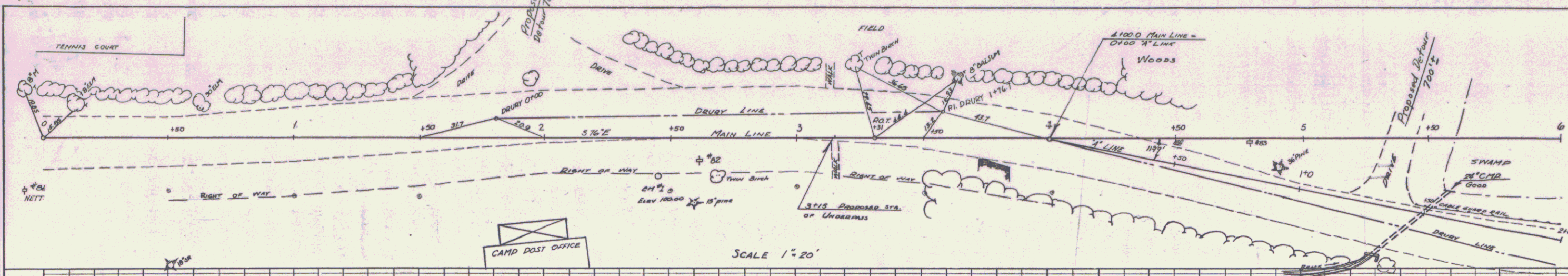


DATE: 3/25/54
 BY: ZIEGLER
 REVISIONS:
 REVISION NO. DATE BY
 PLAN
 DRAWING NO. 1174
 NOTE BOOK NO. 1174
 CHECKED BY: [Signature]
 DATE: 3/25/54

DATE: 3/25/54
 BY: ZIEGLER
 REVISIONS:
 REVISION NO. DATE BY
 PROFILE
 DRAWING NO. 1174
 NOTE BOOK NO. 1174
 CHECKED BY: [Signature]
 DATE: 3/25/54



MP 3.31
 RIGHT-OF-WAY DIVISION
 TOWN FILE 1196
 PERPETUAL
 Town of UT-113-244
 (To Be Returned To R.O.W. Division)

B.M. 41 SUNK IN STUMP 14' RIGHT STATION 2+45 ELEVATION ASSUMED 100.00 SAME BENCH AS USED BY DRIVEY

PLATE 1 - PLAN - PROFILE G. S. & S. L. STUBBS
 EQUIPPED & ESSER CO., NEW YORK

W FAIRLEE RTE 113 ALOHA HIVE Mar. Apr. 1954

SHEET 4

3