

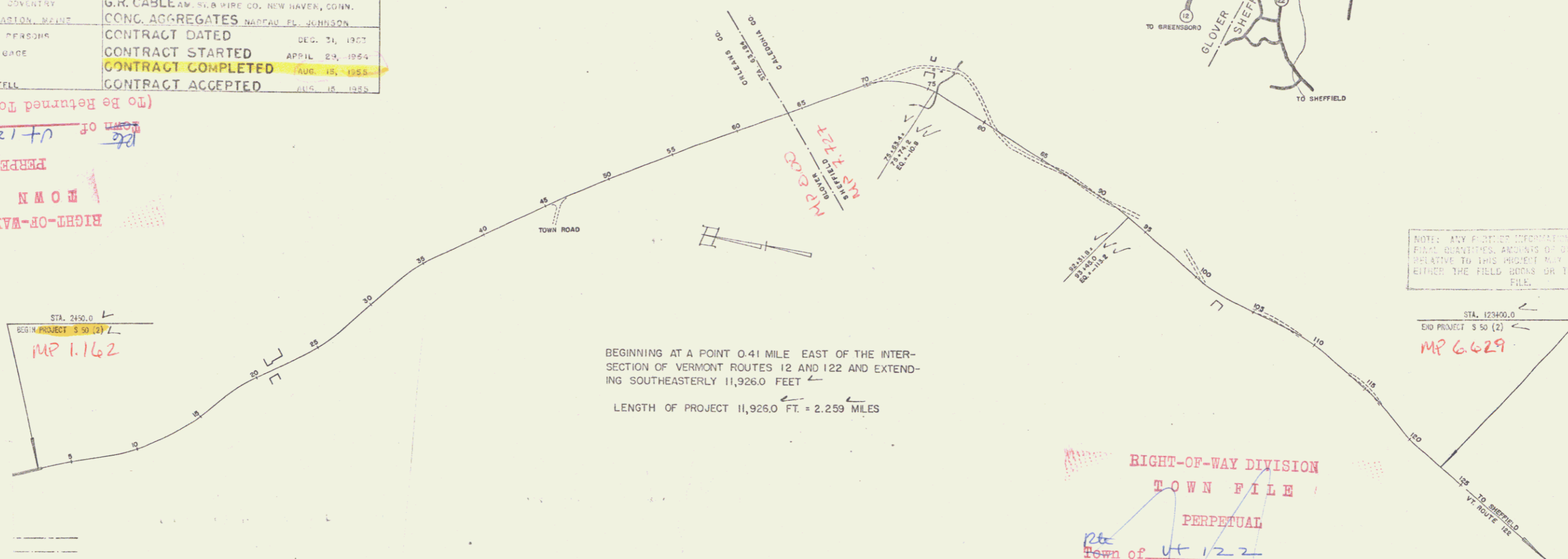
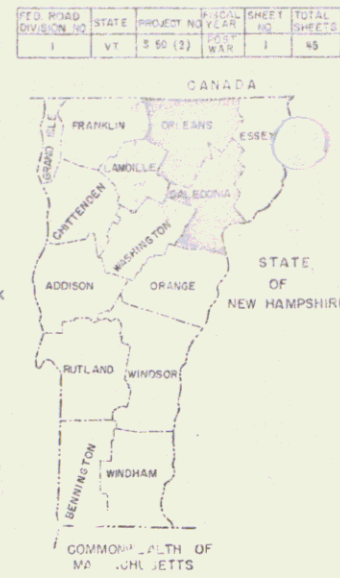
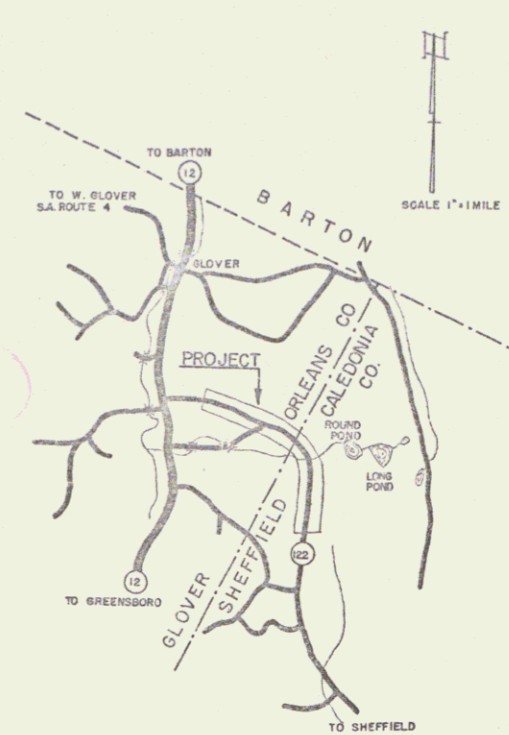
INDEX OF SHEETS	
SHEET NO.	TITLE PAGE
1	TITLE PAGE
2	TYPICAL CROSS SECTION OF IMPROVEMENT (STABILIZED GRAVEL BASE COURSE OF OUTBACK EXCEPT WITH 30% GRAVEL, 1" MIN. 200-4)
3	BANKING AND WIDENING TABLES
4	QUANTITY SHEET (ITEMS AND DRAINAGE)
5-7	EARTHWORK SHEETS
8-17	PLAN AND PROFILE SHEETS
17	CONSTRUCTION DETAILS (DRAINAGE AND MARKERS)
18	CONSTRUCTION DETAILS (DITCHES)
19	STANDARD STRUCTURE SHEET S-40 (BARRICADES, SIGNS AND LIGHTS)
20	STANDARD STRUCTURE SHEET S-24 (DETAILS OF BOX CULVERT)
21	STANDARD STRUCTURE SHEET S-21 (CULVERT DETAILS)
22	STANDARD STRUCTURE SHEET S-4 (DETAILS FOR INLETS AND OUTLETS FOR 48" BOX CULVERT)
23-45	CROSS SECTIONS

STANDARD STRUCTURE SHEET APPROVED BY THE CHIEF ENGINEER, VERMONT STATE DEPARTMENT OF HIGHWAYS  
S-4C JUNE 10, 1950

PROJECT NAME & NUMBER	TYPE	PAVEMENT AREA
GLOVER-SHEFFIELD S 50 (2)	STAB. GR. BASE CRS.	26502 S.Y.
RECORD PLANS		
MATERIALS		
SUB-BASE OF GRAVEL	REIN. STEEL	REIN. STEEL CO., BURLINGTON
CUTBACK ASPHALT	A.C.G.M.P.	BENDER METAL CULVERT CO. WASHINGTON'S STA.
SAND SEAL	G.R. CABLE	AM. WIRE CO. NEW HAVEN, CONN.
CEMENT	CONC. AGGREGATES	NORFOLK FL. JOHNSON
CONTRACTOR	CONTRACT DATED	DEC. 31, 1952
RESIDENT ENGR.	CONTRACT STARTED	APRIL 23, 1954
INSPECTORS	CONTRACT COMPLETED	AUG. 15, 1955
RECORD PLANS	CONTRACT ACCEPTED	JULY 10, 1955

(To Be Returned To R.O.W. Division)  
Town of VT 122  
PERPETUAL  
RIGHT-OF-WAY DIVISION  
TOWN FILE

STATE OF VERMONT  
DEPARTMENT OF HIGHWAYS  
PROPOSED IMPROVEMENT  
SECONDARY PROJECT  
TOWNS OF GLOVER-SHEFFIELD  
COUNTIES OF ORLEANS-CALEDONIA  
VERMONT ROUTE 122  
GLOVER SHEFFIELD ROAD



BEGINNING AT A POINT 0.41 MILE EAST OF THE INTERSECTION OF VERMONT ROUTES 12 AND 122 AND EXTENDING SOUTHEASTERLY 11,926.0 FEET  
LENGTH OF PROJECT 11,926.0 FT. = 2.259 MILES

NOTE: ANY FURTHER INFORMATION CONCERNING FINAL QUANTITIES, AMOUNTS OF OTHER WORKS RELATIVE TO THIS PROJECT MAY BE FOUND IN EITHER THE FIELD BOOKS OR THE PRELIMINARY FILE.

RIGHT-OF-WAY DIVISION  
TOWN FILE  
PERPETUAL  
Town of VT 122  
(To Be Returned To R.O.W. Division)

PROJECT: Glover-Sheffield  
S. 50 (2)  
DATE: Nov. 19, 1953  
DESIGNED BY: E. J. Parsons  
CHECKED BY: E. J. Parsons  
APPROVED BY: E. J. Parsons  
TOWN: Glover-Sheffield  
COUNTY: Orleans-Caledonia

GROUND ELEVATION	DATUM	LINE
GRADE ELEVATION	DATUM	LINE
CURVE DATA		
DEFLECTION OF ANGLE	Δ	
DEGREE OF CURVE	D	
RADIUS OF CURVE	R	
TANGENT DISTANCE	T	
LENGTH OF CURVE	L	
EXTERNAL DISTANCE	E	
POINT OF INTERSECTION	PI	
POINT OF CURVE	P.C.	
POINT OF TANGENT	P.T.	
POINT ON TANGENT	P.O.T.	
POINT ON SUB-TANGENT	P.O.S.T.	

SCALES	
TITLE	1" = 400'
TYPICAL	1" = 2'
PLAN	1" = 50'
PROFILE HORIZONTAL	1" = 50'
PROFILE VERTICAL	1" = 10'
CROSS-SECTIONS	1" = 5'

THESE PLANS ARE SUBJECT TO SUCH REVISIONS AS MAY BE REQUIRED BY THE BUREAU OF PUBLIC ROADS OR THE COMMISSIONER OF HIGHWAYS  
CONSTRUCTION IS TO BE CARRIED ON IN ACCORDANCE WITH THE PLANS AND THE STANDARD ROAD AND BRIDGE SPECIFICATIONS OF 1948, AS APPROVED JULY 25, 1949 BY THE BUREAU OF PUBLIC ROADS, INCLUDING ALL SUBSEQUENT APPROVED REVISIONS AND SUCH REVISED SPECIFICATIONS AND SPECIAL PROVISIONS AS ARE SUBMITTED WITH THE PLANS.

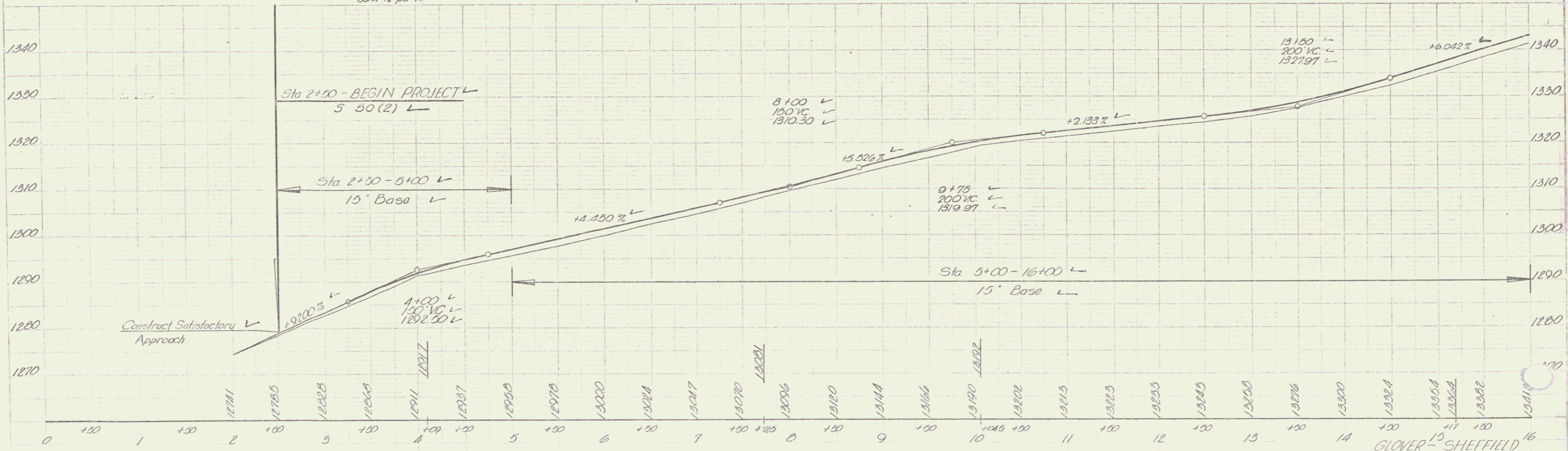
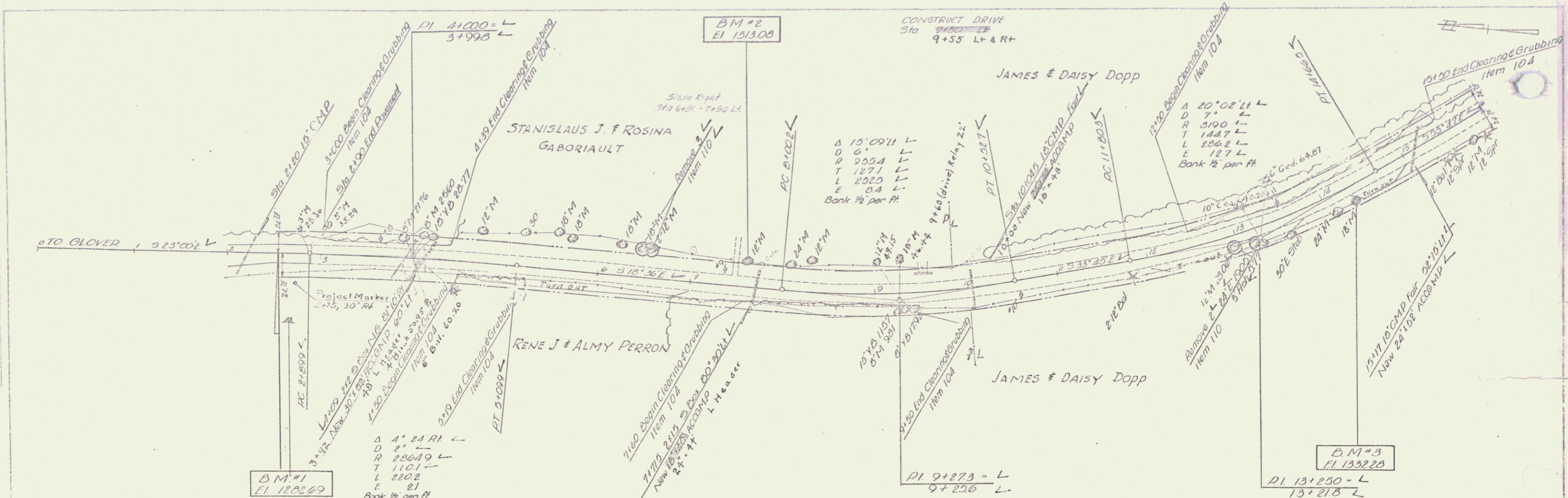
APPROVED DATE NOV 19 1953	APPROVED DATE NOV 13 1953	APPROVED DATE NOV 3 1953	APPROVED DATE NOV 13 1953	APPROVED DATE NOV 13 1953
------------------------------	------------------------------	-----------------------------	------------------------------	------------------------------

DEPARTMENT OF COMMERCE  
BUREAU OF PUBLIC ROADS

APPROVED  
DISTRICT ENGINEER  
Pin # 998603

PROJECT S NO. 5(2)

SHEET 1 OF 25 SHEETS



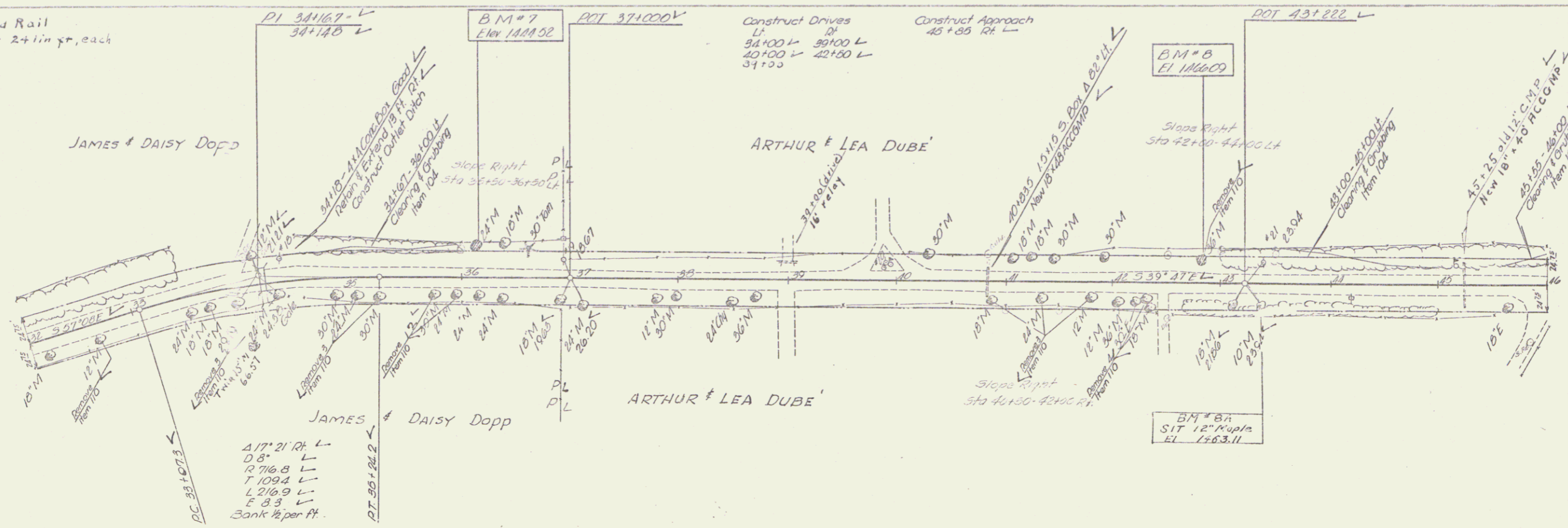
B.M.#1 77' RH Sta 2+68 ST Stump Elev 1282.69  
 B.M.#2 28' LI Sta 7+61 S/R 12' Maple Elev 1313.03

B.M.#3 17' RI Sta 14+33 S/R 15' Maple Elev 1332.28

GLOVER - SHEFFIELD  
 Proj. 5 No. 50(2)  
 Sheet 8 of 45

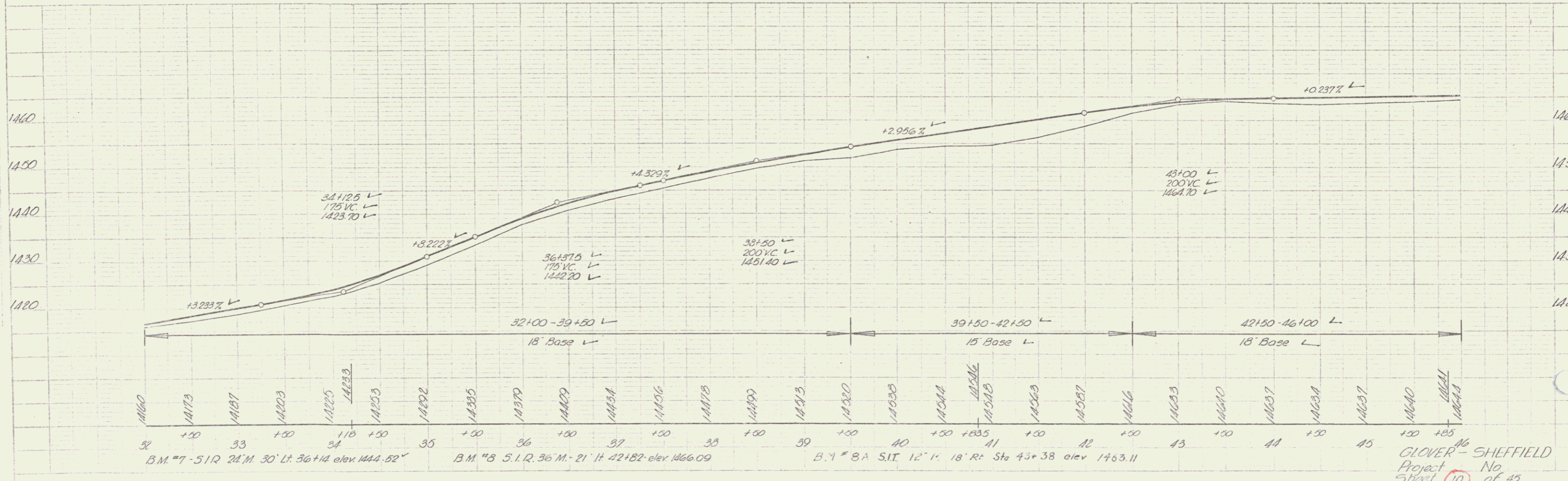


Plank Guard Rail  
34+18 Lt & Rt 24 in ft, each

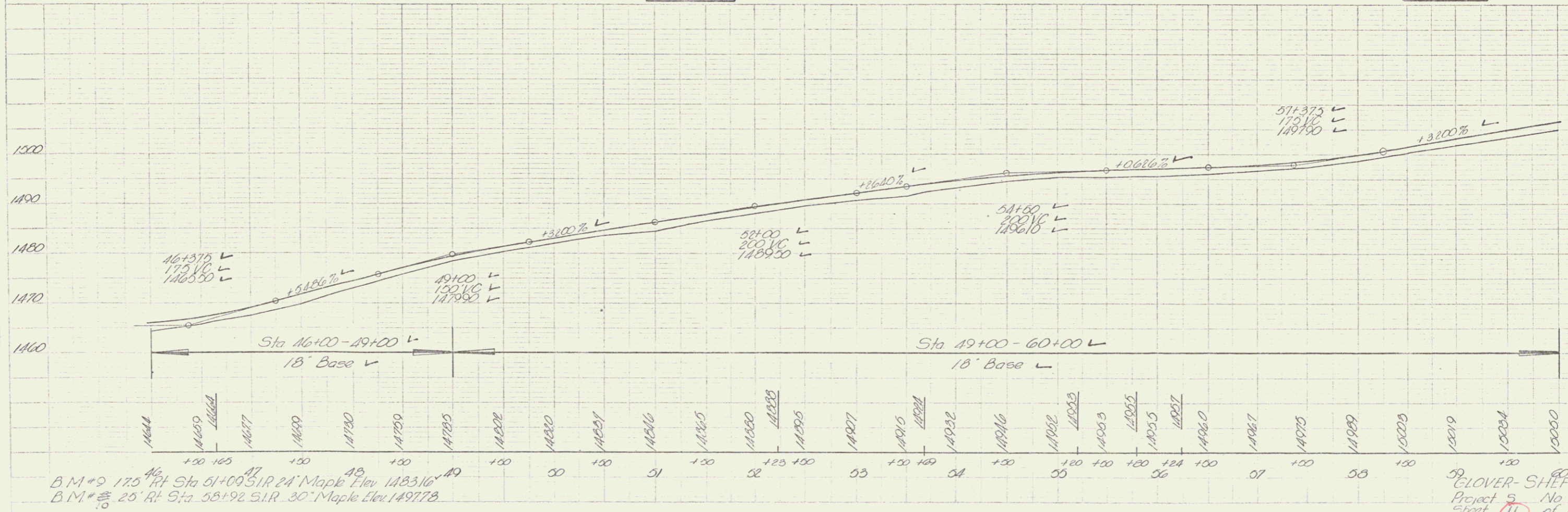
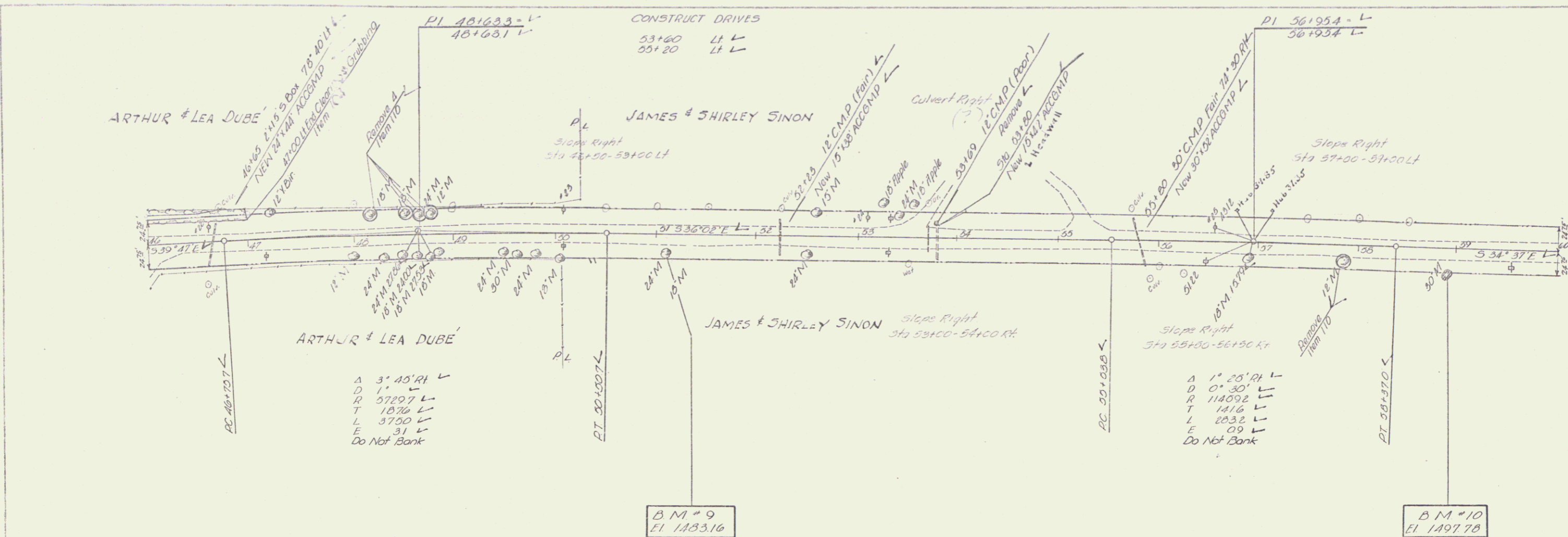


PAV	1.00
GRAV	1.00
BASE	1.00
FINISH	1.00
TOTAL	4.00

GRAV	1.00
BASE	1.00
FINISH	1.00
TOTAL	3.00



GLOVER - SHEFFIELD  
Project No. 10 of 45



B.M. #9 175 RT Sta 51+00 S.I.R. 24' Maple Elev. 148316  
 B.M. #10 25' RT Sta 55+92 S.I.R. 30' Maple Elev. 149778

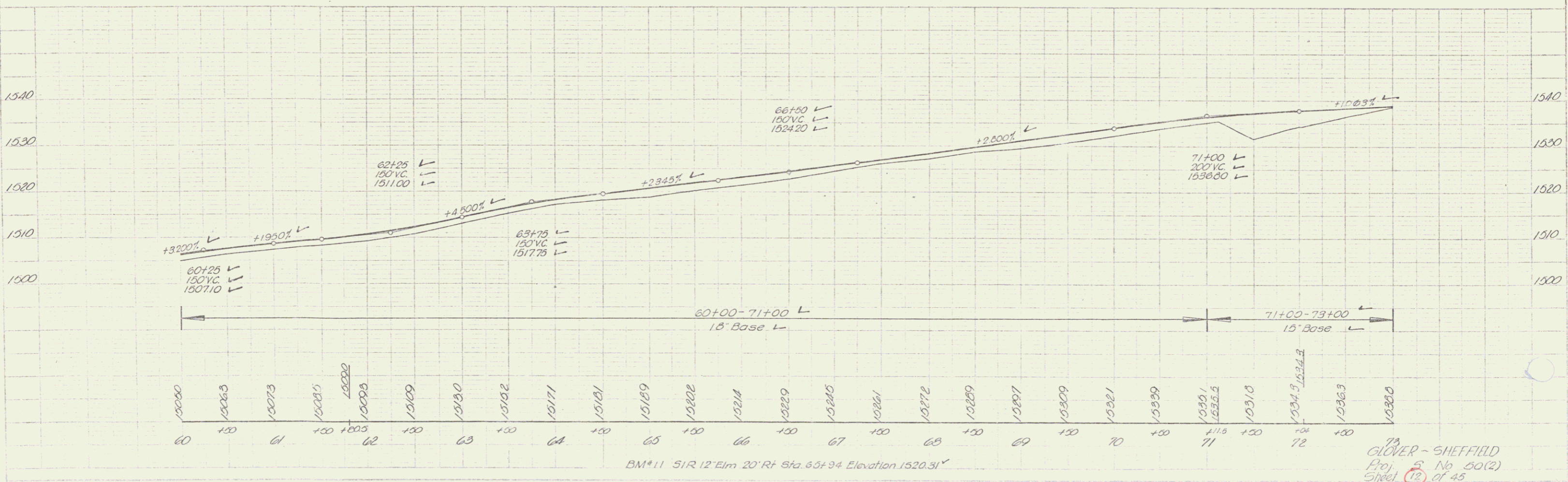
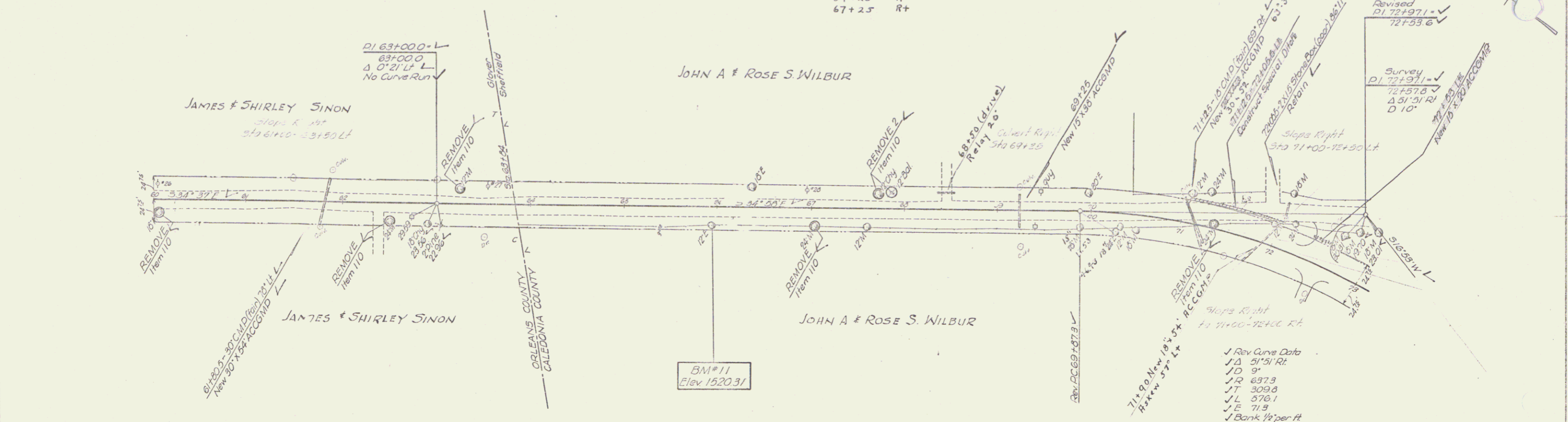
CLOVER-SHEFFIELD  
 Project 2 No. 50(2)  
 Sheet 11 of 45

Plank Guard Rail  
71+40 Lt Blingr

CONSTRUCT DRIVES

Sta	Pos
63+50	Rt
63+45	Lt
72+25	R+
67+25	R+

DATE	7-58
BY	Hobby
CHECKED	
DATE	
BY	



DATE	7-58
BY	Hobby
CHECKED	
DATE	
BY	

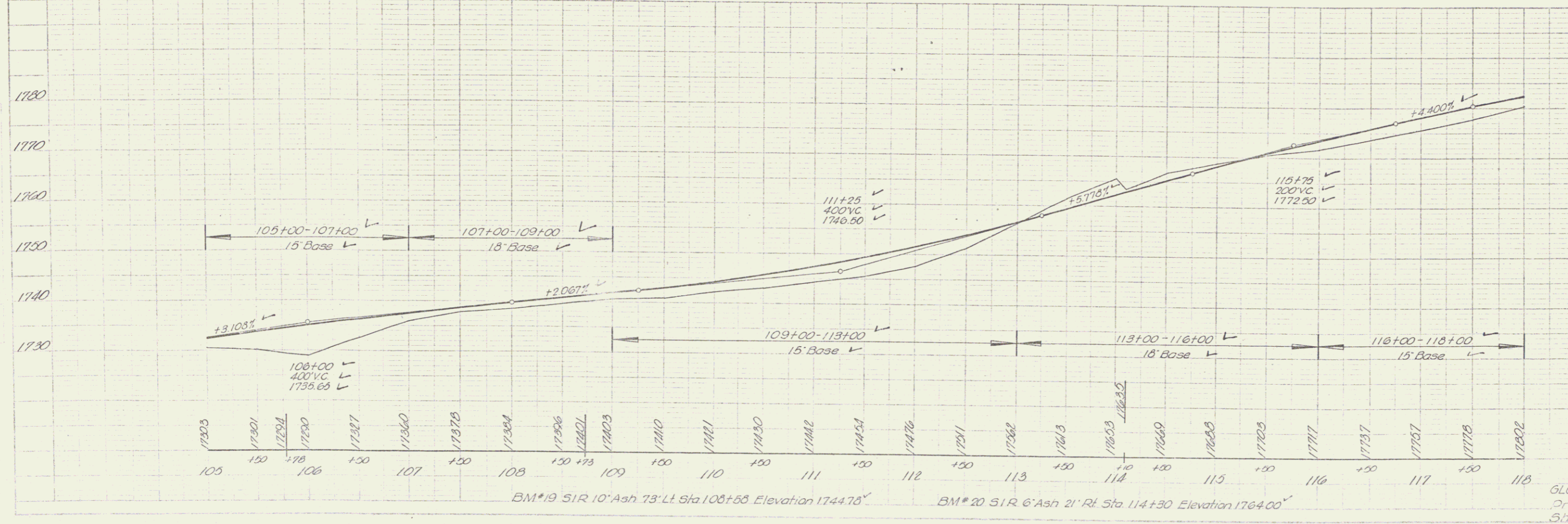
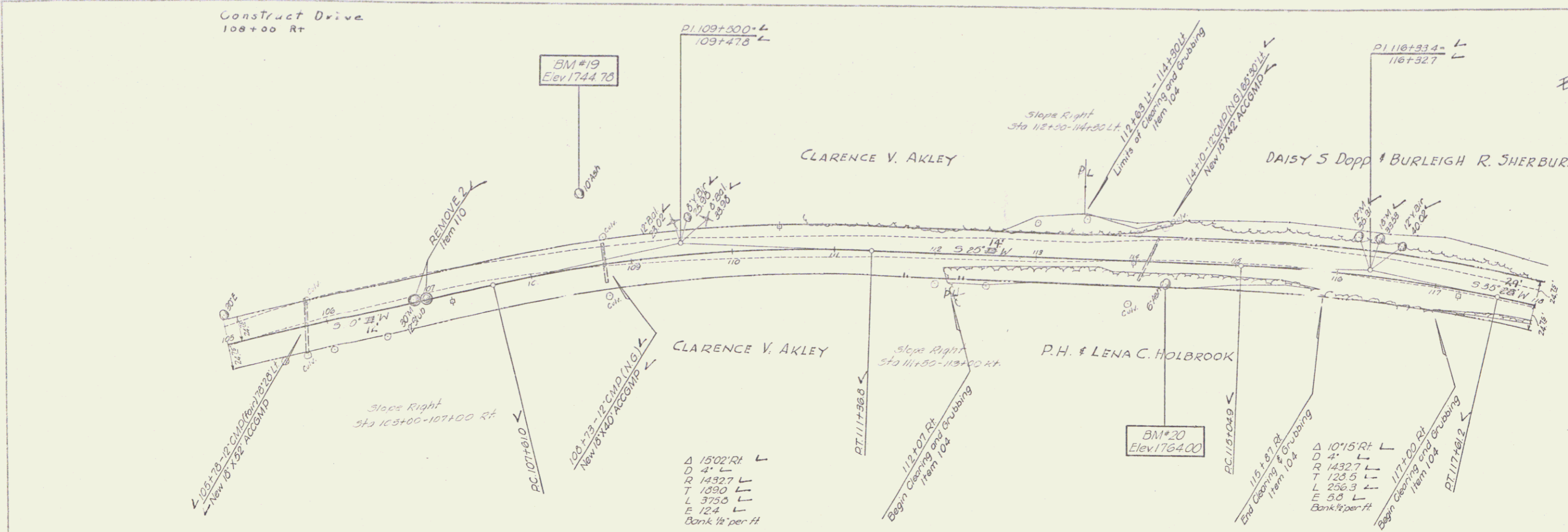
BM#11 51R 12' Elm 20' Rt Sta. 65+34 Elevation 1520.31'

GLOVER - SHEFFIELD  
Proj. No. 50(2)  
Sheet 19 of 45

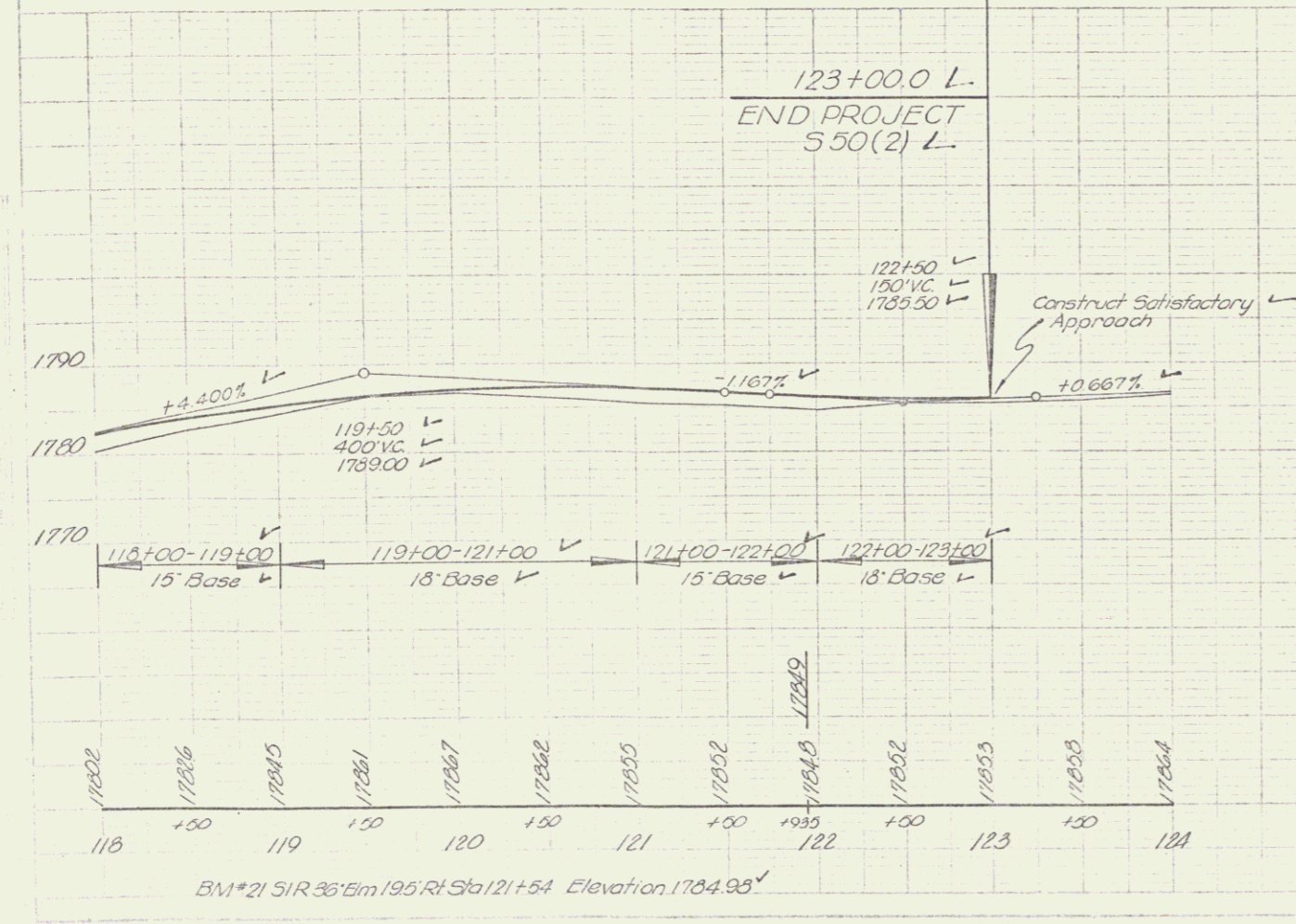
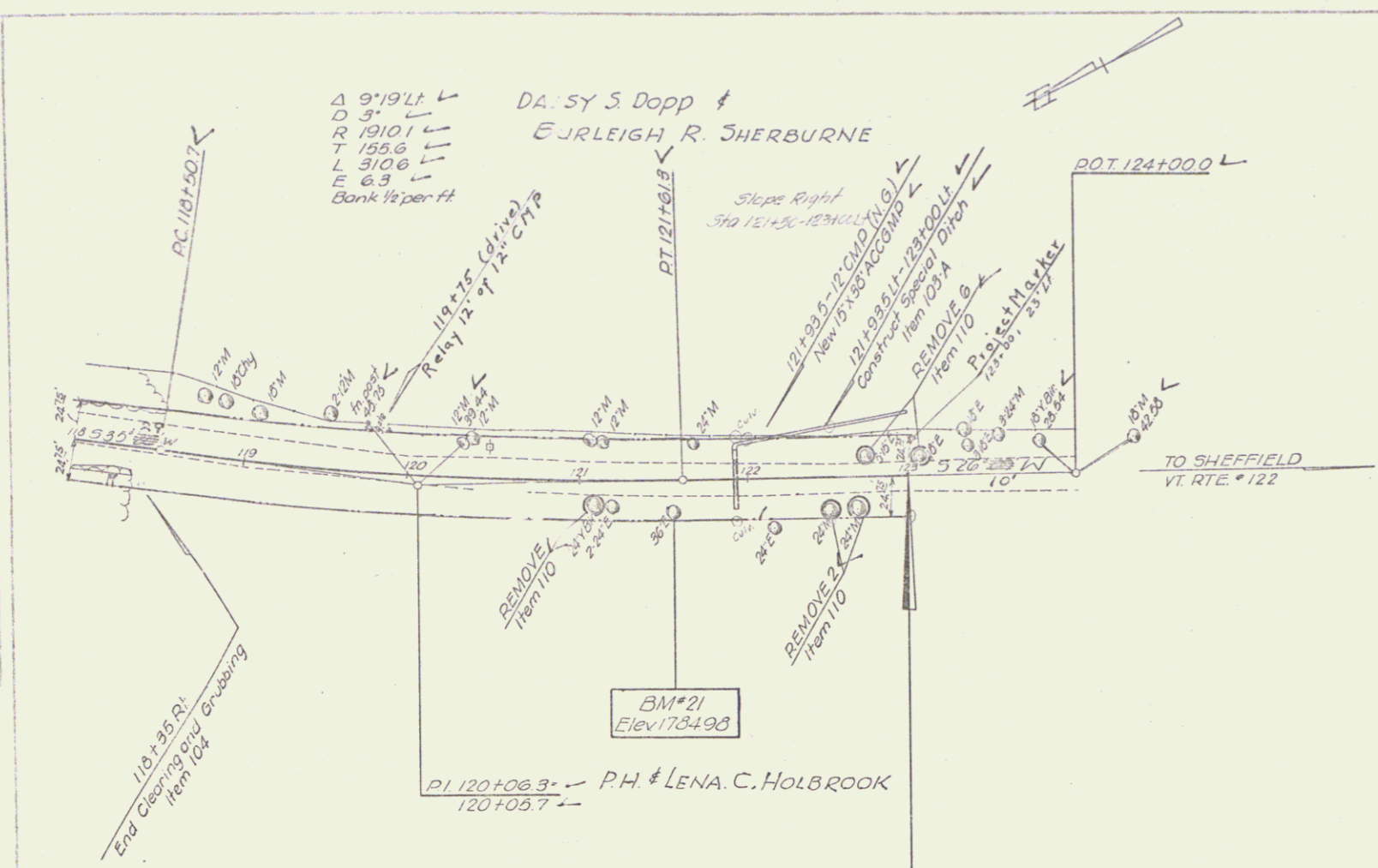




PLAN  
 1/2" = 100'  
 1/4" = 50'  
 1/8" = 25'  
 1/16" = 12.5'  
 1/32" = 6.25'  
 1/64" = 3.125'



DATE	7/23
BY	...
CHECKED	...
APPROVED	...



GLOVER-SHEFFIELD  
 Project 5 No 50 (2)  
 Sheet 16 of 45

10