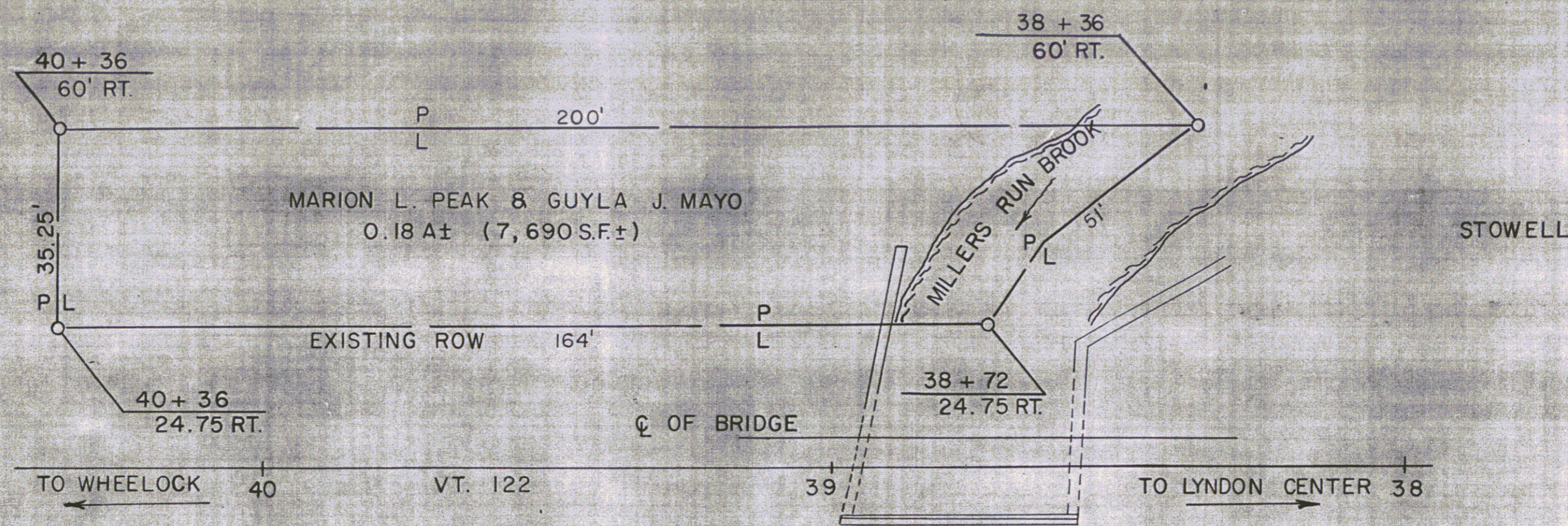
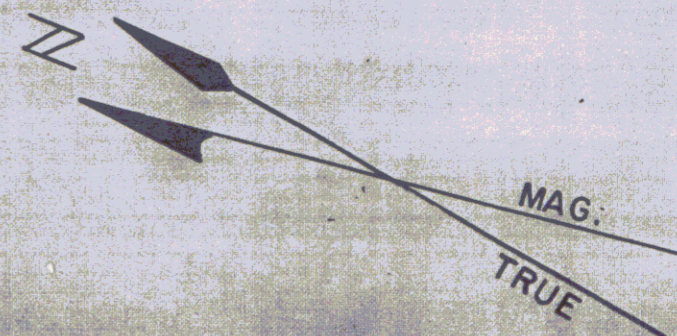


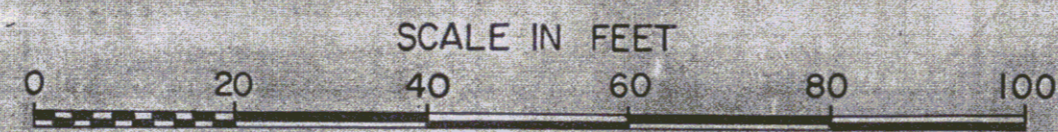
PEAK AND MAYO TO STATE OF VERMONT
BY OPTION ON 6/25/74 IN BK 30/151
MP 0099

POOR ORIGINAL COPY



NOTE: STATIONS SHOWN ARE ROUTE LOG STATIONS

TOWN OF WHEELLOCK
Project BMA 6307
Pin # 99R598
Route VT122
Date 7/11/1974



MP 0-766-C-717 122

STATE OF VERMONT DEPT. OF HIGHWAYS		
TOWN OF WHEELLOCK		
PROJECT WHEELLOCK BMA 6307		
APPROX. SCALE 1"=20'	DATE 7-11-74	DRAWN BY KM

204

