

INDEX OF SHEETS

SHEET NO.	TITLE PAGE
1	TITLE PAGE
2	TYPICAL CROSS-SECTION OF IMPROVEMENT (DOUBLE TACK COAT OF REFINED TAR WITH FEA STONE SEAL, ITEM 29A)
3	BANKING AND WIDENING TABLES
4-9	PLAN AND PROFILE
10	STANDARD STRUCTURE SHEET S-28 PIPE CULVERTS
11	" " " " S-30 GUARD RAIL
12	" " " " S-30A BOUNDARY MARKERS
13	" " " " S-40 BARRICADES, SIGNS & LIGHTS
14	" " " " S-41 ROUNDING OF SLOPES
15-35	CROSS SECTIONS

STANDARD STRUCTURE SHEETS  
 APPROVED BY THE CHIEF ENGINEER, V.S.D.H.  
 S-28 APRIL 26, 1941  
 S-30 MAY 12, 1941  
 S-30A APRIL 19, 1941  
 S-40 DEC. 18, 1945

STATE OF VERMONT  
 STATE HIGHWAY DEPARTMENT

PLAN AND PROFILE OF PROPOSED  
 STATE HIGHWAY

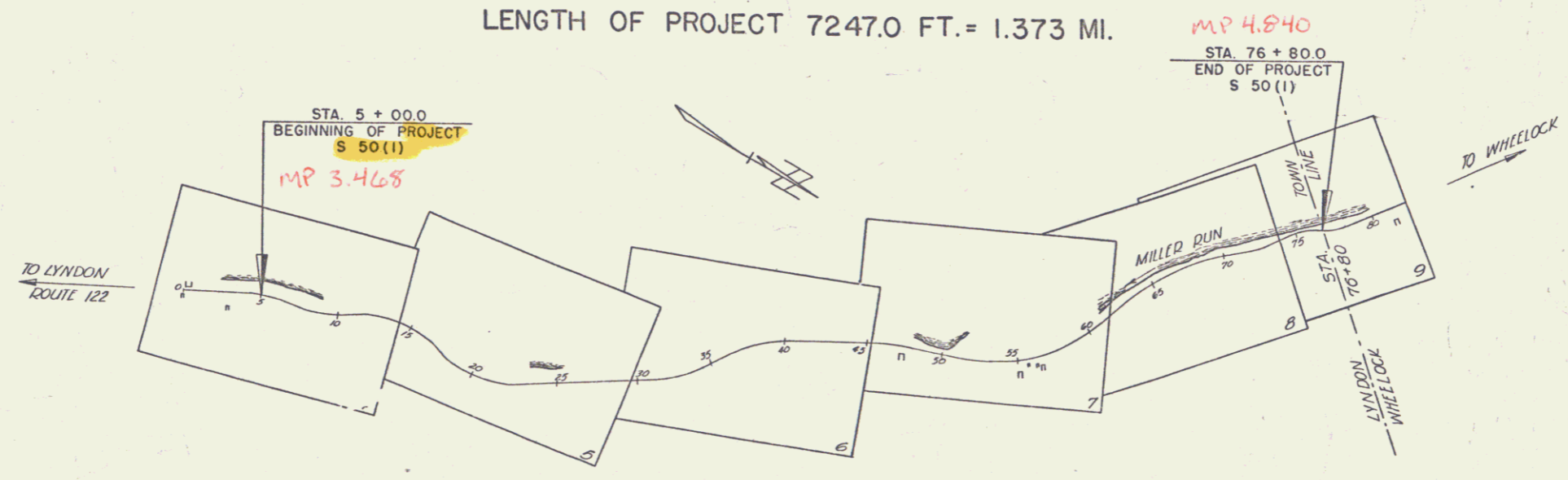
TOWN OF LYNDON

ROUTE 122  
 LYNDON-WHEELLOCK ROAD

BEGINNING AT A POINT 7247.0 FEET SOUTHEASTERLY OF THE  
 LYNDON-WHEELLOCK TOWN LINE AND EXTENDING NORTHWESTERLY  
 1.373 MILES TO THE LYNDON-WHEELLOCK TOWN LINE

LENGTH OF PROJECT 7247.0 FT. = 1.373 MI.

FED. ROAD DIST. NO.	STATE	PROJ. NO.	FISCAL YEAR	SHEET NO.	TOTAL SHEETS
9	VT.	50(1)	1946	1	35



RIGHT-OF-WAY DIVISION  
 TOWN FILE  
 PERPETUAL  
 Town of Lyndon  
 (To Be Returned To R.O.W. Division)

APPROVED: Feb. 10, 1947  
H.E. Stewart  
 COMMISSIONER OF HIGHWAYS

Pin # 99R596  
 Date 2/7/1947

Project Lyndon  
 Number S 50 (1)  
 Length 1.373 MI.  
 Date of Issue  
 CONTRACTOR State Road Account  
 AUG 21 1947  
 Approved by the Chief Engineer, V.S.D.H.  
 at a point 7247.0 feet southeasterly of the  
 Lyndon-Wheellock town line and extending northwesterly  
 1.373 miles to the Lyndon-Wheellock town line.

GROUND ELEVATION..... DATUM..... LINE  
 GRADE ELEVATION..... DATUM..... LINE

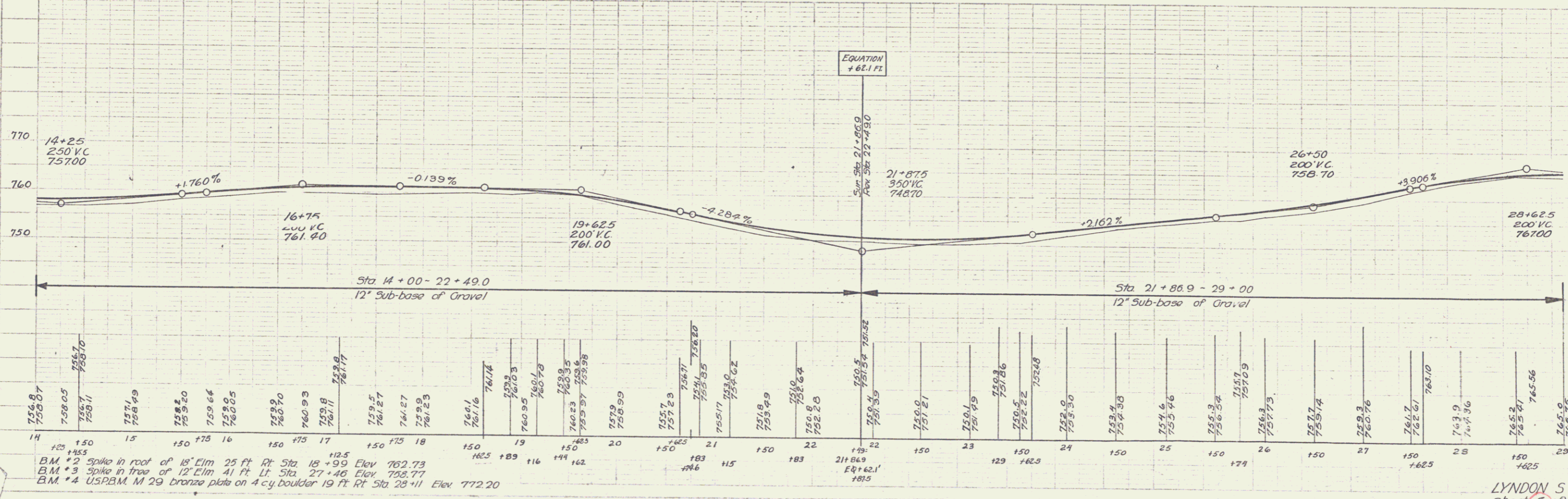
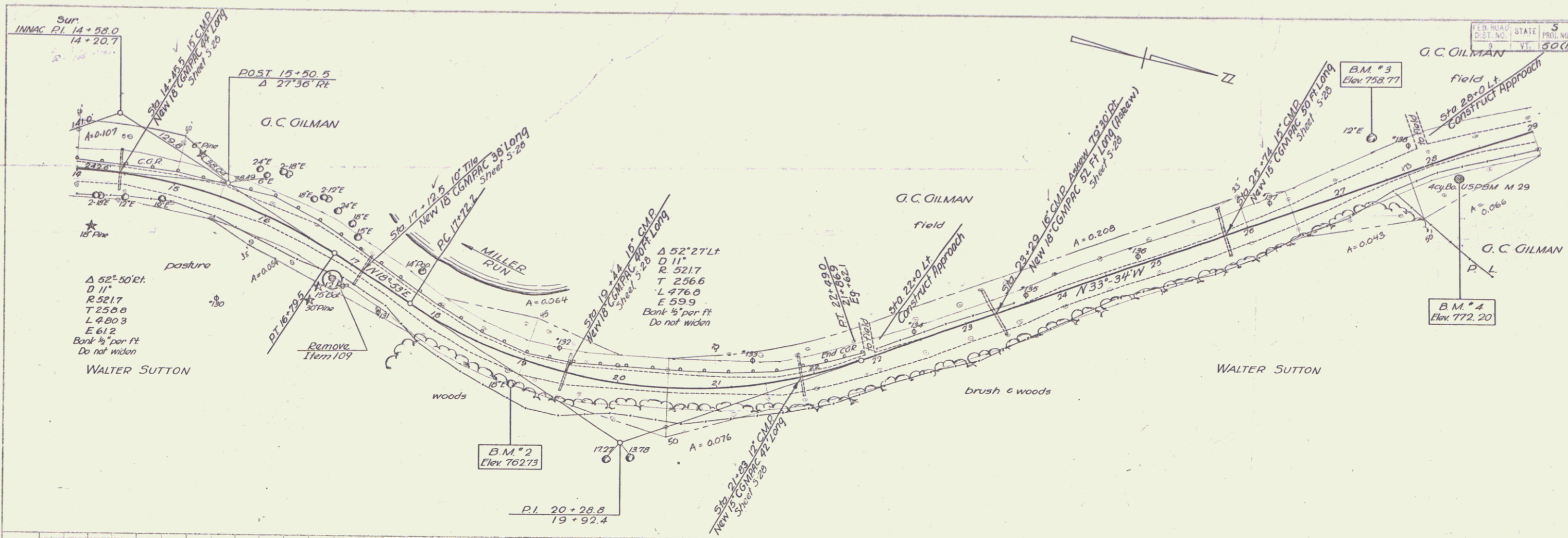
CURVE DATA  
 DEFLECTION ANGLE..... Δ  
 DEGREE OF CURVE..... D  
 RADIUS OF CURVE..... R  
 TANGENT DISTANCE..... T  
 LENGTH OF CURVE..... L  
 EXTERNAL DISTANCE..... E  
 POINT OF INTERSECTION..... P. I.  
 POINT OF CURVE..... P. C.  
 POINT OF TANGENT..... P. T.  
 POINT ON TANGENT..... P. O. T.

SCALES  
 TITLE..... 1" = 500'  
 TYPICAL..... 1" = 2'  
 PLAN..... 1" = 50'  
 PROFILE HORIZONTAL..... 1" = 50'  
 PROFILE VERTICAL..... 1" = 10'  
 CROSS SECTIONS..... 1" = 5'

THESE PLANS ARE SUBJECT TO SUCH REVISIONS AS MAY BE  
 REQUIRED BY THE PUBLIC ROADS ADMINISTRATION OR THE COM-  
 MISSIONER OF HIGHWAYS.  
 CONSTRUCTION IS TO BE CARRIED ON IN ACCORDANCE WITH  
 THE PLANS AND THE STANDARD ROAD AND BRIDGE SPECIFICATIONS  
 OF 1936, AS APPROVED DECEMBER 29TH, 1936 BY THE PUBLIC  
 ROADS ADMINISTRATION, INCLUDING ALL SUBSEQUENT APPROVED  
 REVISIONS AND SUCH REVISED SPECIFICATIONS AND SPECIAL  
 PROVISIONS AS ARE SUBMITTED WITH THE PLANS.

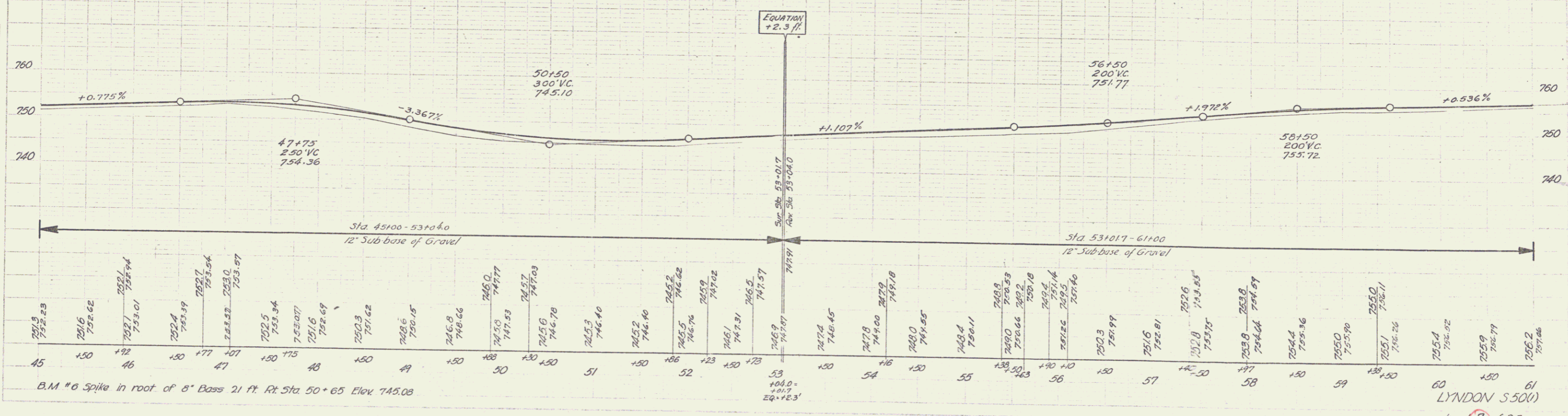
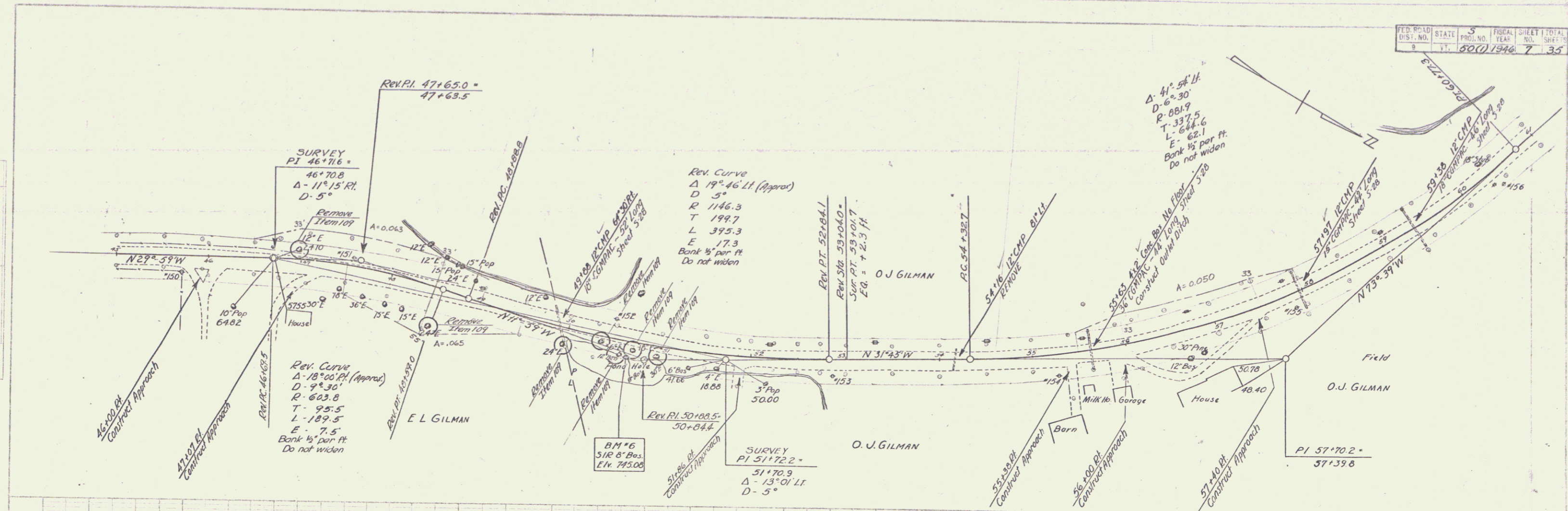
APPROVED Feb. 10, 1947  
H.E. Stewart  
 HIGHWAY ENGINEER  
 APPROVED Jan 31 1947  
W. H. ...  
 DISTRICT HIGHWAY COMMISSIONER  
 SERIES 5 No 50(1) FILED  
 SHEET 1 OF 35





B.M. #2 spike in roof of 18' Elm 25 ft Rt. Sta. 18+99 Elev. 762.73  
 B.M. #3 spike in tree of 12' Elm 41 ft Lt. Sta. 27+46 Elev. 758.77  
 B.M. #4 USPB.M. M 29 bronze plate on 4 cy. boulder 19 ft Rt. Sta. 28+11 Elev. 772.20

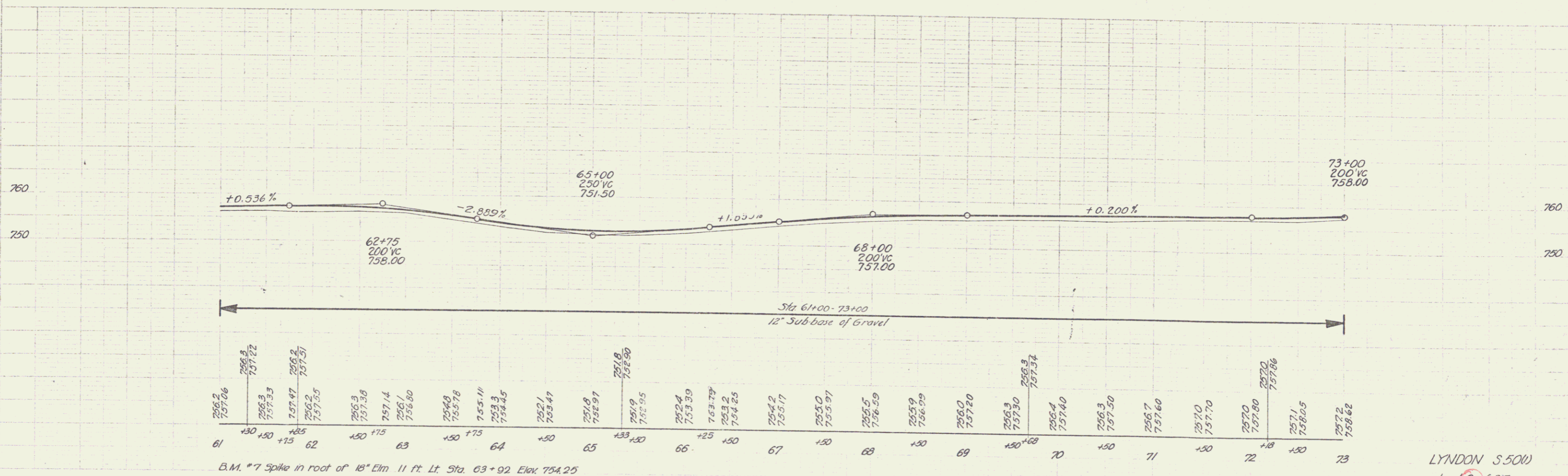
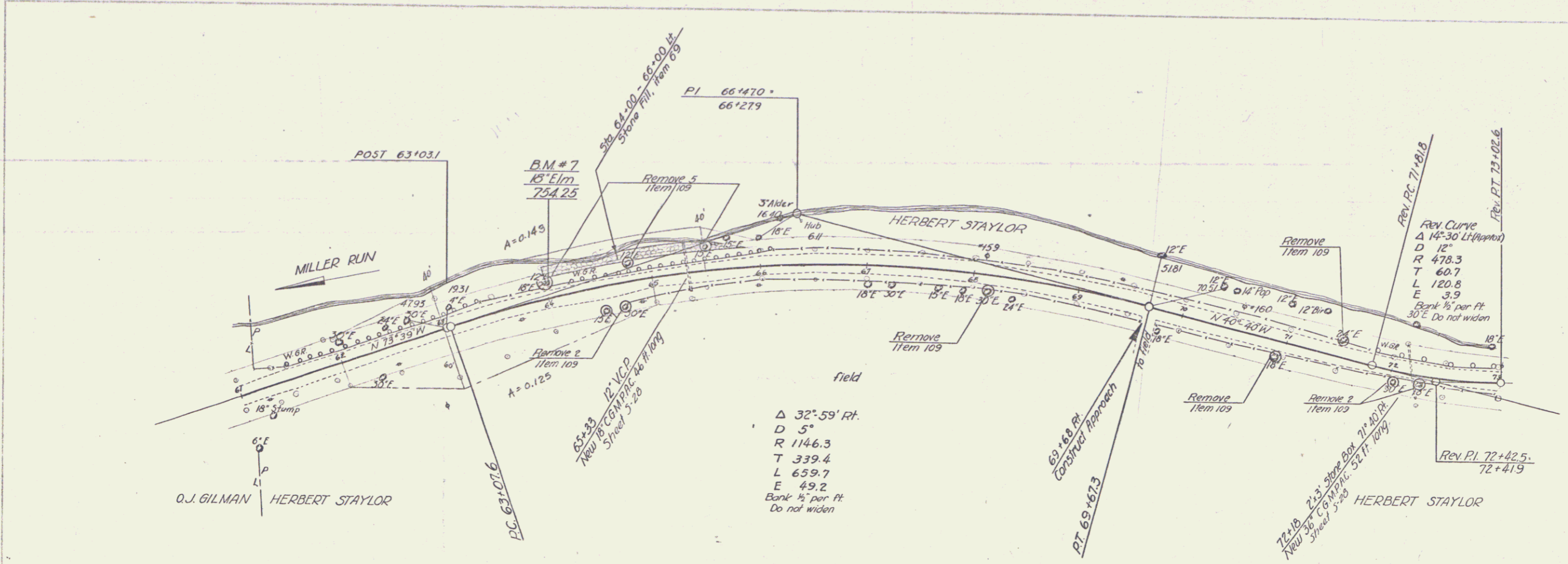




Scale: 1" = 40' (Horizontal)  
1" = 10' (Vertical)

B.M. #6 Spike in root of 6" Bass 21 ft. Rt. Sta. 50+65 Elev. 745.08

PLAN  
 Sounding  
 8-46  
 8-46  
 ROAD & W.L.S.  
 1/2" = 100'



B.M. #7 Spike in root of 18' Elm 11 ft. Lt. Sta. 63+92 Elev. 754.25

LYNDON S 500  
Sheet 8 of 35

6

