

INDEX OF SHEETS

SHEET NO	TITLE PAGE
1	TYPICAL CROSS SECTION OF IMPROVEMENT SINGLE TRACK COAT OF OUTBACK ASPHALT WITH CRUSHED PEA STONE, ITEM 314
2	BANKING AND WIDENING TABLES
3	QUANTITY SHEET (ITEMS)
4	QUANTITY SHEET (DRAINAGE)
5	EARTHWORK SHEET
6	PLAN AND PROFILE SHEETS
7-8	DETAILS OF SUPERSTRUCTURE
9	BRIDGE RAILING DETAILS
10	DETAILS OF ABUTMENT NO. 1
11	DETAILS OF ABUTMENT NO. 2
12	REINFORCING STEEL SCHEDULE
13	CONSTRUCTION DETAILS CD (DRAINAGE AND MARKERS)
14	CONSTRUCTION DETAILS CD-1 (DITCHES)
15	STANDARD STRUCTURE SHEET SB-11 (BARRICADES, SIGNS & LIGHTS)
16	STANDARD STRUCTURE SHEET SB-10 (DETAILS G, D, J, K, & L)
17	STANDARD STRUCTURE SHEET S-40 (BARRICADES, SIGNS & LIGHTS)
18	STANDARD STRUCTURE SHEET S-45-45 (TWO CABLE GUARD RAIL)
19	CROSS SECTIONS
20-24	CHANNEL SECTIONS

STANDARD STRUCTURE SHEET APPROVED BY THE CHIEF ENGINEER, VERMONT STATE DEPARTMENT OF HIGHWAYS

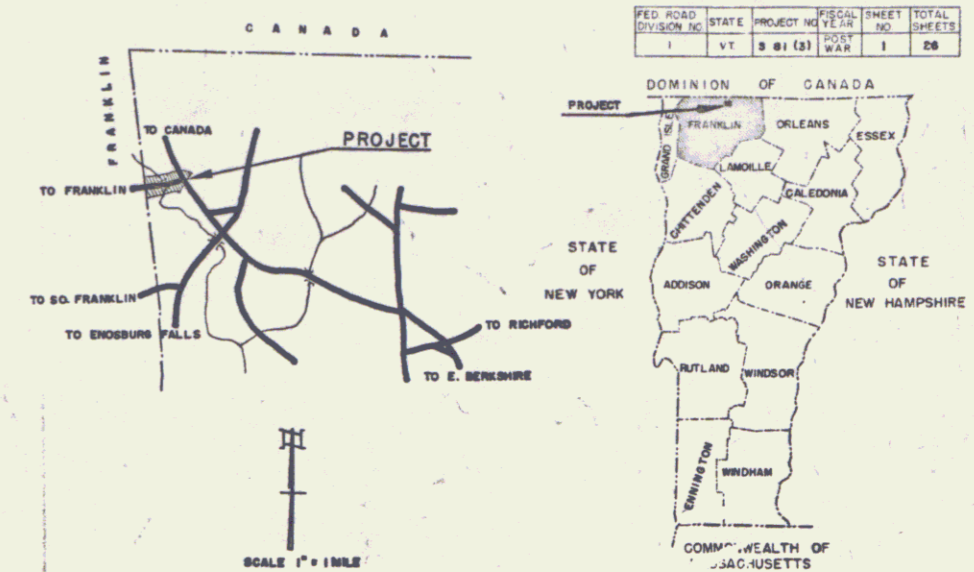
S-40 JUNE 10, 1950

STATE OF VERMONT
DEPARTMENT OF HIGHWAYS

PROPOSED IMPROVEMENT

FEDERAL AID SECONDARY PROJECT

TOWN OF BERKSHIRE
COUNTY OF FRANKLIN
STATE AID ROUTES 4 & 3
FRANKLIN-W. BERKSHIRE ROAD

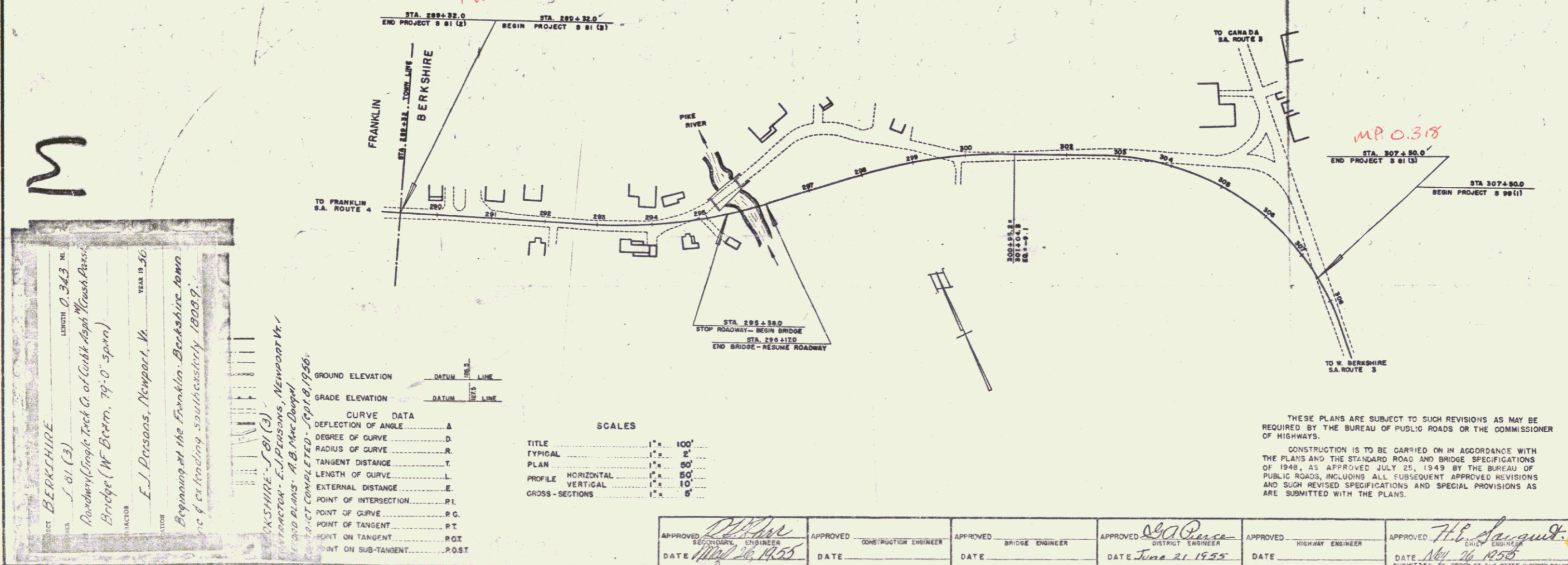


PROJECT NAME & T.O.B.	TYPE	PAVEMENT AREA
BERKSHIRE - SBI(3)	Single Track Co. Coat Asphalt with Crushed Pea Stone	3.43

SUB-BASE OF GRAVEL	REINFORCING STEEL
Mullen Pit	Vermont Street Steel
CRUSHED GRAVEL	STRUCTURAL LEVEL
W. Conc. Pipe Corp. Windsor, Vt.	11.0
REFINED ASPHALT	ASPHALT
M.E. Metal Co. of Vermont	1.5
CURBWORK	BRIDGE PAINT
Jacany Mfg. Co. Portland, Me.	Reynolds and J.J. Barker Ltd.
SA. GRAVEL	BRIDGE PAINT
Sumner Lime Works	Reynolds and J.J. Barker Ltd.
CONTRACTOR	CONTRACT DATED
E.J. Parsons, Newport, Vt.	July 22, 1955
RESIDENT ENG.	CONTRACT STARTED
Geo. Downing & N. Barker	July 1, 1955
INSPECTIONS	CONTRACT COMPLETED
A.B. Mac Dougal	July 2, 1956
RECORD PLANS	CONTRACT ACCEPTED
A.B. Mac Dougal	July 2, 1956

BEGINNING AT THE FRANKLIN-BERKSHIRE TOWN LINE AND EXTENDING SOUTHEASTERLY 1,808.9 FEET
LENGTH OF ROADWAY 1,729.9 FEET • 0.328 MILE
LENGTH OF BRIDGE 790 FEET • 0.015 MILE
LENGTH OF PROJECT 1,808.9 FEET • 0.343 MILE

RIGHT-OF-WAY DIVISION
TOWN FILE
PERPETUAL
Pte. of U-120
(To Be Returned To R.O.W. Division)



BERKSHIRE
SBI(3)
Length 0.343 mi.
Beginning at the Franklin-Berkshire town line of extending southeasterly 1,808.9 feet.

E.J. Parsons, Newport, Vt.

CONTRACT COMPLETED July 2, 1956

CURVE DATA	DEFLECTION OF ANGLE	DEGREE OF CURVE	RADIUS OF CURVE	TANGENT DISTANCE	LENGTH OF CURVE	EXTERNAL DISTANCE	POINT OF INTERSECTION	POINT OF CURVE	POINT OF TANGENT	POINT ON TANGENT	POINT ON SUB-TANGENT
	Δ	D	R	T	L	E	PI	PC	PT	POB	POA

TITLE	SCALE
TYPICAL	1" = 100'
PLAN	1" = 50'
PROFILE	1" = 10'
CROSS-SECTIONS	1" = 5'

THESE PLANS ARE SUBJECT TO SUCH REVISIONS AS MAY BE REQUIRED BY THE BUREAU OF PUBLIC ROADS OR THE COMMISSIONER OF HIGHWAYS.

CONSTRUCTION IS TO BE CARRIED ON IN ACCORDANCE WITH THE PLANS AND THE STEWARD ROAD AND BRIDGE SPECIFICATIONS OF 1948, AS APPROVED JULY 25, 1949 BY THE BUREAU OF PUBLIC ROADS, INCLUDING ALL SUBSEQUENT APPROVED REVISIONS AND SUCH REVISED SPECIFICATIONS AND SPECIAL PROVISIONS AS ARE SUBMITTED WITH THE PLANS.

APPROVED SECONDARY ENGINEER DATE May 26, 1955	APPROVED CONSTRUCTION ENGINEER DATE	APPROVED BRIDGE ENGINEER DATE	APPROVED DISTRICT ENGINEER DATE June 21, 1955	APPROVED HIGHWAY ENGINEER DATE	APPROVED CHIEF ENGINEER DATE May 26, 1955
---	---	-------------------------------------	---	--------------------------------------	---

DEPARTMENT OF COMMERCE
BUREAU OF PUBLIC ROADS

Pin # 992588

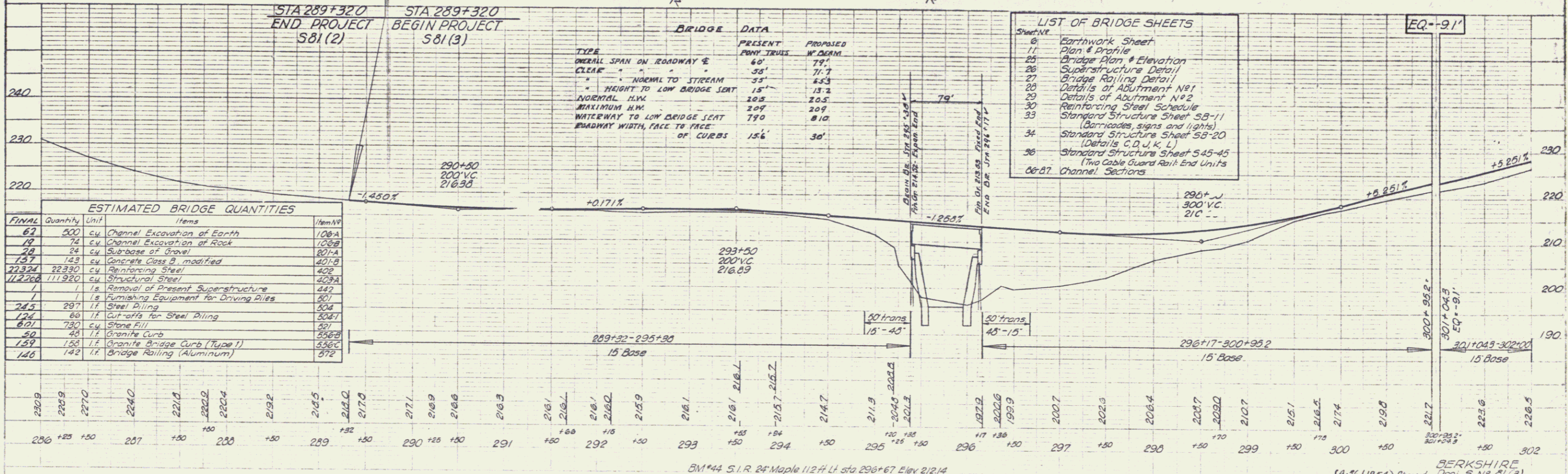
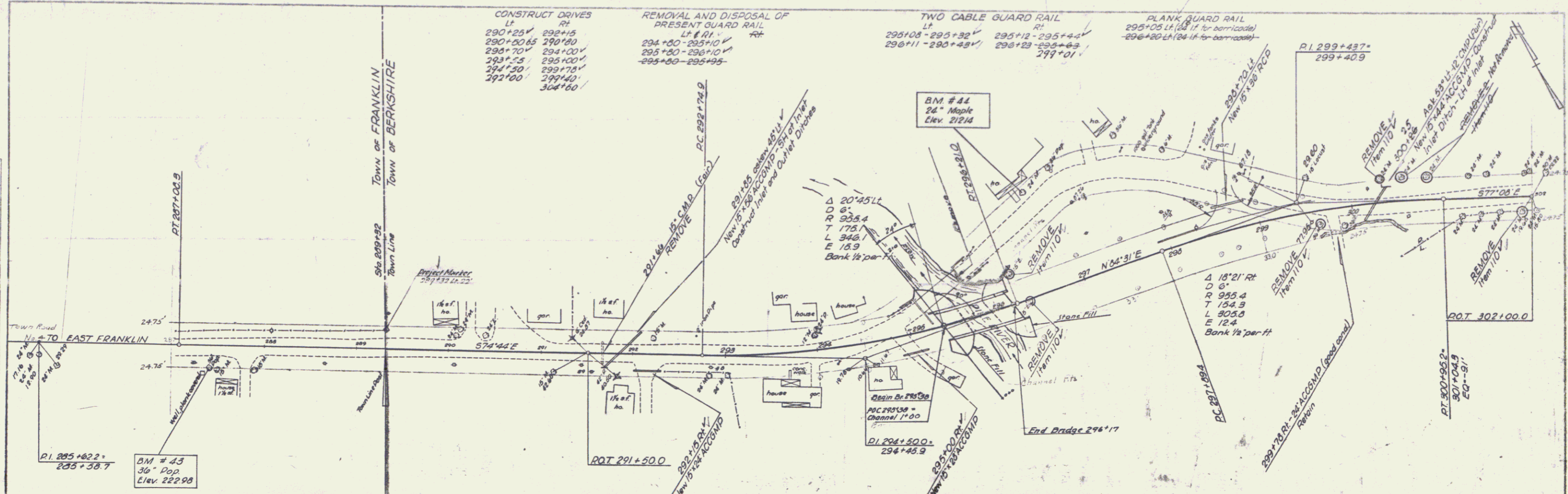
DISTRICT ENGINEER DATE

PROJECT S NO. 81 (3)

SHEET 1 OF 26 SHEETS

PLAN
 DRAWN BY: **WALKER**
 CHECKED BY: **WALKER**
 DATE: **11/15/54**
 SCALE: **1" = 40'**

PROJECT
 TITLE: **BRIDGE OVER EAST FRANKLIN**
 LOCATION: **STATION 289+32.0**
 COUNTY: **BERKSHIRE**



FINAL	Quantity	Unit	Items	Item No.
62	200	cu	Channel Excavation of Earth	106A
19	74	cu	Channel Excavation of Rock	106B
78	24	cu	Sub-base of Gravel	80-A
157	143	cu	Concrete Class B, modified	40-B
22324	22320	cu	Reinforcing Steel	402
112206	111920	cu	Structural Steel	403A
	1	ls	Removal of Present Superstructure	442
	1	ls	Furnishing Equipment for Driving Piles	301
245	297	lf	Steel Piling	304
124	60	lf	Cut-offs for Steel Piling	304T
871	730	cu	Stone Fill	301
50	48	lf	Granite Curb	306B
159	158	lf	Granite Bridge Curb (Type 1)	556C
146	142	lf	Bridge Railing (Aluminum)	872

TYPE	BRIDGE DATA	
	PRESENT	PROPOSED
OVERALL SPAN ON ROADWAY	60'	79'
CLEARANCE	35'	71.7'
HEIGHT TO LOW BRIDGE SEAT	15'	13.2'
VERTICAL H.W.	20.5'	20.5'
MAXIMUM H.W.	20.9'	20.9'
WATERWAY TO LOW BRIDGE SEAT	77.0'	81.0'
ROADWAY WIDTH, FACE TO FACE OF CURBS	15.6'	30'

- LIST OF BRIDGE SHEETS**
- 6 Earthwork Sheet
 - 11 Plan & Profile
 - 25 Bridge Plan & Elevation
 - 26 Superstructure Detail
 - 27 Bridge Railing Detail
 - 28 Details of Abutment No. 1
 - 29 Details of Abutment No. 2
 - 30 Reinforcing Steel Schedule
 - 33 Standard Structure Sheet S-8-11 (Barricades, signs and lights)
 - 34 Standard Structure Sheet S-8-20 (Details C, D, J, K, L)
 - 36 Standard Structure Sheet S-45-45 (Two Cable Guard Rail End Units)
 - 68-87 Channel Sections

BERKSHIRE
 Proj. 5 No. 31(3)
 Sheet 7 of 26

